

© The Tiffen Company, 2000

KODAK Gray Scale

C

Y

M

Kodak
LICENSED PRODUCT



一
流
礼
時
乃
右
被

76
1103



五
三
二
一

長
壽
寺
藏

佛の記(大般若目録)

一 阿耨多羅三藐三菩提の因
 一 阿耨多羅三藐三菩提の果
 一 阿耨多羅三藐三菩提の因
 一 阿耨多羅三藐三菩提の果
 一 阿耨多羅三藐三菩提の因
 一 阿耨多羅三藐三菩提の果
 一 阿耨多羅三藐三菩提の因
 一 阿耨多羅三藐三菩提の果

門 種 6
番 1103
卷



徳朝祀時大報目錄

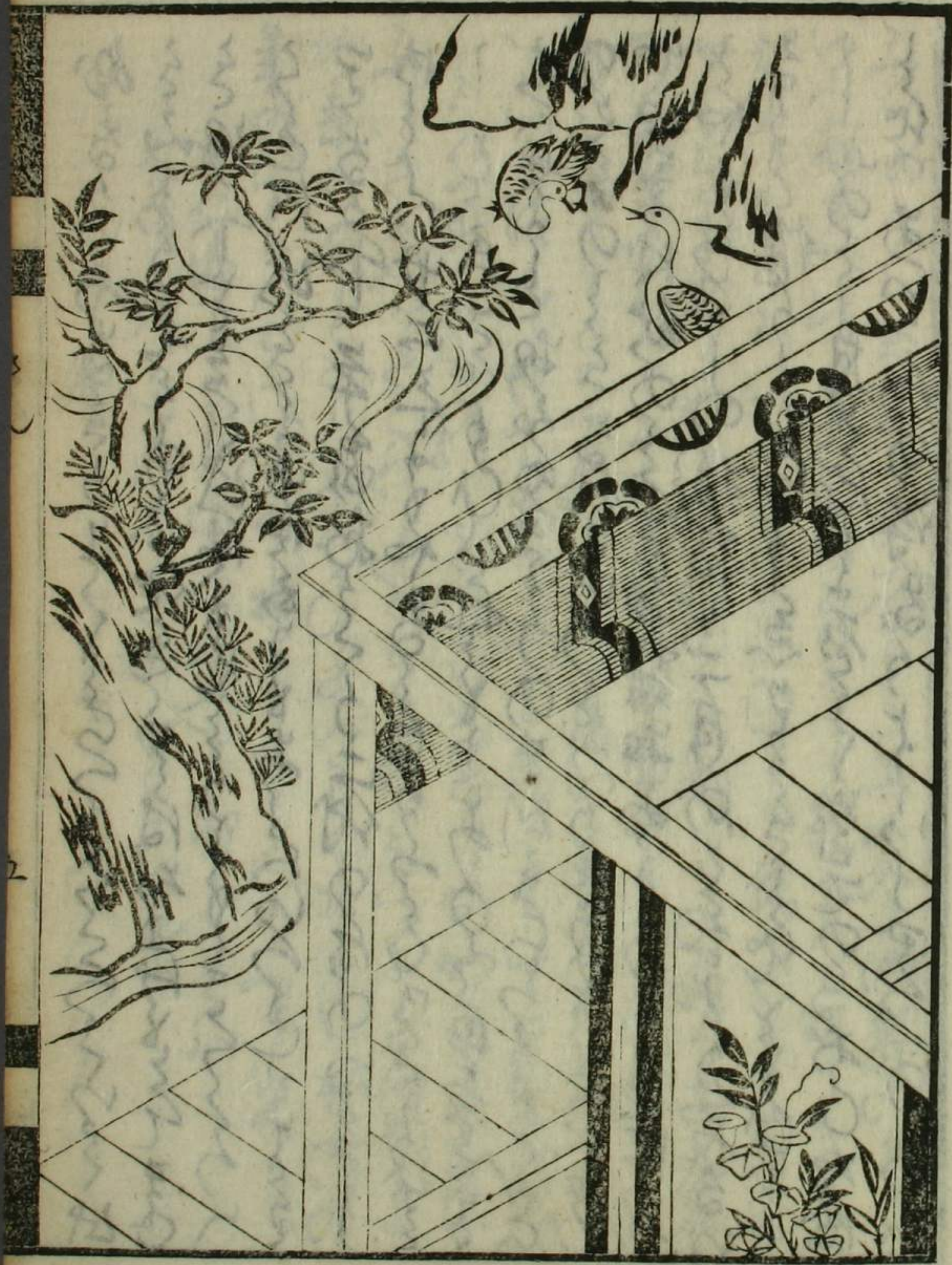
一 けりしとらう君恩批判
一 見やまのく
一 回しつのもろ
一 回ふらみは
一 回しつのもろ
一 回しぬま
一 回しぬま

Handwritten text in a cursive script, likely a form of shorthand or a specific dialect. The text is densely packed and fills most of the page.

Handwritten text in a cursive script, similar to the left page. It includes a circular emblem with a five-petaled flower design.



神の天の
天の



Handwritten text in a cursive script, likely a medieval manuscript. The text is written in a single column and appears to be a list or a series of entries, possibly related to a calendar or a record of events. The script is dense and characteristic of the late Gothic or early modern period.

Handwritten text in a cursive script, likely a medieval manuscript. The text is written in a single column and appears to be a list or a series of entries, possibly related to a calendar or a record of events. The script is dense and characteristic of the late Gothic or early modern period.

Handwritten text in a cursive script, possibly a letter or a page from a manuscript. The text is written in a dark ink on aged paper. The script is dense and fills most of the page. There is a decorative floral ornament at the end of the text.



Handwritten text in a cursive script, similar to the left page. It appears to be a continuation of the text or a separate entry. The script is consistent with the left page. There is a decorative circular ornament at the end of the text.



Handwritten text in a cursive script, likely a list or account, starting with a large initial letter.



Continuation of handwritten text in a cursive script, appearing to be a list or account.

Handwritten text in a cursive script, likely a list or account, starting with a large initial letter.



Handwritten text in a cursive script, likely a list or account, starting with a large initial letter.

Small handwritten text or mark at the bottom of the page.

Handwritten text in a cursive script, likely a historical document or manuscript. The text is written in a dense, flowing hand across the page.

Handwritten text in a cursive script, likely a historical document or manuscript. The text is written in a dense, flowing hand across the page.

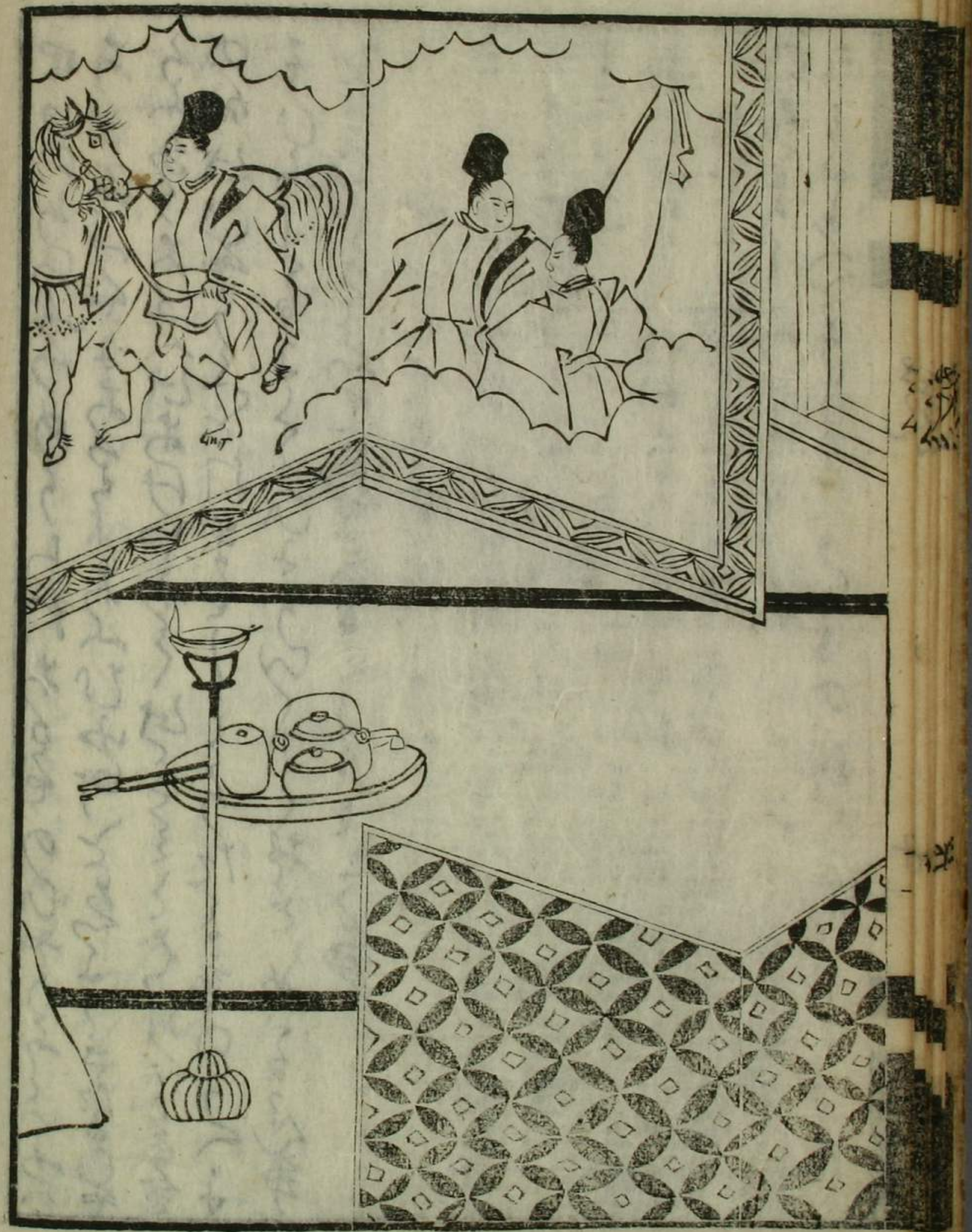
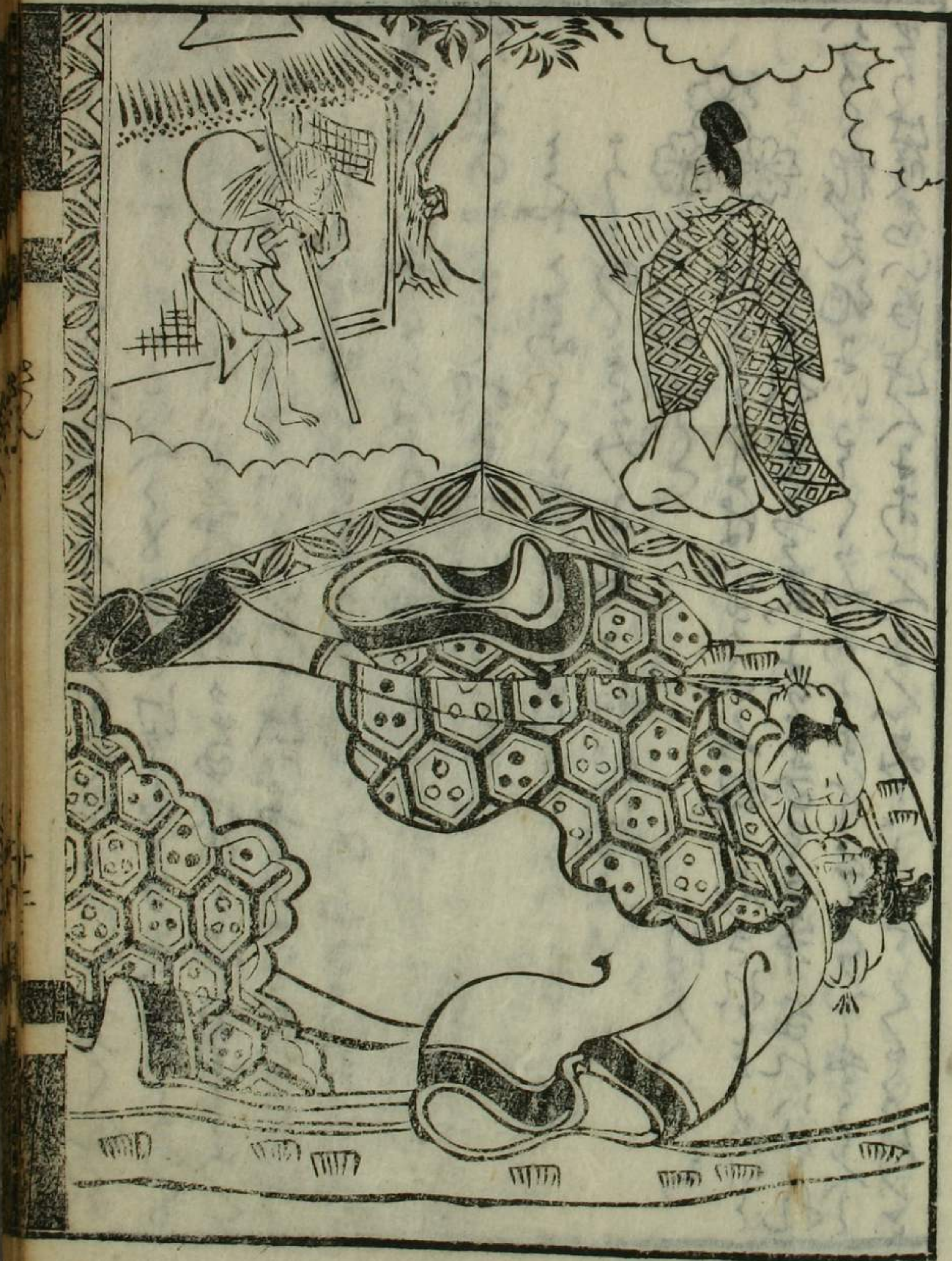


Handwritten text in a cursive script, likely a list or account. The text is written in a dark ink on aged paper. It begins with a large initial 'A' and continues with several lines of text, including words like 'A', 'B', 'C', 'D', 'E', 'F', 'G', 'H', 'I', 'K', 'L', 'M', 'N', 'O', 'P', 'Q', 'R', 'S', 'T', 'U', 'V', 'W', 'X', 'Y', 'Z'. The text is arranged in a single column and is enclosed in a simple rectangular border.

Handwritten text in a cursive script, likely a list or account. The text is written in a dark ink on aged paper. It begins with a large initial 'A' and continues with several lines of text, including words like 'A', 'B', 'C', 'D', 'E', 'F', 'G', 'H', 'I', 'K', 'L', 'M', 'N', 'O', 'P', 'Q', 'R', 'S', 'T', 'U', 'V', 'W', 'X', 'Y', 'Z'. The text is arranged in a single column and is enclosed in a simple rectangular border.

1st
 2nd
 3rd
 4th
 5th
 6th
 7th
 8th
 9th
 10th
 11th
 12th
 13th
 14th
 15th
 16th
 17th
 18th
 19th
 20th
 21st
 22nd
 23rd
 24th
 25th
 26th
 27th
 28th
 29th
 30th
 31st
 32nd
 33rd
 34th
 35th
 36th
 37th
 38th
 39th
 40th
 41st
 42nd
 43rd
 44th
 45th
 46th
 47th
 48th
 49th
 50th
 51st
 52nd
 53rd
 54th
 55th
 56th
 57th
 58th
 59th
 60th
 61st
 62nd
 63rd
 64th
 65th
 66th
 67th
 68th
 69th
 70th
 71st
 72nd
 73rd
 74th
 75th
 76th
 77th
 78th
 79th
 80th
 81st
 82nd
 83rd
 84th
 85th
 86th
 87th
 88th
 89th
 90th
 91st
 92nd
 93rd
 94th
 95th
 96th
 97th
 98th
 99th
 100th

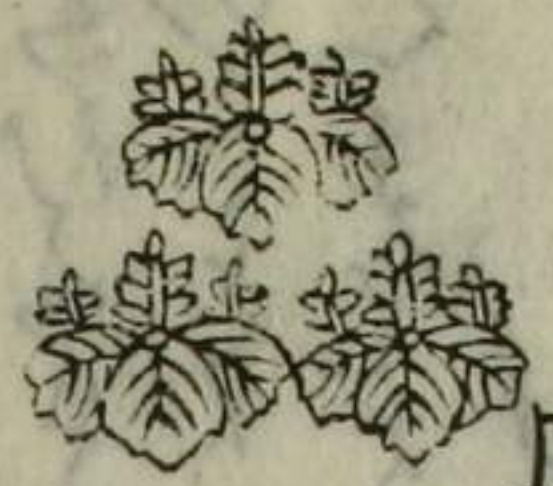
1st
 2nd
 3rd
 4th
 5th
 6th
 7th
 8th
 9th
 10th
 11th
 12th
 13th
 14th
 15th
 16th
 17th
 18th
 19th
 20th
 21st
 22nd
 23rd
 24th
 25th
 26th
 27th
 28th
 29th
 30th
 31st
 32nd
 33rd
 34th
 35th
 36th
 37th
 38th
 39th
 40th
 41st
 42nd
 43rd
 44th
 45th
 46th
 47th
 48th
 49th
 50th
 51st
 52nd
 53rd
 54th
 55th
 56th
 57th
 58th
 59th
 60th
 61st
 62nd
 63rd
 64th
 65th
 66th
 67th
 68th
 69th
 70th
 71st
 72nd
 73rd
 74th
 75th
 76th
 77th
 78th
 79th
 80th
 81st
 82nd
 83rd
 84th
 85th
 86th
 87th
 88th
 89th
 90th
 91st
 92nd
 93rd
 94th
 95th
 96th
 97th
 98th
 99th
 100th



Handwritten text in a cursive script, possibly a letter or a page from a manuscript. The text is written in a dark ink on aged paper. It begins with a large, decorative initial letter, possibly 'S' or 'S', followed by several lines of text. The script is highly stylized and difficult to decipher. There are some faint markings and a small floral illustration near the top of the page.

Handwritten text in a cursive script, similar to the left page. The text is written in a dark ink on aged paper. It begins with a large, decorative initial letter, possibly 'S' or 'S', followed by several lines of text. The script is highly stylized and difficult to decipher. There are some faint markings and a small floral illustration near the top of the page.

Handwritten text in a cursive script, likely a letter or a page from a diary. The text is dense and fills most of the page.



Handwritten text in a cursive script, possibly a continuation of the text on the previous page or a separate entry. It includes some vertical text on the right side.

Handwritten text in a cursive script, continuing the narrative or list from the previous page. The text is written in a consistent style throughout the page.

Handwritten text in a cursive script, likely a list or account.



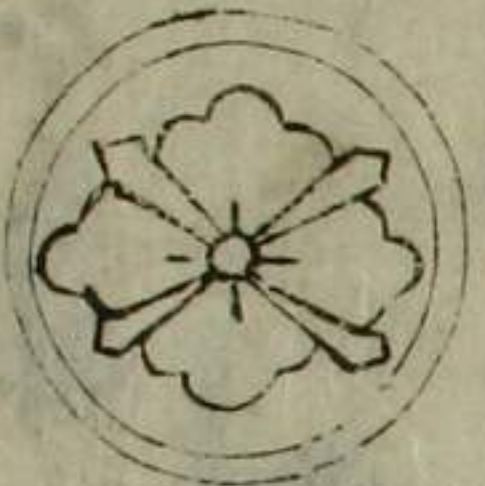
Main body of handwritten text in a cursive script, continuing the list or account.

Handwritten text in a cursive script, possibly a section header or a specific entry.



Main body of handwritten text in a cursive script, continuing the list or account.

Handwritten text in a cursive script, possibly a section header or a specific entry.



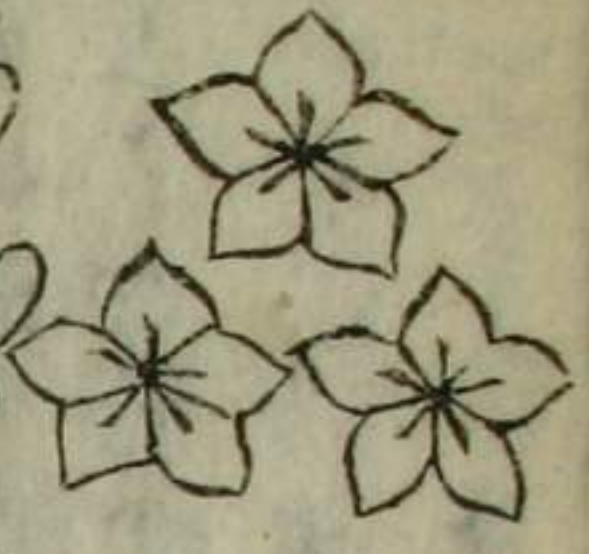
Main body of handwritten text in a cursive script, continuing the list or account.

The first page of the manuscript contains a large decorative initial 'A' at the top center. The text is written in a cursive script, likely a form of Gothic or early modern hand. The text is arranged in several lines, with some words appearing to be in a different script or dialect than others, possibly indicating a mix of languages or a specific regional dialect. The text is enclosed in a simple rectangular border.

The second page of the manuscript features a decorative initial 'A' at the top center, similar to the one on the first page. The text is written in a cursive script, continuing the style from the first page. The text is arranged in several lines, with some words appearing to be in a different script or dialect than others. The text is enclosed in a simple rectangular border.

Handwritten text in a cursive script, likely a letter or a page from a manuscript. The text is densely packed and spans most of the page.

Handwritten text in a cursive script, likely a letter or a page from a manuscript. The text is densely packed and spans most of the page.



1. 2. 3. 4. 5. 6. 7. 8. 9. 10. 11. 12. 13. 14. 15. 16. 17. 18. 19. 20. 21. 22. 23. 24. 25. 26. 27. 28. 29. 30. 31. 32. 33. 34. 35. 36. 37. 38. 39. 40. 41. 42. 43. 44. 45. 46. 47. 48. 49. 50. 51. 52. 53. 54. 55. 56. 57. 58. 59. 60. 61. 62. 63. 64. 65. 66. 67. 68. 69. 70. 71. 72. 73. 74. 75. 76. 77. 78. 79. 80. 81. 82. 83. 84. 85. 86. 87. 88. 89. 90. 91. 92. 93. 94. 95. 96. 97. 98. 99. 100.



1. 2. 3. 4. 5. 6. 7. 8. 9. 10. 11. 12. 13. 14. 15. 16. 17. 18. 19. 20. 21. 22. 23. 24. 25. 26. 27. 28. 29. 30. 31. 32. 33. 34. 35. 36. 37. 38. 39. 40. 41. 42. 43. 44. 45. 46. 47. 48. 49. 50. 51. 52. 53. 54. 55. 56. 57. 58. 59. 60. 61. 62. 63. 64. 65. 66. 67. 68. 69. 70. 71. 72. 73. 74. 75. 76. 77. 78. 79. 80. 81. 82. 83. 84. 85. 86. 87. 88. 89. 90. 91. 92. 93. 94. 95. 96. 97. 98. 99. 100.

11
12
13
14
15
16
17
18
19
20
21
22
23
24
25
26
27
28
29
30
31
32
33
34
35
36
37
38
39
40
41
42
43
44
45
46
47
48
49
50
51
52
53
54
55
56
57
58
59
60
61
62
63
64
65
66
67
68
69
70
71
72
73
74
75
76
77
78
79
80
81
82
83
84
85
86
87
88
89
90
91
92
93
94
95
96
97
98
99
100

101
102
103
104
105
106
107
108
109
110
111
112
113
114
115
116
117
118
119
120
121
122
123
124
125
126
127
128
129
130
131
132
133
134
135
136
137
138
139
140
141
142
143
144
145
146
147
148
149
150
151
152
153
154
155
156
157
158
159
160
161
162
163
164
165
166
167
168
169
170
171
172
173
174
175
176
177
178
179
180
181
182
183
184
185
186
187
188
189
190
191
192
193
194
195
196
197
198
199
200

Handwritten text in a cursive script, likely a list or index. The text is arranged in a single column and includes various words and phrases, some of which are decorated with small floral motifs. The script is dense and fills most of the page.

Handwritten text in a cursive script, likely a list or index. The text is arranged in a single column and includes various words and phrases, some of which are decorated with small floral motifs. The script is dense and fills most of the page.

Handwritten text in a cursive script, likely a historical record or account.



Handwritten text in a cursive script, continuing the narrative or record.

Handwritten text in a cursive script, possibly a date or specific reference.

Handwritten text in a cursive script, continuing the narrative or record.

Handwritten text in a cursive script, likely a date or specific reference.



Handwritten text in a cursive script, continuing the narrative or record.

Handwritten text in a cursive script, possibly a date or specific reference.

Handwritten text in a cursive script, continuing the narrative or record.

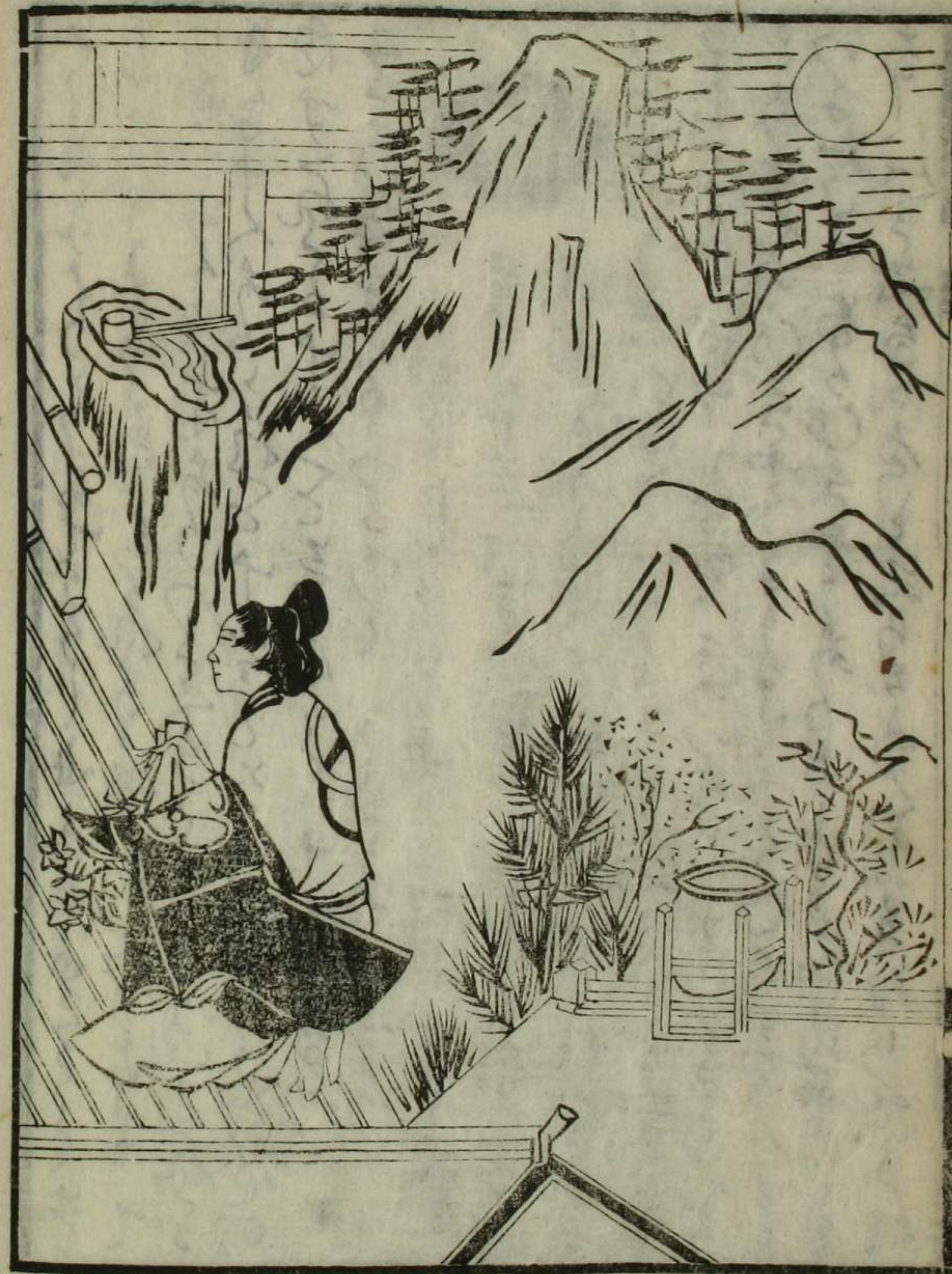
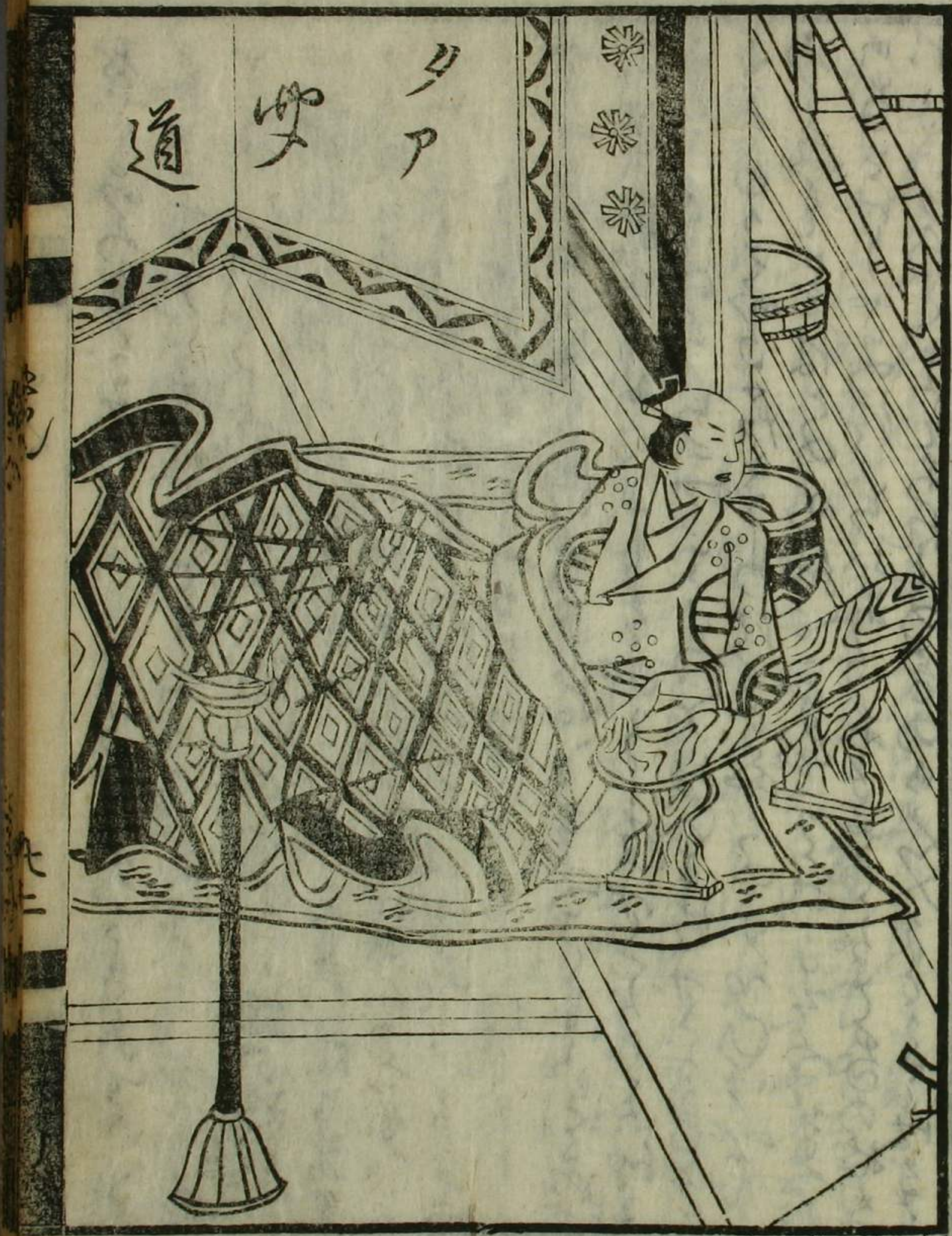


Handwritten text in a cursive script, continuing the narrative or record.

Handwritten text in a cursive script, possibly a date or specific reference.

Handwritten text in a cursive script, continuing the narrative or record.



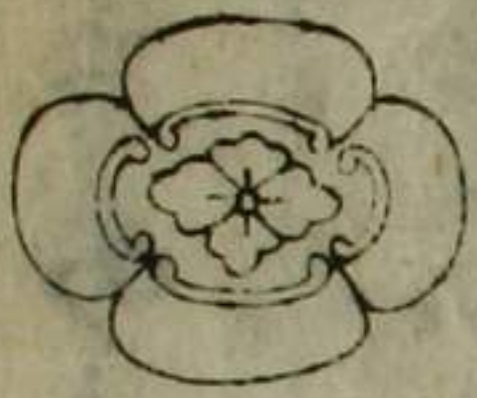


Handwritten text in a cursive script, likely a medieval manuscript. The text is written in a dark ink on aged paper. The first line begins with a large, decorative initial letter, possibly 'D' or 'Dn', followed by several lines of text.



Handwritten text in a cursive script, continuing from the previous page. The text is written in a dark ink on aged paper. The script is dense and fills most of the page.

Handwritten text in a cursive script, likely a medieval manuscript. The text is written in a dark ink on aged paper. The script is dense and fills most of the page.



Handwritten text in a cursive script, likely a continuation from the reverse side, starting with a small decorative flourish.

Main body of handwritten text in a cursive script, occupying the central portion of the page. It appears to be a continuous passage of text.

Main body of handwritten text in a cursive script, occupying the central portion of the page. It appears to be a continuous passage of text.

Handwritten text in a cursive script, likely a historical document or manuscript. The text is written in a dark ink on aged paper. The script is dense and fills most of the page. There are some faint markings on the left margin, possibly indicating page numbers or section markers.

Handwritten text in a cursive script, likely a historical document or manuscript. The text is written in a dark ink on aged paper. The script is dense and fills most of the page. There are some faint markings on the right margin, possibly indicating page numbers or section markers.



Handwritten text in a cursive script, likely a historical record or account, starting with a large initial letter.



Handwritten text in a cursive script, continuing the narrative or record from the previous page.



Handwritten text in a cursive script, the main body of the page's content.

Handwritten text in a cursive script, likely a medieval manuscript. The text is written in a single column and appears to be a continuous passage of prose or a list of entries.

Handwritten text, possibly a section header or a specific entry, written in a cursive script.

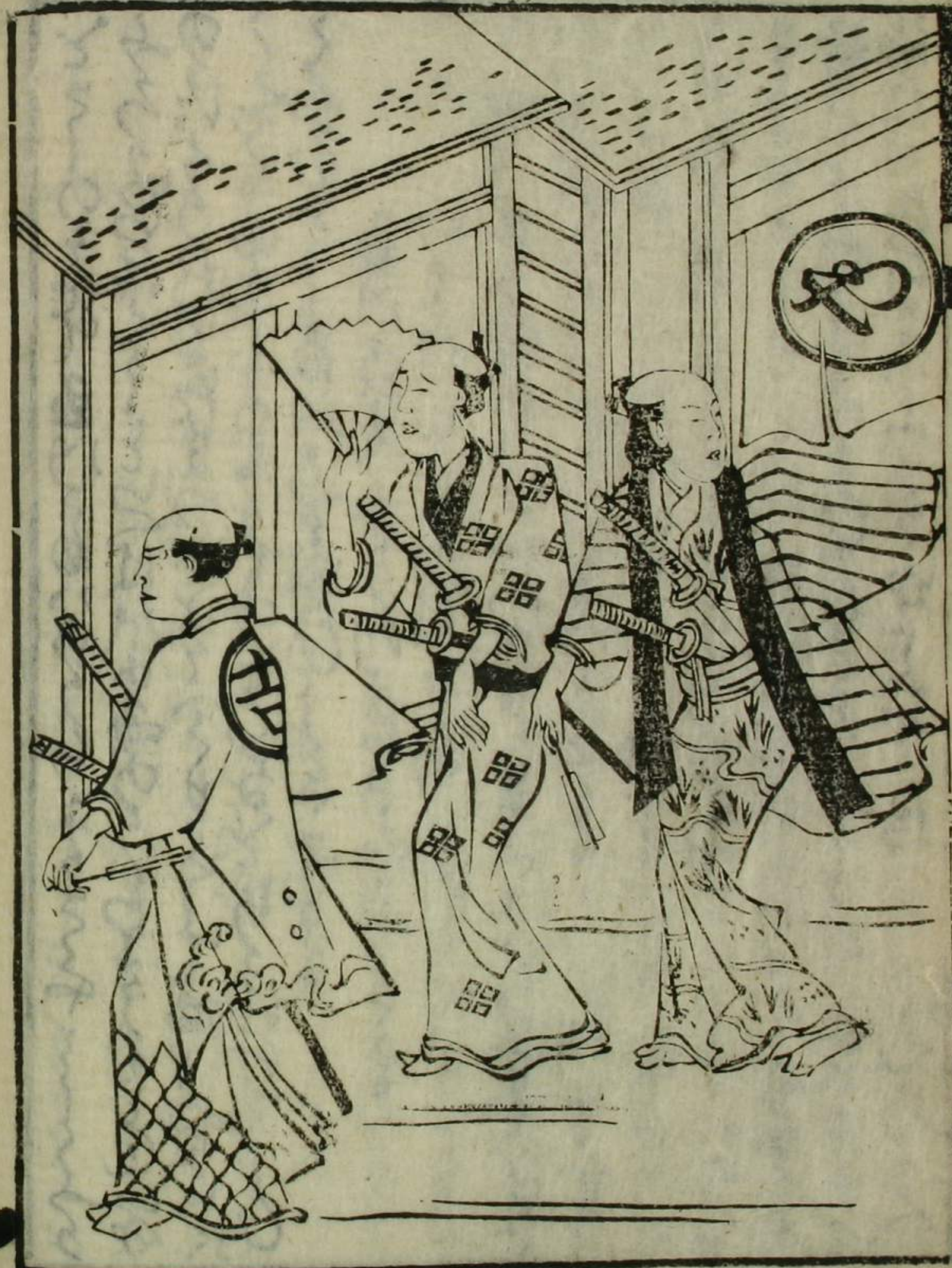
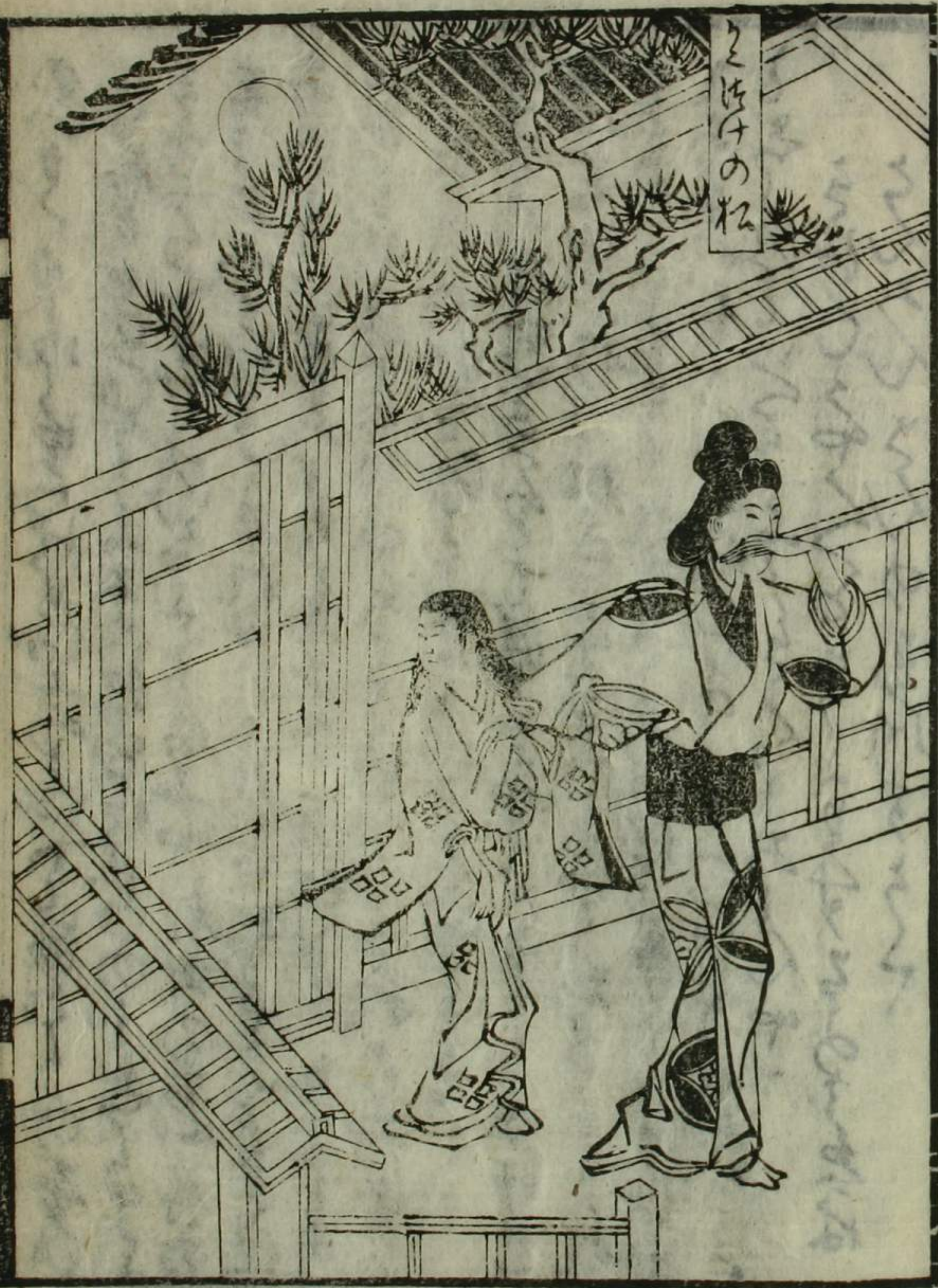
Handwritten text in a cursive script, continuing the text from the previous section. The script is dense and characteristic of the late medieval period.

Handwritten text in a cursive script, likely a medieval manuscript. The text is written in a single column and appears to be a continuous passage of prose or a list of entries.



Handwritten text, possibly a section header or a specific entry, written in a cursive script.

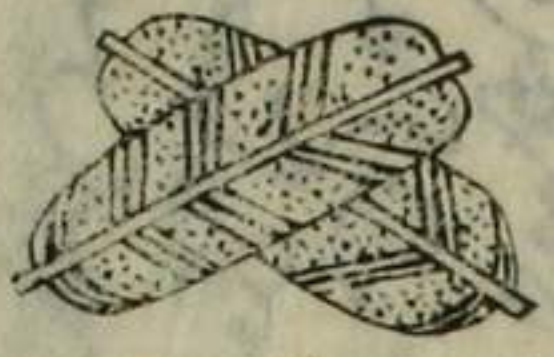
Handwritten text in a cursive script, continuing the text from the previous section. The script is dense and characteristic of the late medieval period.



Handwritten text in a cursive script, likely a historical record or account. The text is written in a single column and is enclosed in a decorative border. A small floral ornament is visible at the top right of the page.

Handwritten text in a cursive script, likely a historical record or account. The text is written in a single column and is enclosed in a decorative border.

Handwritten text in a cursive script, likely a medieval manuscript. The text is arranged in approximately 15 lines. A decorative initial 'D' is visible at the beginning of the first line. The script is dense and characteristic of the late Gothic or early modern period.



Handwritten text in a cursive script, likely a medieval manuscript. The text is arranged in approximately 15 lines. A decorative initial 'D' is visible at the beginning of the first line. The script is dense and characteristic of the late Gothic or early modern period.

Handwritten text in a cursive script, possibly a list or account, with several lines of text.

Handwritten text in a cursive script, continuing the list or account, with several lines of text.

Handwritten text in a cursive script, including a decorative floral flourish at the top and several lines of text.

150812

150812

150812

150812

150812

150812

150812

150812

150812

150812

150812

150812

150812

150812

150812

150812

150812

150812

150812

150812

150812

150812

150812

150812

150812

150812

150812

150812

150812

150812

150812

150812

150812

150812

150812

150812

150812

150812

150812

150812

150812

150812

1 The first form
 2 The second form
 3 The third form
 4 The fourth form
 5 The fifth form
 6 The sixth form
 7 The seventh form
 8 The eighth form
 9 The ninth form
 10 The tenth form
 11 The eleventh form
 12 The twelfth form
 13 The thirteenth form
 14 The fourteenth form
 15 The fifteenth form
 16 The sixteenth form
 17 The seventeenth form
 18 The eighteenth form
 19 The nineteenth form
 20 The twentieth form
 21 The twenty first form
 22 The twenty second form
 23 The twenty third form
 24 The twenty fourth form
 25 The twenty fifth form
 26 The twenty sixth form
 27 The twenty seventh form
 28 The twenty eighth form
 29 The twenty ninth form
 30 The thirtieth form
 31 The thirty first form
 32 The thirty second form
 33 The thirty third form
 34 The thirty fourth form
 35 The thirty fifth form
 36 The thirty sixth form
 37 The thirty seventh form
 38 The thirty eighth form
 39 The thirty ninth form
 40 The fortieth form
 41 The forty first form
 42 The forty second form
 43 The forty third form
 44 The forty fourth form
 45 The forty fifth form
 46 The forty sixth form
 47 The forty seventh form
 48 The forty eighth form
 49 The forty ninth form
 50 The fiftieth form

1 The first form
 2 The second form
 3 The third form
 4 The fourth form
 5 The fifth form
 6 The sixth form
 7 The seventh form
 8 The eighth form
 9 The ninth form
 10 The tenth form
 11 The eleventh form
 12 The twelfth form
 13 The thirteenth form
 14 The fourteenth form
 15 The fifteenth form
 16 The sixteenth form
 17 The seventeenth form
 18 The eighteenth form
 19 The nineteenth form
 20 The twentieth form
 21 The twenty first form
 22 The twenty second form
 23 The twenty third form
 24 The twenty fourth form
 25 The twenty fifth form
 26 The twenty sixth form
 27 The twenty seventh form
 28 The twenty eighth form
 29 The twenty ninth form
 30 The thirtieth form
 31 The thirty first form
 32 The thirty second form
 33 The thirty third form
 34 The thirty fourth form
 35 The thirty fifth form
 36 The thirty sixth form
 37 The thirty seventh form
 38 The thirty eighth form
 39 The thirty ninth form
 40 The fortieth form
 41 The forty first form
 42 The forty second form
 43 The forty third form
 44 The forty fourth form
 45 The forty fifth form
 46 The forty sixth form
 47 The forty seventh form
 48 The forty eighth form
 49 The forty ninth form
 50 The fiftieth form

1 234 5 6 7 8 9 10 11 12 13 14 15 16 17 18 19 20 21 22 23 24 25 26 27 28 29 30 31 32 33 34 35 36 37 38 39 40 41 42 43 44 45 46 47 48 49 50 51 52 53 54 55 56 57 58 59 60 61 62 63 64 65 66 67 68 69 70 71 72 73 74 75 76 77 78 79 80 81 82 83 84 85 86 87 88 89 90 91 92 93 94 95 96 97 98 99 100



毛傳之言是者，無罪聞之者，足以自戒。

234 5 6 7 8 9 10 11 12 13 14 15 16 17 18 19 20 21 22 23 24 25 26 27 28 29 30 31 32 33 34 35 36 37 38 39 40 41 42 43 44 45 46 47 48 49 50 51 52 53 54 55 56 57 58 59 60 61 62 63 64 65 66 67 68 69 70 71 72 73 74 75 76 77 78 79 80 81 82 83 84 85 86 87 88 89 90 91 92 93 94 95 96 97 98 99 100

1 234 5 6 7 8 9 10 11 12 13 14 15 16 17 18 19 20 21 22 23 24 25 26 27 28 29 30 31 32 33 34 35 36 37 38 39 40 41 42 43 44 45 46 47 48 49 50 51 52 53 54 55 56 57 58 59 60 61 62 63 64 65 66 67 68 69 70 71 72 73 74 75 76 77 78 79 80 81 82 83 84 85 86 87 88 89 90 91 92 93 94 95 96 97 98 99 100

Handwritten text in a cursive script, likely an early form of Japanese Kuzushiji, enclosed in a rectangular border. The text is written in dark ink on aged paper.

跋



三十七

