



覚

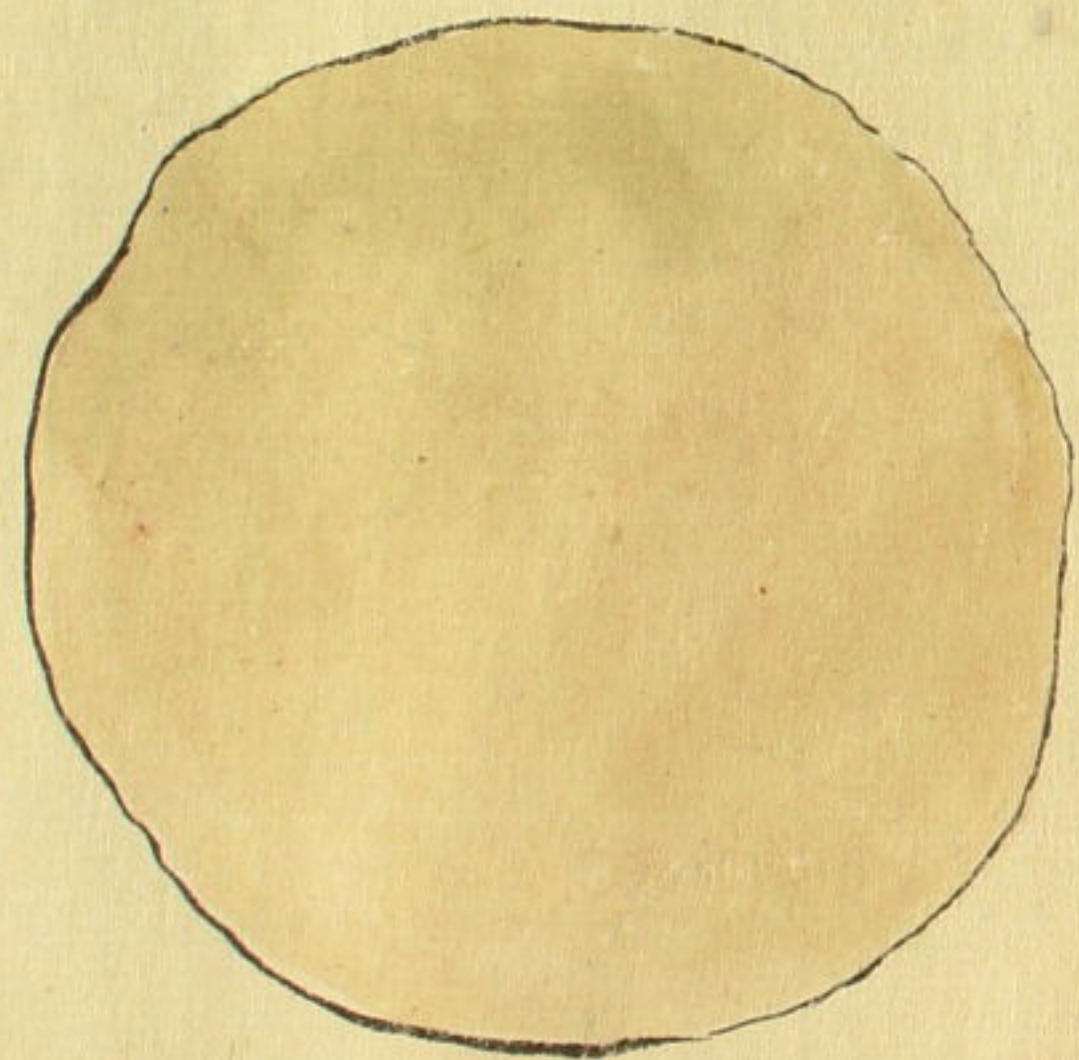
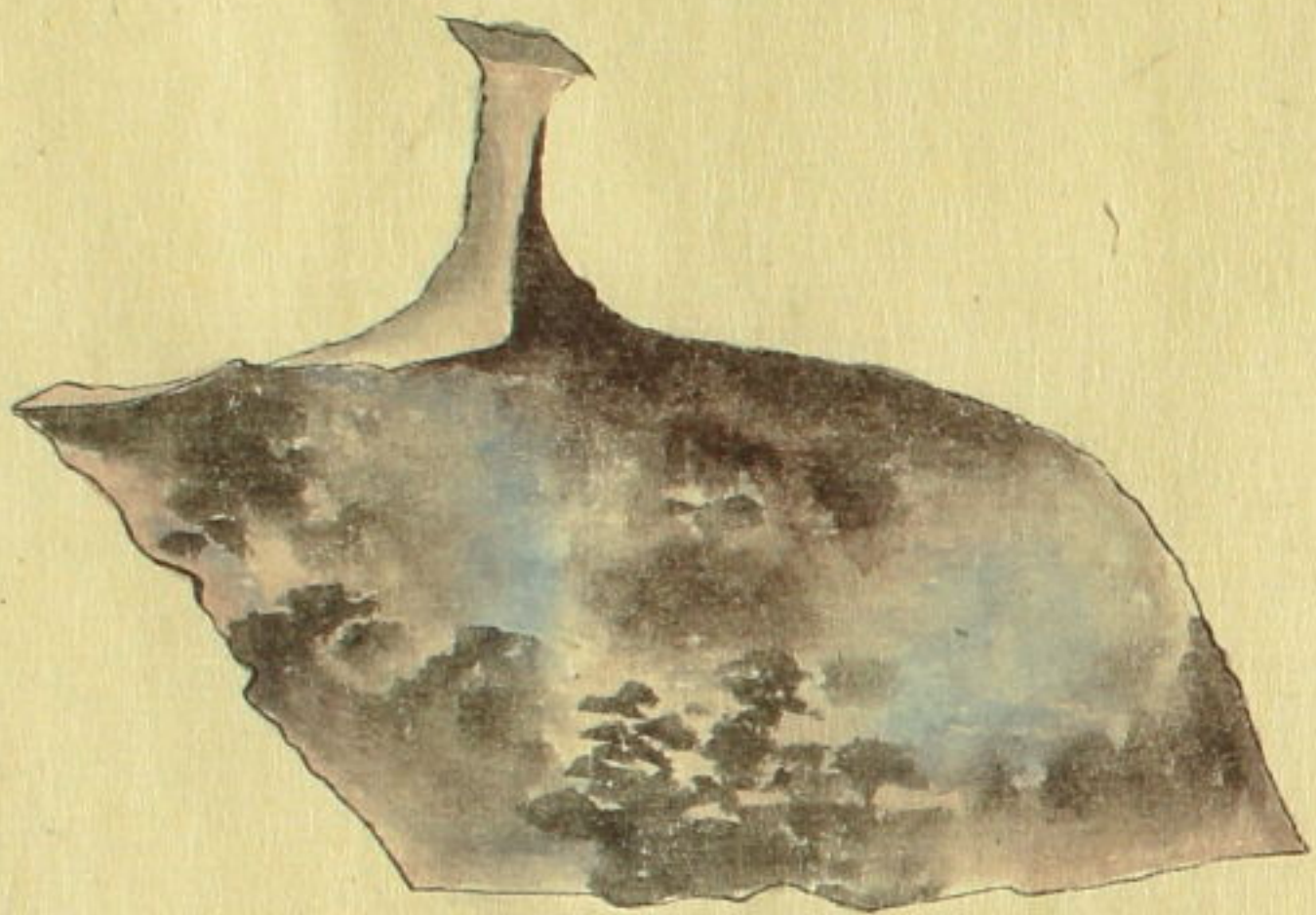
一兵庫磯堀出の年月候 漸尋舟左在
 中右者私高祖父高節高俊今井村城
 山与中山之林原居宅高建之高地形平均
 之割堀出之山中由右年号中不取智河雲
 凡此百年歳以前之候と存存先和年中
 にも有涉者山江及醫保書留未成之書
 史傳斗出右右説志大小江江有以處祖父
 父之耐分ノ魔免除之成山江当取之占備リ之書
 貸書之書高方紛不取返出之只今高之
 外之江書書依之世版書中書以之

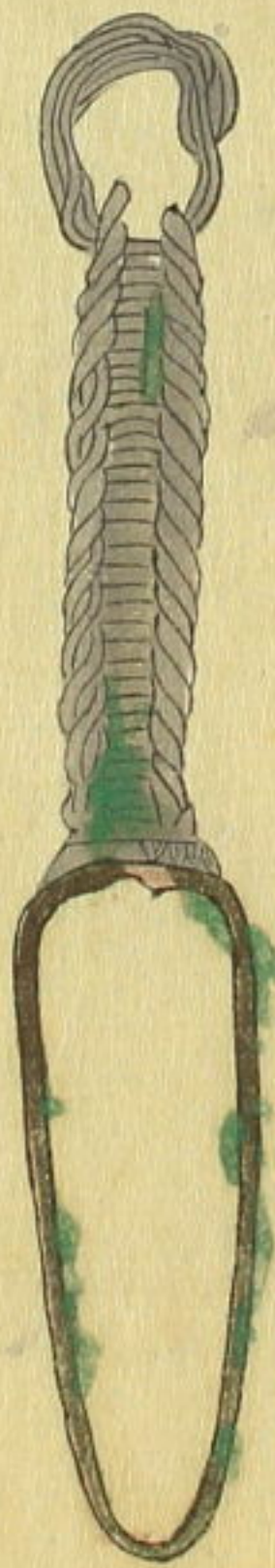
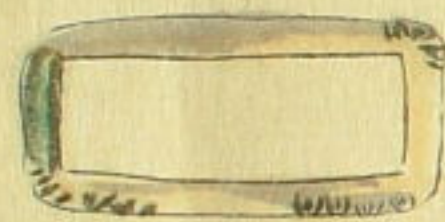
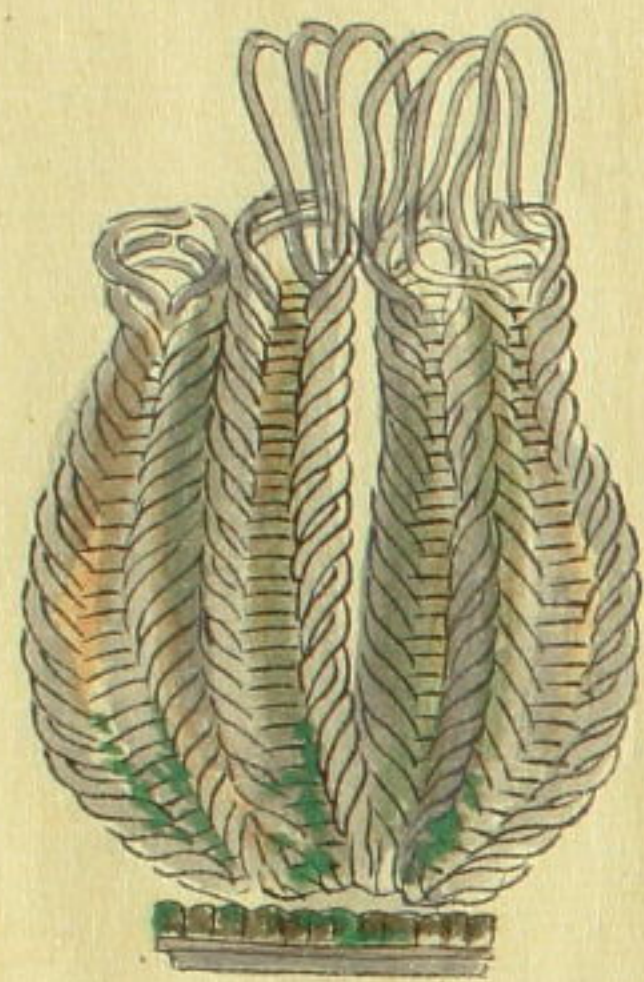
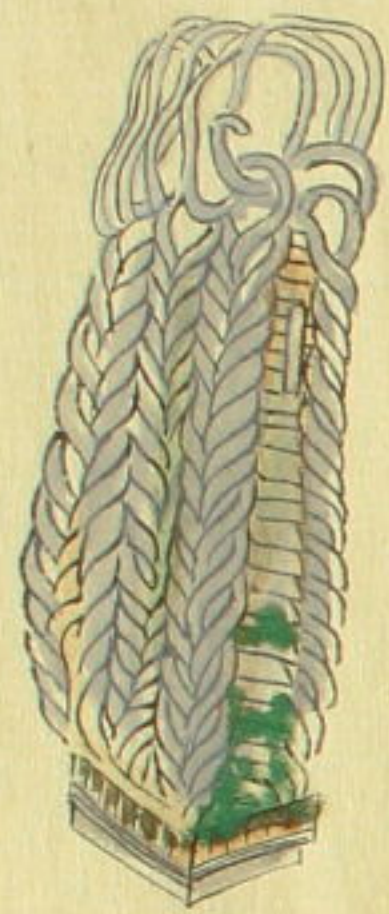
文化六年正月

津和行所

武藏國那賀郡今井村

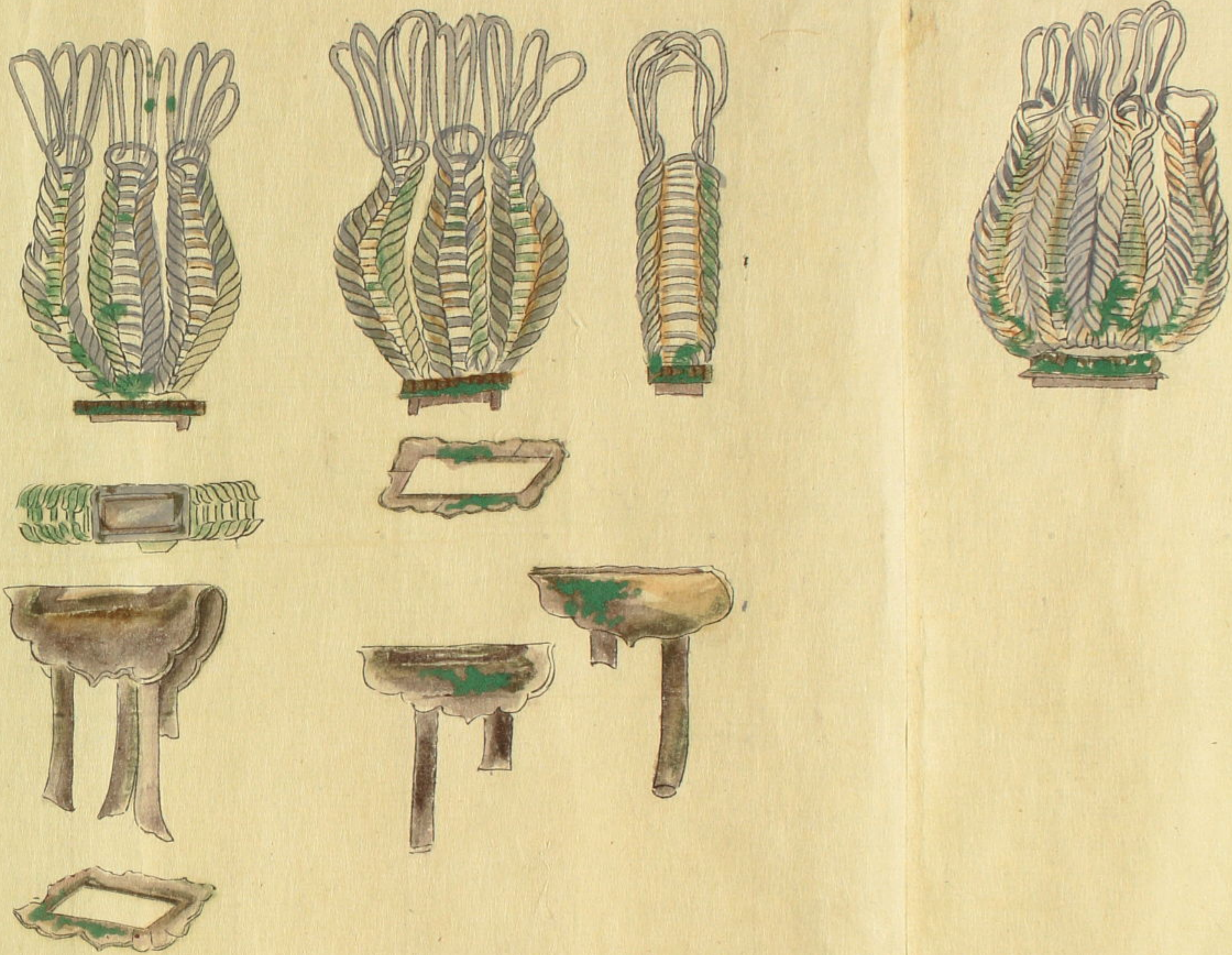
名之 高六

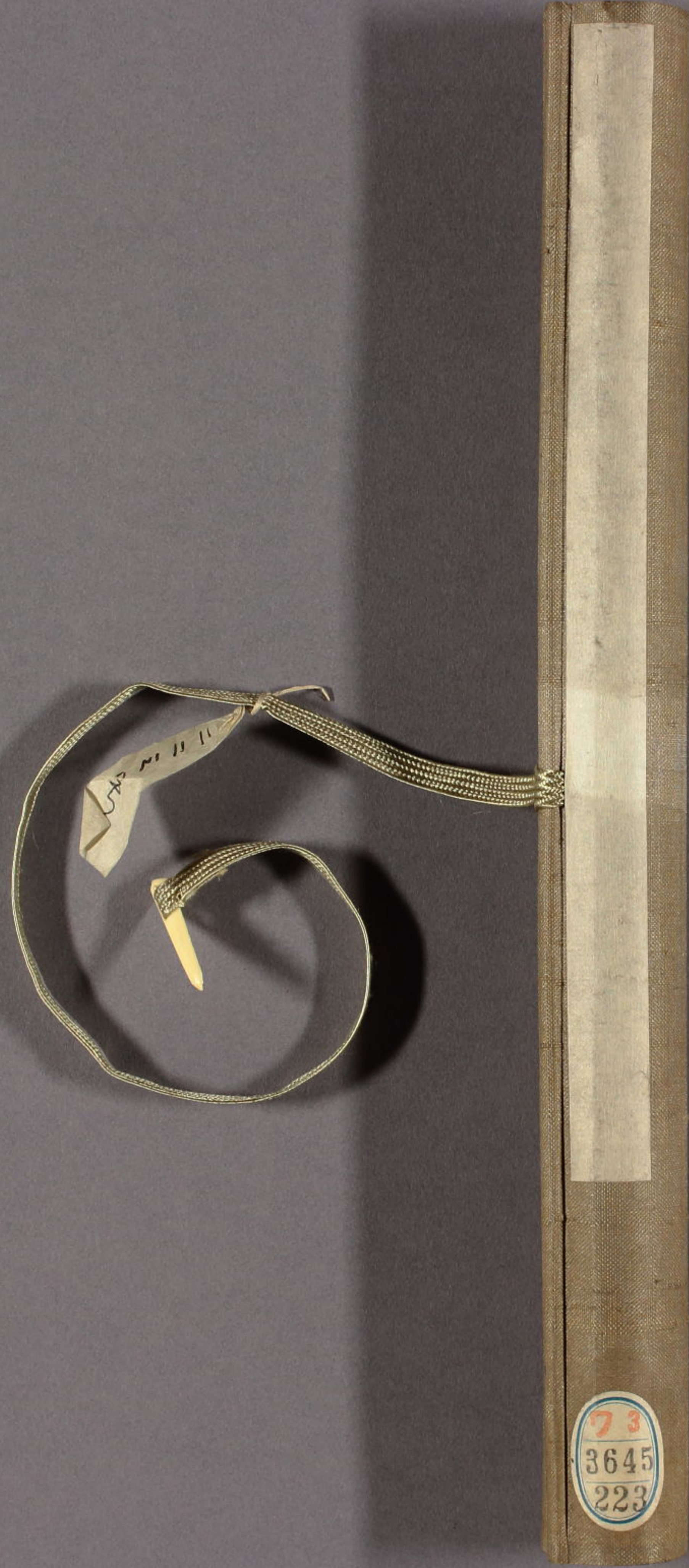




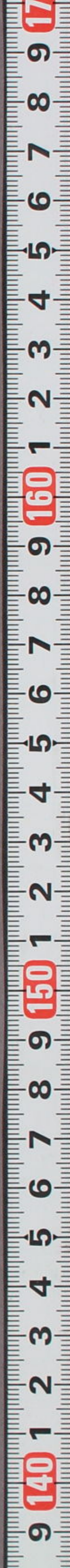
文化九件考六日摹畢

八幡百里





73
3645
223



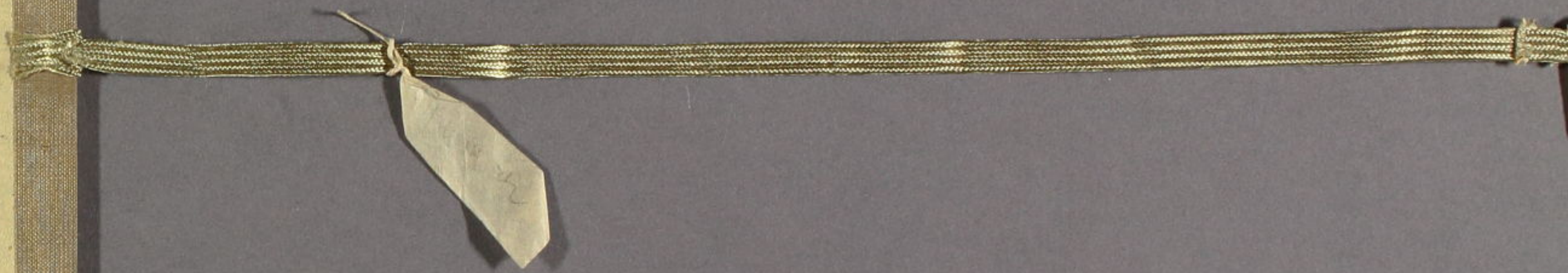


覺

都筑...
所片...
鎖

3645
273

3645
273





57 M II II

73
3645
223

