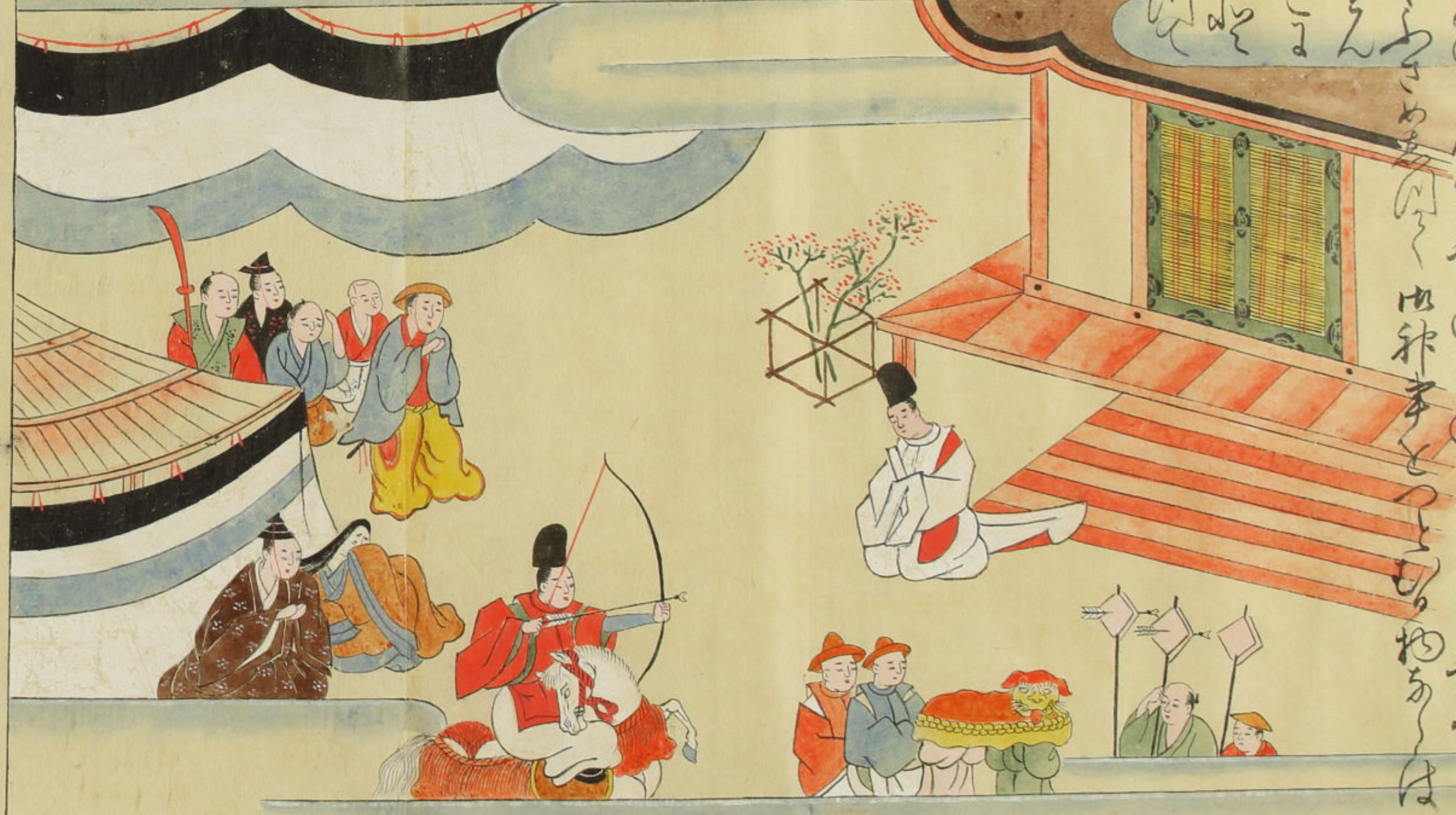


右細川出汝其跡を記写しぬ是ハ山流と云ふ古物流ハ
 巻物乃破き残りあり俗説ハ用明天皇乃中時其後ノ國流也
 長者乃む是世の姫ありひびき美人のやえありふき記
 海にせよなむ作られしものなりと云ふもみりて其後
 右細川出汝其跡を記写しぬ是ハ山流と云ふ古物流ハ
 巻物乃破き残りあり俗説ハ用明天皇乃中時其後ノ國流也
 長者乃む是世の姫ありひびき美人のやえありふき記
 海にせよなむ作られしものなりと云ふもみりて其後



辰方即
 小石記寛弘二年五月十四日
 賢平目左衛門左衛門出馬場
 左近騎射各三人又三度令馳
 厩馬次令射八的

右細川出汝其跡を記写しぬ是ハ山流と云ふ古物流ハ
 巻物乃破き残りあり俗説ハ用明天皇乃中時其後ノ國流也
 長者乃む是世の姫ありひびき美人のやえありふき記
 海にせよなむ作られしものなりと云ふもみりて其後
 右細川出汝其跡を記写しぬ是ハ山流と云ふ古物流ハ
 巻物乃破き残りあり俗説ハ用明天皇乃中時其後ノ國流也
 長者乃む是世の姫ありひびき美人のやえありふき記
 海にせよなむ作られしものなりと云ふもみりて其後

寛政六年甲寅五月十九日馬之

松岡清物辰方

文化十年十二月日騰馬

八幡興二重



Handwritten text in a cursive script, likely a historical document or manuscript. The text is written in dark ink on aged, yellowish paper. There are several lines of text, with some words or initials highlighted in red ink. The handwriting is dense and somewhat difficult to decipher due to its cursive nature. The text appears to be a list or a series of entries, possibly related to a collection or inventory.

Handwritten text, possibly a title or a specific entry, located in the middle of the page. It is written in a cursive script, similar to the main body of text.

23
3645
204