



内府公
御袍
冬

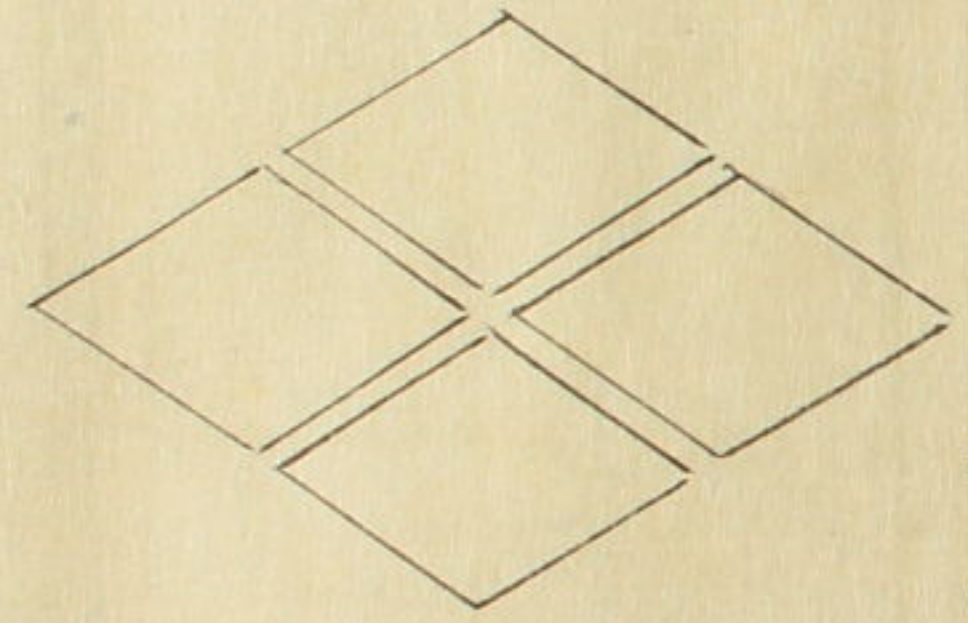


本間文庫



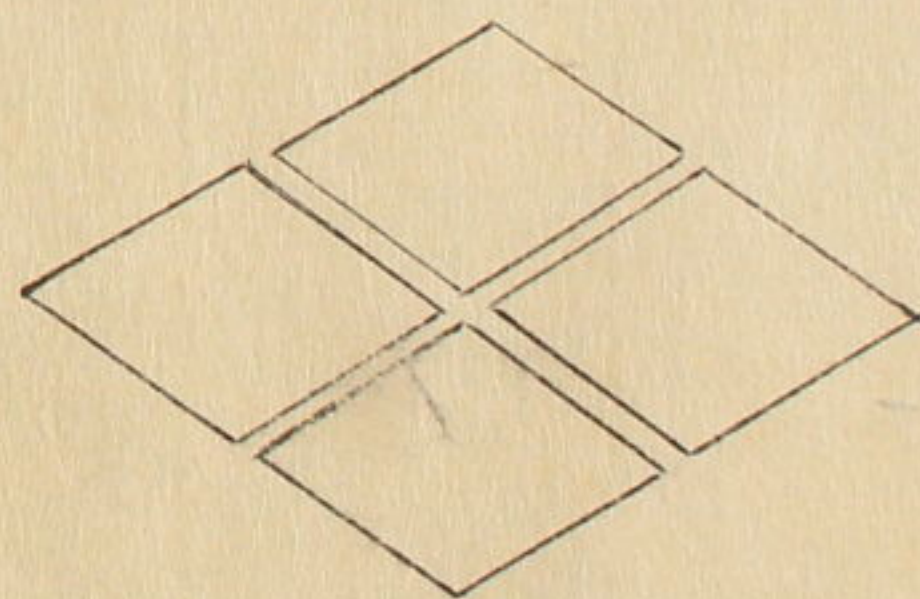
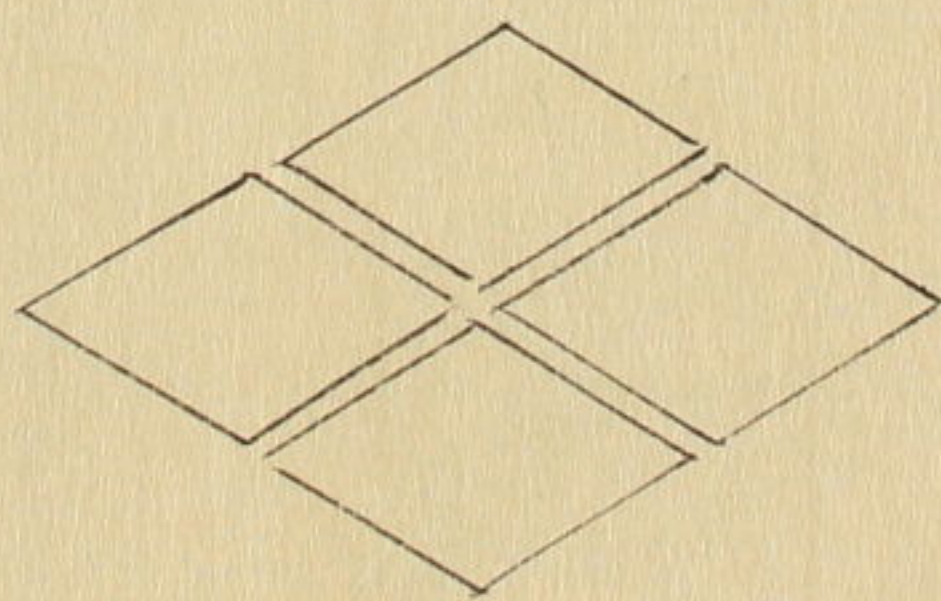
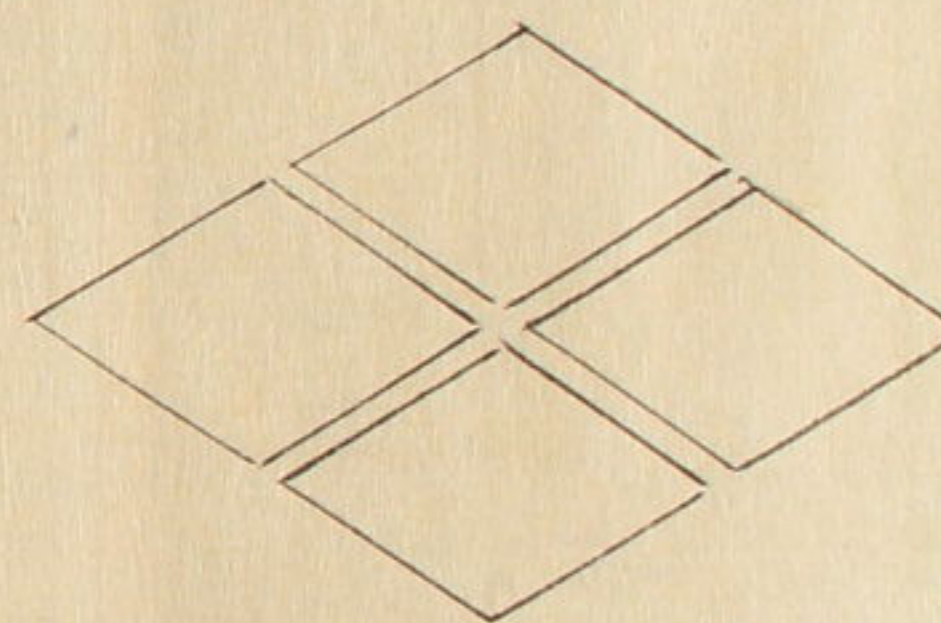
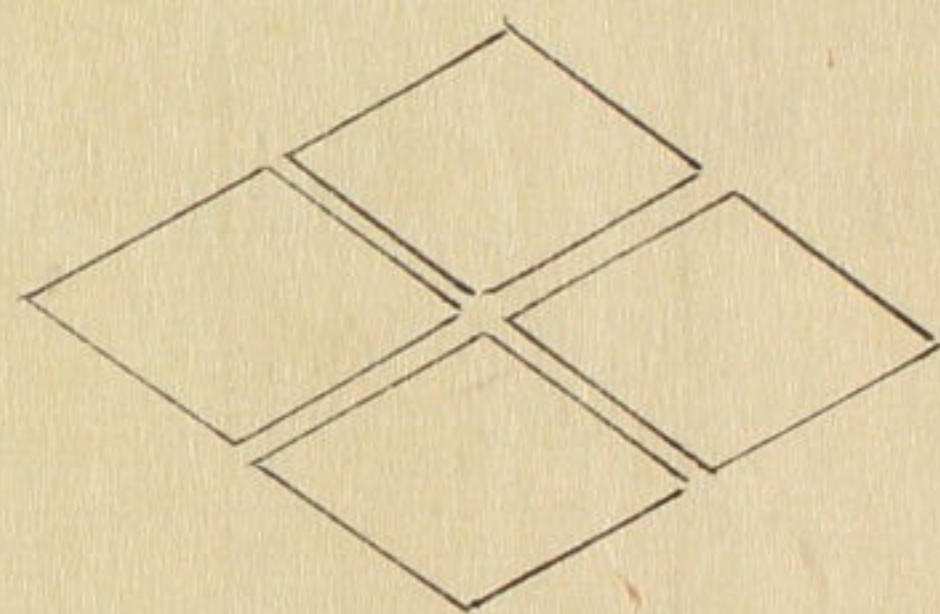
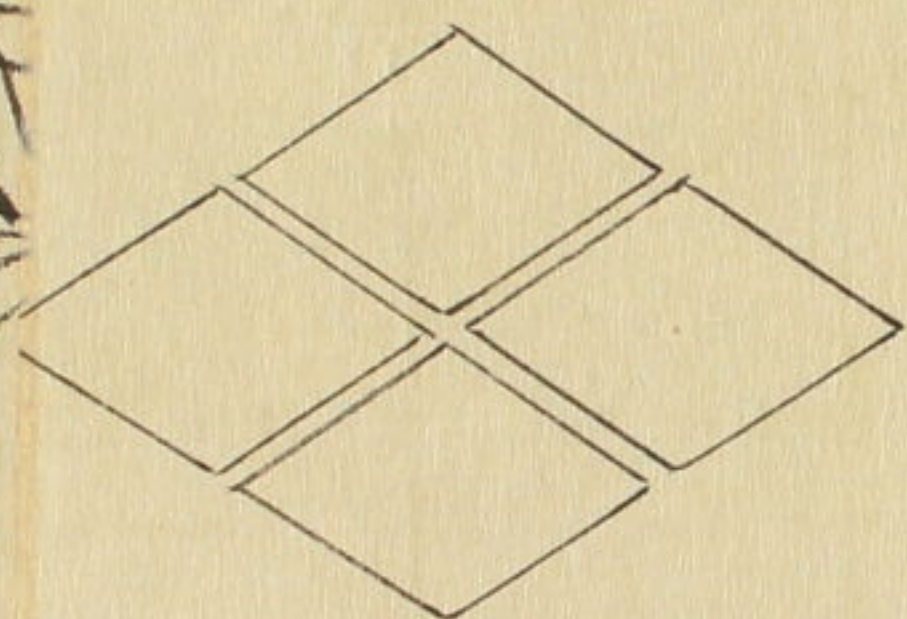
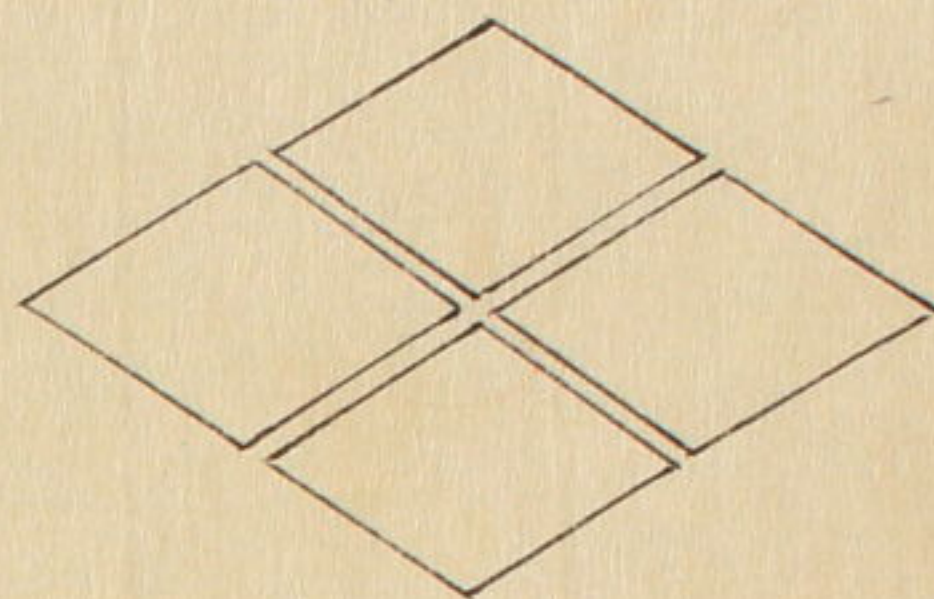
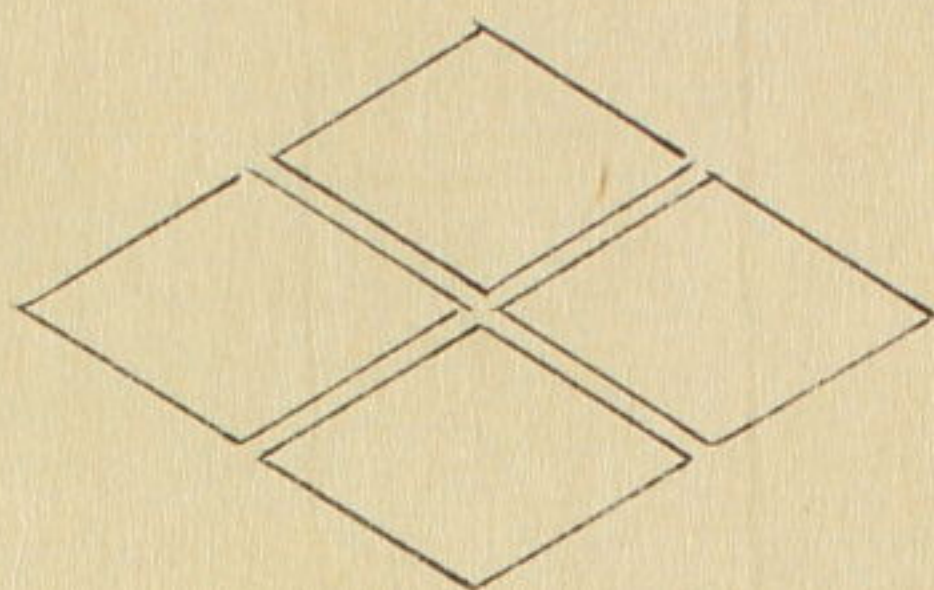
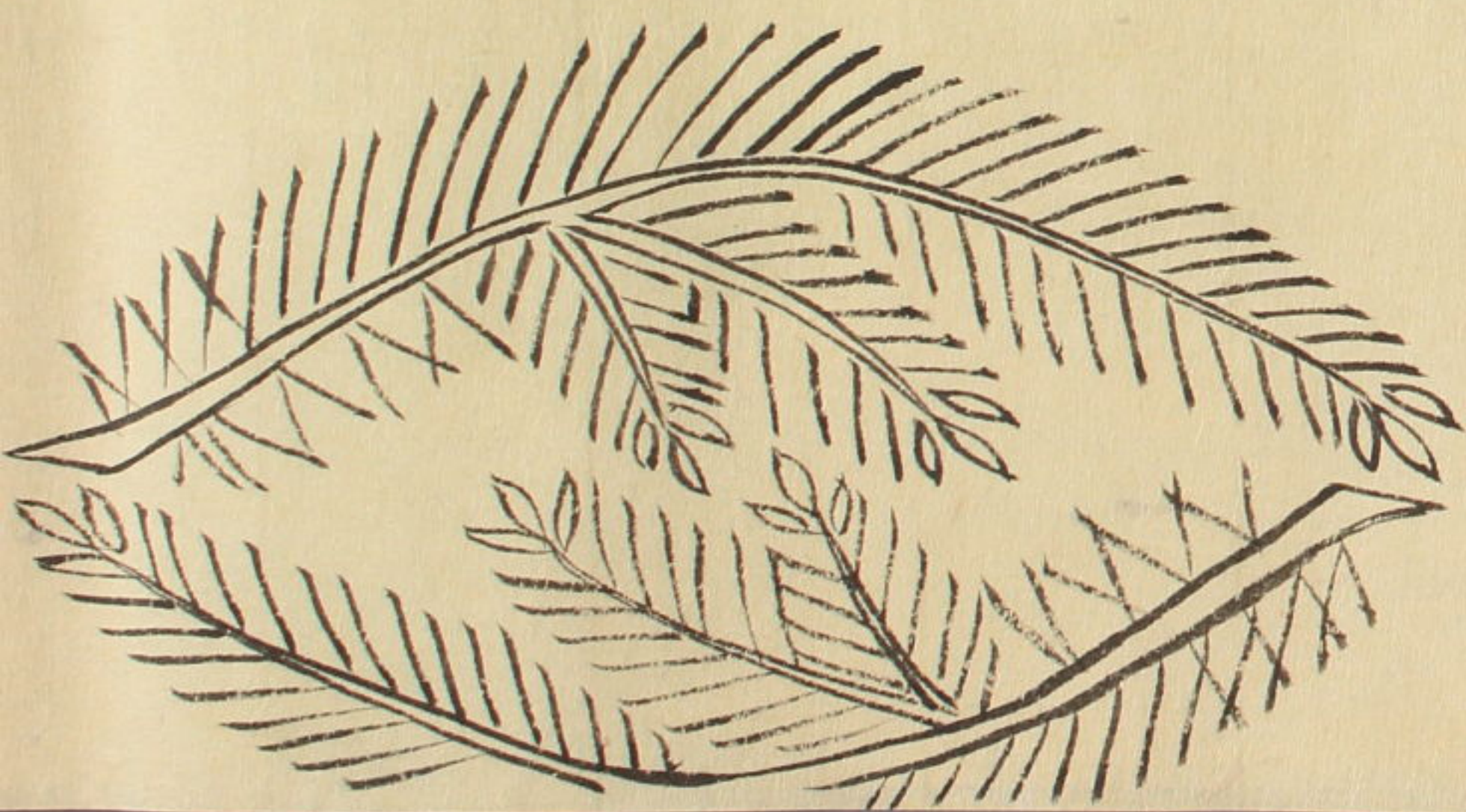
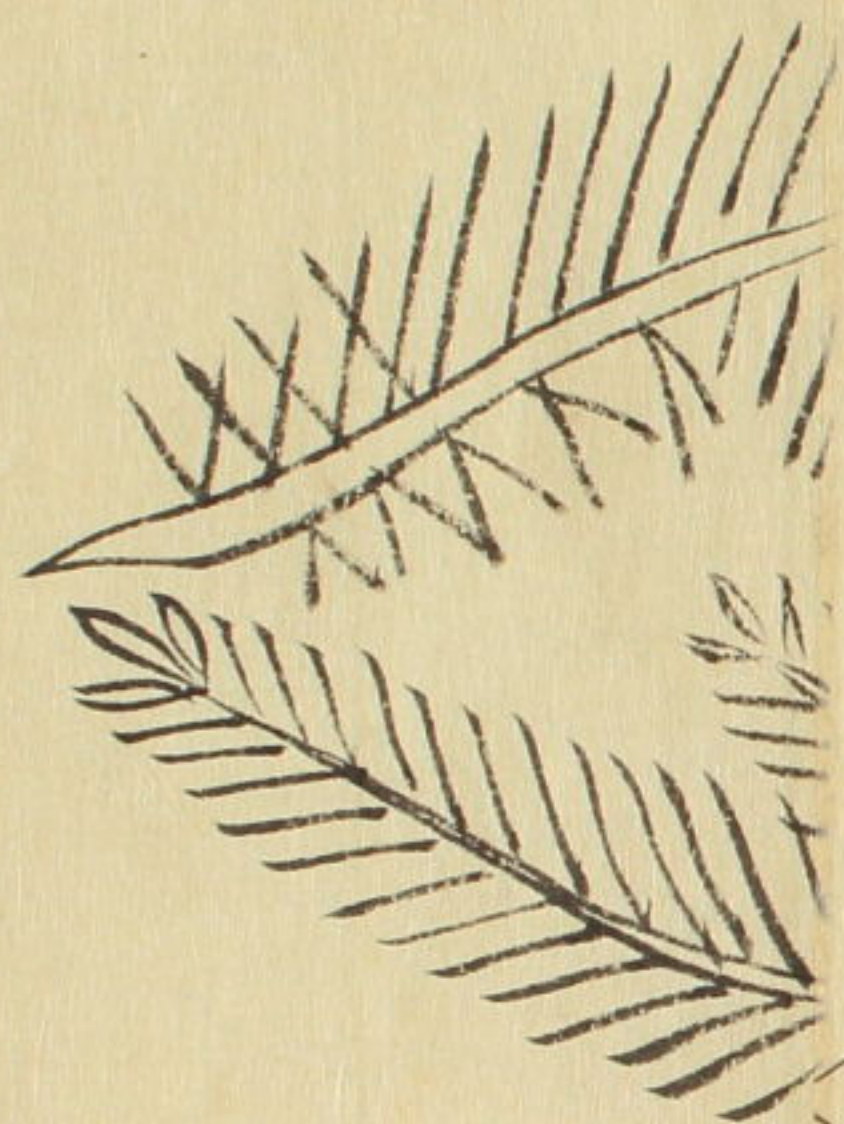
内府公
御袍 冬

御下製 夏

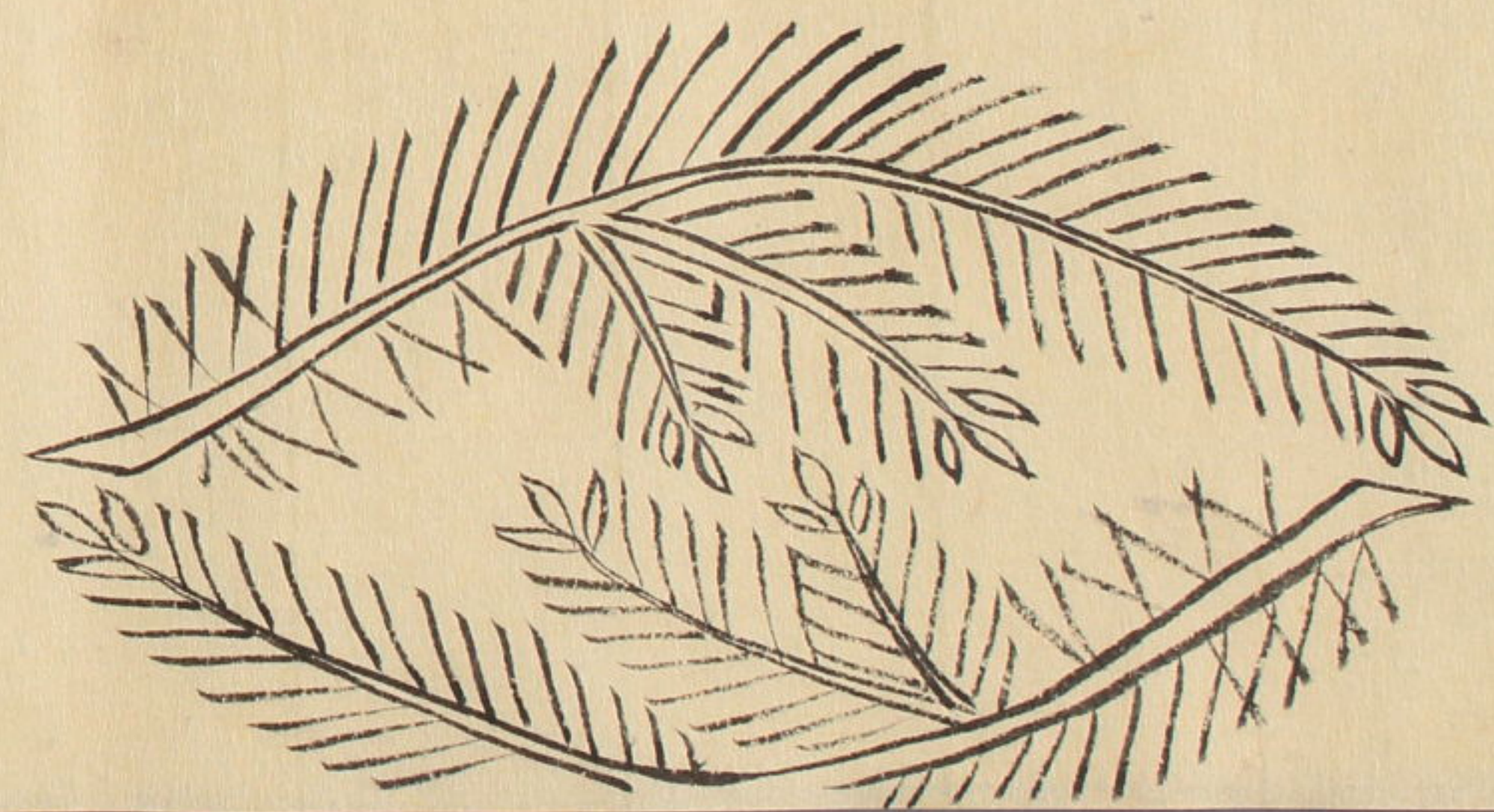
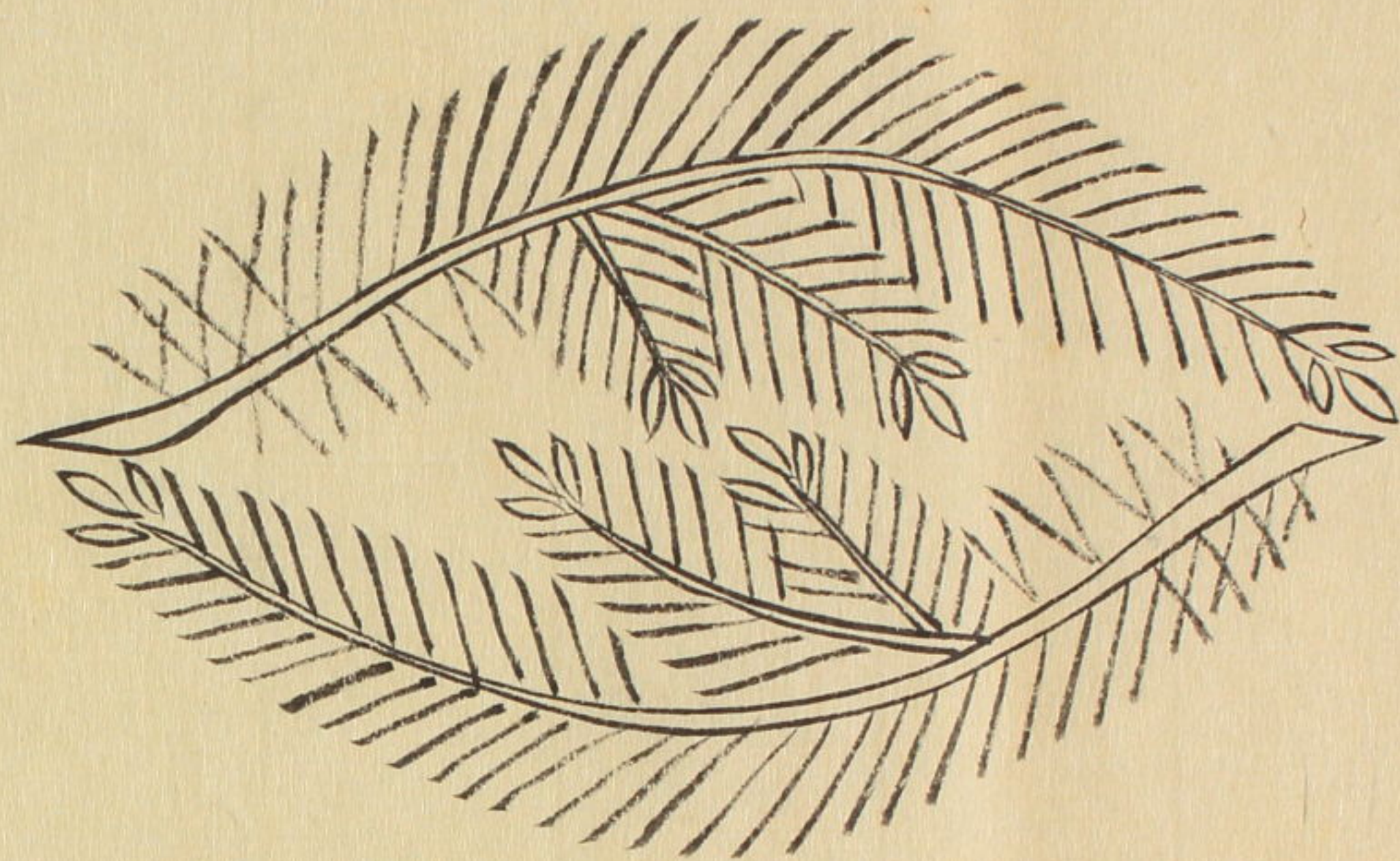
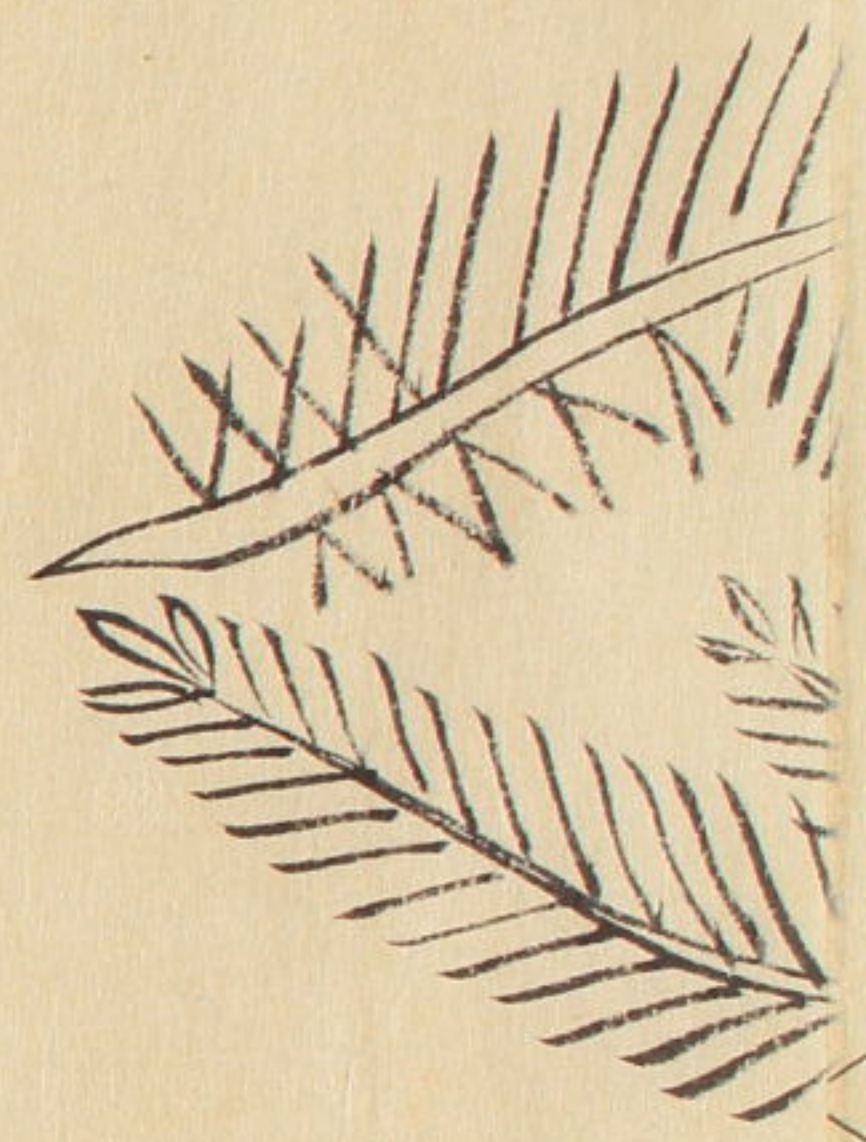


御下製 夏

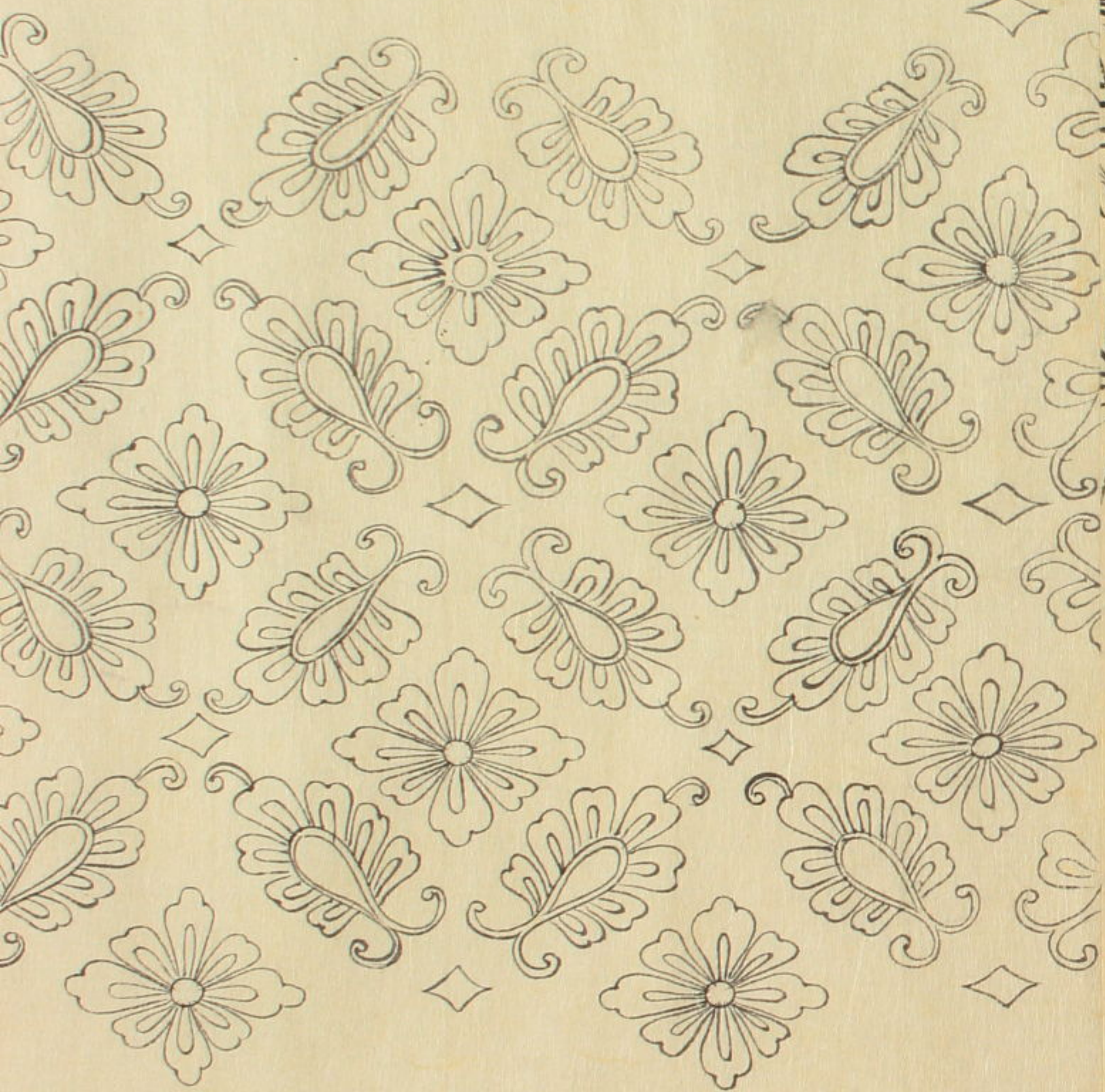
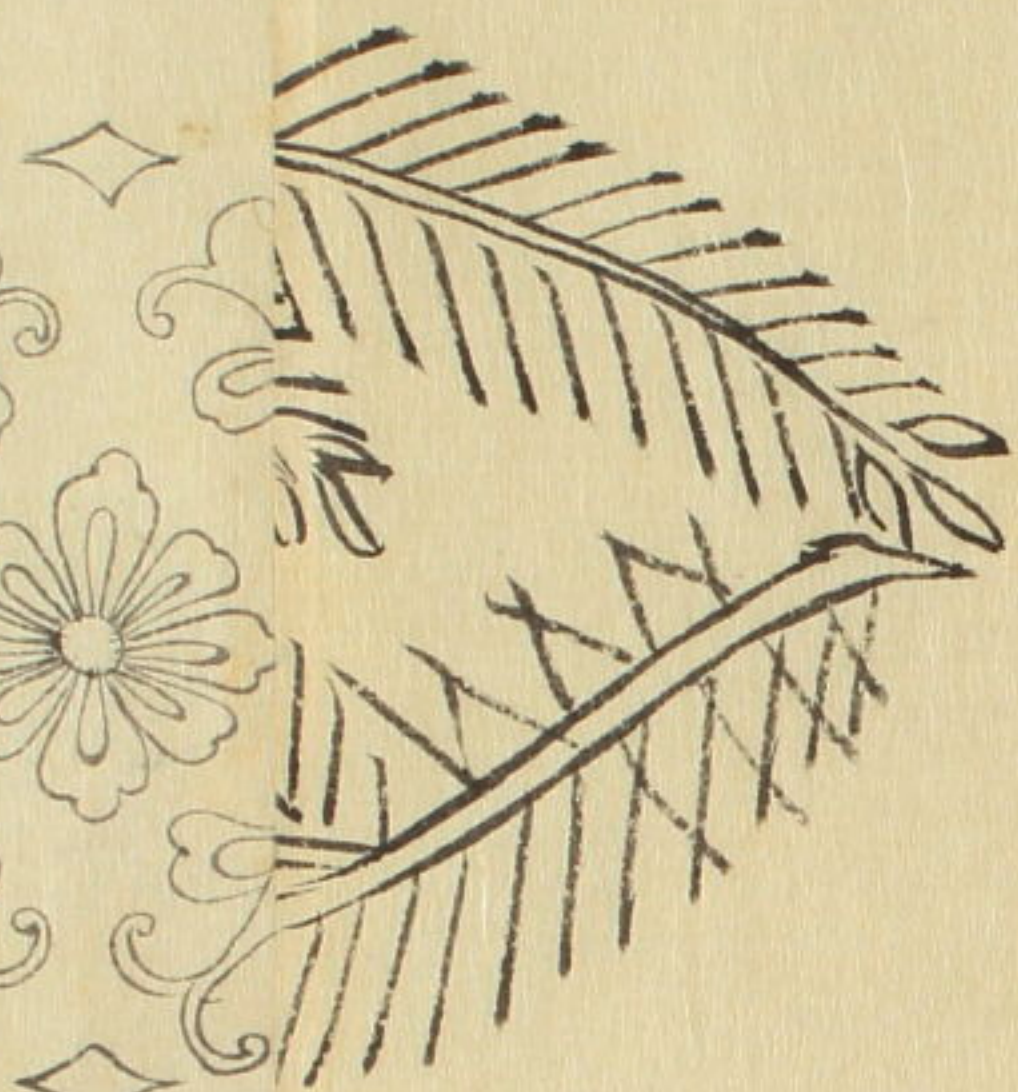
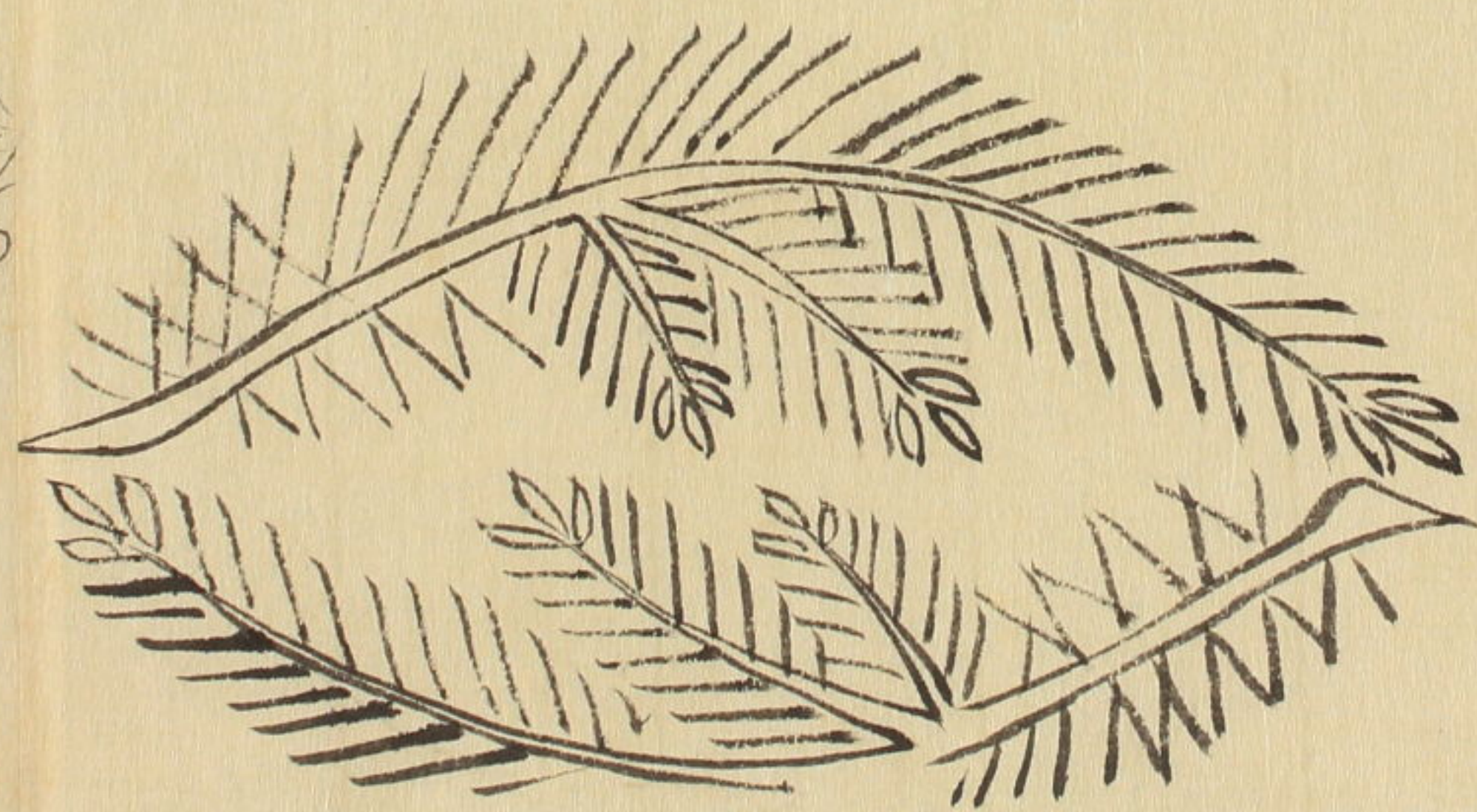
松重
御衣



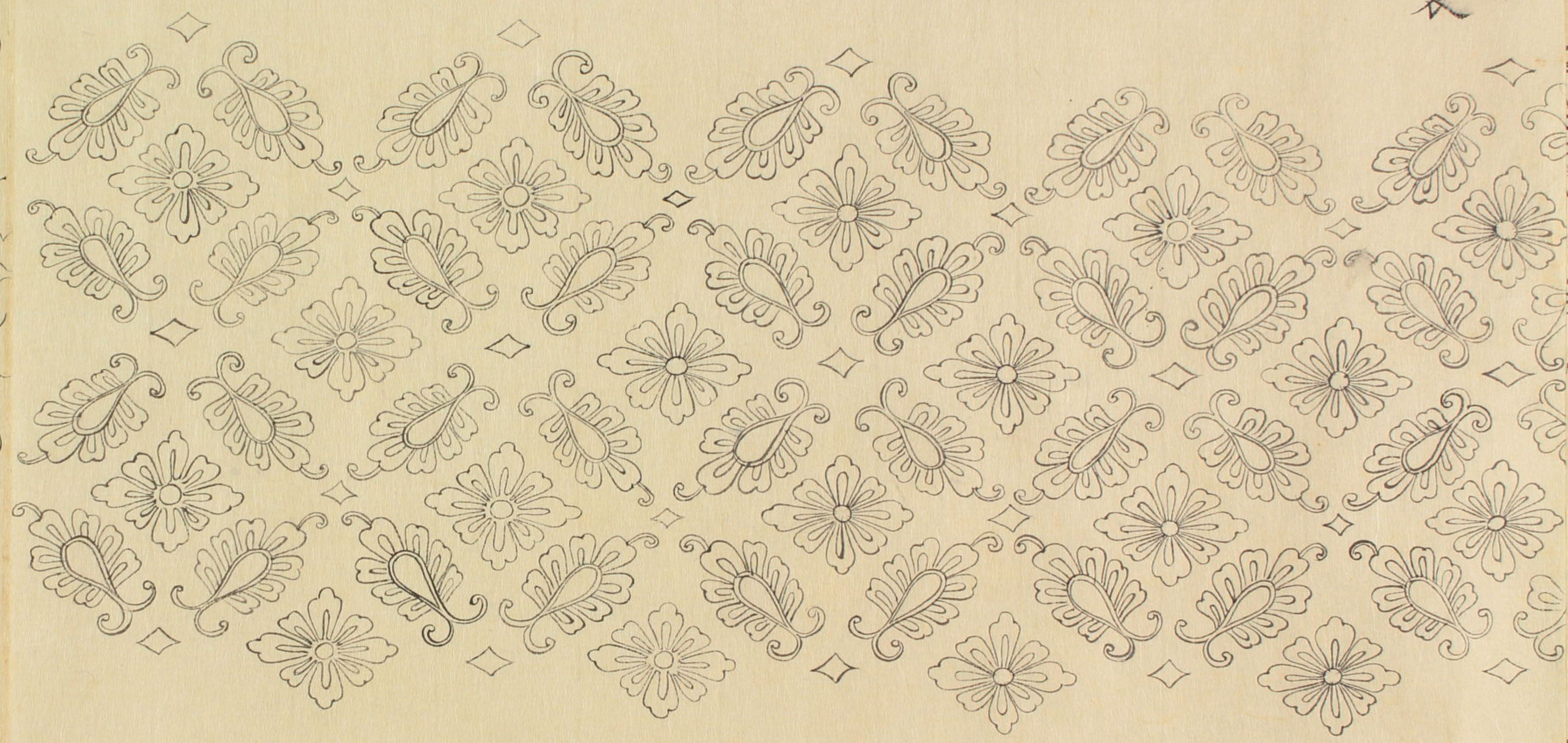
松重
御衣



朽葉
御衣



朽葉
御衣



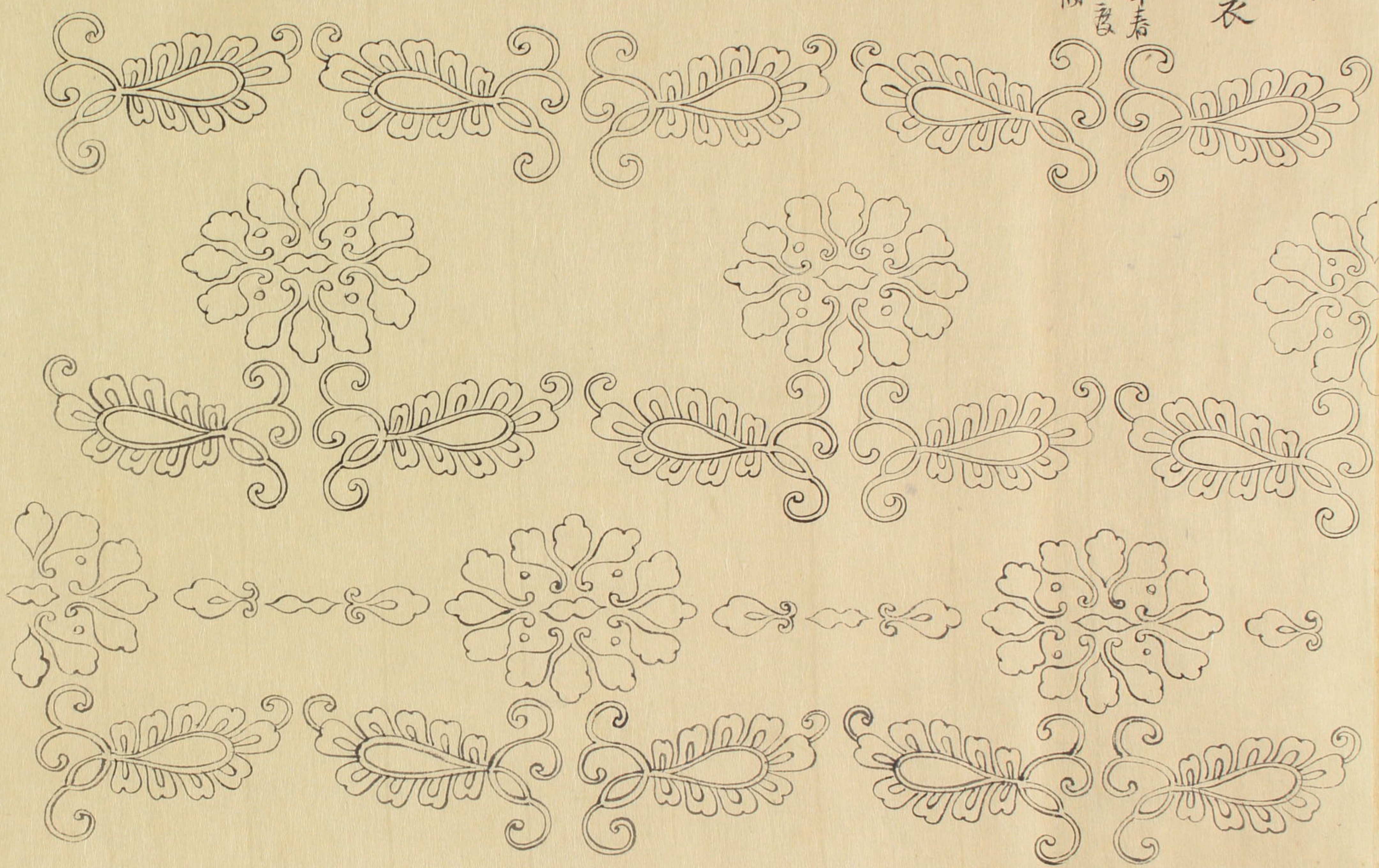
山吹
御衣

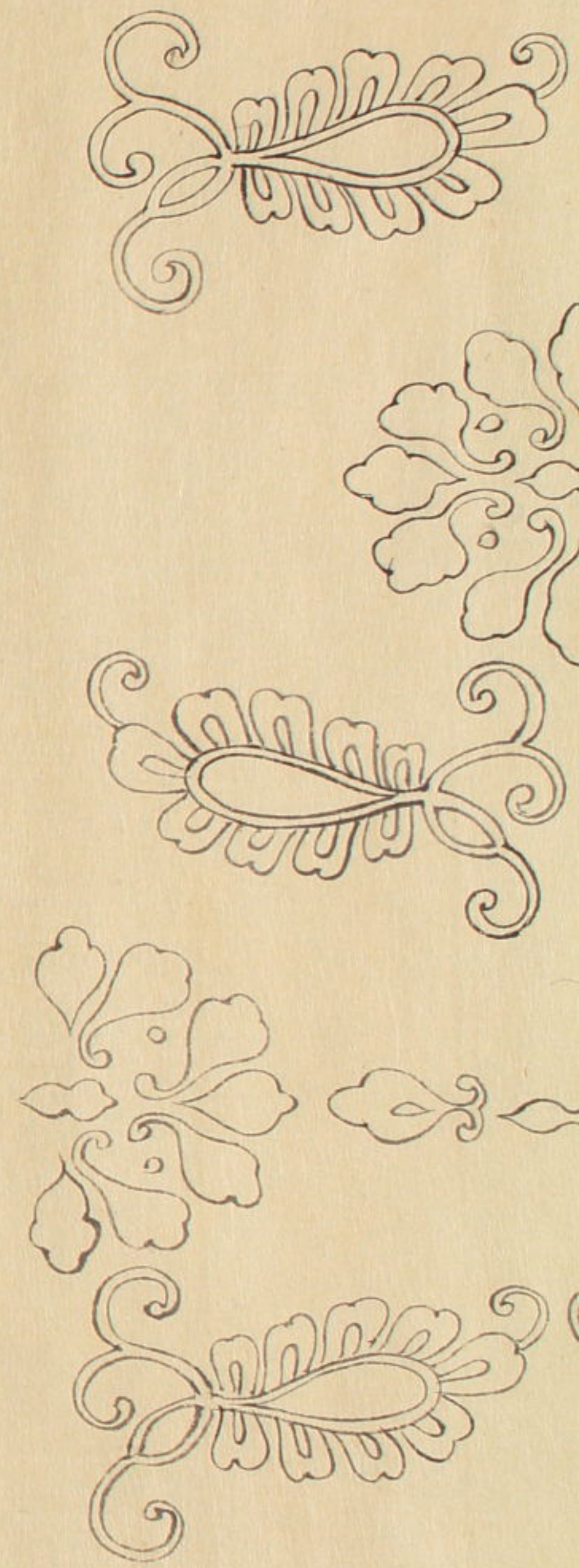
文政七年春
菅菰之良
赤新田



山吹
御衣

文政^六七年春
管絃之衣
所新圖

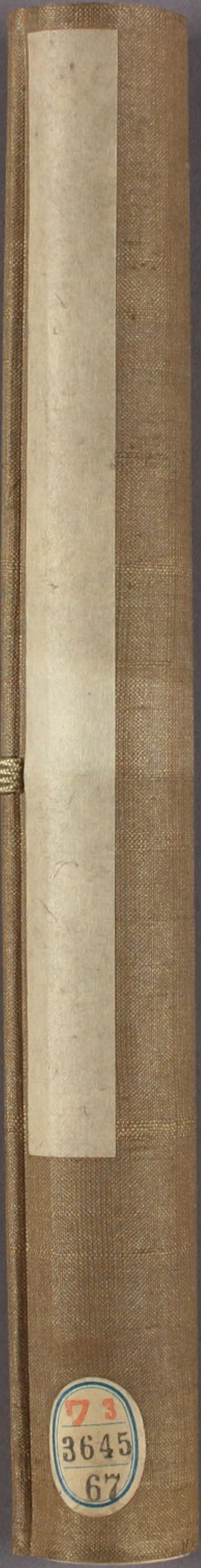




古雖為秘物堅固密之摸字畢

文政七年春

本間添百里



73
3645
67





御官服織文

73
3645
67



本間文庫

本間文庫

73
3645
67



Blank white label on the left side of the book cover.

73
3645
67

太閤文獻