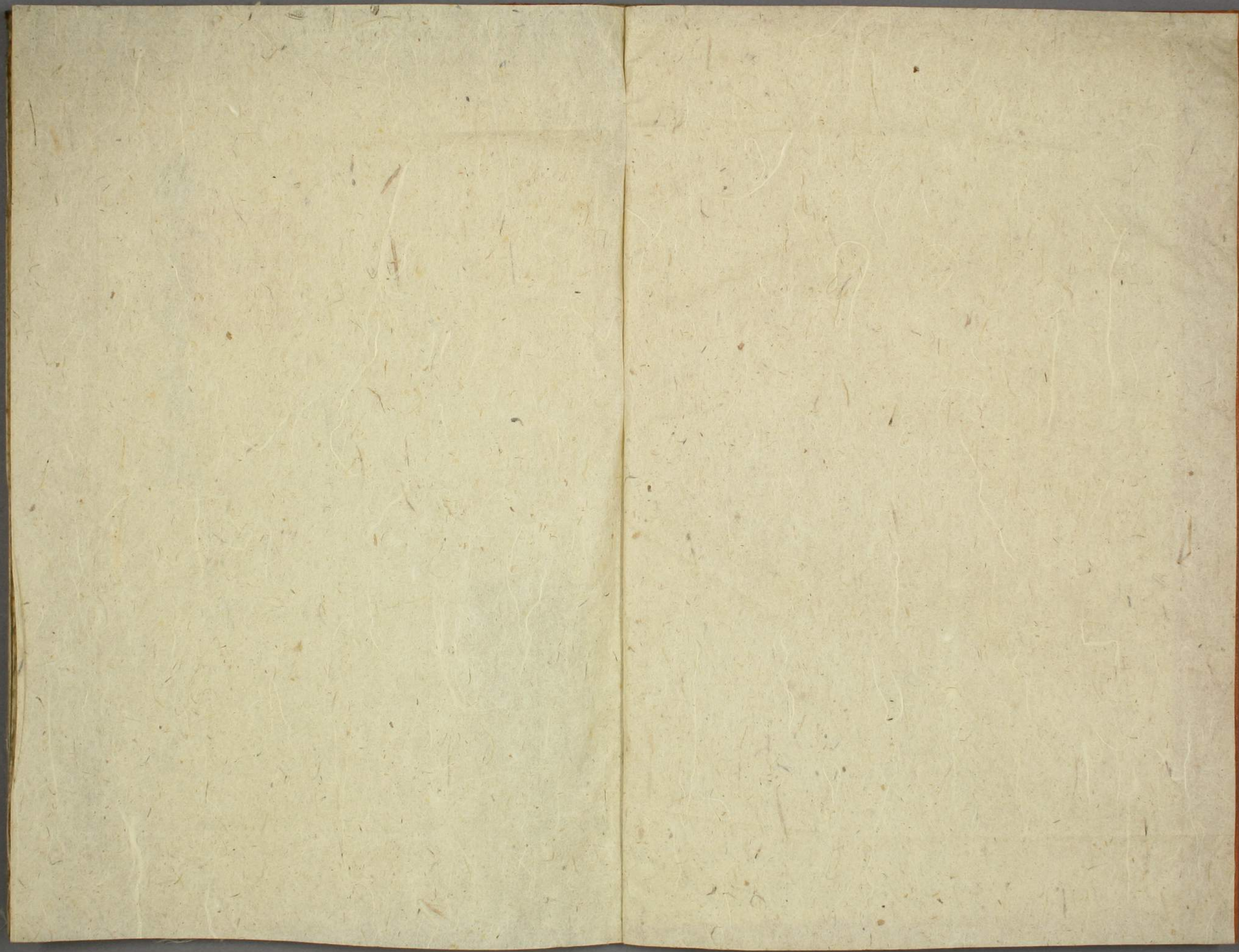


塩釜村金北井記

ル 4  
4390









臨水村金德井記



平為胤上



能井記

平為胤上

歌書九百五十五  
塩谷金村金井記壹冊



門 凡 々  
號 4390  
卷

早稲田 大學 圖書館  
第 31.11.7 號  
藏 書

伊達 達 齋 印

Handwritten text in cursive Japanese (sōsho) style, written vertically from right to left. The text is partially obscured by a red seal at the top right of the page.



Handwritten text in a cursive script, likely a historical document or manuscript. The text is written in a dark ink on aged paper. It consists of approximately 12 lines of text, starting with a large initial character on the left side. The script is highly stylized and difficult to decipher without a key.

Handwritten text in a cursive script, continuing from the previous page. The text is written in a dark ink on aged paper. It consists of approximately 12 lines of text, starting with a large initial character on the left side. The script is highly stylized and difficult to decipher without a key.







此流の代官引地氏典

君ノ下ニテ  
ノ  
ノ  
ノ  
君ノ下ニテ  
ノ  
君ノ下ニテ  
ノ  
君ノ下ニテ  
ノ

君ノ下ニテ  
ノ  
君ノ下ニテ  
ノ  
君ノ下ニテ  
ノ  
君ノ下ニテ  
ノ  
君ノ下ニテ  
ノ  
君ノ下ニテ  
ノ



Handwritten text in a cursive script, likely a historical document or manuscript. The text is written in a dark ink on aged, yellowish paper. The script is dense and continuous across the page, with some variations in line thickness and spacing. The text appears to be a single paragraph or a series of related entries. The handwriting is characteristic of a historical cursive style, possibly from the 17th or 18th century. The text is written in a language that is not immediately recognizable as a modern European language, but the structure and flow suggest a formal or official document. The ink is dark and the paper shows signs of age, including some staining and discoloration. The text is written in a consistent hand throughout the page, with some minor variations in the way certain letters are formed. The overall appearance is that of a well-preserved historical manuscript.



Handwritten text in a cursive script, likely a historical document or manuscript, spanning two pages. The text is written in a dark ink on aged, yellowish paper. The script is highly stylized and appears to be a form of shorthand or a specific dialect. The text is arranged in approximately 12 horizontal lines across the pages. The right page contains a date: 1711年11月13日 (November 13, 1711). The text is written in a cursive script, likely a form of shorthand or a specific dialect. The text is arranged in approximately 12 horizontal lines across the pages. The right page contains a date: 1711年11月13日 (November 13, 1711).



Handwritten text in a cursive script, likely a historical document or manuscript. The text is written in a dark ink on aged, yellowish paper. It consists of several lines of text, with some words appearing to be in a different script or language, possibly Latin or a related European language, interspersed with characters that look like Chinese or Japanese. The handwriting is fluid and characteristic of the 17th or 18th century. The text is arranged in a single column on each page, with some lines starting with a large initial letter or character. The overall appearance is that of a well-preserved historical document.



Handwritten text in cursive script, likely a signature or a note, located in the upper right quadrant of the page.

永六の三月

平島上

Small handwritten mark or signature in the bottom left corner of the page.







