



甲子  
箱  
江  
戶  
之  
巻

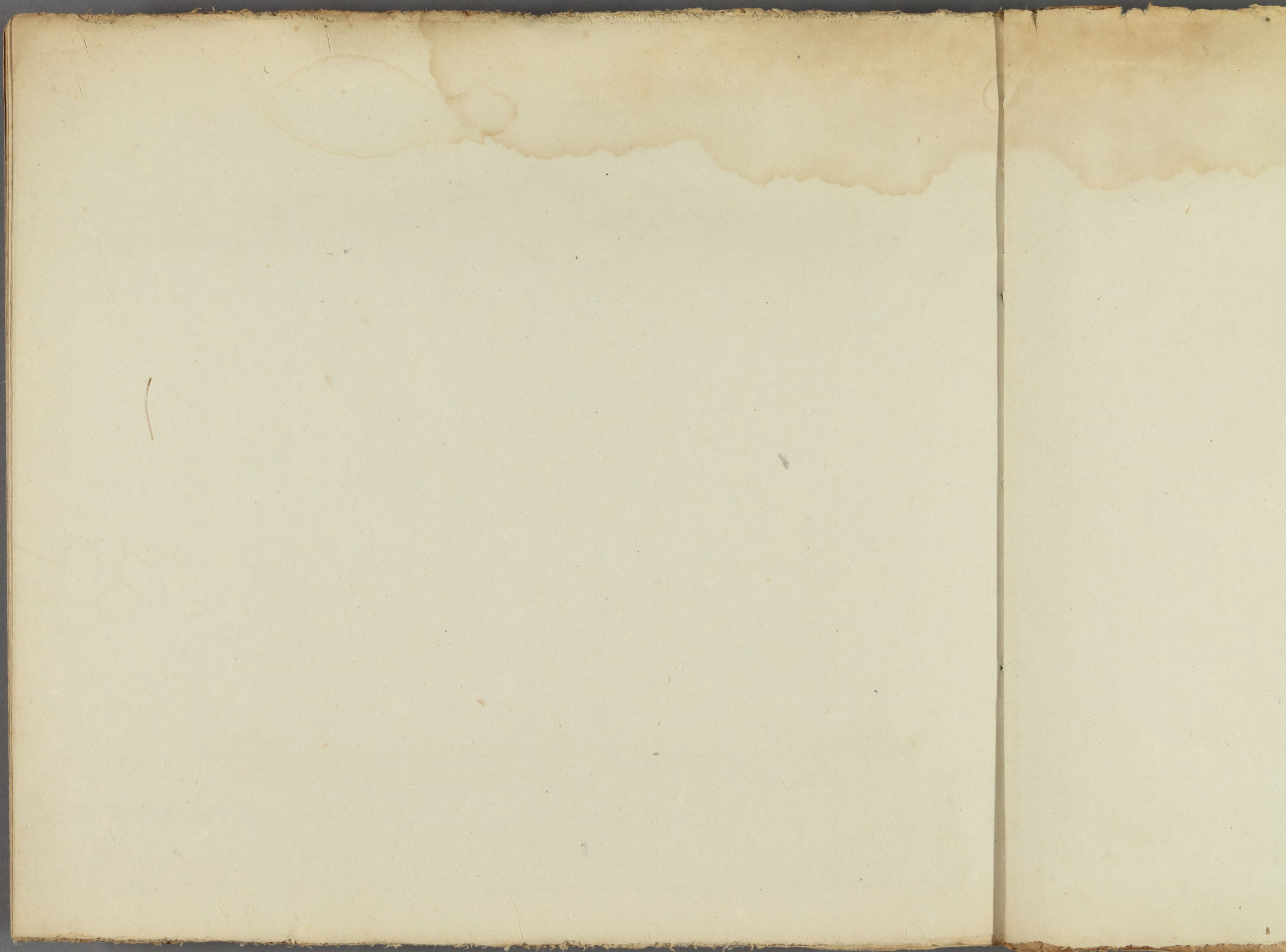
特別  
又 6  
9338





76  
9338









明  
三十五年

Handwritten text in cursive script, likely a list or record, written vertically on the left page.







明治三十五年

Handwritten Japanese text in cursive style (sōsho), consisting of approximately 15 vertical columns of characters.





Handwritten text in Arabic script, likely a continuation from the previous page. The text is written in a cursive style and is partially obscured by the binding edge of the book.

Handwritten text in Arabic script, likely a continuation from the previous page. The text is written in a cursive style and is partially obscured by the binding edge of the book.



بسم الله الرحمن الرحيم  
الحمد لله رب العالمين  
والصلاة والسلام على  
سيدنا محمد وآله الطيبين  
الطاهرين  
الذين هم خاتم النبيين  
مؤتمرون بهم ولو كفر  
بهم الجاهلون

الحمد لله الذي جعل في  
القرآن الكريم آيات  
التي هي حجة على  
الذين كفروا  
والذين كفروا  
فإنهم سوف  
يعذبون  
والذين آمنوا  
والذين عملوا  
الحسنة  
فإنهم سوف  
يؤتون أجرهم  
بغير حساب  
والذين آمنوا  
والذين عملوا  
الحسنة  
فإنهم سوف  
يؤتون أجرهم  
بغير حساب  
والذين آمنوا  
والذين عملوا  
الحسنة  
فإنهم سوف  
يؤتون أجرهم  
بغير حساب

الحمد لله الذي جعل في  
القرآن الكريم آيات  
التي هي حجة على  
الذين كفروا  
والذين كفروا  
فإنهم سوف  
يعذبون  
والذين آمنوا  
والذين عملوا  
الحسنة  
فإنهم سوف  
يؤتون أجرهم  
بغير حساب



Handwritten text in cursive script, likely a list or account, written on a narrow strip of paper pasted onto the left page.

Handwritten text in cursive script, likely a list or account, written on a narrow strip of paper pasted onto the left page.

Handwritten text in cursive script, likely a list or account, written on a narrow strip of paper pasted onto the right page.



Handwritten text in cursive style, likely a list or record of names and locations, written vertically on the right page.

Handwritten text in cursive style, likely a list or record of names and locations, written vertically on the left page.

三平 深之部 石 山崎  
日 藤 日 田村 新 石  
日 藤 日 田村 新 石  
日 藤 日 田村 新 石

又 藤 日 田村 新 石  
日 藤 日 田村 新 石  
日 藤 日 田村 新 石

日 藤 日 田村 新 石  
日 藤 日 田村 新 石  
日 藤 日 田村 新 石

日 藤 日 田村 新 石  
日 藤 日 田村 新 石  
日 藤 日 田村 新 石

日 藤 日 田村 新 石  
日 藤 日 田村 新 石  
日 藤 日 田村 新 石



Handwritten text in Arabic script, including a red circular seal with Arabic calligraphy.

Handwritten text in Arabic script, including a large decorative calligraphic element with red dots.

Handwritten text in Arabic script, continuing the text from the previous page.







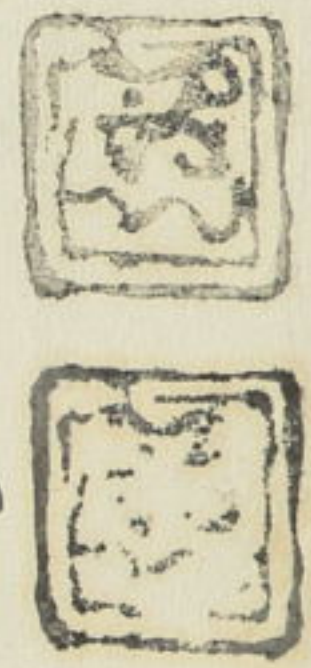








Handwritten text in vertical columns, likely a list or index, with some red ink markings.



Main body of handwritten text in vertical columns, appearing to be a detailed list or record.







Handwritten text in Arabic script, likely a religious or philosophical treatise. The text is densely packed and covers most of the page. It begins with a large initial letter 'ب' (Ba) and continues with several lines of text. The script is cursive and characteristic of the Maghrebi or Andalusian style. There are some larger, more decorative letters interspersed throughout the text.

Handwritten text in Arabic script, located in the left margin of the page. It consists of several lines of text, including a large initial letter 'ب' (Ba) and a smaller initial 'ب' (Ba) further down. The text appears to be a continuation or a separate section related to the main text on the page.



Handwritten text in Arabic script, likely a continuation from the reverse side of the page. The text is dense and covers most of the page area.

Handwritten text in Arabic script, appearing as a separate section or entry.

Handwritten text in Arabic script, possibly a title or a specific heading.

Handwritten text in Arabic script, continuing the narrative or list.

Handwritten text in Arabic script, the main body of text on the left page.



Handwritten text in Arabic script, likely a continuation from the previous page. The text is dense and covers the entire width of the page.

Handwritten text in Arabic script, starting with a large initial letter.



Handwritten text in Arabic script, continuing the technical description.

Handwritten text in Arabic script, continuing the technical description.

Handwritten text in Arabic script, continuing the technical description.

Handwritten text in Arabic script, continuing the technical description.

Handwritten text in Arabic script, continuing the technical description.

Handwritten text in Arabic script, continuing the technical description.

Handwritten text in Arabic script, continuing the technical description.

Handwritten text in Arabic script, continuing the technical description.

Handwritten text in Arabic script, continuing the technical description.

Handwritten text in Arabic script, continuing the technical description.

Handwritten text in Arabic script, continuing the technical description.

Handwritten text in Arabic script, continuing the technical description.

Handwritten text in Arabic script, continuing the technical description.

Handwritten text in Arabic script, continuing the technical description.

Handwritten text in Arabic script, continuing the technical description.

Handwritten text in Arabic script, continuing the technical description.

Handwritten text in Arabic script, continuing the technical description.

Handwritten text in Arabic script, continuing the technical description.

Handwritten text in Arabic script, continuing the technical description.

Handwritten text in Arabic script, continuing the technical description.

Handwritten text in Arabic script, continuing the technical description.

Handwritten text in Arabic script, continuing the technical description.

Handwritten text in Arabic script, continuing the technical description.

Handwritten text in Arabic script, continuing the technical description.



Handwritten text in Arabic script, including several circular diagrams or stamps. The text is arranged in vertical columns, with some circular elements interspersed. The diagrams appear to be technical or scientific in nature, possibly related to astronomy or mathematics.

Main body of handwritten text in Arabic script, organized into several vertical columns. The script is dense and appears to be a technical or scientific treatise. There are several circular diagrams or stamps interspersed within the text, similar to those on the right page. The text is written in a cursive style characteristic of historical Arabic manuscripts.



Handwritten text in a cursive script, likely a list or account, with several lines of entries.

Handwritten text, possibly a date or a specific entry, located below the first block.

Handwritten text, possibly a title or a section header, located below the second block.

A large block of handwritten text in a cursive script, occupying the middle section of the page.

Handwritten text in a cursive script, located at the bottom of the page.



Handwritten text in Arabic script, likely a manuscript or letter. The text is arranged in several lines, with some lines starting with a large initial letter. The script is dense and cursive, characteristic of classical Arabic calligraphy. The text appears to be a formal document or a significant letter, given the use of large initials and the structured layout. The ink is dark, and the paper shows signs of age and wear.

Handwritten text in Arabic script, continuing from the previous page. The text is arranged in several lines, with some lines starting with a large initial letter. The script is dense and cursive, characteristic of classical Arabic calligraphy. The ink is dark, and the paper shows signs of age and wear.



Handwritten text in Arabic script, likely a continuation from the previous page. The text is dense and covers most of the page.

Handwritten text in Arabic script, consisting of several lines of dense cursive. The text appears to be a detailed account or a list of items, possibly related to a historical or administrative document.

Handwritten text in Arabic script, appearing as a separate section or a note at the bottom of the page. It is shorter than the main body of text.



Handwritten text in vertical columns, likely a list or index, written in a cursive script.

Main body of handwritten text in vertical columns, continuing the list or index.

Handwritten text, possibly a title or section header, located below the main body.

Handwritten text, possibly a title or section header, located below the main body.

Handwritten text in vertical columns, located at the bottom of the page.



Small handwritten text or characters located to the left of the red seal.



Handwritten text in a cursive script, likely a form of Arabic or Persian calligraphy, covering the majority of the page. The text is densely packed and flows across the page in a single direction.

Handwritten text in a cursive script, located in the left margin of the page. It includes a small illustration of a plant or branch.





Handwritten text in vertical columns, likely a list or index. The script is a cursive style, possibly from the 17th or 18th century. The text is organized into several columns, with some entries appearing to be numbered or grouped. The characters are dense and difficult to decipher without specialized knowledge of the script.

Handwritten text in vertical columns, continuing the list or index. The script is consistent with the previous section.

Handwritten text in vertical columns, continuing the list or index.

Handwritten text in vertical columns, continuing the list or index.

Handwritten text in vertical columns, continuing the list or index. This section includes a small illustration of a plant or tree branch on the right side.

Handwritten text in vertical columns on the right page, continuing the list or index. The script is consistent with the left page.







Handwritten text in vertical columns, likely a list or index, written in a cursive script.

三 子 記 三 子 記

Handwritten text in vertical columns, continuing the list or index.



Handwritten text in vertical columns, continuing the list or index, with some characters appearing to be in a different script or dialect.



Handwritten text in a cursive script, likely a historical document or manuscript. The text is arranged in approximately 25 horizontal lines. A prominent circled character is visible in the middle of the page.

Handwritten text in a cursive script, likely a historical document or manuscript. The text is arranged in approximately 15 horizontal lines.



Handwritten text in Arabic script, likely a list or index, with some numbers and names. The text is written in a cursive style and is somewhat faded.

Handwritten text in Arabic script, possibly a list or index, with some numbers and names. The text is written in a cursive style and is somewhat faded.

Handwritten text in Arabic script, possibly a list or index, with some numbers and names. The text is written in a cursive style and is somewhat faded.

Handwritten text in Arabic script, possibly a list or index, with some numbers and names. The text is written in a cursive style and is somewhat faded.

Handwritten text in Arabic script, possibly a list or index, with some numbers and names. The text is written in a cursive style and is somewhat faded.



Handwritten text in vertical columns, likely a list or index, written in a cursive script.

Handwritten text in vertical columns, including a prominent red square seal with Chinese characters.













Handwritten text in Arabic script, likely a manuscript or letter. The text is dense and covers most of the page. It appears to be a formal document or a significant piece of correspondence. The script is clear and well-written, typical of historical Arabic manuscripts. The text is arranged in a single column, starting from the right side of the page and moving towards the left. There are some variations in line length and spacing, which is characteristic of handwritten text. The ink is dark and the paper shows signs of age, with some discoloration and wear.

Handwritten text in Arabic script, located on the right page of the manuscript. This section is also dense and appears to be a continuation of the text from the left page. The script is consistent with the rest of the document. The text is arranged in a single column, starting from the right side of the page and moving towards the left. There are some variations in line length and spacing, which is characteristic of handwritten text. The ink is dark and the paper shows signs of age, with some discoloration and wear.



Handwritten text in Arabic script, likely a religious or philosophical treatise, consisting of approximately 15 lines of dense cursive script.

Handwritten text in Arabic script, possibly a section header or a specific phrase.

Handwritten text in Arabic script, possibly a section header or a specific phrase.

Handwritten text in Arabic script, possibly a section header or a specific phrase.

明治三十年

Handwritten text in Arabic script, likely a religious or philosophical treatise, consisting of approximately 15 lines of dense cursive script.

Handwritten text in Arabic script, likely a religious or philosophical treatise, consisting of approximately 15 lines of dense cursive script.

瓶





Handwritten text in Arabic script, likely a continuation from the previous page, describing a process or method.

Handwritten text in Arabic script, possibly a title or introductory note for the section below.

瓶

床



Main body of handwritten text in Arabic script, providing detailed instructions or descriptions related to the illustration above.



Handwritten text in Arabic script, likely a manuscript or letter. The text is dense and covers most of the page. It appears to be a formal document or a significant piece of correspondence. The script is clear and well-written, typical of historical Arabic manuscripts. The text is arranged in approximately 15 horizontal lines, with some variations in line length and spacing. The ink is dark and the paper shows signs of age, including some staining and discoloration.

Handwritten text in Arabic script, located in the bottom right corner of the page. It consists of several lines of text, possibly a signature or a closing remark. The script is consistent with the main body of text on the page. The text is arranged in approximately 5 horizontal lines, with some variations in line length and spacing. The ink is dark and the paper shows signs of age, including some staining and discoloration.



بسم الله الرحمن الرحيم  
الحمد لله رب العالمين  
والصلاة والسلام على  
سيدنا محمد وآله الطيبين  
الطاهرين  
اللهم صل على محمد  
وعلى آل محمد  
اللهم صل على محمد  
وعلى آل محمد  
اللهم صل على محمد  
وعلى آل محمد

بسم الله الرحمن الرحيم  
الحمد لله رب العالمين  
والصلاة والسلام على  
سيدنا محمد وآله الطيبين  
الطاهرين  
اللهم صل على محمد  
وعلى آل محمد  
اللهم صل على محمد  
وعلى آل محمد  
اللهم صل على محمد  
وعلى آل محمد

بسم الله الرحمن الرحيم  
الحمد لله رب العالمين  
والصلاة والسلام على  
سيدنا محمد وآله الطيبين  
الطاهرين  
اللهم صل على محمد  
وعلى آل محمد  
اللهم صل على محمد  
وعلى آل محمد  
اللهم صل على محمد  
وعلى آل محمد



Handwritten text in a cursive script, likely a continuation from the reverse side of the page.

Handwritten text in a cursive script, possibly a signature or a specific section header.

Handwritten text in a cursive script, continuing the narrative or list.

Handwritten text in a cursive script, including a small diagram or list of items.

Handwritten text in a cursive script, featuring several red square seals and a circular seal with a figure.





Handwritten text at the top of the right page, possibly a title or header.

Main body of handwritten text on the right page, consisting of several lines of cursive script.

Main body of handwritten text on the left page, consisting of several lines of cursive script.







بسم الله الرحمن الرحيم  
الحمد لله رب العالمين  
والصلاة والسلام على  
سيدنا محمد وآله الطيبين  
الطاهرين  
الذين هم خاتم النبيين  
مبشرين ونذيرين  
والله اعلم بالصواب

بسم الله الرحمن الرحيم

الحمد لله رب العالمين  
والصلاة والسلام على  
سيدنا محمد وآله الطيبين  
الطاهرين  
الذين هم خاتم النبيين  
مبشرين ونذيرين  
والله اعلم بالصواب

بسم الله الرحمن الرحيم  
الحمد لله رب العالمين  
والصلاة والسلام على  
سيدنا محمد وآله الطيبين  
الطاهرين  
الذين هم خاتم النبيين  
مبشرين ونذيرين  
والله اعلم بالصواب

بسم الله الرحمن الرحيم  
الحمد لله رب العالمين  
والصلاة والسلام على  
سيدنا محمد وآله الطيبين  
الطاهرين  
الذين هم خاتم النبيين  
مبشرين ونذيرين  
والله اعلم بالصواب







Handwritten text in cursive script, likely a list or account, written vertically on the right page.

Handwritten text in cursive script, including the characters '交雄' and '田丸', written vertically on the left page.

Handwritten text in cursive script, continuing the list or account, written vertically on the left page.

Handwritten characters '大' and '中' written vertically on the left page.

Large handwritten characters '三' and '三' written vertically on the left page.















Handwritten text in a cursive script, possibly a title or a section header, located on the right page of the manuscript.

Main body of handwritten text in a cursive script, spanning across the center of the manuscript page. The text is densely packed and appears to be a continuous passage.



Handwritten text in Arabic script, likely a religious or historical document. The text is arranged in approximately 15 horizontal lines, written from right to left. The script is a cursive style, possibly Maghrebi or Ottoman. The text is contained within a rectangular border on the page.

Handwritten text in Arabic script, located on the left page of the manuscript. It consists of several lines of text, written in a cursive style, positioned on the left side of the page.















Handwritten text in Arabic script, partially visible on the left edge of the page.

Handwritten text in Arabic script, located in the upper right quadrant of the page. The text is arranged in several lines and includes some decorative flourishes.

Handwritten text in Arabic script, located in the middle right section of the page. It appears to be a continuation or a separate entry related to the text above.

Handwritten text in Arabic script, located in the lower right section of the page. It includes a large, stylized flourish or signature.



Handwritten text in Arabic script, likely a religious or philosophical treatise. The text is arranged in approximately 12 vertical columns, reading from right to left. The script is a cursive style, possibly Maghrebi or Maghribi. The text is contained within a rectangular border on the page.



Handwritten text in Arabic script, partially obscured by a white strip on the left edge of the page.

Handwritten text in Arabic script, consisting of approximately 12 lines of dense, cursive handwriting.



Handwritten text in Arabic script, likely a religious or philosophical passage, located on the right page of the manuscript.

Handwritten text in Arabic script, located in the upper right section of the left page.

Handwritten text in Arabic script, located in the middle right section of the left page.

Handwritten text in Arabic script, located in the lower right section of the left page.

Handwritten text in Arabic script, located in the middle left section of the left page.

Handwritten text in Arabic script, located in the lower left section of the left page.



Small handwritten text or notes located below the red seal impressions on the left page.



Handwritten text in Arabic script, likely a religious or philosophical treatise. The text is arranged in approximately 12 horizontal lines. The script is a cursive style, possibly Maghrebi or Ottoman. The text is written on a rectangular piece of paper pasted onto the page. The first line begins with a large, decorative initial letter, possibly 'ب' (Ba). The text continues with several lines of dense, flowing script. The final line ends with a small, decorative flourish.

Handwritten text in Arabic script, likely a religious or philosophical treatise. The text is arranged in approximately 12 horizontal lines. The script is a cursive style, possibly Maghrebi or Ottoman. The text is written on a rectangular piece of paper pasted onto the page. The first line begins with a large, decorative initial letter, possibly 'ب' (Ba). The text continues with several lines of dense, flowing script. The final line ends with a small, decorative flourish.



Handwritten text in Arabic script, likely a continuation from the previous page. The text is written in a cursive style and appears to be a religious or philosophical treatise.

Handwritten text in Arabic script, continuing the text from the previous page. The script is dense and cursive, typical of classical Islamic manuscripts. The text discusses various topics, possibly related to the sciences or philosophy.

Handwritten text in Arabic script, possibly a section header or a specific reference. The text is written in a larger, more legible hand compared to the main body of text.







Handwritten text in Arabic script, likely a religious or philosophical treatise. The text is arranged in approximately 15 horizontal lines across the page. The script is a cursive style, possibly Maghrebi or Ottoman, with varying line lengths and some decorative elements. The text is densely packed and covers most of the page's width.

Handwritten text in Arabic script, continuing from the previous page. It consists of about 5 lines of text, also in a cursive style. The text is positioned in the upper half of the page, leaving a significant blank space below it.







Handwritten text in Arabic script, likely a continuation from the previous page. The text is dense and covers most of the page.

Handwritten text in Arabic script, possibly a separate entry or a different section. The text is dense and covers most of the page.



Handwritten text on the left edge of the page, partially cut off.

Main body of handwritten text in a cursive script, consisting of several lines of prose.

Handwritten text on the right edge of the page, partially cut off.



Handwritten text in a cursive script, likely Arabic or Persian, covering the left page of the manuscript. The text is densely packed and appears to be a continuous passage of prose or poetry.

Handwritten text in a cursive script, likely Arabic or Persian, covering the right page of the manuscript. The text is densely packed and appears to be a continuous passage of prose or poetry.



Handwritten text in a cursive script, likely Chinese or Japanese, covering the left page of the manuscript.

Handwritten text in a cursive script, likely Chinese or Japanese, covering the right page of the manuscript.













Handwritten text in Arabic script, likely a continuation from the reverse side of the page. The text is dense and fills most of the page.

Handwritten text in Arabic script, possibly a separate entry or a different section. It is written in a clear, cursive hand and occupies the central portion of the page.

Handwritten text in Arabic script, appearing as a distinct line or signature at the bottom of the page.



Handwritten title in Arabic script, likely a religious or philosophical text.

Handwritten text in Arabic script, possibly a subtitle or author information.

Main body of handwritten text in Arabic script, consisting of several lines of dense calligraphy.

Handwritten text in Arabic script, located on the left side of the page, possibly a continuation or a separate section.







Handwritten text in Arabic script, likely a continuation from the previous page or a separate entry. The text is dense and covers most of the left page.

Handwritten title or section header in Arabic script, possibly indicating a specific chapter or topic.

Main body of handwritten text in Arabic script, containing several lines of prose. It includes several circular symbols or diagrams interspersed within the text, which may represent specific concepts or mathematical elements.

Final section of handwritten text in Arabic script, possibly a conclusion or a separate note related to the main text.



Handwritten text in a cursive script, likely a historical document or manuscript. The text is arranged in approximately 15 horizontal lines across the page. The script is dense and characteristic of historical Chinese or Japanese calligraphy. The paper shows signs of age, including yellowing and some staining. The text appears to be a formal record or a significant piece of correspondence, given the structured nature of the lines and the use of what might be titles or specific terminology. The right side of the page is mostly blank, with a small white rectangular area near the top edge.





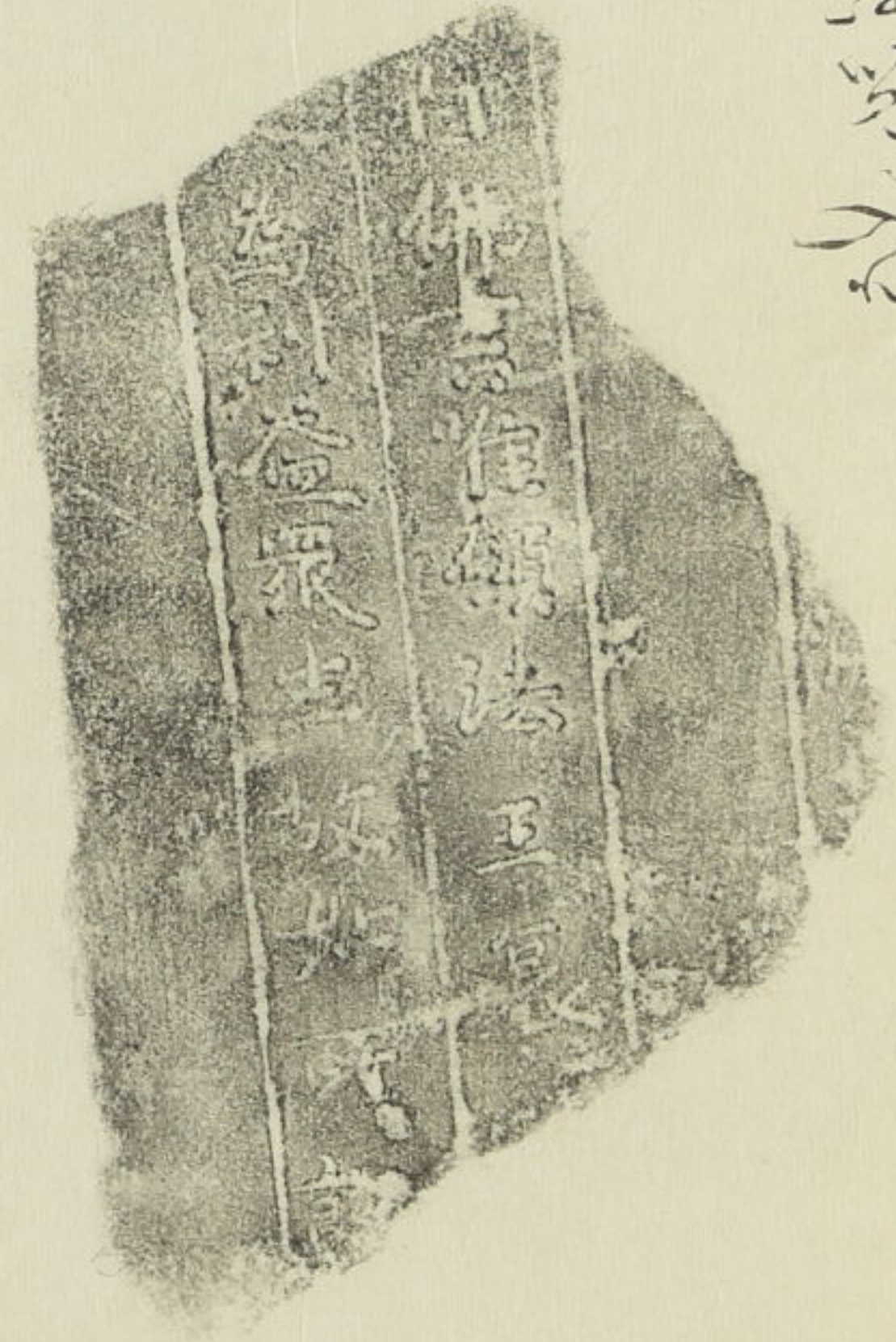






Handwritten text in Arabic script, likely a continuation from the previous page. The text is written in a cursive style and appears to be a list or a series of entries.

Handwritten text in Arabic script, continuing from the previous page. The text is written in a cursive style and appears to be a list or a series of entries. There are some decorative flourishes and a small circular stamp or seal in the middle of the text.



Handwritten text in Arabic script, located at the bottom of the page. It appears to be a signature or a short note.



Handwritten text in a cursive script, likely Persian or Urdu, filling the main body of the page. The text is arranged in approximately 15 horizontal lines, starting from the right side of the page and moving towards the left. The script is dense and characteristic of the 17th or 18th century.

Handwritten text at the bottom of the page, possibly a signature or a date, written in a larger, more stylized hand.

Handwritten text in the right margin, continuing the script from the main body of the page. It appears to be a continuation of the same text or a separate note.



Handwritten text in Arabic script, likely a list or index, written vertically on the left page.

Handwritten text in Arabic script, likely a list or index, written vertically on the right page.

Handwritten text in Arabic script, likely a list or index, written vertically on the right page.

Handwritten text in Arabic script, likely a list or index, written vertically on the right page.

Handwritten text in Arabic script, likely a list or index, written vertically on the right page.







Handwritten text in a cursive script, likely Persian or Urdu, located on the left page of the manuscript.

Handwritten text in a cursive script, likely Persian or Urdu, located on the right page of the manuscript. The text is arranged in several lines, with some characters appearing to be stylized or decorative. The script is dense and fills most of the page.















Handwritten text in Arabic script, likely a continuation from the reverse side of the page. The text is dense and covers most of the page area.

Handwritten text in Arabic script, consisting of several lines of dense cursive. The text appears to be a formal document or a significant portion of a letter.

Handwritten text in Arabic script, appearing as a single line or short paragraph.

Handwritten text in Arabic script, appearing as a single line or short paragraph.



Handwritten text in Arabic script, likely a continuation from the reverse side of the page. The text is densely packed and covers most of the page area.

Handwritten text in Arabic script, likely a continuation from the reverse side of the page. The text is densely packed and covers most of the page area. There is a large, irregular water stain at the top of the page, partially obscuring the text.



何の事にも心を配りて  
先づ心を正すべし

一 心正す

二 行正す

三 言正す

天長節

其の父は...  
幾平父

孝の事...  
親を敬ふ...  
人を敬ふ...  
徳を修む...

先ず此の事の人...  
由緒の事...  
本懐...  
一物...  
徳を修む...



















Handwritten text in a cursive script, likely a historical document or ledger. The text is organized into columns and includes several red square seals (stamps) and a small illustration of a seated figure. The right side of the page is blank.



廿一年	ハツ
廿九年	ハツ
廿八年	ハツ
廿七年	ハツ
廿六年	ハツ
廿五年	ハツ















三才清心經

卷一

明洪三十五年秋多為旱而後京師洪三十七年  
春日游交天大被微臣年功亦在田  
律大正二年河東前臨洪洪十五年  
書翰者始中世金所家自是年  
通三十七年一月臨三十五會通今  
子而之之婚之如若春子田休  
為是海濱小都而獨有以良師  
交語及公竟師麻塞也

古正六年丁巳七月十一日

中法三都





