

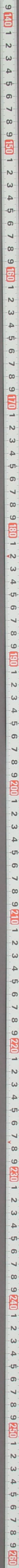


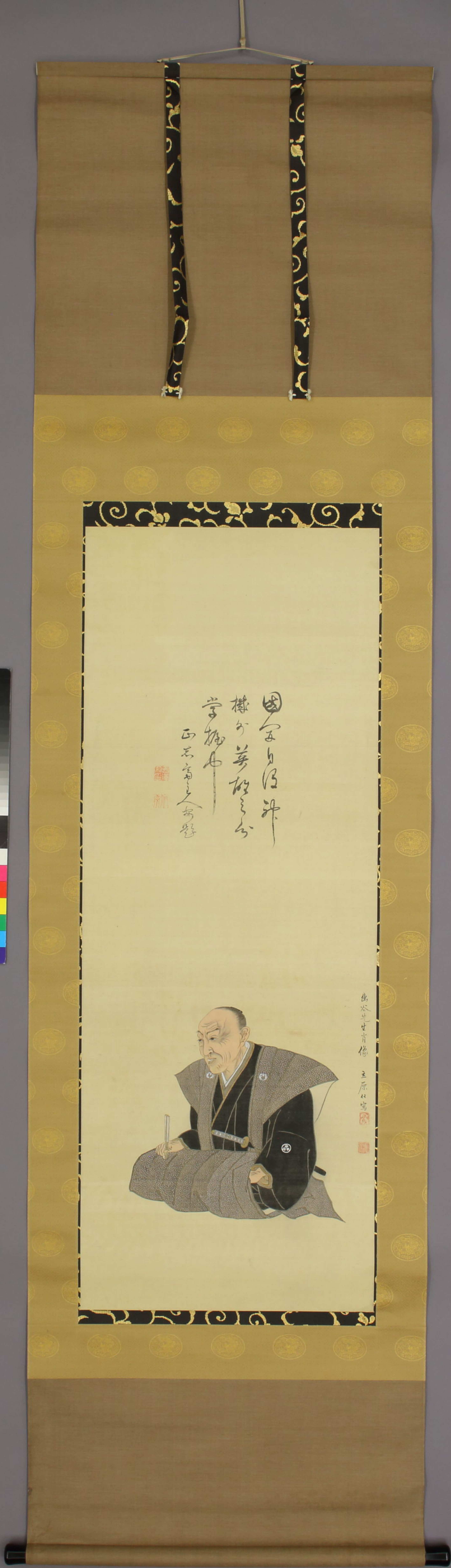
國分五郎兵衛
權外美雄公
字柳也
正名高之丞



幽谷先生肖像

五原仁寫

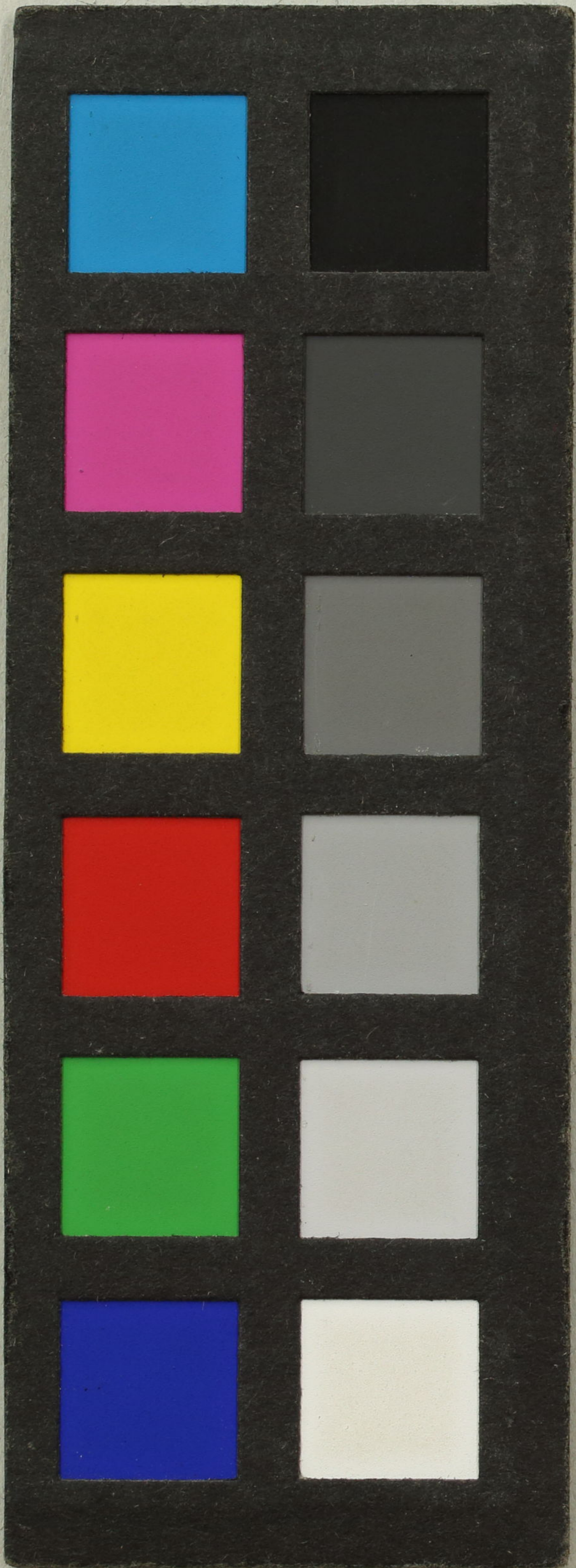




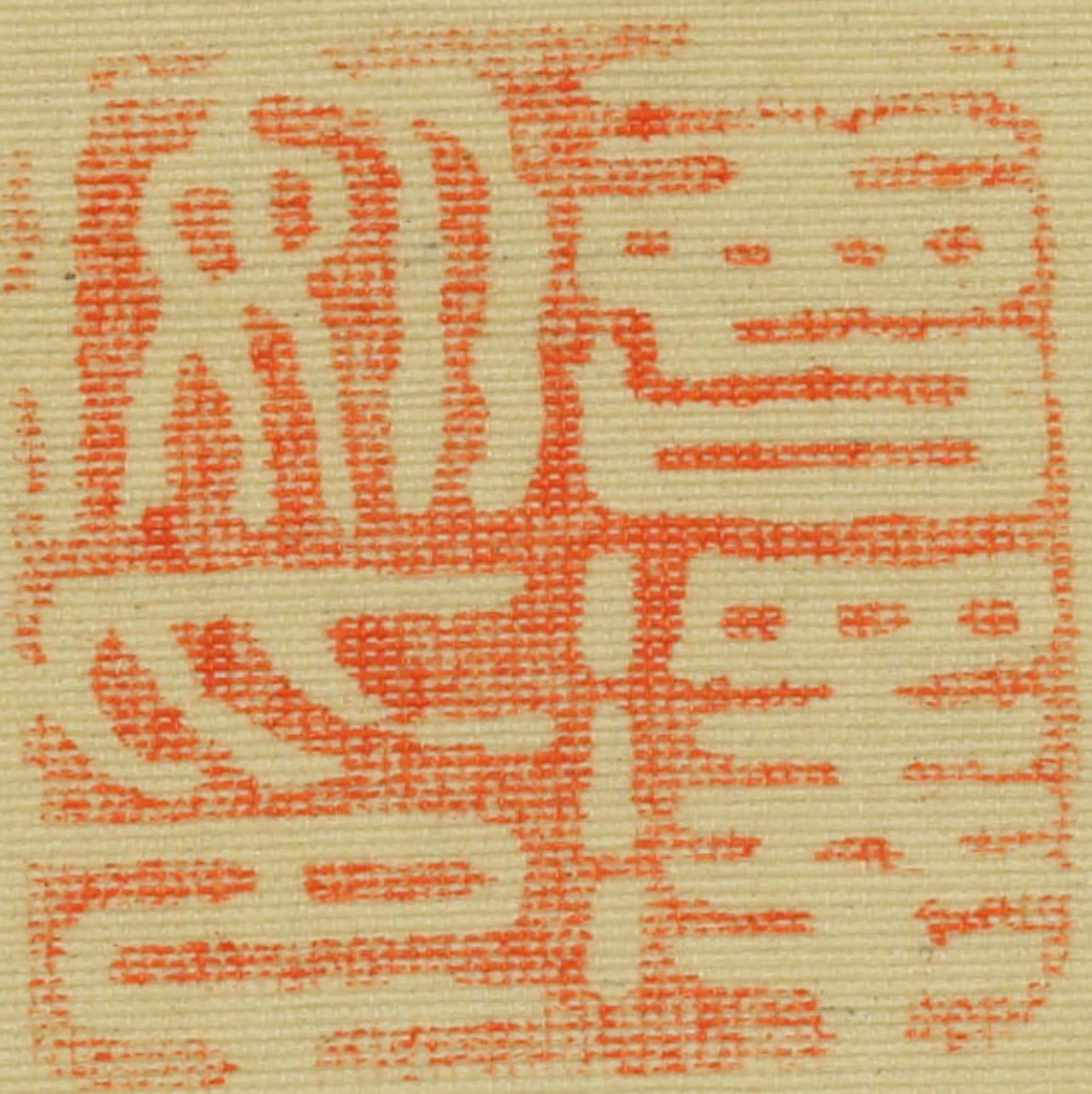
國分守貞公
學柳也
正石翁之書

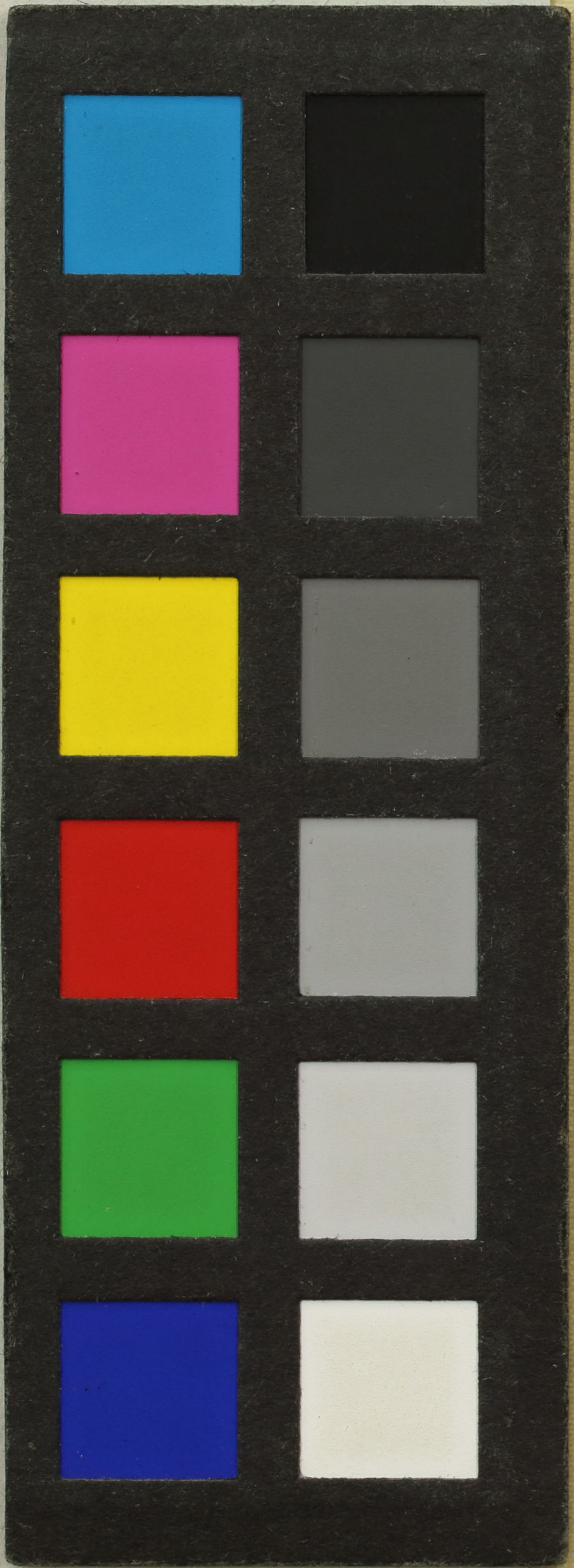
出水先生肖像
三原日守



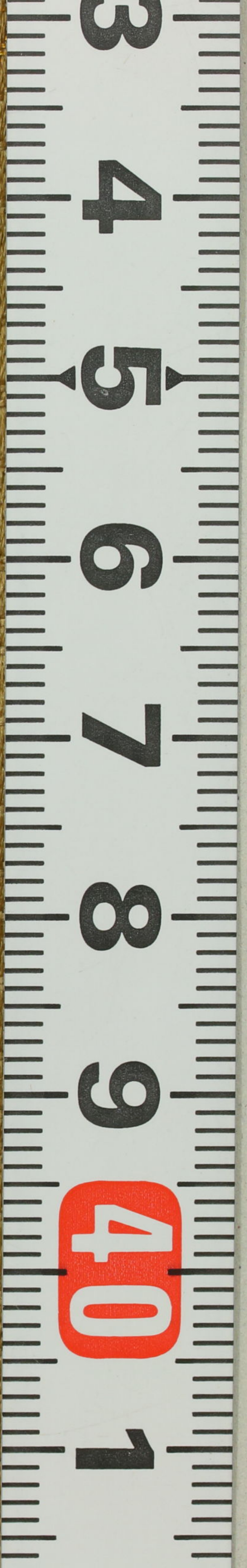
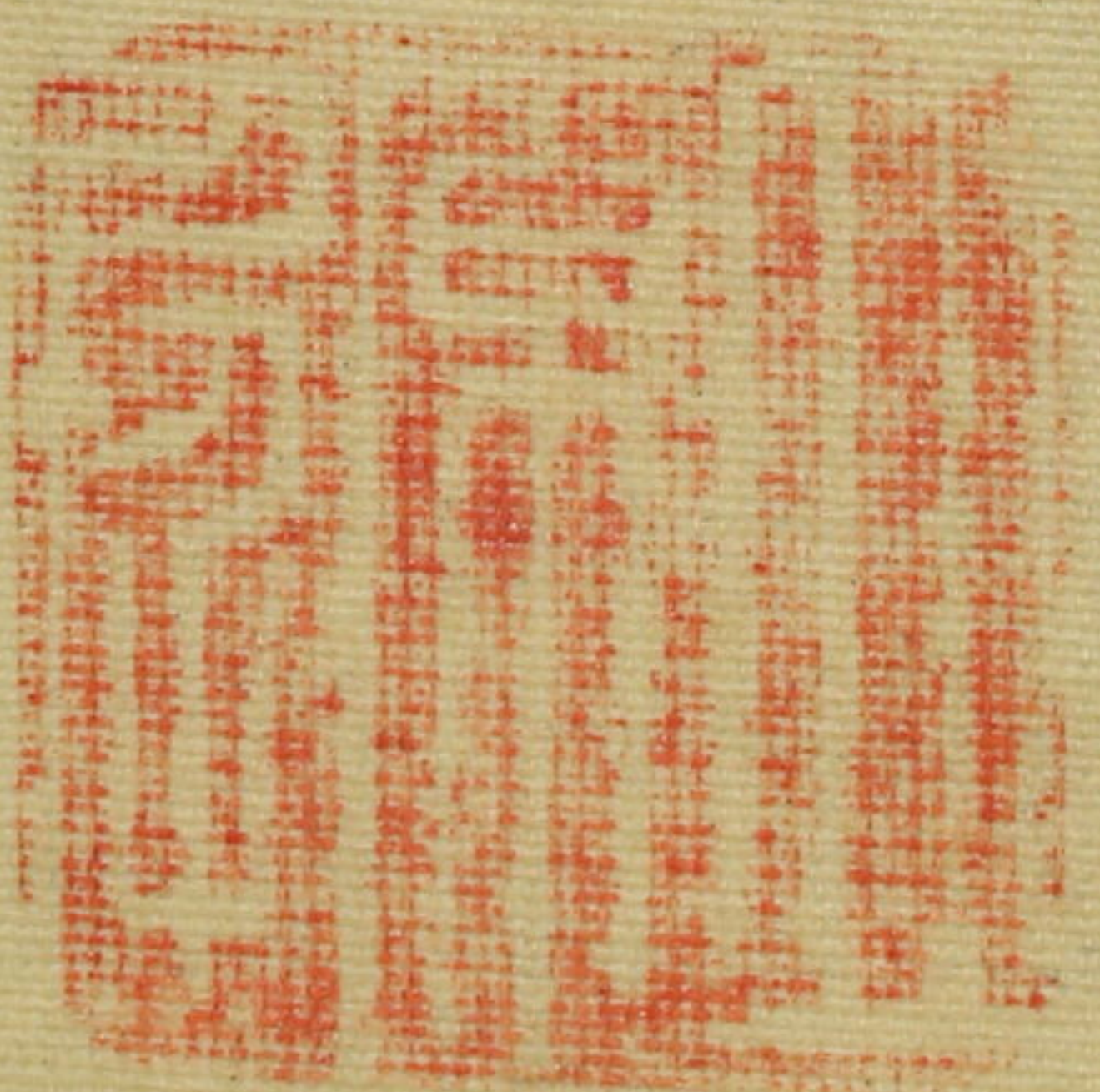


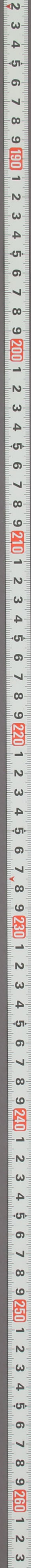
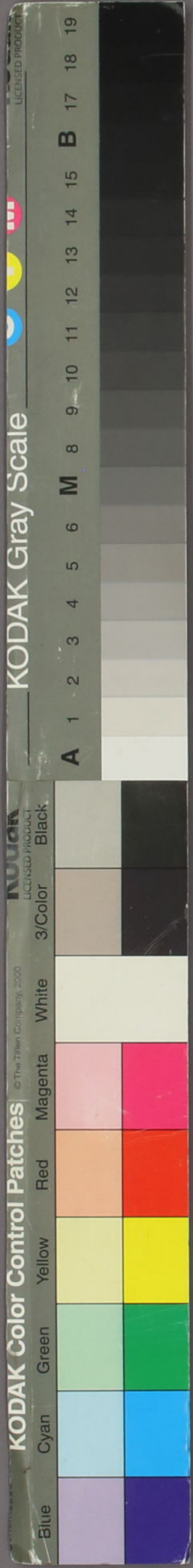
Handwritten Chinese characters in cursive script, likely a signature or calligraphy, positioned vertically on the right side of the page.





印





有田幽谷先生像

三原杏軒書

有田幽谷

5779