

Philippine Islands.

Memo. Concerning Trade at Manila, Cebu and Iloilo.

Every vessel which enters and leaves in Ballast pays  $3\frac{1}{4}$  Cents of a Dollar per Ton Spanish. Every vessel which enters and leaves with Cargo undisturbed, or loads or discharges Cargo, pays  $4\frac{7}{8}$  Cents per Ton Spanish, Every vessel which loads and discharges Cargo, pays  $6\frac{1}{4}$  Cents per Ton Spanish. Tonnage is estimated from Register as follows: British and American 100 Tons equal to 123 Tons Spanish.

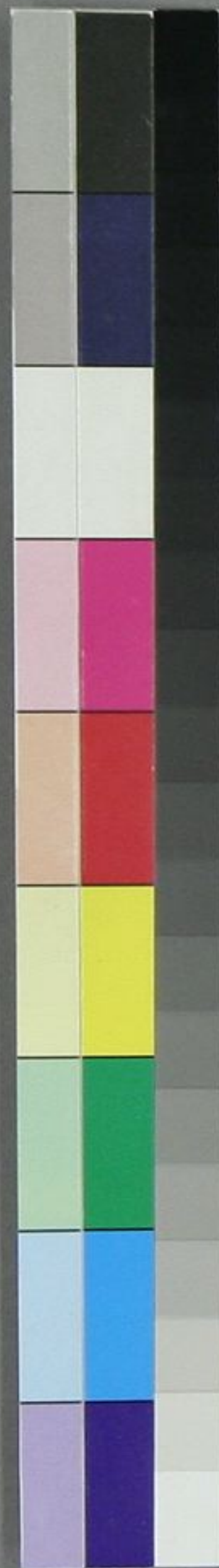
Specie is not considered as Cargo.

Vessels going into the River at Manila are subject to charge of from  $1\frac{1}{8}$  to  $6\frac{1}{4}$  Cents per Ton Spanish.

Export Duty on Sugar 70 Cents p. 100 Kilo<sup>s</sup>. - equal to 9 Cents of a Dollar per Picul. - On Dry Woods 20 Cents per 100 Kilo<sup>s</sup>, equal to 3 Cents of a Dollar per Picul. - The Picul is  $137\frac{1}{2}$  lb. English Spanish, or 140 lb. English. The Aruntal, 100 " Spanish is nearly 102 lb. English. - The Caban, measure of Rice, weighs about 123 lb. and of Paddy about 85 lb. - 16 Manila Piculs are equal to 1 Ton English.

Manifests of Inward Cargo must be delivered to Customs Officers on their arrival on board under a penalty of \$200. and must have the Certificate of the Spanish Consul (or his Representative) at Port of departure under penalty of \$100. Manifests to be extended under 1<sup>st</sup> Rule of Royal Order of 1 July 1859 under penalty of \$25.

30 Hours are allowed at Manila and 48 Hours at Cavite after entrance, to send to Collector a Manifest in Triplicate in Spanish, and four days are allowed for rectification of Manifest. See Rules III and V.



Flags of Nationality must be hoisted on entrance within sight of the Island of Corregidor, and Government Officers to be allowed to on board for inspection, who will provide the Captain with necessary instructions and Chart.

Penalty of \$8.- for non-exhibition of Flag at Manila and Cavite.

Master must have a Consignee or give Bonds in \$500.-  
Ships Stores or Tons used for Ballast cannot be landed.

Exports.

	1869	1870	1871	1872	1873	1874
Sugar Manila - Piculs	705,056	824,232	866,933	804,718	715,062	828,128
" Cebu "	118,517	114,806	100,887	186,499	169,262	201,702
" Iloilo "	277,508	312,378	371,615	537,186	545,071	355,809
Sugar Wood. Manila } Total	1101,081	1251,416	1399,435	1528,403	1429,395	1385,639
" Cebu } Piculs	195,110	176,924	75,424	94,572	172,678	215,000
" Iloilo }						93,928
						150,300

The Sugar Season opened, in 1871. on 25 February closed 25 September

" " 1872. 15 " " 15 "

" " 1873 20 " " 1 October

" " 1874 20 " " 1 "

Prices for Superior Current Quality ranged as follows:-

in 1871. from \$4.50 to \$5.75 per Picul.

1872 - 4.50 to 5.25 - -

1873 " 4.38 to 4.88 - -

1874 " 4.00 to 4.62 - -

	1871	1872	1873	1874
Highest Price	July 17	June 17	Jan'y 24	July 1
Lowest "	April 20	Feb'y 17	July 22	April 1

Prices for Taal Quality of Sugar ranged as follows:-

in 1871. from \$2.37 1/2 to \$2.87 1/2 per Picul

1872 " 2.62 1/2 to 3.25 - -

1873 " 2.25 to 2.93 3/4 - -

1874 " 2.25 to 2.75 - -

Highest price for Taal - February and October 1874

Lowest " " do May 1874.

The market at Iloilo ranges at from .06 1/4 to .25 Cents per Picul above that of Cebu, and below that of Manila.

Prices for Japan Wood. Straight Sticks out of Sadoon. (not afloat.)

in 1871 from \$1.00 to \$1.50 per Picul

1872 " 1.19 to 2.25 " "

1873 " 1.25 to 1.75 " "

1874 " 1.25 to 1.75 " "

ヒリッ。ハイン。寫。眞。乃。景。勢。ノ。記。