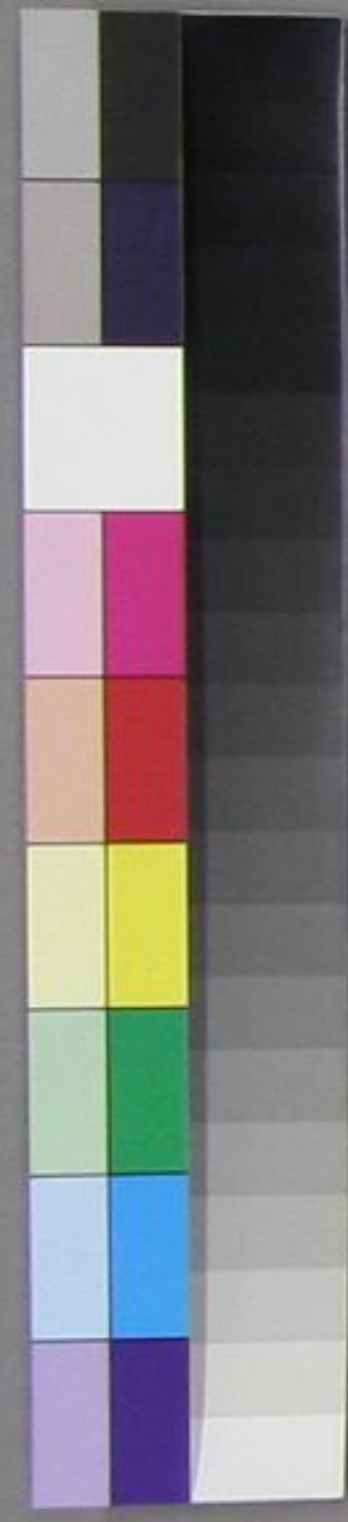




TELEGRAPH MAP  
 OF THE  
**WORLD**  
 SHEWING THE LINES IN OPERATION,  
 UNDER CONTRACT,  
 AND CONTEMPLATED,  
 TO  
 COMPLETE THE CIRCUIT OF THE GLOBE.

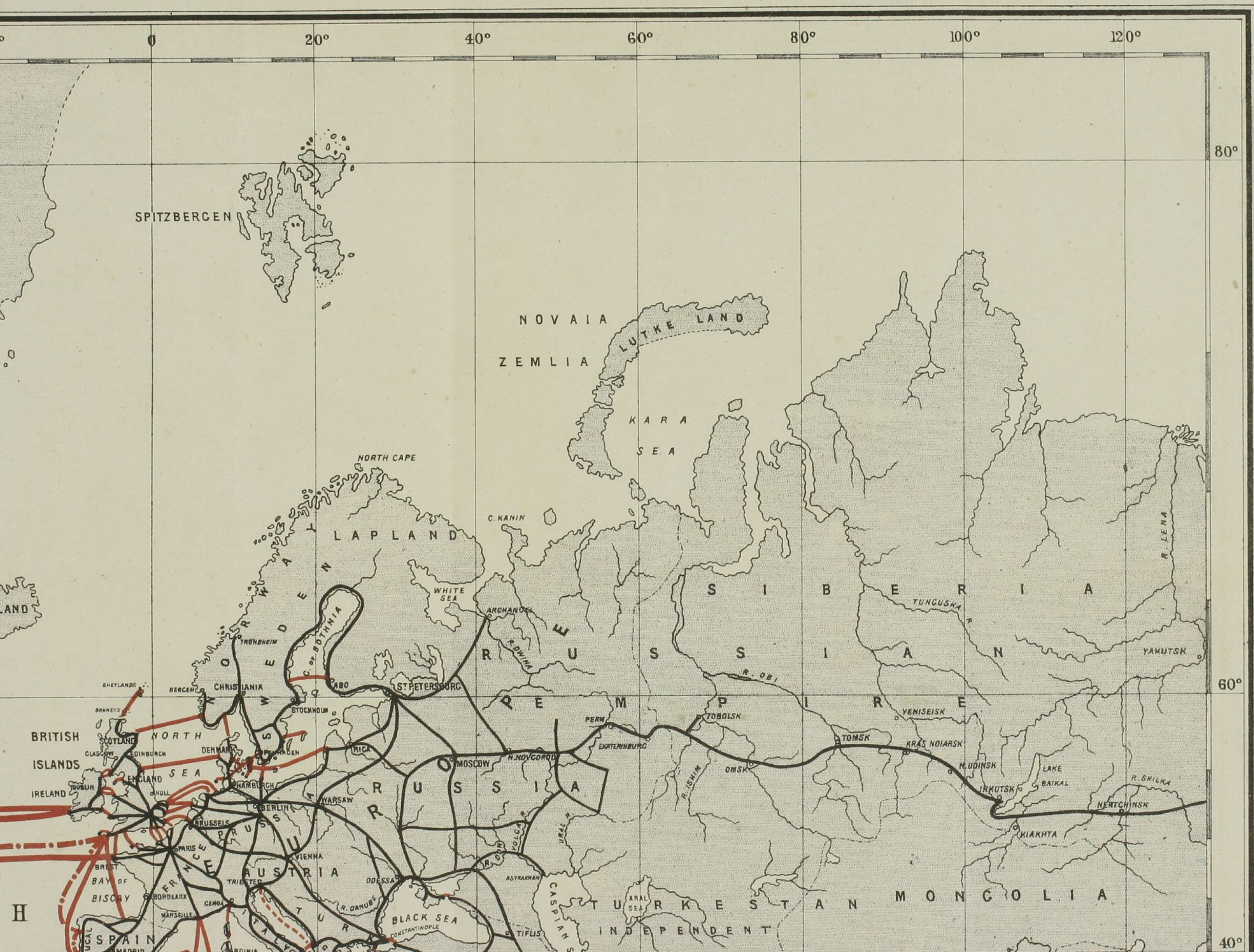
REFERENCE.

LAND LINES	now Existing (Main Lines)	—————
	in Course of Construction	- - - - -
SUBMARINE LINES	now Existing	—————
	in Course of Construction	- - - - -
	Proposed Extensions	—————
M <sup>r</sup> CYRUS W. FIELD'S PROPOSED CABLE ROUTES } From the UNITED STATES to JAPAN & CHINA }		
	UNITED STATES to ATCHA	1980
	ATCHA to YOKOHAMA	2255
	YOKOHAMA to SHANGHAI	1010
	SHANGHAI to HONG KONG	840
	ADD FOR SLACK	6085
	CABLE	1132
		7217 NAUTICAL MILES.



130 1 2 3 4 5 6 7 8 9 140 1 2 3 4 5 6 7 8 9 150 1 2 3 4 5 6 7 8 9 160 1 2 3 4 5 6 7 8 9 170 1 2 3 4 5 6 7 8 9 180 1 2 3 4 5 6 7 8 9 190













60° 80° 100° 120° 140° 160° 180° 160°

80°

60°

A R C T I C O C E A N

LUTKE LAND

LIKOV IS

PT BARROW

C. NORTH

BEHRING STAIT

R. YOUNKON

ALASKA

R U S S I A N E M P I R E

BEHRING SEA

OKHOTSK SEA

KAMTCHATKA

ATCHA ALEUTIAN ISLANDS

180°

TURKESTAN MONGOLIA

MANTCHOORIA

2255 N O R T H

TOBOLSK

YENISEISK

KRASNOIARSK

TOMSK

IRKUTSK

N. UDINSK

LAKE BAIKAL

NERTCHINSK

NICHO LAJEFF

SAGHALIEN

KIAKHTA

R. AMOUR

VLADIVOSTOCK

JESSO

R. ARGUN

SUNGARI

R. SHILKA

TUNGUSKA R.

YENISEI

AMATANCA R.

ANAGARA R.

R. LENA









1880

NORTH AMERICAN

CENTRAL AMERICAN

SOUTH AMERICAN

AFRICAN

EUROPEAN

GREENLAND SEA

NORTH ATLANTIC

CENTRAL ATLANTIC

SOUTH ATLANTIC

INDIAN OCEAN

CANADA

UNITED STATES

MEXICO

CENTRAL AMERICA

SOUTH AMERICA

BRAZIL

ARGENTINE

CHILE

PATAGONIA

BRITISH ISLANDS

FRANCE

GERMANY

AUSTRIA

ITALY

SPAIN

PORTUGAL

ALGERIA

MOROCCO

SAHARA OR GREAT DESERT

GUINEA

SENEGAMBIA

LOWER GUINEA

BENUELA

CAPE TOWN

C. OF GOOD HOPE

VICTORIA

PORTLAND

S. FRANCISCO

HONOLULU

NEW YORK

WASHINGTON

ST. LOUIS

CHICAGO

BOSTON

NEW ORLEANS

VERA CRUZ

MEXICO

HAVANNA

JAMAICA

CUBA

PANAMA

QUITO

SECHURA

LIMA

PISCO

SANTA

ARICA

COPIAPO

VALPARAISO

SANTIAGO

MENDOZA

BUENOS AYRES

VALDIVIA

WELLINGTON

PORT DESIRE

S. JOSEPH PEN

TRES MONTES PEN

N. JOHN

ST. JOHN

ST. PIERRE

AZORES

MADRID

PARIS

BREITENBURG

BERN

VIENNA

ST. PETERSBURG

BERLIN

ST. LOUIS

NEW YORK

WASHINGTON

CHICAGO

BOSTON

NEW ORLEANS

VERA CRUZ

MEXICO

HAVANNA

JAMAICA

CUBA

PANAMA

QUITO

SECHURA

LIMA

PISCO

SANTA

ARICA

COPIAPO

VALPARAISO

SANTIAGO

MENDOZA

BUENOS AYRES

VALDIVIA

WELLINGTON

PORT DESIRE

S. JOSEPH PEN

TRES MONTES PEN

N. JOHN

ST. JOHN

ST. PIERRE







L A N T I C

O C E A N

TRISTAN D'ACUNHA

C. of GOOD HOPE

AMSTERDAM PAUL

C. LEEUWIN

P<sup>r</sup> EDWARD I. MARION

CROZET IS.

KERGUELEN LAND

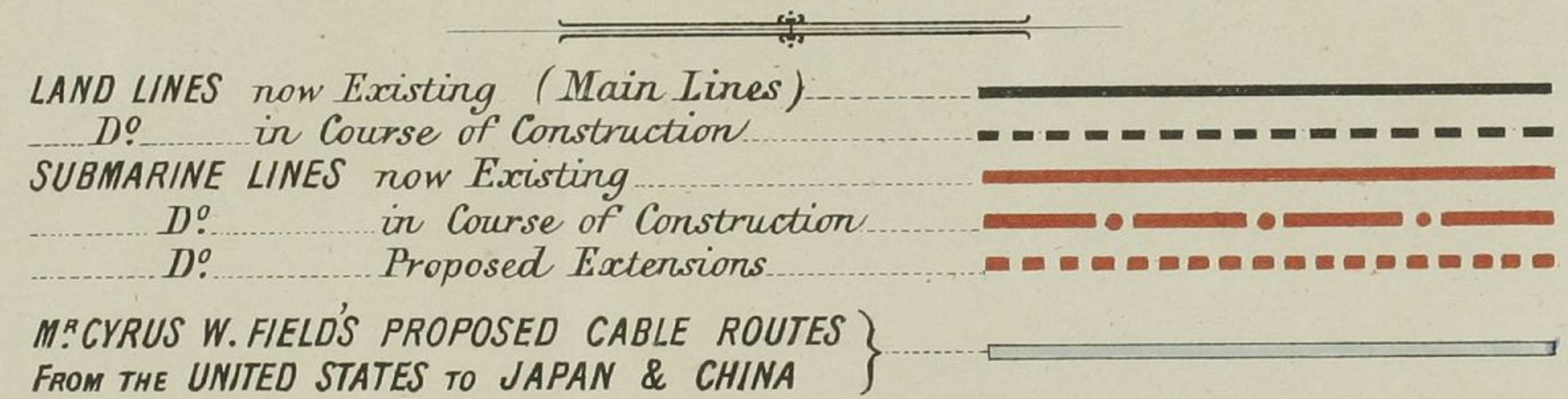
GEORGIA

SANDWICH LAND

40°

60°

# REFERENCE.



UNITED STATES TO ATCHA .....	1980
ATCHA TO YOKOHAMA .....	2255
YOKOHAMA TO SHANGHAI .....	1010
SHANGHAI TO HONG KONG .....	840

6085

ADD FOR SLACK .....

1132

CABLE 7217 NAUTICAL MILES.

g. West.

20°

Meridian of Greenwich.

20° East Long.

40°

60°

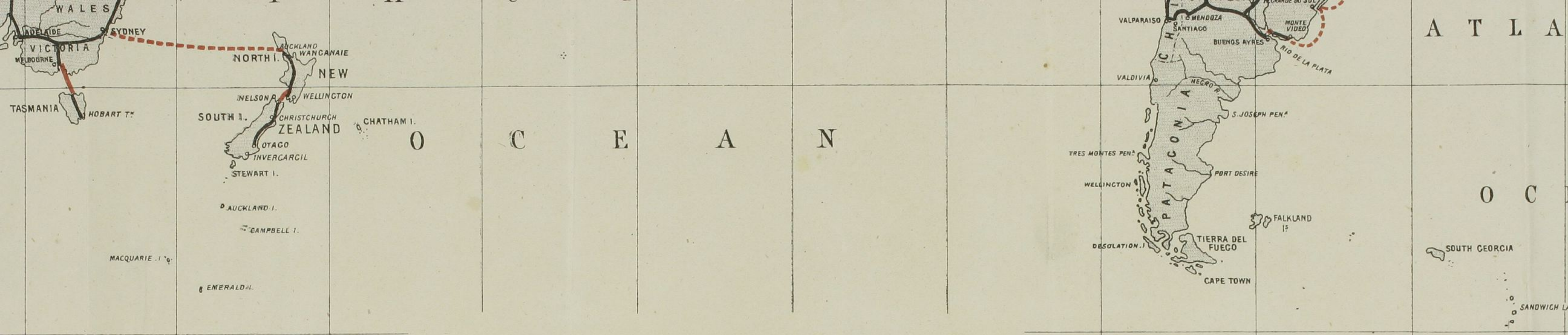
80°

100°

120°

80°





# TELEGRAPH MAP

OF THE

# WORLD

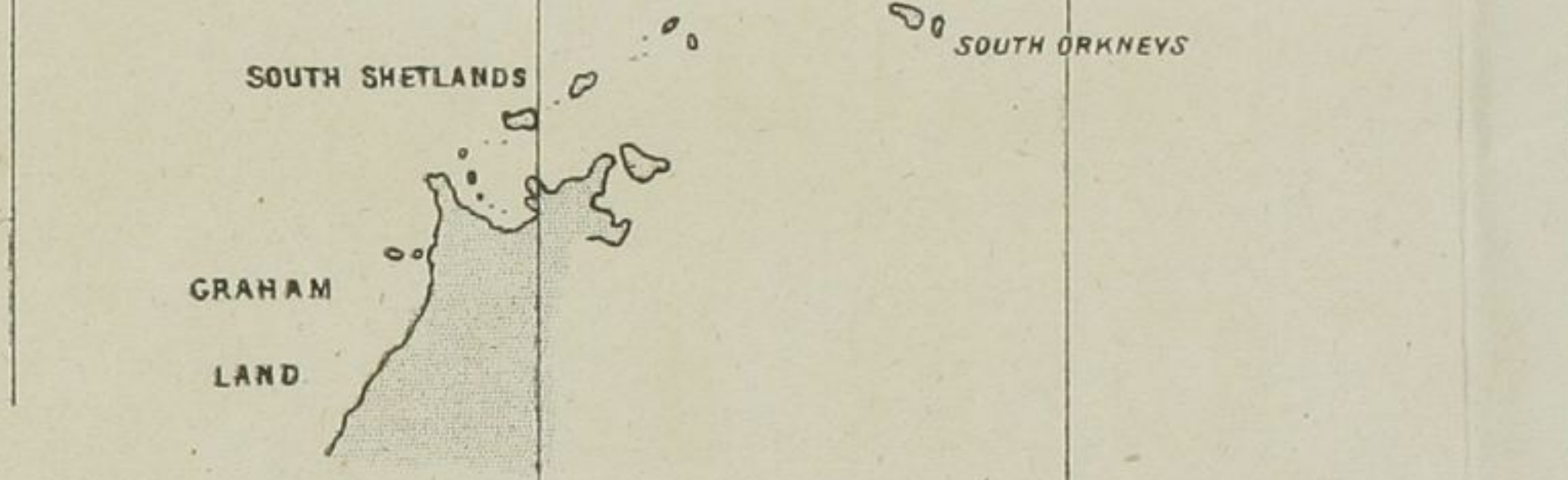
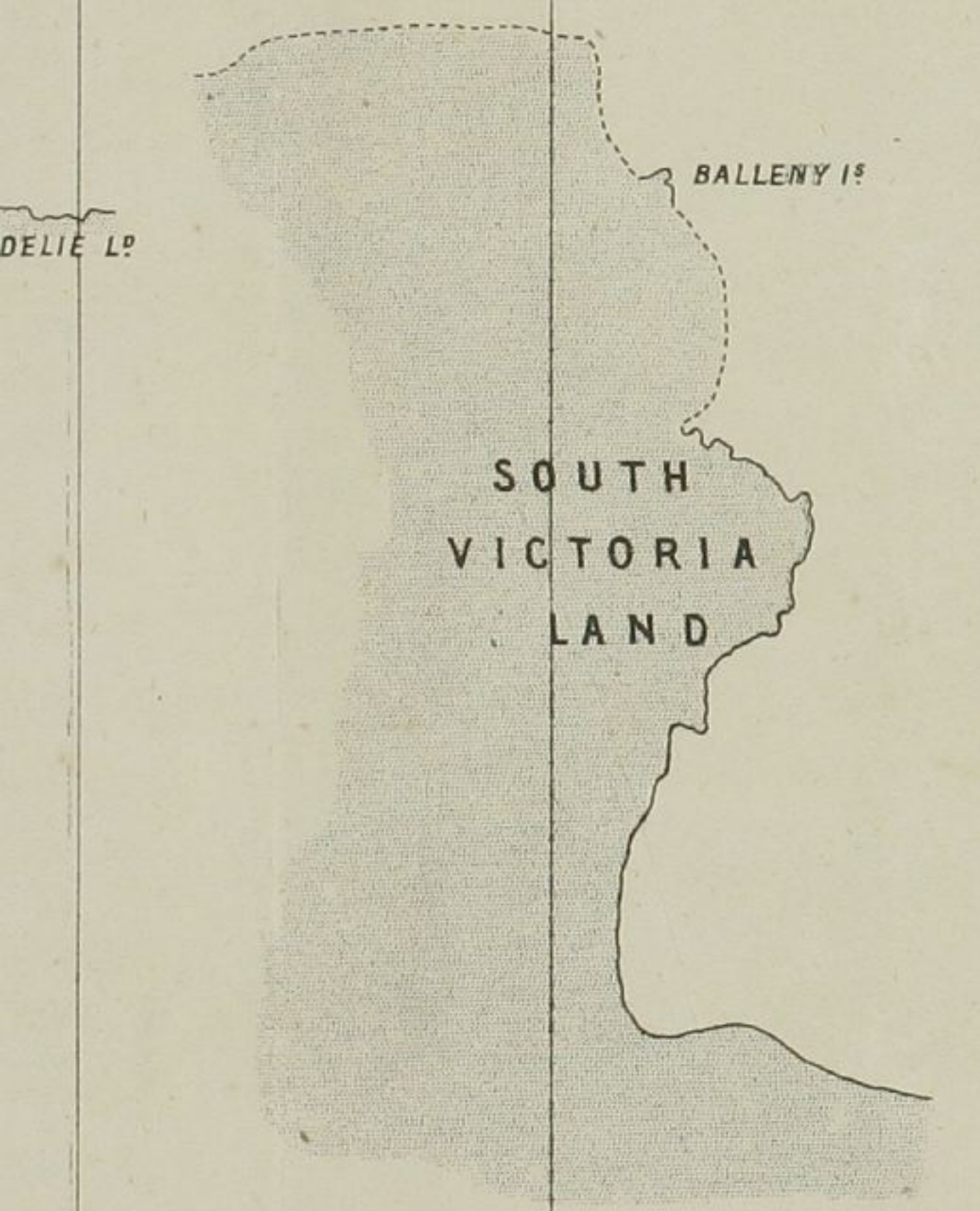
## SHEWING THE LINES IN OPERATION,

### UNDER CONTRACT,

### AND CONTEMPLATED,

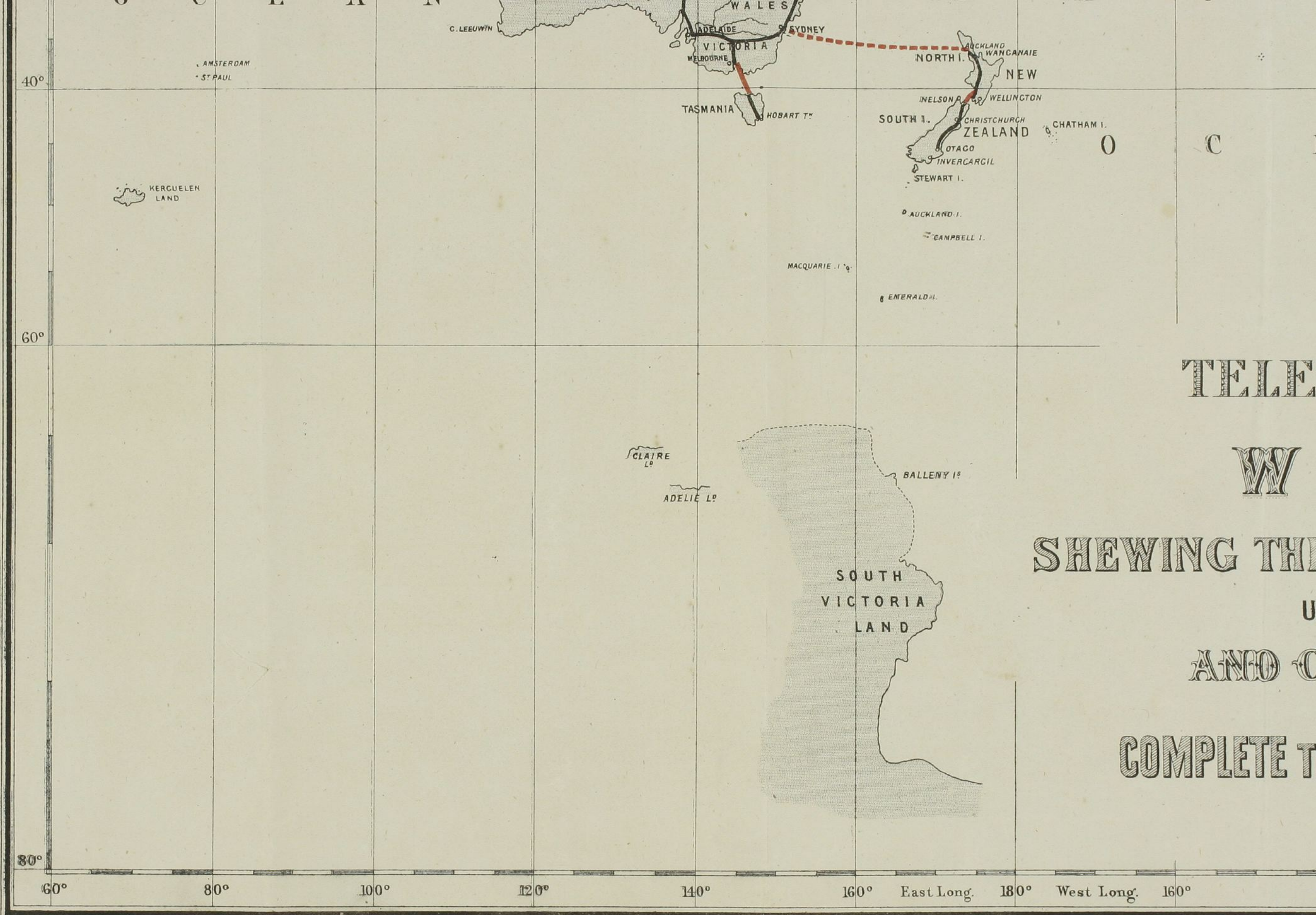
TO

## COMPLETE THE CIRCUIT OF THE GLOBE.



140° 160° East Long. 180° West Long. 160° 140° 120° 100° 80° 60° 40° Long. West. 2





F. le B. Bedwell, R.N., F.R.G.S. del.

TELE

W

SHEWING THE

U

AND C

COMPLETE T