

草刈器機之用法ノ示ス

中一 器機ノ掃除 是ノ清潔ニ依リ、最モ行要トシ  
ヨリシテ若シ掃除ノ極メテ汚リ、永ク保全シ難クハ  
夕給ニ運働ヲ從テ容易ナラス

中二 油ヲ與ヒシ度 此器機ヲ用テ前後ニ必ズ極上品ノ  
油ヲ以テ全部ヲ拭ヒ前示シテ残リタル古油濃ヲ拭  
去リ且其後元運轉危トシテ必ズ與フヘシ

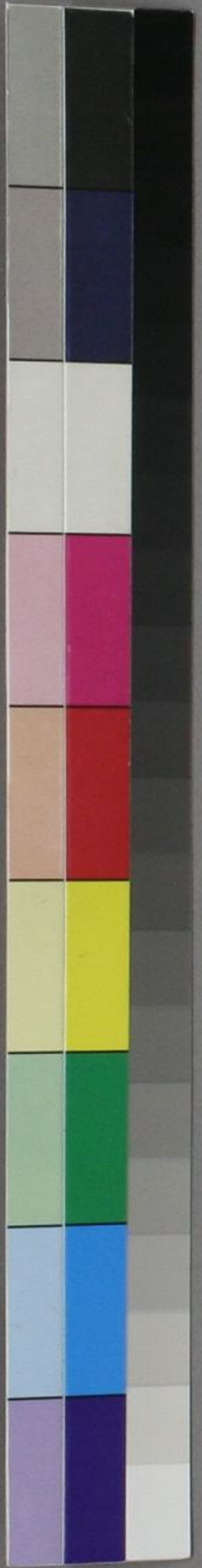
中三 危トシテ適宜ニ位置スルヘシ 運轉危トシテ其後ハ則  
率常ノ缺ノ如ク儆ク者ナレハ實ニ適者ノ位置ニ在ル  
ヘシ當テ予ルヘシ予テ運轉危トシテ器機ノ西側  
フル口ヲ以テ懸缺ヲ以テ廻ル者ナリ此懸缺ハ上下ノ  
捻ヲ以テ押付ケホホテ、捻ヲ以テ引離シ以テ其適宜ノ  
位置ヲ為シ而テ其後ハ融合セ廻轉セシム所ノ如クシテ

其ノ其適者ニ持来ス中ニ運働中、西ノノ官来ル  
者アレハ譬ハ一片ニテ汚残ヲモ容易ニ切去リ得ヘシ  
然レモ若シ高目ヲ過ルニ密閉セシムルハ及テ其運働  
難ヤンヘシ

中四 草ハ濕リタルヨリ乾ヒタル時ニ切シ安キ者トス

中五 川橋ノ掃除 草ヲ刈ラシト思フ地面ヲ以テ器機ヲ用  
テ前ニ地ニ石式ノ他ノ堅固者ノ掃ヒ去ル事ニ  
免ク汚意スヘシ知ラレハ危トシテ切テ損害ス

中六 此器機ハ三標ニ使用スルヲ得ヘシ  
其一 所屬ノ鉄蓋ヲ危トシテ前面ニ着ケ亦トヤノ板ヲ  
所屬ニ切去リタル草委ク其蓋内ニ集リ置カニ





敵乱スルヲ防ノ

其ニ前ニ云ハル函ト板トヲ取除ケル時ハ草ヲ

其ニ高ク生長シタル草ヲ切ルヲ要セハ前面ノ函ト

海部ノ板トヲ取除ケ板ノ前端ニ垂レタル長キ

廻リ木ヲ取り去リニ輪ニ小車ヲ両側ニ付スヘシ

カ七 草ヲ長ク或ハ短ク切ラレト物セハ千斤ノ「スベリ」ヲ要ス

シテ其吊綱ヲ設ス(カベリハ板ノ前面ニ在テ廻リ木ヲ割クスル)

カ八 両板ヲ高下セシメト板セトリ下ノ釘ヲ置キ重ク扱人

ノ大木ヲ依リ其自由ヲ得セシム

カ九 此等板運働ニ必ラス諸器ナラズト要ス若シ運來ニ

扱フハ小車ニ充分ノ速力アラザルヨリ草徒ラ切レ難シ

カ十 切去リタル草ヲ系函中ニ充積シタル内ハ直ニ取捨ツ

ヘシ極ラサレハ函外ニ散出シ危クモ地ニ廻轉ツ支ユ

カ十一 此等板ヲ刈掃ケ引玉シ或ハ甲ヨリモ地ニ窮カス内ハ短ク

取柄ヲ下向ニ押シ下ゲ危クノ地ニ舐レルハ掃逆向ニ

廻知クヘシ

カ十二 若シ機ヲ用ヒタル後ハ所ニ云フ如ク急ク掃除ヲ要シ

油ヲ充分ニ塗ルヘ而テ乾タル場所ニ居テ蓋ヲ着セ置ヘシ

カ十三 危クヲ察シト欲ヒ先ツ服ケル車輪後ヲ取除ケ而テ

両板ノ先ニアル木柄ヲ捨テ外ニ其木ヲ車輪ノ腕ニ手置ラズ

扱シ込ニ草車ヲ及對ニ早ク廻スヘシ此ニ例ニ詳ノ

郭指セサル様木又右ニテセル者ヲ折リ居然后ニ廻ラシ

ミ時ニ危クニ油ヲ落シホ(イメリ)ト云フ釘給ヲ振リ扱

思ハ  
スノ  
所ス



危丁又ハ其母ヲ鏡ケス且ツ右ノ運命中危丁ヲ此等ニ  
 産母・持来スルニ鋸給ハ彼而危丁ノ外他ノ部外ニ  
 掛ル一ロラス若シ他ノ部ニ産セハ其分ヲ害ス



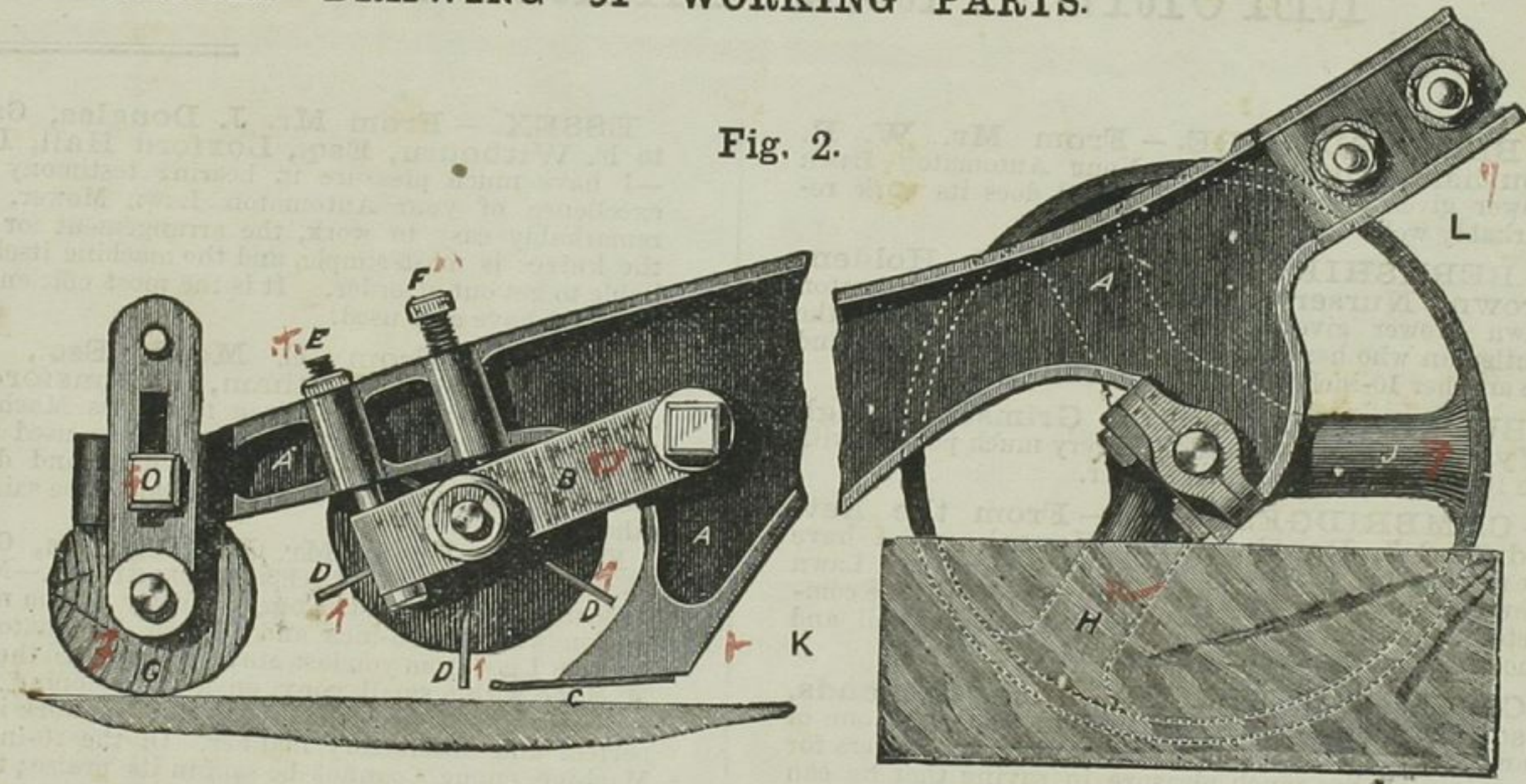
ons" on to the wall of the Tool House.

879

No. 10

ENLARGED DRAWING OF WORKING PARTS.

Fig. 2.



DIRECTIONS, Continued.





Directions for working Ransomes'

REPORTS FROM THIRTY-FIVE COUNTIES

1.—BEDFORDSHIRE.—From Mr. W. R. Southam, Dunstable.—Your Automaton Lawn Mower gives great satisfaction, and does its work remarkably well.

2.—BERKSHIRE.—From Mr. J. Holden, Crown Nursery, Reading.—The Automaton Lawn Mower gives satisfaction to myself and the gentleman who has bought it. I will thank you to send me another 10-inch Machine immediately.

3.—BUCKS.—From Mr. W. Grimsdell, High Wycombe.—Mr. Grimsdell is very much pleased with the 16-in. Automaton Lawn Mower.

4.—CAMBRIDGESHIRE.—From the Rev. Edward J. Routh, M.A., Newnham.—I have great pleasure in stating that the Automaton Lawn Mower I purchased from you a year ago gives me complete satisfaction in every way. It works well and smoothly, and does not get out of order.

CAMBRIDGESHIRE.—John Symonds, Esq., Dotterel Hall, Balsham, has used one of Ransomes, Sims & Head's Automaton Lawn Mowers for 4 years, and has much pleasure in saying that he can recommend it with confidence.

CAMBRIDGESHIRE.—From G. F. Josling, Esq., Great Thurlow Hall, nr. Newmarket.—

ESSEX.—From Mr. J. Douglas, Gardener to F. Witbourn, Esq., Loxford Hall, Ilford.—I have much pleasure in bearing testimony to the excellence of your Automaton Lawn Mower. It is remarkably easy to work, the arrangement for setting the knives is most simple, and the machine itself is not liable to get out of order. It is the most efficient Lawn Mower I have ever used.

ESSEX.—From E. Mead, Esq., South House, Great Waltham, Chelmsford.—The Automaton Lawn Mower is a first-class Machine. I am very pleased with its work. I have used it when the grass is wet, as well as when hard and dry, and see no difference in its work, which cannot be said of any others.

ESSEX.—From Mr. H. Harrison, Gardener to W. H. Dunnett, Esq., Dedham.—Now the mowing season is past, I beg to testify to you my satisfaction with the 36-inch and 20-inch Automaton Lawn Mowers I got from you last May; I have used the 36-inch Machine with a small pony, on a very sloping piece of grass, with perfect ease and it has done its work in a most perfect and satisfactory manner. Of the 20-inch hand Machine, enough cannot be said in its praise; the easiness of draught, and the clean and perfect cut, are most satisfactory. Our lawn was sown with grass seed, so it was rather in a rough state when we commenced with