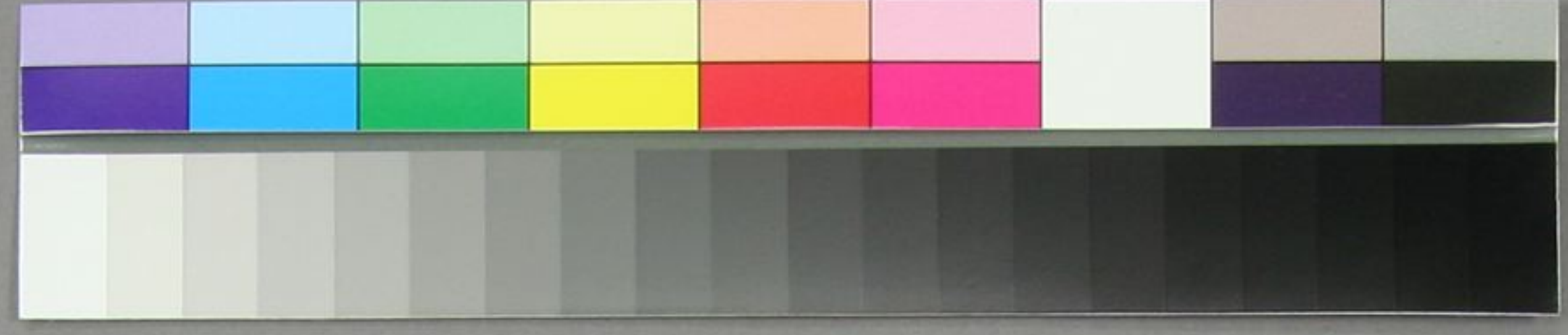


Handwritten text in a cursive script, likely a historical document or manuscript. The text is written on a single sheet of paper and is oriented vertically. The script is highly stylized and difficult to decipher without a key. The text appears to be a list or a series of entries, possibly names or titles, written in a cursive hand. The paper shows signs of age and wear.



大正四年四月

東京市神田区

大塚町

大塚

大塚

大塚

大塚

大塚

大塚

大塚

大塚

大塚

大塚

大塚