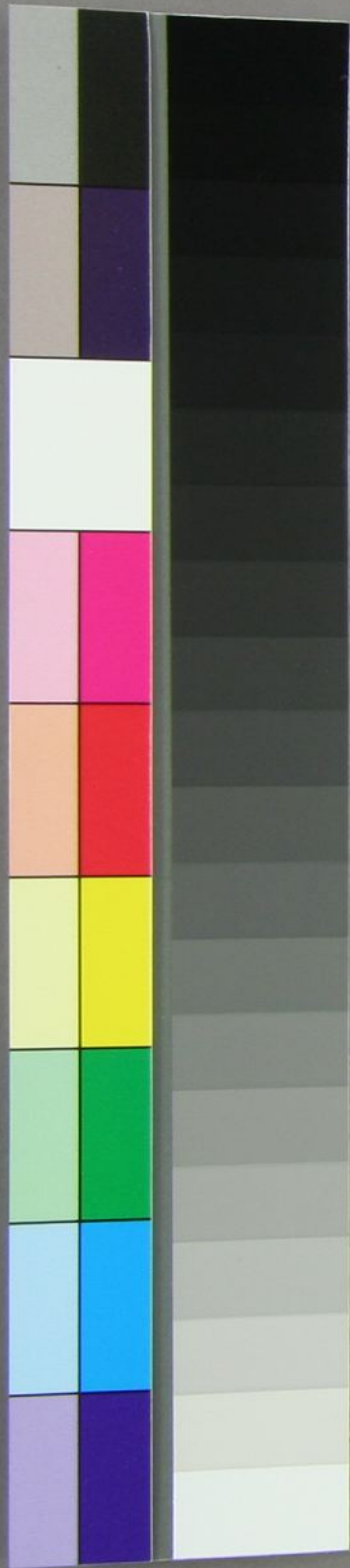


On the 6<sup>th</sup> inst I telegraphed to you for  
a quotation for a cargo of Japan Rice delivered from ship's side  
in the mediterranean I am now waiting your reply.

In the quotation I mean you to include  
everything. in short I want to know what a cargo would cost  
delivered in the Mediterranean. I am working with Fraser & Co.  
to try and get orders and as they had an enquiry for a cargo  
on their recommendation I wired to you.

I mentioned superior quality by which  
I meant new crop and good white colour similar to W. H. & Co.  
first shipment per "dehilled" Rice called Mino mai and what  
I could sell at perhaps 12/



From "Public Ledger" London 20<sup>th</sup> Aug. 1875

Statement of Comparative Prices for the last 52 weeks compared with those of the previous year -

Date.	RICE.							
	White Bengal.							
	1874			1873				
	s.	d.	s.	d.	s.	d.		
Aug. 21	9	0	13	0	8	9	13	0
28	9	6	13	3	8	9	13	0
Sept. 4	9	6	13	3	8	9	13	3
11	9	0	13	3	9	0	13	3
18	9	0	13	3	9	3	13	6
25	9	0	13	3	9	3	13	6
Oct. 2	9	0	13	3	9	3	13	3
9	9	0	13	3	9	0	13	3
16	9	0	13	0	9	0	13	3
23	9	0	12	6	9	0	13	3
30	9	0	12	6	9	3	13	6
Nov. 6	9	0	12	3	10	3	14	0
13	9	0	12	0	10	6	14	9
20	9	0	12	0	11	6	15	6
27	9	0	12	0	12	0	16	6
Dec. 4	9	0	12	0	11	6	16	6
11	9	0	12	0	11	6	16	6
18	9	0	12	0	11	0	16	3
25	9	0	12	0	11	0	16	0
					1875		1874	
Jan. 1	9	0	12	0	11	0	16	0
8	9	0	12	0	11	0	16	0
15	9	0	12	0	11	0	16	3
22	9	0	12	0	11	0	16	3
29	9	0	12	0	11	0	16	6
Feb. 5	9	0	13	0	11	0	16	6
12	9	0	13	0	11	6	16	6
19	9	3	13	6	11	0	16	6
26	9	3	12	6	11	0	16	6
March 5	9	3	13	6	10	6	16	3
12	9	3	13	6	10	6	16	0
19	9	0	13	6	10	6	16	0
26	9	0	13	0	10	6	16	0
April 2	9	0	13	0	10	6	16	0
9	9	0	13	0	10	6	16	0
16	9	3	12	6	10	3	15	6
23	9	0	12	6	10	3	15	6
30	9	0	12	6	10	3	15	0
May 7	9	0	12	6	9	6	13	6
14	9	0	12	9	9	6	13	6
21	9	0	12	9	9	9	14	0
28	9	0	12	9	9	9	14	0
June 4	9	0	12	9	9	9	13	6
11	9	6	12	9	9	6	12	6
18	9	6	12	9	9	0	12	6
25	9	6	12	9	9	6	12	0
July 2	9	0	12	9	9	6	12	0
9	9	0	12	9	9	6	12	0
16	9	0	12	9	9	6	12	0
23	9	0	12	9	9	0	12	0
30	9	0	12	9	9	0	12	6
Aug. 6	9	0	12	9	9	0	12	6
13	9	0	12	9	9	0	12	6



