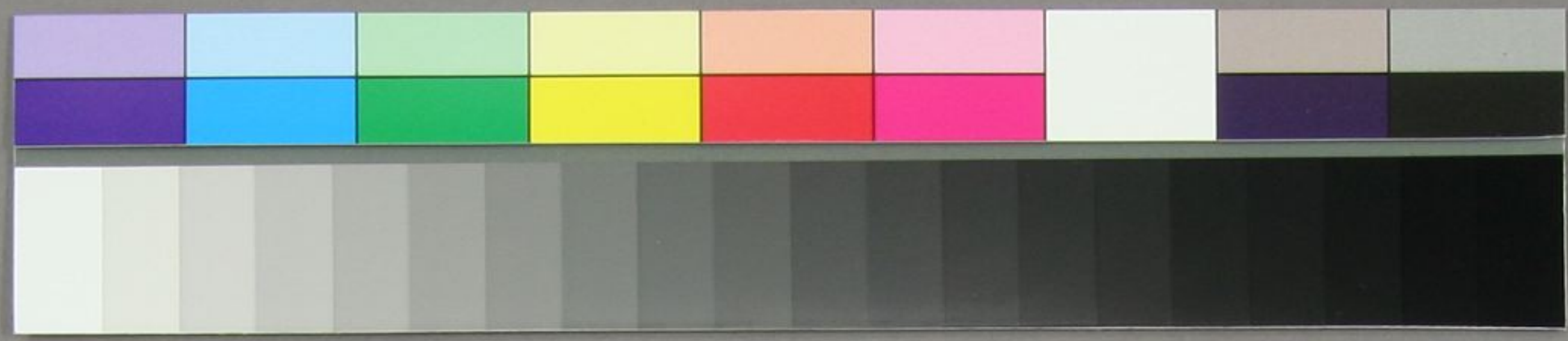
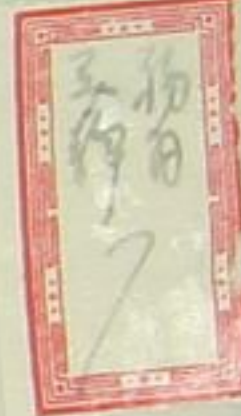


Handwritten Japanese text in cursive (sōsho) style, consisting of approximately 15 vertical columns of characters. The text is written on aged, yellowish paper. The characters are fluid and connected, typical of the cursive style. The text appears to be a formal document or a letter, possibly related to the 'Shōmei' (Seal of Office) mentioned in the stamp.



Handwritten Japanese text in cursive style (sōsho), likely a letter or document. The text is written on a single sheet of paper, possibly a page from a book or a separate document, and is oriented vertically. The characters are fluid and connected, characteristic of the cursive style. The text is written in black ink on a light-colored paper. The content is difficult to decipher due to the cursive nature of the script, but it appears to be a continuous passage of text. The paper shows signs of age, including some discoloration and wear at the edges.

