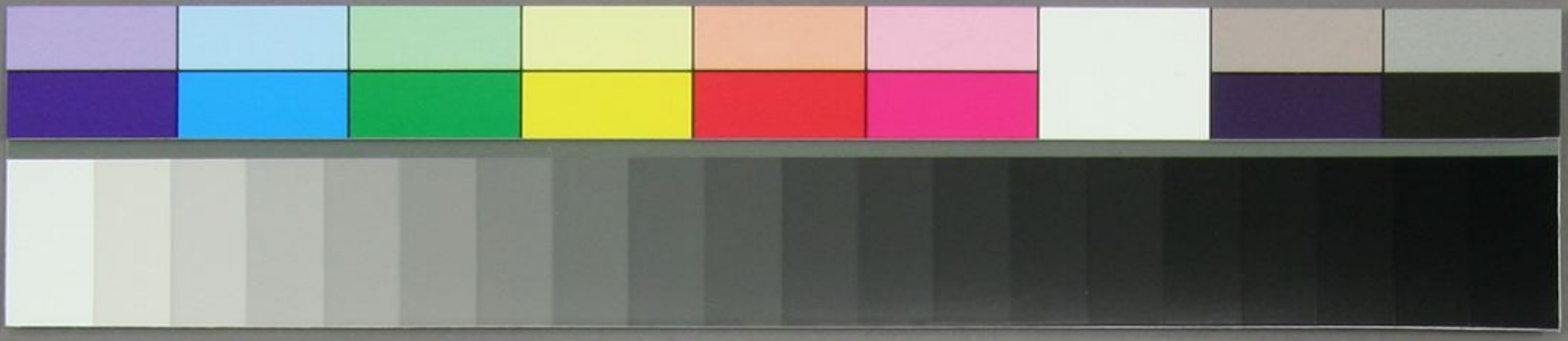


Handwritten Japanese calligraphy in cursive style (sōsho), consisting of approximately 15 vertical columns of text. The characters are fluid and interconnected, typical of the cursive script. The text is written on a light-colored paper with a vertical crease down the middle.



神皇正統記

卷之五

白河院

院

院

院

院

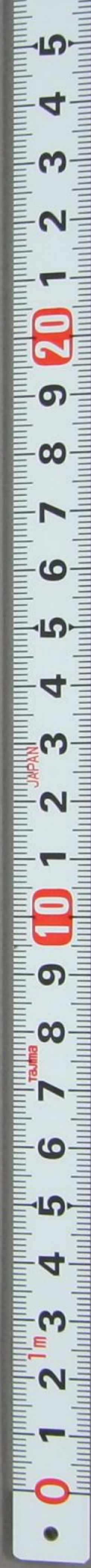
院

院

院

院

留大生与总长伯爵大隈重信
阁下





長崎省吾