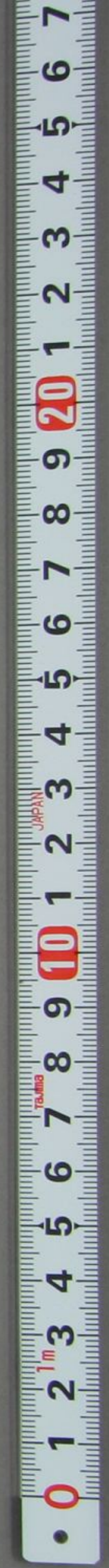
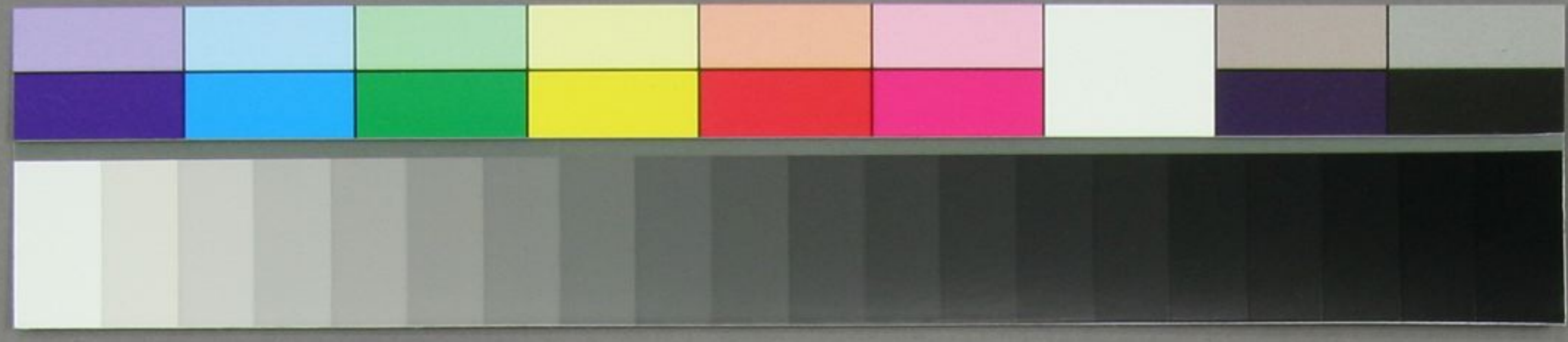


Handwritten Japanese calligraphy in cursive style (sōsho). The text is written vertically on a single sheet of paper. The characters are fluid and connected, typical of the cursive hand. The text appears to be a personal letter or a short piece of prose. The characters are written in black ink on aged, slightly yellowed paper. The writing starts from the top left and moves downwards, with each line starting further to the right than the one above it.



實之徳、

かゝる事、

解、

之、

何、

之、

之、

之、

之、

之、

之、

之、

考
籍
在
錄

大
隈
三
宅
俊



中井

羽州権二