

卿
公

大 日 本
各 港 輸 出 入 月 表

明 治 十 一 年 第 二 月 中

大 藏 省

關 稅 局

編 纂

MONTHLY RETURN

OF

HIS IMPERIAL MAJESTY'S CUSTOMS OF JAPAN,

FOR THE MONTH FEBRUARY, 1878.

Published by

The Bureau of Customs.

東京大藏省紙幣局活版部印行

PRINTED AT KAPPANBU (TYPE PRINTING SECTION)
OF BUREAU OF CURRENCY, TOKIO.



輸出
EXPORTS.

1

品名 DESCRIPTION.	橫濱 YOKOHAMA.				神戶 KOBE.				大阪 OSAKA.			
	數量 Quantity.	元價 Declared Value.		稅 Duty.	數量 Quantity.	元價 Declared Value.		稅 Duty.	數量 Quantity.	元價 Declared Value.		稅 Duty.
		金圓	錢			金圓	錢			金圓	錢	
內國產 有稅品 Domestic productions, Dutiable.												
1 乾 髓 Awabi, dried	斤 Cty.	65,672	19,963.30.0	620.85.4	362	102.00.0	3.48.6					
2 全 藍 Campbor	"	6,650	2,061.50.0	62.24.4								
3 石 炭 Coal	"				23,472	3,730.00.0	135.02.6					
4 全 銅 Copper	"				18,480	53.00.0	2.38.0					
5 銅 銅 ore	"				11,760	35.00.0	1.47.0					
6 鑛 銅 ore	"				19,459	3,137.20.0	155.40.8					
7 扇 鯛 Fish, cuttle	數 No.	83,902	12,871.80.0	624.49.0								
8 扇 鯛 Fish, cuttle	斤 Cty.	209,929	5,732.00.0	285.27.1	354,191	11,727.60.0	586.38.0					
9 人 蔘 Ginseng	"	140,756	15,826.10.0	471.59.8	31,074	4,477.00.0	102.68.6					
10 海 扇 Irico (Biche de mer)	"	114	9.00.0	37.4								
11 天 全 Isinglass	"	15,394	7,700.00.0	376.75.6	831	867.02.0	43.29.7					
12 寒 全 Lacquer ware	"	330	111.00.0	3.18.6	5,977	1,810.00.0	56.49.1					
13 漆 全 Mushrooms	"	5,805	2,210.00.0	42.00.6	91,549	19,973.00.0	658.94.5	8.956	2,200.00.0	64.77.6		
14 椎 全 Porcelain	"	2,000	360.00.0	14.04.0								
15 陶 全 Tea	"		7,734.40.0	386.72.0		1,271.72.0	63.53.9					
16 全 茶 Mushrooms	"		2,002.20.0	100.11.0								
17 全 茶 Porcelain	斤 Cty.	10,875	3,735.10.0	172.25.2	45,635	17,068.50.0	724.36.6					
18 全 茶 Tea	"	1,450	507.50.0	22.62.0								
19 全 茶 Porcelain	"		2,060.60.0	104.53.0		2,101.40.0	105.07.0					
20 全 茶 Tea	"		6,769.00.0	338.45.0		952.60.0	47.63.0					
21 全 茶 Tea	斤 Cty.	45,330	1,398.45.0	84.83.9	195,864	6,236.12.0	372.22.8					
22 全 茶 Tea	"	20,631	551.40.0	19.81.0								
23 全 茶 Tea	"	85,471	453,960.60.0	20,358.45.3								
24 全 茶 Tea	"	7,965	44,214.40.0	1,863.89.2								
25 全 茶 Tea	"	20,200	20,600.00.0	483.63.1								
26 全 茶 Tea	"	12,406	22,310.00.0	797.82.9								
27 全 茶 Tea	"	13,800	11,200.00.0	310.61.1								
28 全 茶 Tea	"	89,054	31,543.78.0	639.09.1	6,579	1,835.00.0	47.59.0					
29 全 茶 Tea	"	256,460	50,744.22.0	2,825.27.6	155,821	33,271.71.0	1,753.62.0					
30 全 茶 Tea	"	360	99.60.0	3.93.1								
31 全 茶 Tea	"	119	56.00.0	2.8.6	50,016	4,260.00.0	120.62.0					
32 全 茶 Tea	"	38	61.0	0.8.7								
33 全 茶 Tea	"	19,305	5,500.00.0	93.11.3								
34 全 茶 Tea	"		38,397.03.0	1,827.12.1		102,639.54.0	5,054.82.9	2,300.00.0		182.65.0		
35 全 茶 Tea	"		11,369.88.0	562.73.6		393.00.0	19.65.0					
36 全 茶 Tea	"		781,629.53.0	33,495.70.7		215,941.41.0	10,051.71.1	4,500.00.0		247.42.6		
37 全 茶 Tea	"							21.00.0		1.05.0		
38 全 茶 Tea	"							4,479.00.0		216.37.6		
39 全 茶 Tea	"											
40 全 茶 Tea	"											
41 全 茶 Tea	"											
42 全 茶 Tea	"											
43 全 茶 Tea	"											
44 全 茶 Tea	"											
45 全 茶 Tea	"											
46 全 茶 Tea	"											
47 全 茶 Tea	"											
48 全 茶 Tea	"											
49 全 茶 Tea	"											
50 全 茶 Tea	"											
51 全 茶 Tea	"											
52 全 茶 Tea	"											
53 全 茶 Tea	"											
54 全 茶 Tea	"											
55 全 茶 Tea	"											
56 全 茶 Tea	"											

* 印ハ日本商輸出ニ係ル Exports by Japanese merchants.

輸出
EXPORTS.

1

品名 DESCRIPTION.	長崎 NAGASAKI.				函館 HAKODATE.				新潟 NIIGATA.				總計 TOTAL.				
	數量 Quantity.	元價 Declared Value.		稅 Duty.	數量 Quantity.	元價 Declared Value.		稅 Duty.	數量 Quantity.	元價 Declared Value.		稅 Duty.	數量 Quantity.	元價 Declared Value.		稅 Duty.	
		金圓	錢			金圓	錢			金圓	錢			金圓	錢		金圓
256 乾 髓 Awabi, dried	斤 Cty.	82.00.0	2.46.9	3.987	1,100.00.0	37.97.7							70,227	21,247.30.0	664.78.6	1	
257 全 藍 Campbor	"			8,266	2,479.80.0	77.37.0							14,916	4,541.30.0	139.61.4	2	
258 石 炭 Coal	"	9,482	1,574.00.0	54.88.1									32,954	5,304.00.0	189.90.7	3	
259 全 銅 Copper	"	9,500,856	22,168.00.0	1,216.70.9									9,519,336	22,216.00.0	1,219.08.9	4	
260 銅 銅 ore	"	1,646,400	3,600.00.0	205.47.1									1,658,160	3,635.00.0	206.94.1	5	
261 鑛 銅 ore	"												19,459	3,137.20.0	155.40.8	6	
262 扇 鯛 Fish, cuttle	"												83,902	12,871.80.0	624.49.0	7	
263 扇 鯛 Fish, cuttle	"												209,929	5,732.00.0	285.27.1	8	
264 人 蔘 Ginseng	"												140,756	15,826.10.0	471.59.8	9	
265 海 扇 Irico (Biche de mer)	"												114	9.00.0	37.4	10	
266 天 全 Isinglass	"												15,394	7,700.00.0	376.75.6	11	
267 寒 全 Lacquer ware	"												330	111.00.0	3.18.6	12	
268 漆 全 Mushrooms	"												5,805	2,210.00.0	42.00.6	13	
269 椎 全 Porcelain	"												2,000	360.00.0	14.04.0	14	
270 陶 全 Tea	"													7,734.40.0	386.72.0		15
271 全 茶 Mushrooms	"													2,002.20.0	100.11.0		16
272 全 茶 Porcelain	斤 Cty.	10,875	3,735.10.0	172.25.2	45,635	17,068.50.0	724.36.6						10,875	3,735.10.0	172.25.2	17	
273 全 茶 Tea	"	1,450	507.50.0	22.62.0									1,450	507.50.0	22.62.0	18	
274 全 茶 Porcelain	"		2,060.60.0	104.53.0		2,101.40.0	105.07.0							2,060.60.0	104.53.0		19
275 全 茶 Tea	"		6,769.00.0	338.45.0		952.60.0	47.63.0							6,769.00.0	338.45.0		20
276 全 茶 Tea	斤 Cty.	45,330	1,398.45.0	84.83.9	195,864	6,236.12.0	372.22.8						45,330	1,398.45.0	84.83.9	21	
277 全 茶 Tea	"	20,631	551.40.0	19.81.0									20,631	551.40.0	19.81.0	22	
278 全 茶 Tea	"	85,471	453,960.60.0	20,358.45.3									85,471	453,960.60.0	20,358.45.3	23	
279 全 茶 Tea	"	7,965	44,214.40.0	1,863.89.2									7,965	44,214.40.0	1,863.89.2	24	
280 全 茶 Tea	"	20,200	20,600.00.0	483.63.1									20,200	20,600.00.0	483.63.1	25	
281 全 茶 Tea	"	12,406	22,310.00.0	797.82.9									12,406	22,310.00.0	797.82.9	26	
282 全 茶 Tea	"	13,800	11,200.00.0	310.61.1									13,800	11,200.00.0	310.61.1	27	
283 全 茶 Tea	"	89,054	31,543.78.0	639.09.1	6,579	1,835.00.0	47.59.0						89,054	31,543.78.0	639.09.1	28	
284 全 茶 Tea	"	256,460	50,744.22.0	2,825.27.6	155,821	33,271.71.0	1,753.62.0						256,460	50,744.22.0	2,825.27.6	29	
285 全 茶 Tea	"	360	99.60.0	3.93.1									360	99.60.0	3.93.1	30	
286 全 茶 Tea	"	119	56.00.0	2.8.6	50,016	4,260.00.0	120.62.0						119	56.00.0	2.8.6	31	
287 全 茶 Tea	"	38	61.0	0.8.7									38	61.0	0.8.7	32	
288 全 茶 Tea	"	19,305	5,500.00.0	93.11.3									19,305	5,500.00.0	93.11.3	33	
289 全 茶 Tea	"		38,397.03.0	1,827.12.1		102,639.54.0	5,054.82.9	2,300.00.0		182.65.0				38,397.03.0	1,827.12.1		34
290 全 茶 Tea	"		11,369.88.0	562.73.6		393.00.0	19.65.0										

輸入 IMPORTS.

輸入 IMPORTS.

Main table with columns for Description, Yokohama, Kobe, Osaka, Nagasaki, Hakodate, Niigata, and Total. Sub-headers include Quantity, Declared Value, and Duty in Gold and Silver Yen.

* 印ハ日本商輸入ニ限ル Imports by Japanese merchants.

輸出入要計通覽
ABSTRACTS OF IMPORTS AND EXPORTS.

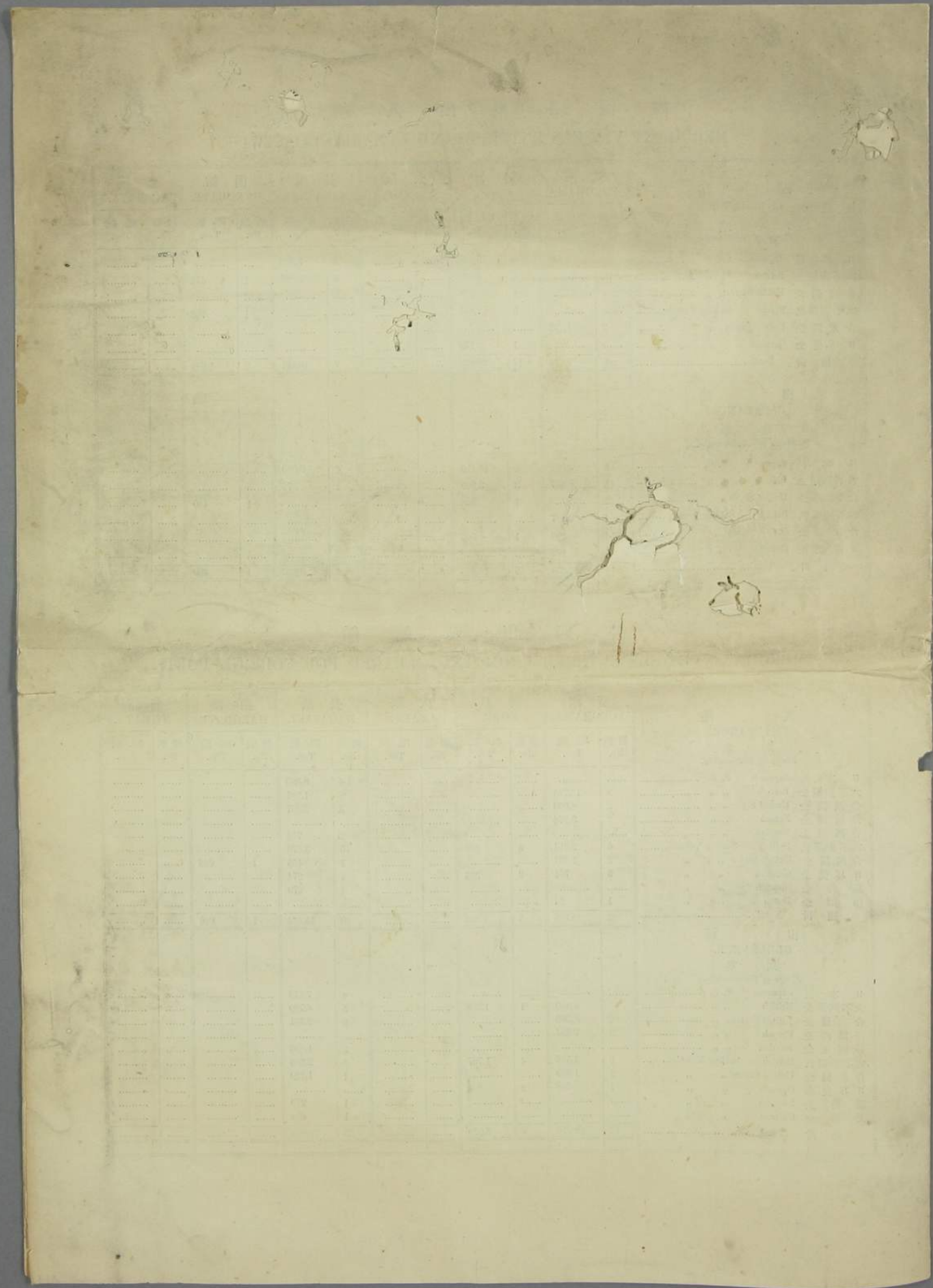
Table with columns for Exports (輸出) and Imports (輸入), categorized by value (元價) and type (種類). Includes sub-totals for domestic and foreign goods, and a summary of duties and fees.

內國各港出入船舶
MERCHANT VESSELS ENTERED AND CLEARED COASTWISE.

Table showing merchant vessels entered and cleared coastwise, categorized by port (Yokohama, Kobe, Osaka, Nagasaki, Hakodate, Niigata) and nationality (Japan, British, etc.).

外國出入船舶
MERCHANT VESSELS ENTERED FROM AND CLEARED FOR FOREIGN PORTS.

Table showing merchant vessels entered from and cleared for foreign ports, categorized by port (Yokohama, Kobe, Osaka, Nagasaki, Hakodate, Niigata) and nationality (Japan, British, French, etc.).



明治十二年一月十日
上中下區別在字表

國別	上米	中米	下米	合計
河内	1,074,000	0	0	1,074,000
豊前	1,000	0	0	1,000
哉中	10,721,203	0	0	10,721,203
陸奥	0	0	113,5240	113,5240
通計	12,016,203	0	113,5240	12,129,723
肥後	1,183,080	0	0	1,183,080
肥後	382,704	0	0	382,704
通計	1,565,784	0	0	1,565,784
合計	13,581,987	0	113,5240	13,695,511

