

柿澤村

塩尻  
塩尻停車場

桔梗ヶ原

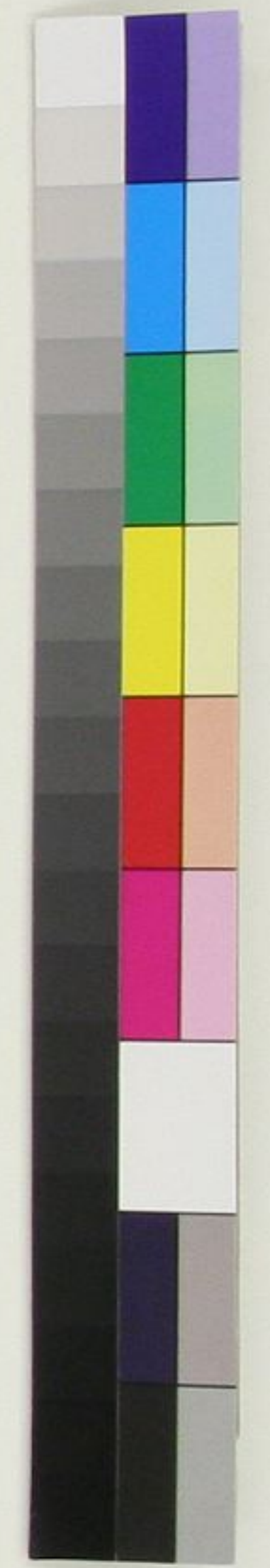
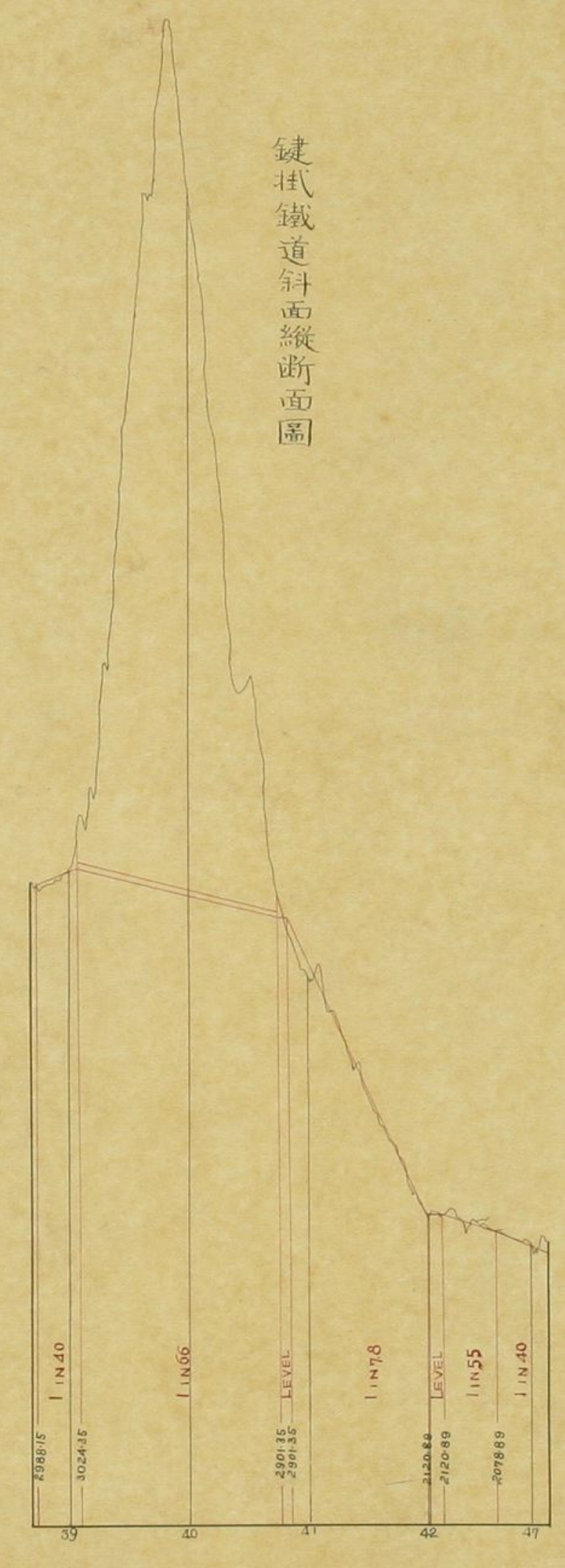
吉田村

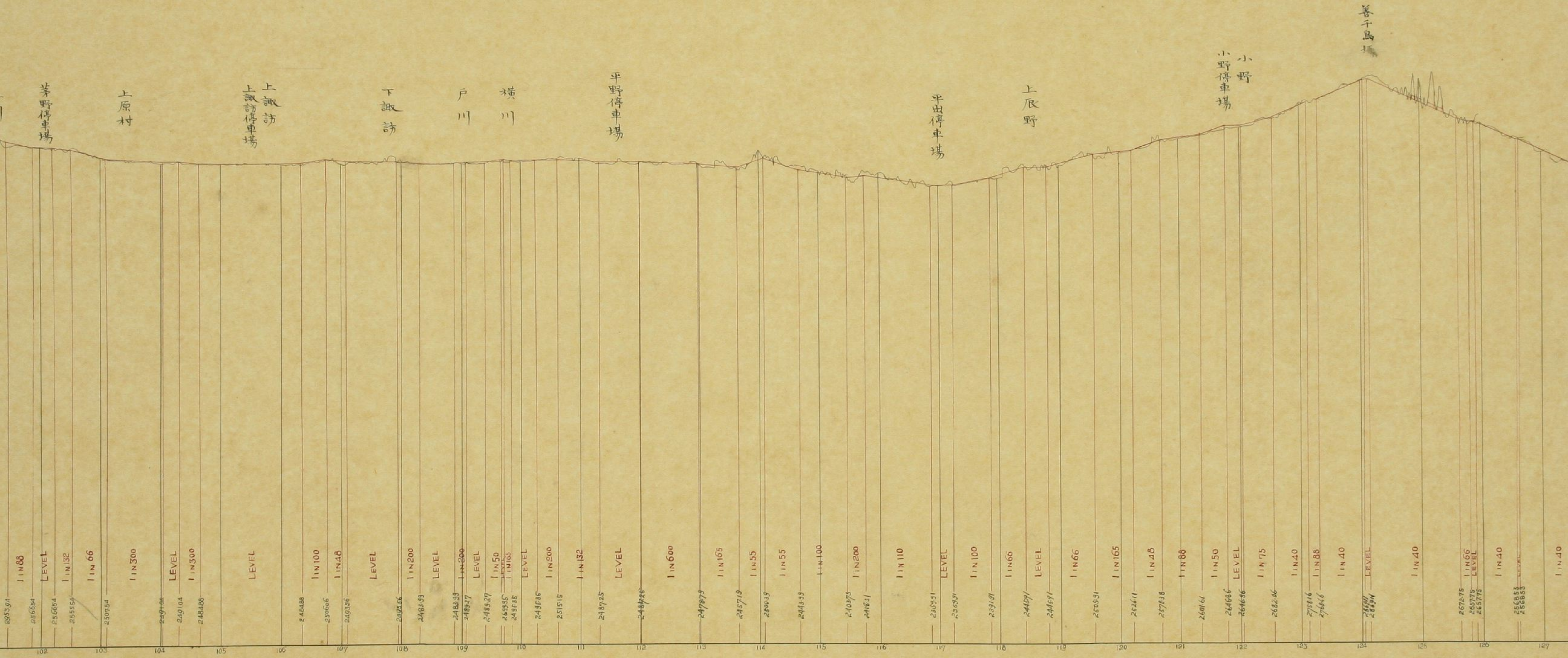
村井村

出川村  
松本停車場

松本

鍵掛鐵道斜面縦断面圖





茅野停車場

上原村

上諏訪  
上諏訪停車場

下諏訪

戸川

横川

平野停車場

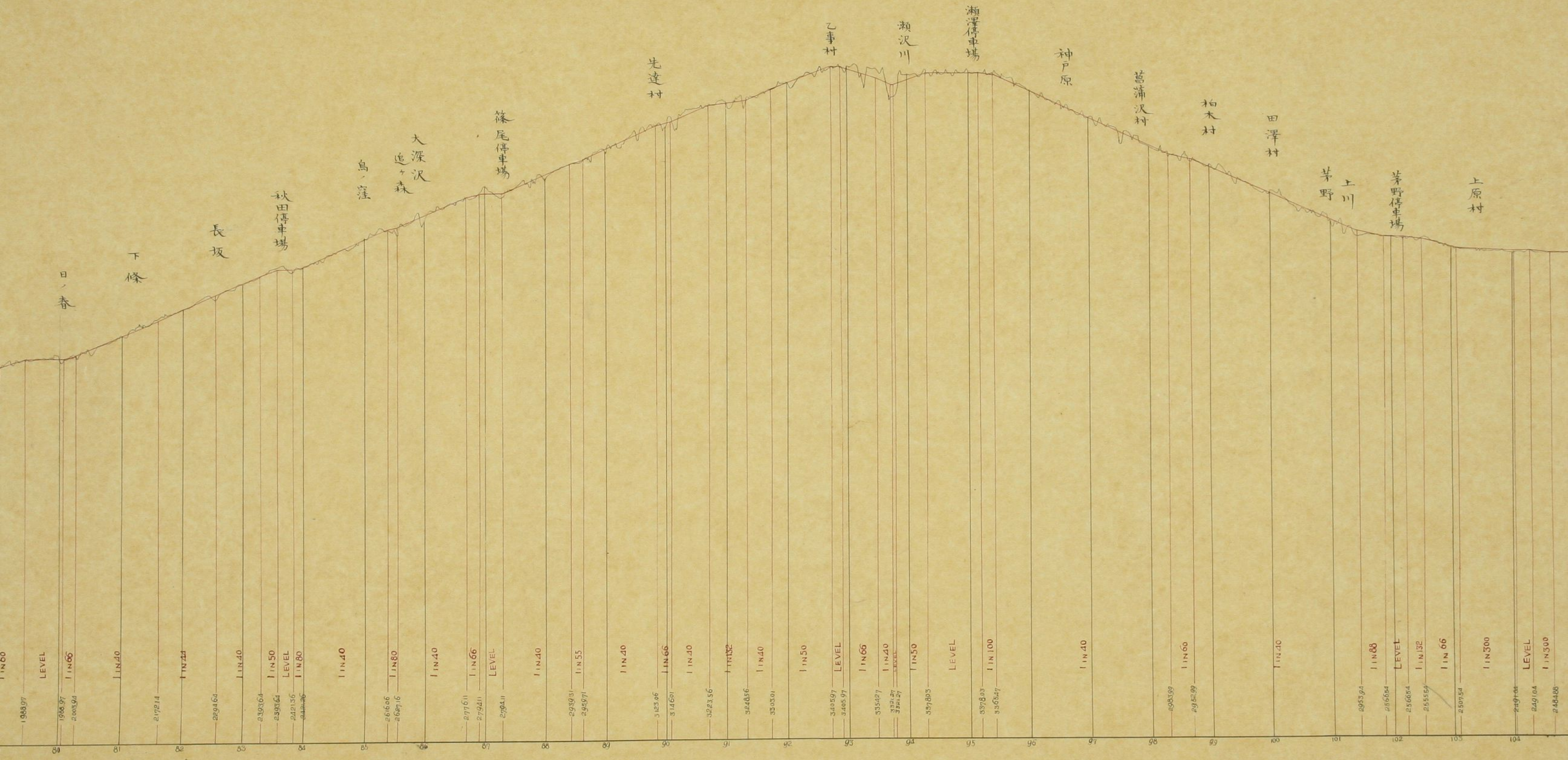
平出停車場

上辰野

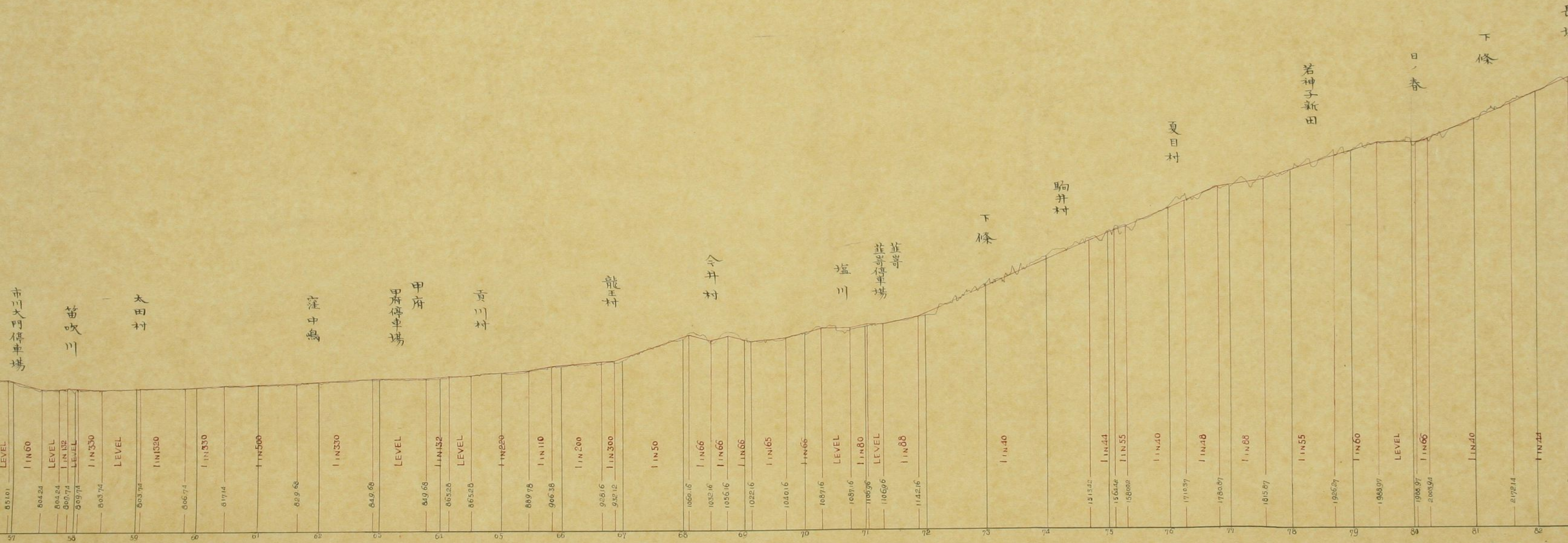
小野  
小野停車場

善子島塚

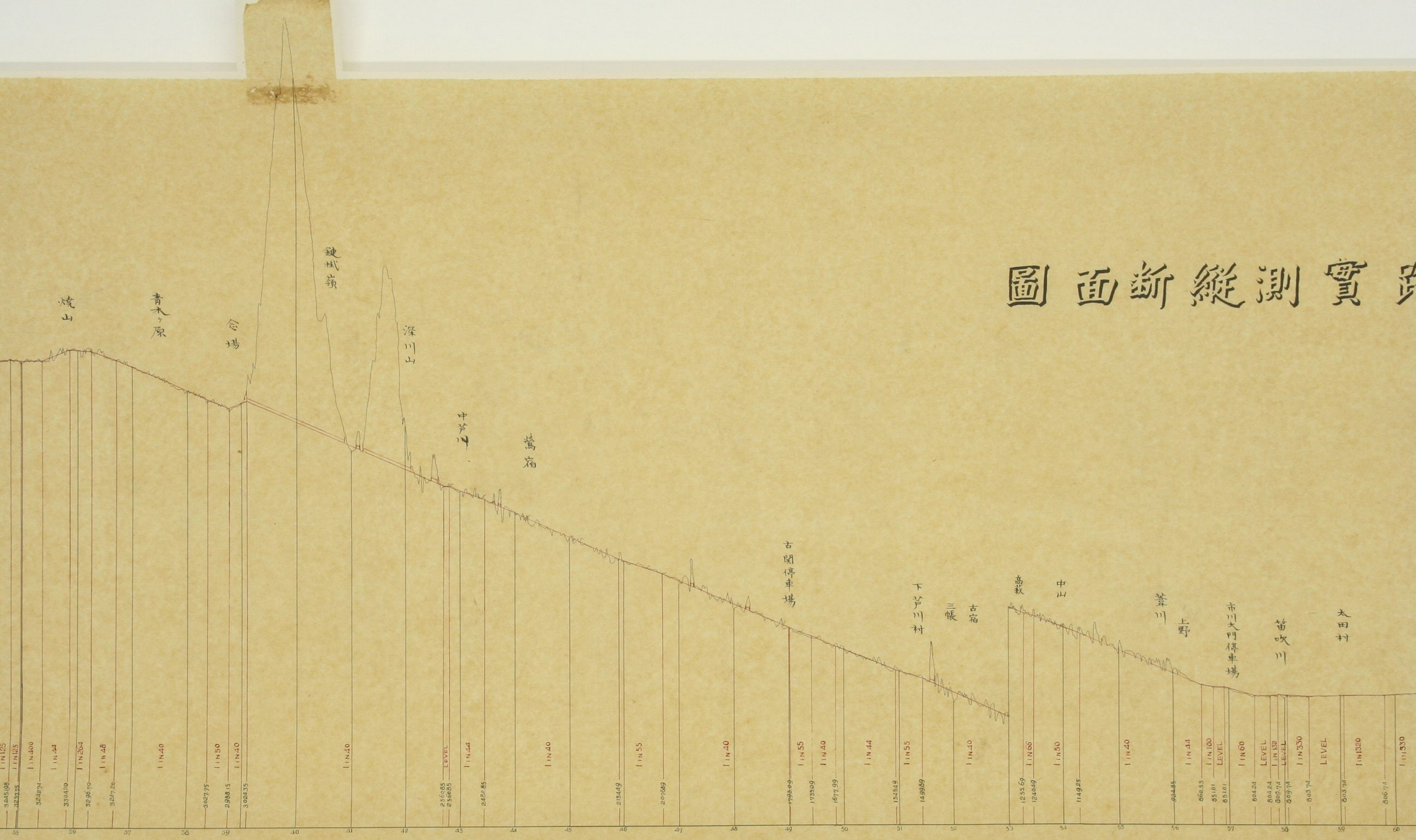
2093.24 1 IN 88  
 2156.684 LEVEL  
 2356.654 1 IN 132  
 2555.554 1 IN 66  
 2307.54 1 IN 300  
 2297.04 LEVEL  
 2491.04 1 IN 300  
 2484.88 LEVEL  
 2484.88 1 IN 100  
 2556.66 1 IN 148  
 2403.56 LEVEL  
 2403.56 1 IN 200  
 2481.98 LEVEL  
 2481.98 1 IN 200  
 2488.27 LEVEL  
 2488.27 1 IN 50  
 2655.56 1 IN 165  
 2495.38 LEVEL  
 2495.38 1 IN 200  
 2515.18 1 IN 132  
 2487.25 LEVEL  
 2487.25 1 IN 600  
 2487.25 1 IN 165  
 2487.25 1 IN 55  
 2487.25 1 IN 55  
 2443.53 1 IN 100  
 2443.53 LEVEL  
 2443.53 1 IN 100  
 2443.53 1 IN 66  
 2443.53 LEVEL  
 2443.53 1 IN 66  
 2605.91 1 IN 165  
 2626.11 1 IN 48  
 2578.38 1 IN 88  
 2601.61 1 IN 50  
 2646.86 LEVEL  
 2646.86 1 IN 75  
 2682.46 1 IN 40  
 2758.16 1 IN 88  
 2764.66 1 IN 40  
 2682.46 LEVEL  
 2682.46 1 IN 40  
 2672.78 1 IN 66  
 2657.78 LEVEL  
 2657.78 1 IN 40  
 2568.53 LEVEL  
 2568.53 1 IN 40

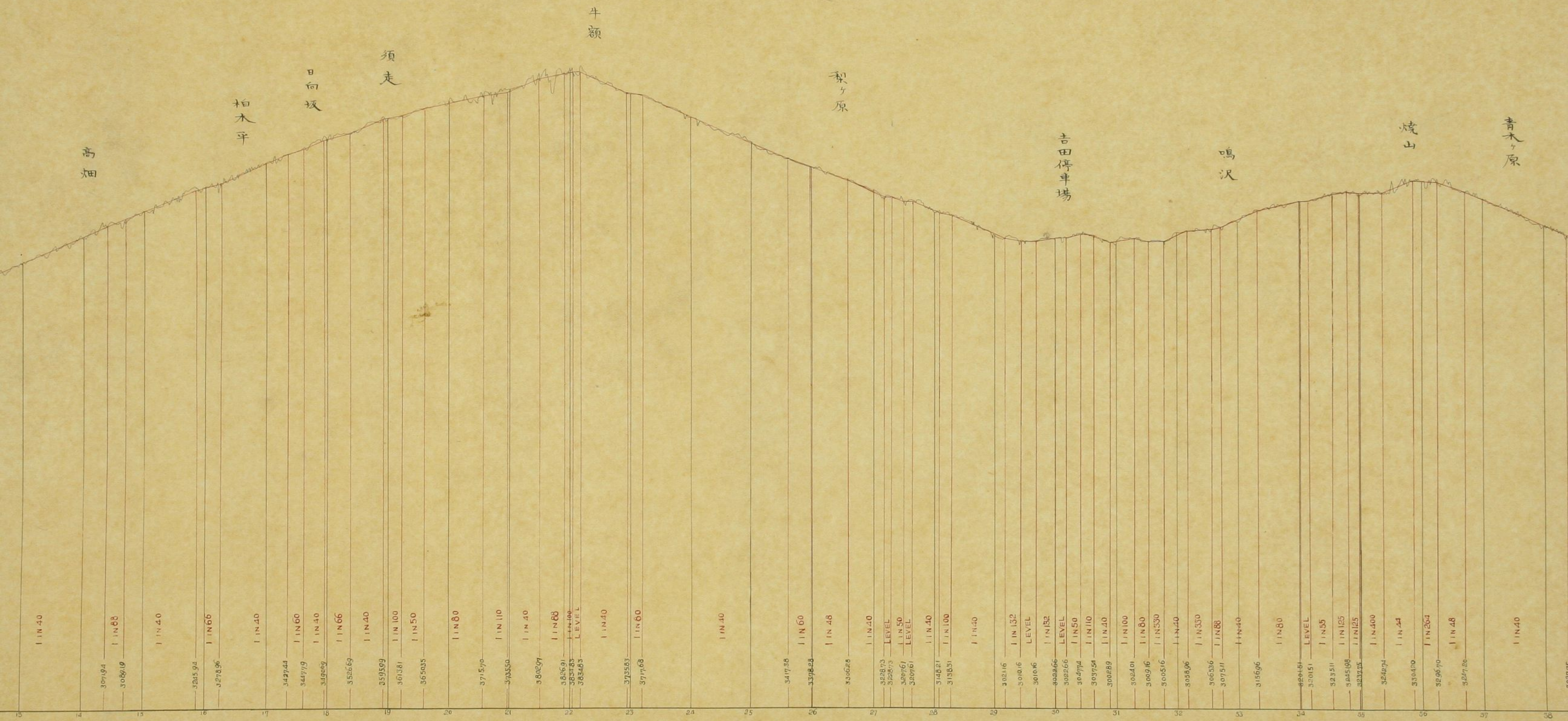


# 甲信鐵道線路實測圖



# 實測縱断面圖





高畑

柏木平

日向坂

須走

牛額

梨ヶ原

吉田停車場

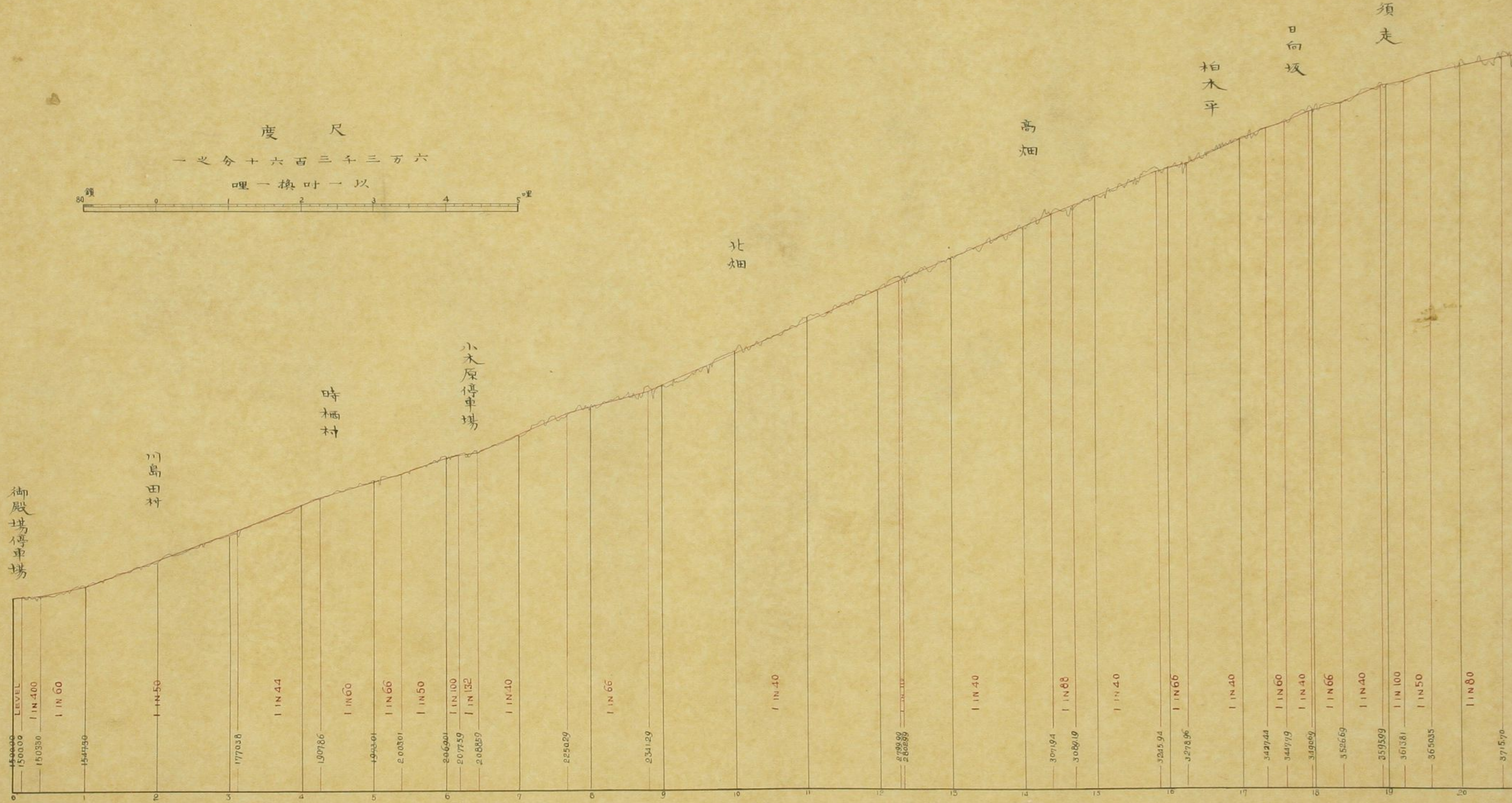
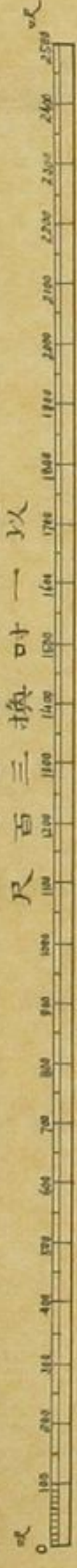
鳴沢

焼山

青木ヶ原

15	1 IN 40	
14	307194	1 IN 68
13	308910	
12		1 IN 40
11	321594	1 IN 66
10	327896	
9		1 IN 40
8	342744	1 IN 60
7	344779	1 IN 40
6	349669	1 IN 66
5	352669	1 IN 40
4	359569	1 IN 100
3	361381	1 IN 50
2	365035	
1		1 IN 80
21	371570	1 IN 110
20	370550	
19	380097	1 IN 40
18	385691	1 IN 68
17	385183	LEVEL
16	383483	LEVEL
15		1 IN 40
14	379583	1 IN 60
13	377768	
12		1 IN 40
11	341736	1 IN 60
10	337828	1 IN 48
9	336228	
8		1 IN 40
7	329873	LEVEL
6	322873	LEVEL
5	320761	1 IN 50
4	320761	LEVEL
3		1 IN 40
2	314821	1 IN 100
1	313831	
29		1 IN 40
28	305116	1 IN 132
27	301016	LEVEL
26	301016	LEVEL
25		1 IN 82
24	302266	LEVEL
23	302266	LEVEL
22	304774	1 IN 50
21	303754	1 IN 110
20	300289	1 IN 40
19	302401	1 IN 100
18	300916	1 IN 80
17	300516	1 IN 530
16		1 IN 40
15	305896	
14	305336	1 IN 350
13	307511	1 IN 88
12		1 IN 40
11	315696	
10		1 IN 80
9	320151	LEVEL
8	320151	LEVEL
7		1 IN 55
6	323511	1 IN 125
5	324598	1 IN 125
4	323275	1 IN 125
3		1 IN 400
2	324274	
1		1 IN 44
36	330450	1 IN 264
35	329670	
34		1 IN 48
33	327720	
32		1 IN 40

三以  
六千一  
百六  
尺之三  
分一



度 尺  
一之分十六百三千三万六  
哩一換吋一以