

きかは便郵



宛名人の宿所は宛名よりも大書すへし

此の表面には宿所姓名を限り認むへし

西村
向島
清山又同
向島
所一三九

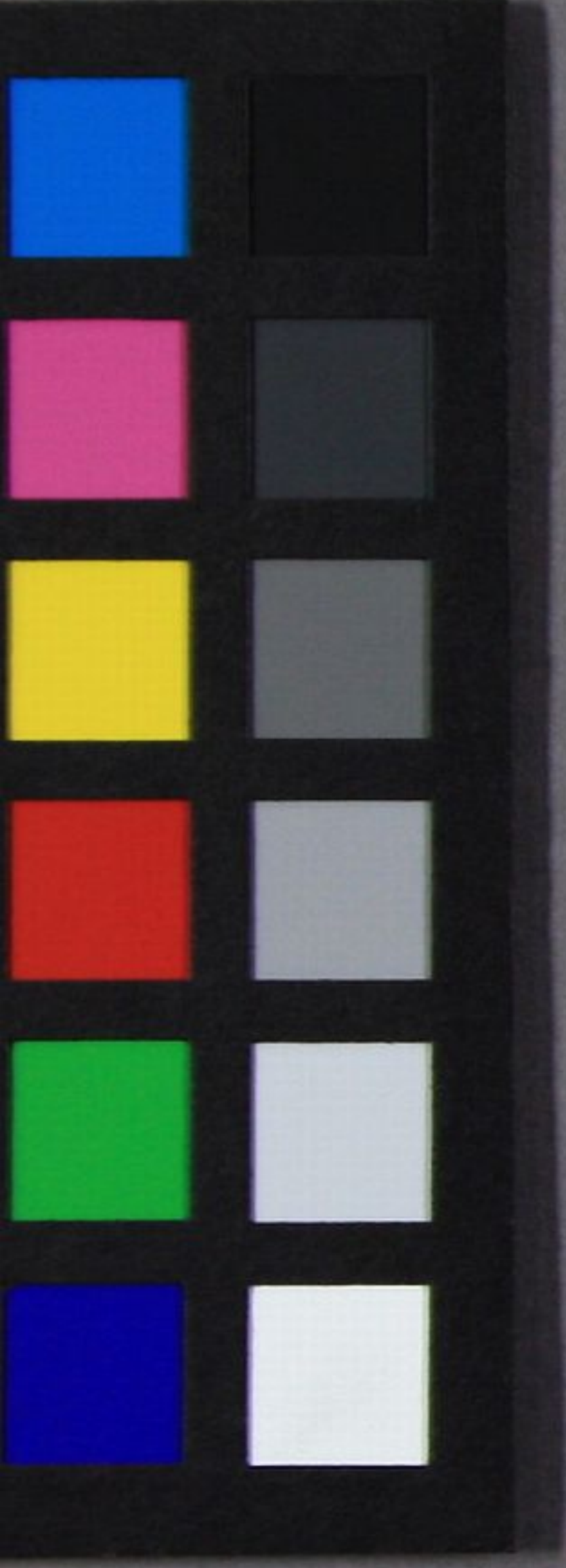
向島
所一三九



逓信局刷印府政國帝新日大

E141





Handwritten text in a cursive script, possibly Chinese or Japanese, on aged paper. The text is arranged in four vertical columns, reading from right to left. The characters are highly stylized and difficult to decipher. The paper shows signs of age, including yellowing and some staining.

