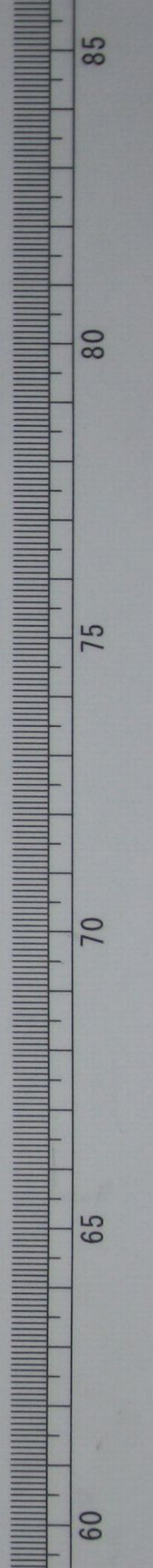


當りし杖右之助は、
名守三根、
越之守種成、
一原、
中務、
而も、
三根、
伴、
公、

14
3157
105
(25)



Handwritten text on the right edge of the page, partially cut off.

Handwritten text on the right side of the page.

Handwritten text on the right side of the page.

Handwritten text on the right side of the page.

Handwritten text on the right side of the page.

Handwritten text on the right side of the page.

Handwritten text on the right side of the page.

Handwritten text on the right side of the page.

Handwritten text on the right side of the page.

Handwritten text on the right side of the page.

Handwritten text on the right side of the page.

Handwritten text on the right side of the page.

Handwritten text on the right side of the page.

Handwritten text on the right side of the page.

Handwritten text in a cursive script, likely a continuation from the reverse side of the page.

Handwritten text in a cursive script, likely a continuation from the reverse side of the page.

Handwritten text in a cursive script, likely a continuation from the reverse side of the page.

Handwritten text in a cursive script, likely a continuation from the reverse side of the page.

Handwritten text in a cursive script, likely a continuation from the reverse side of the page.

Handwritten text in a cursive script, likely a continuation from the reverse side of the page.

Handwritten text in a cursive script, likely a continuation from the reverse side of the page.

Handwritten text in a cursive script, likely a continuation from the reverse side of the page.

Handwritten text in a cursive script, likely a continuation from the reverse side of the page.

Handwritten text in a cursive script, likely a continuation from the reverse side of the page.

Handwritten text in a cursive script, likely a continuation from the reverse side of the page.

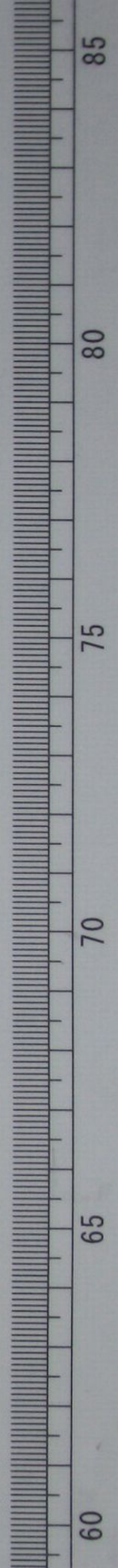
Handwritten text in a cursive script, likely a continuation from the reverse side of the page.

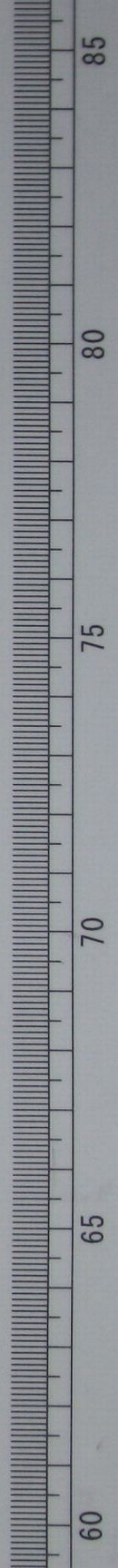


Handwritten text in Chinese characters, arranged in vertical columns. The text appears to be a historical record or official document, written in a cursive style. The characters are dense and difficult to decipher without context, but they follow a traditional right-to-left, top-to-bottom layout.



大丸
七五
酒

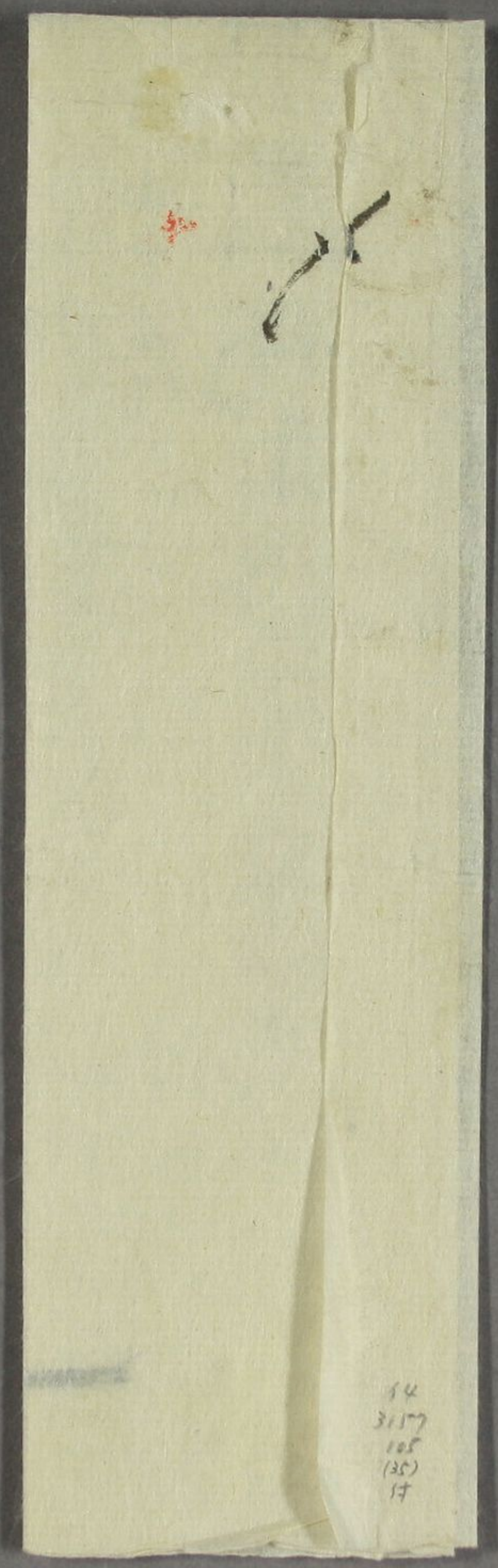




松原通三

大丸

海老



41
(35)
501
L113
71

