



















室町

空里寺

角

舟人  
星景輝次郎



大和田

田

空里寺の  
婿賊  
重云



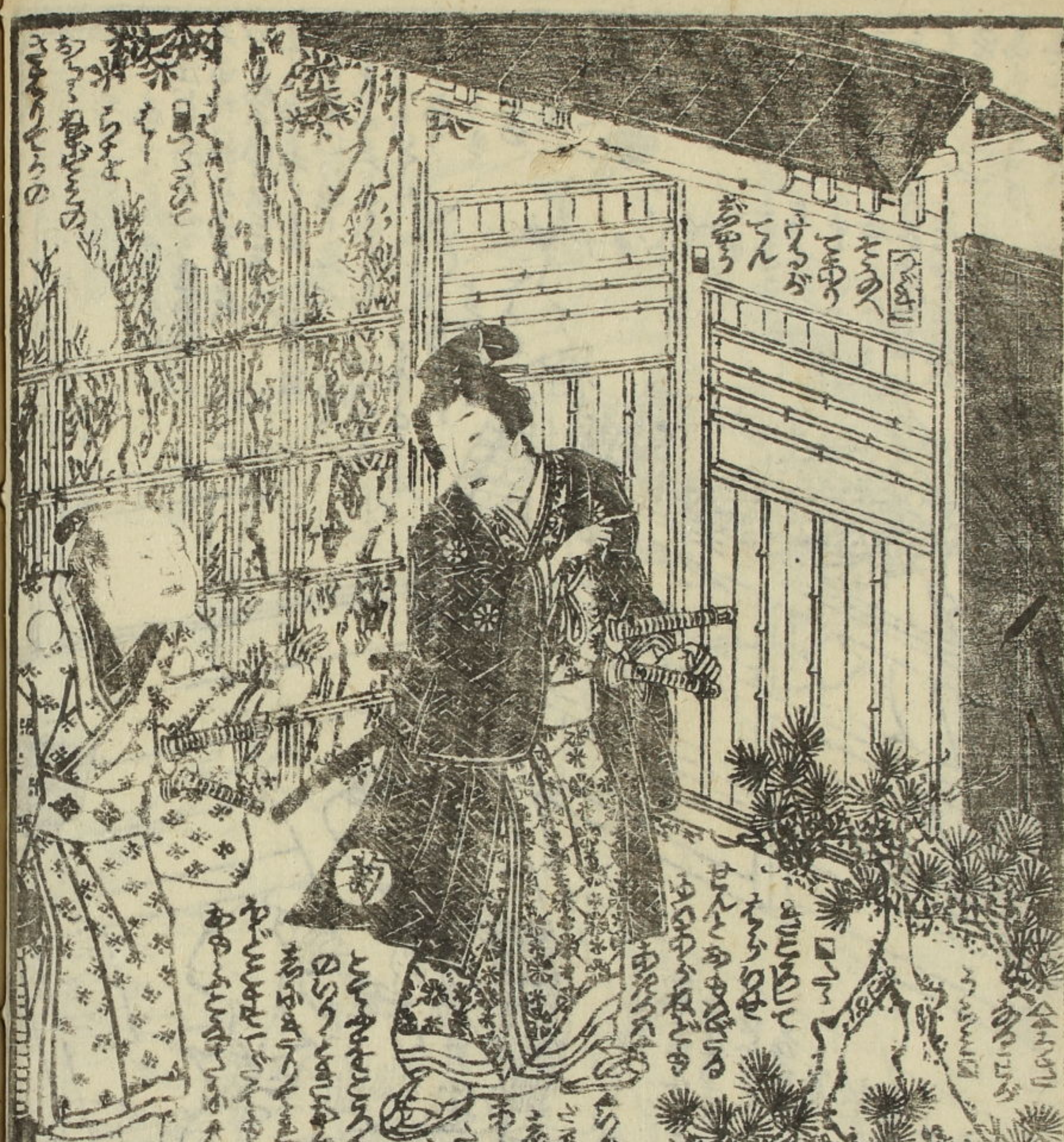




Handwritten text in a cursive script, likely a form of shorthand or a specific dialect. The text is arranged in vertical columns, with some lines crossing the gutter between pages. The script is dense and difficult to decipher without a key.

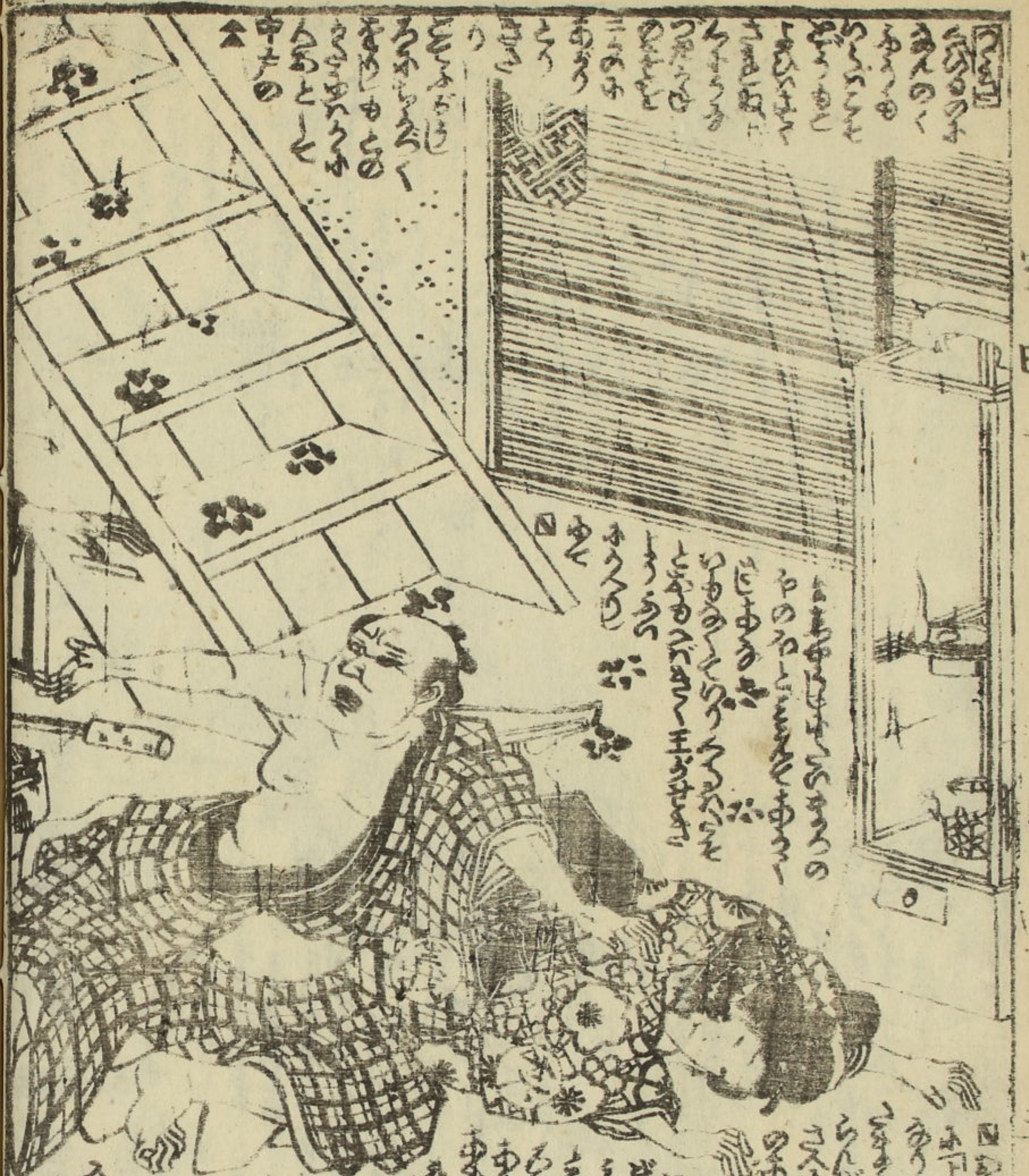


Handwritten text in a cursive script, similar to the left page. The text is arranged in vertical columns. There are some larger characters or symbols interspersed within the columns, possibly indicating specific words or phrases. The script is dense and difficult to decipher without a key.





Handwritten text in the upper right section of the right page, including the characters '二' and '三'.



Handwritten text in the lower right section of the right page.

Handwritten text in the upper left section of the left page, including the characters '一' and '二'.



Handwritten text in the lower left section of the left page.







Handwritten text in vertical columns, likely a narrative or commentary, surrounding the illustration on the right page.



Handwritten text in vertical columns, likely a narrative or commentary, surrounding the illustration on the left page.







五十一

七



空田









柳亭種彦作梅蝶樓國貞画

柳蔭月朝妻

十編 大尾

山々亭有人作  
梅朝樓國貞画

藪黃鸝八幡不知

十編 大尾

山々亭有人作  
錦朝樓芳帛画

阿玉ヶ池櫛月形

五編 大尾

鳥永春水作  
梅堂國貞画

八犬傳犬の奴紙

十編 大尾 柳亭作 國政画

小學行儀法

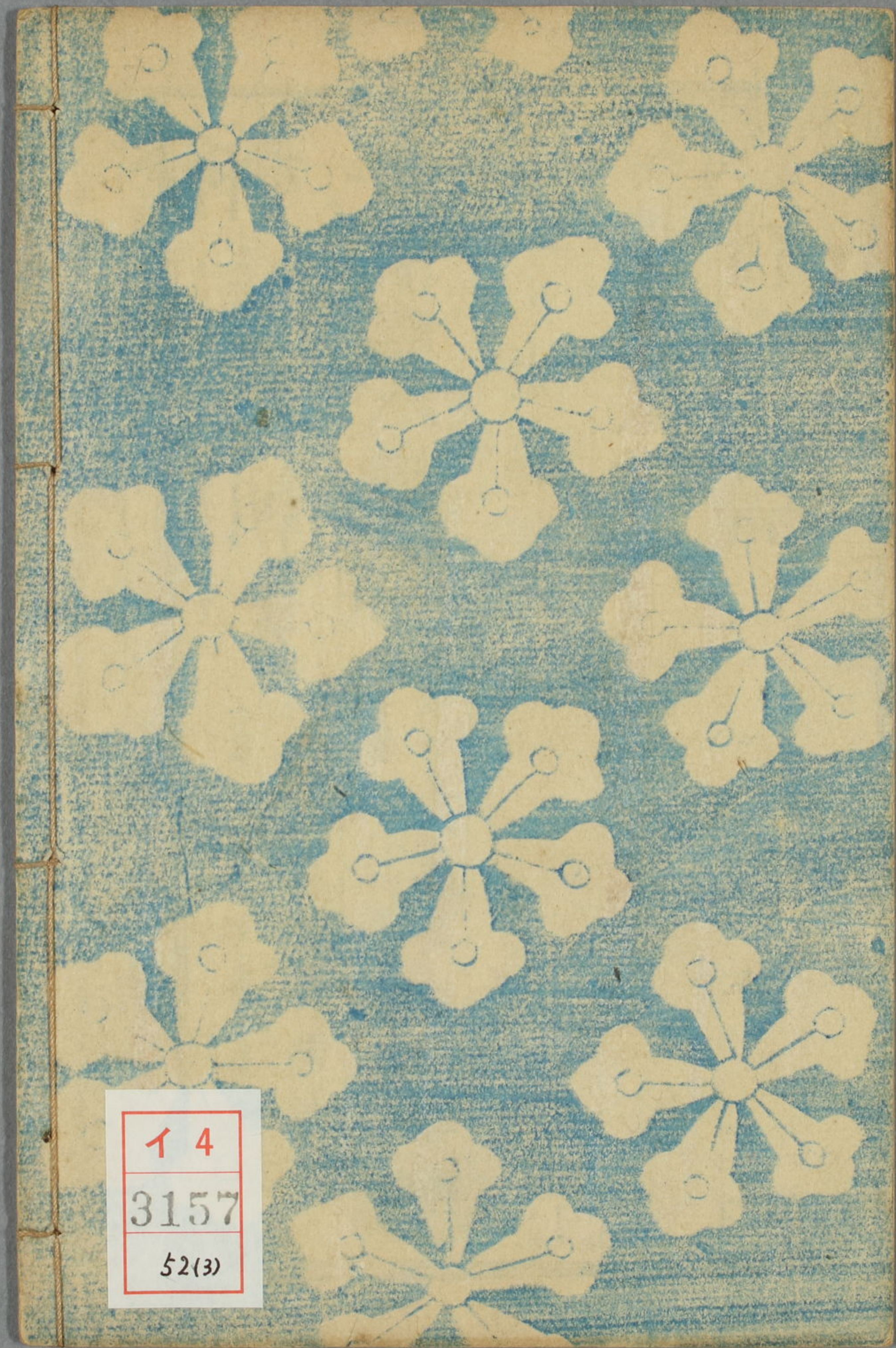
全一冊

寶母散

ふんせんさん 中橋南傳画 柳亭作

一葉堂書軒





14

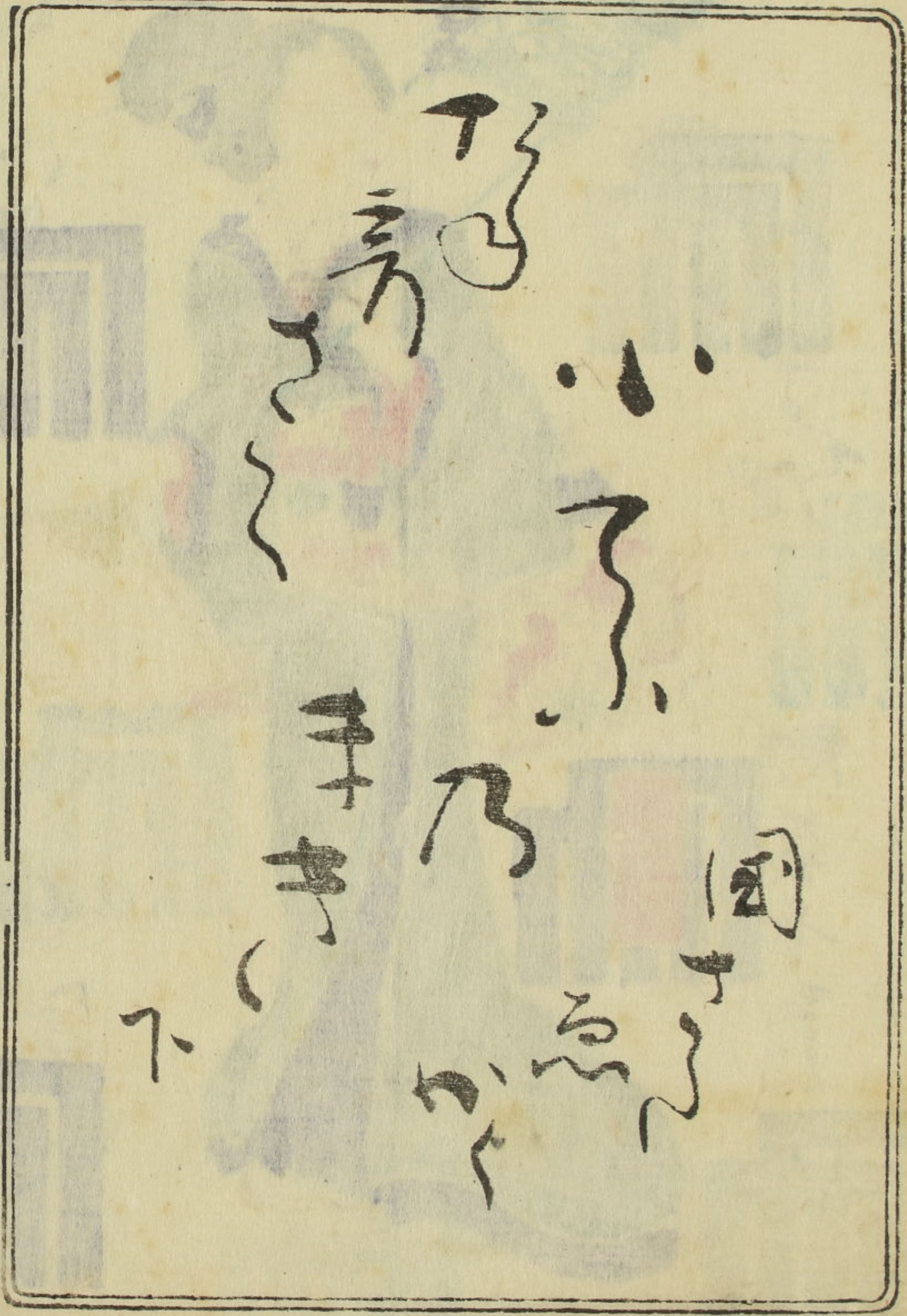
3157

52(3)





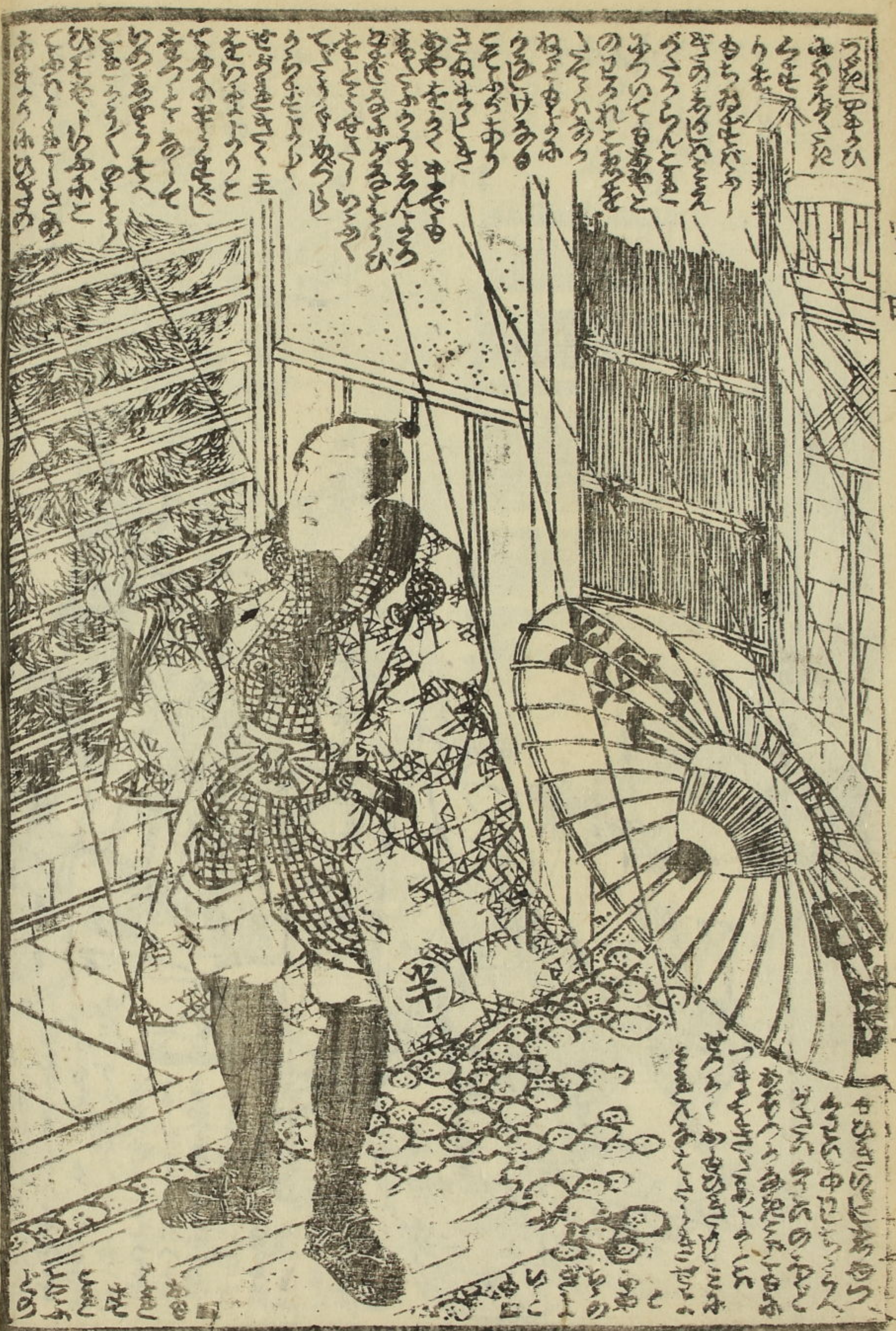
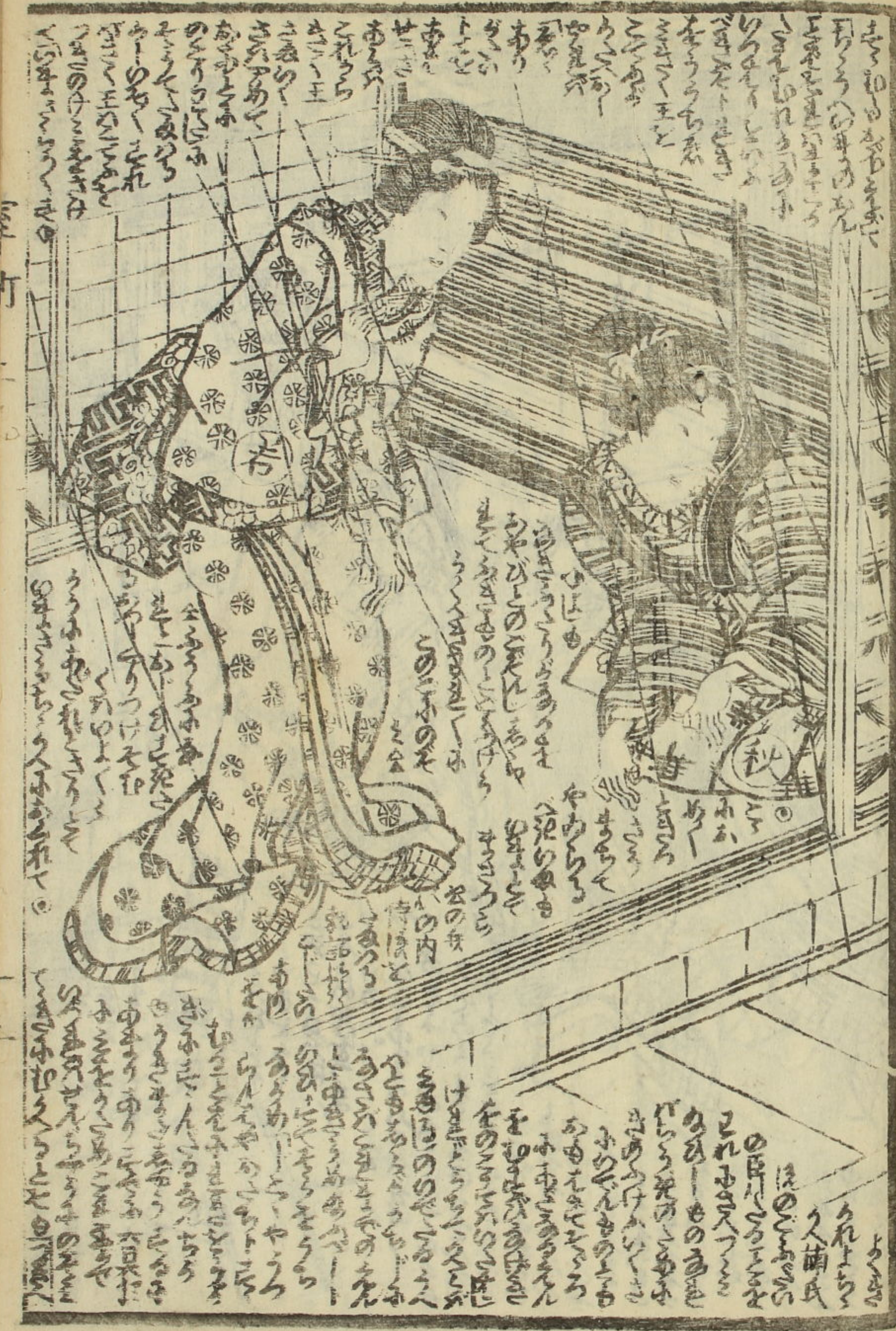
















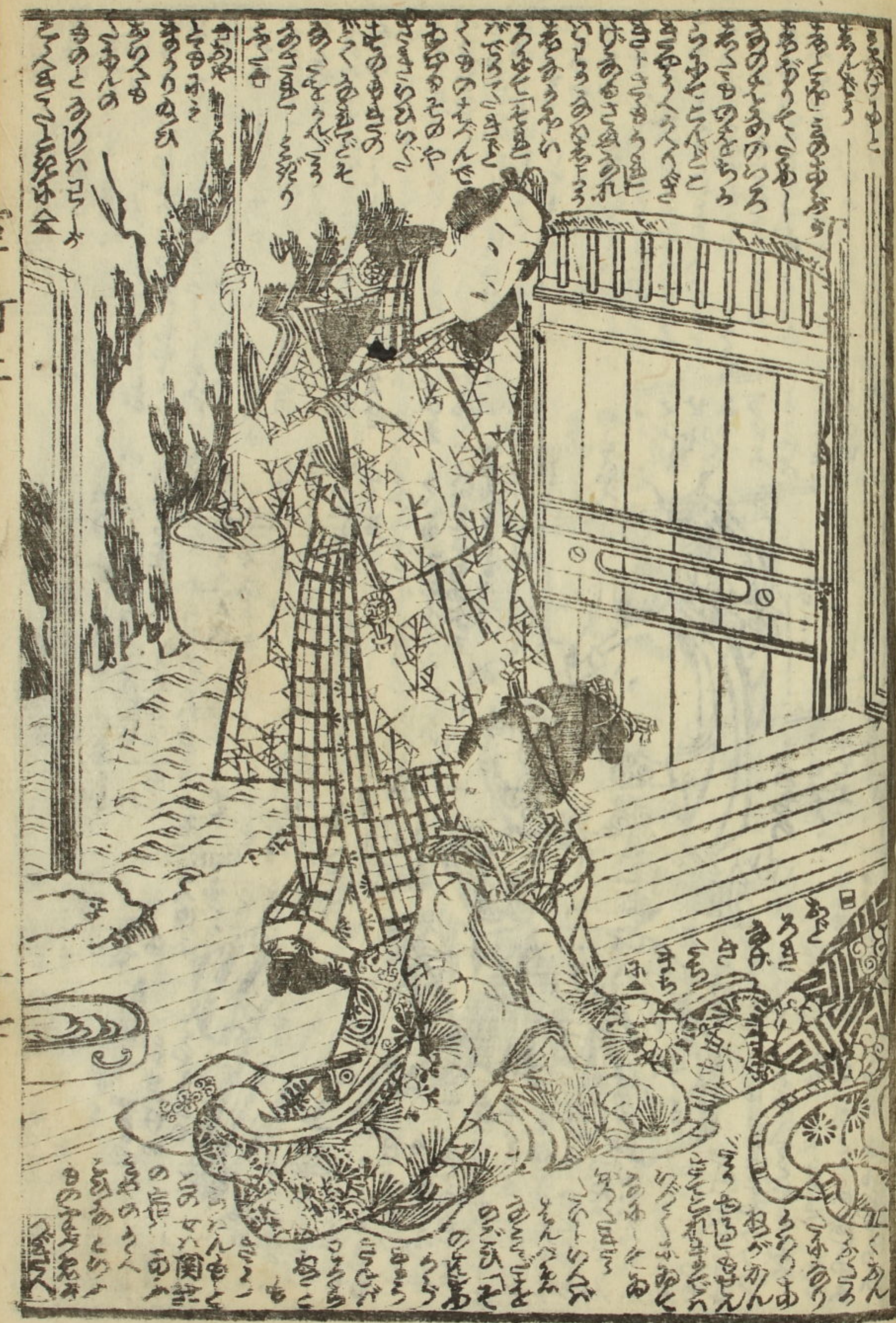
























Handwritten Japanese text in vertical columns at the top of the page, likely a title or introductory text.

Handwritten Japanese text in vertical columns on the right side of the page.

Handwritten Japanese text in vertical columns on the right side of the page, below the illustration.

Handwritten Japanese text in vertical columns on the right side of the page, below the illustration.

Handwritten Japanese text in vertical columns on the right side of the page, below the illustration.



Handwritten Japanese text in vertical columns at the top of the page, likely a title or introductory text.

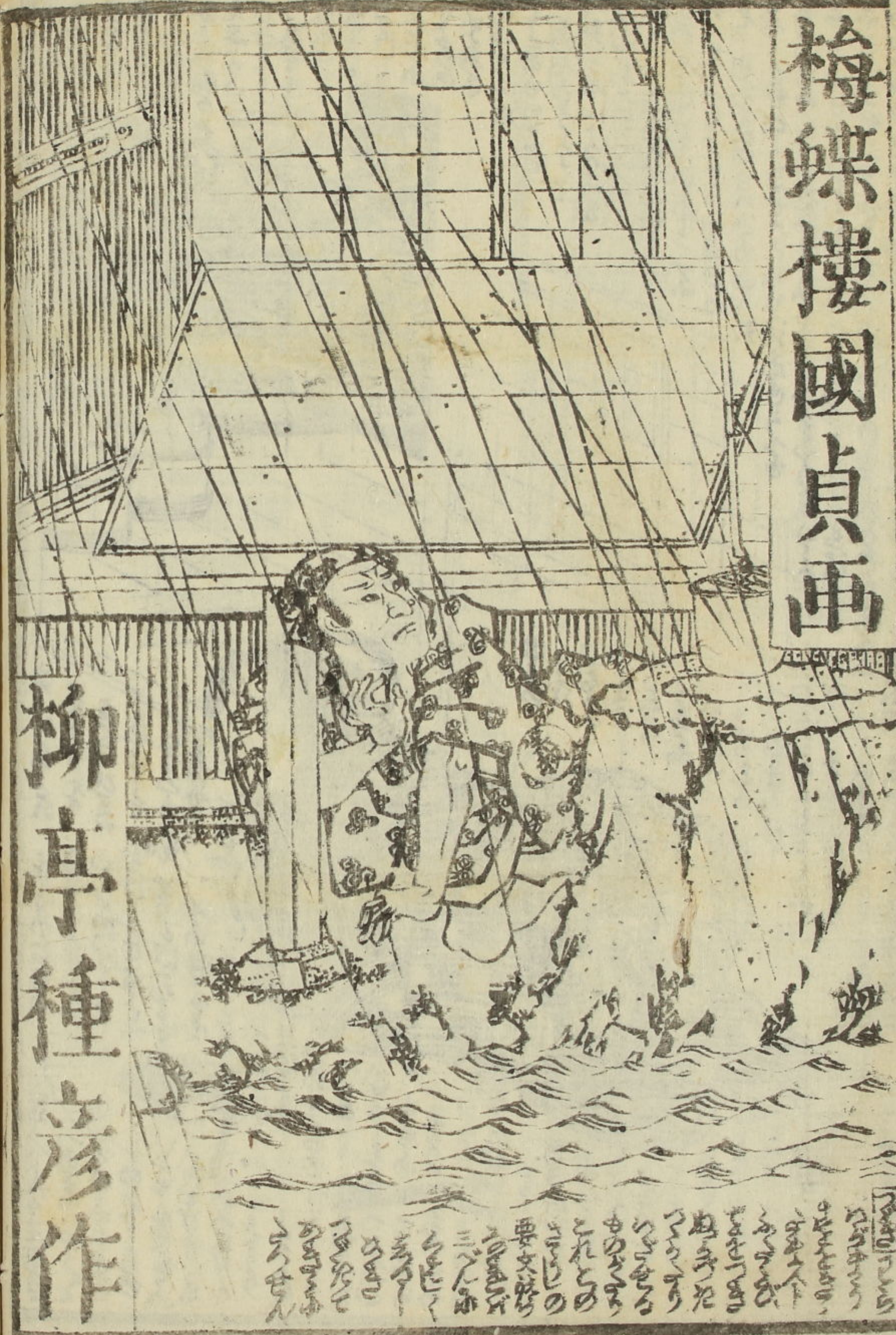
Handwritten Japanese text in vertical columns on the right side of the page, below the illustration.

Handwritten Japanese text in vertical columns on the right side of the page, below the illustration.

Handwritten Japanese text in vertical columns on the right side of the page, below the illustration.



# 梅蝶樓國貞画



# 柳亭種彦作

此は梅蝶樓國貞の画也  
 柳亭種彦の作也  
 此は梅蝶樓國貞の画也  
 柳亭種彦の作也  
 此は梅蝶樓國貞の画也  
 柳亭種彦の作也

厚化粧萬年嶋田

九編 春水作 八尾 國貞画

新島九尾傳

九編 春水作 八尾 國貞画

室町源氏胡蝶卷

三編 種彦作 大尾 國貞画

筆海四國聞書

十五編 種彦作 大尾 國貞画

鼠洞通夜譚

十編 種彦作 大尾 國貞画

月鴉墨画廻滿櫛

九編 種彦作 大尾 國貞画

童謡妙々車

二十編 種彦作 大尾 國貞画

花封舊玉章

十編 種彦作 大尾 國貞画

薄倖幻日記

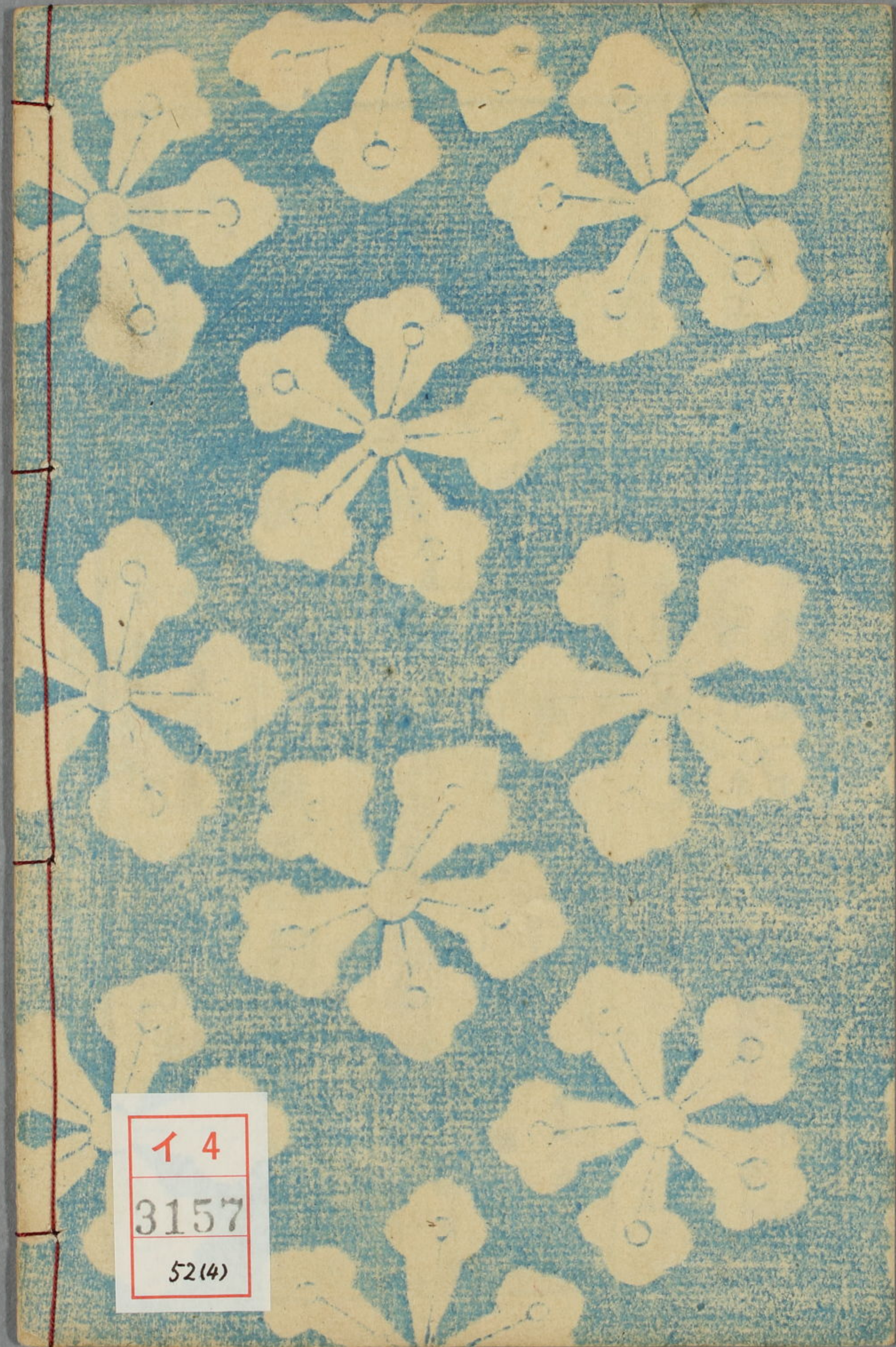
三十編 春水作 大尾 國貞画

七幼子島節譚

十五編 種彦作 大尾 國貞画

京橋區南傳馬町壹丁目二番地  
 出板  
 林 吉 藏





14
3157
52(4)