



淺間
獄
指

14
3157
51(12)



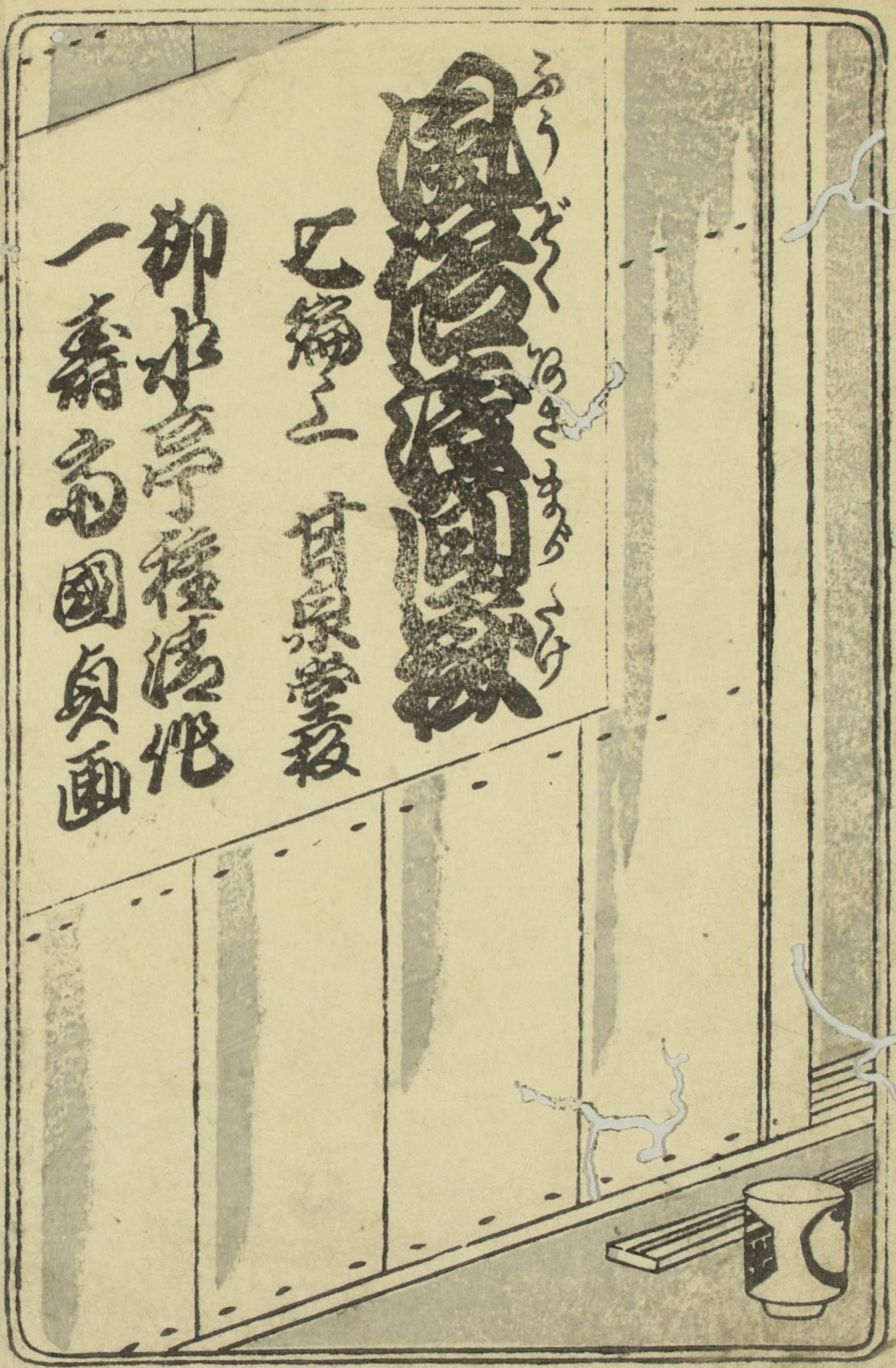


14
3157
51
(12)

柳水亭後法代

一壽高國貞画

乙編二 甘泉堂板

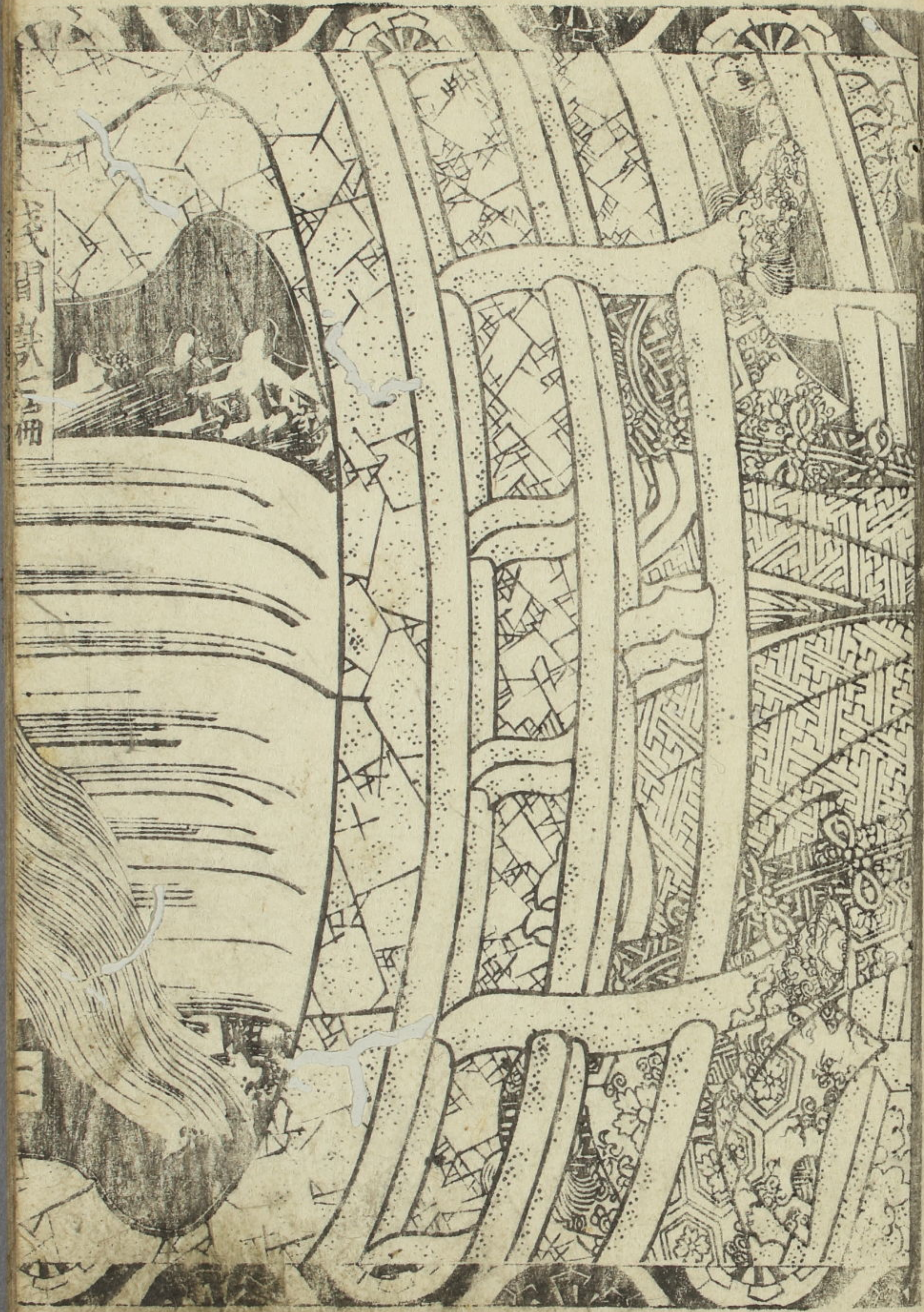


初雪や炭のゆくも白く清く... 雪と炭と雲泥あふふ... 新院を天狗ふ文で... 大なる是れ過つる... 稱まふ至る... 怪談あらん... 時鳥と瞿... 無上道ふ住せん... 魂も怨と現せ... も臆懐と...

柳水亭後清



七



浅間山二冊



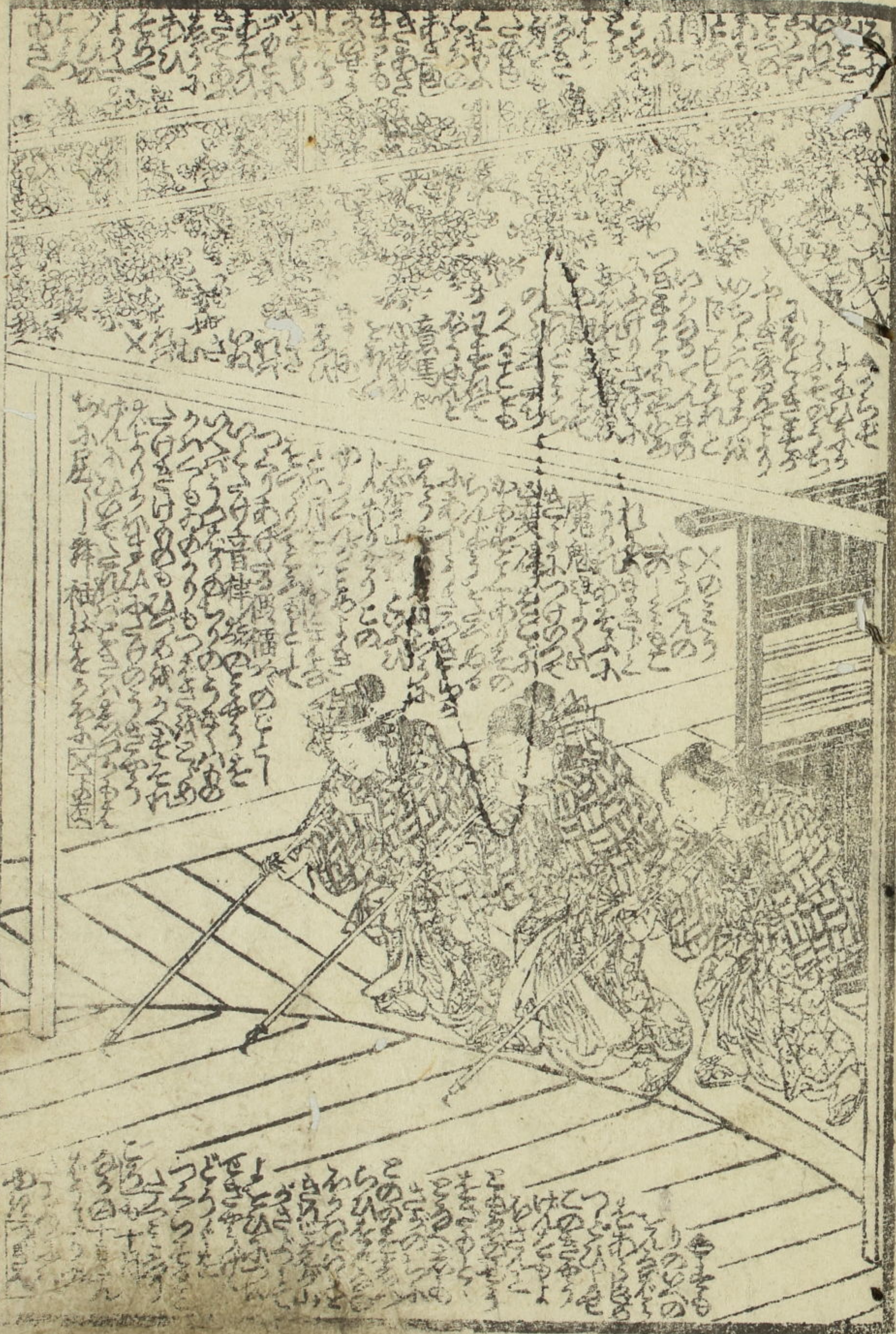
浅間山之極良治

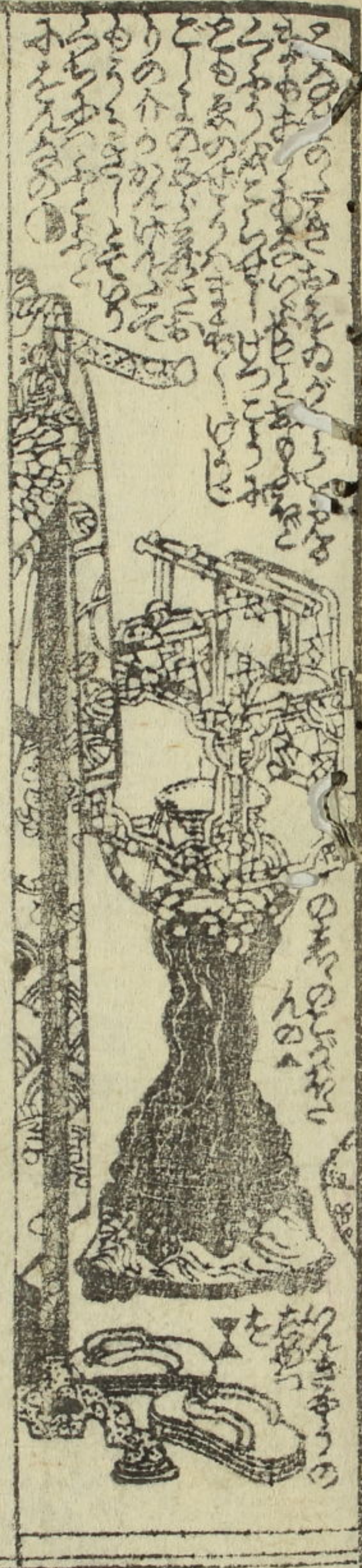
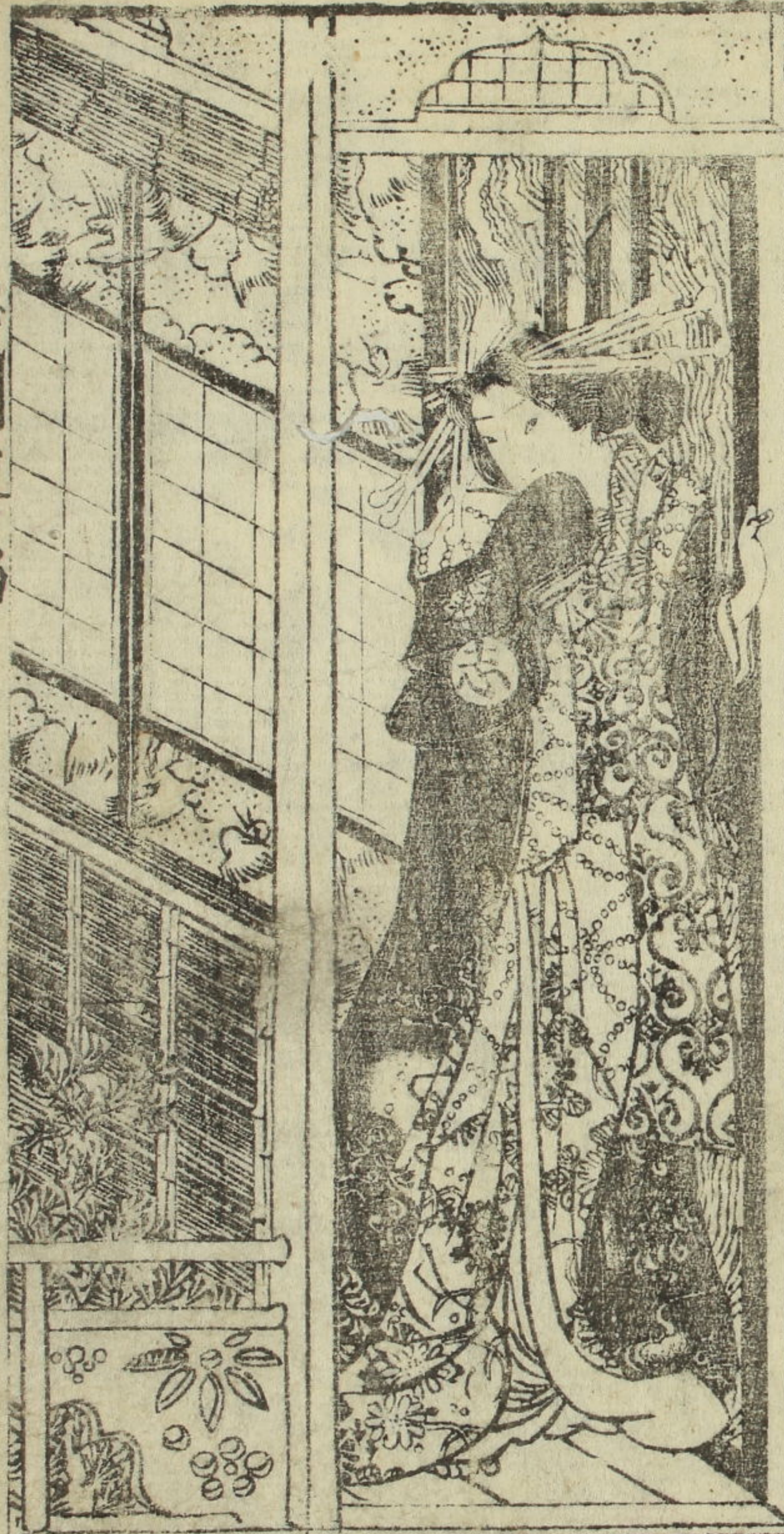


花門大正



遊君志賀大夫





Vertical text at the bottom left of the page, likely a caption or description for the illustration above.

Small decorative text or signature at the bottom center of the page.



Vertical text at the top left of the page, likely a caption or description for the illustration above.

Vertical text on the left side of the illustration, likely a caption or description for the illustration above.

Vertical text at the bottom left of the illustration, likely a caption or description for the illustration above.

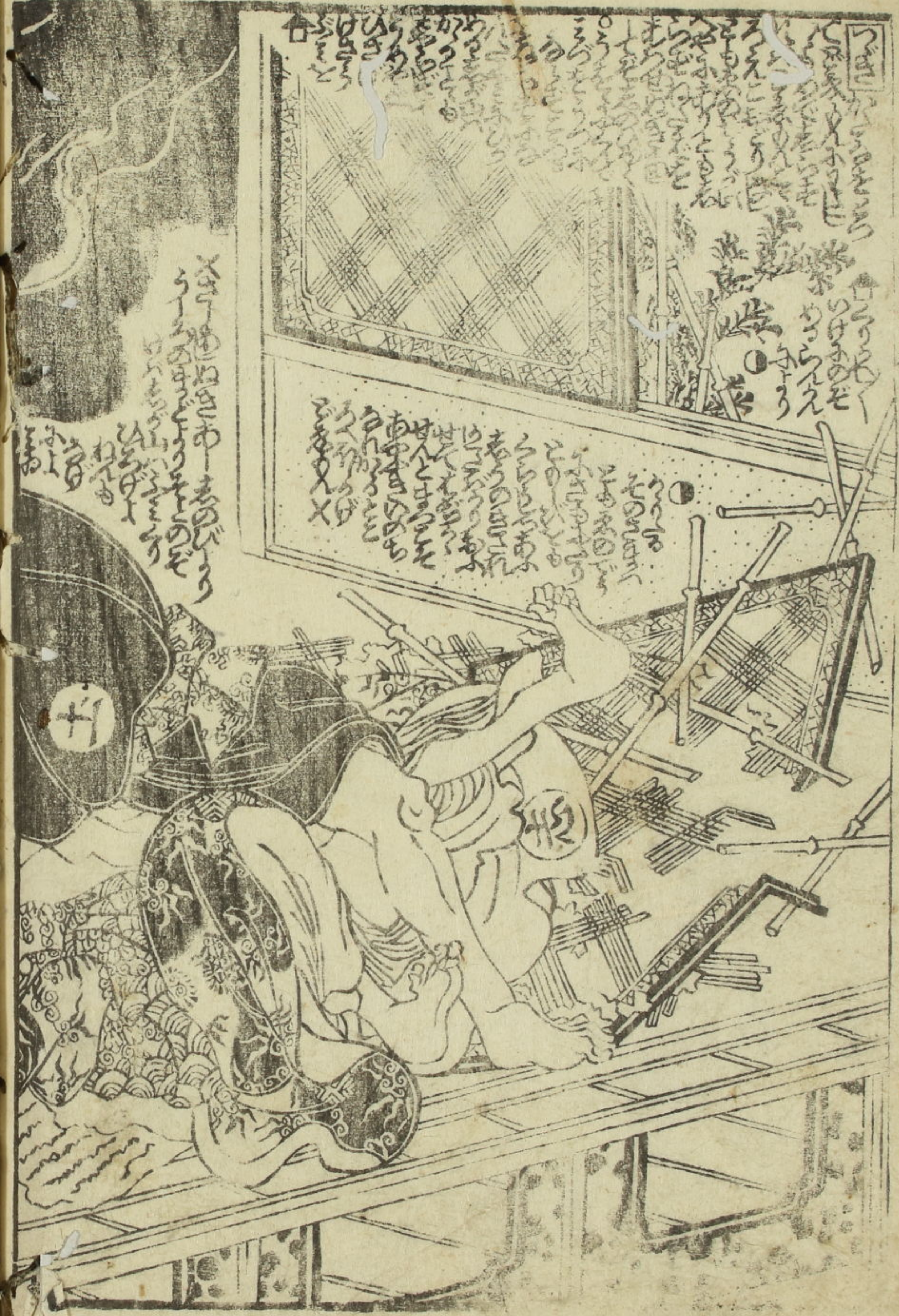




Vertical text on the left side of the page, likely a chapter or section title.

Text block located near the woman's head, possibly a name or a short dialogue.

Text block located near the man on the floor, possibly a name or a short dialogue.



Text block located near the man's head, possibly a name or a short dialogue.

Text block located near the window, possibly a name or a short dialogue.

Text block located near the man's feet, possibly a name or a short dialogue.



慶應二寅歲新春刊行

女郎花五色石臺

曲亭馬琴作
一陽齋豐國画

初編ヨリ十編迄大尾

黄金水大盞盃

爲永春水作
一壽齋國貞画

十七編十八編

滑稽道中膝栗毛

十返舎一九作
一筆庵英泉画

十編十一編



種清作
國貞画

風俗淺間嶽

柳下亭種員作
一壽齋國貞画

十四編十五編

忠臣蔵
いゝは文庫

柳煙亭種久作
一壽齋國貞画

九編十編

假名一休草紙

同作同画
十六編十七編

芝神明前
甘泉堂梓

