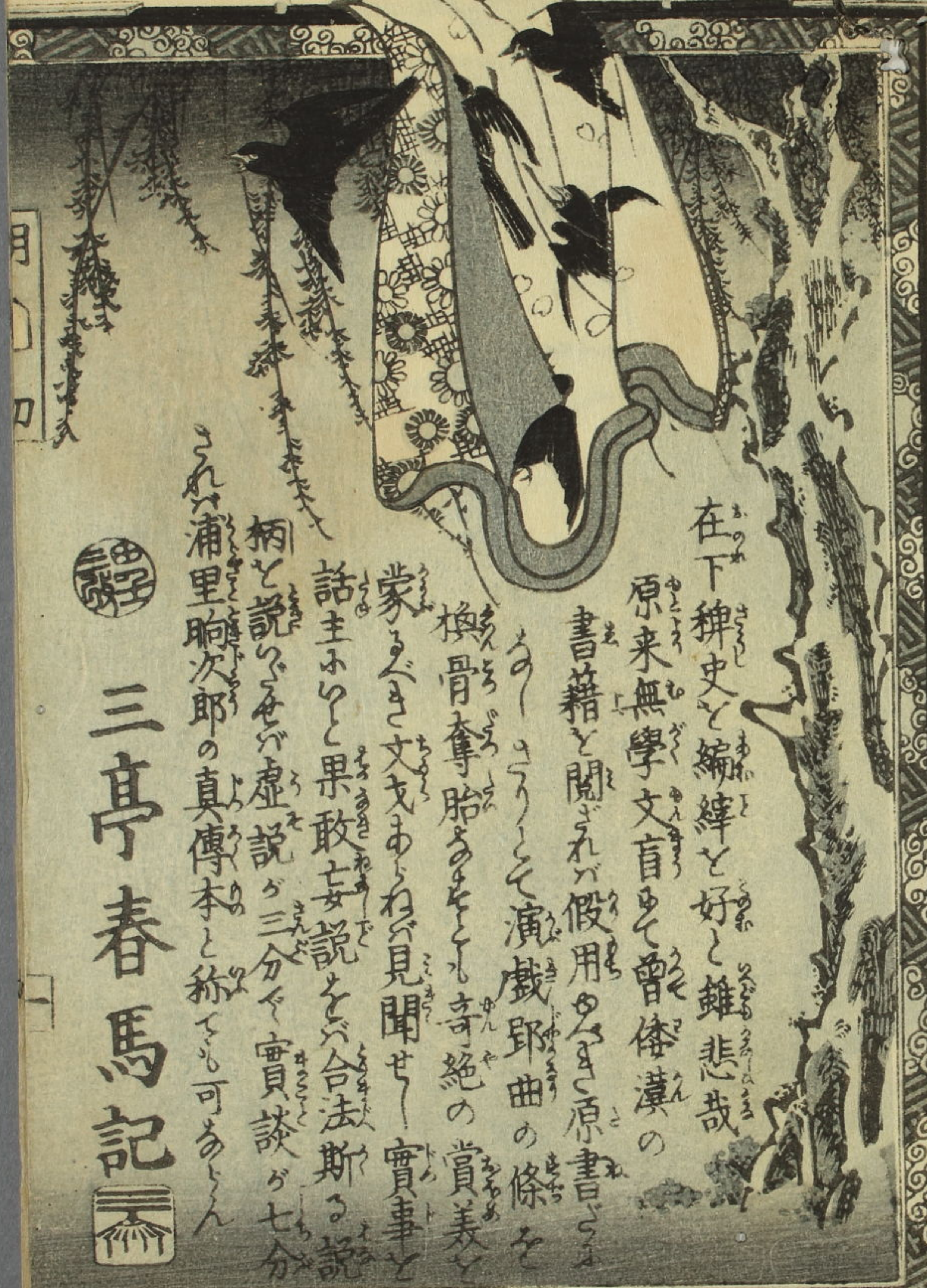




14
3157
49
(1)



月
口

在下神史と編緯と好と雖悲哉

原来無學文盲と曾倭漢の

書籍と聞されれば假用ゆへに原書と

よめりて演戲即曲の條を

換骨奪胎とせしむる奇絶の賞美

蒙るべき文才ありね見聞せし實事

話主りて果敢妄説を以合法斯る説

柄と説りてを虚説が三分を實談が七分

これ浦里响次郎の真傳本と稱すも可あらん

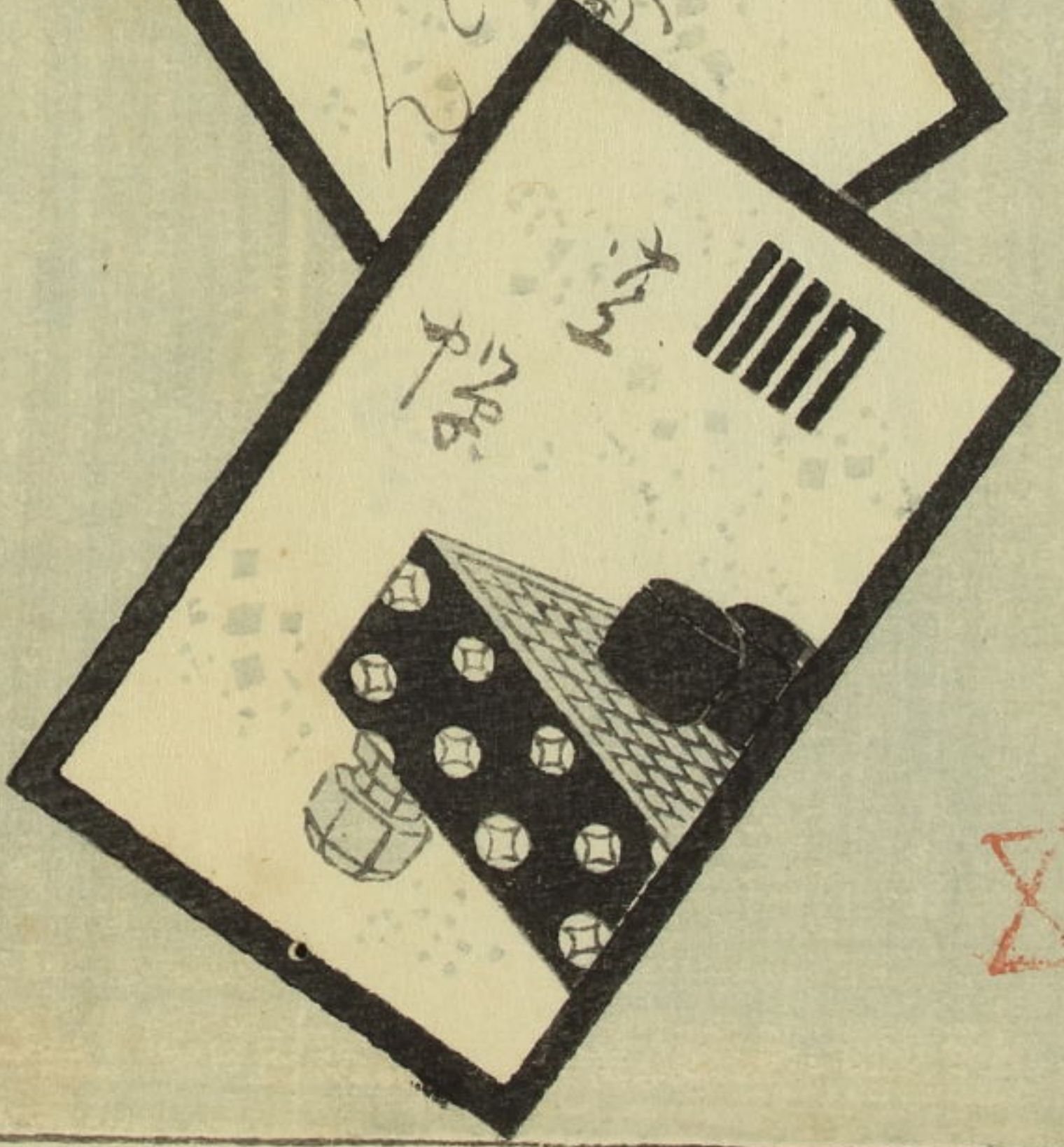


三亭春馬記



Handwritten text in a rectangular frame, including the characters '上' and '下'.

Handwritten text in a tilted rectangular frame.



明
導
切

响田治郎太郎
廓人時次郎と畧称

奥
時次郎の
女



旭
東
の
橋
の
影
を
み

四郎平の娘お浦
後小遊君浦里



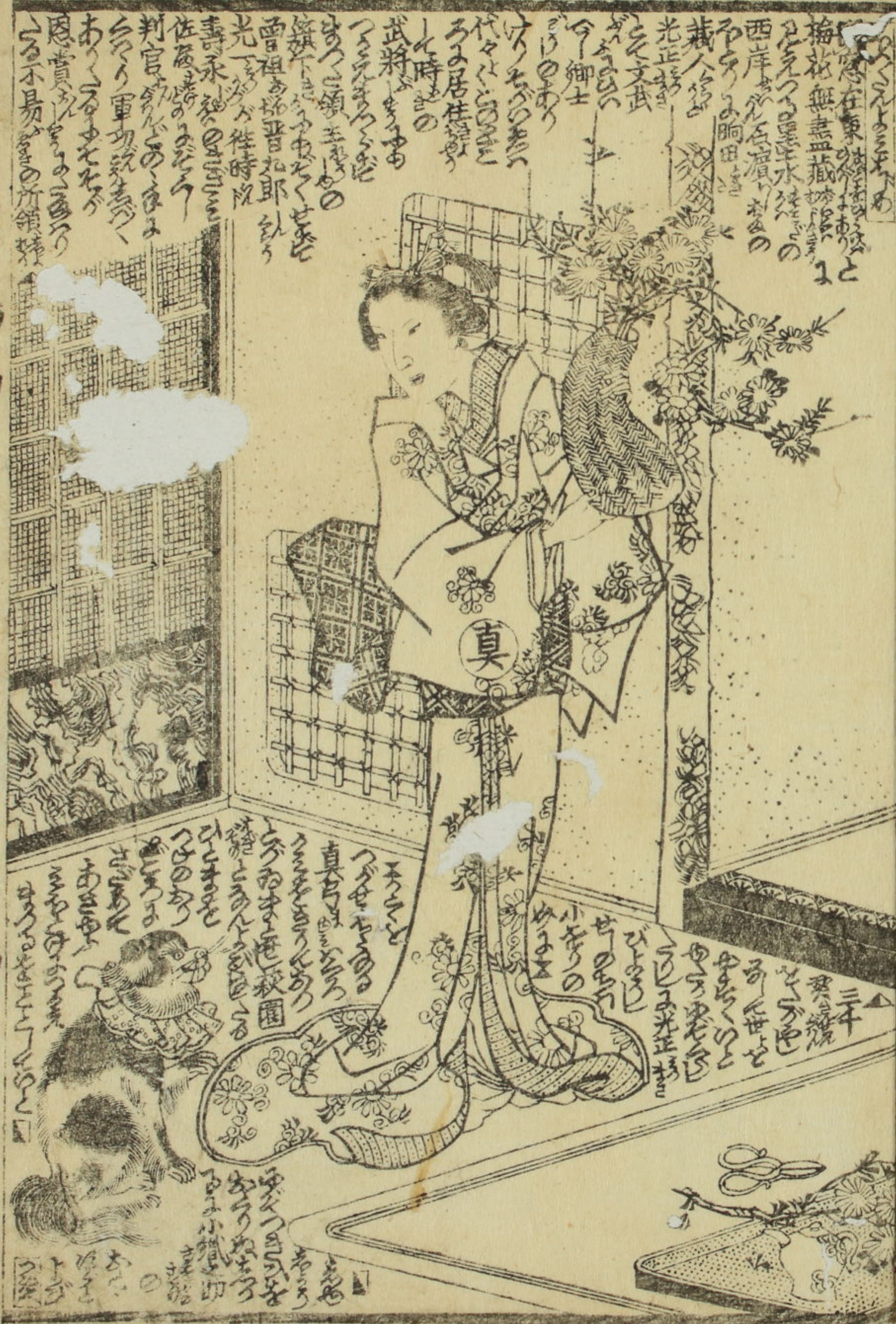


响田とよたの下部しもぶ四郎しろう平へい
 後のち小こ俠客やくかく時次ときじ郎らう



响田とよたの下部しもぶ黒平くろへい
 後のち山名やまな屋九郎やうく共とも衛ゑ

响田とよたの侍女さむらいめ渡見わたみ
 后のち小こ眉まゆ女め郎らう浦里うら



月鳥刀

梅枝無盡蔵
 西岸必石濱
 光正
 今卿士
 武將
 判官
 恩賞
 不易

三年
 真
 小
 犬



助
 小織
 朝
 花

真



Vertical columns of handwritten text in a cursive Japanese style, located above the illustration. The text is arranged in several columns, starting from the right side of the page and moving towards the left.

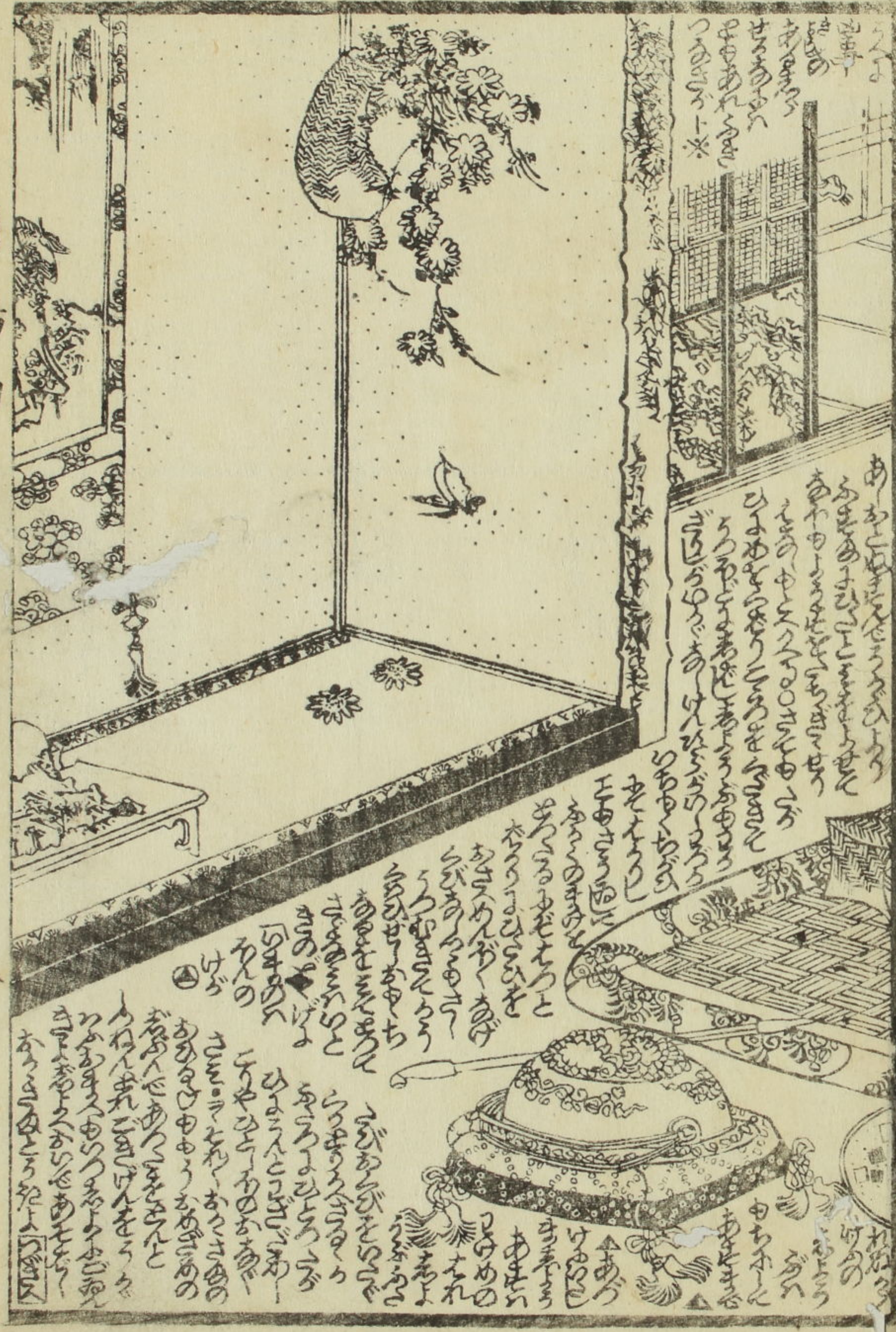
Vertical columns of handwritten text in a cursive Japanese style, located below the illustration. The text is arranged in several columns, starting from the right side of the page and moving towards the left.



Vertical columns of handwritten text in a cursive Japanese style, located above the illustration. The text is arranged in several columns, starting from the right side of the page and moving towards the left.

Vertical columns of handwritten text in a cursive Japanese style, located between the two illustrations. The text is arranged in several columns, starting from the right side of the page and moving towards the left.

Vertical columns of handwritten text in a cursive Japanese style, located below the illustration. The text is arranged in several columns, starting from the right side of the page and moving towards the left.



Handwritten text in a cursive script, likely a form of shorthand or a specific dialect, covering the entire page.



Handwritten text in a cursive script, likely a form of shorthand or a specific dialect, covering the entire page.

明雅初

春馬作



國貞画

濡衣霧雨草紙

一名霧太郎 初編五編を出版

柳亭梅彦作
梅蝶樓國貞画

東譚話宇津山苞

一名馬子教 初編五編を出版

柳亭種彦作
梅蝶樓國貞画

實母散

本家

私方実母さんの名の本が、南へんま町一丁目西へん
あじふまき亭弘く本り、丸知店へおるまきりては日丹
向未例引くつりや、おるまきりては日丹向未例引くつりや

中橋南傳馬町一丁目東へん
千葉堂孝輔製

御免 痲積湯

せんきのゆき

徳用薬所

信州上田東山堂製

せんきのゆき 一包 四十八銅
せんきのゆき 一包 廿四銅



1 4
3157
49 (1)