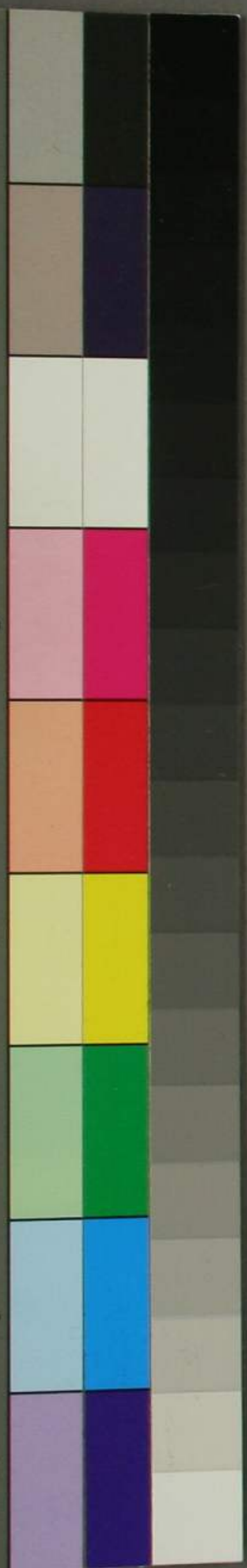


KODAK Color Control Patches © The Tiffen Company, 2000
LICENSED PRODUCT



仲譜

狭野



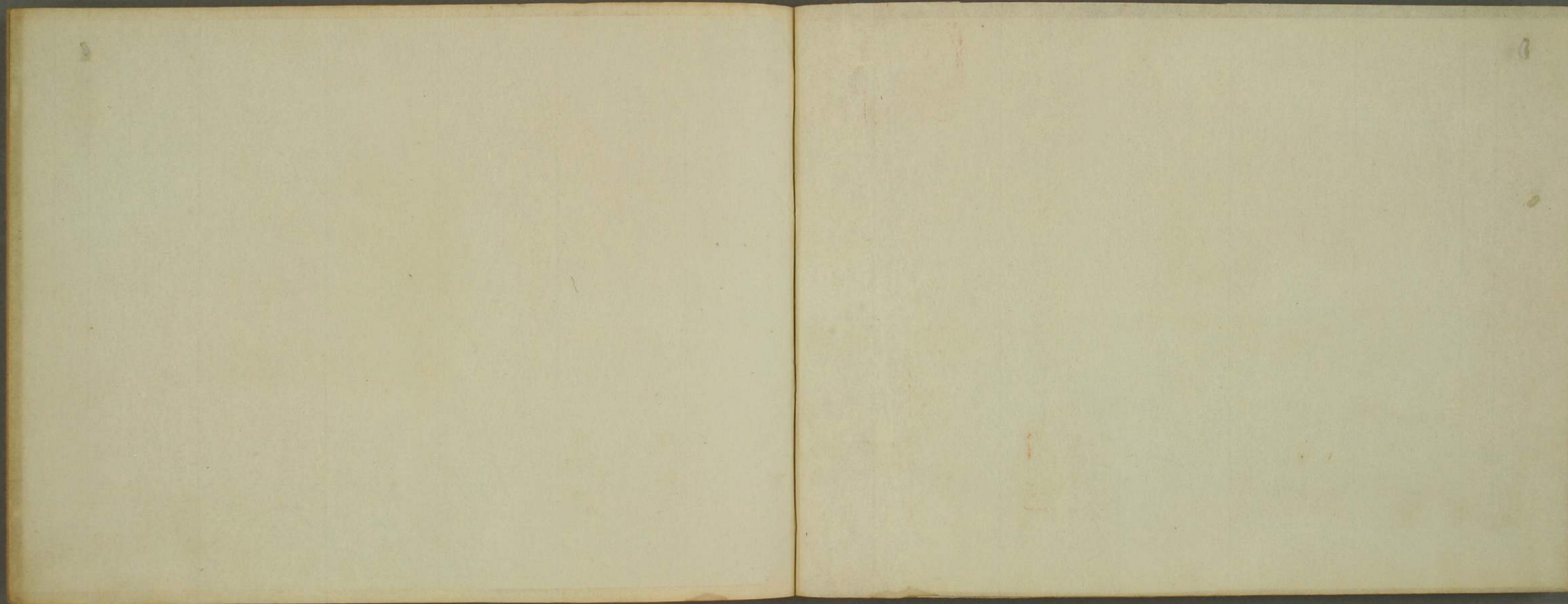
狭野資料
イ 4
3153
D 12



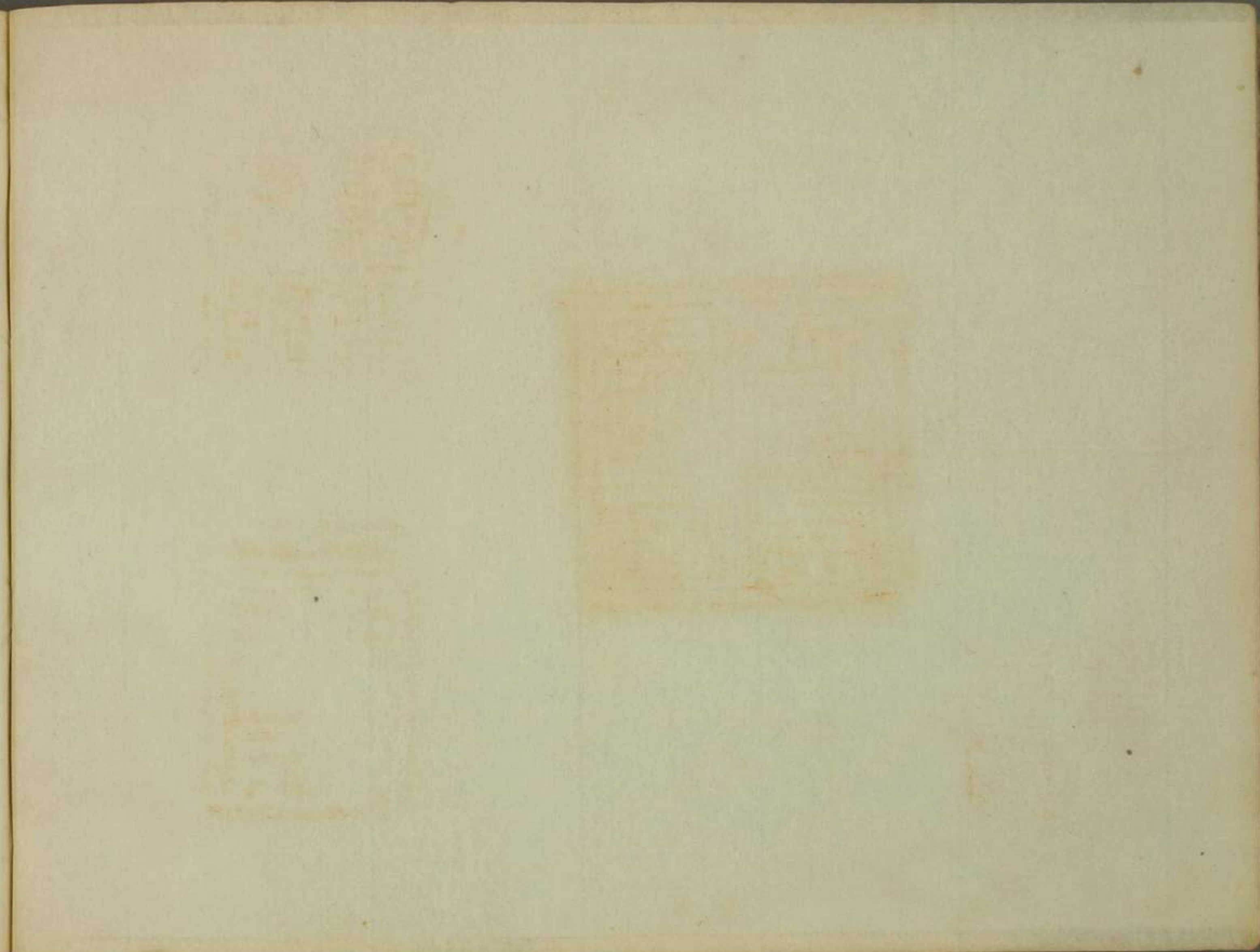


菽子藏





宮
鎮
聖



八幡大寺菩薩字讓



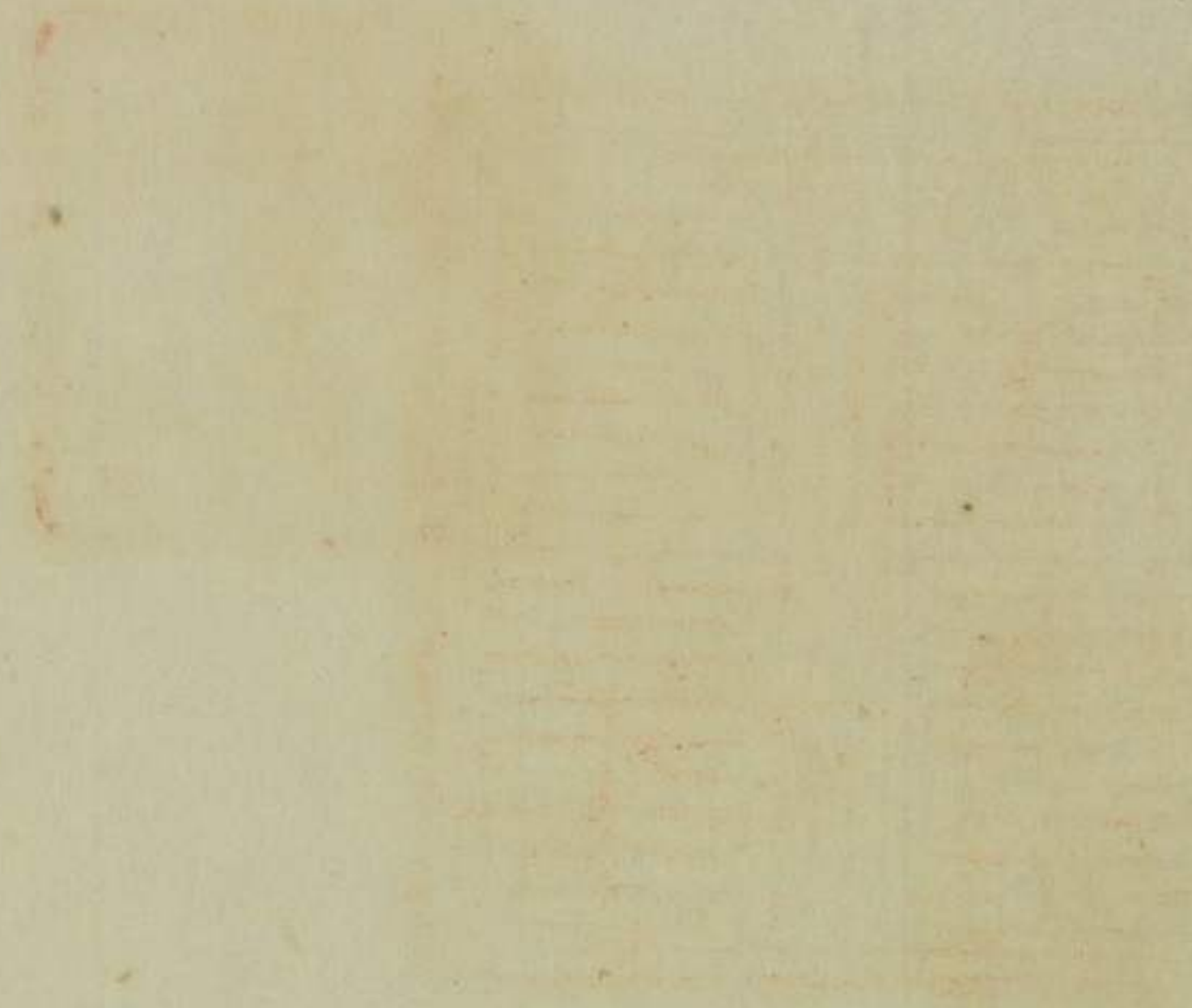
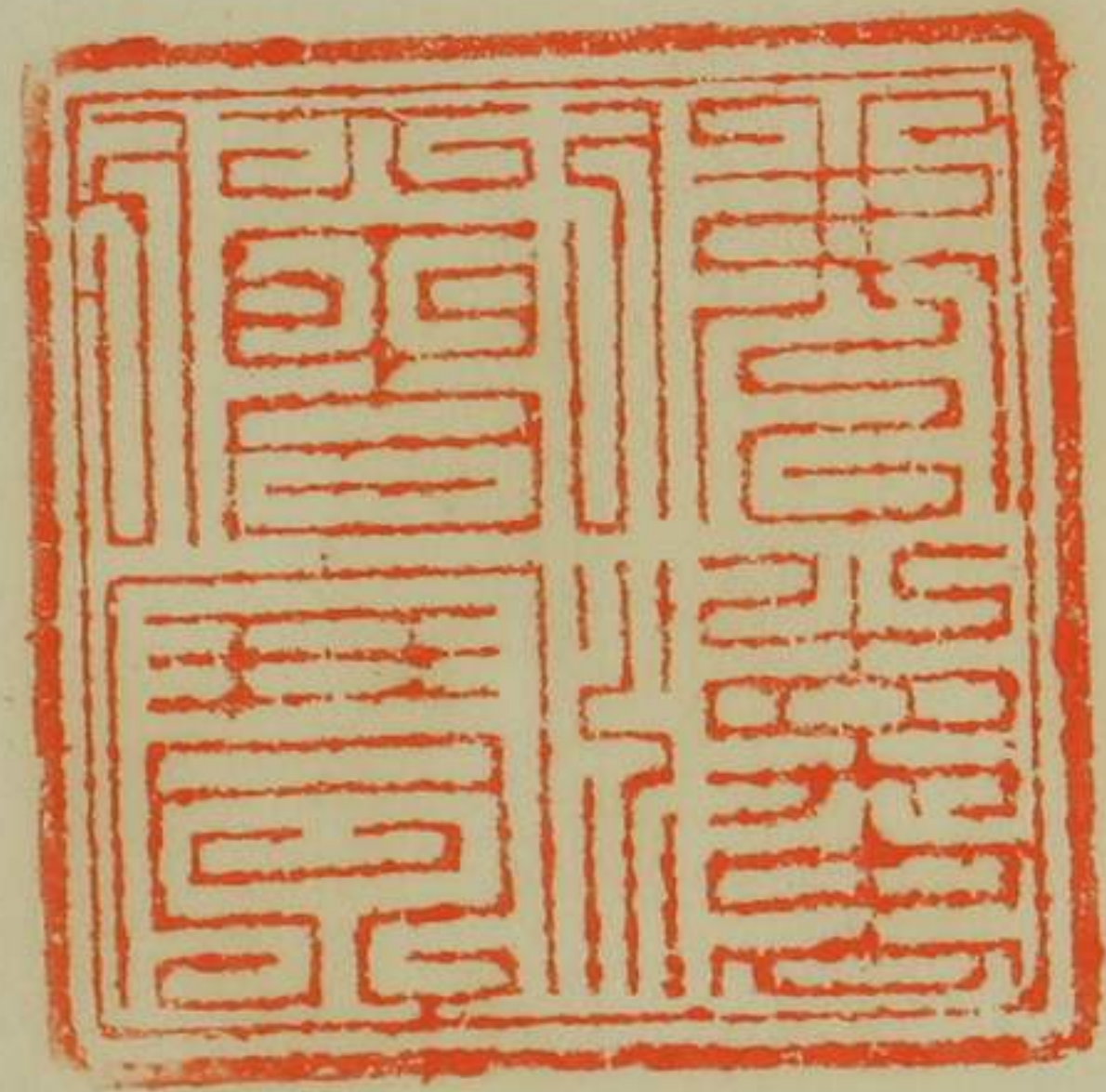
Faint vertical text impression on the right page, possibly bleed-through from the reverse side.





新町



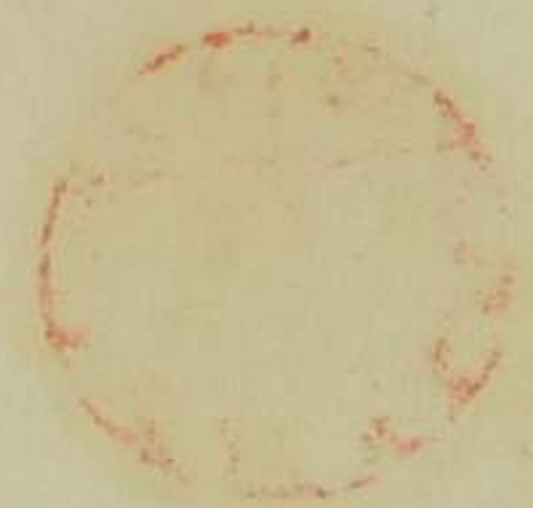


瑞雲山

安國寺

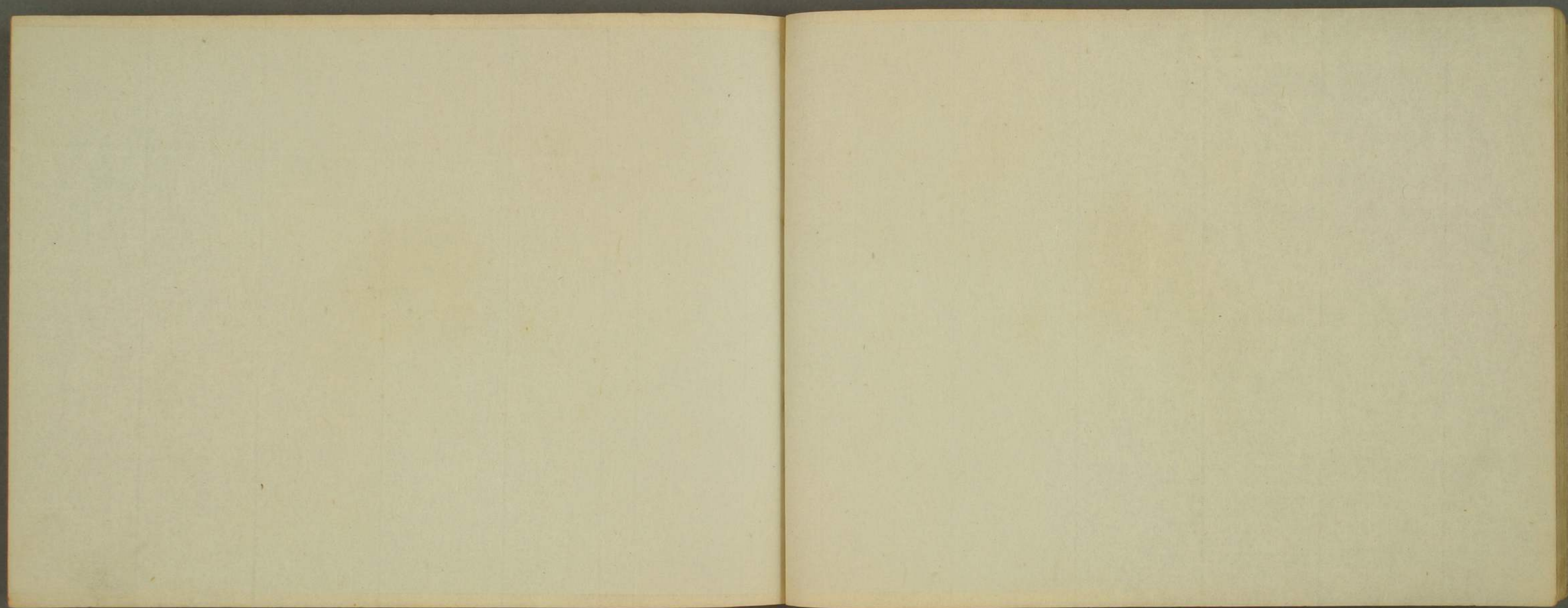




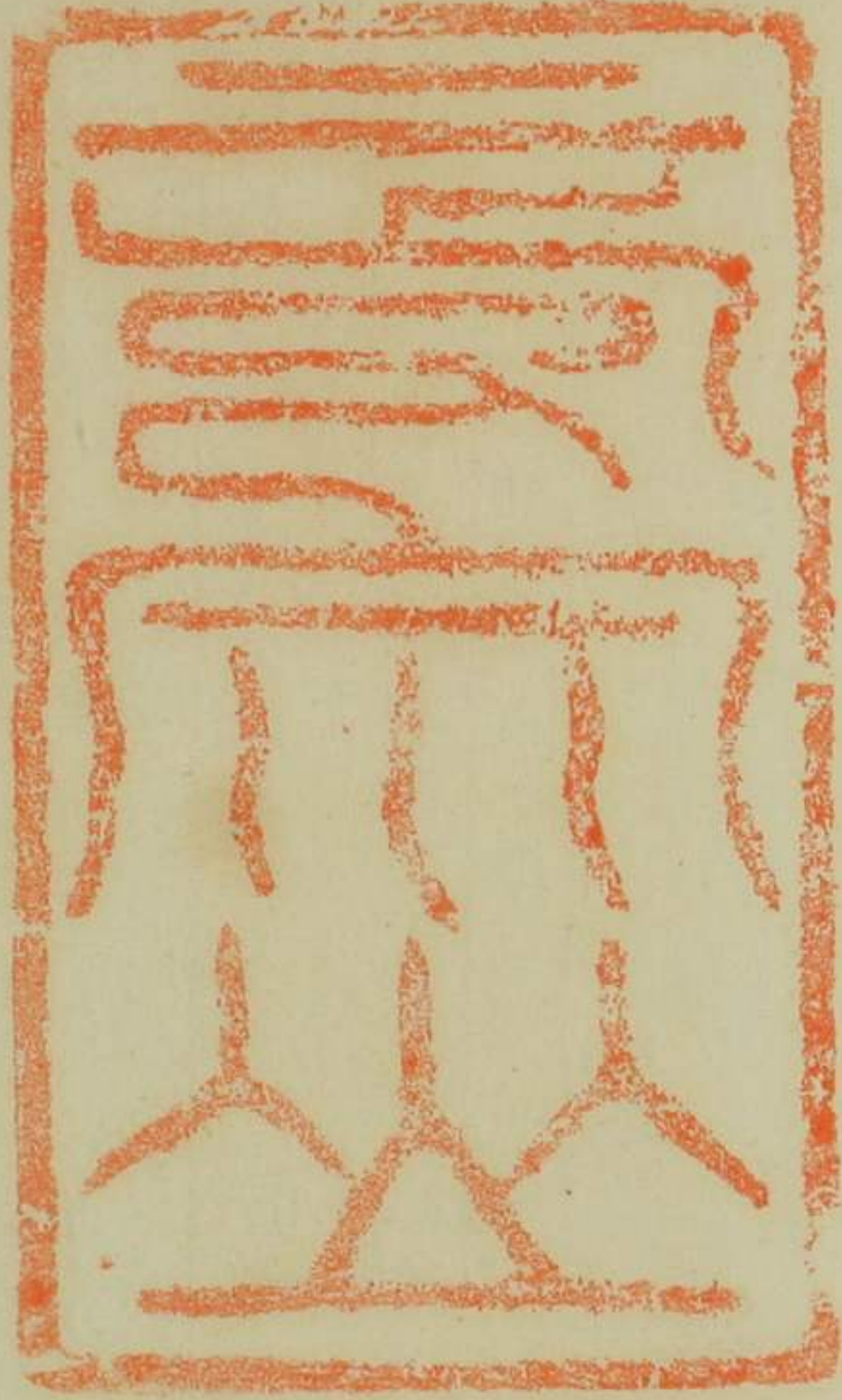














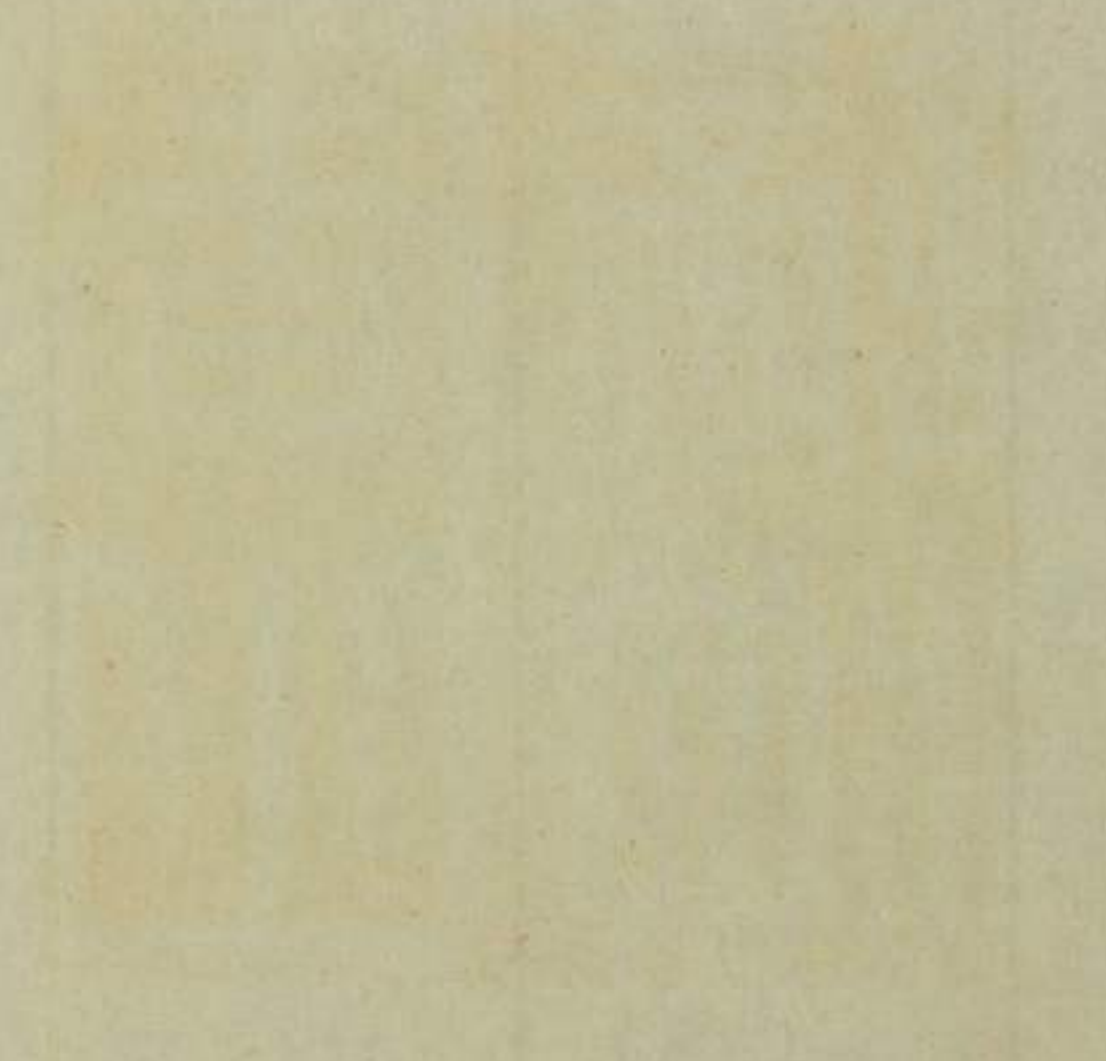
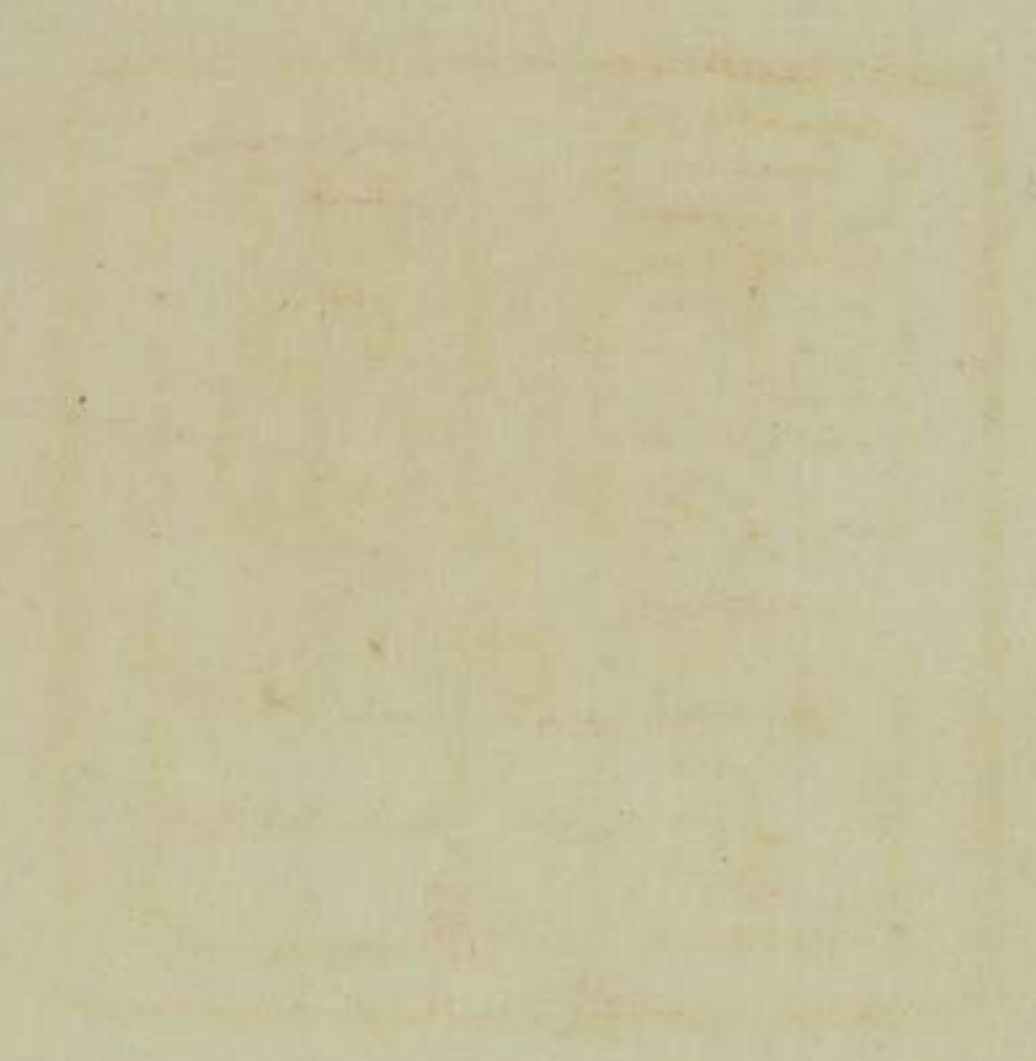
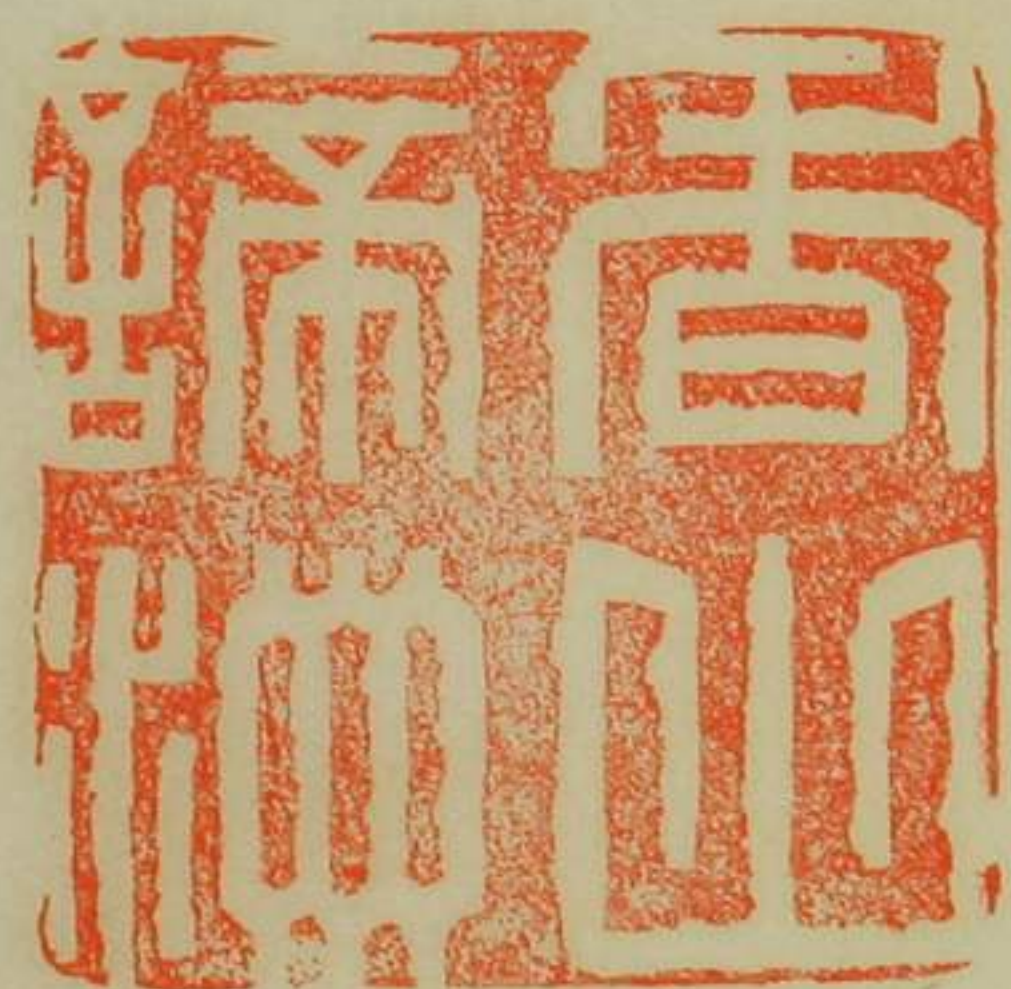
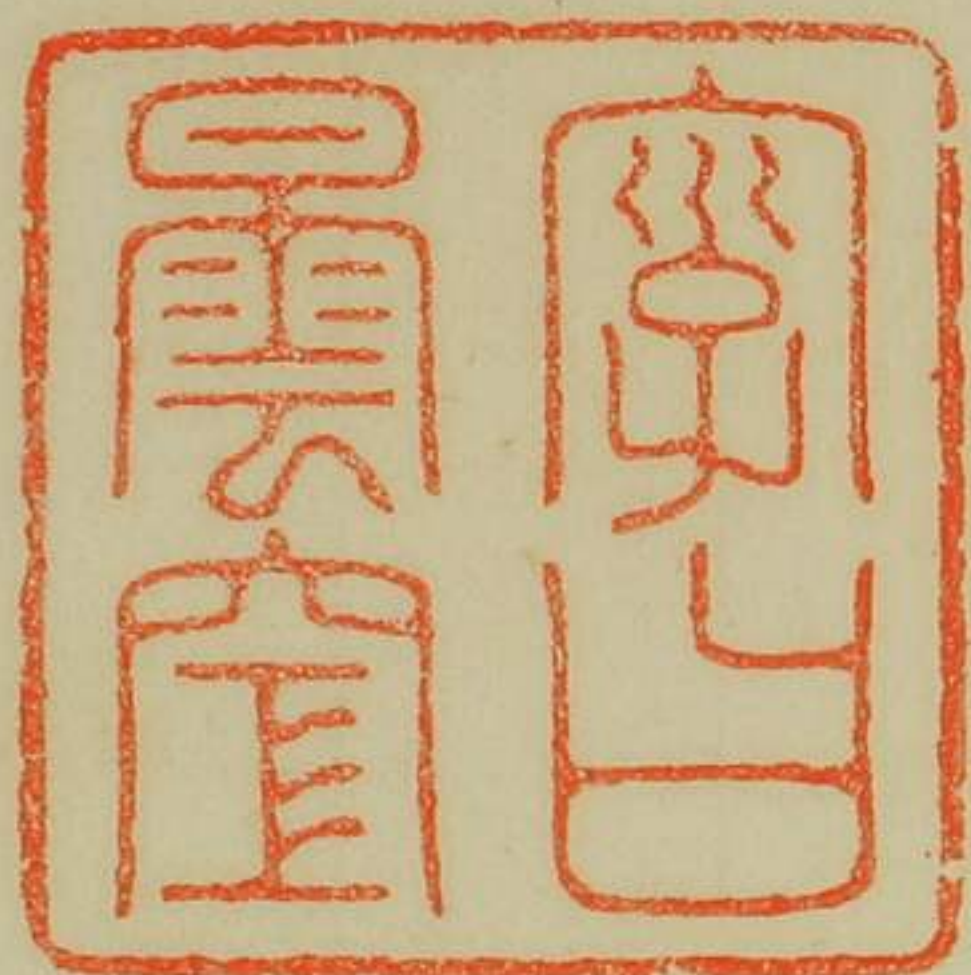
關公印

南陽諸葛

真西山正續

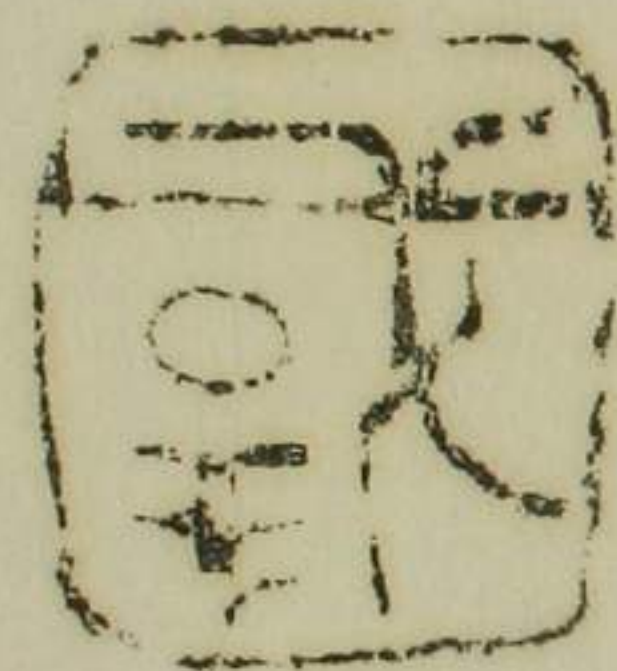




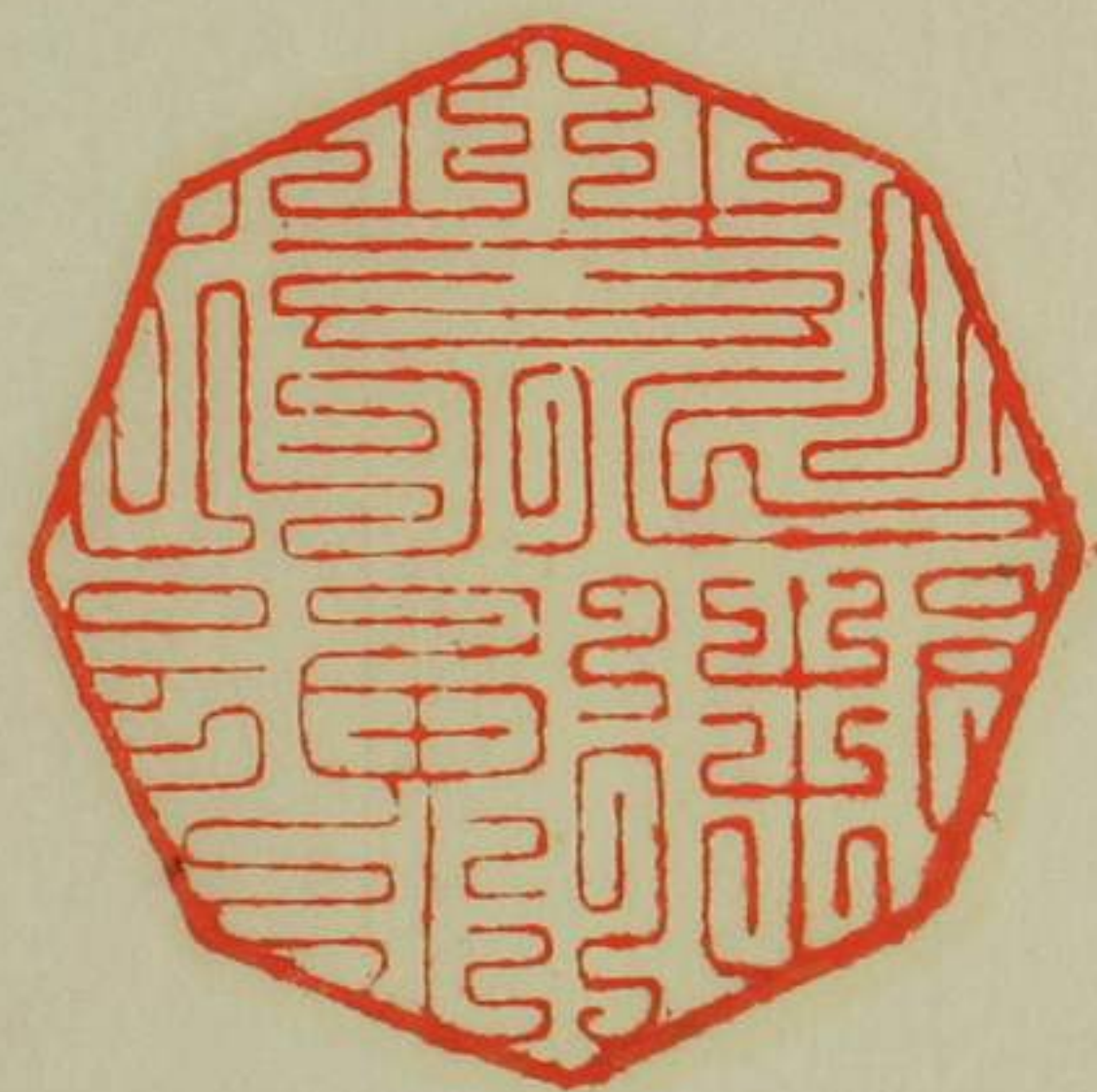










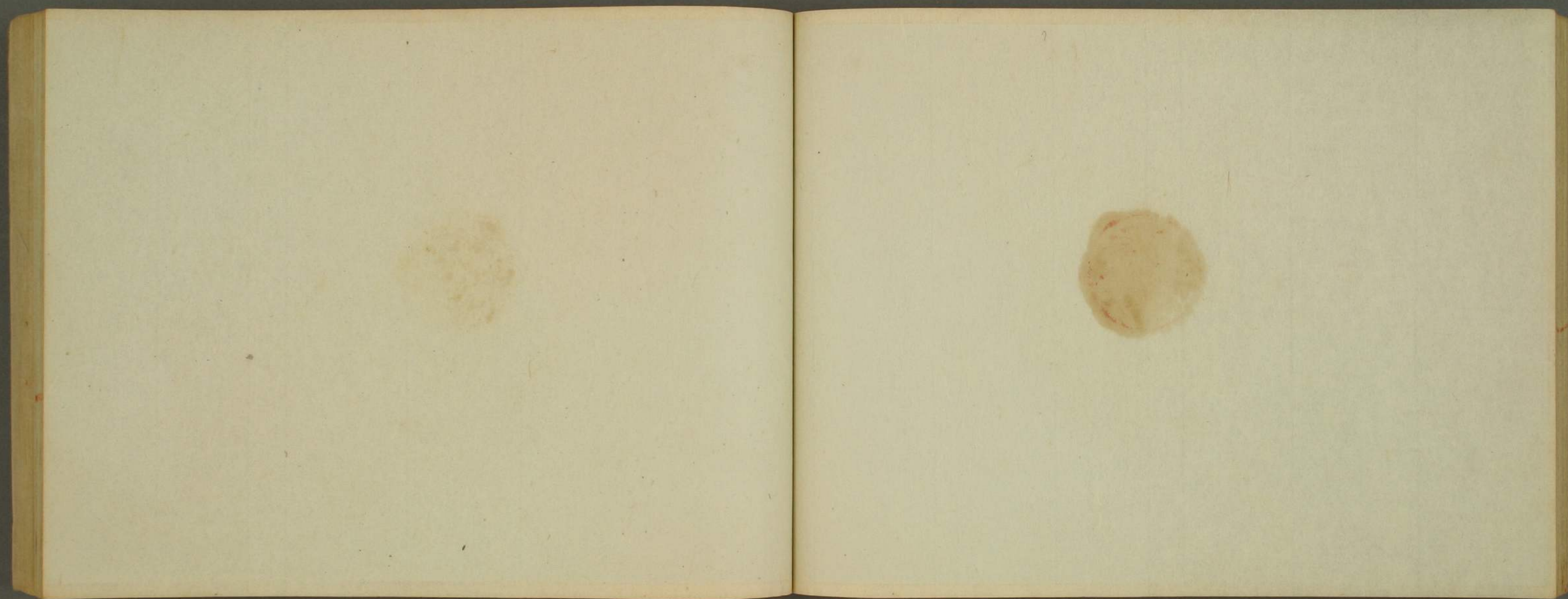


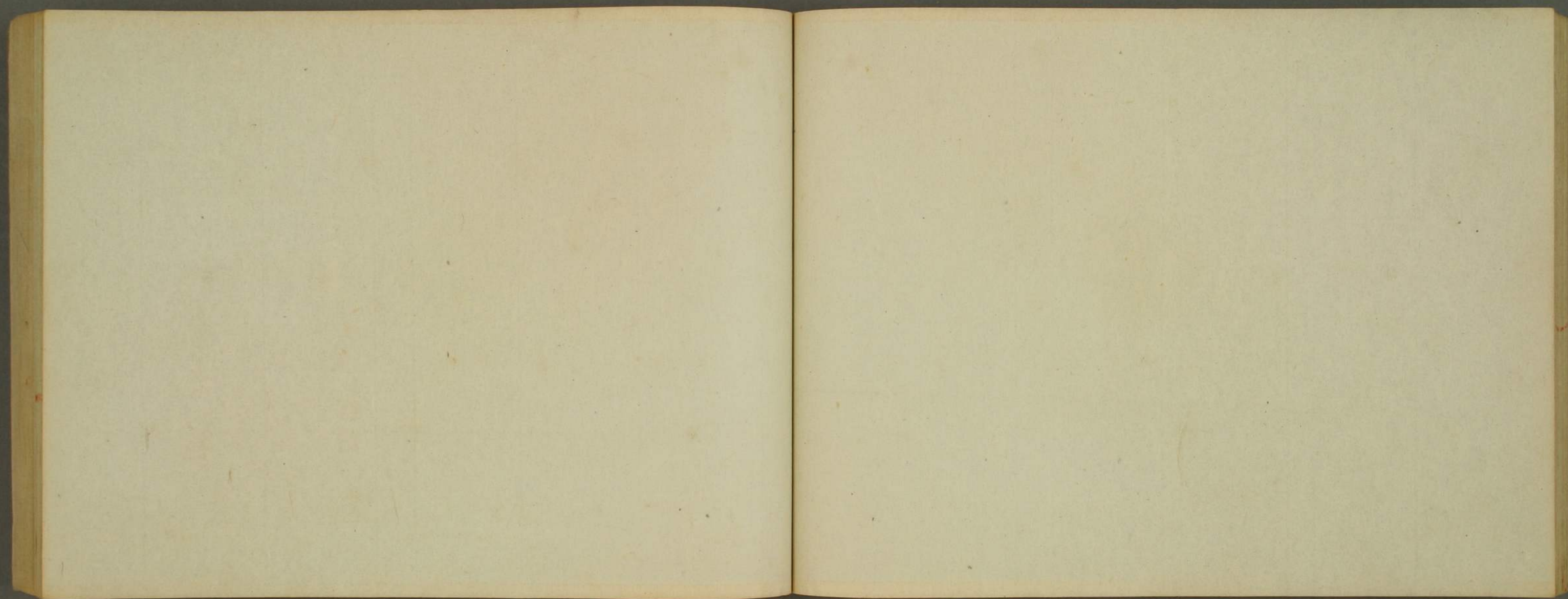


長
忍宮
神社
豊浦
田都



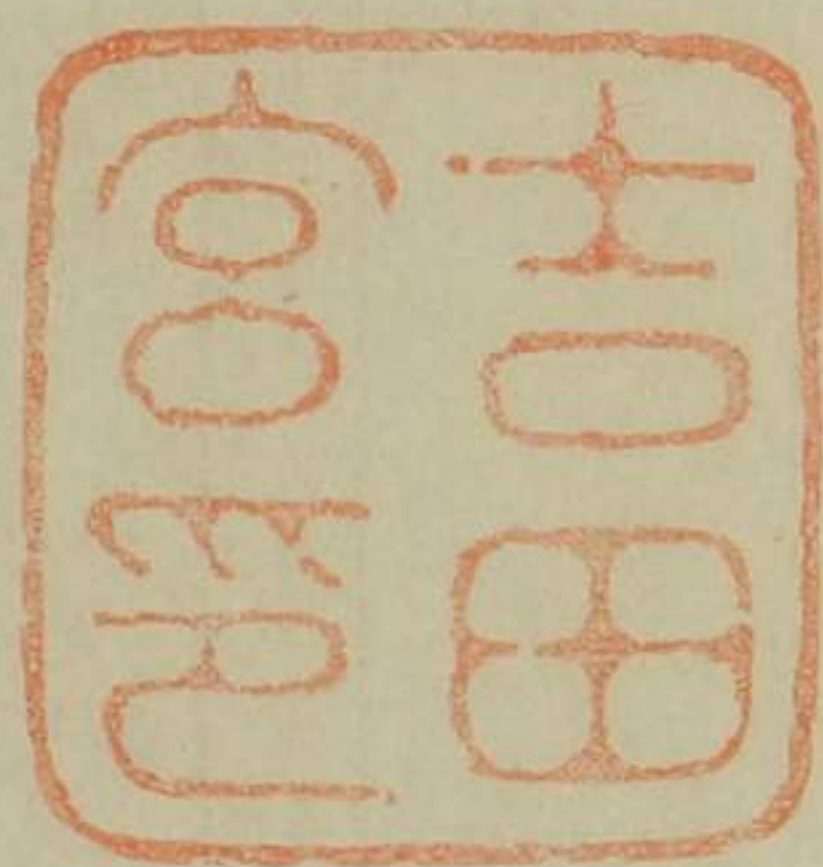


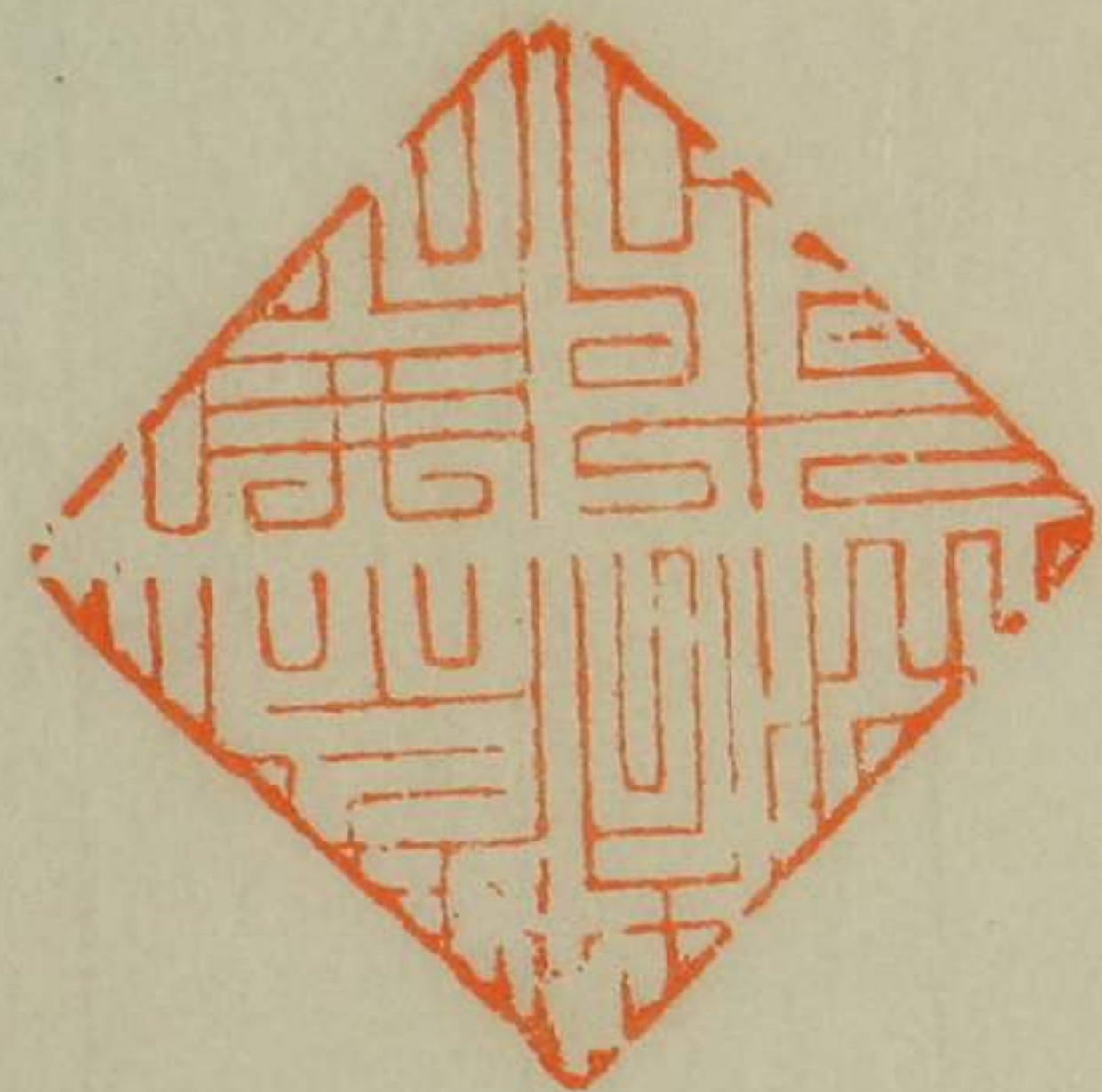


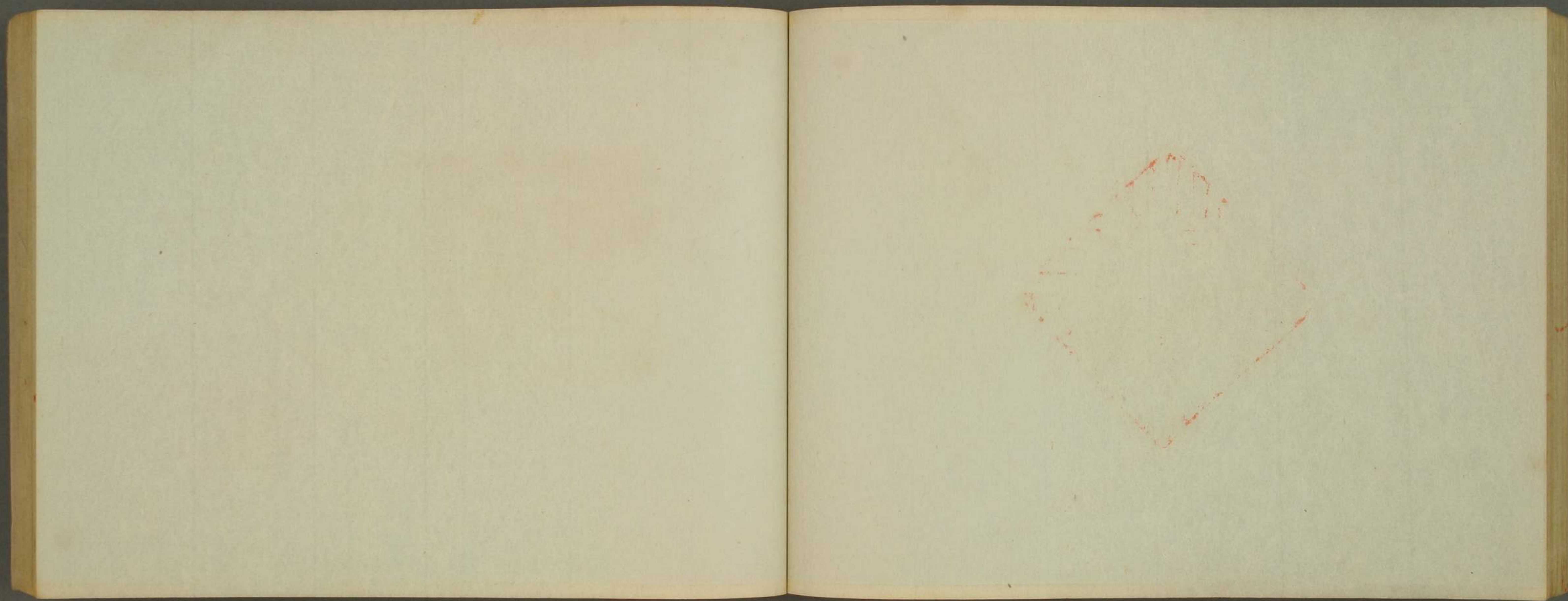




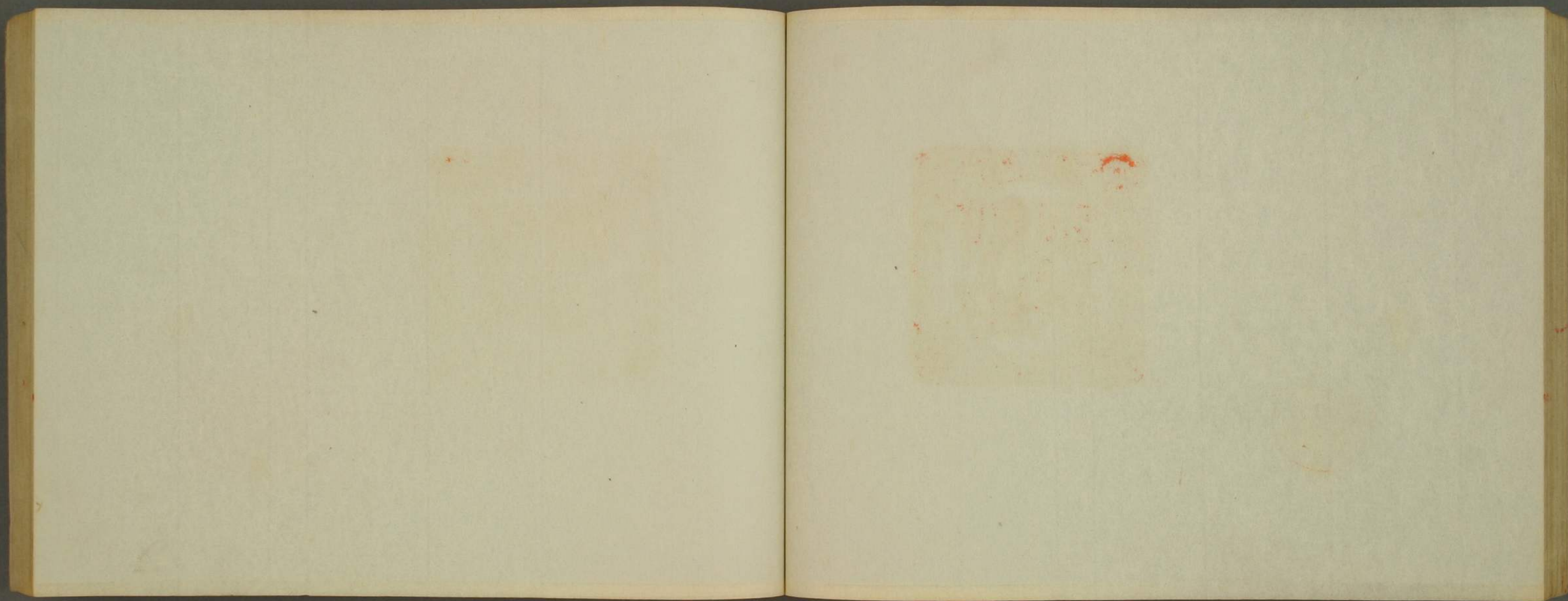












劍皇天御神



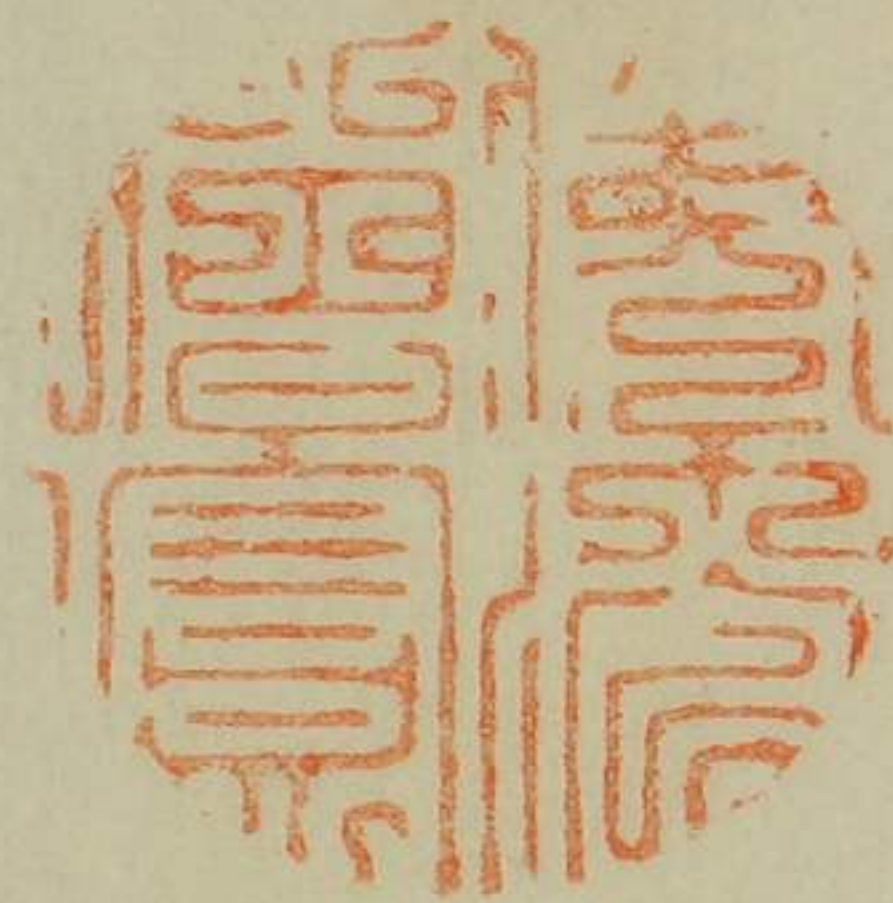


老
道
人
印



萬德寺
事發所

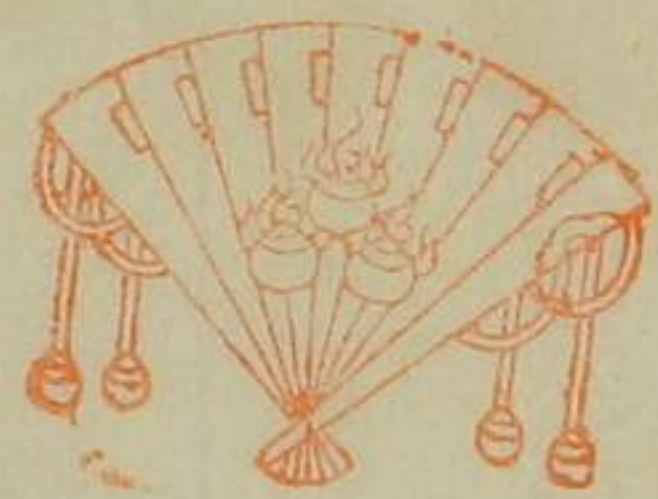






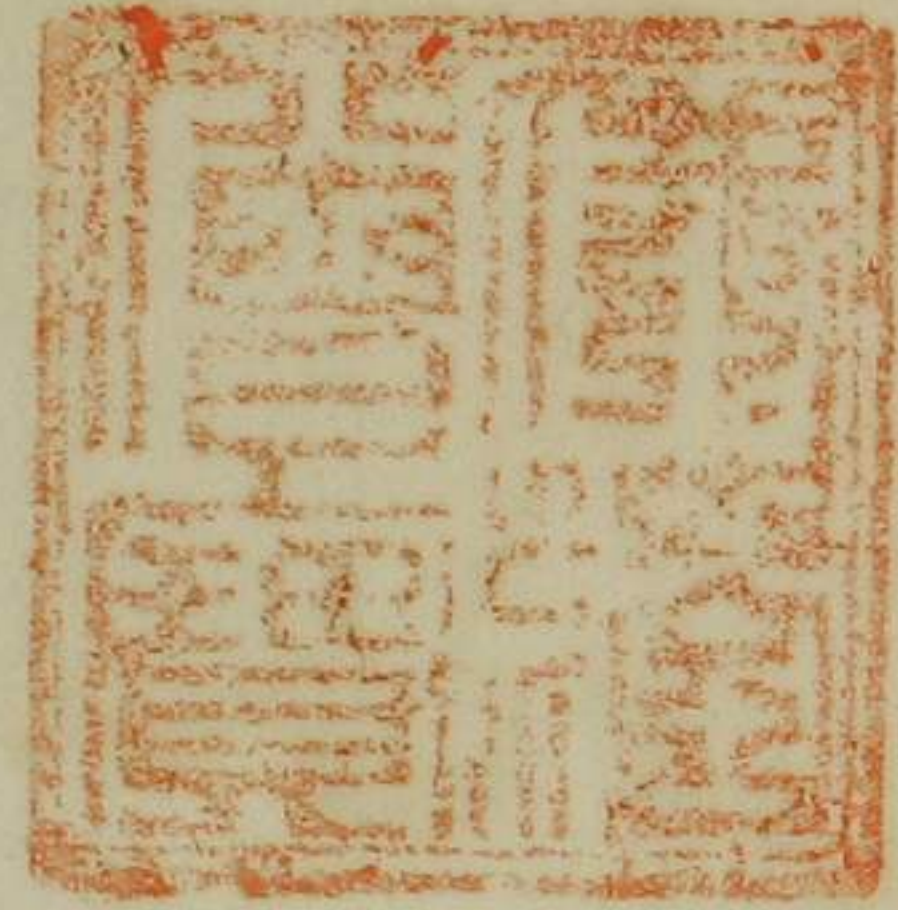


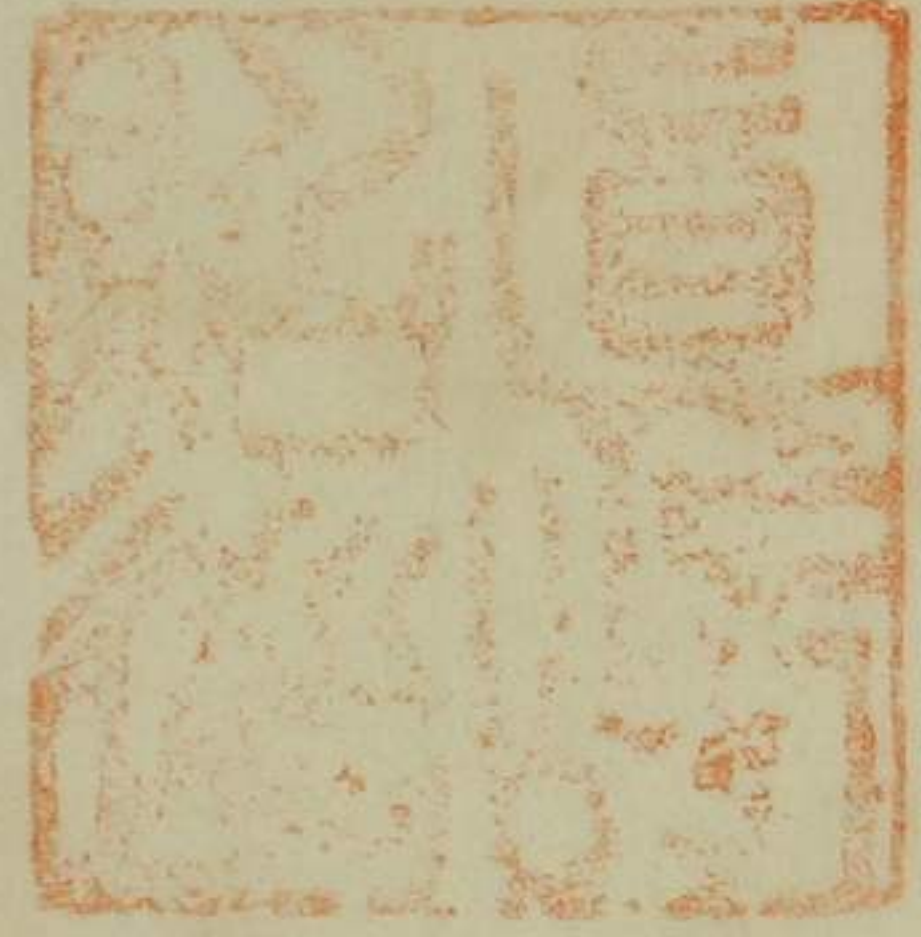


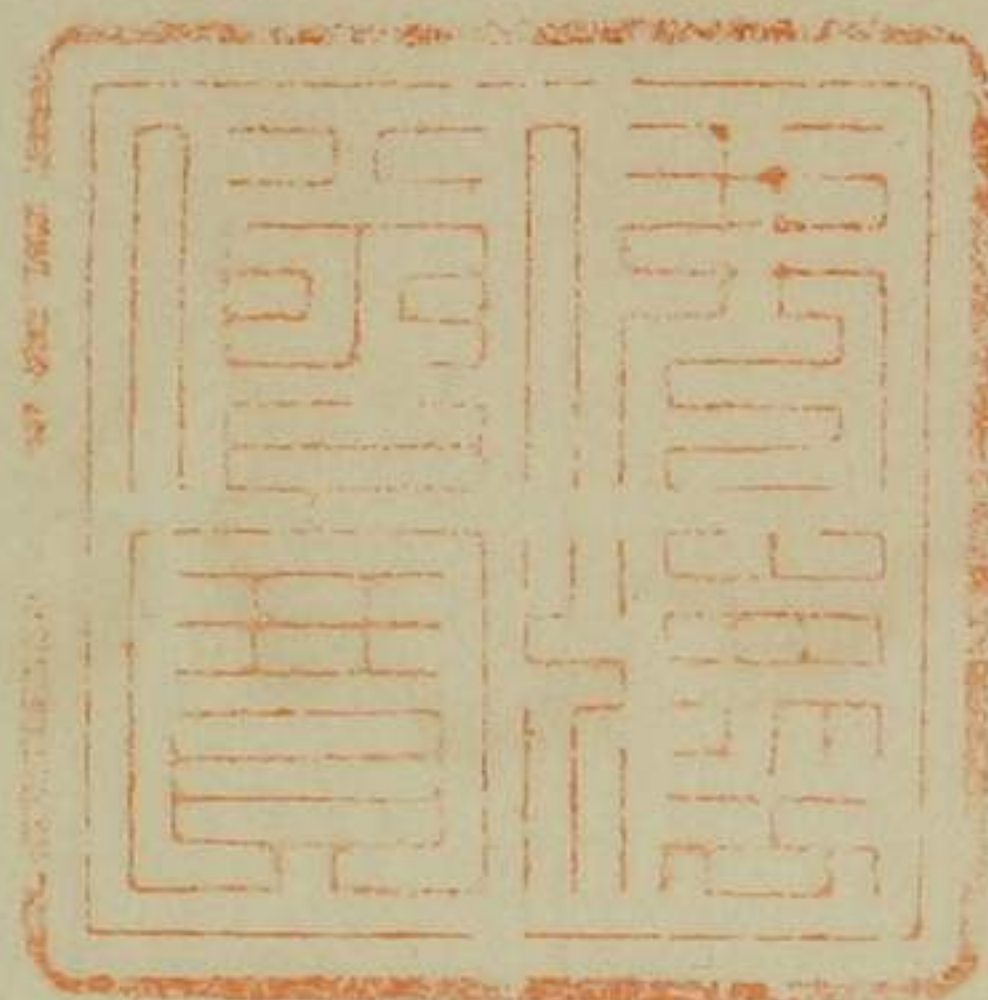


妙樂寺印









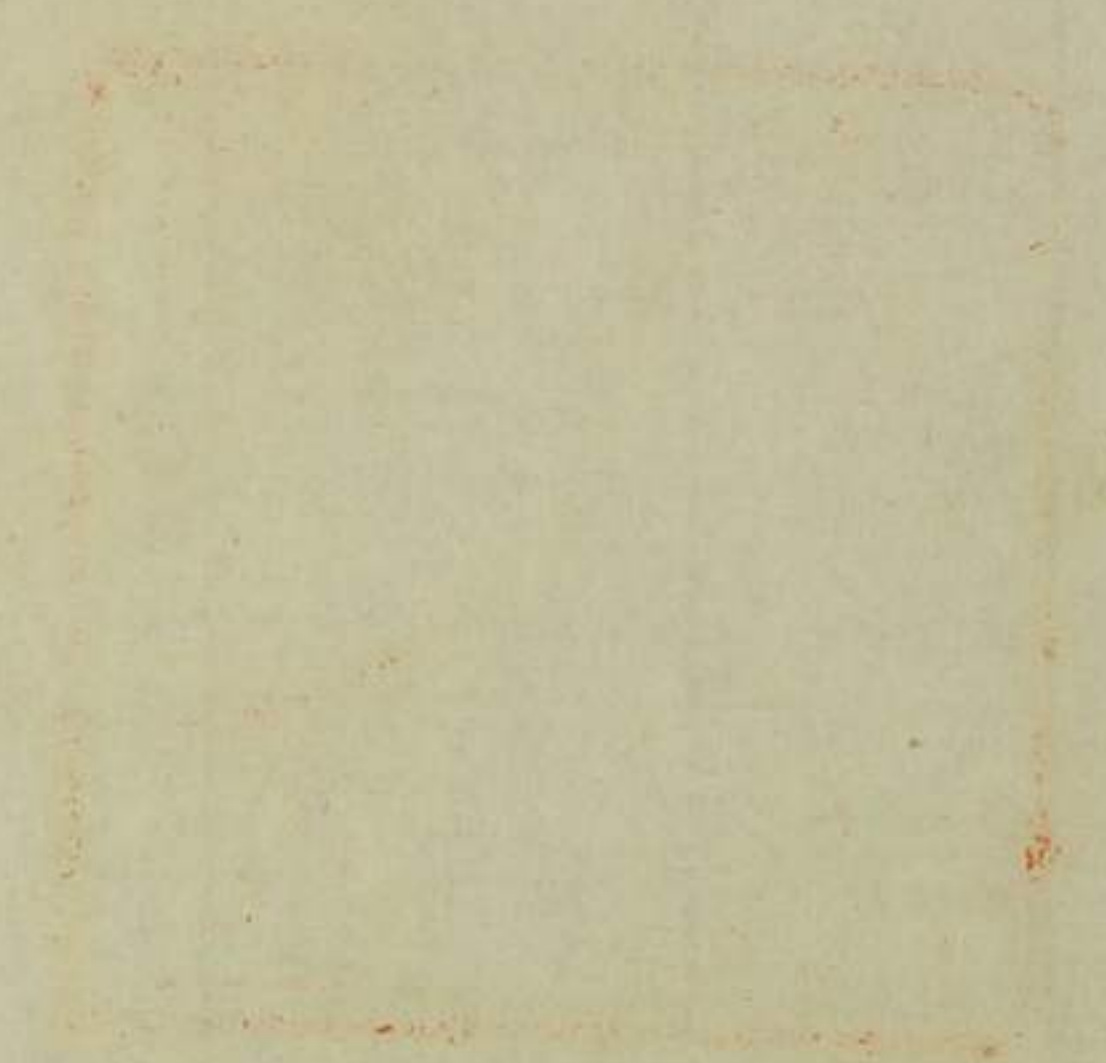
若換遠敷郡今富村
青井 妙德寺





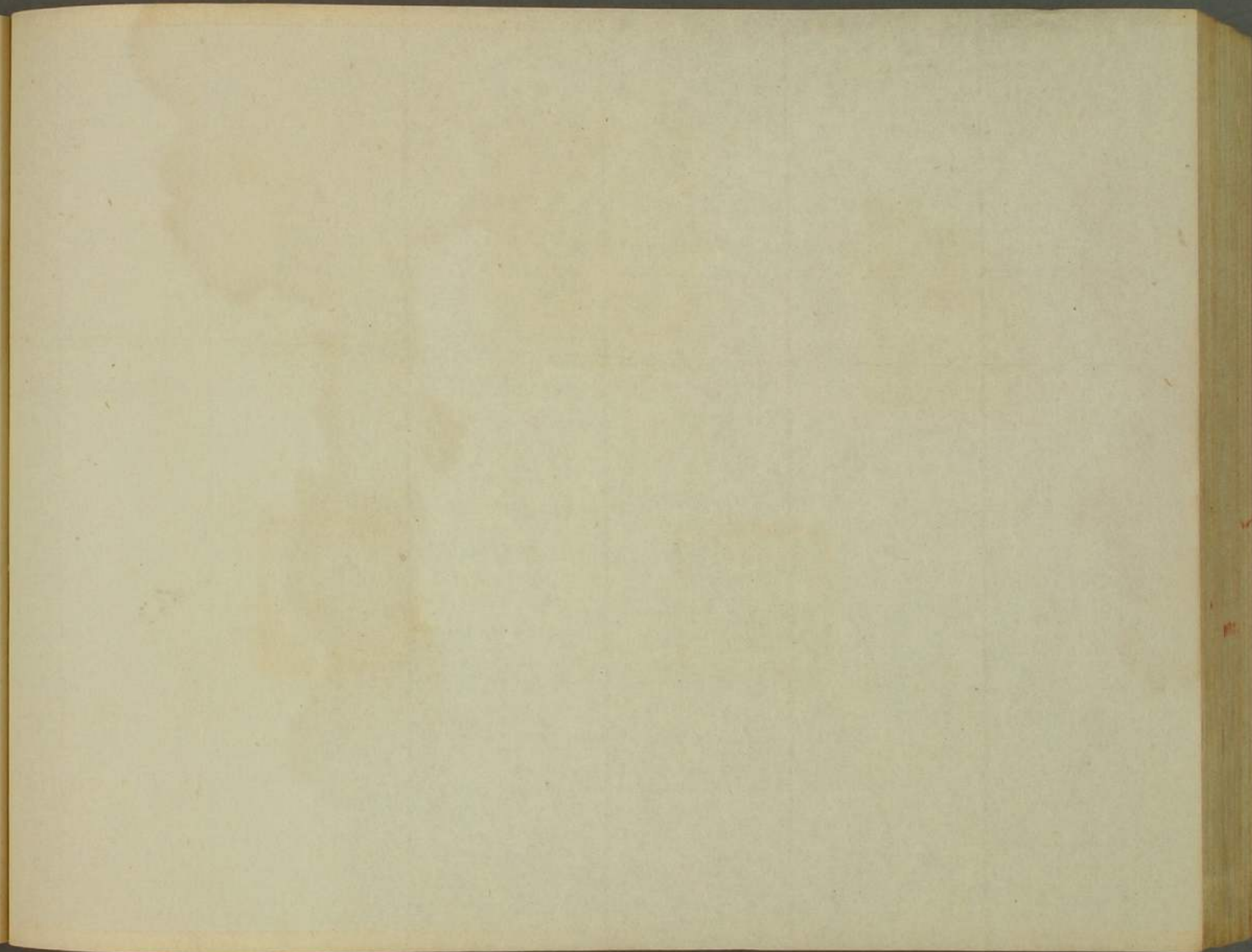
高成寺













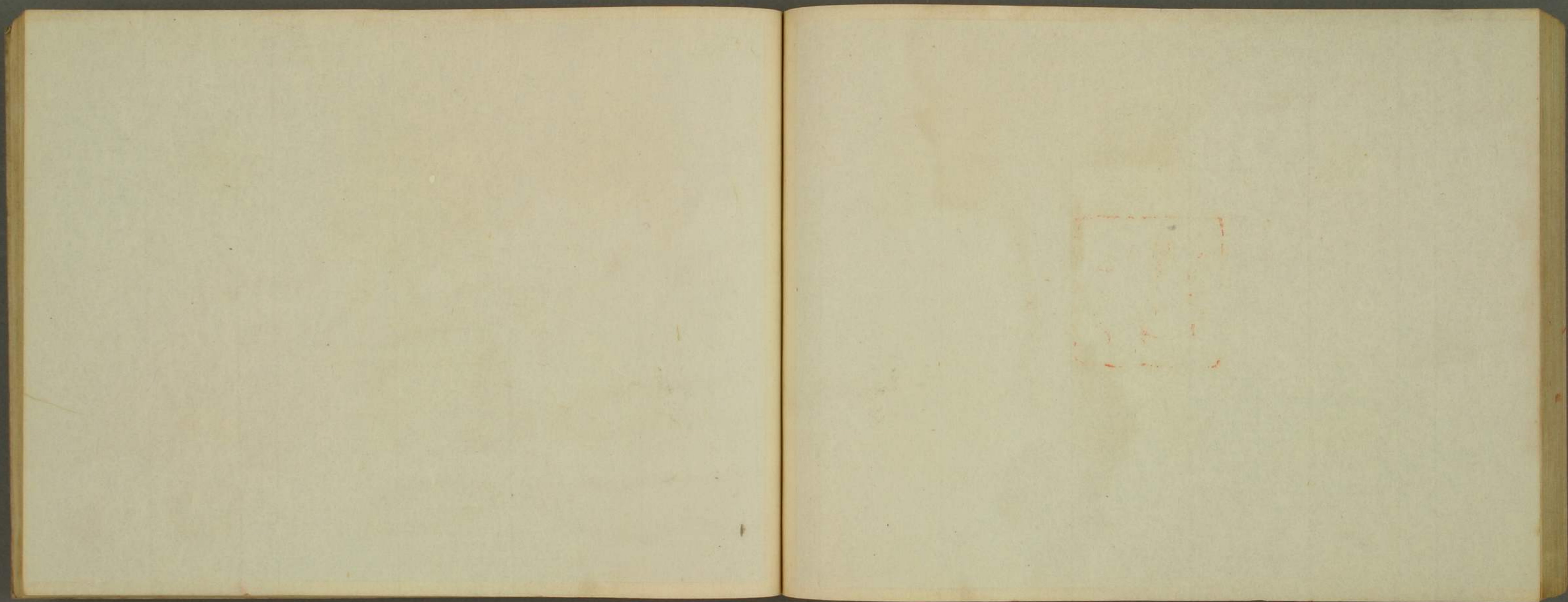


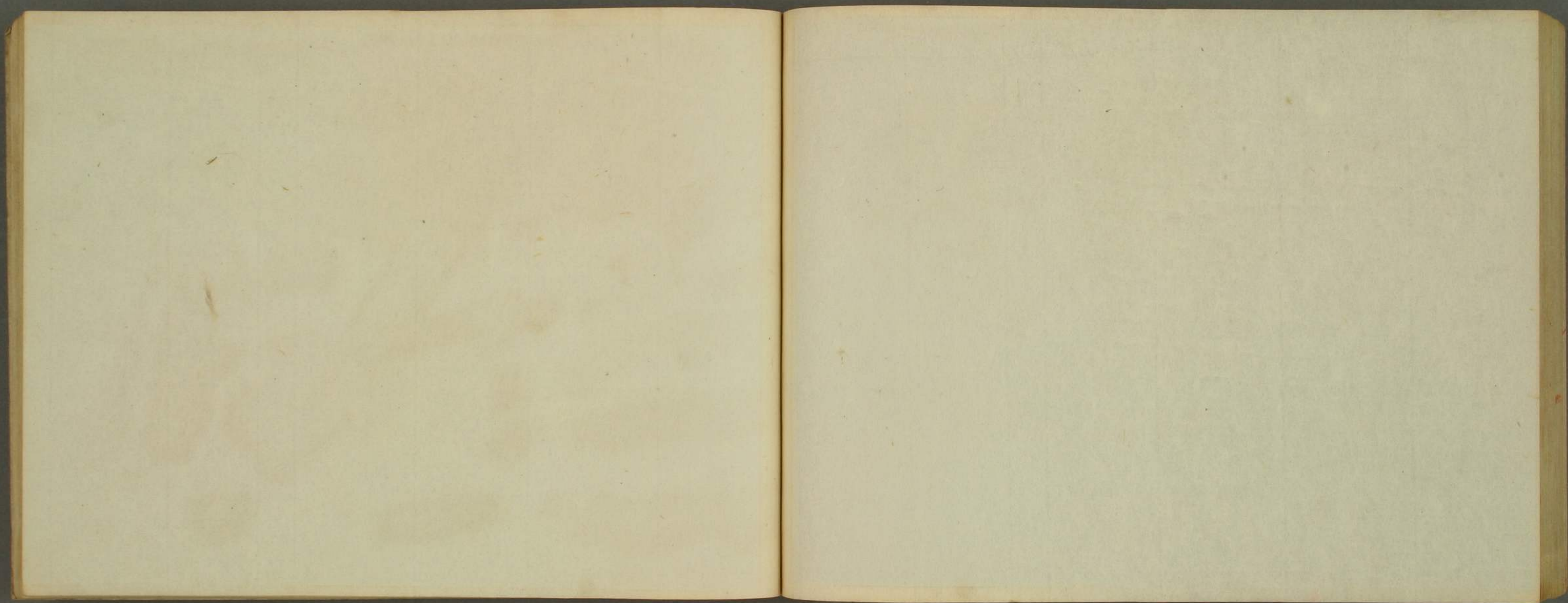










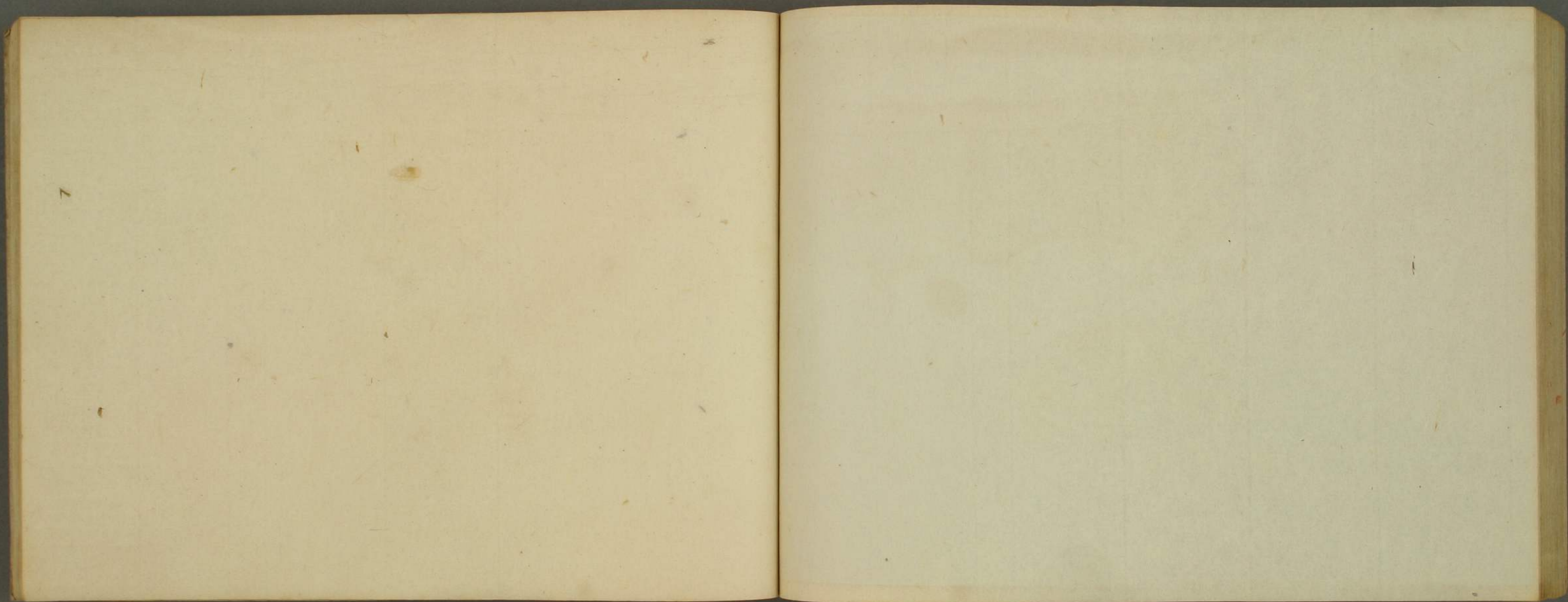




Red square seal impression in seal script, containing four characters: 王 孫 之 印 (Seal of King Sun).

Red rectangular seal impression in seal script, containing four characters: 孫 之 印 (Seal of Sun).

Red square seal impression in seal script, containing four characters: 孫 之 印 (Seal of Sun).



以下全て

白紙

