

特 別  
14  
2236  
33





特刊  
2236  
33

**POST OFFICE INFORMATION.**

**RAVES OF POSTAGE.**

The and from all parts of the United Kingdom for prepaid letters:—

1 lb.	1 lb.
2 lb.	2 lb.
3 lb.	3 lb.
4 lb.	4 lb.
5 lb.	5 lb.
6 lb.	6 lb.
7 lb.	7 lb.
8 lb.	8 lb.
9 lb.	9 lb.
10 lb.	10 lb.
11 lb.	11 lb.
12 lb.	12 lb.
13 lb.	13 lb.
14 lb.	14 lb.
15 lb.	15 lb.
16 lb.	16 lb.
17 lb.	17 lb.
18 lb.	18 lb.
19 lb.	19 lb.
20 lb.	20 lb.

Not exceeding 1 lb. 10s. 6d. per 2 oz. or less. Non-theless, unpaid postage, double rates on delivery. Packets must be open at the ends, or in open covers. Above 2 oz. Letter Postage rate. Postal Orders are now issued at any Money Order Office. They are charged thus:—1s. or 1s. 6d., 2s., or 2s. 6d., 3s., 4s., 5s., 6s., 7s., 8s., 9s., 10s., or 10s. 6d., 11s., or 11s. 6d.

**POST OFFICE ORDERS.**

Postal Orders are payable at Post Offices abroad.

**REGISTRATION.**

By a fee of twopence, any letter, newspaper or book-packet may be registered in any place in the United Kingdom or the British Colonies.

**PARCELS OF POSTAGE.**

The and from all parts of the United Kingdom for prepaid letters:—

1 lb.	1 lb.
2 lb.	2 lb.
3 lb.	3 lb.
4 lb.	4 lb.
5 lb.	5 lb.
6 lb.	6 lb.
7 lb.	7 lb.
8 lb.	8 lb.
9 lb.	9 lb.
10 lb.	10 lb.
11 lb.	11 lb.
12 lb.	12 lb.
13 lb.	13 lb.
14 lb.	14 lb.
15 lb.	15 lb.
16 lb.	16 lb.
17 lb.	17 lb.
18 lb.	18 lb.
19 lb.	19 lb.
20 lb.	20 lb.

Not exceeding 1 lb. 10s. 6d. per 2 oz. or less. Non-theless, unpaid postage, double rates on delivery. Packets must be open at the ends, or in open covers. Above 2 oz. Letter Postage rate. Postal Orders are now issued at any Money Order Office. They are charged thus:—1s. or 1s. 6d., 2s., or 2s. 6d., 3s., 4s., 5s., 6s., 7s., 8s., 9s., 10s., or 10s. 6d., 11s., or 11s. 6d.

**BOOK AND CIRCULAR POST.**

The postage is 4d. per 2 oz. or less. Non-theless, unpaid postage, double rates on delivery. Packets must be open at the ends, or in open covers. Above 2 oz. Letter Postage rate. Postal Orders are now issued at any Money Order Office. They are charged thus:—1s. or 1s. 6d., 2s., or 2s. 6d., 3s., 4s., 5s., 6s., 7s., 8s., 9s., 10s., or 10s. 6d., 11s., or 11s. 6d.

**POSTAL ORDERS.**

Postal Orders are now issued at any Money Order Office. They are charged thus:—1s. or 1s. 6d., 2s., or 2s. 6d., 3s., 4s., 5s., 6s., 7s., 8s., 9s., 10s., or 10s. 6d., 11s., or 11s. 6d.

**REGISTRATION.**

By a fee of twopence, any letter, newspaper or book-packet may be registered in any place in the United Kingdom or the British Colonies.

**RAVES OF POSTAGE.**

The and from all parts of the United Kingdom for prepaid letters:—

1 lb.	1 lb.
2 lb.	2 lb.
3 lb.	3 lb.
4 lb.	4 lb.
5 lb.	5 lb.
6 lb.	6 lb.
7 lb.	7 lb.
8 lb.	8 lb.
9 lb.	9 lb.
10 lb.	10 lb.
11 lb.	11 lb.
12 lb.	12 lb.
13 lb.	13 lb.
14 lb.	14 lb.
15 lb.	15 lb.
16 lb.	16 lb.
17 lb.	17 lb.
18 lb.	18 lb.
19 lb.	19 lb.
20 lb.	20 lb.

Not exceeding 1 lb. 10s. 6d. per 2 oz. or less. Non-theless, unpaid postage, double rates on delivery. Packets must be open at the ends, or in open covers. Above 2 oz. Letter Postage rate. Postal Orders are now issued at any Money Order Office. They are charged thus:—1s. or 1s. 6d., 2s., or 2s. 6d., 3s., 4s., 5s., 6s., 7s., 8s., 9s., 10s., or 10s. 6d., 11s., or 11s. 6d.

**POST OFFICE INFORMATION.**

**RAVES OF POSTAGE.**

The and from all parts of the United Kingdom for prepaid letters:—

1 lb.	1 lb.
2 lb.	2 lb.
3 lb.	3 lb.
4 lb.	4 lb.
5 lb.	5 lb.
6 lb.	6 lb.
7 lb.	7 lb.
8 lb.	8 lb.
9 lb.	9 lb.
10 lb.	10 lb.
11 lb.	11 lb.
12 lb.	12 lb.
13 lb.	13 lb.
14 lb.	14 lb.
15 lb.	15 lb.
16 lb.	16 lb.
17 lb.	17 lb.
18 lb.	18 lb.
19 lb.	19 lb.
20 lb.	20 lb.

Not exceeding 1 lb. 10s. 6d. per 2 oz. or less. Non-theless, unpaid postage, double rates on delivery. Packets must be open at the ends, or in open covers. Above 2 oz. Letter Postage rate. Postal Orders are now issued at any Money Order Office. They are charged thus:—1s. or 1s. 6d., 2s., or 2s. 6d., 3s., 4s., 5s., 6s., 7s., 8s., 9s., 10s., or 10s. 6d., 11s., or 11s. 6d.

**POST OFFICE INFORMATION.**

**RAVES OF POSTAGE.**

The and from all parts of the United Kingdom for prepaid letters:—

1 lb.	1 lb.
2 lb.	2 lb.
3 lb.	3 lb.
4 lb.	4 lb.
5 lb.	5 lb.
6 lb.	6 lb.
7 lb.	7 lb.
8 lb.	8 lb.
9 lb.	9 lb.
10 lb.	10 lb.
11 lb.	11 lb.
12 lb.	12 lb.
13 lb.	13 lb.
14 lb.	14 lb.
15 lb.	15 lb.
16 lb.	16 lb.
17 lb.	17 lb.
18 lb.	18 lb.
19 lb.	19 lb.
20 lb.	20 lb.

Not exceeding 1 lb. 10s. 6d. per 2 oz. or less. Non-theless, unpaid postage, double rates on delivery. Packets must be open at the ends, or in open covers. Above 2 oz. Letter Postage rate. Postal Orders are now issued at any Money Order Office. They are charged thus:—1s. or 1s. 6d., 2s., or 2s. 6d., 3s., 4s., 5s., 6s., 7s., 8s., 9s., 10s., or 10s. 6d., 11s., or 11s. 6d.

**READY RECKONER AND MARKETING TABLE.**

No.	10.	11.	12.	13.	14.	15.	16.	17.	18.	19.	20.	21.	22.	23.	24.	25.	26.	27.	28.	29.	30.
0	10	20	30	40	50	60	70	80	90	100	110	120	130	140	150	160	170	180	190	200	210
1	10	20	30	40	50	60	70	80	90	100	110	120	130	140	150	160	170	180	190	200	210
2	20	30	40	50	60	70	80	90	100	110	120	130	140	150	160	170	180	190	200	210	220
3	30	40	50	60	70	80	90	100	110	120	130	140	150	160	170	180	190	200	210	220	230
4	40	50	60	70	80	90	100	110	120	130	140	150	160	170	180	190	200	210	220	230	240
5	50	60	70	80	90	100	110	120	130	140	150	160	170	180	190	200	210	220	230	240	250
6	60	70	80	90	100	110	120	130	140	150	160	170	180	190	200	210	220	230	240	250	260
7	70	80	90	100	110	120	130	140	150	160	170	180	190	200	210	220	230	240	250	260	270
8	80	90	100	110	120	130	140	150	160	170	180	190	200	210	220	230	240	250	260	270	280
9	90	100	110	120	130	140	150	160	170	180	190	200	210	220	230	240	250	260	270	280	290
10	100	110	120	130	140	150	160	170	180	190	200	210	220	230	240	250	260	270	280	290	300

**POST OFFICE INFORMATION.**

**RAVES OF POSTAGE.**

The and from all parts of the United Kingdom for prepaid letters:—

1 lb.	1 lb.
2 lb.	2 lb.
3 lb.	3 lb.
4 lb.	4 lb.
5 lb.	5 lb.
6 lb.	6 lb.
7 lb.	7 lb.
8 lb.	8 lb.
9 lb.	9 lb.
10 lb.	10 lb.
11 lb.	11 lb.
12 lb.	12 lb.
13 lb.	13 lb.
14 lb.	14 lb.
15 lb.	15 lb.
16 lb.	16 lb.
17 lb.	17 lb.
18 lb.	18 lb.
19 lb.	19 lb.
20 lb.	20 lb.

Not exceeding 1 lb. 10s. 6d. per 2 oz. or less. Non-theless, unpaid postage, double rates on delivery. Packets must be open at the ends, or in open covers. Above 2 oz. Letter Postage rate. Postal Orders are now issued at any Money Order Office. They are charged thus:—1s. or 1s. 6d., 2s., or 2s. 6d., 3s., 4s., 5s., 6s., 7s., 8s., 9s., 10s., or 10s. 6d., 11s., or 11s. 6d.

**POST OFFICE INFORMATION.**

**RAVES OF POSTAGE.**

The and from all parts of the United Kingdom for prepaid letters:—

1 lb.	1 lb.
2 lb.	2 lb.
3 lb.	3 lb.
4 lb.	4 lb.
5 lb.	5 lb.
6 lb.	6 lb.
7 lb.	7 lb.
8 lb.	8 lb.
9 lb.	9 lb.
10 lb.	10 lb.
11 lb.	11 lb.
12 lb.	12 lb.
13 lb.	13 lb.
14 lb.	14 lb.
15 lb.	15 lb.
16 lb.	16 lb.
17 lb.	17 lb.
18 lb.	18 lb.
19 lb.	19 lb.
20 lb.	20 lb.

Not exceeding 1 lb. 10s. 6d. per 2 oz. or less. Non-theless, unpaid postage, double rates on delivery. Packets must be open at the ends, or in open covers. Above 2 oz. Letter Postage rate. Postal Orders are now issued at any Money Order Office. They are charged thus:—1s. or 1s. 6d., 2s., or 2s. 6d., 3s., 4s., 5s., 6s., 7s., 8s., 9s., 10s., or 10s. 6d., 11s., or 11s. 6d.

**POST OFFICE INFORMATION.**

**RAVES OF POSTAGE.**

The and from all parts of the United Kingdom for prepaid letters:—

1 lb.	1 lb.
2 lb.	2 lb.
3 lb.	3 lb.
4 lb.	4 lb.
5 lb.	5 lb.
6 lb.	6 lb.
7 lb.	7 lb.
8 lb.	8 lb.
9 lb.	9 lb.
10 lb.	10 lb.
11 lb.	11 lb.
12 lb.	12 lb.
13 lb.	13 lb.
14 lb.	14 lb.
15 lb.	15 lb.
16 lb.	16 lb.
17 lb.	17 lb.
18 lb.	18 lb.
19 lb.	19 lb.
20 lb.	20 lb.

Not exceeding 1 lb. 10s. 6d. per 2 oz. or less. Non-theless, unpaid postage, double rates on delivery. Packets must be open at the ends, or in open covers. Above 2 oz. Letter Postage rate. Postal Orders are now issued at any Money Order Office. They are charged thus:—1s. or 1s. 6d., 2s., or 2s. 6d., 3s., 4s., 5s., 6s., 7s., 8s., 9s., 10s., or 10s. 6d., 11s., or 11s. 6d.

(1) Rate! = roman

(2) Chickit stop

(3) Teach your grand mother to sack

egg = I know better than you, so don't tell to me of it more.

(4) To put on side = He is conceited.

(5) To go on the back = to go on the back

(6) To go on the rangle = rangle =

(7) He is holy seas over = He is really

(8) We had an on



He is <sup>little</sup> mad

(9) He is not all  
there = "

(10) To take a rise  
out of a person =  
to make fool of others  
and amuse one  
self.

(11) To pull a person's  
leg. To amuse oneself.

X (12) To be smitten =  
to be in love

(13) To be boozed (or  
tied) = to be drunk.

(14) To have a ~~tail~~  
screw = to be a

little mad.

(15) To go guzzle =  
to eat greedily.

(16) To shoot the moon.  
= to run away without  
paying his rent and  
taking the furniture  
without notice.

(17) Swear like a  
trooper = to swear  
terribly (I would not)

(18) (C) To call the  
queen my cousin.  
I am quite content  
with my position.

(19) Where do you keep  
= where do I lodge?  
(K 子 子)

(20) Where do you hang  
out or where do I



- You dig? = 1/2 2
- (21) A flapper =  
A little girl (K. 34)
- (22) A Hobbledog =  
girl or boy in age  
of just middle, not  
adult or not  
child.
- (23) A tomboy = girl  
behave like boy.
- (24) A cat = matty  
~~thing of~~  
woman
- 
- (25) An awful dog =  
smotherly job up  
son.
- (26) A brawler =  
a person who is not

- Gentleman
- (27) Peckers = stupid  
person
- (28) To paddle your  
<sup>own</sup> canoe = to do  
one's own work for  
oneself on whole
- (29) To go to the hog =  
to carry things to  
~~and~~ and (admission  
for wrong)
- (30) To shift the tangle  
foot = drink bad  
whisky (P. 117)
- (31) Feeding your  
face = to eat.
- (32) German distro-  
~~tion~~ dance =  
Bever (P. 113)
- (33) To lick creation =



- to beat every body
- (34) Giving a person  
to dressing = to  
speak to you several  
(35) to make a person  
sit up = "
- (36) to put a person's  
nose out of joint,  
= to annoy a person
- (37) Kissing the blarney-  
stone = to pay com-  
pliments (not just sincerely)
- (38) God bless a Dupe  
of Argyle, = when  
a person has insect  
in his body and makes  
it tickle to some-  
thing.
- (39) A Devil may  
care = doesn't

- A care what he ~~does~~  
does.
- (40) yarn = to ~~talk~~  
talk endlessly.
- (41) to ~~take~~ kid  
a person = to tell  
a person what not  
true and make him  
believe.
- (42) to pull a the long  
bow = to exaggerate
- (43) to ~~let~~ talk ~~through~~  
through your hat  
= to talk what  
~~you don't know~~  
nonsense
- (44) to have a tile  
loose = to be  
a little mad



(45) You are off  
an onion =  
to be a little

mad  
(46) to be giggled =  
an exclamation  
inaction for astonish-  
ment

(47) A good yarn =  
a story

(48) To cat = to be sick  
= to bring up your food  
from stomach.

(49) A nookingshop = a  
place

(50) Cad = not a  
gentleman.

(51) <sup>to</sup> Pump ship = water  
making.

(52) to comb his hair  
= talk severely.

(53) to cut his comb  
= to check

(54) keep your hair on  
= don't excite your-  
self (3 < 14) ~ 53)

(55) off your rocker  
= a little mad.

(56) three seats in  
the wind = nearly  
drunk.

(57) A bobby = police  
man = ~~the~~

(58) Ste Slavery =  
maid servant

(59) He shot his boat



= come to the end.  
(60) to come a cropper  
= to come to fall, i.e.

~~to fall down~~  
(61) a ~~great~~ great  
scot. = <sup>exclamation</sup> of astonishment

(62) son of a gun =  
term of exclamation, but  
not complimentary.

(63) O Jerusalem! = exclamation

(64) Chase me, Charley =  
a kind of greeting <sup>among</sup>  
lower class people

(65) Mind the point =  
take care

(66) Mind the step =  
"

(67) Keep off the grass =

of the way.

take care ~~of~~ <sup>are</sup> going

(68) to throw the  
hatchet = to  
esegzerate

(69) to bury the hatchet  
= to make peace

(70) to beat about the  
bush (A = H E U I R + A)  
V S S) = to aim at

the point in a ~~long~~  
~~to~~ round about way.

(71) mind your eye =  
take care.

(72) to wipe a person's  
eye = to get the  
bottom of the person.

(73) to wipe the floor  
with ~~the~~ person



= to give him a very  
bad beating.

(74) Chessmate = 78 4 5  
h 2 4 5 7 8 9 10 11 12  
13 14 15 16 17 18 19 20 21 22 23 24  
(24  
(25)

(75) To ~~be~~ spoke in  
the wheel = to get  
the better of a person  
(to stop)

(76) to hit the nail  
on the head = to do  
right thing directly.

(77) to swap = to  
exchange.

(78) dry up = hold  
your tongue.

(79) hold your row

or shut your row =  
to be silent

(80) cut the cackle  
and come to the  
horses = to stop  
talking nonsense and  
come to the point.

(81) fag = cigaret

(82) a fag = great  
deal of trouble

(83) a fag = 7 8 9 10 11 12  
elder boy  
is younger boy 1 2  
serbe 3 4 5 6 7 8 9 10 11 12  
younger boys 1 2 3 4 5 6 7 8 9 10 11 12

(84) to put the shutters  
up = to end

(85) Ask a policeman



~~to ask~~ I ~~will~~  
shall not answer,  
or it is not proper  
to ask me.

(86) Now we shall not  
be long = now  
we are coming to  
the point

(87) He knows how  
many beans make  
five = he ~~knows~~  
gets what he is  
doing, he gets  
into/about it

(88) He can't say boo  
to a goose =  
He is very stupid  
(cf. 938)

(89) (Prober) ~~by~~ swap

horses in midstream  
= Don't change your  
way to of doing a  
thing in half way.

(90) to make a row =  
to make a noise

(91) to have a row = to  
have a fight.

(92) ~~With~~ There are  
no lies on him =  
to have wits about  
what he does.

(93) ~~Mind~~ ~~hundred~~  
Hamlet with Hamlet  
left out = a party  
made for a person,  
but <sup>were</sup> that person  
is not there.

(94) Great Ceaser =



(95) An exclamation  
O my eyes = an  
exclamation

(96) He has got the  
pip = he is in  
bad humour

(97) He has got the  
hamp =  $\frac{1}{2}$  I

(98) Half a ~~with~~ mink  
= wait a moment

(99) Blast his eyes  
= confound him

(100) Roof-bird =  
money

(101) Tip o' us your  
flipper = shake  
hands

(102) Does your mother  
know you out  
= You are too young

to be here  
(103) Hit him in the  
bread-basket =  
Hit at stomach.

(104) Balls = (PE  $\frac{1}{2}$ ) nonsense

(105) I am hanged = I  
am much astonished

(106) You are hanged  
= go to the devil =  
go away

(107) After that a band  
played = great excitement  
after a thing done.

(108) Bet one bottom  
dollar = to bet the  
last dollar which you  
have.

(109) a stiff one = one  
who is no use.



(110) A lobster = life-  
guards-man

(111) A jail <sup>(pigeon)</sup> fool

(112) A Imag = fool

(113) A hard case =  
that what I don't know  
how to treat it.

(114) A moke = donkey  
(臭及 22 10 8)

(115) A bloke = a person

(116) Bligging idiot =  
a great fool who is  
always talking.

(117) A screw = One  
who don't like to spend  
any money

(118) To go nap = to  
play for every thing on

Nothing  
(119) to neck or nothing  
= to = collar

(120) Off collar =  
not well

(121) up the pole or  
up a tree = diffie  
culties

(122) to da a guy =  
to run away without  
paying the rent and etc.

(123) to bell the cat  
= to make a person  
less dangerous

(124) to ~~put~~ to ~~be~~  
rubbed it into a  
impression = to ~~press~~  
press at person

(125) to skate over him



ice = to do risky  
thing  
(126) a bit thick  
= to say something  
rather strong.

(127) Hot stuff =  
A brisk talk

(128) A warm pans-  
toner = 暖房 (ワルムボン)

(129) to blue it =  
spend riotously

(130) To make a person  
look sick = make  
a person very stupid  
and annoy him.

(131) A rough card =  
rough person

(132) to be nuts on

a person = to be  
occupied with a person,  
may be ~~or~~ amiable or  
not

(133) to be spooney  
= to be in love

(134) to spoon = to  
love and kiss.

(135) to be mashed =  
to love

(136) A mash = a person  
in love with one  
(大勢付 恋用 53 係)

(137) A pondulicks =  
money  
(~~金~~ 貯蓄)

(138) A shot in the  
locker = something  
in reserve

(139) A capper = police



man  
(140) Tomie Atokins =  
Soldiers

(141) Jack Tar = sailor

(142) A fat head = ~~fat~~  
stupid

(143) to bite off more  
than you can chew  
= undertake more  
than you can carry

(144) to strike oil =  
to be successful; to  
make a lucky find

(145) to go to blazes =  
go to the hell (i. K<sub>2</sub>)  
去 到 9 3/4 也)

(146) An outsider =  
cad

(147) redme = an  
exclamation (devil's)

(148) to have the blues =  
to be pined.

(149) A tart = prostitute

(150) blue funk = very  
much afraid

(151) to cut it fine =  
to manage things just  
as wanted.

(152) to cut your coat  
according to your cloth  
= to make the best  
things.

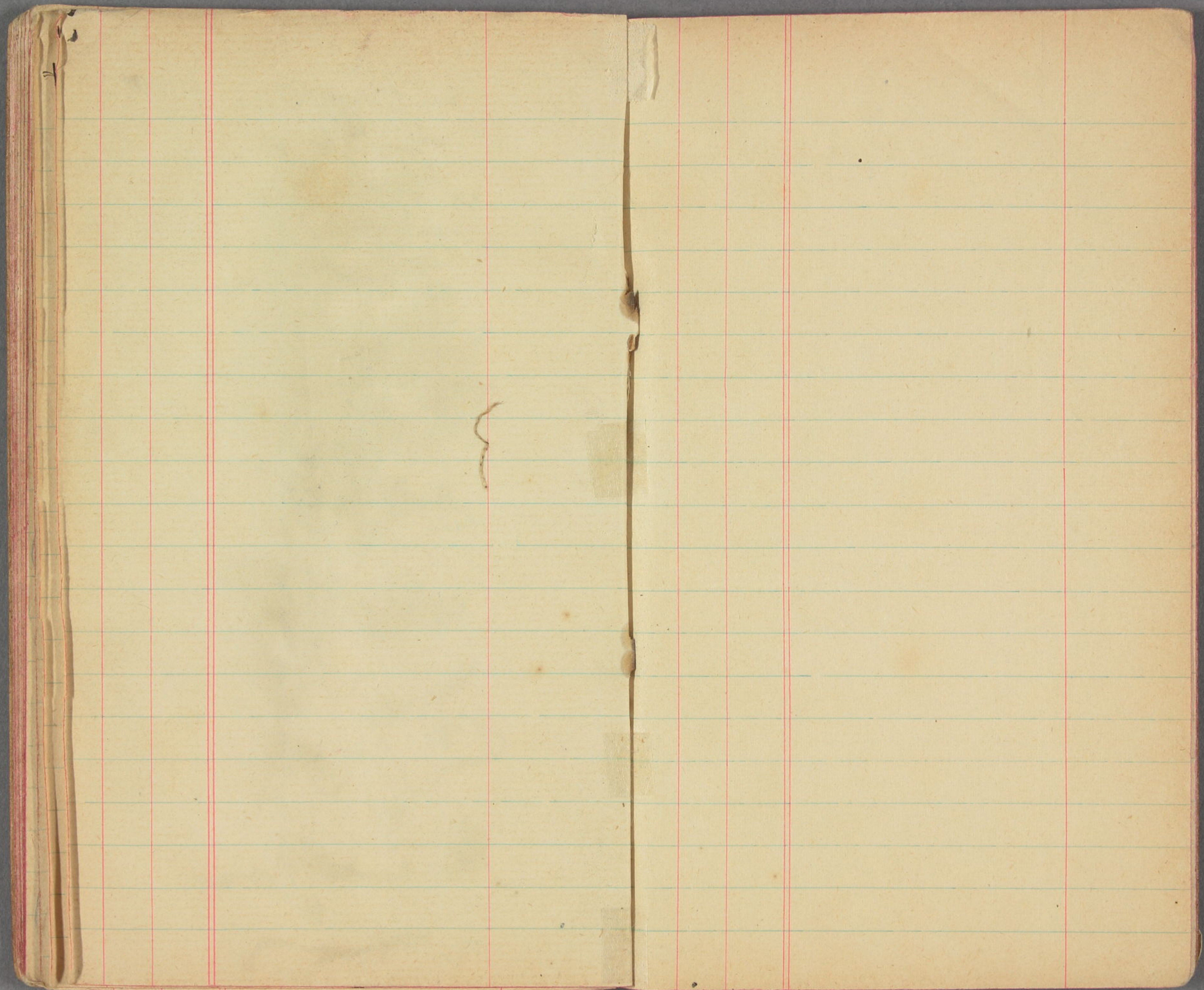


六日平

Handwritten cursive text on the left page, consisting of approximately 12 vertical columns of characters.

Handwritten cursive text on the right page, consisting of approximately 12 vertical columns of characters.







36.20 pf

2/12  
2/12  
2/12  
pf

36.20  
- 30.90

5.30 pf

15.44

3.59

11.85

~~4.30~~

2.15 2/12  
13.29  
15.44

~~18.18~~

13.14 2/12

13.29 2/12

26.43

18.18 2/12

44.61



4/576/1.44  
 11.70  
 13.14  
 1.25

13.14  
 13.29  
 13.29  
 1.25

~~13.14~~  
~~5.20~~  
~~11.94~~

13.04  
 5.14  
 18.18

61.90  
 - 5.96  
 56.14  
 - 2.20  
 53.94  
 - 1.5  
 52.44  
 + 2.70(10)

5/5849/11.70  
 + 1.20  
 11.90  
 11.90  
 11.90



	61.90	20/80	九
②	4.96 (2人)		分
	<u>56.94</u>		
	80 (2人)		
	<u>56.14</u>	4.96	
	20 (1人)	80	
	<u>55.94</u>	4   5.76	
	15 (2人)	17	
	<u>55.79</u>	16	
	2.90	16	
	<u>57.58.49</u>	11.90	
	8		
	<u>5</u>		
	34		
	<u>30</u>		
	49		

Accts	5 (10)	
Games	10	
Table	15	
Mints	5	12
Bad	5	1.60
Tea	5	<u>10.40</u>
	45	5.20

	m.	九
	5.60	分
	<del>1.50</del>	
m.		
家		
板		



2.70 加工—  
 32.80 支那柳泥  
 5.00 祝儀(長崎)  
 19.10 野村松  
 3.00 合巻代  
 1.40 合巻代  
 + 0.75 酒代  
 4/62.95 / 15.74 新  
 一人分

投家	若口	新川
<del>5.30</del>	<del>30.00</del>	<del>20.00</del>
<del>(長崎)</del>	<del>(長崎)</del>	<del>(長崎)</del>
<del>1.00</del>	<del>15.74</del>	<del>1.00</del>
<del>(長崎)</del>	<del>14.26</del>	<del>(長崎)</del>
<del>4.50</del>		<del>19.00</del>
<del>+ 15.74</del>		<del>15.74</del>
<del>20.04</del>		<del>3.26</del>
<del>(長崎)</del>		<del>(長崎)</del>

~~20.04~~  
~~3.96~~  


---

~~24.00~~  
 1.5 三 2 家  
 1.5 十 新 松  
 1.5 3 日 乙 1

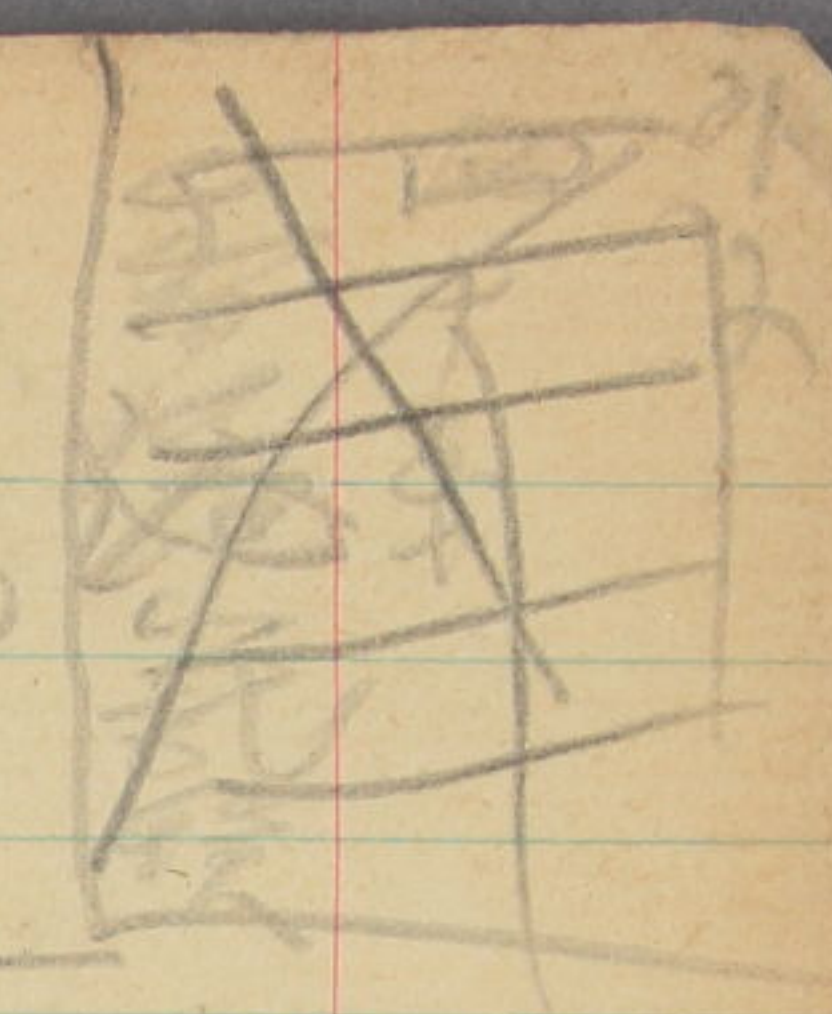
~~14.26~~  
~~3.96~~  


---

~~10.80~~ 長崎  
 3.26 長崎  
 1.88 長崎  


---

 5.14  
 1.5 十 新 松  
 1.5 3 日 乙 1





course not, but you  
know I have read  
it in books, and  
studied especially about  
all about

Don and Sam  
(A Japanese place)

Seem: A Japanese park.

A Japanese young lady  
sitting on a bench; on  
the opposite bench  
the Japanese gentleman  
discussing the Japanese  
journalist.

Elder gentleman: O yes,  
I know such a lot of  
green things about them!

Japanese girls are  
really funny little things.  
Younger gentleman: But  
... didn't you say you  
haven't been in this  
country before?

E. O. yes, no of



**CALENDAR FOR 1905.**

JANUARY.	FEBRUARY.	MARCH.	APRIL.
S. 1 8 15 22 29	S. 5 12 19 26	S. 5 12 19 26	S. 2 9 16 23 30
M. 2-9 16 23 30	M. 6 13 20 27	M. 6 13 20 27	M. 3 10 17 24
T. 3 10 17 24 31	T. 7 14 21 28	T. 7 14 21 28	T. 4 11 18 25
W. 4 11 18 25	W. 1 8 15 22	W. 1 8 15 22	W. 5 12 19 26
T. 5 12 19 26	T. 2 9 16 23	T. 2 9 16 23	T. 6 13 20 27
F. 6 13 20 27	F. 3 10 17 24	F. 3 10 17 24	F. 7 14 21 28
S. 7 14 21 28	S. 4 11 18 25	S. 4 11 18 25	S. 8 15 22 29
S. 3 10 17 24	S. 1 8 15 22 29	S. 1 8 15 22 29	S. 5 12 19 26
M. 4 11 18 25	M. 2 9 16 23 30	M. 2 9 16 23 30	M. 3 10 17 24 31
T. 5 12 19 26	T. 3 10 17 24 31	T. 3 10 17 24 31	T. 4 11 18 25
W. 6 13 20 27	W. 4 11 18 25	W. 4 11 18 25	W. 5 12 19 26
T. 7 14 21 28	T. 5 12 19 26	T. 5 12 19 26	T. 6 13 20 27
W. 8 15 22 29	W. 6 13 20 27	W. 6 13 20 27	W. 7 14 21 28
T. 9 16 23 30	T. 7 14 21 28	T. 7 14 21 28	T. 8 15 22 29
F. 10 17 24 31	F. 8 15 22 29	F. 8 15 22 29	F. 9 16 23 30
S. 11 18 25	S. 9 16 23 30	S. 9 16 23 30	S. 10 17 24 31
S. 7 14 21 28	S. 5 12 19 26	S. 5 12 19 26	S. 2 9 16 23 30
M. 8 15 22 29	M. 6 13 20 27	M. 6 13 20 27	M. 3 10 17 24 31
T. 9 16 23 30	T. 7 14 21 28	T. 7 14 21 28	T. 4 11 18 25
W. 10 17 24 31	W. 8 15 22 29	W. 8 15 22 29	W. 5 12 19 26
T. 11 18 25	T. 9 16 23 30	T. 9 16 23 30	T. 6 13 20 27
F. 12 19 26	F. 10 17 24 31	F. 10 17 24 31	F. 7 14 21 28
S. 13 20 27	S. 11 18 25	S. 11 18 25	S. 8 15 22 29
S. 8 15 22 29	S. 5 12 19 26	S. 5 12 19 26	S. 2 9 16 23 30
M. 9 16 23 30	M. 6 13 20 27	M. 6 13 20 27	M. 3 10 17 24 31
T. 10 17 24 31	T. 7 14 21 28	T. 7 14 21 28	T. 4 11 18 25
W. 11 18 25	W. 8 15 22 29	W. 8 15 22 29	W. 5 12 19 26
T. 12 19 26	T. 9 16 23 30	T. 9 16 23 30	T. 6 13 20 27
F. 13 20 27	F. 10 17 24 31	F. 10 17 24 31	F. 7 14 21 28
S. 14 21 28	S. 11 18 25	S. 11 18 25	S. 8 15 22 29
S. 9 16 23 30	S. 6 13 20 27	S. 6 13 20 27	S. 3 10 17 24 31
M. 10 17 24 31	M. 7 14 21 28	M. 7 14 21 28	M. 4 11 18 25
T. 11 18 25	T. 8 15 22 29	T. 8 15 22 29	T. 5 12 19 26
W. 12 19 26	W. 9 16 23 30	W. 9 16 23 30	W. 6 13 20 27
T. 13 20 27	T. 10 17 24 31	T. 10 17 24 31	T. 7 14 21 28
F. 14 21 28	F. 11 18 25	F. 11 18 25	F. 8 15 22 29
S. 15 22 29	S. 12 19 26	S. 12 19 26	S. 9 16 23 30
S. 10 17 24	S. 7 14 21 28	S. 7 14 21 28	S. 4 11 18 25
M. 11 18 25	M. 8 15 22 29	M. 8 15 22 29	M. 5 12 19 26
T. 12 19 26	T. 9 16 23 30	T. 9 16 23 30	T. 6 13 20 27
W. 13 20 27	W. 10 17 24 31	W. 10 17 24 31	W. 7 14 21 28
T. 14 21 28	T. 11 18 25	T. 11 18 25	T. 8 15 22 29
F. 15 22 29	F. 12 19 26	F. 12 19 26	F. 9 16 23 30
S. 16 23 30	S. 13 20 27	S. 13 20 27	S. 10 17 24 31
S. 11 18 25	S. 8 15 22 29	S. 8 15 22 29	S. 3 10 17 24 31
M. 12 19 26	M. 9 16 23 30	M. 9 16 23 30	M. 4 11 18 25
T. 13 20 27	T. 10 17 24 31	T. 10 17 24 31	T. 5 12 19 26
W. 14 21 28	W. 11 18 25	W. 11 18 25	W. 6 13 20 27
T. 15 22 29	T. 12 19 26	T. 12 19 26	T. 7 14 21 28
F. 16 23 30	F. 13 20 27	F. 13 20 27	F. 8 15 22 29
S. 17 24 31	S. 14 21 28	S. 14 21 28	S. 9 16 23 30
S. 12 19 26	S. 9 16 23 30	S. 9 16 23 30	S. 4 11 18 25
M. 13 20 27	M. 10 17 24 31	M. 10 17 24 31	M. 5 12 19 26
T. 14 21 28	T. 11 18 25	T. 11 18 25	T. 6 13 20 27
W. 15 22 29	W. 12 19 26	W. 12 19 26	W. 7 14 21 28
T. 16 23 30	T. 13 20 27	T. 13 20 27	T. 8 15 22 29
F. 17 24 31	F. 14 21 28	F. 14 21 28	F. 9 16 23 30
S. 18 15 22 29	S. 15 22 29	S. 15 22 29	S. 10 17 24 31
F. 14 21 28	F. 11 18 25	F. 11 18 25	F. 7 14 21 28
T. 15 22 29	T. 12 19 26	T. 12 19 26	T. 8 15 22 29
W. 16 23 30	W. 13 20 27	W. 13 20 27	W. 9 16 23 30
T. 17 24 31	T. 14 21 28	T. 14 21 28	T. 10 17 24 31
W. 18 15 22 29	W. 15 22 29	W. 15 22 29	W. 6 13 20 27
F. 19 26	F. 16 23 30	F. 16 23 30	F. 7 14 21 28
T. 20 27	T. 17 24 31	T. 17 24 31	T. 8 15 22 29
W. 21 28	W. 18 15 22 29	W. 18 15 22 29	W. 9 16 23 30
T. 22 29	T. 19 26	T. 19 26	T. 10 17 24 31
F. 23 30	F. 20 27	F. 20 27	F. 11 18 25
S. 24 31	S. 21 28	S. 21 28	S. 12 19 26
S. 19 26	S. 16 23 30	S. 16 23 30	S. 7 14 21 28
M. 20 27	M. 17 24 31	M. 17 24 31	M. 8 15 22 29
T. 21 28	T. 18 15 22 29	T. 18 15 22 29	T. 9 16 23 30
W. 22 29	W. 19 26	W. 19 26	W. 10 17 24 31
T. 23 30	T. 20 27	T. 20 27	T. 11 18 25
F. 24 31	F. 21 28	F. 21 28	F. 12 19 26
S. 25 26	S. 22 29	S. 22 29	S. 13 20 27
S. 20 27	S. 17 24 31	S. 17 24 31	S. 8 15 22 29
M. 21 28	M. 18 15 22 29	M. 18 15 22 29	M. 9 16 23 30
T. 22 29	T. 19 26	T. 19 26	T. 10 17 24 31
W. 23 30	W. 20 27	W. 20 27	W. 11 18 25
T. 24 31	T. 21 28	T. 21 28	T. 12 19 26
W. 25 26	W. 22 29	W. 22 29	W. 13 20 27
T. 26 27	T. 23 30	T. 23 30	T. 14 21 28
W. 27 28	W. 24 31	W. 24 31	W. 15 22 29
T. 28 29	T. 25 26	T. 25 26	T. 16 23 30
F. 29 30	F. 26 27	F. 26 27	F. 17 24 31
S. 30 31	S. 27 28	S. 27 28	S. 18 15 22 29
S. 26 27	S. 23 30	S. 23 30	S. 9 16 23 30
M. 27 28	M. 24 31	M. 24 31	M. 10 17 24 31
T. 28 29	T. 25 26	T. 25 26	T. 11 18 25
W. 29 30	W. 26 27	W. 26 27	W. 12 19 26
T. 30 31	T. 27 28	T. 27 28	T. 13 20 27
W. 31 30	W. 28 29	W. 28 29	W. 14 21 28
T. 32 29	T. 29 30	T. 29 30	T. 15 22 29
F. 33 30	F. 30 31	F. 30 31	F. 16 23 30
S. 34 31	S. 31 32	S. 31 32	S. 17 24 31

**CALENDAR FOR 1906.**



Ra  
~~Sydney~~  
 Ra  
 2.70  
 19.0  
 3.40  
 32.10  
 00.50  
 5.295  
 20  
 80.00





expansion (normal)

L. J. ...

... (normal) ...

...

... (normal) ...