

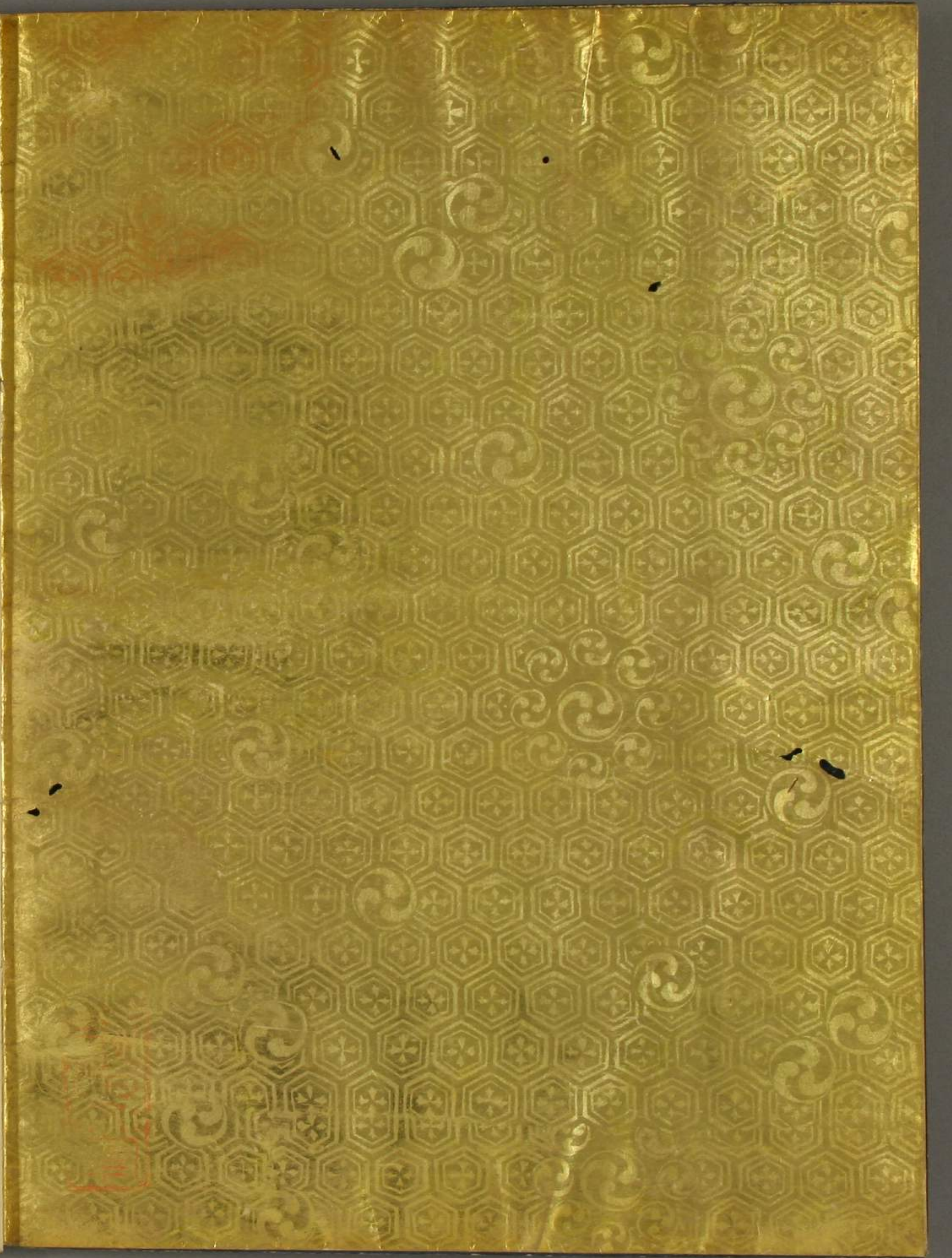


和18
1836
2止





Red square seal impression with Chinese characters in seal script.



1836
2

黄埃散漫同青黛

黄埃散漫同青黛
白草微茫似绿苔
杨柳青青江水平
闻郎江上踏歌声
东边日出西边雨
道是无晴却有情

于横策行记

于横策行记
于横策行记
于横策行记
于横策行记
于横策行记
于横策行记
于横策行记
于横策行记
于横策行记
于横策行记

Handwritten musical notation on the right page, consisting of a single staff with a treble clef and a key signature of one flat. The notation is written in a cursive, handwritten style.

新編上下ノ歌

Handwritten musical notation on the left page, consisting of a single staff with a treble clef and a key signature of one flat. The notation is written in a cursive, handwritten style.

旗旗ノ歌

Handwritten musical notation on the left page, consisting of a single staff with a treble clef and a key signature of one flat. The notation is written in a cursive, handwritten style.

新編和歌集

あはれをいふはかたじけなく
あはれをいふはかたじけなく
あはれをいふはかたじけなく
あはれをいふはかたじけなく
あはれをいふはかたじけなく
あはれをいふはかたじけなく
あはれをいふはかたじけなく
あはれをいふはかたじけなく
あはれをいふはかたじけなく
あはれをいふはかたじけなく



Handwritten text in cursive script, consisting of approximately six lines of text.

Handwritten text in cursive script, consisting of approximately six lines of text. The text is written in a fluid, connected style.

Handwritten text in a cursive script, likely a historical document or letter. The text is written in a single column on the left page of an open book. The script is highly stylized and difficult to decipher, but appears to be a form of early modern cursive. The right page is blank.

Handwritten musical notation on the left page, consisting of a single staff with a treble clef and a key signature of one flat. The notation is written in a cursive, handwritten style. There are some yellowish stains on the page, particularly in the middle and lower sections.

Handwritten musical notation on the right page, consisting of a single staff with a treble clef and a key signature of one flat. The notation is written in a cursive, handwritten style. There are some yellowish stains on the page, particularly in the middle and lower sections.

Handwritten text in a cursive script, likely a list or account. The text is written in black ink on aged paper. It begins with a long horizontal line, followed by several lines of text. The script is highly stylized and difficult to decipher. There are some red markings, possibly initials or corrections, interspersed within the text.

Handwritten text in a cursive script, continuing from the previous section. The text is written in black ink on aged paper. It begins with a long horizontal line, followed by several lines of text. The script is highly stylized and difficult to decipher. There are some red markings, possibly initials or corrections, interspersed within the text.

Handwritten text in cursive script, likely a letter or document, written on the left page of an open book. The text is dense and fills most of the page.

Handwritten text in cursive script, likely a letter or document, written on the right page of an open book. The text is dense and fills most of the page.

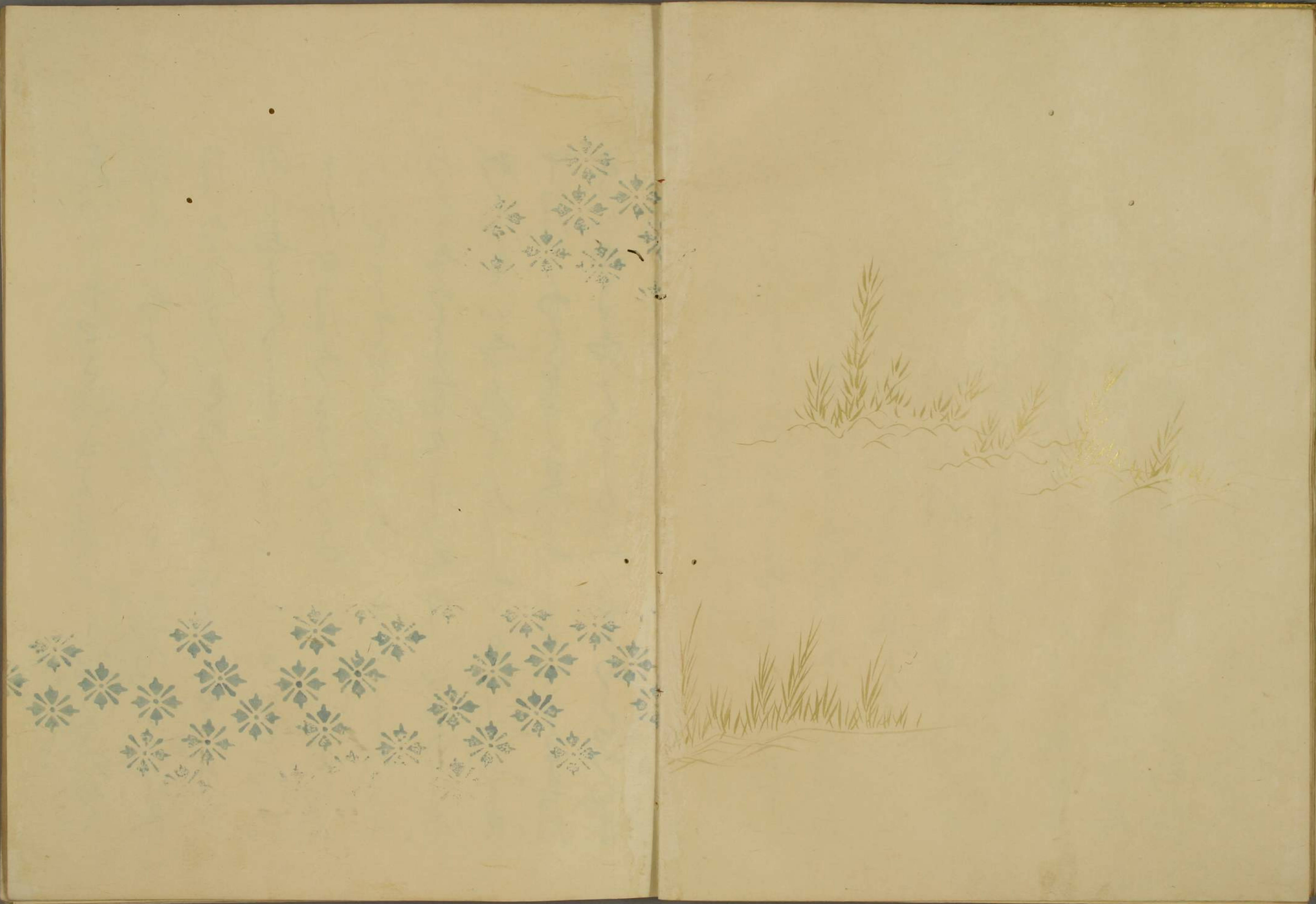
Handwritten text in a cursive script, likely Mongolian or Tibetan, consisting of approximately 12 lines of text.

天旋地轉回竟取

Handwritten text in a cursive script, likely Mongolian or Tibetan, consisting of approximately 12 lines of text.

Handwritten text in a cursive script, likely a personal letter or diary entry. The text is written in a fluid, connected style across approximately 12 lines. The ink is dark and the paper shows some signs of age and staining.

Handwritten text in a cursive script, continuing from the previous page. The text is written in a fluid, connected style across approximately 12 lines. The ink is dark and the paper shows some signs of age and staining.



くわつてつるふもせつりくせり
うしとくふくはしくわさし
もつりしにのちのよみつるも
そつりしにのちのよみつるも
つりしにのちのよみつるも

不思玉顔空死麗君居相顧並泣衣
毛のさゆしにのちのよみつるも
よしとくふくはしくわさし
うしとくふくはしくわさし

東中郡 信馬守

くわつてつるふもせつりくせり
うしとくふくはしくわさし
もつりしにのちのよみつるも
そつりしにのちのよみつるも
つりしにのちのよみつるも
つりしにのちのよみつるも
つりしにのちのよみつるも
つりしにのちのよみつるも

Handwritten text in cursive script, likely a letter or a page from a manuscript. The text is written in a fluid, connected style.

新井如何石坂書

Handwritten text in cursive script, continuing the letter or manuscript page.




~~~~~  
~~~~~  
~~~~~  
~~~~~  
~~~~~  
~~~~~  
~~~~~

西交の花多秋草

~~~~~  
~~~~~  
~~~~~  
~~~~~  
~~~~~  
~~~~~  
~~~~~  
~~~~~  
~~~~~  
~~~~~

花重満路の石掃

~~~~~  
~~~~~  
~~~~~  
~~~~~  
~~~~~  
~~~~~  
~~~~~  
~~~~~

梨園中子白髪新

~~~~~  
~~~~~  
~~~~~  
~~~~~  
~~~~~  
~~~~~  
~~~~~  
~~~~~  
~~~~~

Handwritten text in a cursive script, likely a letter or a page from a manuscript. The text is written in dark ink on aged, yellowish paper. It consists of several lines of text, with some words appearing to be "Handwritten" and "Text".

Handwritten text in a cursive script, likely a letter or a page from a manuscript. The text is written in dark ink on aged, yellowish paper. It consists of several lines of text, with some words appearing to be "Handwritten" and "Text".

Handwritten text in a cursive script, likely a letter or a page from a manuscript. The text is written in dark ink on aged, yellowish paper. It consists of several lines of text, with some words appearing to be "Handwritten" and "Text".

神唐河造言歌

♪ 今も昔も同じく
♪ 昔も今も同じく
♪ 昔も今も同じく
♪ 昔も今も同じく
♪ 昔も今も同じく
♪ 昔も今も同じく
♪ 昔も今も同じく
♪ 昔も今も同じく
♪ 昔も今も同じく
♪ 昔も今も同じく



Handwritten text in a cursive script, likely a historical document or letter. The text is written in dark ink on aged, yellowish paper. It consists of approximately 12 lines of text, with some lines starting with a large initial letter. The script is highly stylized and characteristic of the 17th or 18th century.

Handwritten text in a cursive script, continuing from the previous page. The text is written in dark ink on aged, yellowish paper. It consists of approximately 12 lines of text, with some lines starting with a large initial letter. The script is highly stylized and characteristic of the 17th or 18th century.

Handwritten text in cursive script, likely a list or account, written on a page with a decorative floral border. The text is arranged in approximately 12 lines.

Handwritten text in cursive script, continuing from the previous page. The text is arranged in approximately 12 lines.

五輪歌抄長歌

~~~~~  
~~~~~  
~~~~~

孤枕枕五未成眠

~~~~~  
~~~~~  
~~~~~  
~~~~~  
~~~~~  
~~~~~  
~~~~~  
~~~~~

~~~~~  
~~~~~  
~~~~~  
~~~~~  
~~~~~

夕殿重苑界情色

~~~~~  
~~~~~  
~~~~~  
~~~~~  
~~~~~  
~~~~~  
~~~~~  
~~~~~

Handwritten cursive script on the left page, consisting of several lines of text.

結し早可欲櫻夫

Handwritten cursive script on the right side of the left page, continuing the text.

Handwritten cursive script on the right page, consisting of several lines of text.

Handwritten text in a cursive script, likely a list or account, consisting of several lines of text.

Handwritten text in a cursive script, likely a list or account, consisting of several lines of text.

Handwritten text in a cursive script, likely a list or account, consisting of several lines of text.

Handwritten text in a cursive script, likely a list or account, consisting of several lines of text.

Handwritten text in a cursive script, likely a list or account, consisting of several lines of text.

Handwritten text in a cursive script, likely a list or account, consisting of several lines of text.

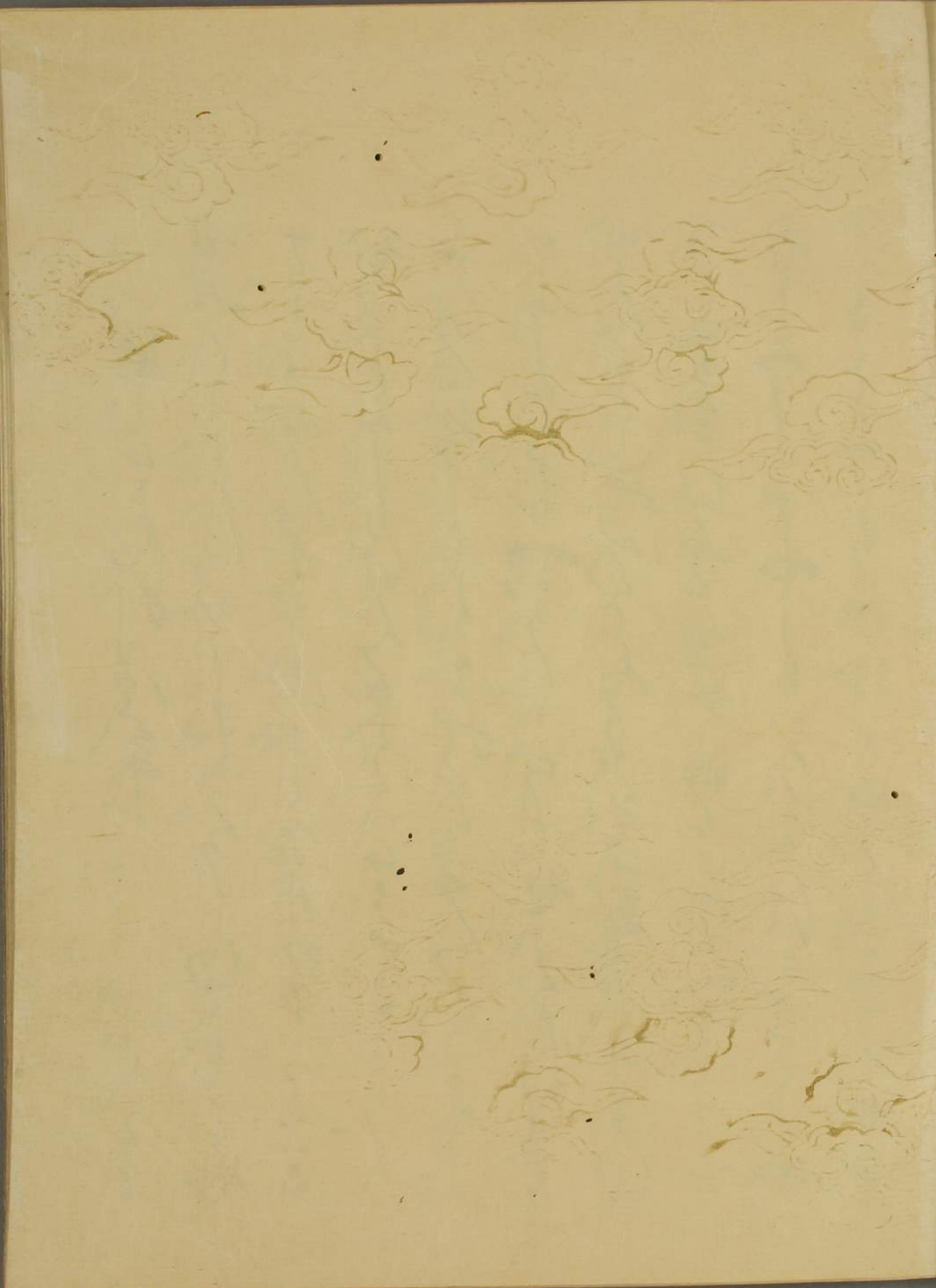


從子卷之冷齋記

予嘗聞古人之於書也
其於筆墨之間
必有其意存焉
而後可以言書
夫書者心之迹也
心之所至筆亦隨之
故曰心手合一
此書之要也
予嘗觀古人之書
其筆力雄健
其神韻飄揚
其氣貫注
其意深遠
此予所慕也
今予之於書
不過求其筆力之雄健
而不知其神韻之飄揚
其氣貫注
其意深遠
此予所愧也

從子卷之冷齋記

予嘗聞古人之於書也
其於筆墨之間
必有其意存焉
而後可以言書
夫書者心之迹也
心之所至筆亦隨之
故曰心手合一
此書之要也
予嘗觀古人之書
其筆力雄健
其神韻飄揚
其氣貫注
其意深遠
此予所慕也
今予之於書
不過求其筆力之雄健
而不知其神韻之飄揚
其氣貫注
其意深遠
此予所愧也



Handwritten text in a cursive script, likely Japanese, is written vertically on the right page. The text is arranged in several columns, with some characters appearing to be part of a larger phrase or name. The ink is dark and the script is fluid and elegant. The text is positioned in the lower half of the page, with some faint floral motifs visible in the background behind it.

鷲の生死列傳年

鷲の生死列傳年
一、鷲の生れは、
二、鷲の死は、
三、鷲の生れは、
四、鷲の死は、
五、鷲の生れは、
六、鷲の死は、
七、鷲の生れは、
八、鷲の死は、
九、鷲の生れは、
十、鷲の死は、

一、鷲の生れは、
二、鷲の死は、
三、鷲の生れは、
四、鷲の死は、
五、鷲の生れは、
六、鷲の死は、
七、鷲の生れは、
八、鷲の死は、
九、鷲の生れは、
十、鷲の死は、

鷲の生死列傳年

鷲の生死列傳年
一、鷲の生れは、
二、鷲の死は、
三、鷲の生れは、
四、鷲の死は、
五、鷲の生れは、
六、鷲の死は、
七、鷲の生れは、
八、鷲の死は、
九、鷲の生れは、
十、鷲の死は、

Handwritten cursive script on the left page of an open book. The text is written in a fluid, continuous style across approximately ten lines.

Handwritten cursive script on the right page of an open book. The text is written in a fluid, continuous style across approximately ten lines.

为感志之展物界

德之精神之竟也

ふとせし人の心もくちかえ
ふらふらとせんよはれんよ
りらりら

柳川奴気奇如電

さし人の心もくちかえ
ふらふらとせんよはれんよ
りらりら



Handwritten text in cursive script, likely a letter or a page from a manuscript. The text is written on aged, yellowed paper and is surrounded by faint floral decorations. The script is dense and flowing, characteristic of 17th or 18th-century handwriting. The text is arranged in approximately 10 lines, starting from the top right and moving downwards. The words are difficult to decipher due to the cursive style, but some recognizable words like "I have" and "I am" can be seen. The text appears to be a personal communication or a formal letter.

橋殿玲瓏の書起

うさかんつらふいてんくくくわうく
くのでいさしさいさくうううう
とととととととととととととと
とととととととととととととと
てゆらめいてんかきんかきん

中津舟多記の

しんをくくくくくくくくくく
しんをくくくくくくくくくく
あははははははははははははは

とせんあやめ

中津舟多記の

くくくくくくくくくくくくく
くくくくくくくくくくくくく
くくくくくくくくくくくくく
くくくくくくくくくくくくく
くくくくくくくくくくくくく
くくくくくくくくくくくくく
くくくくくくくくくくくくく

あのみかきり

高層記鶴象の

さあ人のていさあはくくくくく

持教小玉箱双巻

~~~~~  
~~~~~  
~~~~~  
~~~~~  
~~~~~  
~~~~~  
~~~~~  
~~~~~  
~~~~~  
~~~~~

同通漢家天子使

~~~~~







Handwritten musical notation on the right page, consisting of several lines of notes on a staff.

用古の祝詞一奉

Handwritten musical notation on the right page, continuing from the previous section.

祝詞需入業州交書

Handwritten musical notation on the left page, starting with the section header.

Handwritten musical notation on the left page, continuing from the previous section.



玉音津音、淑桐干

しるしをいひてはつくはやくはやく  
いひてはやくはやくはやくはやく  
いひてはやくはやくはやくはやく  
いひてはやくはやくはやくはやく

音流、竹音、音、音

いひてはやくはやくはやくはやく  
いひてはやくはやくはやくはやく  
いひてはやくはやくはやくはやく  
いひてはやくはやくはやくはやく

合情、淑、音、謝、音、音

いひてはやくはやくはやくはやく  
いひてはやくはやくはやくはやく  
いひてはやくはやくはやくはやく  
いひてはやくはやくはやくはやく  
いひてはやくはやくはやくはやく  
いひてはやくはやくはやくはやく  
いひてはやくはやくはやくはやく  
いひてはやくはやくはやくはやく  
いひてはやくはやくはやくはやく  
いひてはやくはやくはやくはやく

一、音、音、音、音、音

~~~~~  
~~~~~  
~~~~~  
~~~~~  
~~~~~  
~~~~~

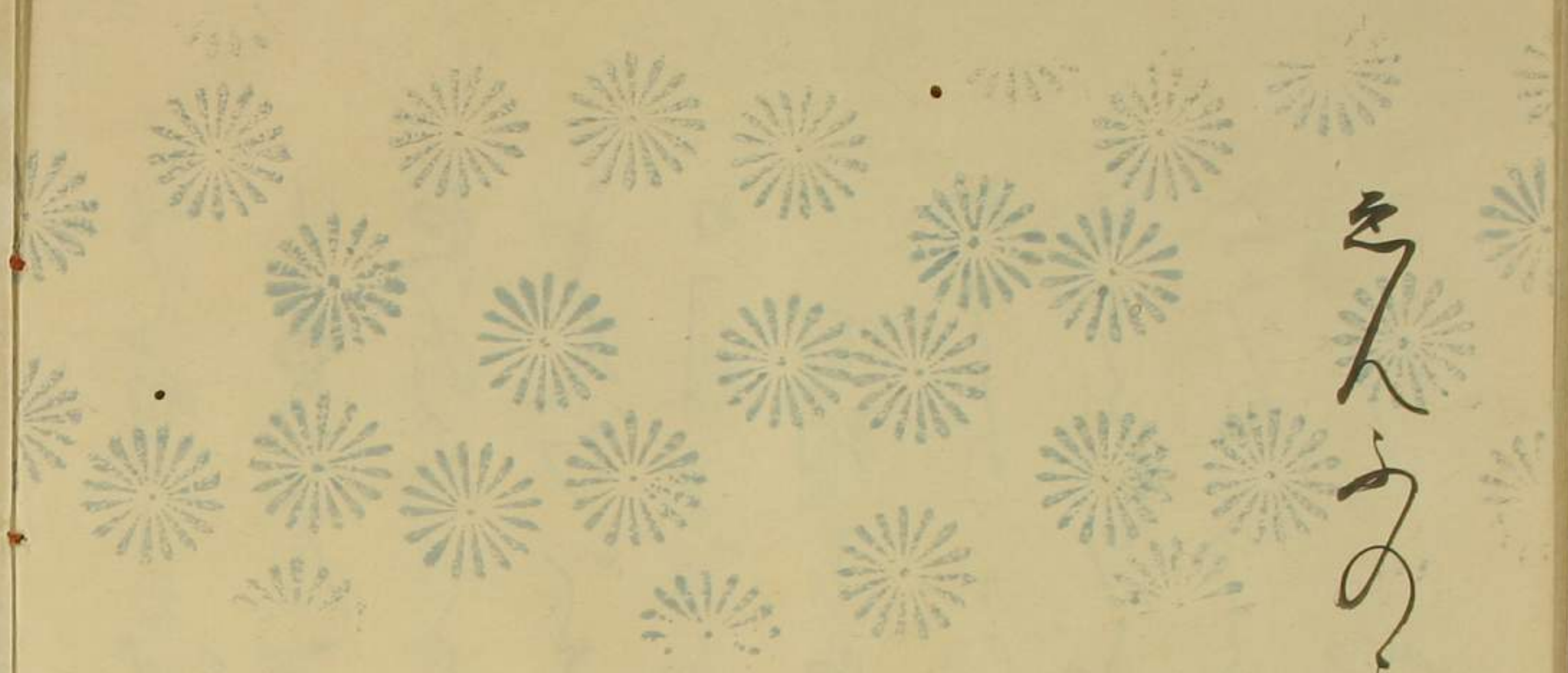
昭陽殿裏  
~~~~~

~~~~~  
~~~~~  
~~~~~  
~~~~~  
~~~~~  
~~~~~

~~~~~  
~~~~~  
~~~~~  
~~~~~  
~~~~~  
~~~~~

田狹中人
~~~~~

~~~~~  
~~~~~  
~~~~~  
~~~~~  
~~~~~  
~~~~~



Handwritten text in cursive script, oriented vertically on the right page. The text is written in dark ink and appears to be a list or a series of entries. The characters are fluid and characteristic of 18th or 19th-century handwriting.

作得意物衣源帖

~~~~~  
~~~~~  
~~~~~  
~~~~~  
~~~~~  
~~~~~  
~~~~~  
~~~~~  
~~~~~  
~~~~~

田合全段素押

~~~~~  
~~~~~  
~~~~~  
~~~~~  
~~~~~  
~~~~~  
~~~~~  
~~~~~  
~~~~~  
~~~~~

~~~~~  
~~~~~  
~~~~~  
~~~~~  
~~~~~  
~~~~~  
~~~~~  
~~~~~  
~~~~~  
~~~~~

銀百一股合一扇

~~~~~  
~~~~~  
~~~~~  
~~~~~  
~~~~~  
~~~~~  
~~~~~  
~~~~~  
~~~~~  
~~~~~



Handwritten musical notation on the right page, consisting of a single melodic line with various note values and rests.

段等長令合合相

Handwritten musical notation on the left side of the right page, continuing the melodic line.

Handwritten musical notation at the top of the left page.

段令心無令相等

Handwritten musical notation on the right side of the left page.

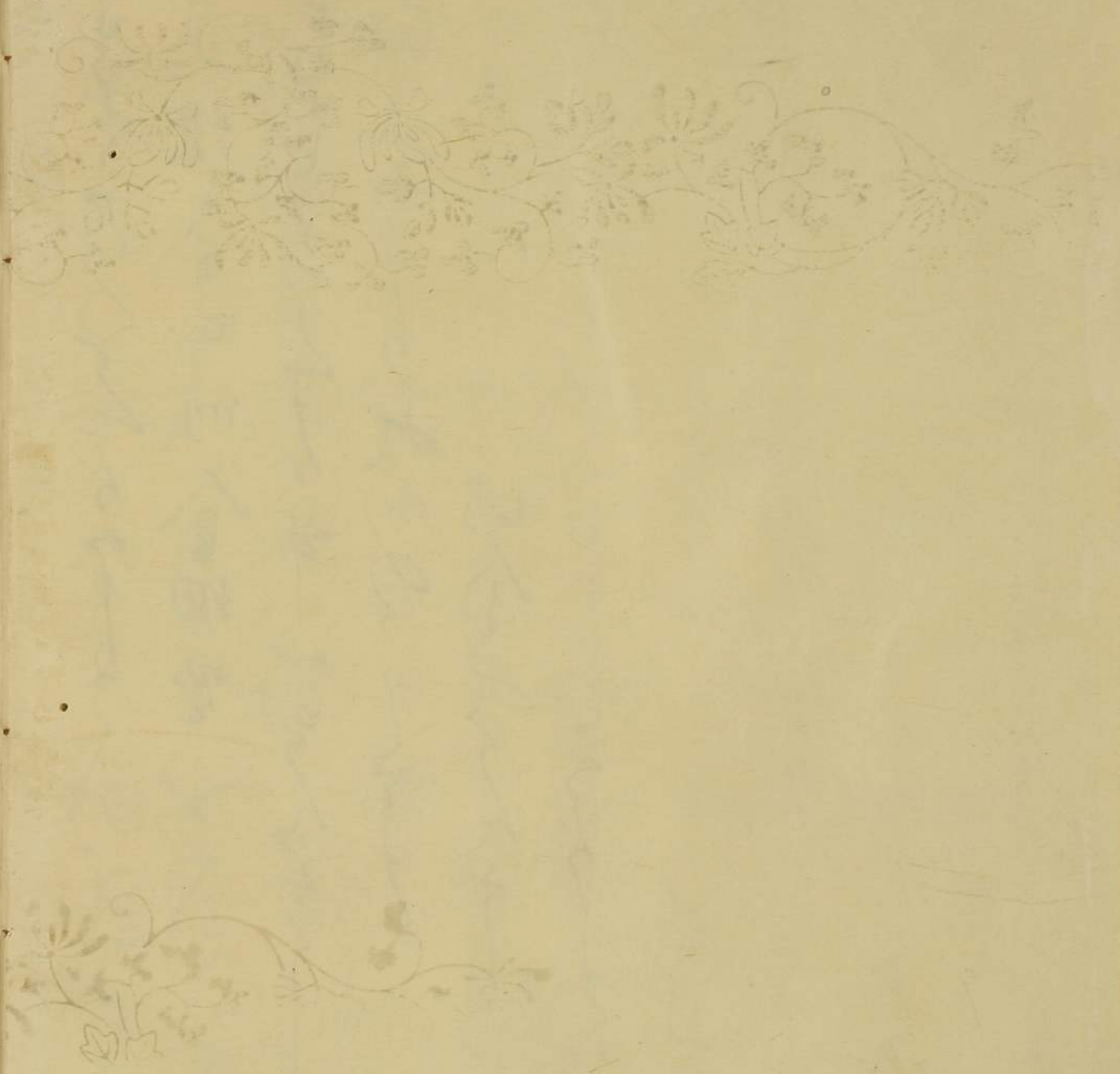
Handwritten musical notation on the left side of the left page.

至人不可言相見

至人不可言相見  
至人不可言相見  
至人不可言相見  
至人不可言相見  
至人不可言相見  
至人不可言相見  
至人不可言相見  
至人不可言相見  
至人不可言相見  
至人不可言相見

竹引鷹翅を音向

竹引鷹翅を音向  
竹引鷹翅を音向  
竹引鷹翅を音向  
竹引鷹翅を音向  
竹引鷹翅を音向  
竹引鷹翅を音向  
竹引鷹翅を音向  
竹引鷹翅を音向  
竹引鷹翅を音向  
竹引鷹翅を音向



Handwritten text in cursive script, likely a letter or document, spanning the right page of the manuscript.

Handwritten text in cursive script, continuing from the right page or as a separate entry on the left page.

Handwritten text in cursive script, possibly a signature or a specific note.

Handwritten text in cursive script, continuing the main body of the document.

Handwritten text in cursive script, possibly a date or a specific reference.

Handwritten text in cursive script, likely the closing or a final note of the document.



Went to the Museum in St. Petersburg  
to see the collection of minerals  
Since the collection is in the  
Museum in St. Petersburg  
to see the collection of minerals  
to see the collection of minerals  
to see the collection of minerals  
to see the collection of minerals





