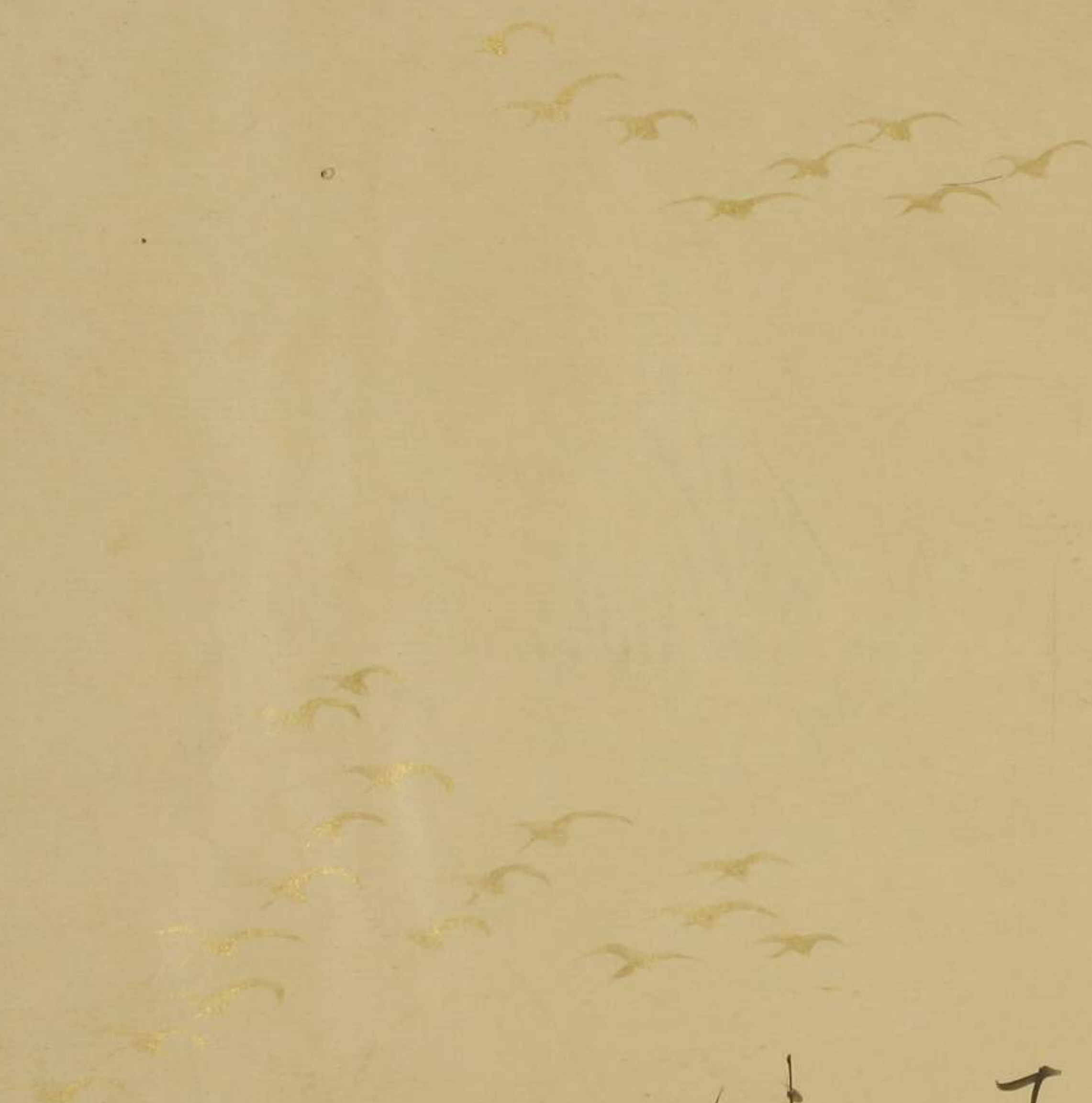


Handwritten text in a cursive script, likely a historical document or letter. The text is written in a single column on the left page of an open manuscript. The script is highly stylized and difficult to decipher, but appears to be a form of early modern cursive. The ink is dark and the paper is aged and yellowed.

Handwritten text in a cursive script, likely a historical document or letter. The text is written in a single column on the right page of an open manuscript. The script is highly stylized and difficult to decipher, but appears to be a form of early modern cursive. The ink is dark and the paper is aged and yellowed.

Handwritten text in Arabic script, consisting of several lines of cursive writing.



Handwritten text in Arabic script, consisting of several lines of cursive writing.

Handwritten text in Arabic script, consisting of several lines of cursive writing.



Handwritten text in cursive script, likely a list or account, spanning the left page of the manuscript.

Handwritten text in cursive script, likely a list or account, spanning the right page of the manuscript.

Handwritten text in a cursive script, likely Arabic or Persian, consisting of approximately 14 lines. The text is written in black ink on aged paper. The script is highly stylized and fluid, characteristic of the 'Nasta'liq' style. The lines are closely spaced and flow across the page. There are some faint decorative elements at the top of the page, including floral motifs in blue and green.

Handwritten text in a cursive script, likely Arabic or Persian, consisting of approximately 14 lines. The text is written in black ink on aged paper. The script is highly stylized and fluid, characteristic of the 'Nasta'liq' style. The lines are closely spaced and flow across the page. There are some faint decorative elements at the top of the page, including floral motifs in blue and green.

10

11

12
13
14
15
16
17
18
19
20
21
22
23
24
25
26
27
28
29
30
31
32
33
34
35
36
37
38
39
40
41
42
43
44
45
46
47
48
49
50
51
52
53
54
55
56
57
58
59
60
61
62
63
64
65
66
67
68
69
70
71
72
73
74
75
76
77
78
79
80
81
82
83
84
85
86
87
88
89
90
91
92
93
94
95
96
97
98
99
100

101
102
103
104
105
106
107
108
109
110
111
112
113
114
115
116
117
118
119
120
121
122
123
124
125
126
127
128
129
130
131
132
133
134
135
136
137
138
139
140
141
142
143
144
145
146
147
148
149
150
151
152
153
154
155
156
157
158
159
160
161
162
163
164
165
166
167
168
169
170
171
172
173
174
175
176
177
178
179
180
181
182
183
184
185
186
187
188
189
190
191
192
193
194
195
196
197
198
199
200

Handwritten text in a cursive script, likely a historical document or manuscript. The text is written in a single column on the left page of an open book. The script is highly stylized and difficult to decipher, but appears to be a form of early modern handwriting. The right page is blank.

Handwritten text in a cursive script, likely a letter or a page from a manuscript. The text is written in dark ink on aged, yellowish paper. The script is highly stylized and difficult to decipher. The text is arranged in approximately 12 lines, with some lines starting with a large initial letter. There are faint decorative flourishes in the background of the page.

Handwritten text in a cursive script, continuing from the previous page. The text is written in dark ink on aged, yellowish paper. The script is highly stylized and difficult to decipher. The text is arranged in approximately 12 lines, with some lines starting with a large initial letter. There are faint decorative flourishes in the background of the page.

Handwritten musical notation on the left page, consisting of a single staff with a treble clef and a key signature of one flat. The notation is written in a cursive, handwritten style, featuring various note values and rests.

Handwritten musical notation on the right page, consisting of a single staff with a treble clef and a key signature of one flat. The notation is written in a cursive, handwritten style, featuring various note values and rests. The page includes a decorative blue floral watermark in the background.

Handwritten text in a cursive script, likely a historical document or manuscript. The text is written in dark ink on aged, yellowish paper. It consists of approximately 12 lines of text, with some lines starting with a capital letter. The script is highly stylized and difficult to decipher without a key.

Handwritten text in a cursive script, continuing from the previous page. The text is written in dark ink on aged, yellowish paper. It consists of approximately 12 lines of text, with some lines starting with a capital letter. The script is highly stylized and difficult to decipher without a key.

Handwritten musical notation on the right page, consisting of a single staff with a treble clef and a key signature of one flat. The notation is written in a cursive, handwritten style.

長根寺

漢白文及和國

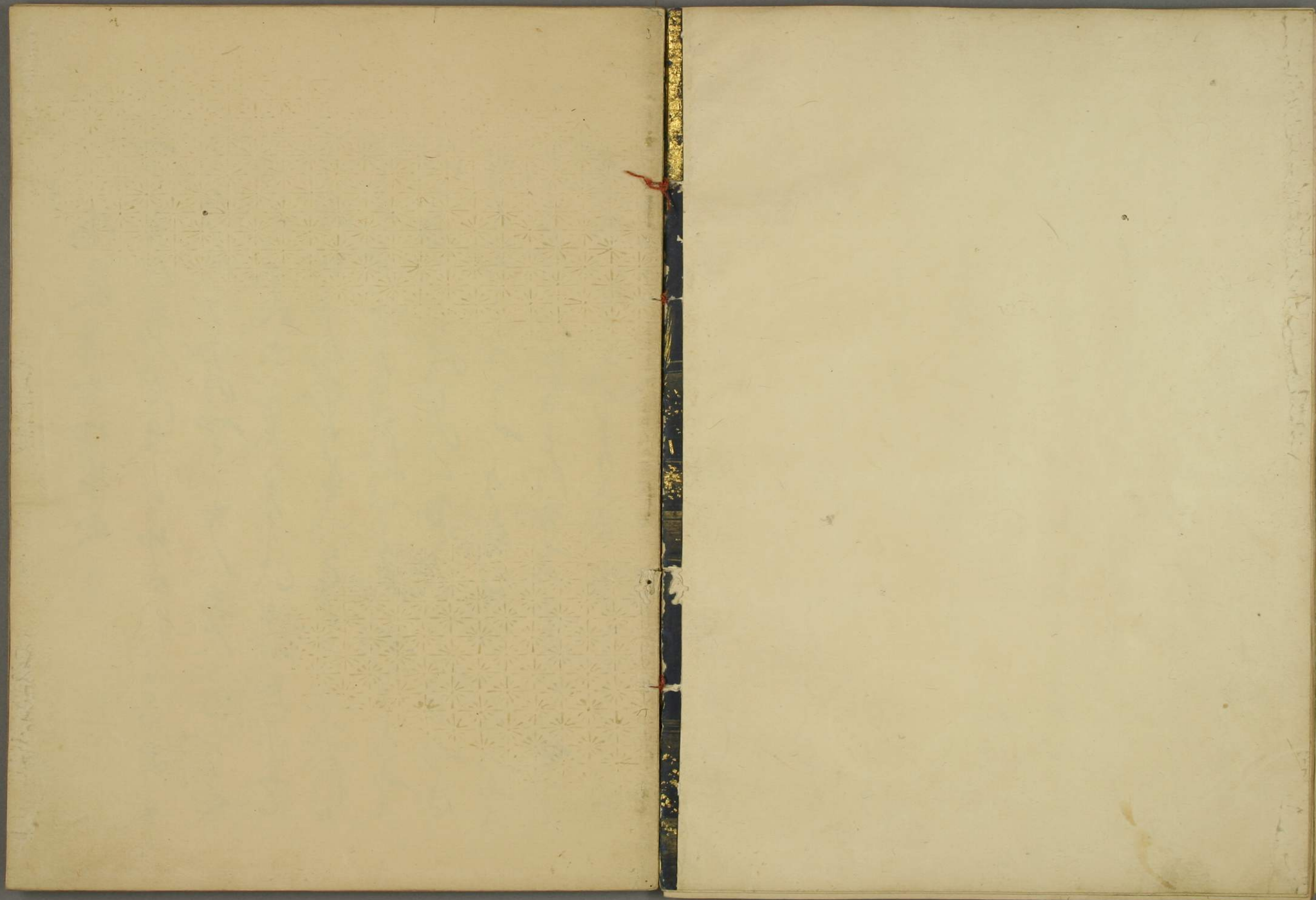
白文

Handwritten musical notation on the left page, consisting of a single staff with a treble clef and a key signature of one flat. The notation is written in a cursive, handwritten style.

Handwritten text in cursive script, consisting of several lines of characters.

Handwritten text in cursive script, consisting of several lines of characters.

Handwritten text in cursive script, consisting of several lines of characters.



楊家有女初长成

楊家有女初长成，
十五學成綉
一雙。天生麗質
難自棄，一朝
選在君王側。
回眸一笑百媚
生，六宮粉黛
無顏色。春寒
賜浴華清池，
光燭對嬋娟。
侍從馮諷
騎六馬，朝
朝出宮門。
五步一
朝朝，十步一
花開，六宮
粉黛無顏色。

天生麗質難自棄，
一朝選在君王側。
回眸一笑百媚生，
六宮粉黛無顏色。

卷五 漢宮曲 未識

漢宮曲
未識
卷五
漢宮曲
未識

天生麗質難自棄

Handwritten musical notation on the right page, consisting of a single staff with a treble clef and a key signature of one flat. The notation is written in a cursive style, featuring various note values and rests.

日物一巻百番生

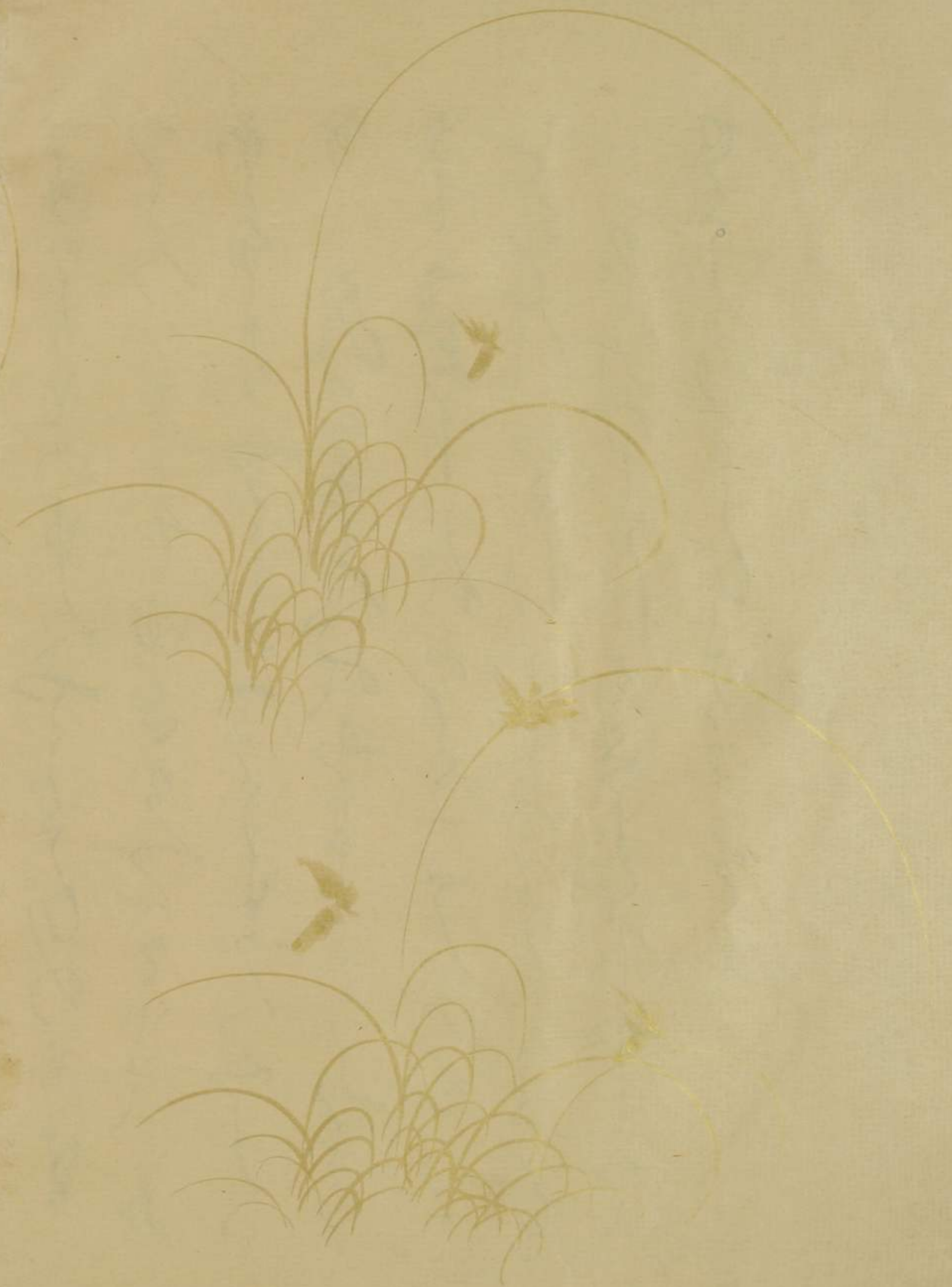
Handwritten musical notation on the left page, consisting of a single staff with a treble clef and a key signature of one flat. The notation is written in a cursive style, featuring various note values and rests. A vertical line of text is written in the left margin.

六交打ははを新也

Handwritten text in cursive script, spanning two pages. The text is written in dark ink on aged, yellowish paper. The right page features faint, repeating floral or starburst patterns in the background. The handwriting is fluid and characteristic of 18th-century cursive. The text appears to be a letter or a formal document, though the specific words are difficult to decipher due to the cursive style and fading. The text is arranged in approximately 12 lines across both pages.

Handwritten text in a cursive script, likely Arabic or Persian, arranged in approximately 12 vertical columns. The script is dense and fluid, with varying line heights and frequent connections between characters. The text is written on aged, yellowish paper.

Handwritten title or section header in a cursive script, positioned centrally between the two pages. It appears to be a single line of text, possibly indicating the subject of the adjacent page.



Handwritten text in cursive script, consisting of approximately 12 lines of text.

Handwritten text in cursive script, consisting of approximately 12 lines of text.

Handwritten musical notation on the right page, featuring a series of rhythmic patterns and notes. The notation is written in a cursive style, typical of early manuscript notation. The page is decorated with a faint, light blue floral pattern in the background.

Handwritten musical notation on the left page, continuing the series of rhythmic patterns and notes from the right page. The notation is written in a cursive style, typical of early manuscript notation. The page is decorated with a faint, light blue floral pattern in the background.

Handwritten musical notation on the left page, consisting of a single staff with a treble clef and a key signature of one flat. The notation is written in a cursive, handwritten style.

淨思投起嬌音

Handwritten musical notation on the right page, consisting of a single staff with a treble clef and a key signature of one flat. The notation is written in a cursive, handwritten style.

Handwritten text in cursive script, likely a letter or document, written on the left page of an open book. The text is dense and fills most of the page.



Handwritten text in cursive script, continuing from the left page, written on the right page of an open book. The text is dense and fills most of the page.

Handwritten cursive text on the right page, consisting of approximately 12 lines of fluid, connected characters.

多色新美具字解

Handwritten cursive text on the left page, consisting of approximately 12 lines of fluid, connected characters.

多色新美具字解

Handwritten cursive text on the left page, continuing the fluid, connected characters from the previous section.

Handwritten cursive text on the left page, consisting of approximately 10 lines of script.

春宵若短のうら

Handwritten cursive text on the left page, continuing from the previous section.

Handwritten cursive text on the right page, starting with a decorative floral border at the top.

夏宵長夜を

Handwritten cursive text on the right page, continuing from the previous section.

あはれなることぞ
いかにわが心
を苦しめし
て新しき也

はれなきと不平明

えいとのらん
かほつらわらう

長歎待客を因服

あはれなることぞ

のまらぬことぞ
いかにわが心
を苦しめし
て新しき也

あはれなることぞ

あはれなることぞ
いかにわが心
を苦しめし
て新しき也

後宮は素らふ人

昔人の年とよの春に
くるとんは春とよの春に
まの春に

よの春に

よの春に

よの春に

よの春に

よの春に

よの春に

よの春に

よの春に

よの春に

よの春に

よの春に

よの春に

よの春に

よの春に

よの春に

Handwritten cursive text on the right page, consisting of approximately 10 lines of fluid, connected characters.

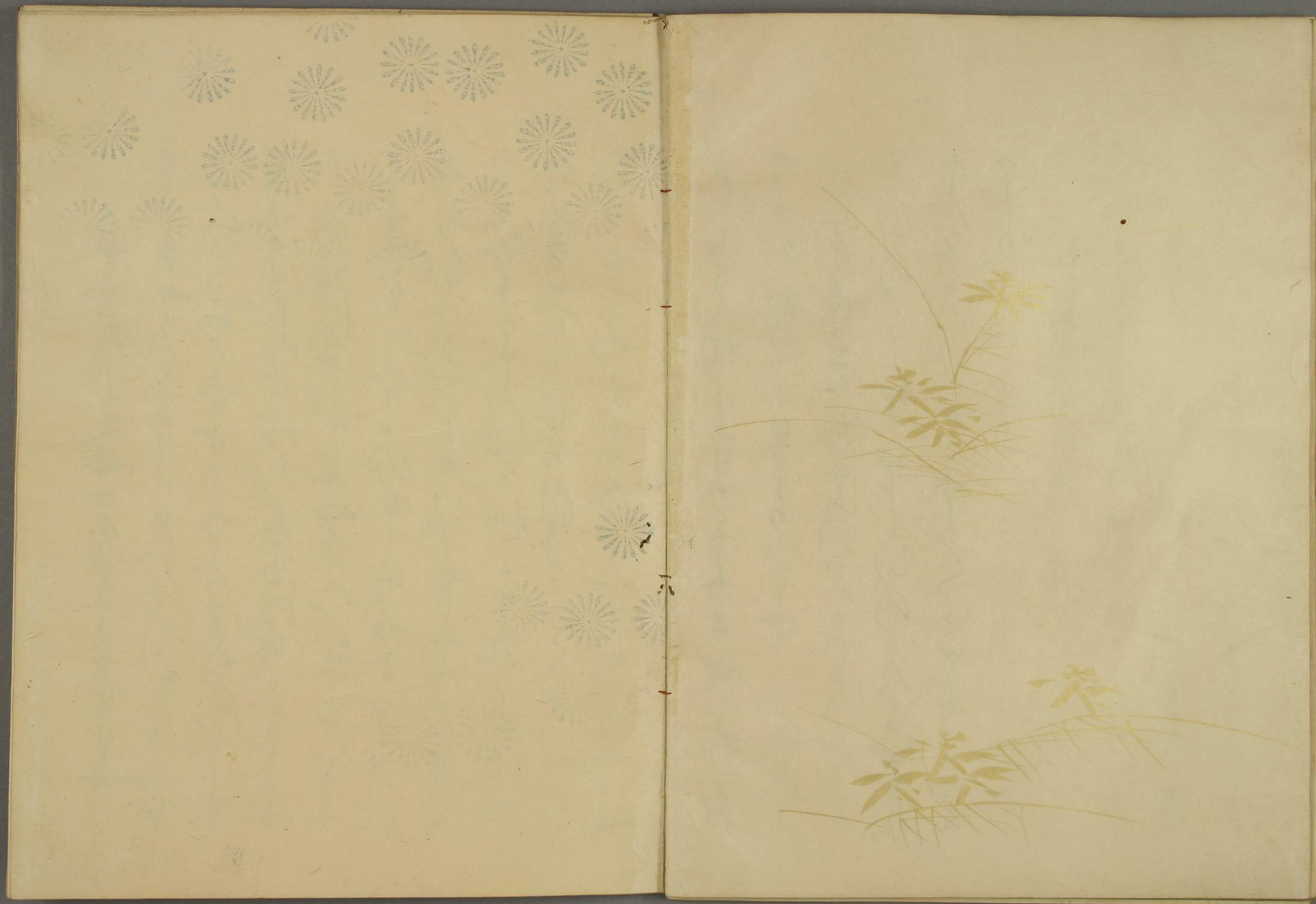
師東中允啓列士

Handwritten cursive text on the right page, continuing from the section header, consisting of approximately 10 lines of fluid, connected characters.

Handwritten cursive text on the left page, consisting of approximately 10 lines of fluid, connected characters.

丁惟克初上

Handwritten cursive text on the left page, continuing from the section header, consisting of approximately 10 lines of fluid, connected characters.

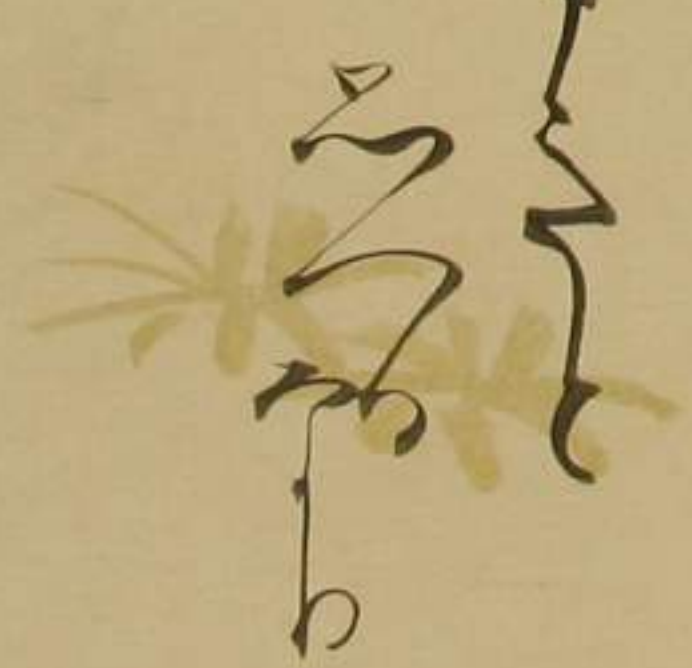


後平押寄遊法行

いそぐまふらふとくさあまのこ
いそぐまふらふとくさあまのこ
いそぐまふらふとくさあまのこ
いそぐまふらふとくさあまのこ
いそぐまふらふとくさあまのこ
いそぐまふらふとくさあまのこ
いそぐまふらふとくさあまのこ
いそぐまふらふとくさあまのこ
いそぐまふらふとくさあまのこ
いそぐまふらふとくさあまのこ

五日美之看不足

いそぐまふらふとくさあまのこ
いそぐまふらふとくさあまのこ
いそぐまふらふとくさあまのこ
いそぐまふらふとくさあまのこ
いそぐまふらふとくさあまのこ
いそぐまふらふとくさあまのこ
いそぐまふらふとくさあまのこ
いそぐまふらふとくさあまのこ
いそぐまふらふとくさあまのこ
いそぐまふらふとくさあまのこ



Handwritten musical notation on the right page, consisting of a single staff with a treble clef and a key signature of one flat. The notation is written in a cursive, handwritten style, featuring various note values, rests, and bar lines. The piece concludes with a double bar line and a final cadence.

學子被覺蒙羽交曲

Handwritten musical notation on the left page, consisting of a single staff with a treble clef and a key signature of one flat. The notation is written in a cursive, handwritten style, featuring various note values, rests, and bar lines. The piece concludes with a double bar line and a final cadence.

Handwritten text in cursive script, likely a letter or document, written on the left page of an open book. The text is dense and fills most of the page.

Handwritten text in cursive script, likely a letter or document, written on the right page of an open book. The text is dense and fills most of the page.

Handwritten text in cursive script, likely a letter or document, spanning the right page of the manuscript.

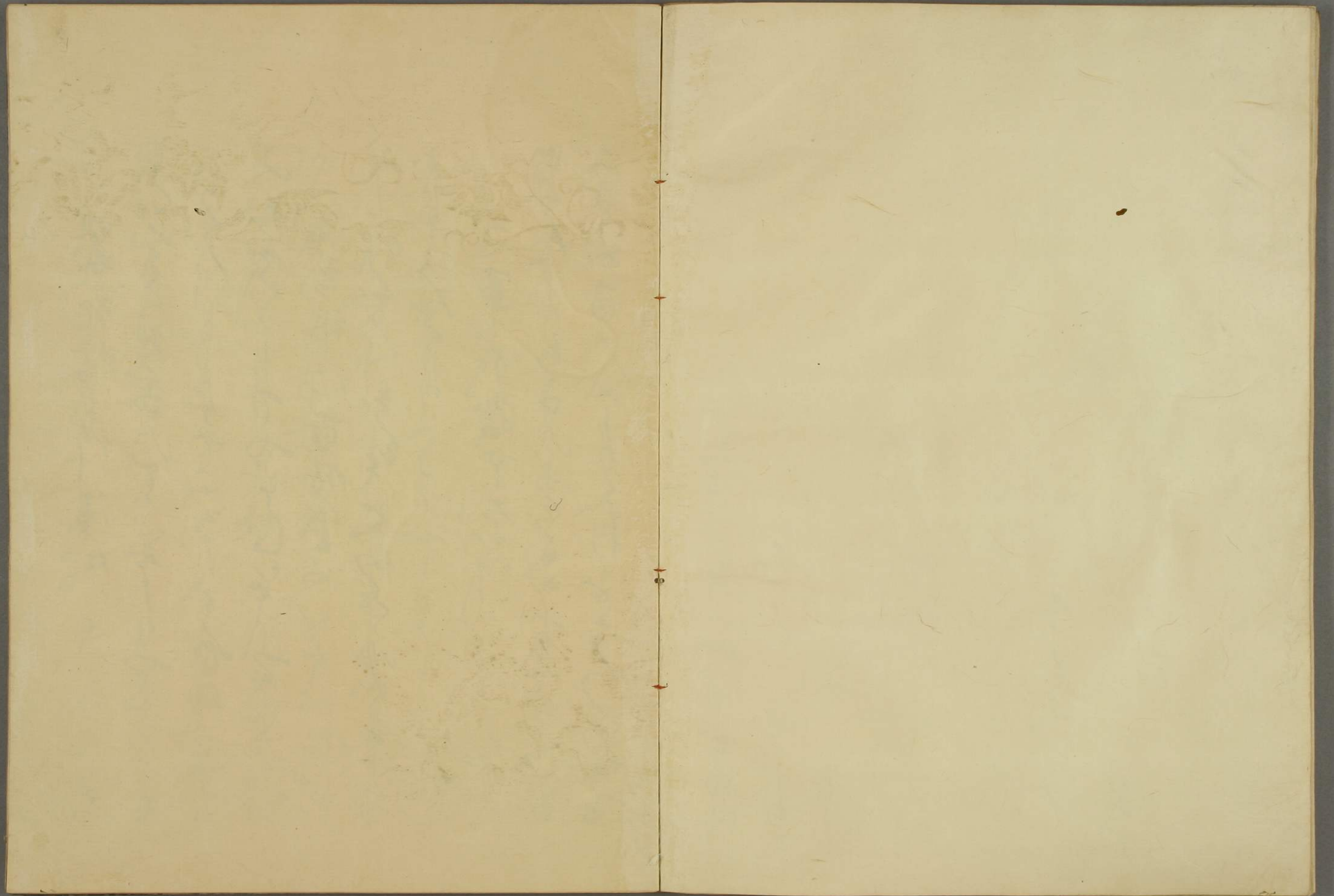
Handwritten text in cursive script, continuing from the right page or as a separate entry on the left page.

九重城 碧松庵 産生

Handwritten text in cursive script, continuing from the right page or as a separate entry on the left page.

Handwritten cursive script on the left page, consisting of several lines of text.

Handwritten cursive script on the right page, including a vertical line of text and a section with the Chinese characters '子集万格西百折'.



Handwritten text in a cursive script, likely a historical document or manuscript. The text is written in a fluid, connected style across approximately 12 lines. The ink is dark, and the paper shows signs of age and wear.

Handwritten text in a cursive script, likely a historical document or manuscript. The text is written in a fluid, connected style across approximately 12 lines. The ink is dark, and the paper shows signs of age and wear.

Handwritten text in cursive script, likely a list or account, spanning the right page of the manuscript. The text is written in a fluid, connected style with various flourishes and loops.

Handwritten text in cursive script, likely a list or account, spanning the left page of the manuscript. The text is written in a fluid, connected style with various flourishes and loops.

宛特嫩局馬系死

Handwritten text in a cursive script, consisting of approximately 12 lines of characters.

Handwritten text in a cursive script, consisting of approximately 12 lines of characters.

Handwritten cursive script on the right page, consisting of approximately 12 lines of text.

Handwritten cursive script on the left page, consisting of approximately 12 lines of text.

花細書地名人收

花のらん...
く...
...
...

夏翻金存玉捨以

Handwritten musical notation on the left page, consisting of a single staff with a treble clef and a key signature of one flat. The notation is written in a cursive, handwritten style.

Handwritten musical notation on the right page, consisting of a single staff with a treble clef and a key signature of one flat. The notation is written in a cursive, handwritten style.

卷之掩面教小澤

Handwritten musical notation on the right page, consisting of a single staff with a treble clef and a key signature of one flat. The notation is written in a cursive, handwritten style.

Handwritten text in a cursive script, likely a form of Arabic or Persian calligraphy, consisting of several lines of text.

回音魚波相和流

Handwritten text in a cursive script, likely a form of Arabic or Persian calligraphy, consisting of several lines of text.





