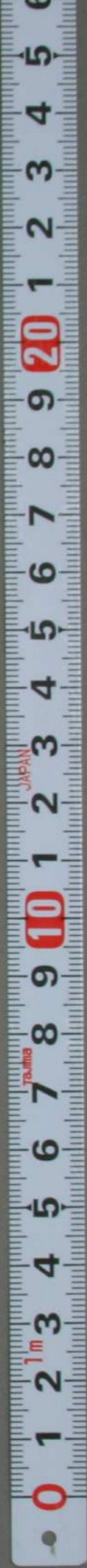
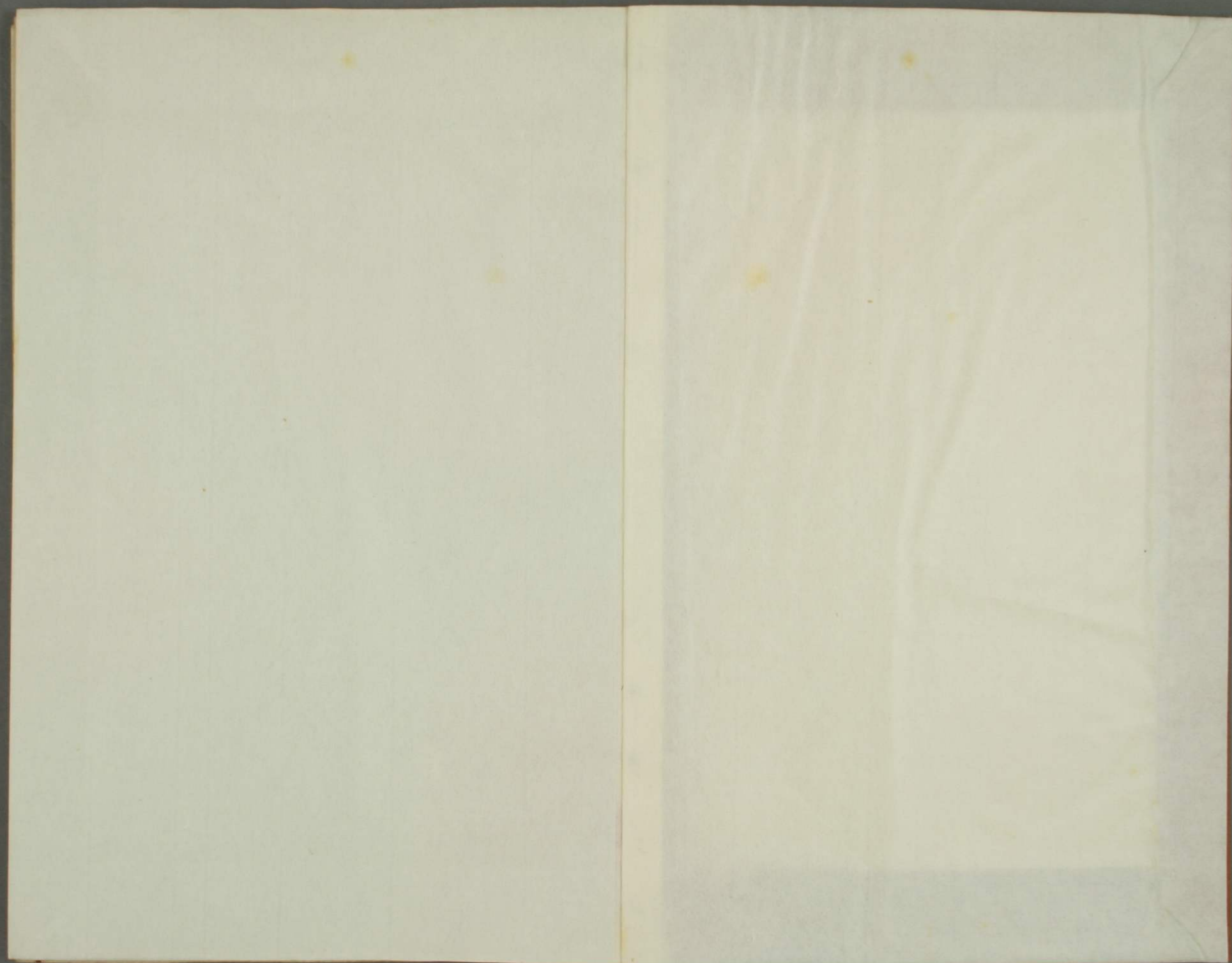




14
4408
2





Handwritten text in a cursive script, likely a musical score or a list of notes. The text is arranged in several columns, with some lines starting with a large initial letter. The script is dense and fluid, characteristic of a personal or working manuscript.

70

Handwritten text in a cursive script, continuing from the previous page. The text is arranged in several columns, with some lines starting with a large initial letter. The script is dense and fluid, characteristic of a personal or working manuscript.

Handwritten musical notation on the left page, consisting of approximately 12 staves of music. The notation includes various rhythmic markings and clefs, typical of early manuscript notation. The ink is dark and the paper shows signs of age and staining.

71

Handwritten musical notation on the right page, consisting of approximately 12 staves of music. The notation includes various rhythmic markings and clefs, typical of early manuscript notation. The ink is dark and the paper shows signs of age and staining.

Handwritten Japanese text in cursive style (sōsho), consisting of approximately 15 vertical columns of characters.

72

Handwritten Japanese text in cursive style (sōsho), consisting of approximately 15 vertical columns of characters.

Handwritten Japanese text in cursive style (sōsho), arranged in vertical columns from right to left. The text is dense and covers most of the page.

73

Handwritten Japanese text in cursive style (sōsho), arranged in vertical columns from right to left. The text is dense and covers most of the page.

Handwritten musical notation on page 74, consisting of several staves of notes and rests.

74

Handwritten musical notation on page 73, consisting of several staves of notes and rests.

Handwritten musical notation on the left page, consisting of several staves of notes and rests.

75

Handwritten musical notation on the right page, including a large initial character at the top left and several staves of notes.

Handwritten Japanese text in cursive style (sōsho), consisting of approximately 15 vertical columns of characters.

76

Handwritten Japanese text in cursive style (sōsho), consisting of approximately 15 vertical columns of characters.

Handwritten Japanese text in cursive style, covering the left page. The text is dense and appears to be a continuous passage or a list of items.

98

Handwritten Japanese text in cursive style, covering the right page. The text is dense and appears to be a continuous passage or a list of items.

Handwritten musical notation on page 78, consisting of several staves of notes and rests.

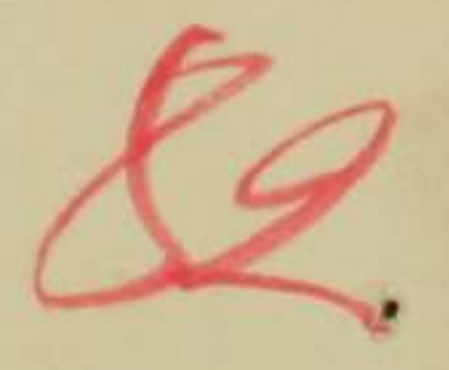
Handwritten musical notation on page 79, including a section labeled '(11)' and another section labeled '鉄又は極'.

Handwritten musical notation on page 78, consisting of multiple staves of notes and rests.

80

Handwritten musical notation on page 79, consisting of multiple staves of notes and rests.

Handwritten musical notation on the right page, consisting of several staves of notes and rests.



Handwritten musical notation on the left page, consisting of several staves of notes and rests.

4
 5
 6
 7
 8
 9
 10
 11
 12
 13
 14
 15
 16
 17
 18
 19
 20
 21
 22
 23
 24
 25
 26
 27
 28
 29
 30
 31
 32
 33
 34
 35
 36
 37
 38
 39
 40

89

1
 2
 3
 4
 5
 6
 7
 8
 9
 10
 11
 12
 13
 14
 15
 16
 17
 18
 19
 20
 21
 22
 23
 24
 25
 26
 27
 28
 29
 30
 31
 32
 33
 34
 35
 36
 37
 38
 39
 40

Handwritten musical notation on page 84, featuring various rhythmic patterns and notes.

84

Handwritten musical notation on page 85, featuring various rhythmic patterns and notes.

Handwritten musical notation on the left page, consisting of several staves of notes and rests.

88

Handwritten musical notation on the right page, consisting of several staves of notes and rests.

Handwritten musical notation on page 6-7, consisting of several staves of notes and rests.

Handwritten musical notation on page 86, consisting of several staves of notes and rests.

Handwritten Japanese text on page 6-8, consisting of several vertical columns of cursive script.

Handwritten Japanese text on page 87, consisting of several vertical columns of cursive script.

87

Handwritten Japanese text in cursive style (sōsho), consisting of approximately 15 vertical columns of characters.

58

Handwritten Japanese text in cursive style (sōsho), consisting of approximately 15 vertical columns of characters.

Handwritten musical notation on page 89, consisting of several staves of notes and rests.

89

Handwritten musical notation on page 88, consisting of several staves of notes and rests.

Handwritten musical notation on the left page, consisting of several staves of notes and rests.

9/6

Handwritten musical notation on the right page, continuing from the left page with multiple staves of notes.

9/6

Handwritten musical notation on the left page, consisting of several staves of notes and rests.

76

Handwritten musical notation on the right page, consisting of several staves of notes and rests.

Handwritten musical notation on page 93, consisting of several staves of notes and rests.

Handwritten musical notation on page 92, consisting of several staves of notes and rests.

Handwritten musical notation on the left page, consisting of several staves of notes and rests.

94

Handwritten musical notation on the right page, consisting of several staves of notes and rests.

Handwritten musical notation on the left page, consisting of several staves of notes and rests.

95

Handwritten musical notation on the right page, consisting of several staves of notes and rests.

Handwritten musical notation on the left page, consisting of several staves of notes and rests.

96

Handwritten musical notation on the right page, consisting of several staves of notes and rests.

Handwritten musical notation on page 66, consisting of several staves of notes and rests.

Handwritten musical notation on page 7-7, consisting of several staves of notes and rests.

Handwritten musical notation on page 98, consisting of several staves of notes and rests.

98

Handwritten musical notation on page 77, consisting of several staves of notes and rests.

Handwritten musical notation on page 79, consisting of several staves of notes and rests.

99

Handwritten musical notation on page 98, consisting of several staves of notes and rests.

$$\begin{array}{r}
 B=A \\
 A=5 \\
 (B+x)-(A-x)=15 \\
 B+x-A+x=15 \\
 B-A+2x=15 \\
 2x=15-B+A \\
 2x=A-B+15 \\
 x=\frac{A-B+15}{2}
 \end{array}$$

1. 大分...
 2. ...
 3. ...
 4. ...
 5. ...
 6. ...
 7. ...
 8. ...
 9. ...
 10. ...
 11. ...
 12. ...
 13. ...
 14. ...
 15. ...
 16. ...
 17. ...
 18. ...
 19. ...
 20. ...

100

7-10

1. ...
 2. ...
 3. ...
 4. ...
 5. ...
 6. ...
 7. ...
 8. ...
 9. ...
 10. ...
 11. ...
 12. ...
 13. ...
 14. ...
 15. ...
 16. ...
 17. ...
 18. ...
 19. ...
 20. ...

1. ...
 2. ...
 3. ...
 4. ...
 5. ...
 6. ...
 7. ...
 8. ...
 9. ...
 10. ...
 11. ...
 12. ...
 13. ...
 14. ...
 15. ...
 16. ...
 17. ...
 18. ...
 19. ...
 20. ...

1. ...
 2. ...
 3. ...
 4. ...
 5. ...
 6. ...
 7. ...
 8. ...
 9. ...
 10. ...
 11. ...
 12. ...
 13. ...
 14. ...
 15. ...
 16. ...
 17. ...
 18. ...
 19. ...
 20. ...

101
 102

Handwritten musical notation on page 109, featuring various notes, rests, and red annotations.

Handwritten musical notation on page 110, featuring various notes, rests, and red annotations.

Handwritten musical notation on page 103, featuring wavy lines and various red annotations.

103

Handwritten musical notation on page 102, featuring wavy lines and various red annotations.

Handwritten Japanese text in cursive style, including characters like 夢, 心, 魂, and 身, with red annotations.

Handwritten Japanese text in cursive style, including characters like 夢, 心, 魂, and 身, with red annotations.

Handwritten Japanese text in cursive style (sōsho) with red ink annotations. The text is arranged in approximately 12 vertical columns, reading from right to left. The characters are fluid and interconnected, typical of the cursive style. Red ink is used for corrections, emphasis, or specific annotations throughout the piece.

Handwritten Japanese text in cursive style (sōsho) with red ink annotations. The text is arranged in approximately 12 vertical columns, reading from right to left. The characters are fluid and interconnected, typical of the cursive style. Red ink is used for corrections, emphasis, or specific annotations throughout the piece.

The first thing I noticed
 when I stepped out of the plane
 was the fresh air. It was so
 different from the stale air
 of the city. The sun was
 shining brightly, and the
 birds were singing. I
 felt like I had entered a
 new world. The landscape
 was beautiful, and the
 people were friendly. I
 was in luck. It was a
 great first experience.

101

The first thing I noticed
 when I stepped out of the plane
 was the fresh air. It was so
 different from the stale air
 of the city. The sun was
 shining brightly, and the
 birds were singing. I
 felt like I had entered a
 new world. The landscape
 was beautiful, and the
 people were friendly. I
 was in luck. It was a
 great first experience.

Handwritten musical notation on page 108, featuring a staff with notes and various red annotations. The notation includes a treble clef, a key signature of one flat, and a 4/4 time signature. The notes are primarily eighth and sixteenth notes, with some rests. Red ink is used for accents, slurs, and other markings throughout the piece.

108

Handwritten musical notation on page 107, featuring a staff with notes and various red annotations. The notation includes a treble clef, a key signature of one flat, and a 4/4 time signature. The notes are primarily eighth and sixteenth notes, with some rests. Red ink is used for accents, slurs, and other markings throughout the piece.

Handwritten Japanese text in cursive style, featuring many red annotations and corrections. The text is dense and occupies most of the page.



Handwritten Japanese text in cursive style, featuring many red annotations and corrections. The text is dense and occupies most of the page.

Handwritten Japanese text in cursive style (sōsho) on page 112. The text is written in black ink with several red annotations (kuzushiji) interspersed throughout. The characters are dense and flow across the page.

Handwritten Japanese text in cursive style (sōsho) on page 111. The text is written in black ink with several red annotations (kuzushiji) interspersed throughout. A circled stamp or mark is visible on the left side of the page.

検約

Handwritten musical notation on page 8-4, featuring a staff with notes and rests. The notation is written in black ink, with several annotations in red ink. The notes are mostly eighth and sixteenth notes, with some beamed together. There are also some larger notes and rests. The red ink annotations appear to be corrections or markings, possibly indicating fingerings or breath marks. The page is numbered '8-4' at the top.

113

Handwritten musical notation on page 113, featuring a staff with notes and rests. The notation is written in black ink, with several annotations in red ink. The notes are mostly eighth and sixteenth notes, with some beamed together. There are also some larger notes and rests. The red ink annotations appear to be corrections or markings, possibly indicating fingerings or breath marks. The page is numbered '113' at the bottom.

Handwritten musical notation on page 8-5, featuring black ink notes and red ink annotations.

114

Handwritten musical notation on page 114, featuring black ink notes and red ink annotations.

Handwritten musical notation on page 116, featuring a series of rhythmic patterns and notes. The notation is written in black ink with several red annotations and markings throughout the piece.

115

Handwritten musical notation on page 115, featuring a series of rhythmic patterns and notes. The notation is written in black ink with several red annotations and markings throughout the piece.

Handwritten musical notation on page 115, featuring a series of wavy lines with various red and green annotations. The notation is written in a cursive style, typical of early manuscript notation. The page is numbered 115 at the bottom.

Handwritten musical notation on page 116, featuring a series of wavy lines with various red annotations. The notation is written in a cursive style, typical of early manuscript notation. The page is numbered 116 at the top.

Handwritten musical notation on page 8-7, featuring multiple staves of notes with red annotations and a prominent red '117' marking in the lower right quadrant.

Handwritten musical notation on page 116, consisting of several staves of notes with red annotations.

117

Handwritten musical notation on page 8, featuring wavy lines, vertical stems, and various notes. Red and blue ink annotations are interspersed throughout the score.

619

Handwritten musical notation on page 9, continuing the style of page 8 with wavy lines and notes. Red and blue ink annotations are present.

Handwritten musical notation in G-clef on a five-line staff. The music features a wavy, eighth-note melody with various rests. Several notes and rests are annotated with handwritten Japanese characters in red and blue ink, including 'あ', 'い', 'う', 'え', 'お', and 'ひ'. The notation appears to be a form of shorthand or a specific dialectal notation for a melody.

Handwritten musical notation in G-clef on a five-line staff, similar to the notation on page 119. It consists of a wavy, eighth-note melody with numerous red and blue ink annotations, likely indicating pitch bends or specific articulations. The characters used are similar to those on the adjacent page, such as 'あ', 'い', 'う', and 'え'. The notation is dense and fills most of the staff space.

Handwritten musical notation on page 121, featuring a complex staff with various notes, rests, and dynamic markings. The notation is written in black ink with red and blue annotations. The staff is divided into measures by vertical bar lines. The notes are mostly eighth and sixteenth notes, with some beamed together. There are several rests of varying lengths. The red and blue markings appear to be performance instructions or corrections. The overall style is that of a handwritten musical score.

121

Handwritten musical notation on page 120, featuring a complex staff with various notes, rests, and dynamic markings. The notation is written in black ink with red and blue annotations. The staff is divided into measures by vertical bar lines. The notes are mostly eighth and sixteenth notes, with some beamed together. There are several rests of varying lengths. The red and blue markings appear to be performance instructions or corrections. The overall style is that of a handwritten musical score.

Handwritten Japanese text on the left page, written vertically. The text is in cursive and includes several red annotations. At the top right, there is a red vertical note: **たのしみ**. At the bottom right, there is a red vertical note: **122**.

Handwritten Japanese text on the right page, written vertically. The text is in cursive and includes several red annotations.

の あ い う え お
 か き く け こ
 さ し す せ そ
 た て ち ち た
 な に ぬ ね の
 は ひ ふ へ ほ
 ま み む め む
 や ゆ ゑ へ け
 ぞ ぢ ぢ ぢ ぢ
 づ づ づ づ づ
 の あ い う え お
 か き く け こ
 さ し す せ そ
 た て ち ち た
 な に ぬ ね の
 は ひ ふ へ ほ
 ま み む め む
 や ゆ ゑ へ け
 ぞ ぢ ぢ ぢ ぢ
 づ づ づ づ づ

123

の あ い う え お
 か き く け こ
 さ し す せ そ
 た て ち ち た
 な に ぬ ね の
 は ひ ふ へ ほ
 ま み む め む
 や ゆ ゑ へ け
 ぞ ぢ ぢ ぢ ぢ
 づ づ づ づ づ
 の あ い う え お
 か き く け こ
 さ し す せ そ
 た て ち ち た
 な に ぬ ね の
 は ひ ふ へ ほ
 ま み む め む
 や ゆ ゑ へ け
 ぞ ぢ ぢ ぢ ぢ
 づ づ づ づ づ

Handwritten musical notation on page 8-14. The notation consists of a series of wavy lines on a staff, with various red and blue markings above and below. Some markings appear to be notes or rests, while others are decorative flourishes. The text is written vertically, with the right side of the page being the top.

124

Handwritten musical notation on page 124. The notation consists of a series of wavy lines on a staff, with various red and blue markings above and below. Some markings appear to be notes or rests, while others are decorative flourishes. The text is written vertically, with the left side of the page being the top.

Handwritten musical notation on the left page, featuring a single staff with a treble clef. The notation consists of a series of wavy lines representing notes and rests. Red and blue ink annotations are scattered throughout, including small characters and symbols. The page is numbered '125' in red ink at the bottom right.

125

Handwritten musical notation on the right page, featuring a single staff with a treble clef. The notation consists of a series of wavy lines representing notes and rests. Red and blue ink annotations are scattered throughout, including small characters and symbols. The page is numbered '126' in black ink at the bottom left.

Handwritten musical notation on page 126, featuring wavy lines and various red and blue annotations.

126

Handwritten musical notation on page 125, featuring wavy lines and various red and blue annotations.

Handwritten Japanese text in cursive style (sōsho) on page 127. The text is written in black ink with several words and phrases highlighted in red ink. The characters are fluid and connected, typical of the cursive style. The page number '127' is written in large red characters at the bottom right.

127

Handwritten Japanese text in cursive style (sōsho) on page 128. The text is written in black ink with several words and phrases highlighted in red ink. The characters are fluid and connected, typical of the cursive style. The page number '128' is written in black ink at the bottom left.

Handwritten musical notation on page 128, featuring wavy lines and various red and blue annotations.

129

Handwritten musical notation on page 129, featuring wavy lines and various red and blue annotations.

Handwritten musical notation on the left page, featuring wavy lines and various annotations in red and blue ink. The notation is organized into several vertical columns. A large red number '130' is written at the bottom center of the page.

130

Handwritten musical notation on the right page, continuing from the left page. It features wavy lines and various annotations in red and blue ink, organized into several vertical columns. A large red number '131' is written at the bottom center of the page.

131

