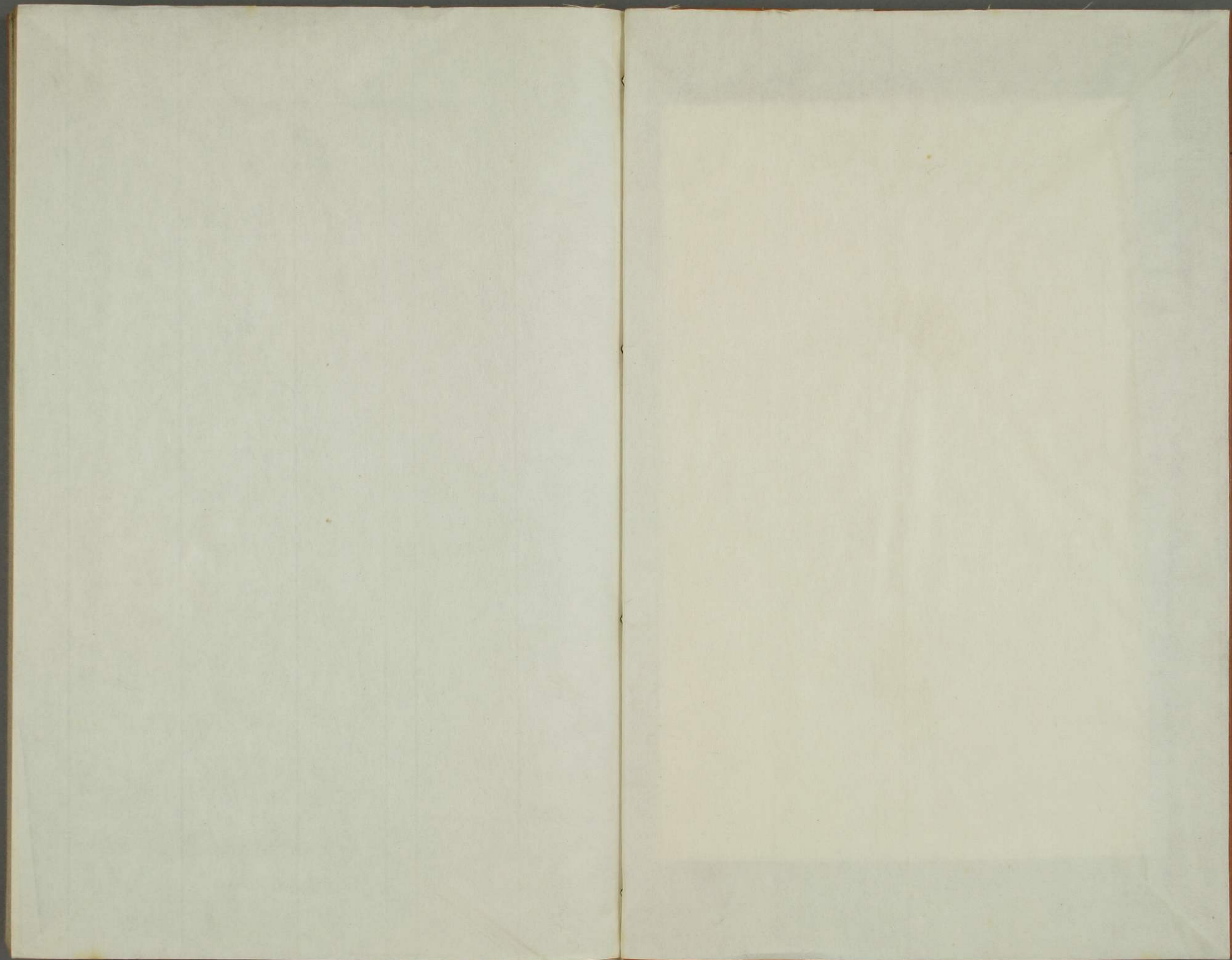




~14
4407
3





特
14
4407
3

Handwritten musical notation in Kuzushiji style, consisting of several staves of notes and rests.



Handwritten musical notation on the right page, consisting of approximately 12 staves of music. The notation is dense and appears to be a form of shorthand or a specific musical dialect, possibly related to early manuscript notation or a specific regional style. It features various rhythmic values, stems, and beams, though the specific notes are not clearly identifiable as standard modern notation.

Handwritten musical notation on the left page, consisting of approximately 12 staves of music. Similar to the right page, it features dense, shorthand-like notation with stems, beams, and various rhythmic markings. The notation is consistent with the style seen on the opposite page, suggesting a continuous piece of music or a related study.

Handwritten musical notation on the right page, consisting of approximately 12 staves of music. The notation is dense and appears to be a form of shorthand or a specific musical dialect. The page is numbered '2' at the top center.

Handwritten musical notation on the left page, consisting of approximately 12 staves of music. The notation is dense and appears to be a form of shorthand or a specific musical dialect, matching the style on the right page.

Handwritten musical notation on the right side of the page, consisting of several staves of notes and rests.

Handwritten musical notation on the right side of the page, consisting of several staves of notes and rests.

Handwritten musical notation on the right side of the page, consisting of several staves of notes and rests.

Handwritten musical notation on the right side of the page, consisting of several staves of notes and rests.

Handwritten musical notation on the right side of the page, consisting of several staves of notes and rests.

Handwritten musical notation on the left side of the page, consisting of several staves of notes and rests.

Handwritten musical notation on the right page, featuring a series of rhythmic lines with various note values and rests, typical of a musical score.

Handwritten musical notation on the left page, continuing the musical score from the right page, with similar rhythmic patterns and note values.

Handwritten text in a cursive script, likely a form of shorthand or a specific dialect. The text is arranged in several vertical columns, with some characters appearing to be stylized or abbreviated. The script is dense and fills most of the page.

Handwritten text in a cursive script, similar to the left page. The text is arranged in several vertical columns, with some characters appearing to be stylized or abbreviated. The script is dense and fills most of the page.

Handwritten musical notation on the left page, consisting of several staves of notes and rests.

Handwritten musical notation on the right page, consisting of several staves of notes and rests.

Handwritten musical notation on the right page, consisting of approximately 12 staves of music. The notation includes various rhythmic values, stems, and beams, typical of a handwritten musical score.

Handwritten musical notation on the left page, consisting of approximately 12 staves of music. The notation includes various rhythmic values, stems, and beams, typical of a handwritten musical score.

Handwritten musical notation on the left page, consisting of several staves of notes and rests, written in a cursive style.

Handwritten musical notation on the right page, continuing from the left page. It includes staves of notes and rests, with some text written below the staves.

Handwritten text in Arabic script, consisting of approximately 12 lines of dense, cursive writing. The ink is dark and the paper shows signs of age and wear.

Handwritten text in Arabic script, consisting of approximately 12 lines of dense, cursive writing. The ink is dark and the paper shows signs of age and wear.

Handwritten musical notation on the right page, consisting of several staves of notes and rests. The notation is dense and appears to be a single melodic line.

Handwritten musical notation on the left page, consisting of several staves of notes and rests. The notation is dense and appears to be a single melodic line.

Handwritten musical notation on the left page, consisting of several staves of notes and rests.

Handwritten musical notation on the right page, consisting of several staves of notes and rests.

۱
 ۲
 ۳
 ۴
 ۵
 ۶
 ۷
 ۸
 ۹
 ۱۰
 ۱۱
 ۱۲
 ۱۳
 ۱۴
 ۱۵
 ۱۶
 ۱۷
 ۱۸
 ۱۹
 ۲۰
 ۲۱
 ۲۲
 ۲۳
 ۲۴
 ۲۵
 ۲۶
 ۲۷
 ۲۸
 ۲۹
 ۳۰
 ۳۱
 ۳۲
 ۳۳
 ۳۴
 ۳۵
 ۳۶
 ۳۷
 ۳۸
 ۳۹
 ۴۰
 ۴۱
 ۴۲
 ۴۳
 ۴۴
 ۴۵
 ۴۶
 ۴۷
 ۴۸
 ۴۹
 ۵۰
 ۵۱
 ۵۲
 ۵۳
 ۵۴
 ۵۵
 ۵۶
 ۵۷
 ۵۸
 ۵۹
 ۶۰
 ۶۱
 ۶۲
 ۶۳
 ۶۴
 ۶۵
 ۶۶
 ۶۷
 ۶۸
 ۶۹
 ۷۰
 ۷۱
 ۷۲
 ۷۳
 ۷۴
 ۷۵
 ۷۶
 ۷۷
 ۷۸
 ۷۹
 ۸۰
 ۸۱
 ۸۲
 ۸۳
 ۸۴
 ۸۵
 ۸۶
 ۸۷
 ۸۸
 ۸۹
 ۹۰
 ۹۱
 ۹۲
 ۹۳
 ۹۴
 ۹۵
 ۹۶
 ۹۷
 ۹۸
 ۹۹
 ۱۰۰

۱
 ۲
 ۳
 ۴
 ۵
 ۶
 ۷
 ۸
 ۹
 ۱۰
 ۱۱
 ۱۲
 ۱۳
 ۱۴
 ۱۵
 ۱۶
 ۱۷
 ۱۸
 ۱۹
 ۲۰
 ۲۱
 ۲۲
 ۲۳
 ۲۴
 ۲۵
 ۲۶
 ۲۷
 ۲۸
 ۲۹
 ۳۰
 ۳۱
 ۳۲
 ۳۳
 ۳۴
 ۳۵
 ۳۶
 ۳۷
 ۳۸
 ۳۹
 ۴۰
 ۴۱
 ۴۲
 ۴۳
 ۴۴
 ۴۵
 ۴۶
 ۴۷
 ۴۸
 ۴۹
 ۵۰
 ۵۱
 ۵۲
 ۵۳
 ۵۴
 ۵۵
 ۵۶
 ۵۷
 ۵۸
 ۵۹
 ۶۰
 ۶۱
 ۶۲
 ۶۳
 ۶۴
 ۶۵
 ۶۶
 ۶۷
 ۶۸
 ۶۹
 ۷۰
 ۷۱
 ۷۲
 ۷۳
 ۷۴
 ۷۵
 ۷۶
 ۷۷
 ۷۸
 ۷۹
 ۸۰
 ۸۱
 ۸۲
 ۸۳
 ۸۴
 ۸۵
 ۸۶
 ۸۷
 ۸۸
 ۸۹
 ۹۰
 ۹۱
 ۹۲
 ۹۳
 ۹۴
 ۹۵
 ۹۶
 ۹۷
 ۹۸
 ۹۹
 ۱۰۰

Handwritten musical notation on the left page, consisting of several staves of notes and rests. The notation is dense and appears to be a single melodic line.

Handwritten musical notation on the right page, consisting of several staves of notes and rests. The notation is dense and appears to be a single melodic line.

Handwritten musical notation on the left page, consisting of several staves of notes and rests.

Handwritten musical notation on the right page, continuing from the left page, with a large number '3' written at the top left of the page.

Handwritten musical notation on the left page, consisting of several staves of notes and rests.

Handwritten musical notation on the right page, consisting of several staves of notes and rests.

Handwritten musical notation on the left page, consisting of several staves of notes and rests.

Handwritten musical notation on the right page, including a section header at the top and multiple staves of notes.

Handwritten text in a cursive script, likely a form of Japanese calligraphy (sōsho). The text is arranged in approximately 12 vertical columns, reading from right to left. The characters are fluid and interconnected, with some larger characters and smaller ones interspersed. There are some faint markings and a small number '4' at the top right of the page.

Handwritten text in a cursive script, likely a form of Japanese calligraphy (sōsho). The text is arranged in approximately 12 vertical columns, reading from right to left. The characters are fluid and interconnected, with some larger characters and smaller ones interspersed. There are some faint markings and a small number '4' at the top right of the page.

1. 2. 3. 4. 5. 6. 7. 8. 9. 10. 11. 12. 13. 14. 15. 16. 17. 18. 19. 20. 21. 22. 23. 24. 25. 26. 27. 28. 29. 30. 31. 32. 33. 34. 35. 36. 37. 38. 39. 40. 41. 42. 43. 44. 45. 46. 47. 48. 49. 50. 51. 52. 53. 54. 55. 56. 57. 58. 59. 60. 61. 62. 63. 64. 65. 66. 67. 68. 69. 70. 71. 72. 73. 74. 75. 76. 77. 78. 79. 80. 81. 82. 83. 84. 85. 86. 87. 88. 89. 90. 91. 92. 93. 94. 95. 96. 97. 98. 99. 100.

1. 2. 3. 4. 5. 6. 7. 8. 9. 10. 11. 12. 13. 14. 15. 16. 17. 18. 19. 20. 21. 22. 23. 24. 25. 26. 27. 28. 29. 30. 31. 32. 33. 34. 35. 36. 37. 38. 39. 40. 41. 42. 43. 44. 45. 46. 47. 48. 49. 50. 51. 52. 53. 54. 55. 56. 57. 58. 59. 60. 61. 62. 63. 64. 65. 66. 67. 68. 69. 70. 71. 72. 73. 74. 75. 76. 77. 78. 79. 80. 81. 82. 83. 84. 85. 86. 87. 88. 89. 90. 91. 92. 93. 94. 95. 96. 97. 98. 99. 100.

Handwritten musical notation on the left page, consisting of several staves of notes and rests.

Handwritten musical notation on the right page, continuing from the left page, with a large water stain at the bottom.

Handwritten musical notation on the right page, consisting of approximately 12 staves of music. The notation is dense and appears to be a form of shorthand or a specific musical dialect. It includes various rhythmic values, stems, and beams, all written in a cursive, flowing style. The paper shows signs of age and staining, particularly in the lower half of the page.

Handwritten musical notation on the left page, consisting of approximately 12 staves of music. The notation is dense and appears to be a form of shorthand or a specific musical dialect. It includes various rhythmic values, stems, and beams, all written in a cursive, flowing style. The paper shows signs of age and staining, particularly in the lower half of the page.

Handwritten musical notation on the right page, consisting of several staves of notes and rests, written in a cursive style.

Handwritten musical notation on the left page, consisting of several staves of notes and rests, written in a cursive style.

Handwritten musical notation on the right page, consisting of several staves of notes and rests.

Handwritten musical notation on the left page, consisting of several staves of notes and rests.

Handwritten musical notation on the right page, featuring a series of rhythmic patterns and notes. The notation includes various note values and rests, with some markings that appear to be lyrics or performance instructions. The page is numbered '10' at the top right.

Handwritten musical notation on the left page, continuing the piece from the right page. It features similar rhythmic patterns and notes, with some markings that appear to be lyrics or performance instructions. The page is numbered '11' at the top right.

Handwritten musical notation on the left page, featuring a single staff with a treble clef and a key signature of one flat. The notation includes various rhythmic values, accidentals, and dynamic markings. The handwriting is in a cursive style, typical of 18th or 19th-century manuscript notation.

Handwritten musical notation on the right page, featuring a single staff with a treble clef and a key signature of one flat. The notation includes various rhythmic values, accidentals, and dynamic markings. The handwriting is in a cursive style, typical of 18th or 19th-century manuscript notation.

Handwritten musical notation on the right page, featuring a series of rhythmic lines with various note values and rests. The notation is dense and fills most of the page.

Handwritten musical notation on the left page, continuing the piece from the right page. It includes a variety of note values and rests, with some larger notes and smaller ones interspersed.

Handwritten musical notation on the left page, featuring a complex arrangement of notes, rests, and clefs. The notation is dense and appears to be a single melodic line. The page is numbered '1' in the top right corner.

Handwritten musical notation on the right page, continuing the piece from the left page. It features similar notation with notes, rests, and clefs. The page is numbered '2' in the top right corner.

Handwritten text in a cursive script, likely a musical score or a form of shorthand. The text is arranged in several columns, with some lines starting with a large, decorative initial letter. The script is dense and fluid, with many loops and flourishes.

Handwritten text in a cursive script, similar to the right page. It consists of multiple columns of text, with some lines beginning with prominent initial letters. The handwriting is consistent with the right page, suggesting a continuous piece of work or a related document.

Handwritten text in a cursive script, likely a musical score or a list of notes, spanning the right page of the manuscript. The text is written in a fluid, connected style with various flourishes and accents.

Handwritten text in a cursive script, likely a musical score or a list of notes, spanning the left page of the manuscript. The text is written in a fluid, connected style with various flourishes and accents.

Handwritten Japanese text in cursive style (sōsho) on the left page. The text is arranged in several vertical columns, starting from the right side of the page and moving left. The characters are fluid and connected, typical of the cursive script. The page number '1' is visible at the top right corner of the page.

Handwritten Japanese text in cursive style (sōsho) on the right page. The text is arranged in several vertical columns, starting from the right side of the page and moving left. The characters are fluid and connected, typical of the cursive script. The page number '1' is visible at the top right corner of the page.

甲子 乙丑 丙寅 丁卯 戊辰 己巳 庚午 辛未 壬申 癸酉
 甲戌 乙亥 丙子 丁丑 戊寅 己卯 庚辰 辛巳 壬午 癸未
 甲申 乙酉 丙戌 丁亥 戊子 己丑 庚寅 辛卯 壬辰 癸巳
 甲午 乙未 丙申 丁酉 戊戌 己亥 庚子 辛丑 壬寅 癸卯
 甲辰 乙巳 丙午 丁未 戊申 己酉 庚戌 辛亥 壬子 癸丑
 甲寅 乙卯 丙辰 丁巳 戊午 己未 庚申 辛酉 壬戌 癸亥
 甲子 乙丑 丙寅 丁卯 戊辰 己巳 庚午 辛未 壬申 癸酉
 甲戌 乙亥 丙子 丁丑 戊寅 己卯 庚辰 辛巳 壬午 癸未
 甲申 乙酉 丙戌 丁亥 戊子 己丑 庚寅 辛卯 壬辰 癸巳
 甲午 乙未 丙申 丁酉 戊戌 己亥 庚子 辛丑 壬寅 癸卯
 甲辰 乙巳 丙午 丁未 戊申 己酉 庚戌 辛亥 壬子 癸丑
 甲寅 乙卯 丙辰 丁巳 戊午 己未 庚申 辛酉 壬戌 癸亥

甲子 乙丑 丙寅 丁卯 戊辰 己巳 庚午 辛未 壬申 癸酉
 甲戌 乙亥 丙子 丁丑 戊寅 己卯 庚辰 辛巳 壬午 癸未
 甲申 乙酉 丙戌 丁亥 戊子 己丑 庚寅 辛卯 壬辰 癸巳
 甲午 乙未 丙申 丁酉 戊戌 己亥 庚子 辛丑 壬寅 癸卯
 甲辰 乙巳 丙午 丁未 戊申 己酉 庚戌 辛亥 壬子 癸丑
 甲寅 乙卯 丙辰 丁巳 戊午 己未 庚申 辛酉 壬戌 癸亥
 甲子 乙丑 丙寅 丁卯 戊辰 己巳 庚午 辛未 壬申 癸酉
 甲戌 乙亥 丙子 丁丑 戊寅 己卯 庚辰 辛巳 壬午 癸未
 甲申 乙酉 丙戌 丁亥 戊子 己丑 庚寅 辛卯 壬辰 癸巳
 甲午 乙未 丙申 丁酉 戊戌 己亥 庚子 辛丑 壬寅 癸卯
 甲辰 乙巳 丙午 丁未 戊申 己酉 庚戌 辛亥 壬子 癸丑
 甲寅 乙卯 丙辰 丁巳 戊午 己未 庚申 辛酉 壬戌 癸亥

1. 〇
 2. 〇
 3. 〇
 4. 〇
 5. 〇
 6. 〇
 7. 〇
 8. 〇
 9. 〇
 10. 〇
 11. 〇
 12. 〇
 13. 〇
 14. 〇
 15. 〇
 16. 〇
 17. 〇
 18. 〇
 19. 〇
 20. 〇
 21. 〇
 22. 〇
 23. 〇
 24. 〇
 25. 〇
 26. 〇
 27. 〇
 28. 〇
 29. 〇
 30. 〇
 31. 〇
 32. 〇
 33. 〇
 34. 〇
 35. 〇
 36. 〇
 37. 〇
 38. 〇
 39. 〇
 40. 〇
 41. 〇
 42. 〇
 43. 〇
 44. 〇
 45. 〇
 46. 〇
 47. 〇
 48. 〇
 49. 〇
 50. 〇
 51. 〇
 52. 〇
 53. 〇
 54. 〇
 55. 〇
 56. 〇
 57. 〇
 58. 〇
 59. 〇
 60. 〇
 61. 〇
 62. 〇
 63. 〇
 64. 〇
 65. 〇
 66. 〇
 67. 〇
 68. 〇
 69. 〇
 70. 〇
 71. 〇
 72. 〇
 73. 〇
 74. 〇
 75. 〇
 76. 〇
 77. 〇
 78. 〇
 79. 〇
 80. 〇
 81. 〇
 82. 〇
 83. 〇
 84. 〇
 85. 〇
 86. 〇
 87. 〇
 88. 〇
 89. 〇
 90. 〇
 91. 〇
 92. 〇
 93. 〇
 94. 〇
 95. 〇
 96. 〇
 97. 〇
 98. 〇
 99. 〇
 100. 〇

1. 〇
 2. 〇
 3. 〇
 4. 〇
 5. 〇
 6. 〇
 7. 〇
 8. 〇
 9. 〇
 10. 〇
 11. 〇
 12. 〇
 13. 〇
 14. 〇
 15. 〇
 16. 〇
 17. 〇
 18. 〇
 19. 〇
 20. 〇
 21. 〇
 22. 〇
 23. 〇
 24. 〇
 25. 〇
 26. 〇
 27. 〇
 28. 〇
 29. 〇
 30. 〇
 31. 〇
 32. 〇
 33. 〇
 34. 〇
 35. 〇
 36. 〇
 37. 〇
 38. 〇
 39. 〇
 40. 〇
 41. 〇
 42. 〇
 43. 〇
 44. 〇
 45. 〇
 46. 〇
 47. 〇
 48. 〇
 49. 〇
 50. 〇
 51. 〇
 52. 〇
 53. 〇
 54. 〇
 55. 〇
 56. 〇
 57. 〇
 58. 〇
 59. 〇
 60. 〇
 61. 〇
 62. 〇
 63. 〇
 64. 〇
 65. 〇
 66. 〇
 67. 〇
 68. 〇
 69. 〇
 70. 〇
 71. 〇
 72. 〇
 73. 〇
 74. 〇
 75. 〇
 76. 〇
 77. 〇
 78. 〇
 79. 〇
 80. 〇
 81. 〇
 82. 〇
 83. 〇
 84. 〇
 85. 〇
 86. 〇
 87. 〇
 88. 〇
 89. 〇
 90. 〇
 91. 〇
 92. 〇
 93. 〇
 94. 〇
 95. 〇
 96. 〇
 97. 〇
 98. 〇
 99. 〇
 100. 〇

Handwritten musical notation on the left page, consisting of multiple staves of notes and rests.

Handwritten musical notation on the right page, consisting of multiple staves of notes and rests.

Handwritten musical notation on the left page, featuring a complex arrangement of notes, rests, and clefs. The notation is dense and appears to be a single melodic line. There are several measures with notes beamed together, and some measures with longer note values. The handwriting is fluid and characteristic of 18th or 19th-century manuscript notation.

Handwritten musical notation on the right page, continuing the piece from the left page. It includes a section with a double bar line and a key signature change, indicated by a sharp sign. The notation continues with various note values and rests, maintaining the same fluid handwriting style as the left page.

Handwritten musical notation on the left page, consisting of several staves of notes and rests. The notation is dense and appears to be a single melodic line. There are some larger characters interspersed, possibly indicating specific notes or rests.

Handwritten musical notation on the right page, consisting of several staves of notes and rests. The notation is dense and appears to be a single melodic line. There are some larger characters interspersed, possibly indicating specific notes or rests.

Handwritten Japanese text in cursive style (sōsho) on the left page. The text is arranged in approximately 12 vertical columns, reading from right to left. The characters are fluid and connected, typical of the cursive script used in traditional Japanese calligraphy.

Handwritten Japanese text in cursive style (sōsho) on the right page. The text is arranged in approximately 12 vertical columns, reading from right to left. The characters are fluid and connected, typical of the cursive script used in traditional Japanese calligraphy.

Handwritten musical notation on the left page, consisting of several staves of notes and rests. The notation is dense and appears to be a single melodic line. There are some larger characters interspersed, possibly indicating specific notes or rests.

Handwritten musical notation on the right page, continuing from the left page. It features multiple staves of notes and rests, with some larger characters interspersed. The notation is dense and appears to be a single melodic line. There are some larger characters interspersed, possibly indicating specific notes or rests.

五ノ
 一ノ
 二ノ
 三ノ
 四ノ
 五ノ
 六ノ
 七ノ
 八ノ
 九ノ
 十ノ
 十一ノ
 十二ノ
 十三ノ
 十四ノ
 十五ノ
 十六ノ
 十七ノ
 十八ノ
 十九ノ
 二十ノ
 二十一ノ
 二十二ノ
 二十三ノ
 二十四ノ
 二十五ノ
 二十六ノ
 二十七ノ
 二十八ノ
 二十九ノ
 三十ノ
 三十一ノ
 三十二ノ
 三十三ノ
 三十四ノ
 三十五ノ
 三十六ノ
 三十七ノ
 三十八ノ
 三十九ノ
 四十ノ
 四十一ノ
 四十二ノ
 四十三ノ
 四十四ノ
 四十五ノ
 四十六ノ
 四十七ノ
 四十八ノ
 四十九ノ
 五十ノ

一ノ
 二ノ
 三ノ
 四ノ
 五ノ
 六ノ
 七ノ
 八ノ
 九ノ
 十ノ
 十一ノ
 十二ノ
 十三ノ
 十四ノ
 十五ノ
 十六ノ
 十七ノ
 十八ノ
 十九ノ
 二十ノ
 二十一ノ
 二十二ノ
 二十三ノ
 二十四ノ
 二十五ノ
 二十六ノ
 二十七ノ
 二十八ノ
 二十九ノ
 三十ノ
 三十一ノ
 三十二ノ
 三十三ノ
 三十四ノ
 三十五ノ
 三十六ノ
 三十七ノ
 三十八ノ
 三十九ノ
 四十ノ
 四十一ノ
 四十二ノ
 四十三ノ
 四十四ノ
 四十五ノ
 四十六ノ
 四十七ノ
 四十八ノ
 四十九ノ
 五十ノ

Handwritten musical notation on the left page, featuring a complex arrangement of notes, rests, and clefs. The notation is dense and fills most of the page.

Handwritten musical notation on the right page, continuing the piece from the left page. It includes various musical symbols and a large, stylized signature or flourish at the bottom.

Handwritten musical notation on the left page, consisting of several staves of notes and rests. The notation is dense and appears to be a single melodic line. There are some red markings, possibly indicating specific notes or rests.

Handwritten musical notation on the right page, consisting of several staves of notes and rests. The notation is dense and appears to be a single melodic line. There are some red markings, possibly indicating specific notes or rests.

