

娘太平記操早引

初編

上


A13
4449
1




娘太平記操早引巻首

何^{なん}が^がと^と呼^よぶ^ぶ儒^{にう}先^{せん}生^{せい}月^{つき}の^の春^{はる}の^の生^{なま}張^{はり}を^を生^{なま}て^て唐^{たう}
 の^の孔^{こう}孟^{もう}の^の声^{せい}色^{しき}を^を傳^{つた}へ^へ講^{かう}座^ざに^に薫^か骨^{こつ}持^ぢて^て唐^{たう}
 ら^ら々^々四^し角^{かく}の^の文^{ぶん}字^じの^の故^こ事^じ來^{らい}歴^{れき}証^{じやう}を^を辨^わん^ん
 論^{ろん}す^すの^の聽^き者^{しや}更^{さら}に^に耳^{みみ}我^{われ}清^{せい}き^き淡^{たん}以^い百^{ひやく}坐^ざを^を辨^わん^ん
 都^つ合^{がう}一^{いつ}貫^{くわん}三^{さん}百^{ひやく}の^の受^う料^{りやう}中^{ちゆう}に^に唐^{たう}人^{にん}乃^{なほ}寫^{しやう}を^を辨^わん^ん
 く^く他^たま^まる^ると^とい^いふ^ふに^に解^げす^すに^に其^{その}故^こを^を辨^わん^んす^すべ^べし^し却^{かえ}り^り義^ぎ



古交の節の態歎場へ鬼と噂色一邪権を姑
も鼻ららおきて涙を流し歌舞妓狂の情を視
てら苦の會へ偏屈親命も
此是の心聞は曉し易く目も視て速く解は捷徑
彼自業の口へ苦く毒を以清熱煎のまじりしと
等しと作者の些と上戸はと回し
讀でも解をね論より証据文肯


便凡夫の信物なまば百日の徳法何童の居佛と
ま字の潜解と一は土無理の世の世に成
漢ま真まのぬの冊子に所理因縁故の
厚米辰の足ま形功能をもて厚味も
毒中のかへす百船着とも辰の如し
人情滑然の何ゆる成は金計の成作と
わく江をさすごう語ご思はは




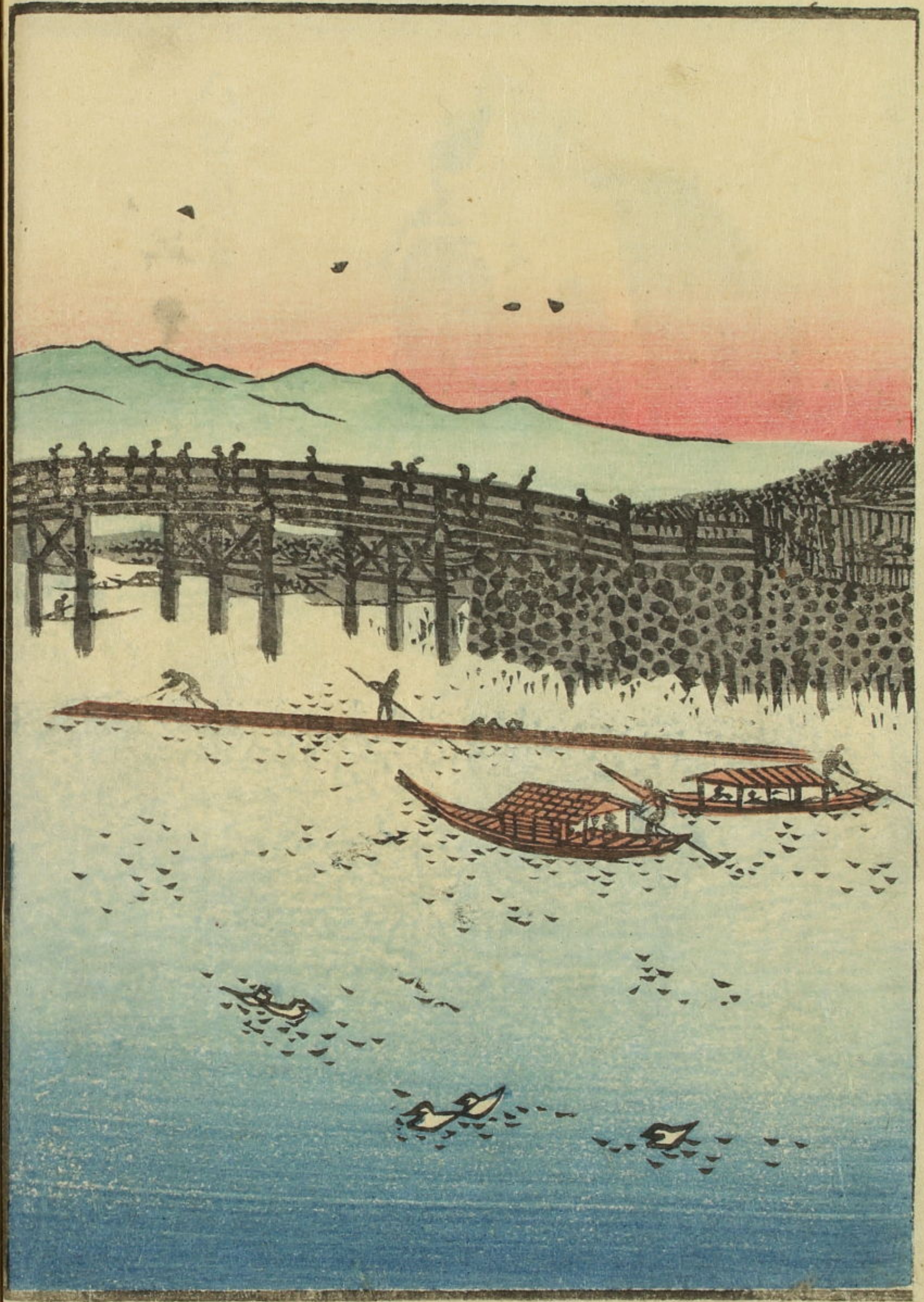


八百屋半六が一子
繁兵衛



やねん
八百半の
調市の
半松

美婦於玉



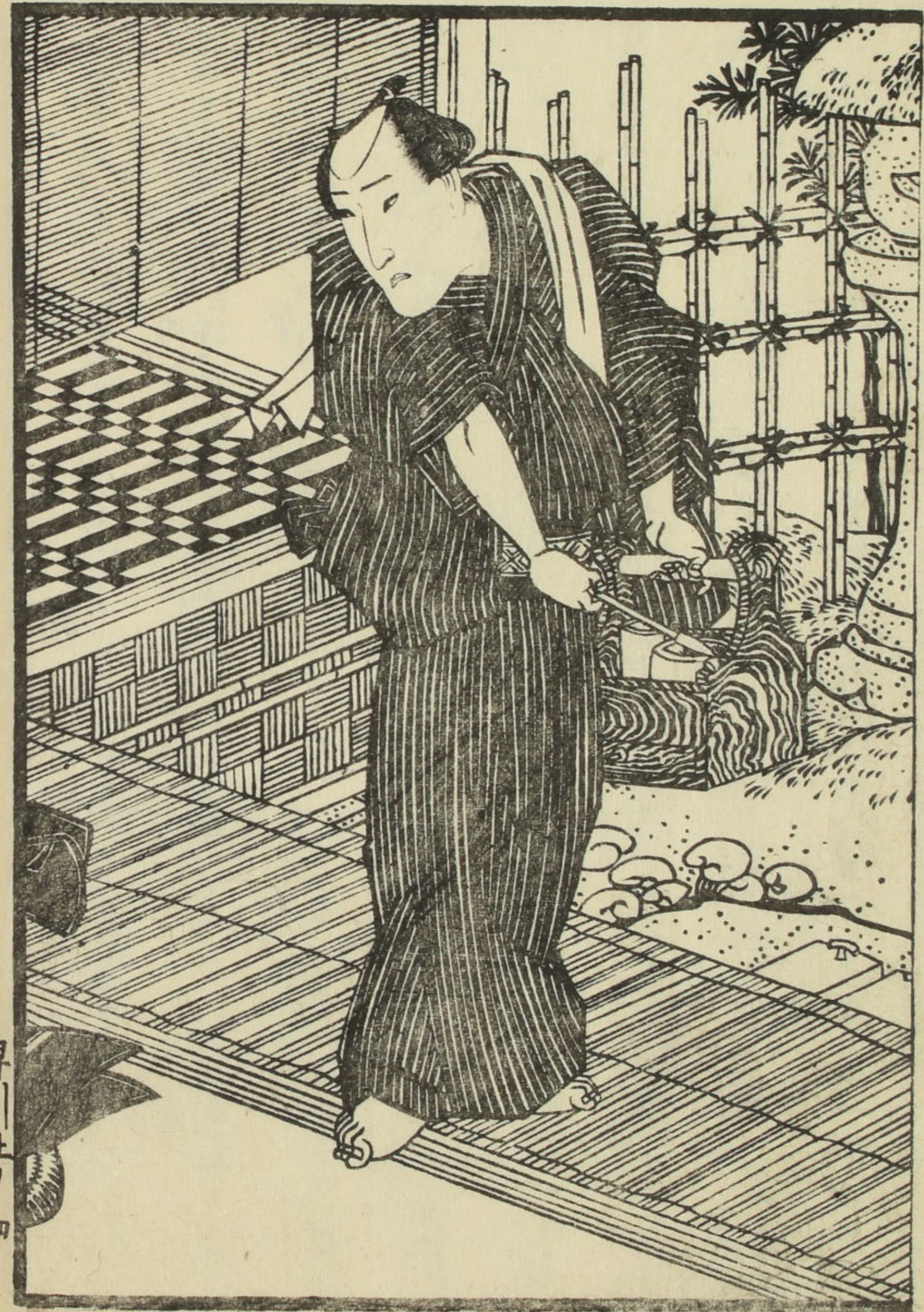
盛衰 栄枯 Shōka Eikū
 娘太平記操早引上之巻



江戸 曲山人戯作

第一回

あぐま とうひやちやうやちやうあまのひき
 吾妻の八百八丁八百萬青物鬻ぐ問屋株八百半が見
 せ せ せ せ せ せ
 世にさふ銅市もさやう果て銅市八表の塵芥掃取
 けり 銅湯より悔りある息子の舞臺清きおりの
 浴衣小茶博多の平づけくく せ せ せ せ せ せ
 然るもこの世にさふ浮世の婦人ハカマ



Handwritten text in a cursive script, likely a historical document or manuscript. The text is written in a dark ink on aged paper. It consists of several lines of text, with some words appearing to be in a different script or dialect. The text is somewhat difficult to decipher due to the cursive style and the age of the document.

Handwritten text in a cursive script, likely a historical document or manuscript. The text is written in a dark ink on aged paper. It consists of several lines of text, with some words appearing to be in a different script or dialect. The text is somewhat difficult to decipher due to the cursive style and the age of the document.



