

厚
 金
 符
 屋

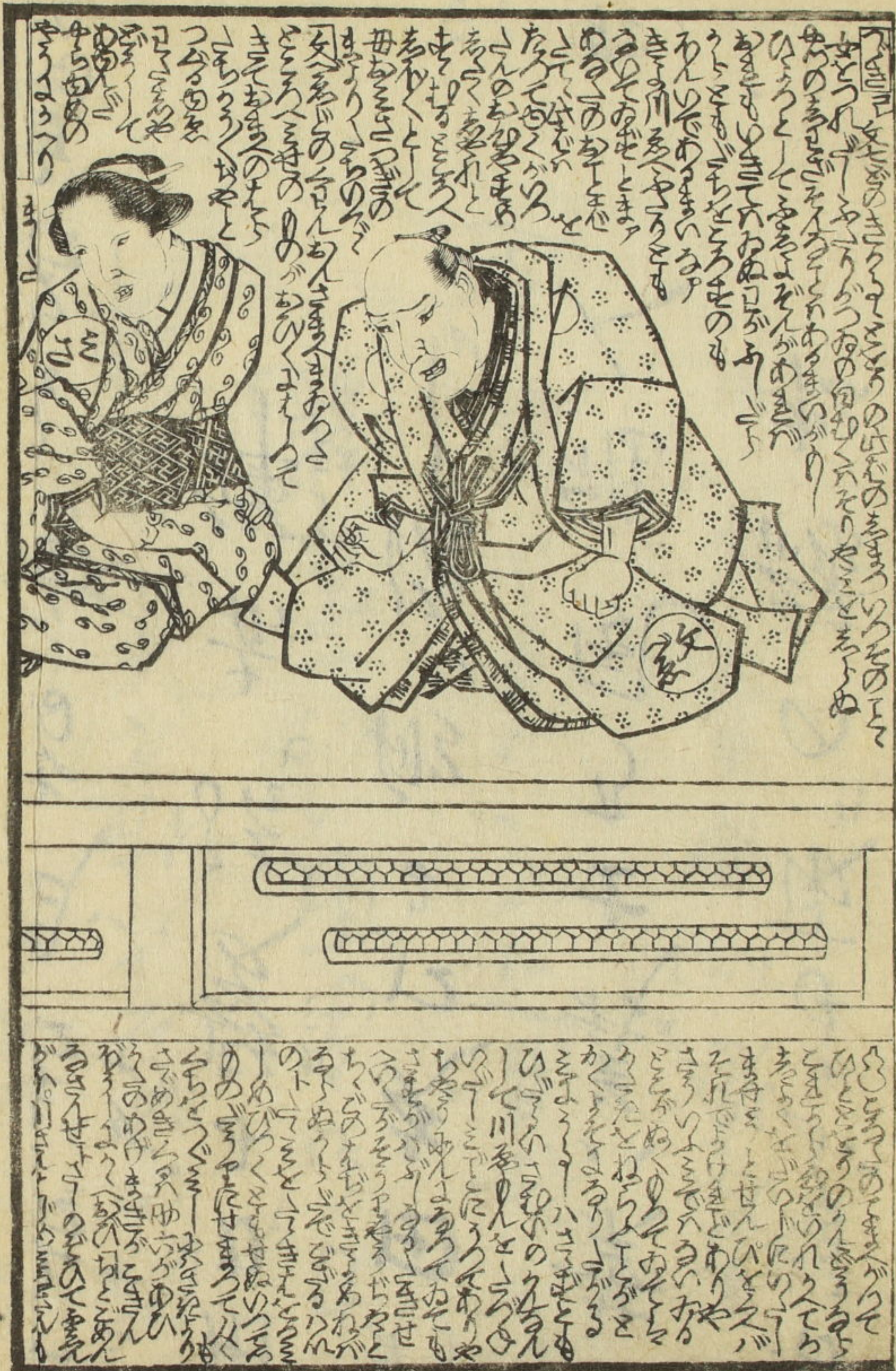
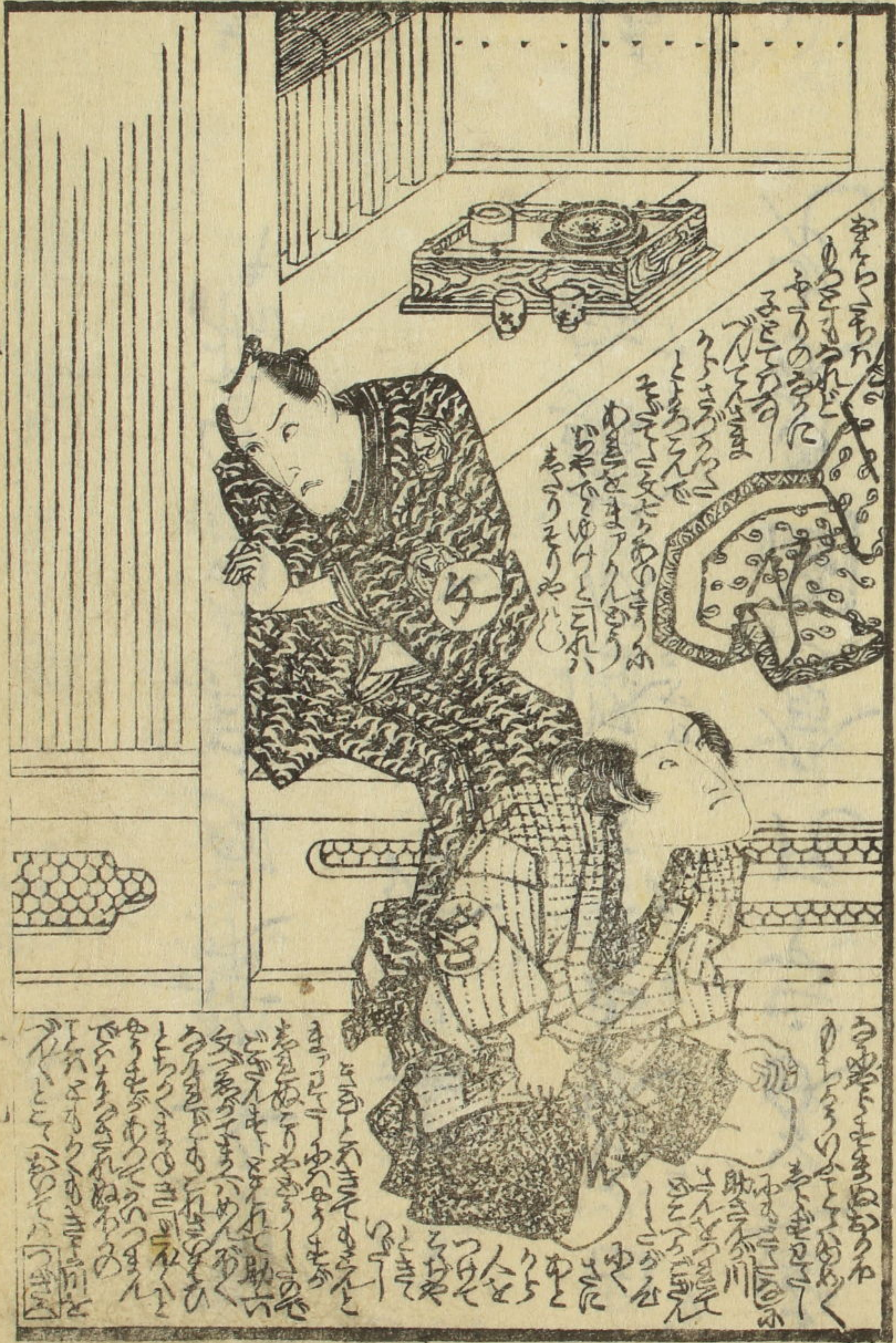
 後

星

^13
 3911
 2



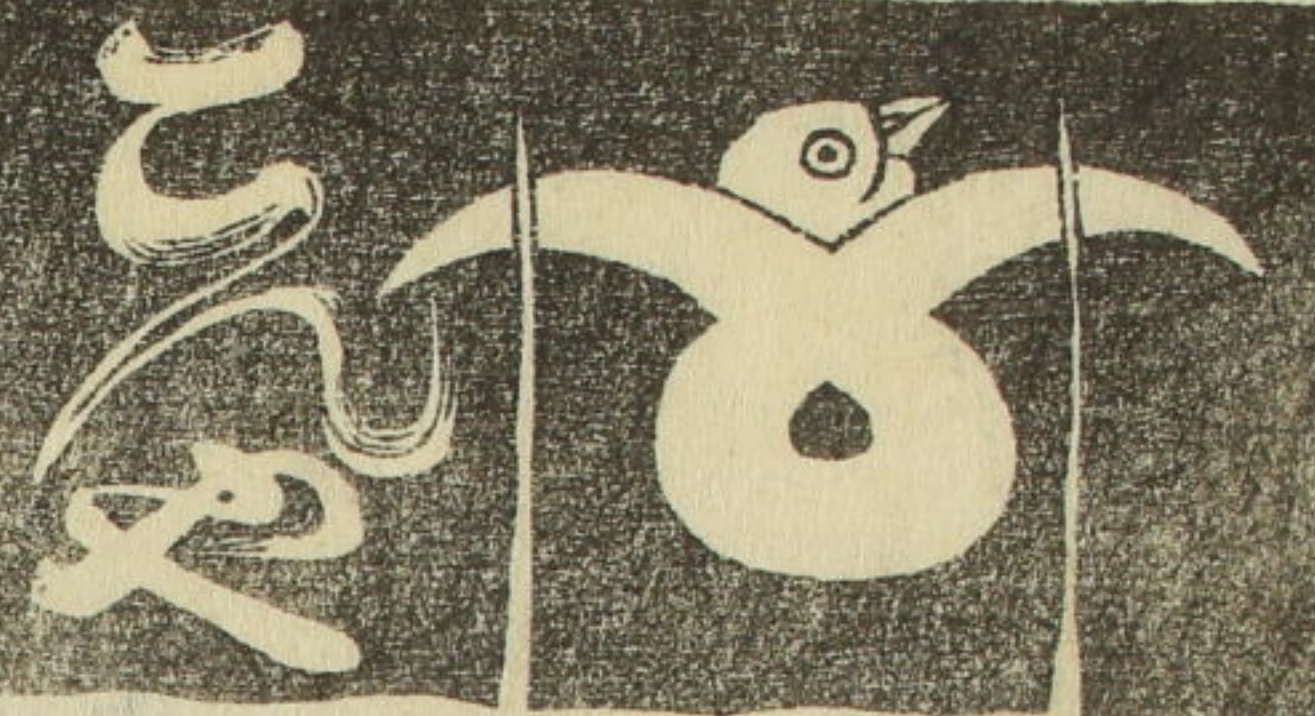




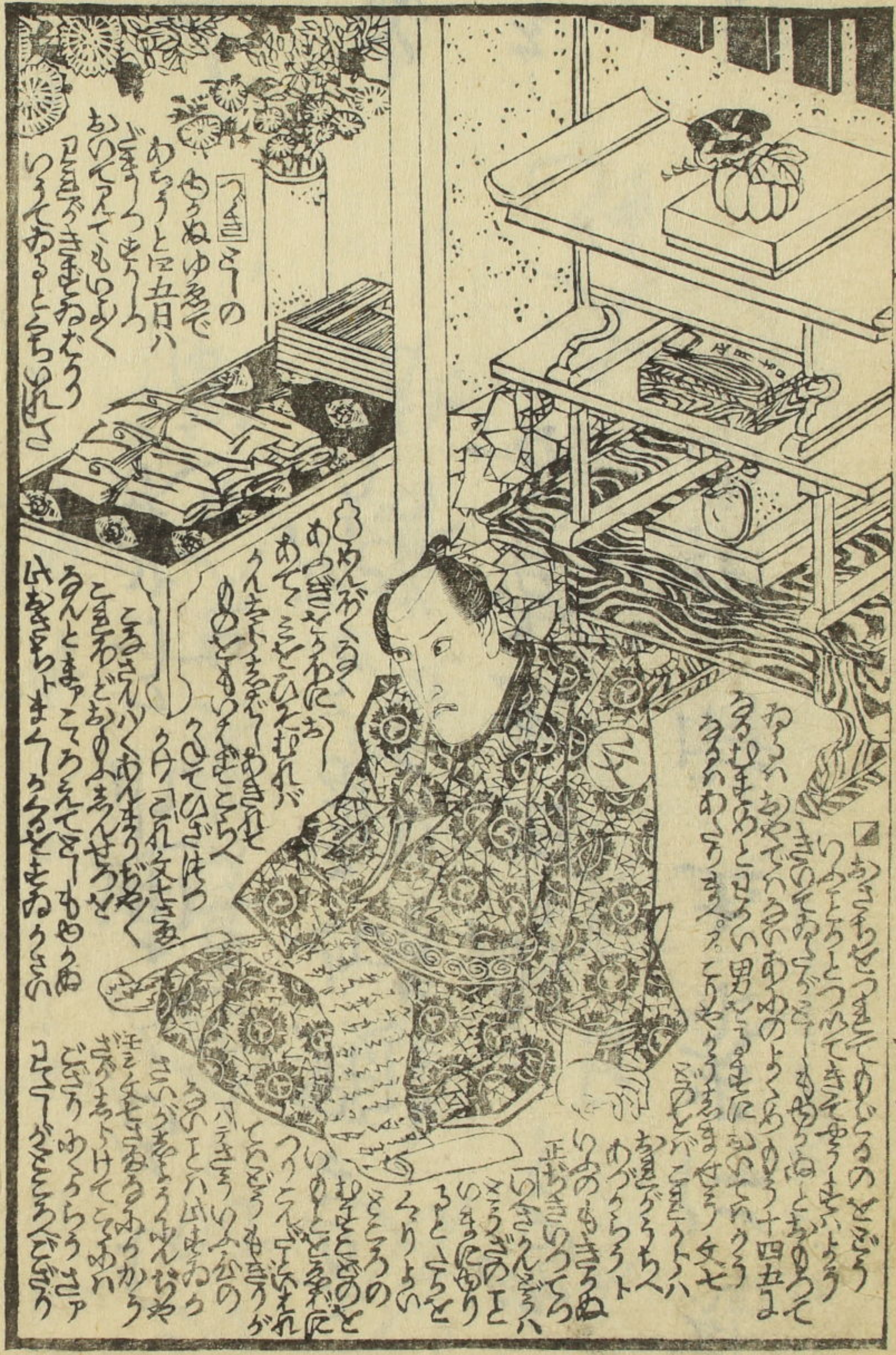
Handwritten text in vertical columns, likely a play script or commentary, surrounding the illustration. The text is written in a cursive style.

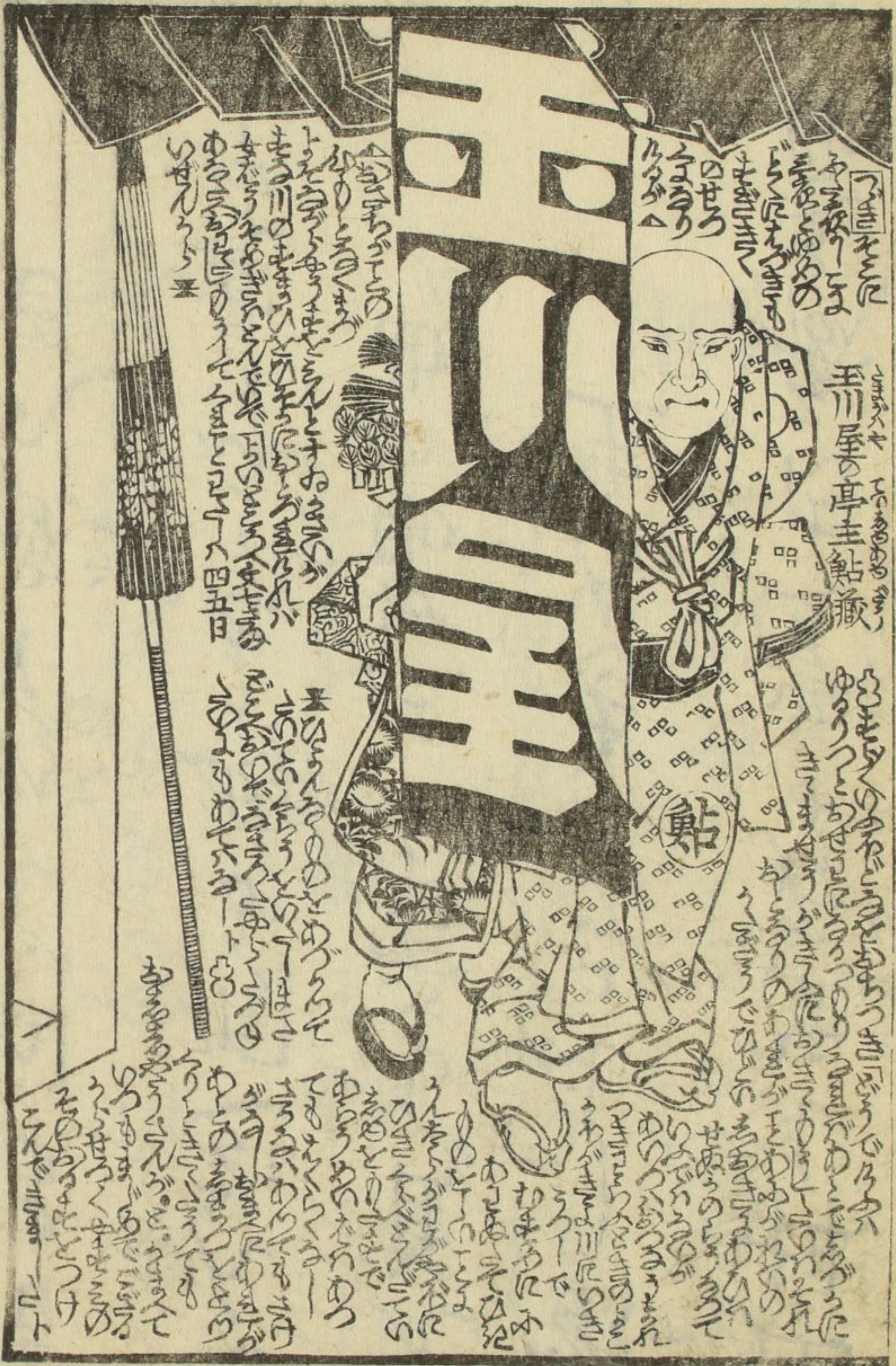
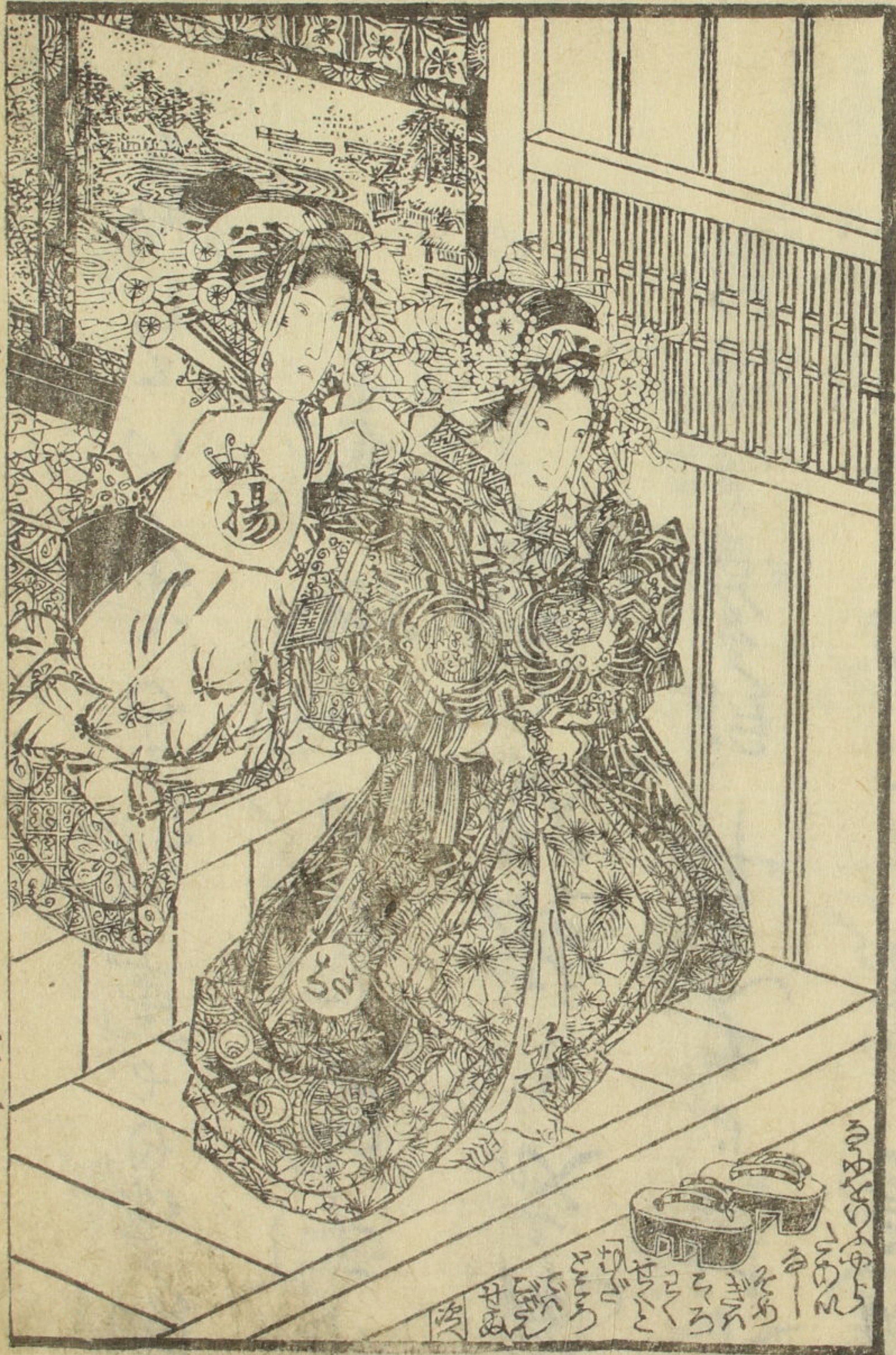


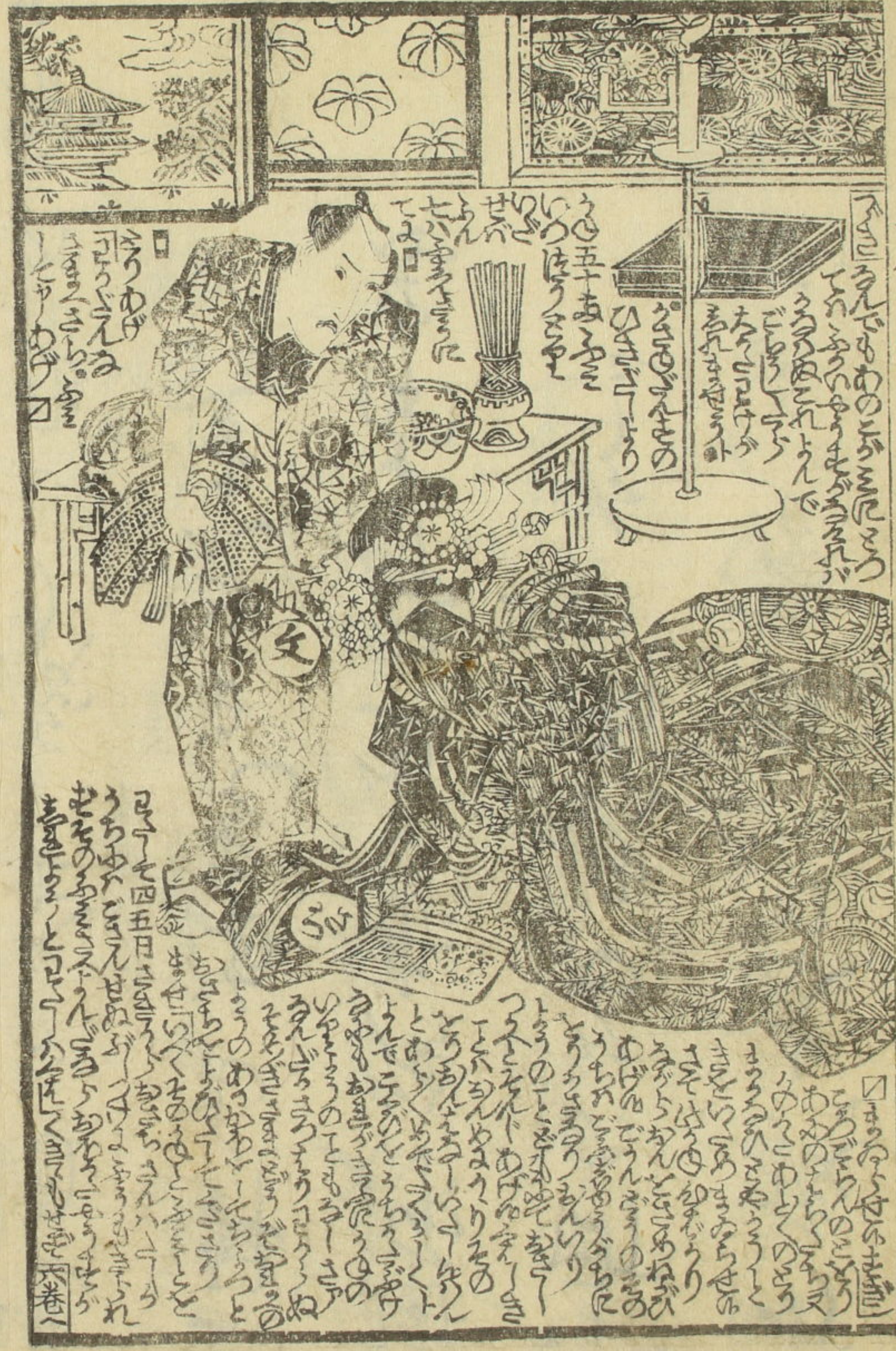
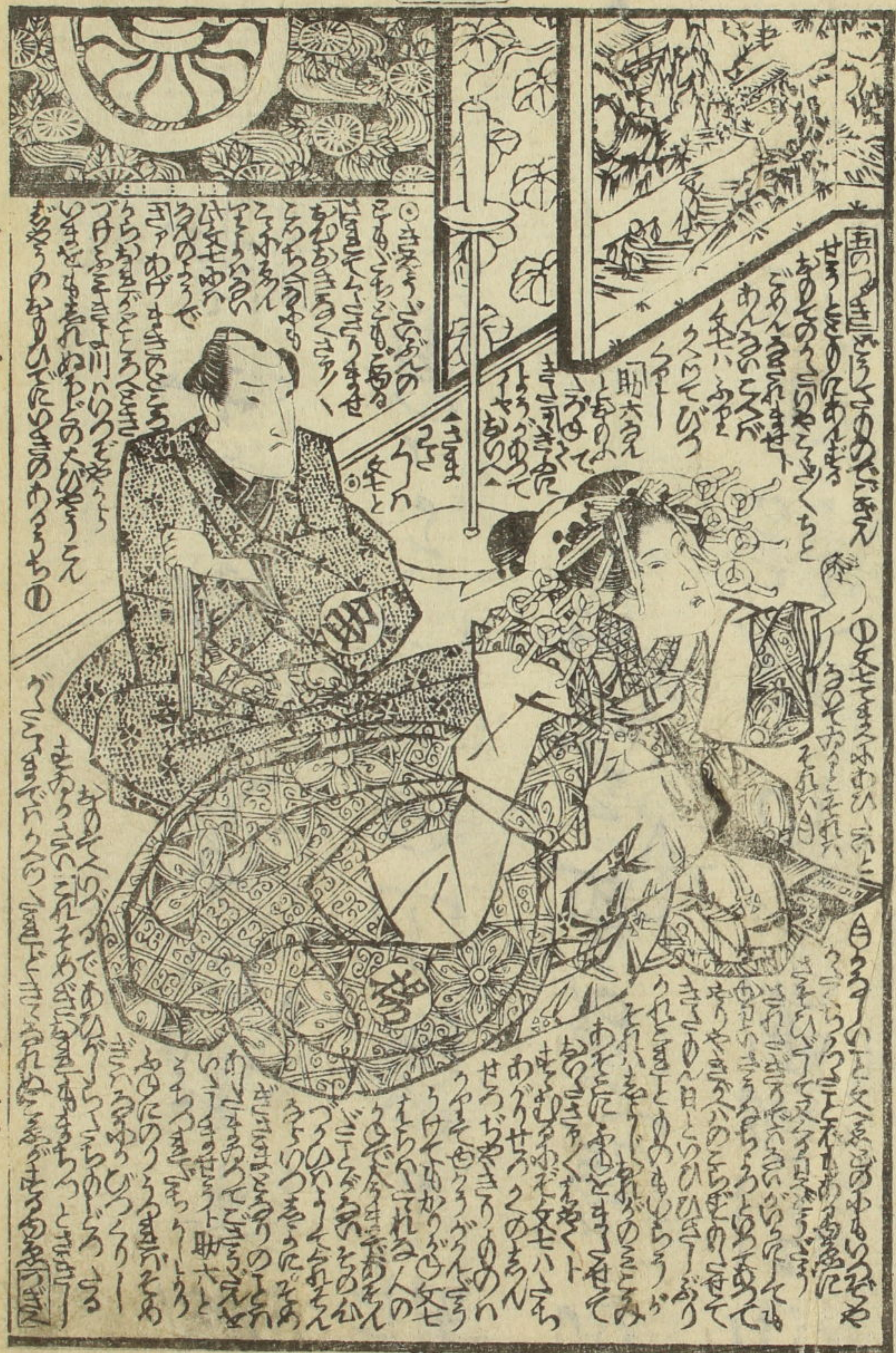
Handwritten text in vertical columns, likely a play script or commentary, surrounding the illustration. The text is written in a cursive style.





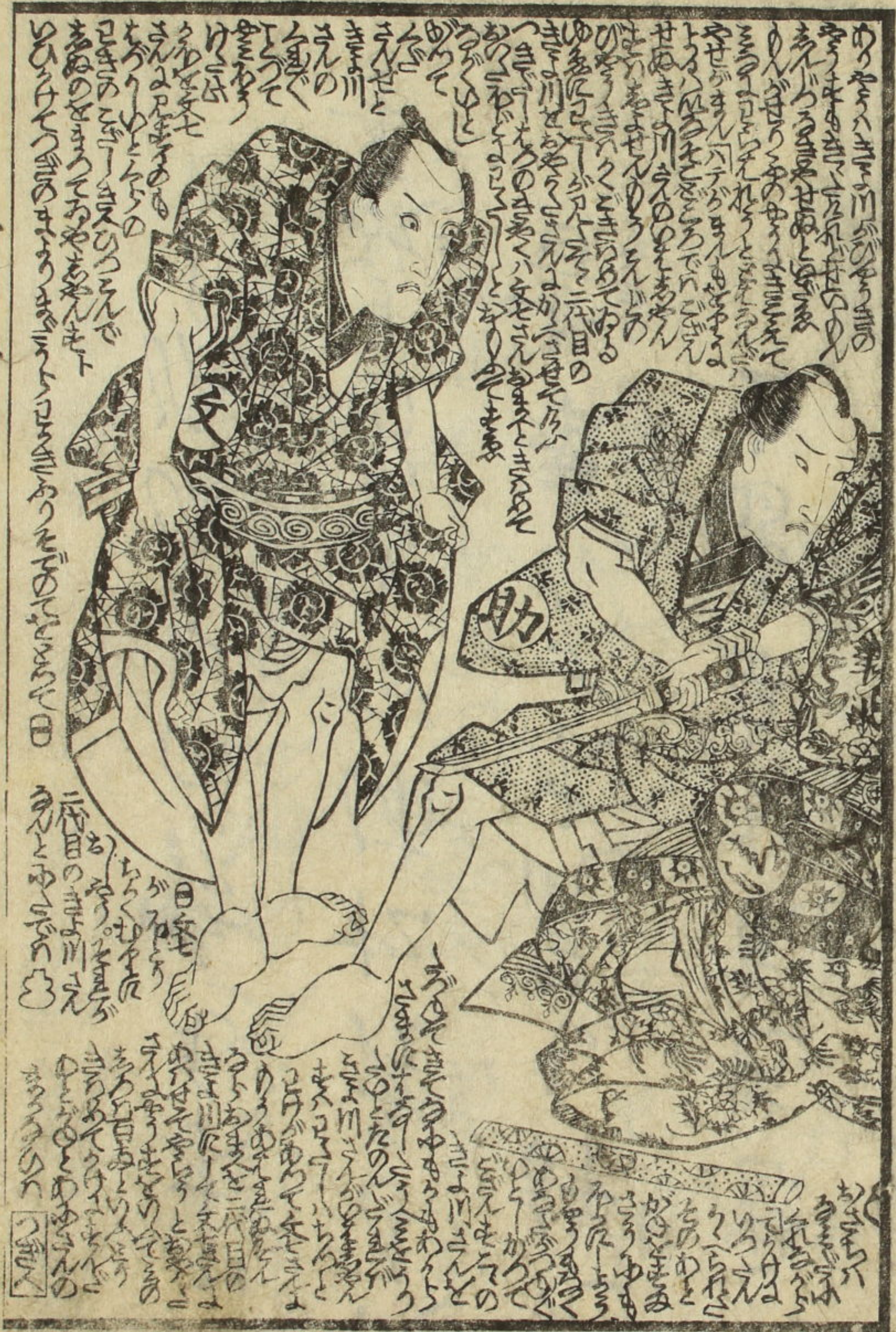






Handwritten text on the right margin of the top page.

Handwritten text on the right margin of the bottom page.





<p>清川雁金紺屋作早添 國貞画 全六冊</p>	<p>紅絹甚三 當世職人合 國貞画 全六冊</p>	<p>美艷仙女香 柳亭種彦作 國貞画 全六冊</p>	<p>尾上松絲百物語 尾上梅幸作 國貞画 全六冊</p>	<p>絲櫻花本朝女訓 朝女訓 全六冊 國貞画</p>	<p>傾城水滸傳貳編 曲亭馬琴作 國貞画 全八冊</p>	<p>情競傾城嵩 飯棟秀佳作 國貞画 全六冊</p>	<p>福神御利生於金返 南仙笑楚滿人作 國貞画 全二冊</p>	<p>新選大持 國貞画 全二冊</p>	<p>仙鶴堂鶴屋喜右衛門板 江戸通油町翠橋之西 國貞画 全六冊</p>	<p>草紙 式亭三馬作 國貞画 全六冊</p>
------------------------------	-----------------------------------	------------------------------------	--------------------------------------	------------------------------------	--------------------------------------	------------------------------------	---	-------------------------	---	---------------------------------

全六冊大尾



筆眼 七福



後編十五葉
加藤利助

歌川國貞画 柳亭種彦作

Handwritten notes at the bottom of the page, including the number '15' and some illegible characters.

