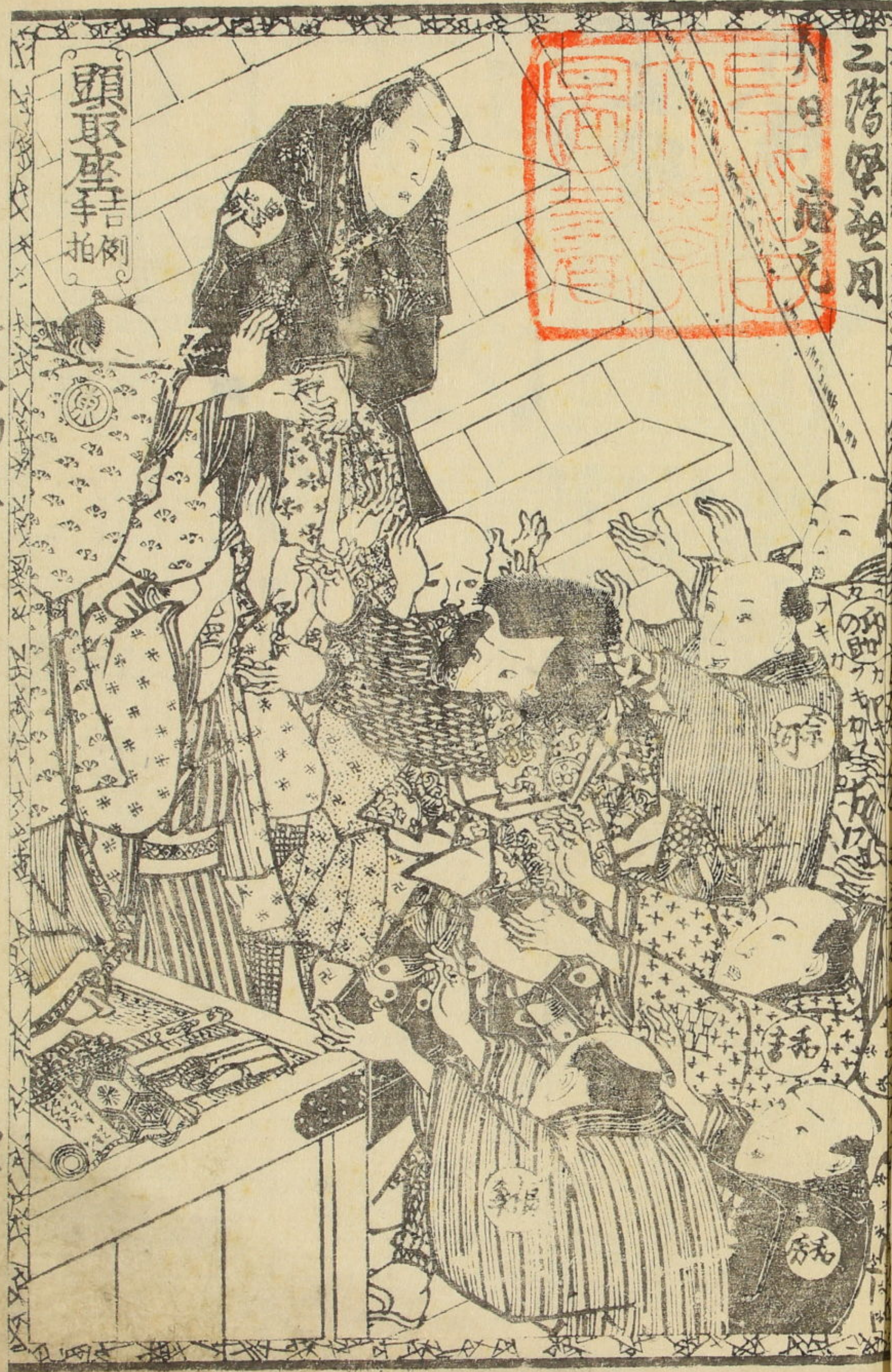




柳亭種彦作
 歌川國貞画
 采本製初編上
 楽屋^{ガヤ}ハ^マ續^ツき^ニ繪
 お仲清七
 物のしら

^13
 3875
 1





頭取座吉例
手拍

八日
之階保用

正木乃再

3875
1

十のりりりり

りりりり

吉例中三階の圖

皇孫

大

河

之

孫

中

孫

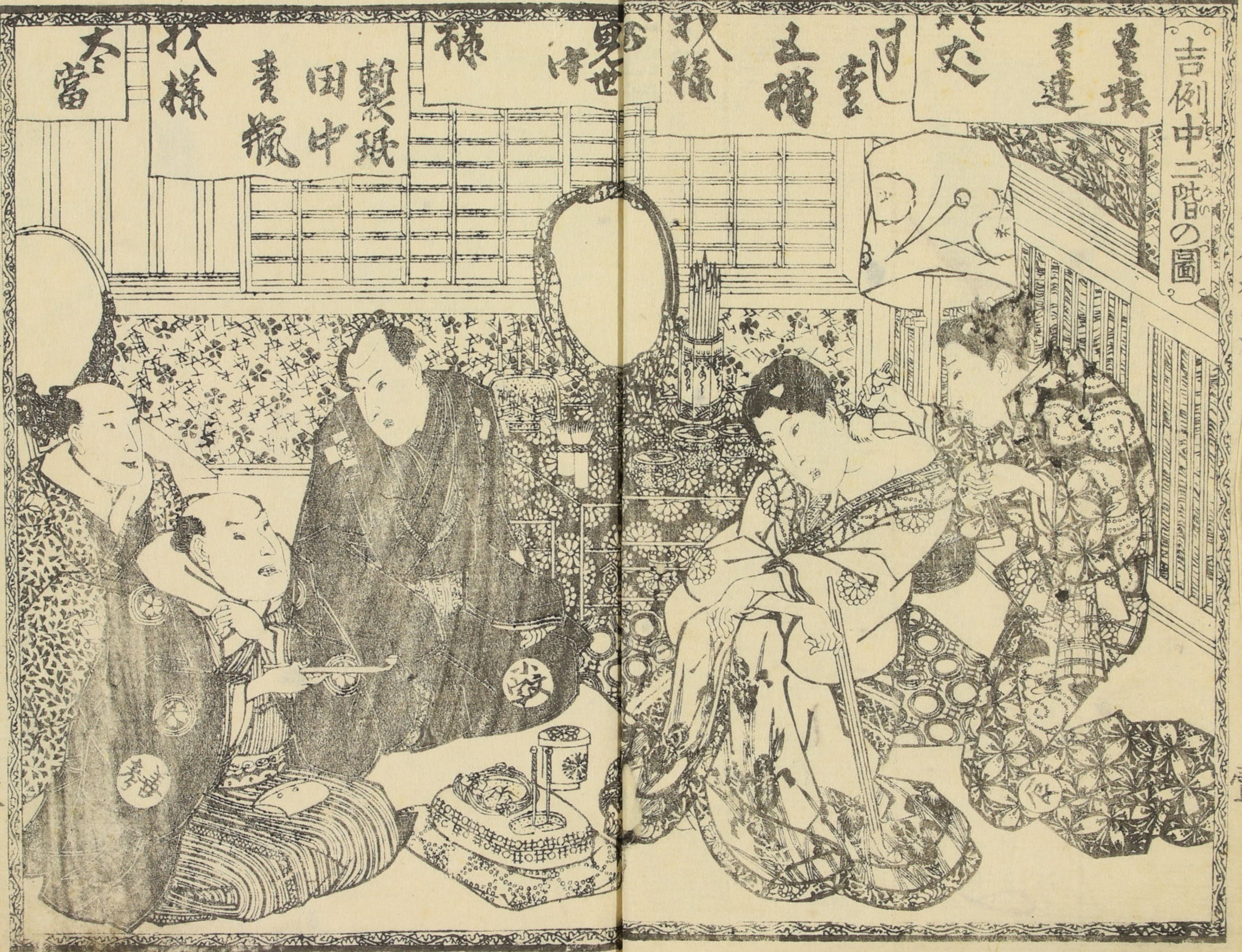
新

田

中

孫

大



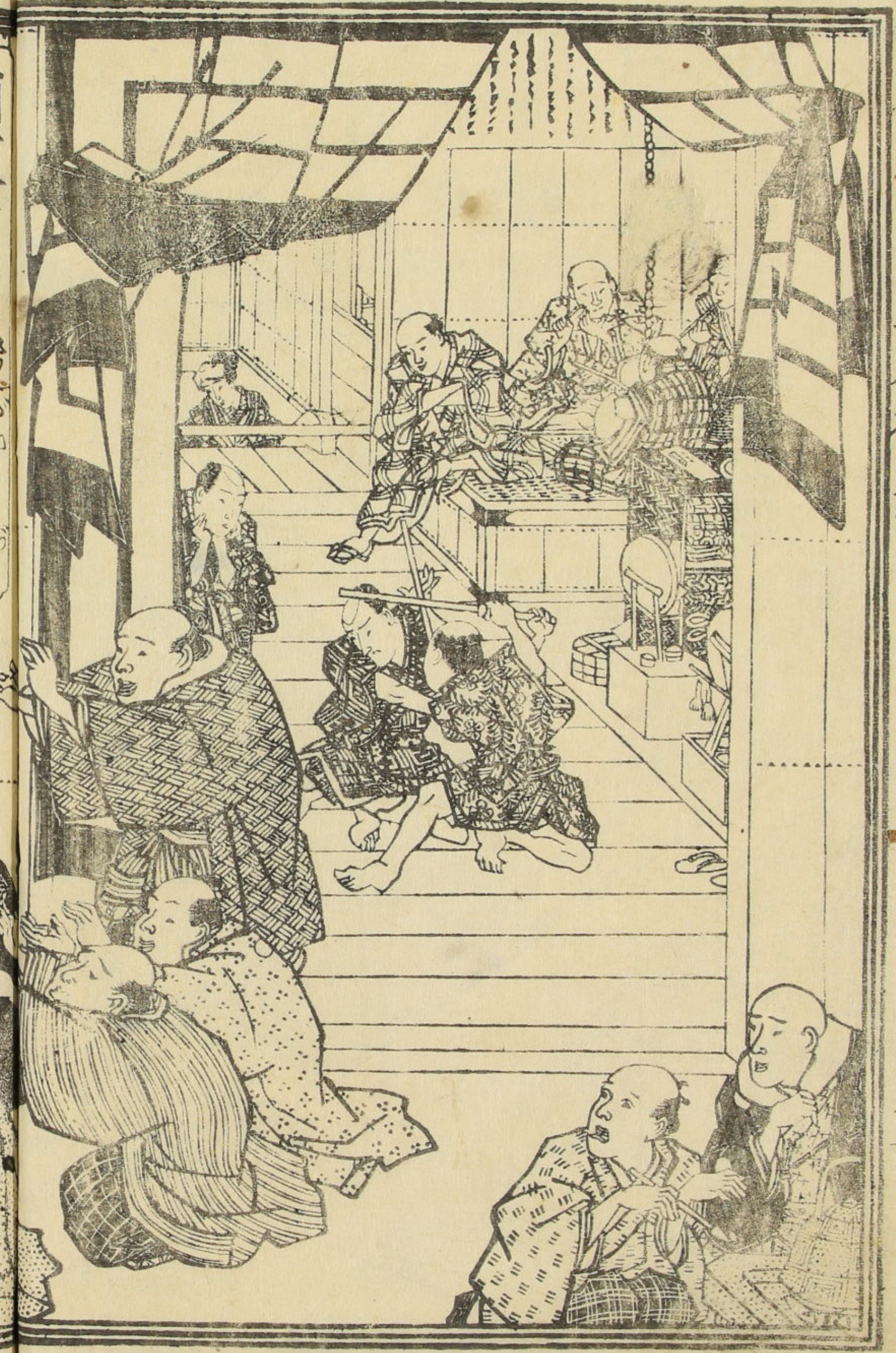
上ノ三階

三階

三階



前板吉例三階の圖



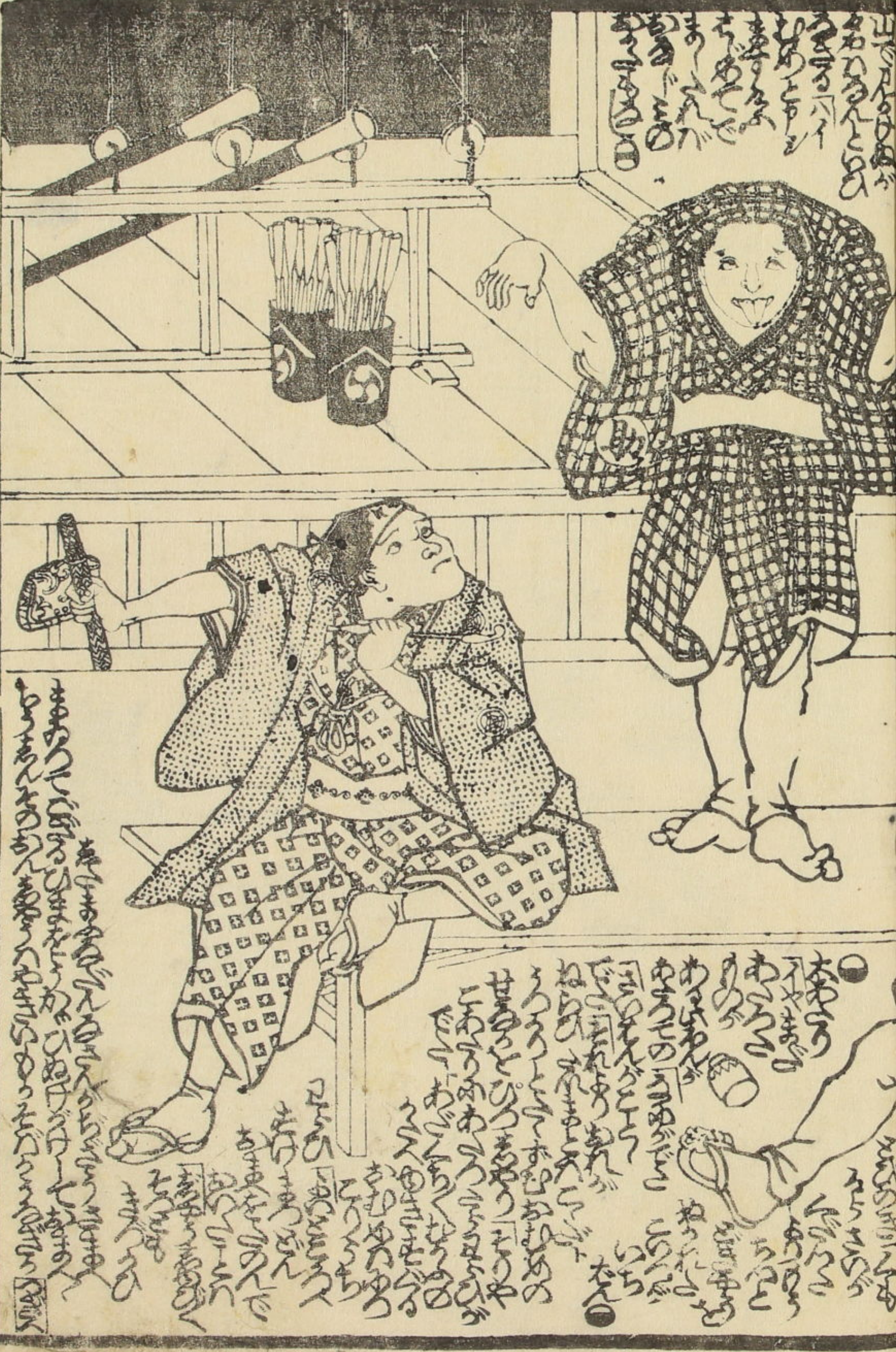
正本初拜

三本初拜

大和屋



○せんまもれぬのうら
 ちをうらうらうらうら
 めのここのまのうらうら
 うらうらうらうらうらうら
 うらうらうらうらうらうら
 うらうらうらうらうらうら
 うらうらうらうらうらうら
 うらうらうらうらうらうら



○せんまもれぬのうら
 ちをうらうらうらうら
 めのここのまのうらうら
 うらうらうらうらうらうら
 うらうらうらうらうらうら
 うらうらうらうらうらうら
 うらうらうらうらうらうら
 うらうらうらうらうらうら

○せんまもれぬのうら
 ちをうらうらうらうら
 めのここのまのうらうら
 うらうらうらうらうらうら
 うらうらうらうらうらうら
 うらうらうらうらうらうら
 うらうらうらうらうらうら
 うらうらうらうらうらうら

Vertical Japanese text columns at the top of the page, likely serving as a title or introductory text for the scene below.



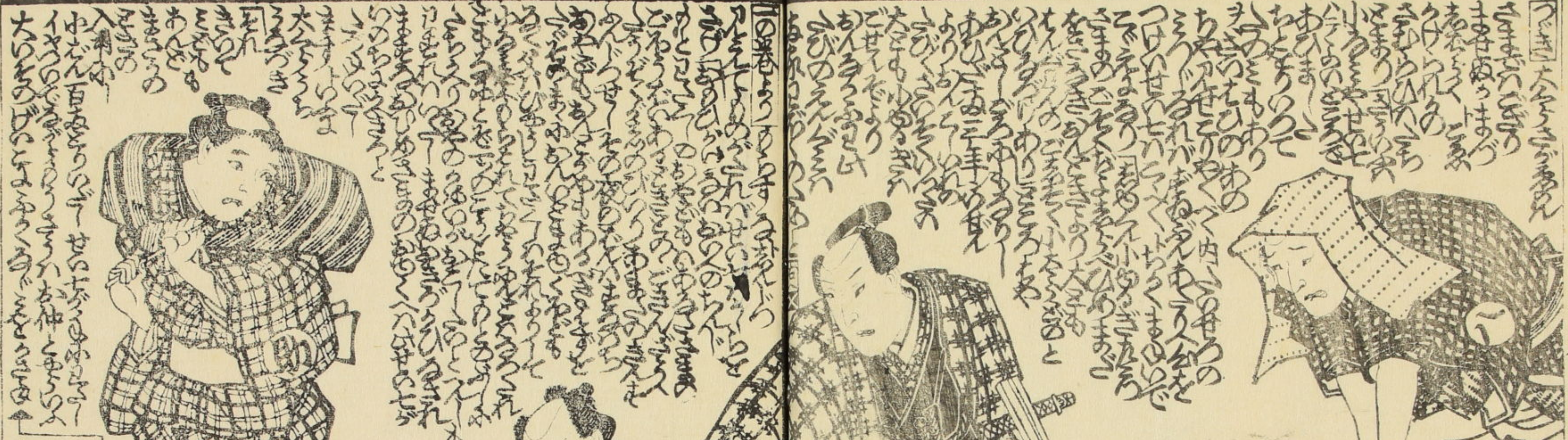
Vertical Japanese text columns at the bottom of the page, providing commentary or dialogue for the scene.

山本 再

Handwritten notes or signatures in the bottom left corner.

Vertical columns of handwritten Japanese text on the left side of the top panel.

Vertical columns of handwritten Japanese text on the left side of the bottom panel.



山本権兵衛

五

Vertical columns of handwritten Japanese text on the right side of the top panel.

Vertical columns of handwritten Japanese text on the right side of the bottom panel.

Right column of text at the top of the right page, written in vertical Japanese characters.

Middle column of text on the right page, written in vertical Japanese characters.

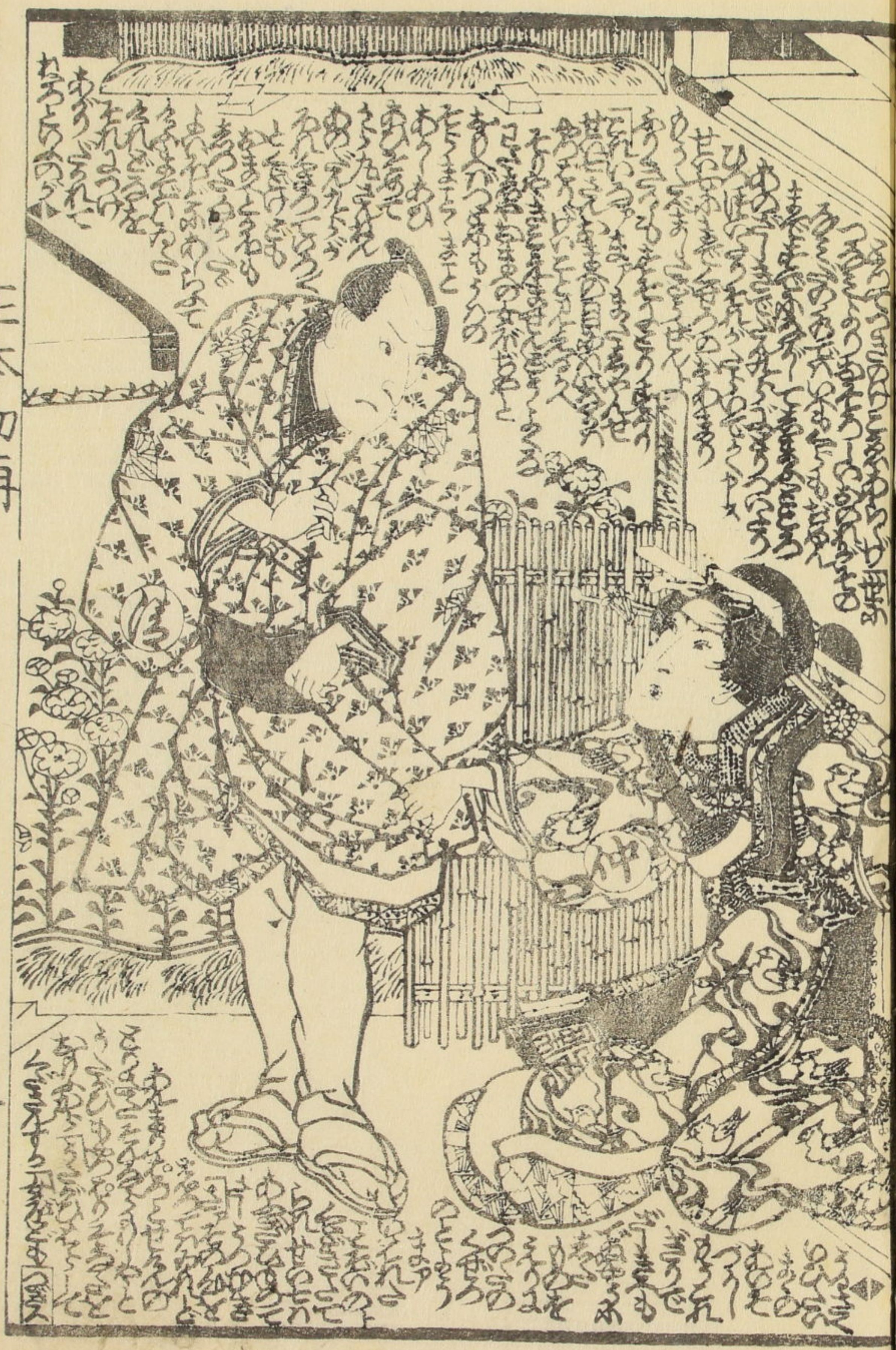
Bottom column of text on the right page, written in vertical Japanese characters.



Top left column of text, written in vertical Japanese characters.

Middle left column of text, written in vertical Japanese characters.

Bottom left column of text, written in vertical Japanese characters.



正本
再



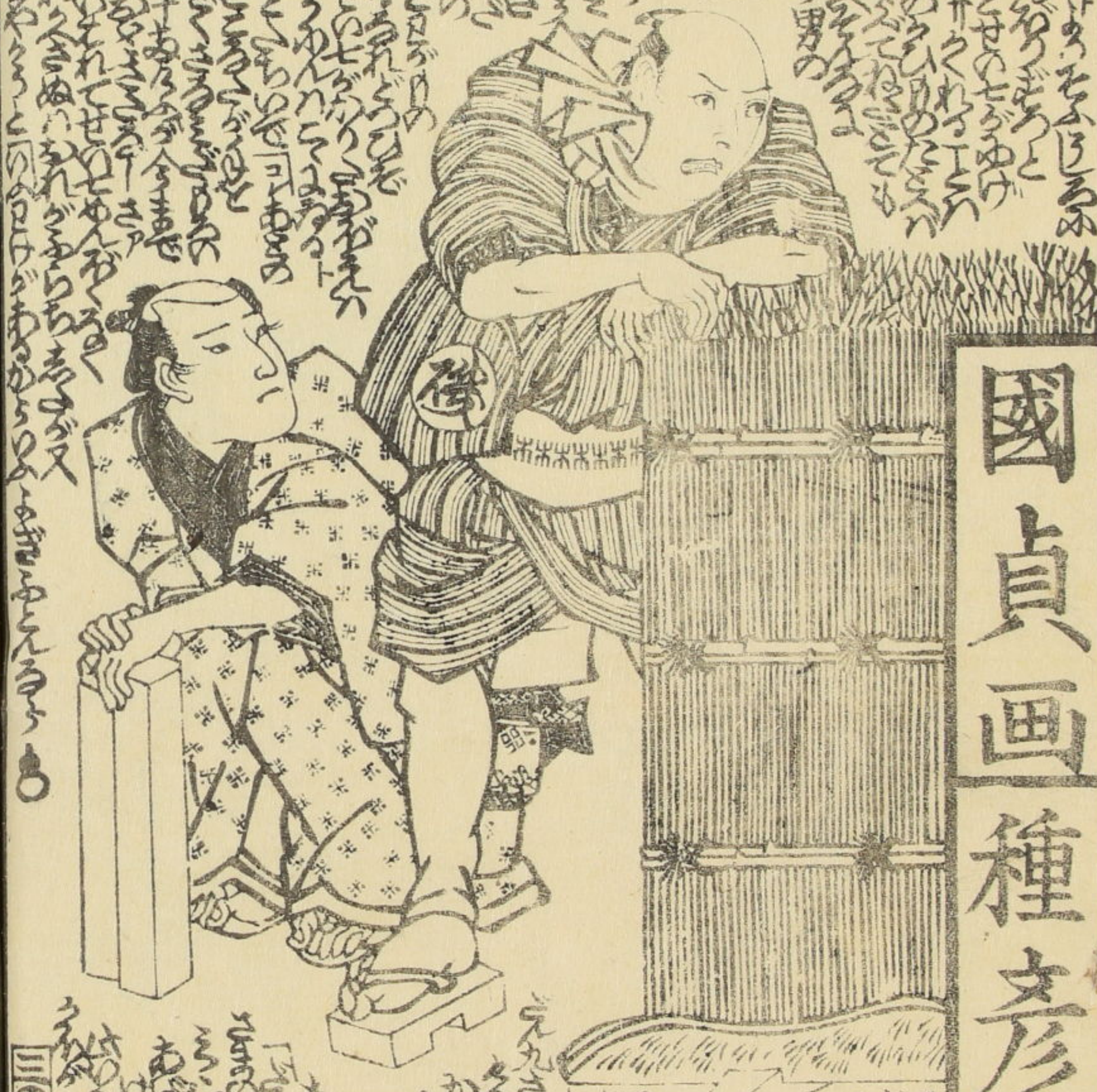
正本
再

Handwritten text in vertical columns, likely a preface or commentary, located at the top of the left page.



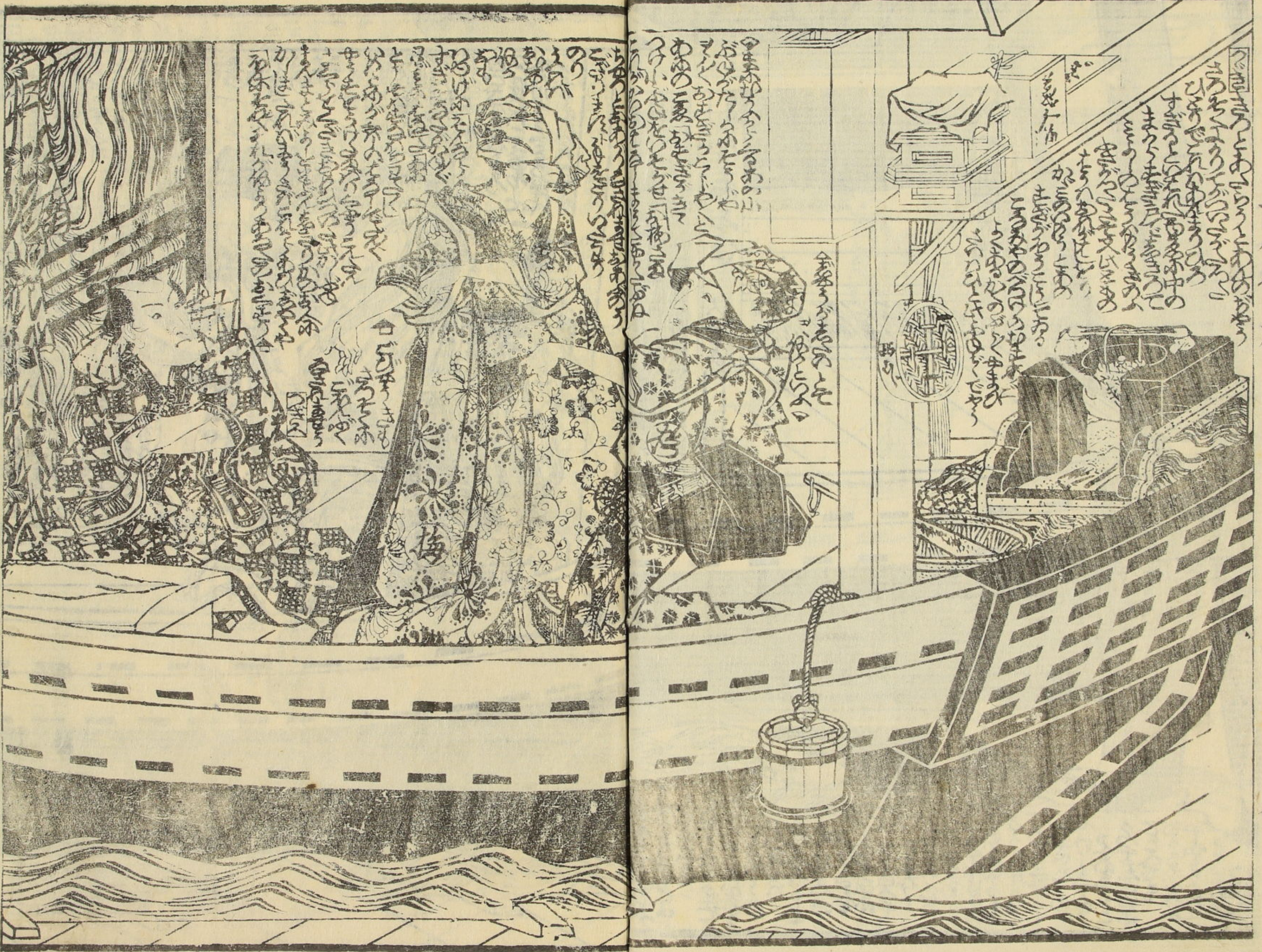
Handwritten text in vertical columns at the bottom of the left page, likely a postscript or additional commentary.

Handwritten text in vertical columns at the top of the right page, likely a preface or commentary.



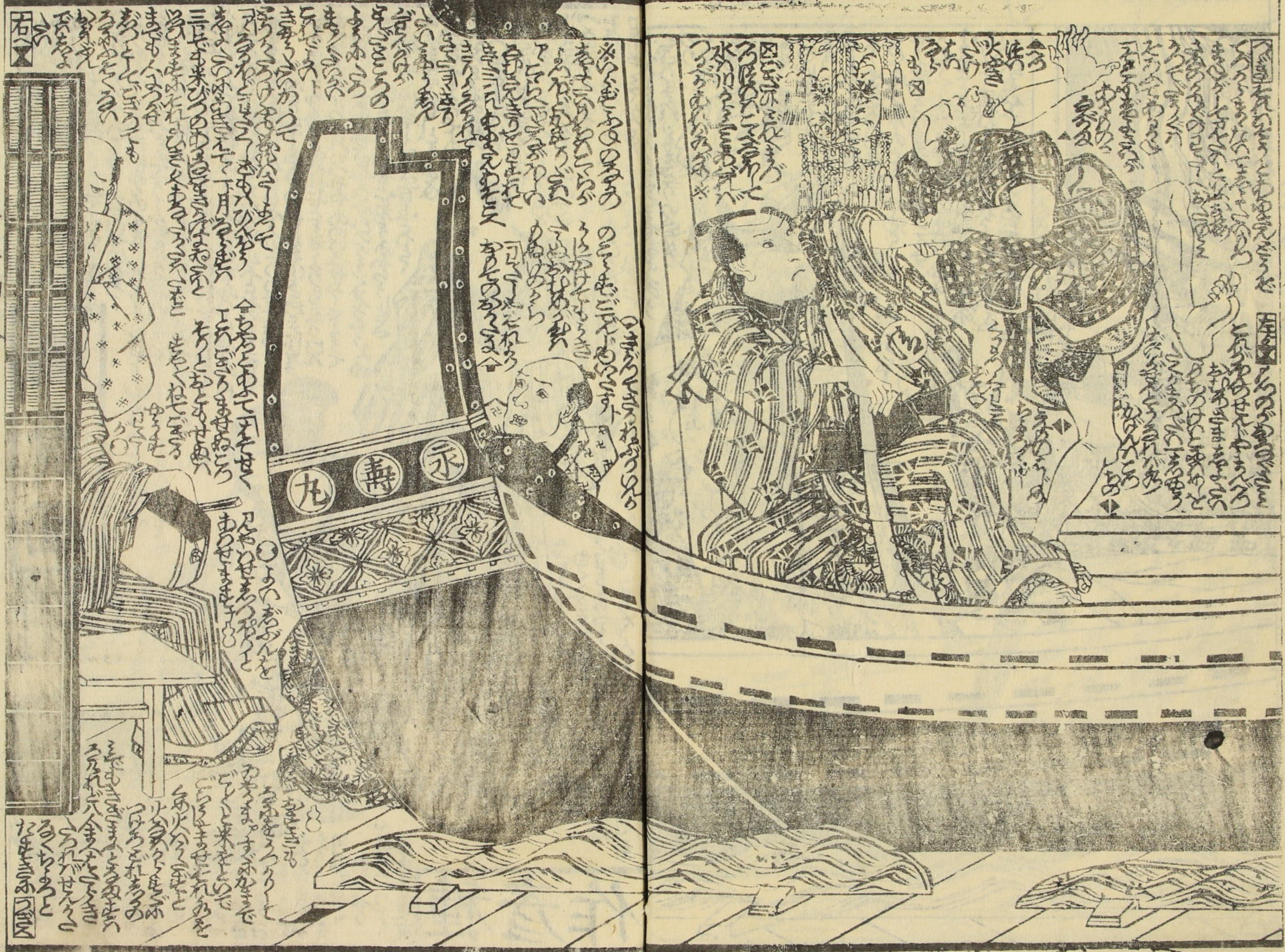
Handwritten text in vertical columns at the bottom of the right page, likely a postscript or additional commentary.

國貞画種彦作



日本列島

正不不月



三十一

石

石

