



門へ13
3904
1

門へ13
3854
2
卷

疾 疾 中 編

山東京傳作
歌川豊國画
甘泉堂梓

中 編 上 冊



疾 疾 中 編
○ 疾 疾 中 編 上 冊
○ 疾 疾 中 編 上 冊
○ 疾 疾 中 編 上 冊

歌川 豊國

疾 疾 中 編
○ 疾 疾 中 編 上 冊
○ 疾 疾 中 編 上 冊
○ 疾 疾 中 編 上 冊



くきん

山男八ん及
 下の
 さつ
 おうの
 つと
 せ
 の



石松

山男八ん及
 下の
 さつ
 おうの
 つと
 せ
 の



Handwritten text in the upper left corner of the illustration, including the name 'Mitsunobu' and other characters.

Handwritten text on the right side of the illustration, possibly a title or a note.

Handwritten text in the lower right corner of the illustration, including a circled number '③' and several lines of text.



Handwritten text in the upper left corner of the illustration, including the name 'Mitsunobu' and other characters.

Handwritten text in the lower right corner of the illustration, including a circled number '①' and several lines of text.

Vertical handwritten text on the left margin of the page.

Vertical handwritten text on the left margin of the page.

Handwritten text in the upper right corner of the right page, likely a list of names or a commentary related to the scene below.



Handwritten text in the upper left corner of the left page, providing context or a list of names for the scene depicted below.



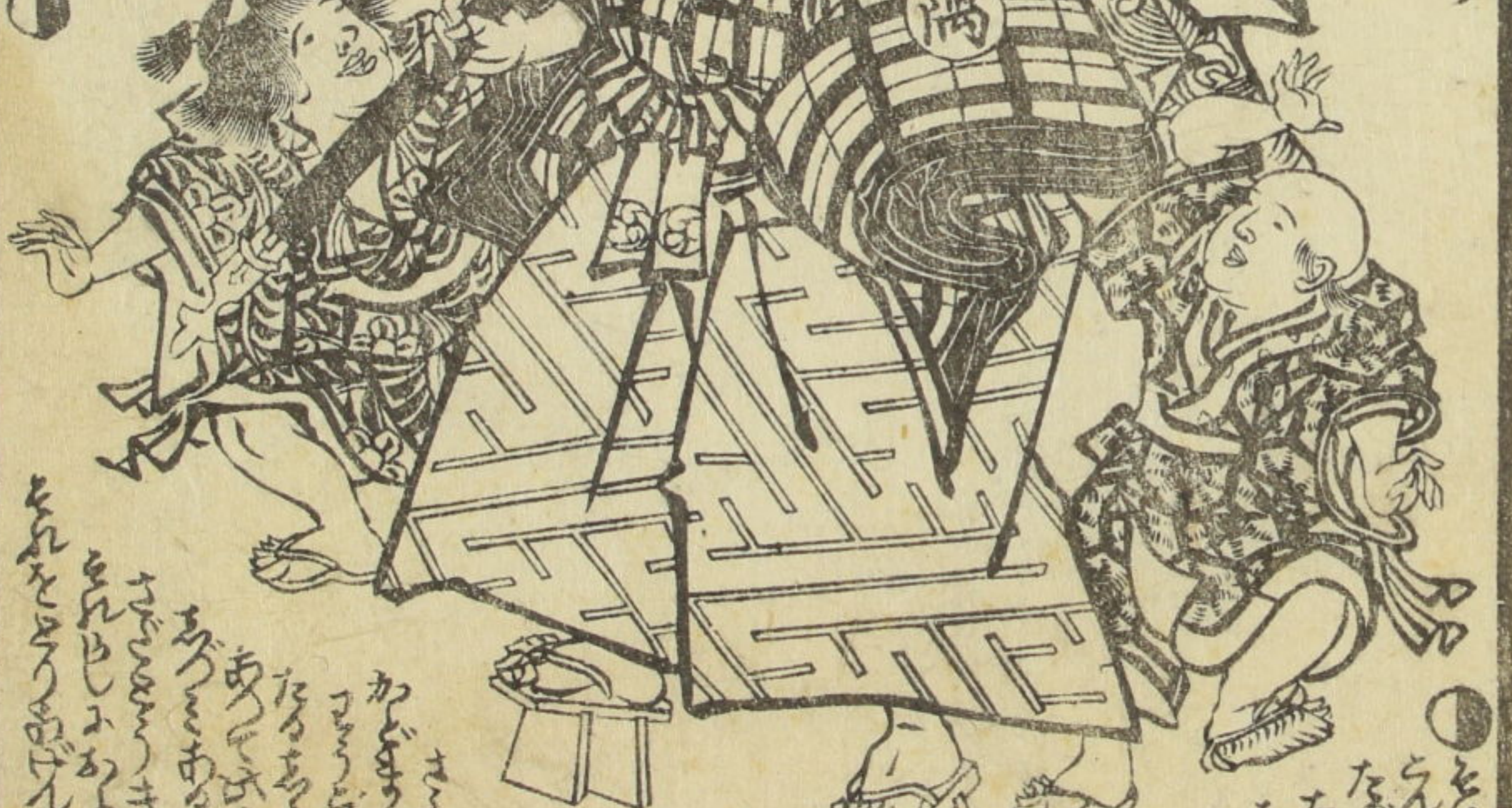
Small vertical text block located at the bottom left of the left page, possibly a signature or a specific title for the illustration.

Handwritten text in a cursive script, likely a translation or commentary on the adjacent page.

Handwritten text in a cursive script, continuing the translation or commentary.

中編下冊

Handwritten text in a cursive script, positioned above the illustration.



Handwritten text in a cursive script, positioned below the illustration.

Handwritten text in the upper section of the right page, arranged in vertical columns. The text is in a cursive style, likely a form of Japanese calligraphy or a specific dialect.



Handwritten text in the lower section of the right page, arranged in vertical columns, continuing the narrative or providing commentary on the illustration.

Handwritten text in the upper section of the left page, arranged in vertical columns.

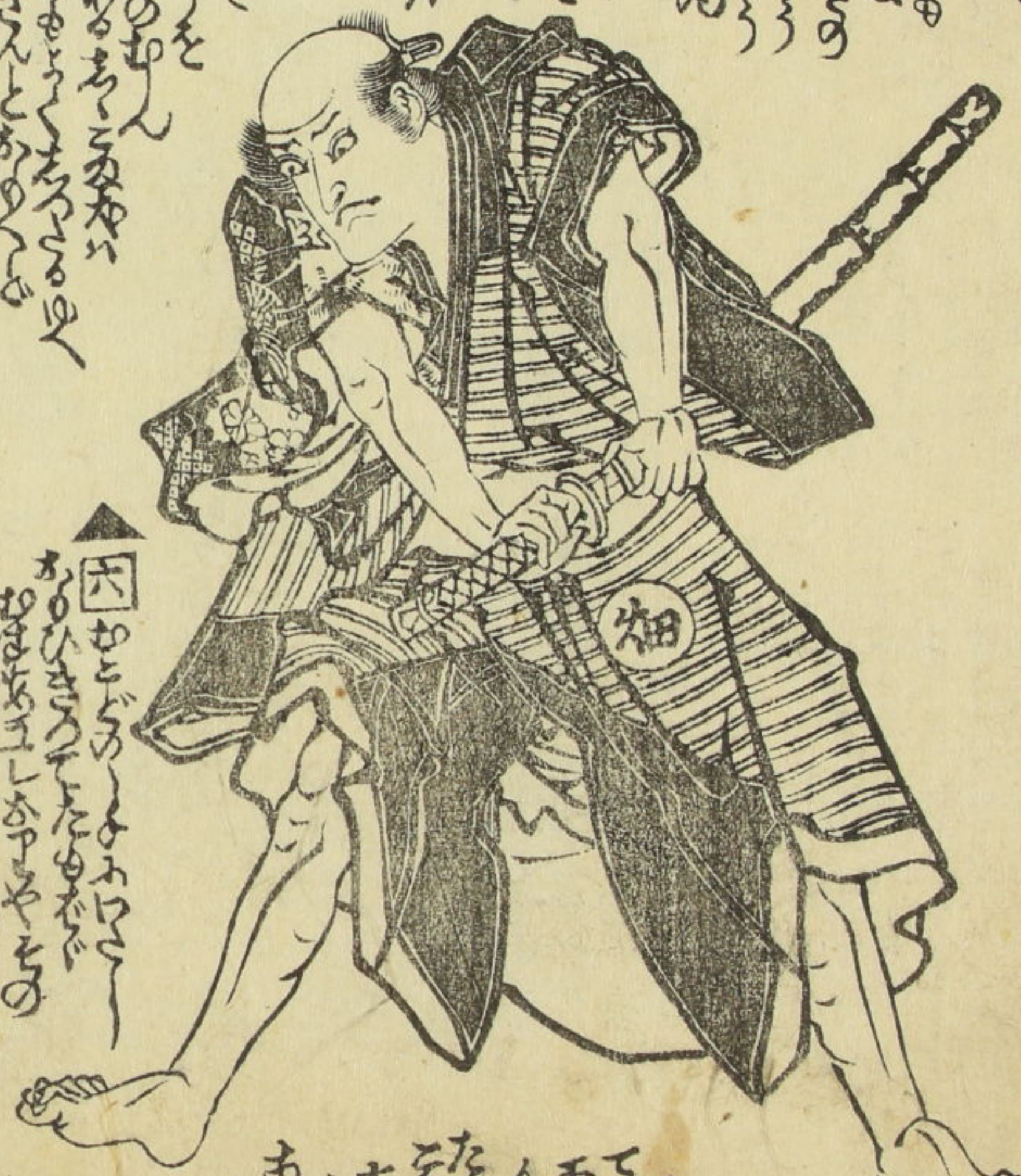


Handwritten text in the middle section of the left page, arranged in vertical columns.

Handwritten text in the lower-middle section of the left page, arranged in vertical columns.

Handwritten text in the lower section of the left page, arranged in vertical columns.

Handwritten text in vertical columns at the top of the right page, likely a preface or introductory text.



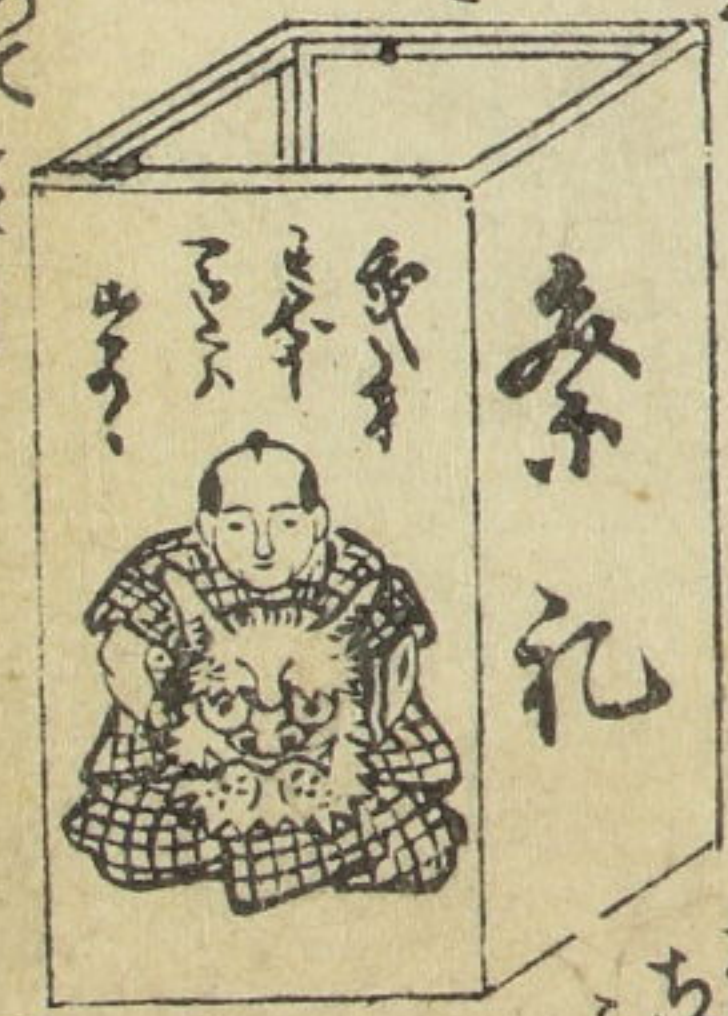
Handwritten text blocks labeled with circled numbers ④ and ⑤, providing commentary on the illustration.

Handwritten text at the bottom of the right page, continuing the commentary or narrative.

Handwritten text in vertical columns at the top of the left page.



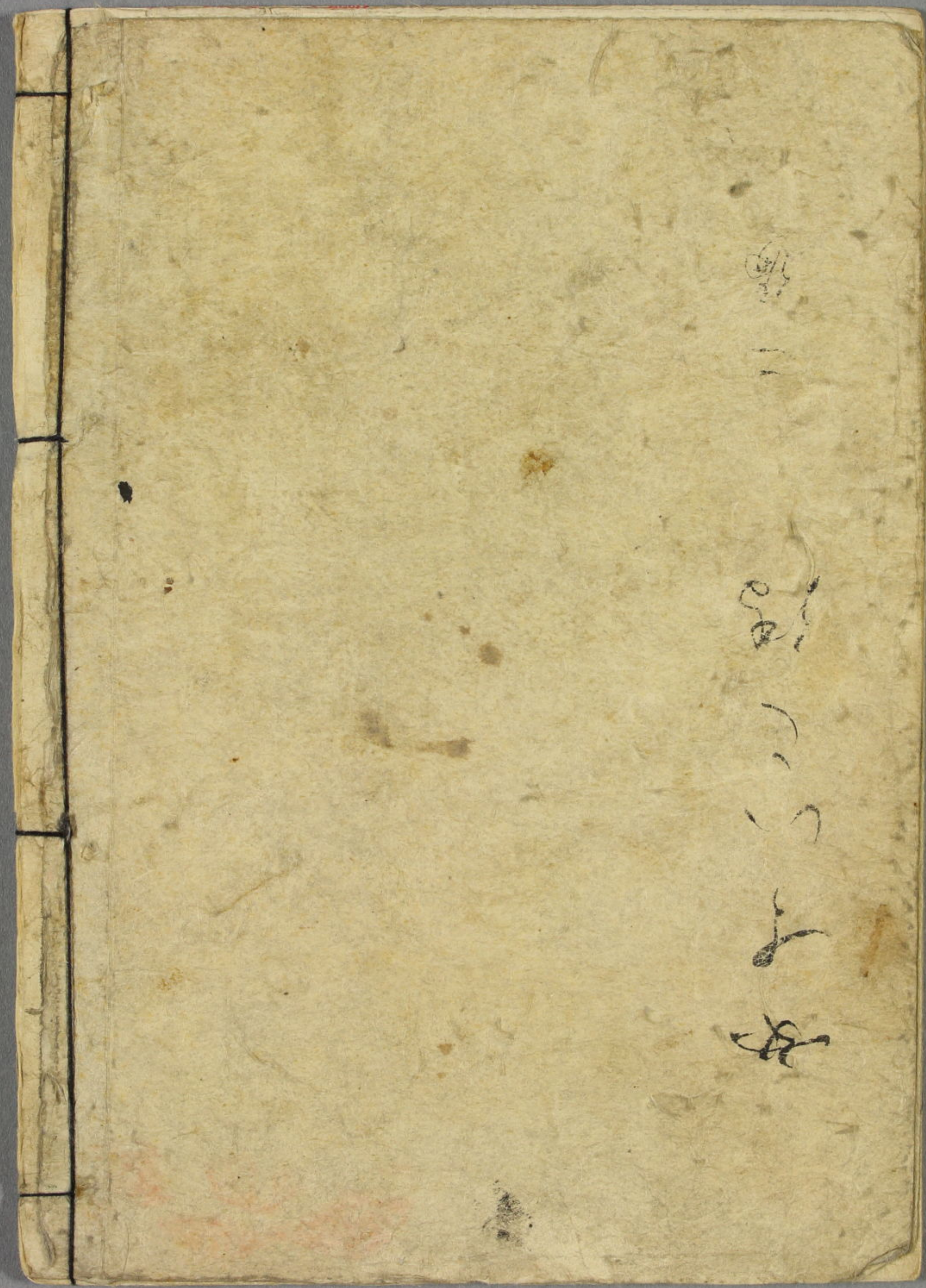
Handwritten text blocks labeled with circled numbers ①, ②, and ③, providing commentary on the illustration.



Handwritten text at the bottom of the left page, including a circled number ④.

豊國画○山東京傳作





好古堂

一

好古堂

一

好古堂

一