

書

馬
琴
作

Kusa: (No. 0
Tanabata.
Book 1.

^ 13
3808





Kusa: (No. 034)
Tanabata.
Book i.

^ 13
3808

Kusa: (No. 034)
Tanabata.
Book i.

牽牛織女願絲竹上編

曲亭馬琴

著

歌川國貞

畫

13
808
卷

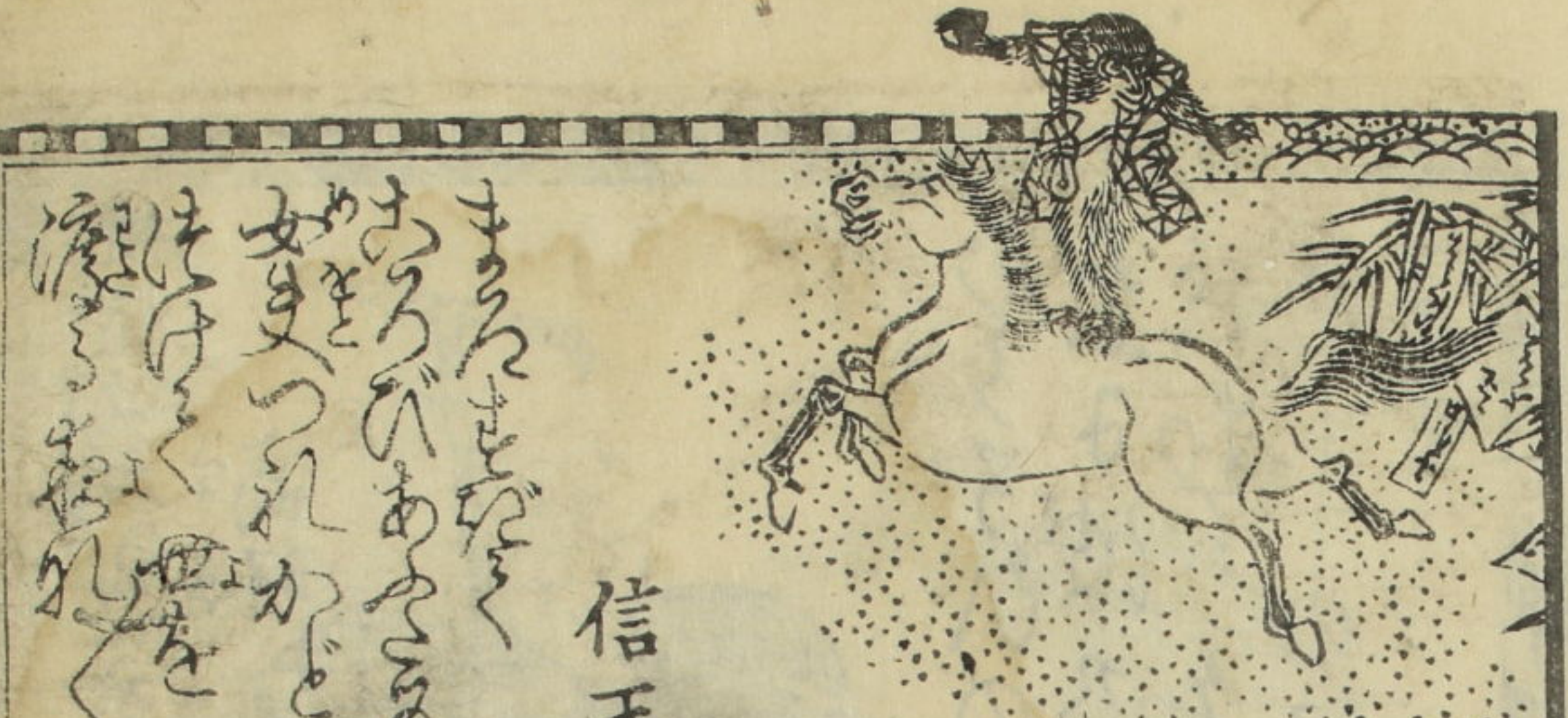
文政十年丁亥
春正月吉日
取全六冊合發
江戸馬喰町貳
町目書林地本
問屋永壽堂
西本陣

みかぬれなりしとく若く散る浪速津に梳くといふの有り親梳の譲と受く
重箱代家富なるまにけ梳のまゝ成知るとして知らざるもの四とせよの故とされ
抱負敷く新し敷くし重の碑みらのまゝで末の舟れと多の松山小猪はく通入海
因果中身の中位井もて腰高のかくを疎ゆ手漁にかけ子四のまゝ
焼物皿のまゝの女房とすし得りて箸ゆもかかれ浮名と流して本膳の善
粗いと世の頼ひけいといふ二方も鈍るゝかえり一極向本はく所勸善業脚
二の膳三乃善悪邪正乃次第と分る献を所席料理の急極腕子魚物
目もぬれぬ盛作も名は天ひの附名も八假名つた思ひは音訓交湯桶と
さつでもくごの筆研みもくろ丸の墨で三六三冊合て六冊時体もるれ世話
たのず有る食言新多の振舞のまゝに誦てと雲時札の大胡を夢れ中寝も
居るも秋らほはほい四溜のあらぬ附打舌成聲も七く模の草紙
頼もまらにぬ

文政十丁亥子孟春新版 馬琴戲述 四

壹





信天翁

まろくせな
あつらひあま
かまつれかど
はけく
はけく



家具
膳

膳
平嫁



愚山人
ひの
何



浪速の
櫛久

あま
あま
あま
あま

傾城
松山



Handwritten Japanese text surrounding the top and right sides of the illustration, including a vertical column on the far right.

Handwritten Japanese text surrounding the bottom and left sides of the illustration, including a vertical column on the far left.



Handwritten Japanese text surrounding the top and right sides of the illustration, including a vertical column on the far right.

Handwritten Japanese text surrounding the bottom and left sides of the illustration, including a vertical column on the far left.

Handwritten text in vertical columns, likely a narrative or commentary, surrounding the illustration on the right page.



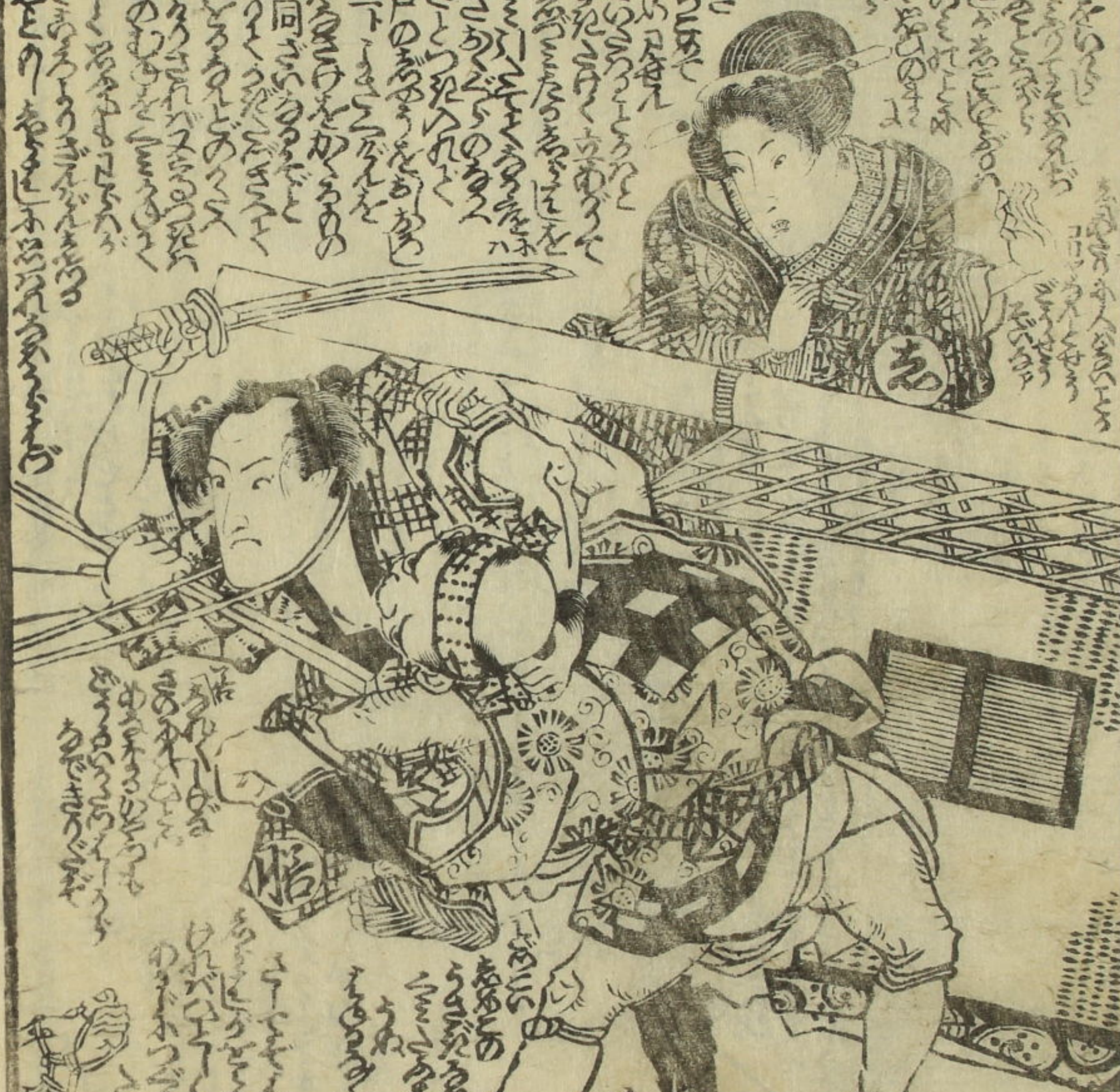
Handwritten text in vertical columns, likely a narrative or commentary, surrounding the illustration on the left page.



五右衛門

五右衛門

Handwritten text in a cursive style, likely a commentary or a list of names, located at the top of the right page. The text is arranged in several vertical columns.



Handwritten text in a cursive style, likely a commentary or a list of names, located at the bottom of the right page. The text is arranged in several vertical columns.

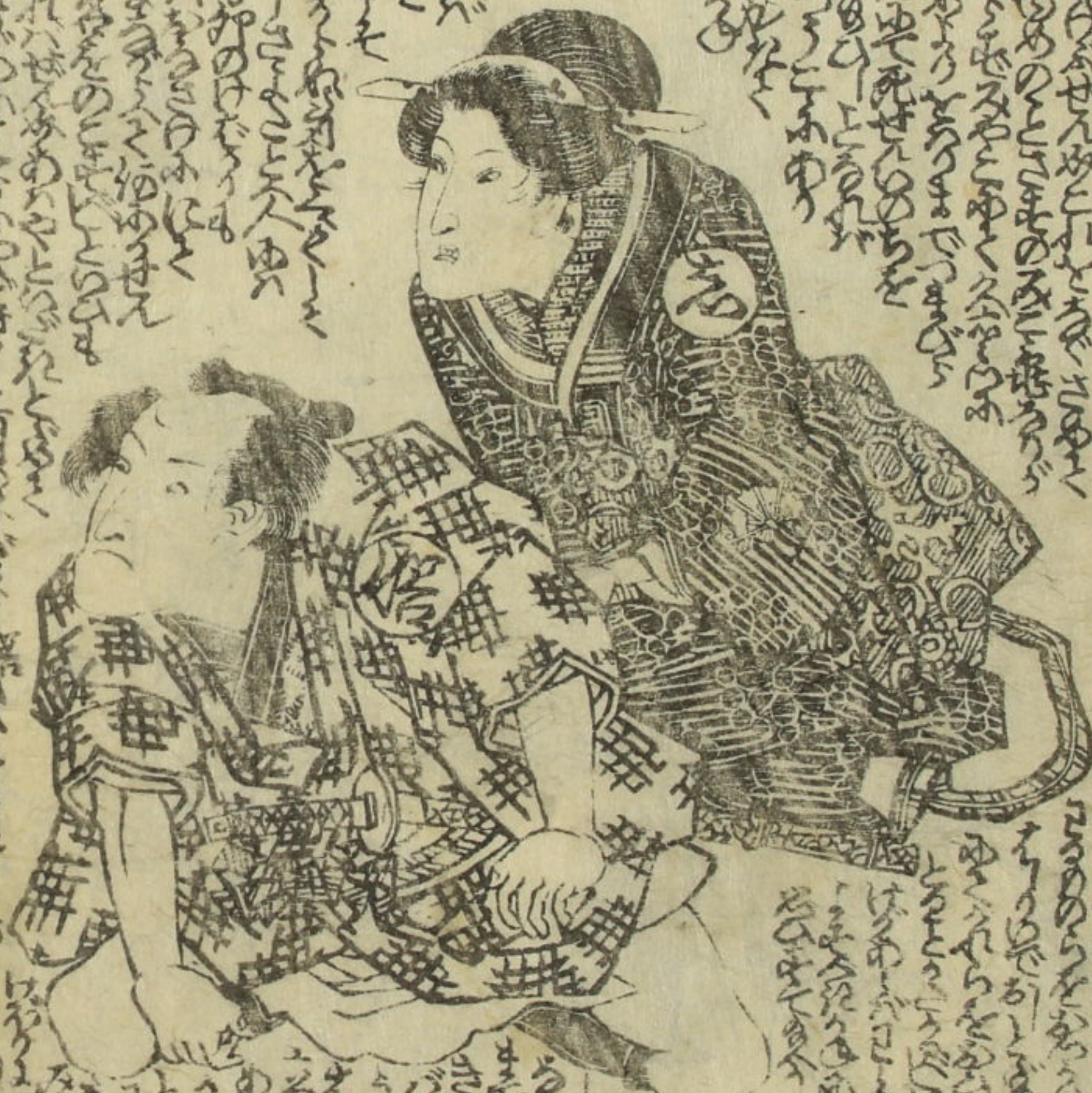
Handwritten text in a cursive style, likely a commentary or a list of names, located at the top of the left page. The text is arranged in several vertical columns.



Handwritten text in a cursive style, likely a commentary or a list of names, located at the bottom of the left page. The text is arranged in several vertical columns.

示行

Handwritten text in a cursive script, likely a form of shorthand or a specific dialect, filling the top and right portions of the page.



Handwritten text in a cursive script, likely a form of shorthand or a specific dialect, filling the top and right portions of the page.



國貞画

馬琴作

福乃
中編



孟春 西村永壽堂版

曲亭馬琴戲編

全六局中



牽牛織女

願
竹
絲

五渡亭國貞画

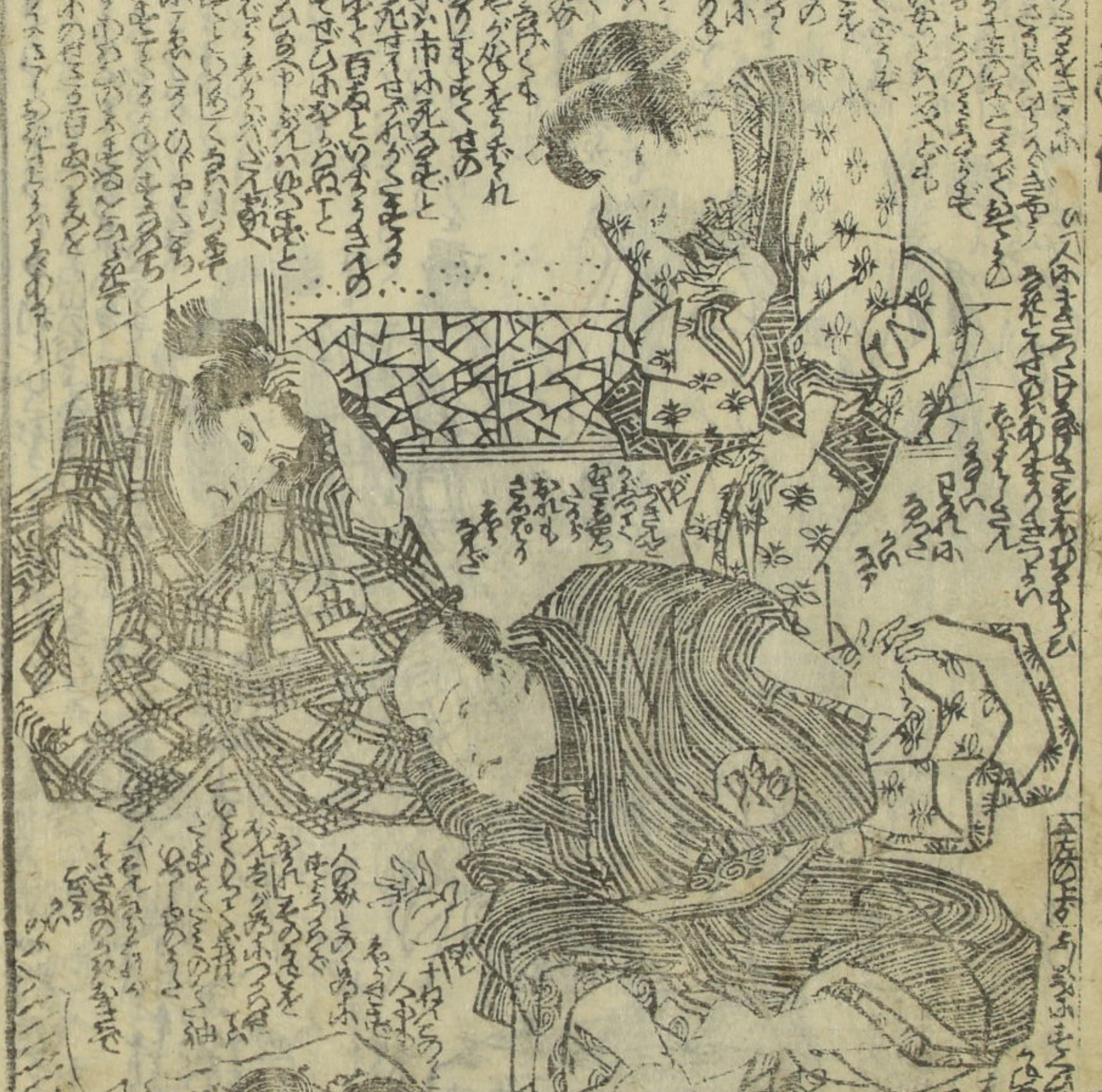
西村屋新版



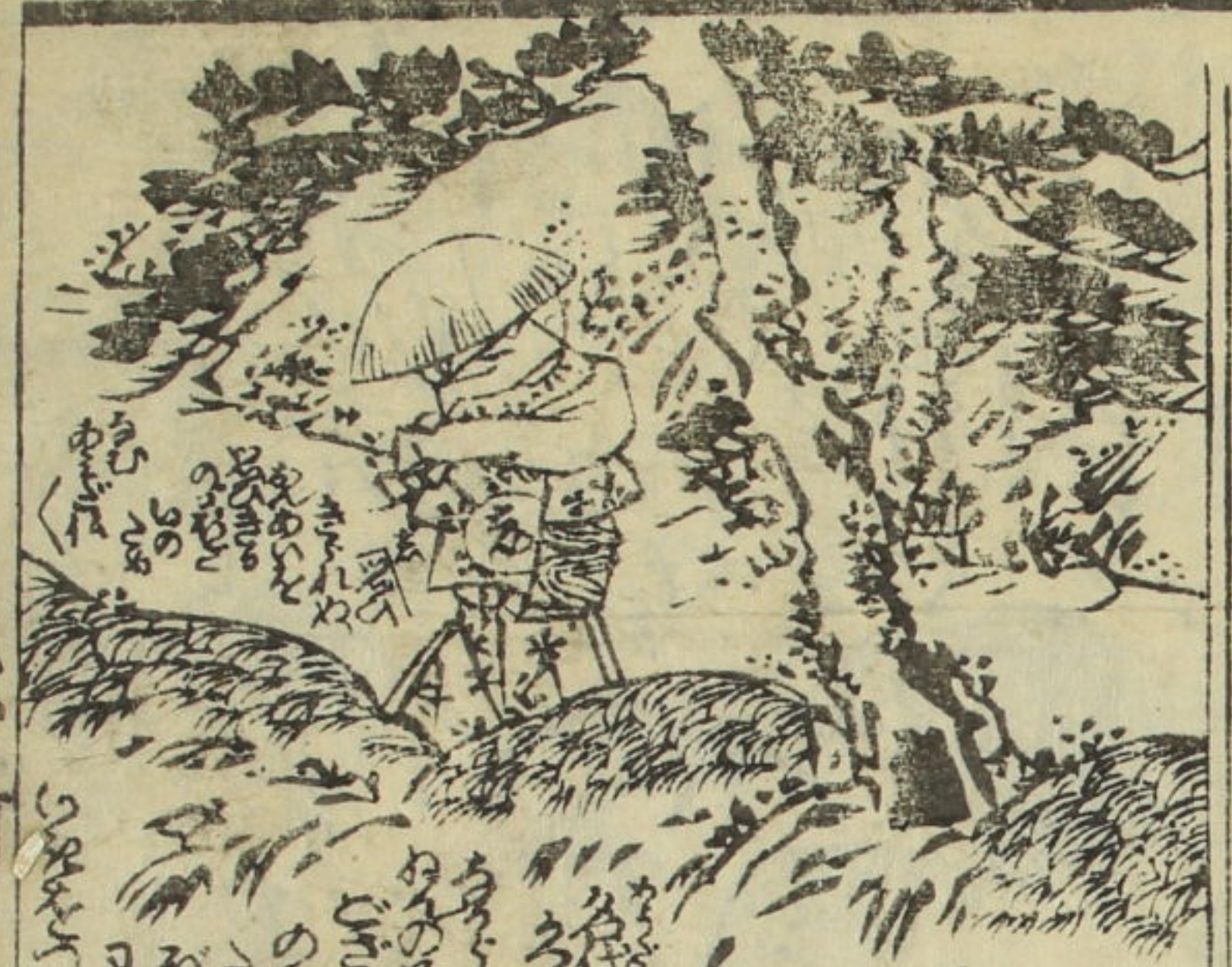
②



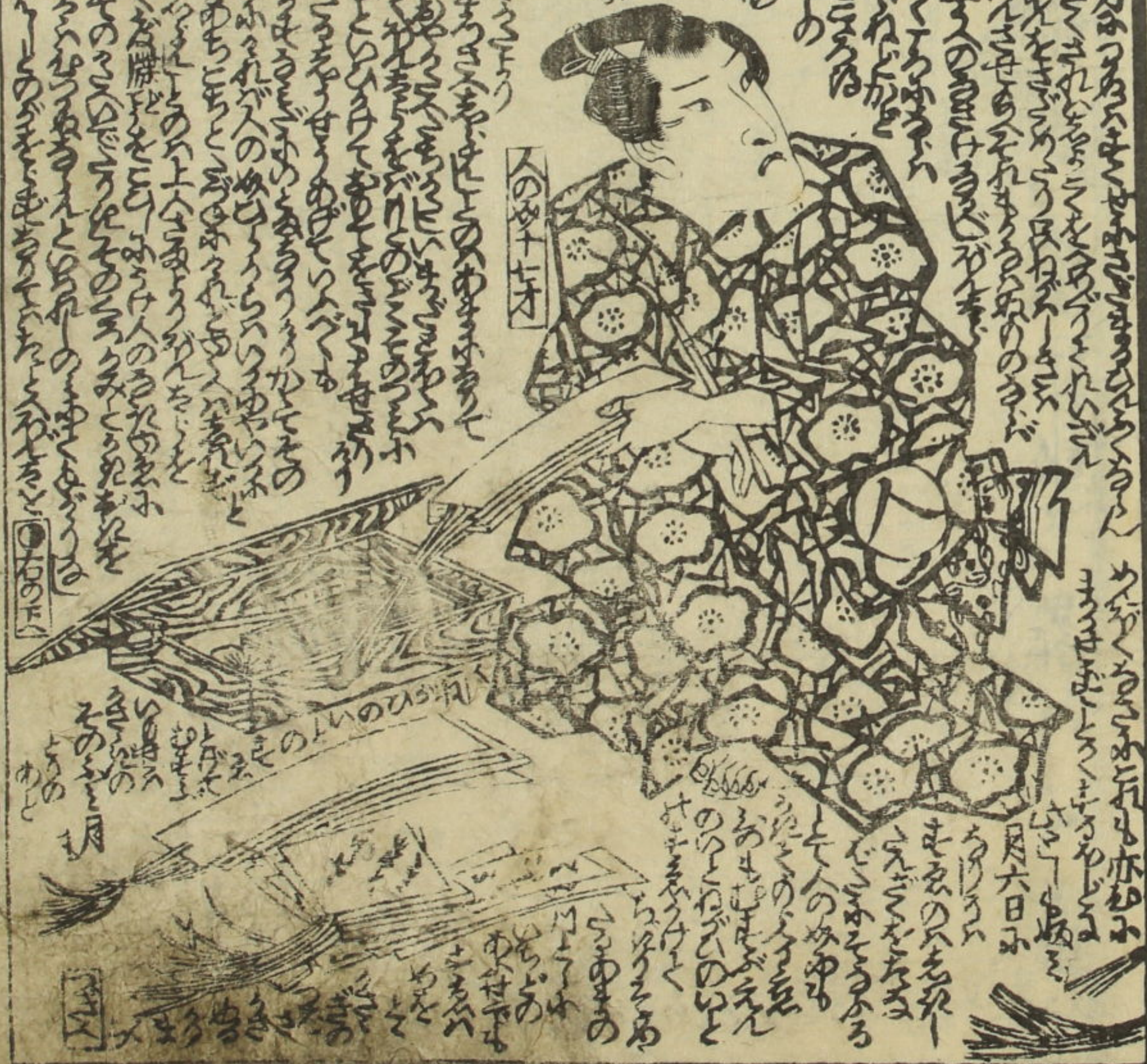
Vertical columns of handwritten Japanese text, likely a play script, surrounding the illustration. The text is written in a cursive style and includes stage directions and dialogue.



Vertical columns of handwritten Japanese text, likely a play script, surrounding the illustration. The text is written in a cursive style and includes stage directions and dialogue.



Handwritten text in a vertical column, likely a commentary or a list of items, written in a cursive style. The text is densely packed and covers most of the page area.



Handwritten text located to the left of the illustration, possibly a label or a small note.

Handwritten text located at the bottom left of the page, possibly a page number or a date.

Handwritten text in a vertical column, continuing the commentary or list from the previous page. The text is densely packed and covers most of the page area.



Handwritten text located to the left of the illustration, possibly a label or a small note.

Handwritten text located at the bottom left of the page, possibly a page number or a date.

Handwritten text in vertical columns, likely a commentary or a list of items, surrounding the illustration on the right page.



Handwritten text in vertical columns, likely a commentary or a list of items, surrounding the illustration on the left page.



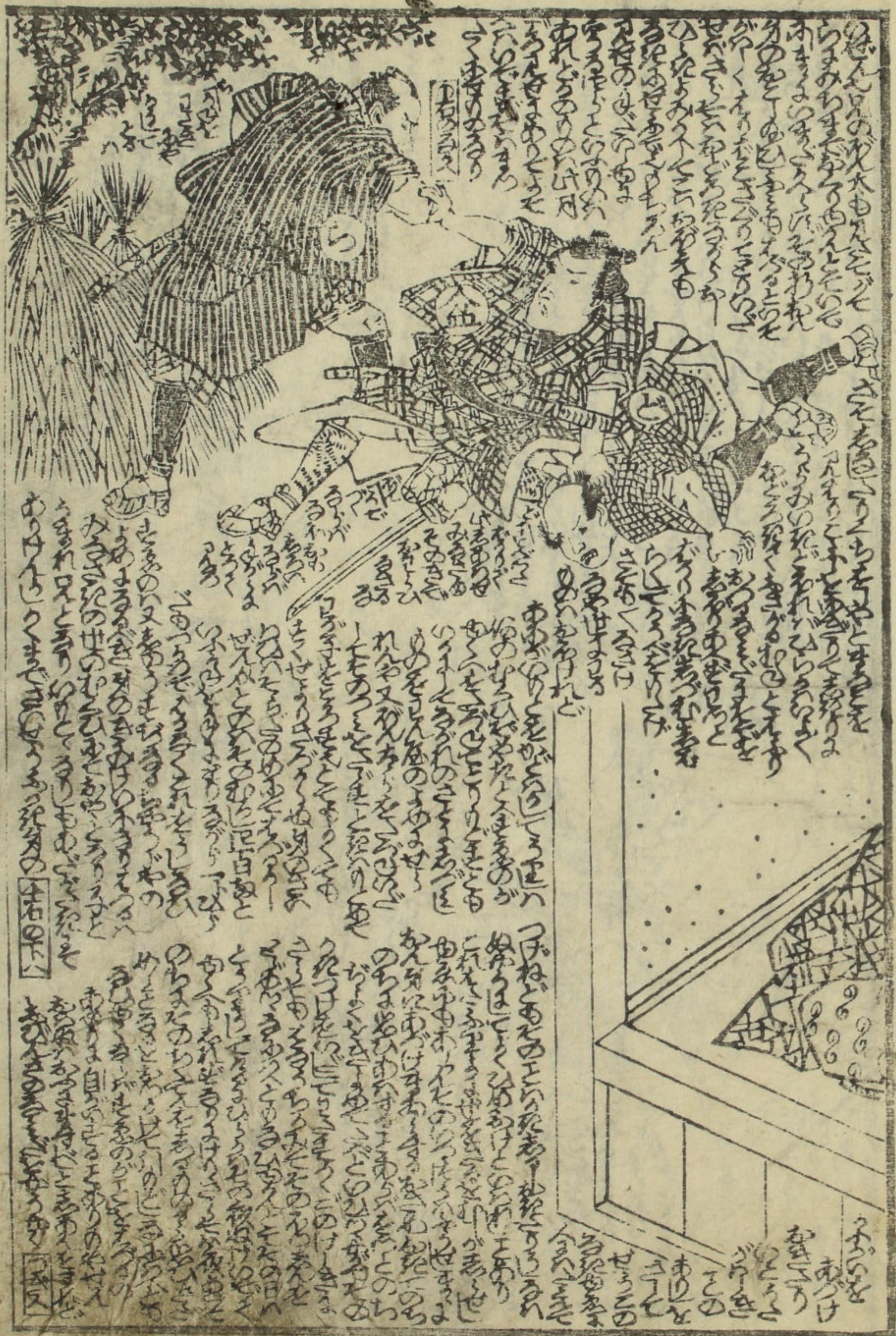


六

七



八





Handwritten text in a cursive script, likely a form of shorthand or a specific dialect, surrounding a central illustration. The text is arranged in columns on both sides of the drawing.

A detailed illustration of a seated figure, possibly a deity or scholar, wearing a patterned robe and holding a staff or instrument. The figure is depicted in a three-quarter view, facing right. The robe features a complex geometric pattern. The figure's hands are positioned as if holding a long object, possibly a staff or a musical instrument. The background is filled with dense, handwritten text in a cursive script, likely a form of shorthand or a specific dialect. The text is arranged in columns on both sides of the drawing. There are small square markers or symbols interspersed within the text.

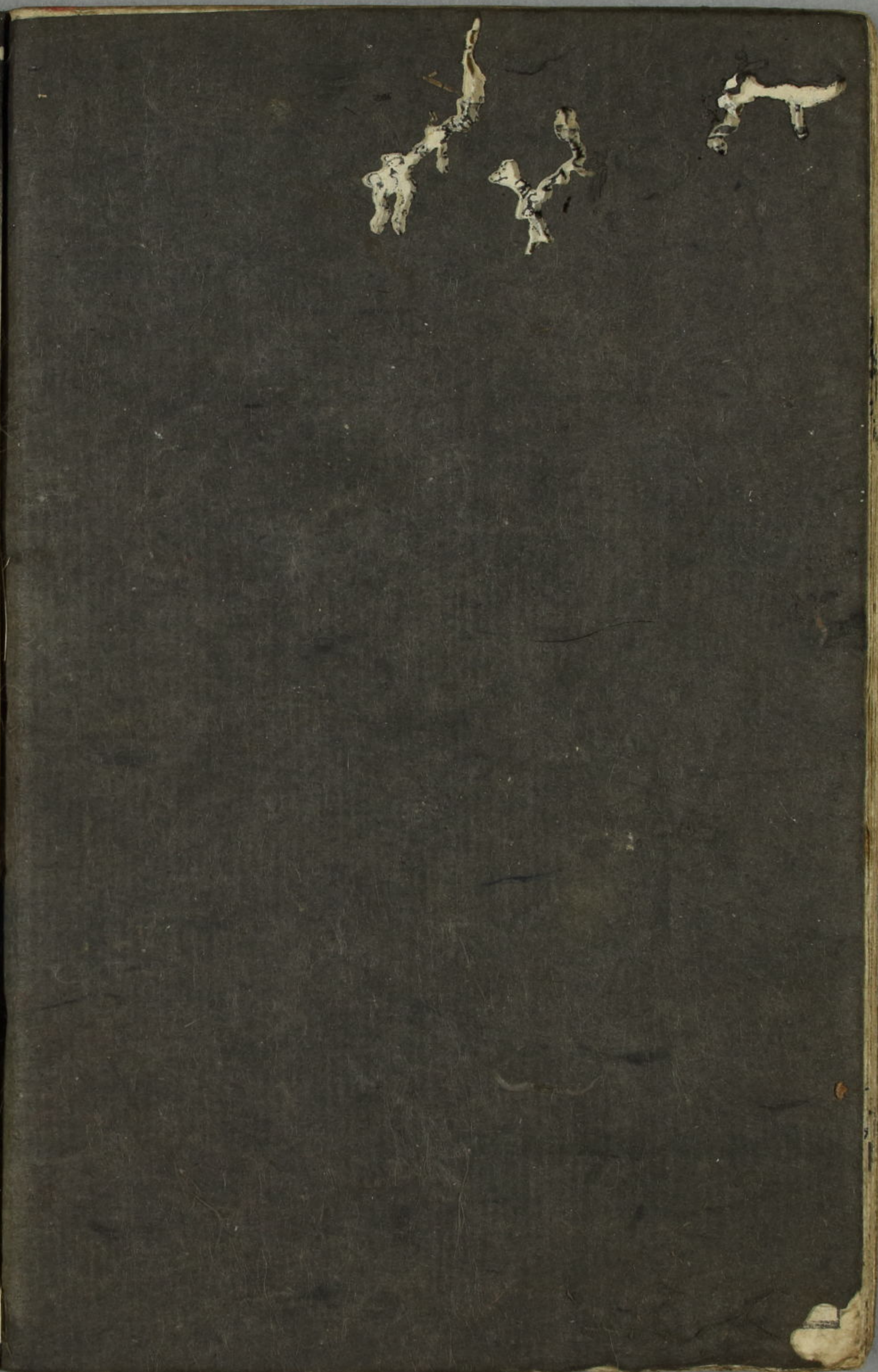


國貞画

以
下編

西堂永町馬喰

身合六全孟春丁亥



Handwritten text in vertical columns, likely a commentary or a list of items, surrounding the illustration.



白文

Handwritten text in vertical columns, likely a commentary or a list of items, surrounding the illustration.



白文

Handwritten text in a cursive script, likely a Japanese calligraphic style, covering the top and bottom portions of the page. The text is arranged in vertical columns, with some characters appearing to be in a different script or dialect. The ink is dark and the paper shows signs of age and wear.



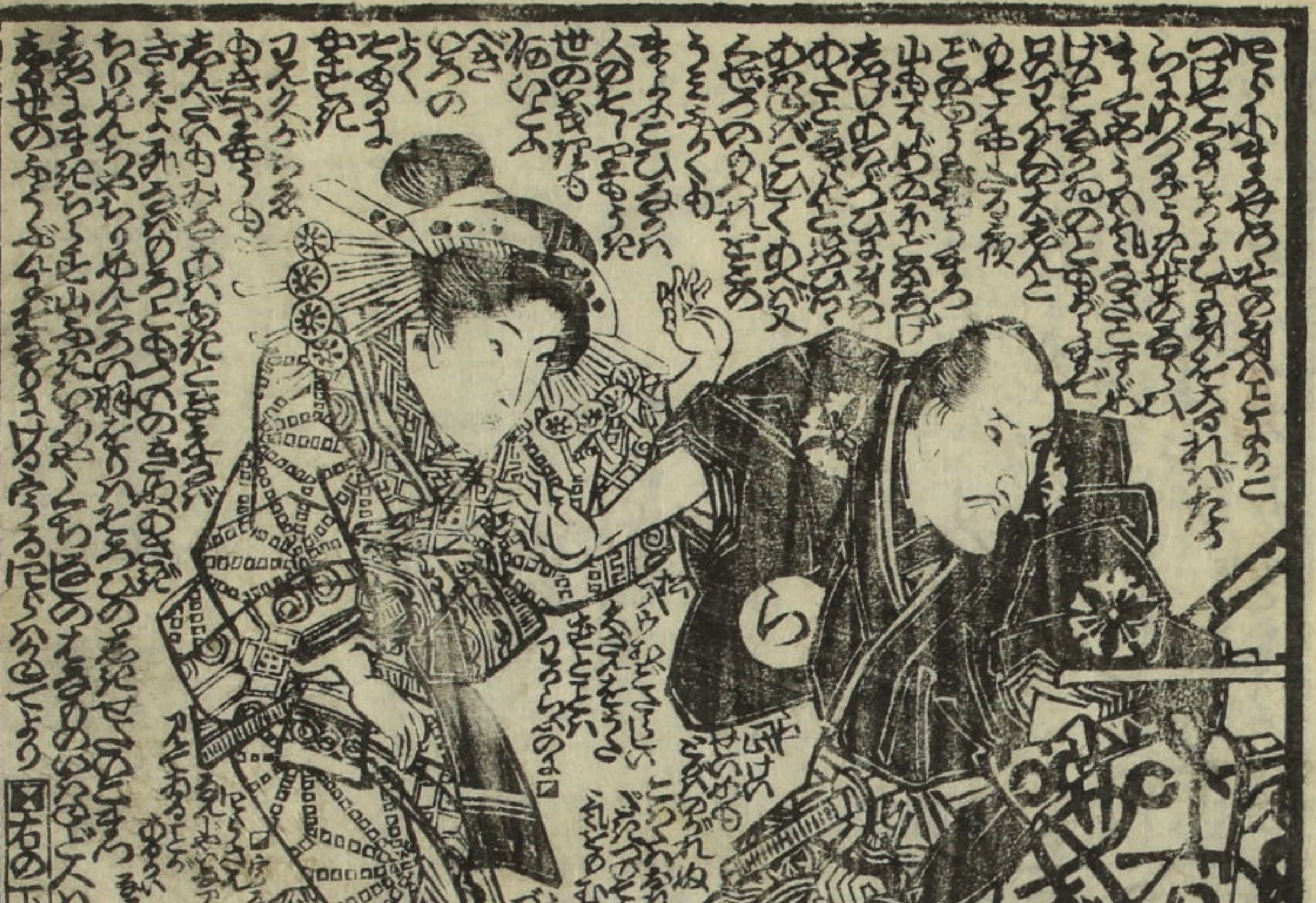
Handwritten text in a cursive script, likely a Japanese calligraphic style, covering the top and bottom portions of the page. The text is arranged in vertical columns, with some characters appearing to be in a different script or dialect. The ink is dark and the paper shows signs of age and wear.



Handwritten text in a vertical column on the right side of the page, likely a commentary or description of the scene.



Handwritten text in a vertical column on the left side of the page, likely a commentary or description of the scene.





Vertical columns of handwritten Japanese text, likely a narrative or commentary, surrounding the central illustration.



Vertical columns of handwritten Japanese text, continuing the narrative or commentary from the left page.





Handwritten text in a medieval script, likely Latin or a related language, filling the upper and lower portions of the page. The text is arranged in dense columns, with some lines appearing to be part of a larger narrative or list.



Handwritten text in a medieval script, similar to the left page, filling the upper and lower portions of the page. The text is arranged in dense columns, with some lines appearing to be part of a larger narrative or list.







