



柳水亭種清綴  
貞重

初編下

^13  
3798  
2

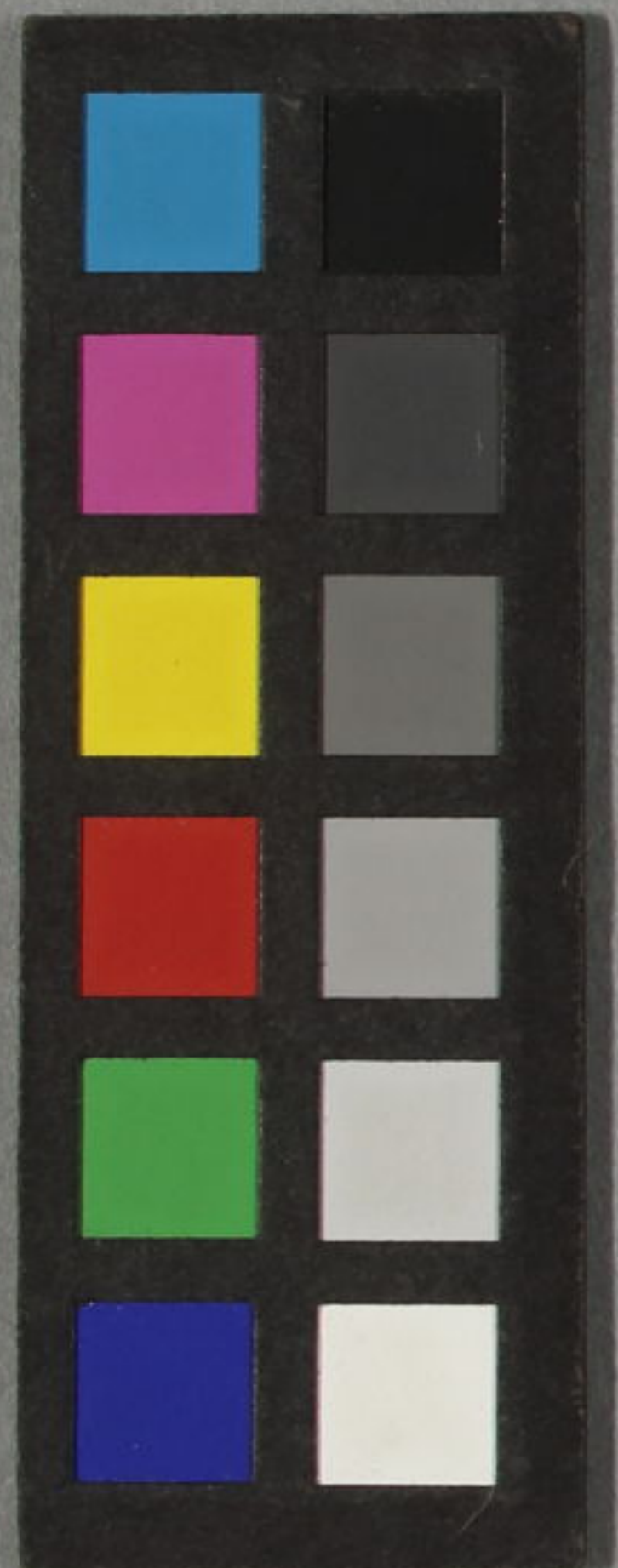
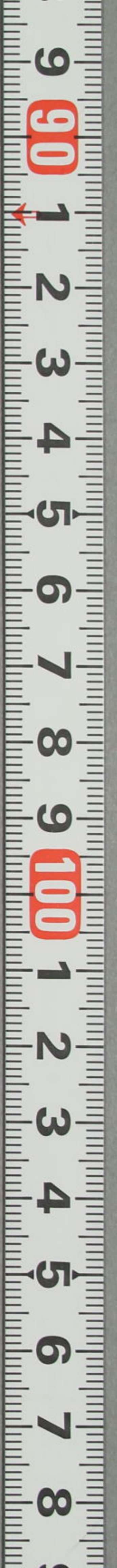


初編上

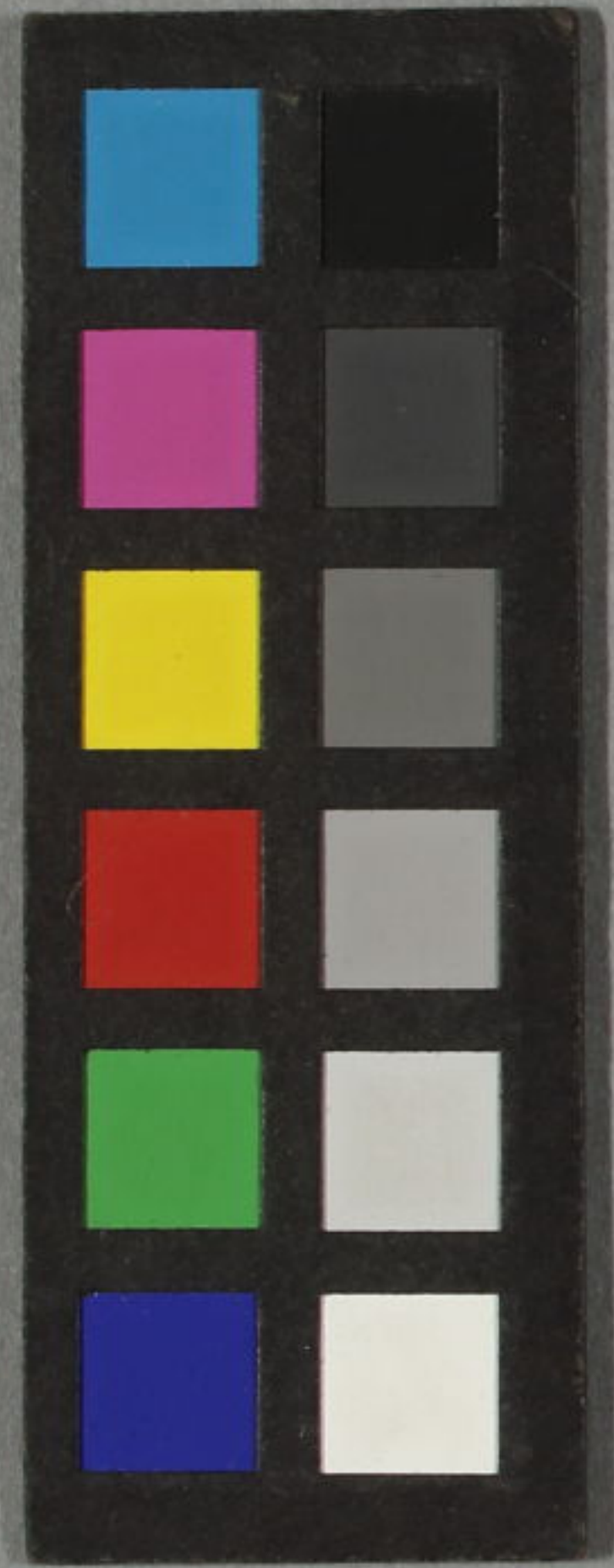
葛吉祥



^13  
3798  
1







初編上

葛吉祥

^13  
3798  
1





門 へ13  
號 77918  
卷

# 江戸櫻

## 清水清玄

初編上

梅水亭種清櫻  
梅蝶樓國貞畫

紅英堂封梅

梅水の瀑布より降りて川白海をさく男女を  
蛇びむるの毒味ありまの清玄を碎るあまきり



六小信をる胸を喰死買り強敵を揚す  
路麴な小邊とたの櫻子さたる尺八あふ  
を平信以共暴革の黒糸組子去年  
を車をあらぶる家の柳も迎春を鞠藝を  
強きとらど顔赤き極みあを何故一夜

あつ穢らぬぞと中摺の老翁存るが  
糟々々々々々々々々々々々々々々々



口 工 門 女 刀

梅水亭種





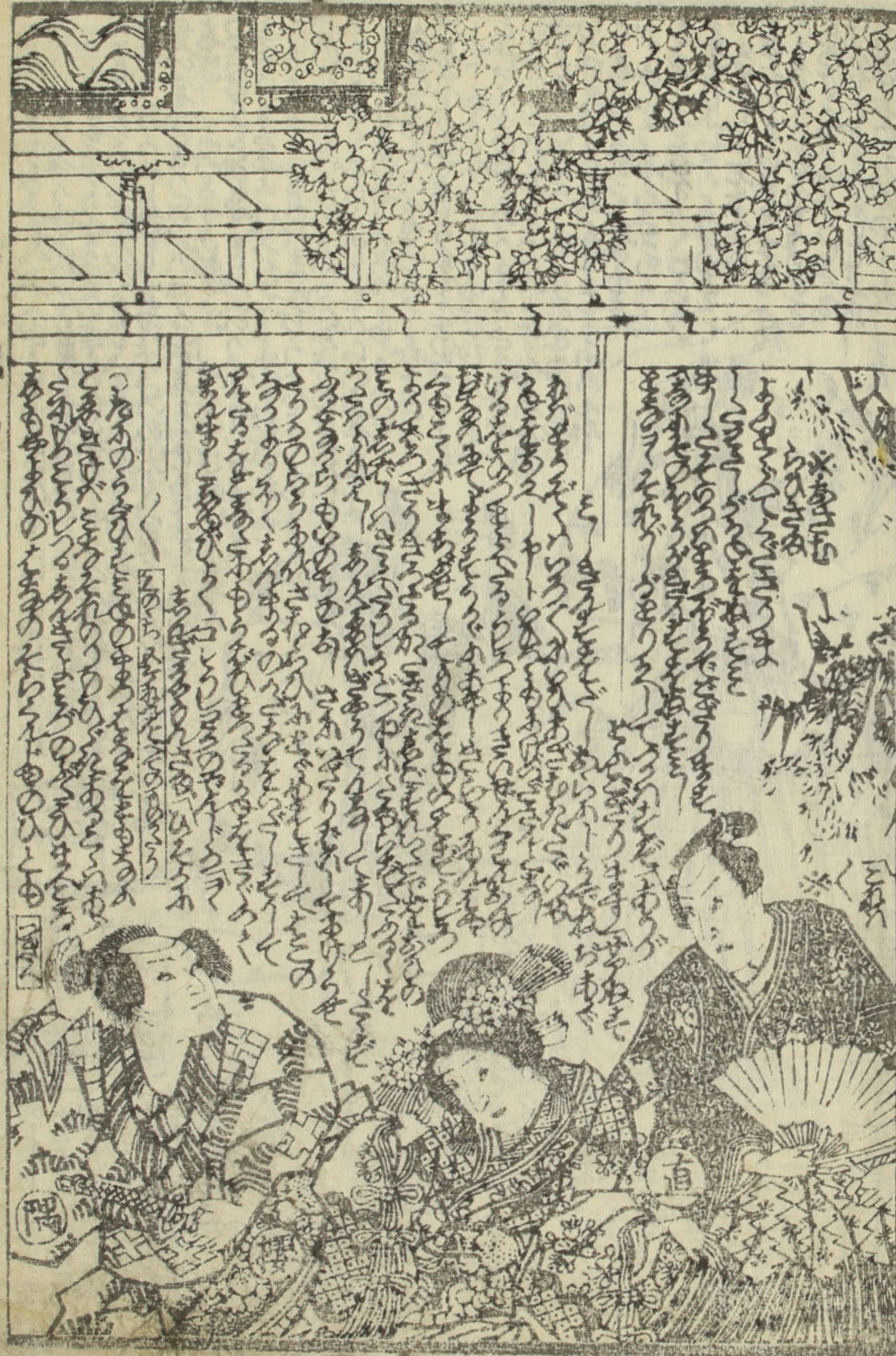












江戸橋本

見





五五 髪刀



六九 持

五













上 女 刃



上 女 本

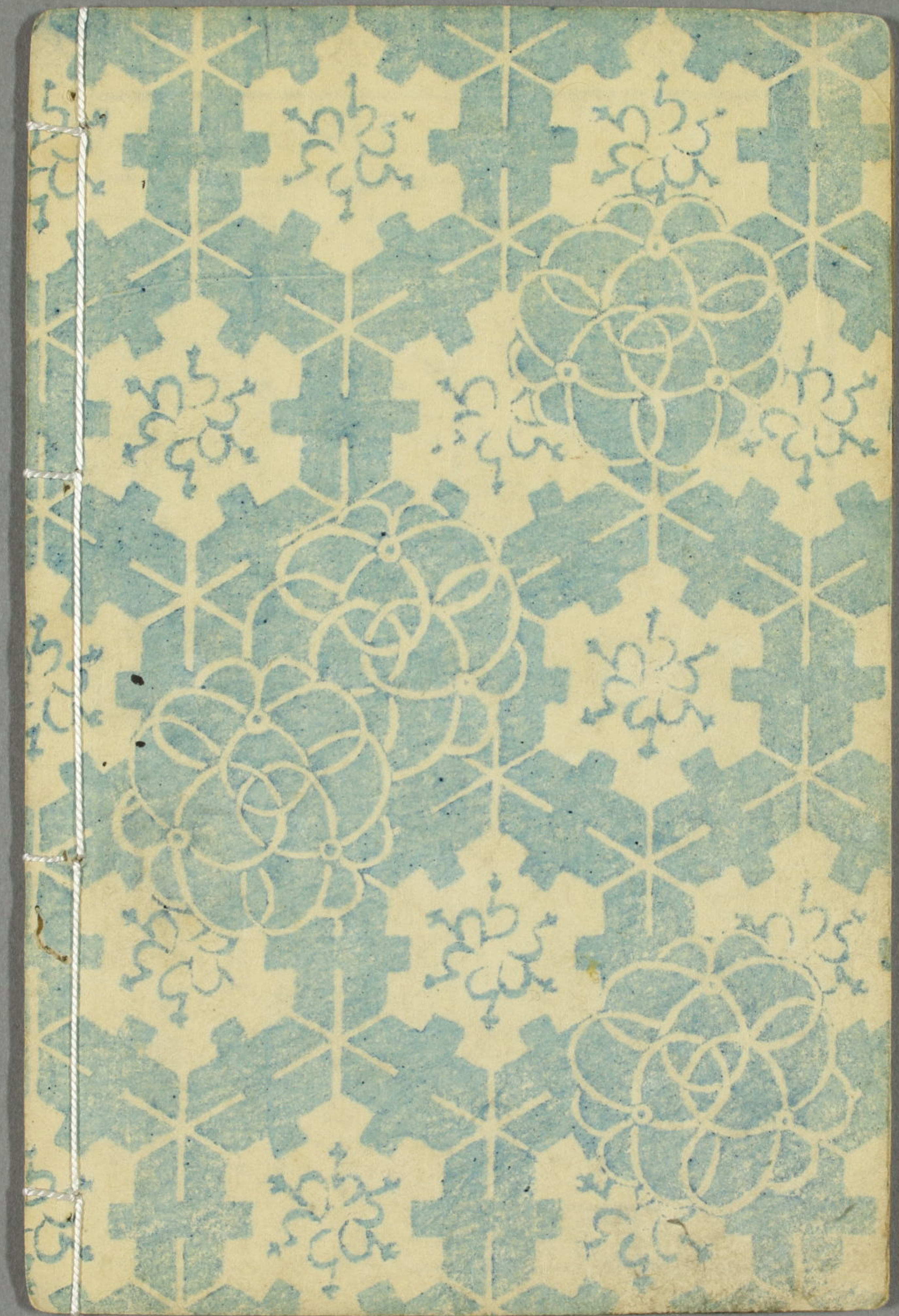
















柳水亭種清綴  
國貞画

初編下

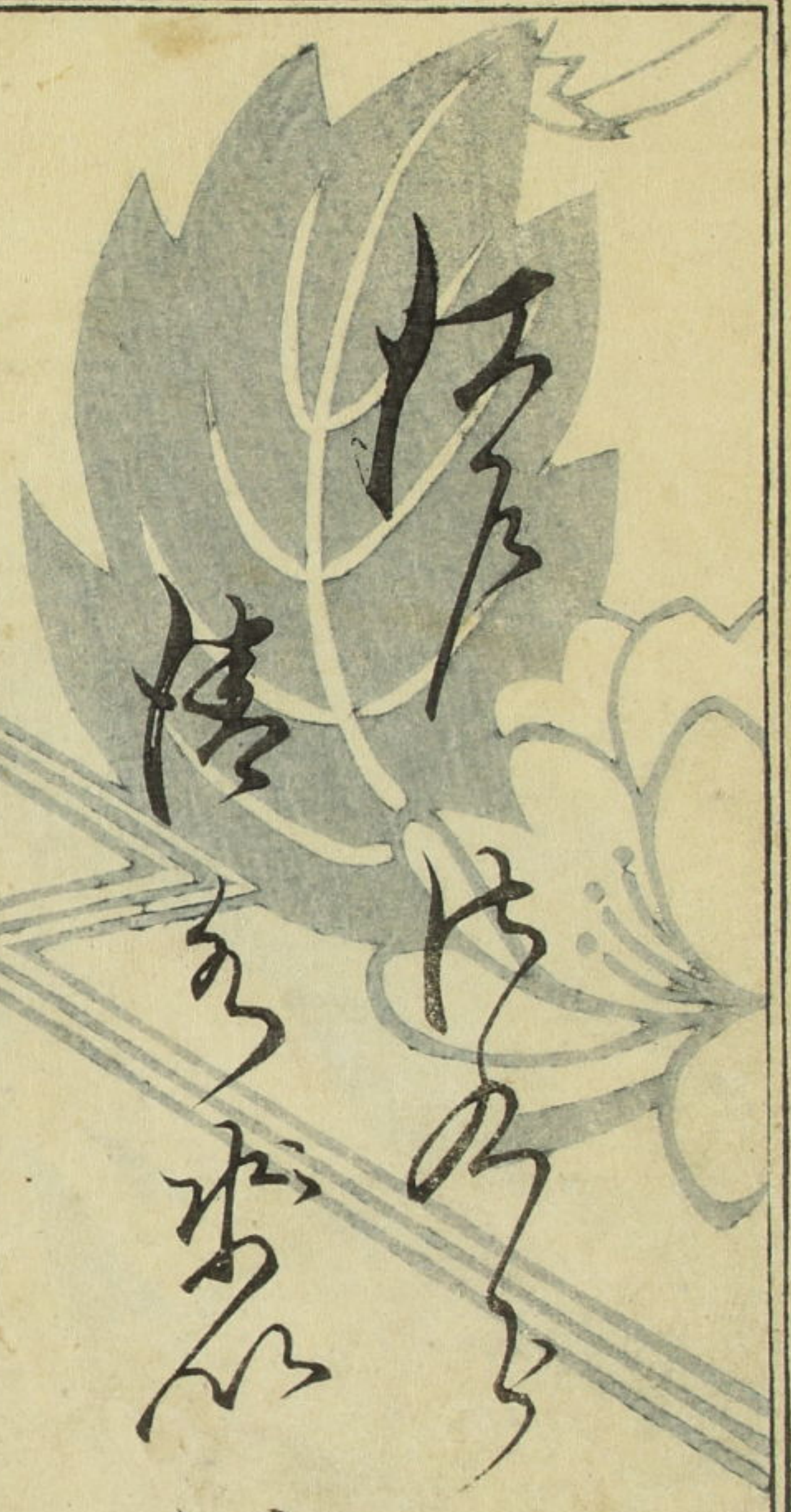
^13  
3798  
2







Vertical columns of handwritten Japanese text (kuzushiji) surrounding the illustration, providing a narrative or commentary on the scene.



Large vertical calligraphic characters in the center of the page, likely the title or a key phrase.

柳中より流るる

國はごさるのり

紅茶をせん

初編下



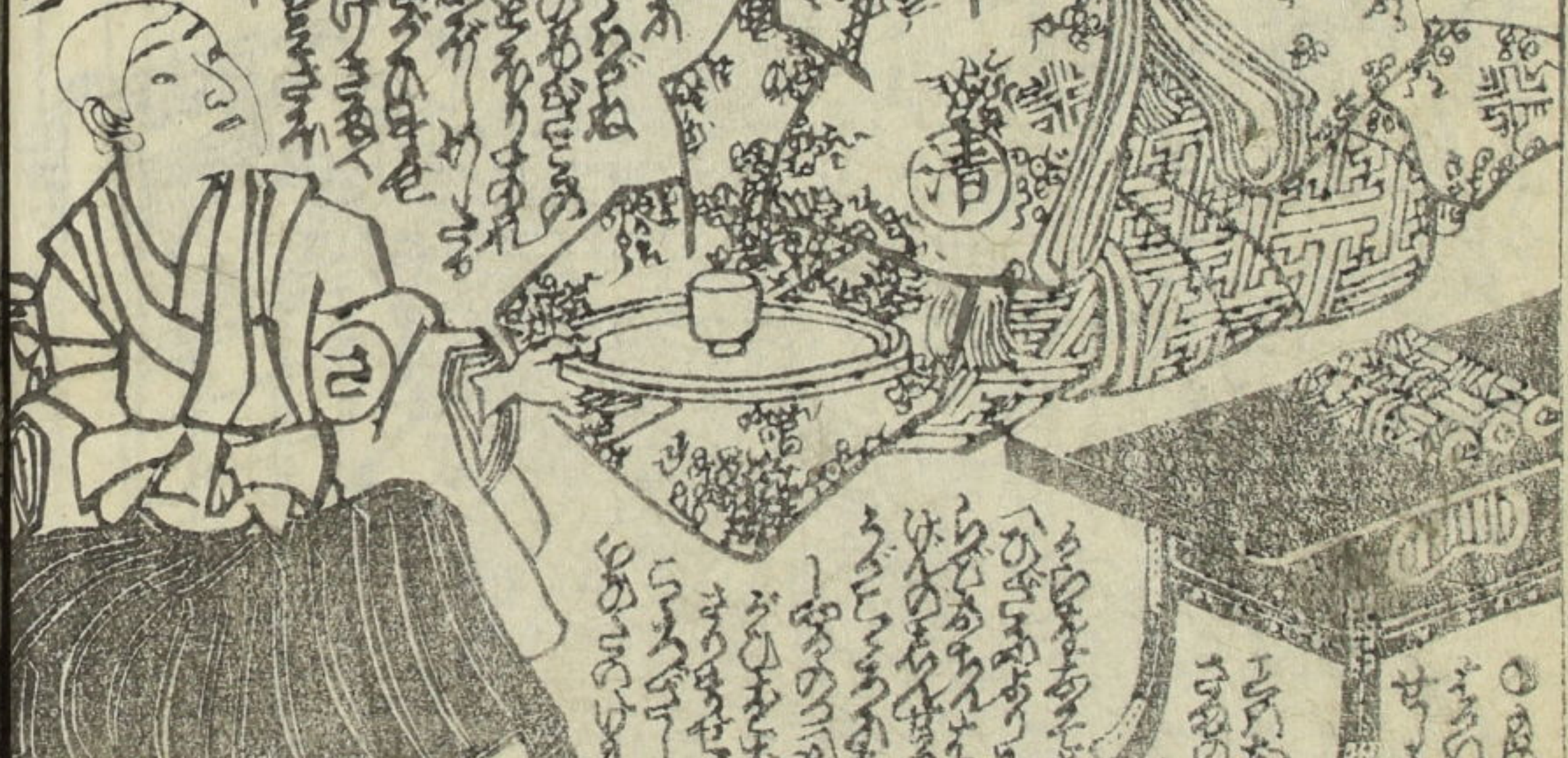








Handwritten text in a cursive script, likely a form of Japanese calligraphy, located at the top of the right page.



Handwritten text in a cursive script, located at the bottom of the right page.

Handwritten text in a cursive script, located at the top of the left page.



Handwritten text in a cursive script, located at the bottom of the left page.

























工 貝 刀

二



江 丹 柳 木

丹 丹







