



狐妖

土

天保三辰新板

~ 13
3771
1



氏



氏





上總久未孫

勝實

後藤重

紙屋

治兵衛

衛

氏名



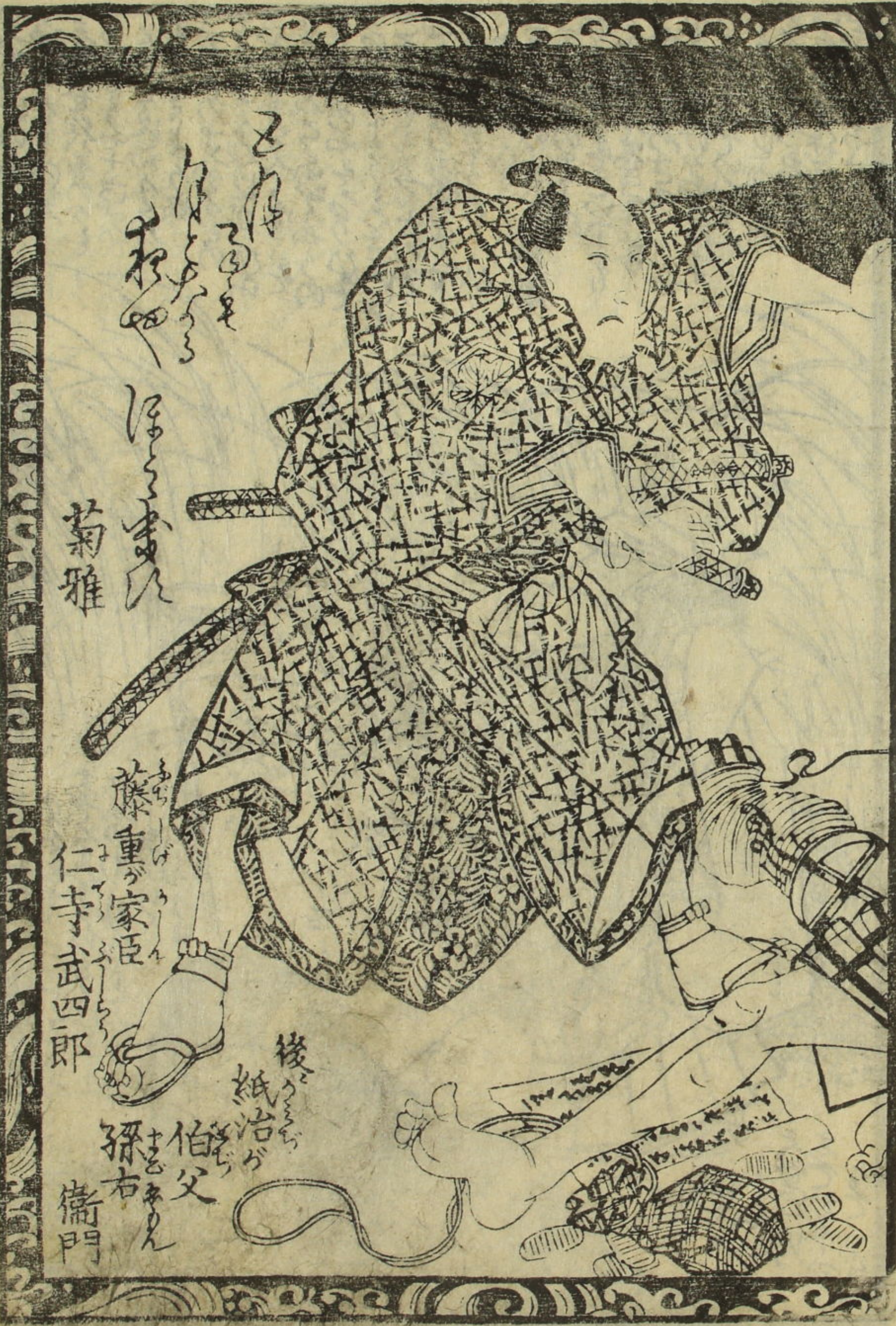
三浦久未孫

泰世娘

落葉

後藝者小春

氏名





Handwritten Japanese text in vertical columns, likely a narrative or commentary related to the scene above.

Handwritten Japanese text in vertical columns, continuing the narrative or commentary from the scene above.



Handwritten Japanese text in vertical columns, likely a narrative or commentary related to the scene above.

Handwritten Japanese text in vertical columns, continuing the narrative or commentary from the scene above.



Handwritten text in a cursive script, likely a transcription of a speech or a list of items, located at the top of the right page.



Handwritten text in a cursive script, located at the bottom of the right page, below the illustration.

Handwritten text in a cursive script, located at the top of the left page.



Handwritten text in a cursive script, located at the bottom of the left page, below the illustration.

江戸料理通 八百善主人著 初編ヨリ四編ニ至ルニ料理の精微の秘の



御江戸繪圖 奉書一枚半 比翼紋意氣地競 國画 全三冊

江戸料理通

八百善主人著 初編ヨリ四編ニ至ルニ料理の精微の秘の

料理早指南

初編ヨリ四編ニ至ルニ料理の精微の秘の

插花早指南

初編一冊

日本名所繪

鐵形蕙春筆 唐紙一枚摺

比翼紋意氣地競

國画 全三冊

和漢年代記

西内二枚 西内二枚 西内二枚

奉書

御江戸繪圖

年号萬歲曆

西内二枚 西内二枚 西内二枚

奉書

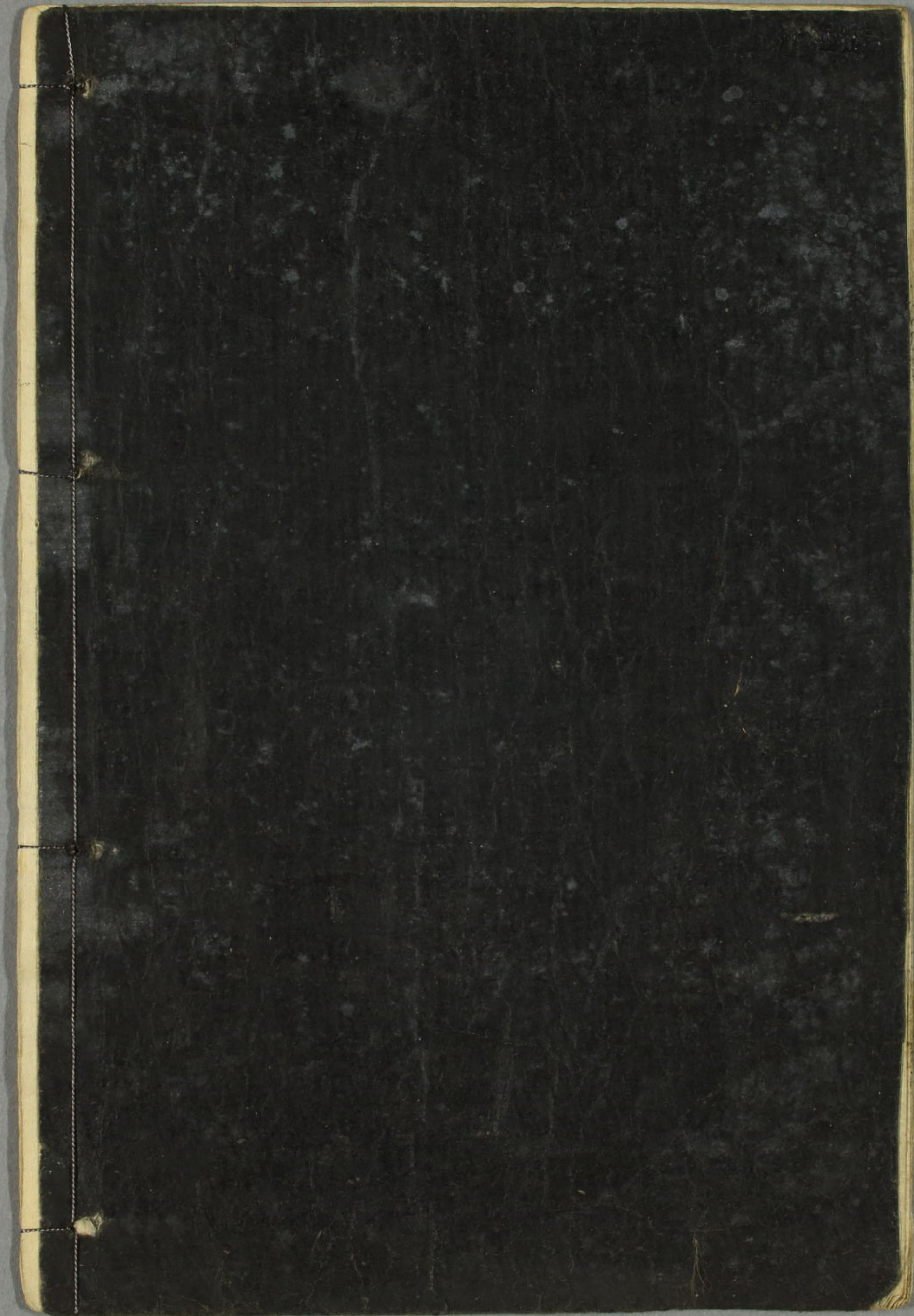
御江戸繪圖

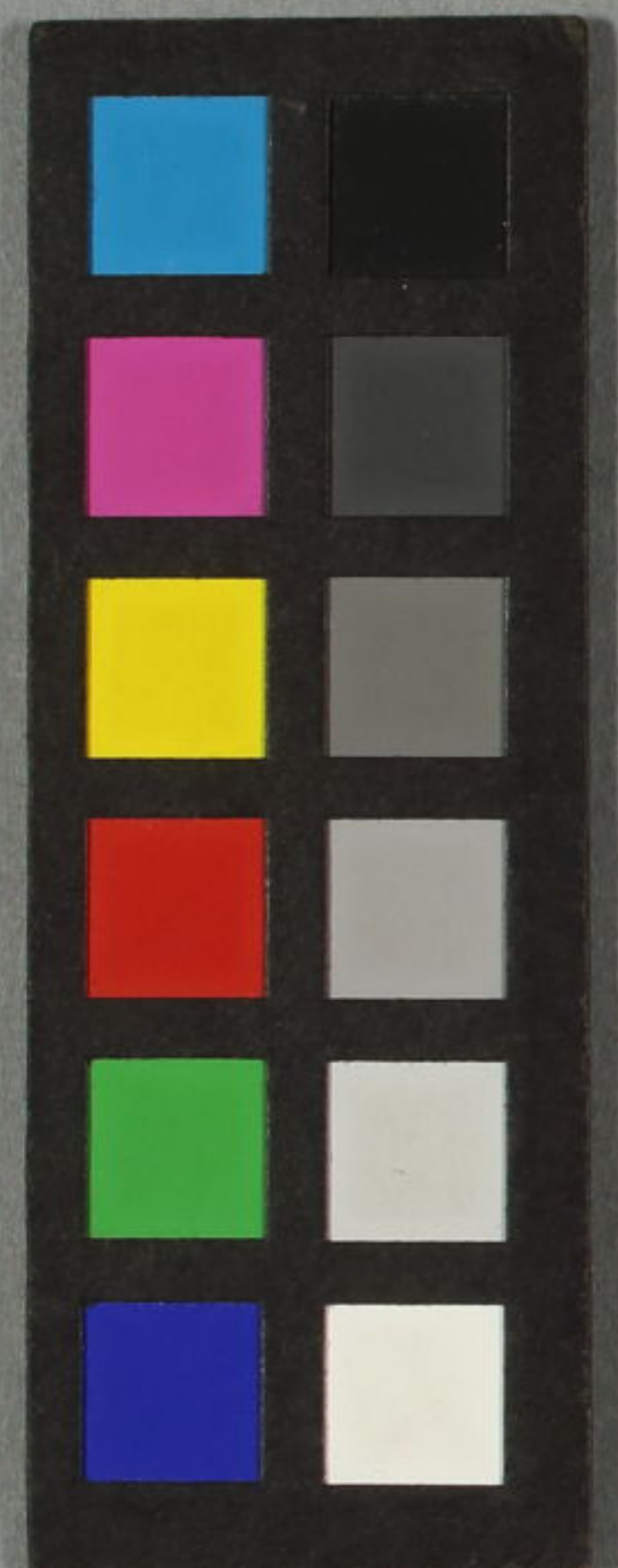
傳金應丹

調合有玉堂製代

余

書物其神明前 地本 甘泉堂 問屋 和泉屋市兵衛





天

馬馬作
國真画

中

^13
3771
2



立川馬馬作

壬辰春新彫

紙屋治玄清

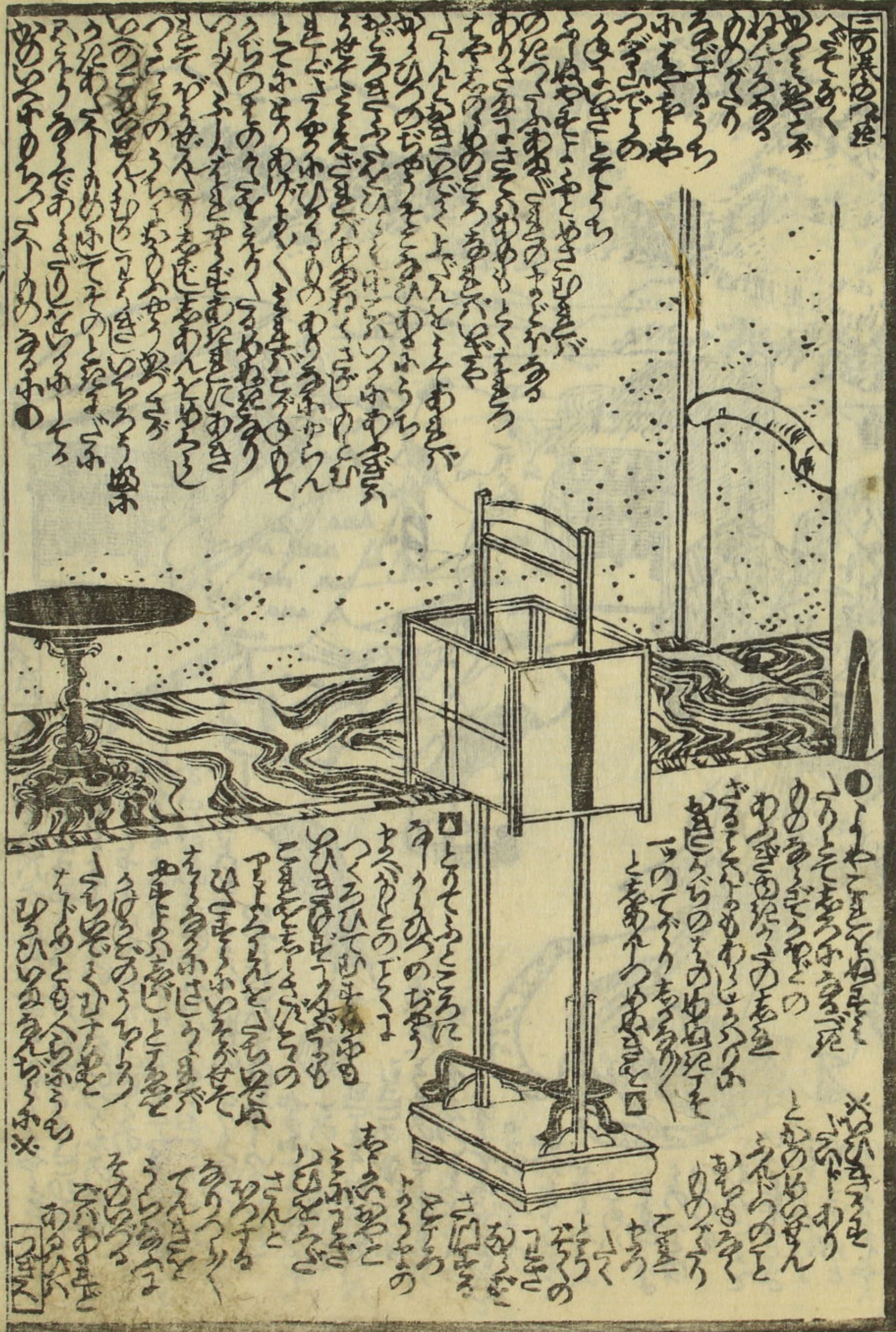
紙屋治玄清
紙屋治玄清

妖狐天網山鳥中

五渡亭國貞画

司馬神明前

甘泉堂梓





Vertical Japanese text in the upper left corner of the illustration, likely a title or introductory text.

Vertical Japanese text in the lower right corner of the illustration, likely a signature or commentary.



Vertical Japanese text in the upper left corner of the illustration, likely a title or introductory text.

Vertical Japanese text in the lower right corner of the illustration, likely a signature or commentary.



Handwritten Japanese text in vertical columns, located at the top of the left page, above the illustration.

Handwritten Japanese text in vertical columns, located at the bottom of the left page, below the illustration.



Handwritten Japanese text in vertical columns, located at the top of the right page, above the illustration.

Handwritten Japanese text in vertical columns, located at the bottom of the right page, below the illustration.



Handwritten Japanese text in vertical columns, located at the top of the page above the main illustration.

Handwritten Japanese text in vertical columns, located to the left of the main illustration.

Handwritten Japanese text in vertical columns, located to the left of the main illustration.

Handwritten Japanese text in vertical columns, located at the bottom of the page below the main illustration.



Handwritten Japanese text in vertical columns, located at the top of the page above the main illustration.

Handwritten Japanese text in vertical columns, located to the left of the main illustration.

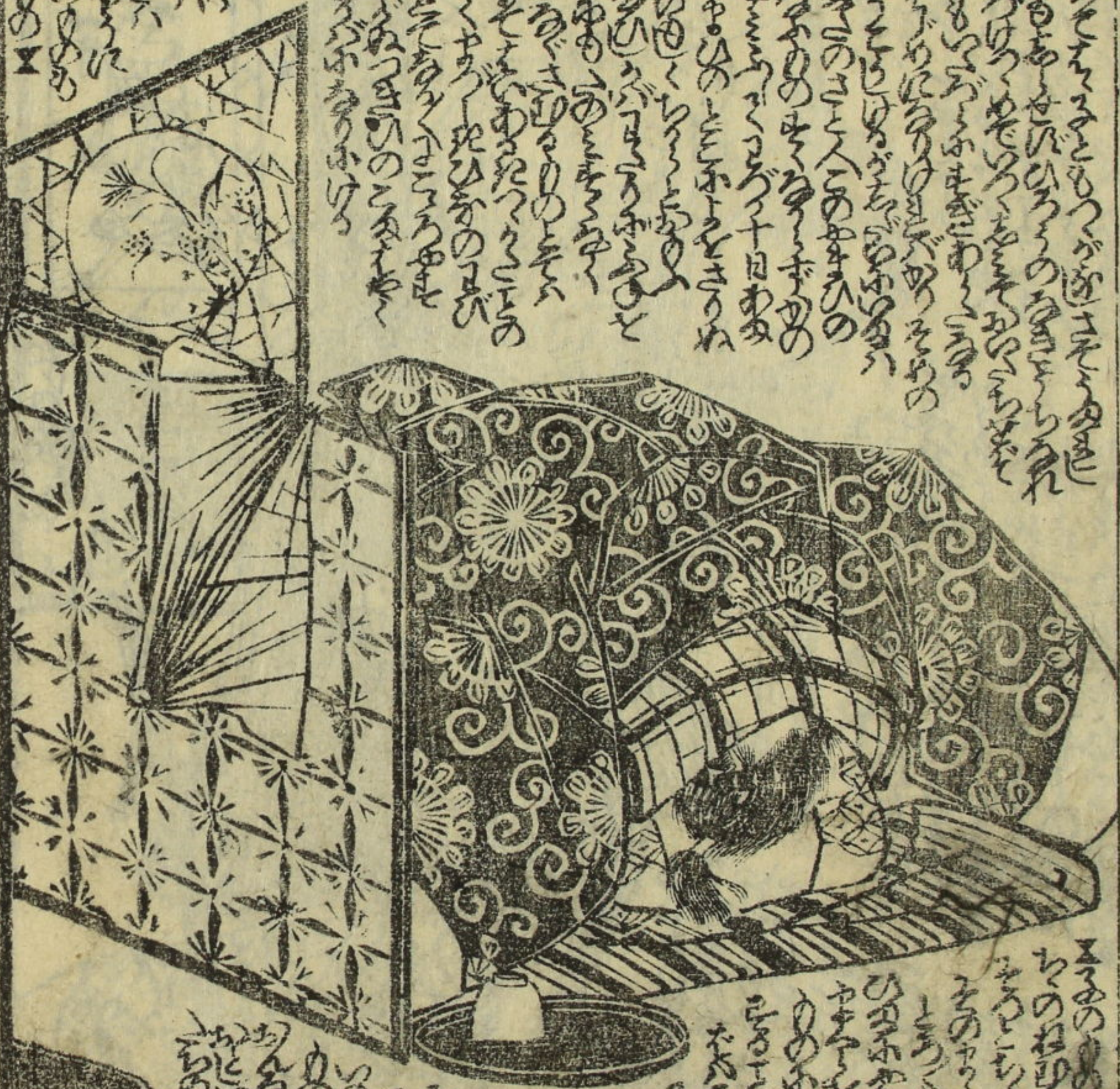
Handwritten Japanese text in vertical columns, located to the left of the main illustration.

Handwritten Japanese text in vertical columns, located at the bottom of the page below the main illustration.

Vertical handwritten text on the right margin of the top page.

Vertical handwritten text on the right margin of the bottom page.

Handwritten text in a vertical column on the top left of the right page.



Handwritten text in a vertical column on the bottom right of the right page.

Handwritten text in a vertical column on the top left of the left page.



Handwritten text in a vertical column on the bottom right of the left page.

Handwritten text in a cursive style, likely a preface or introductory text, located at the top of the right page.



Small handwritten text at the bottom of the right page, possibly a signature or a note.

Handwritten text in a cursive style, likely a preface or introductory text, located at the top of the left page.



Small handwritten text at the bottom of the left page, possibly a signature or a note.

Vertical handwritten text on the far left margin of the left page.

Handwritten text in a cursive style, likely a preface or introductory text, located at the top of the right page.



Handwritten text in a cursive style, likely a continuation of the text or a commentary, located at the bottom of the right page.

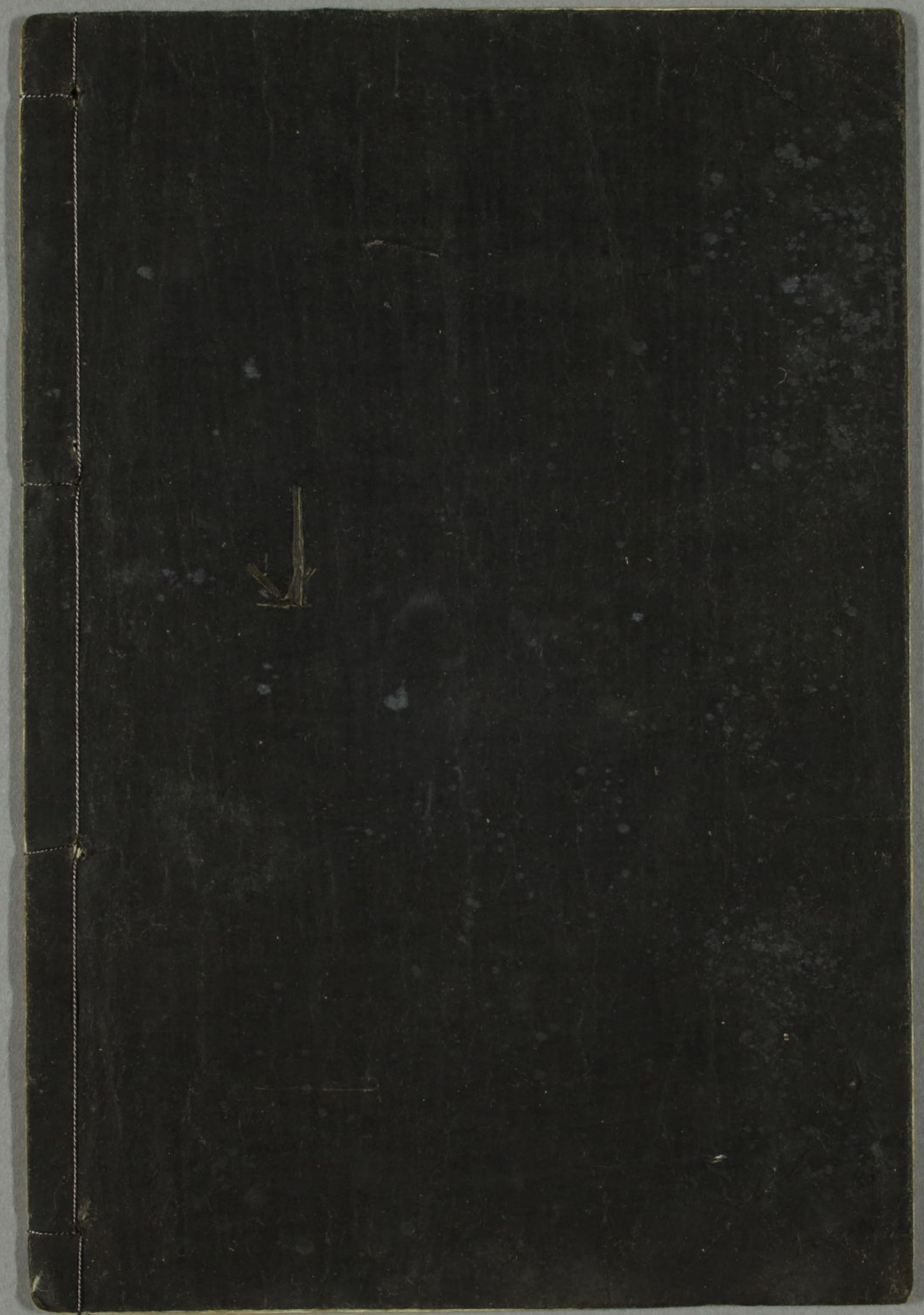
Handwritten text in a cursive style, likely a preface or introductory text, located at the top of the left page.



Handwritten text in a cursive style, likely a continuation of the text or a commentary, located at the bottom of the left page.

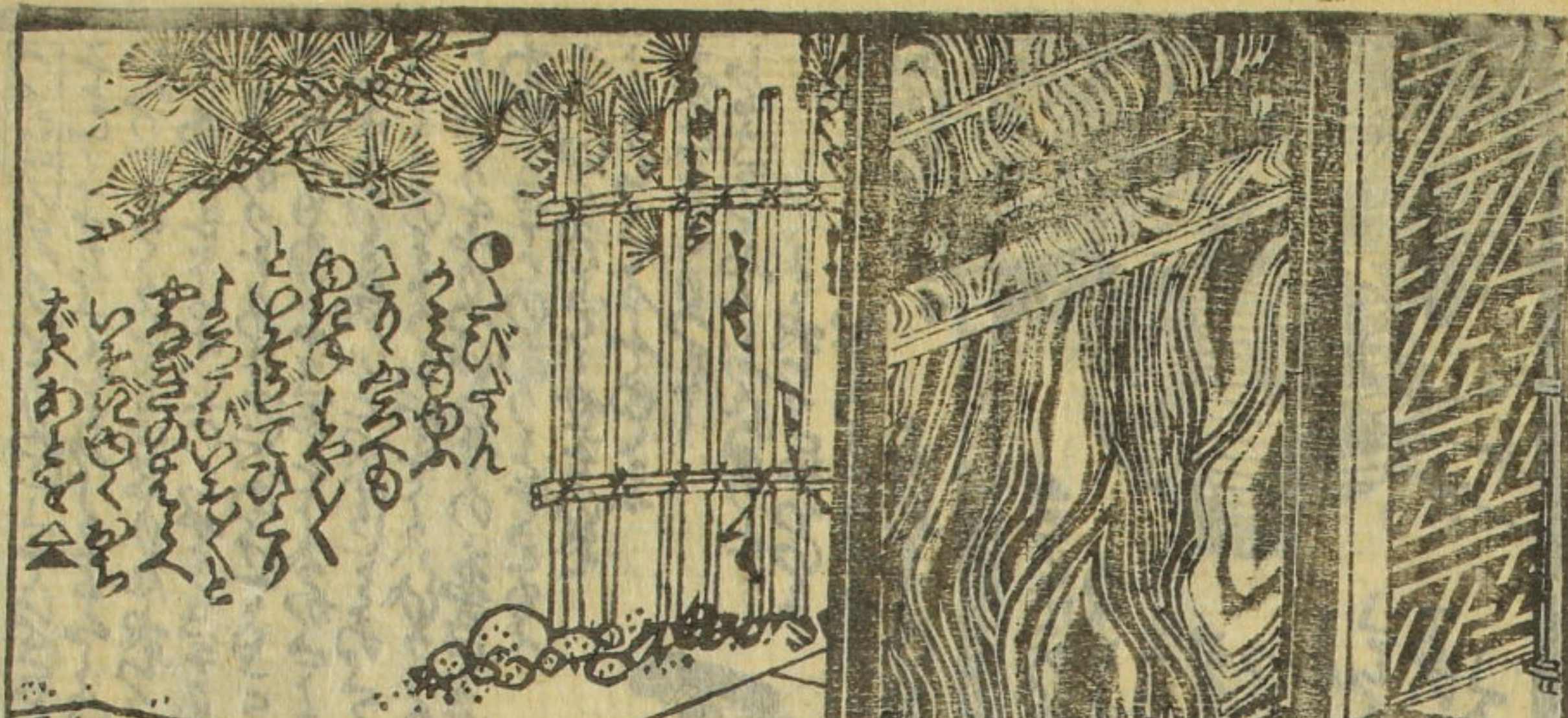
Handwritten characters, possibly a page number or a specific reference, located on the left margin of the left page.

Handwritten characters, possibly a page number or a specific reference, located on the left margin of the left page.





^13
 3771
 3



Handwritten Japanese text in the upper left corner, including the characters '東' (East) and '西' (West).

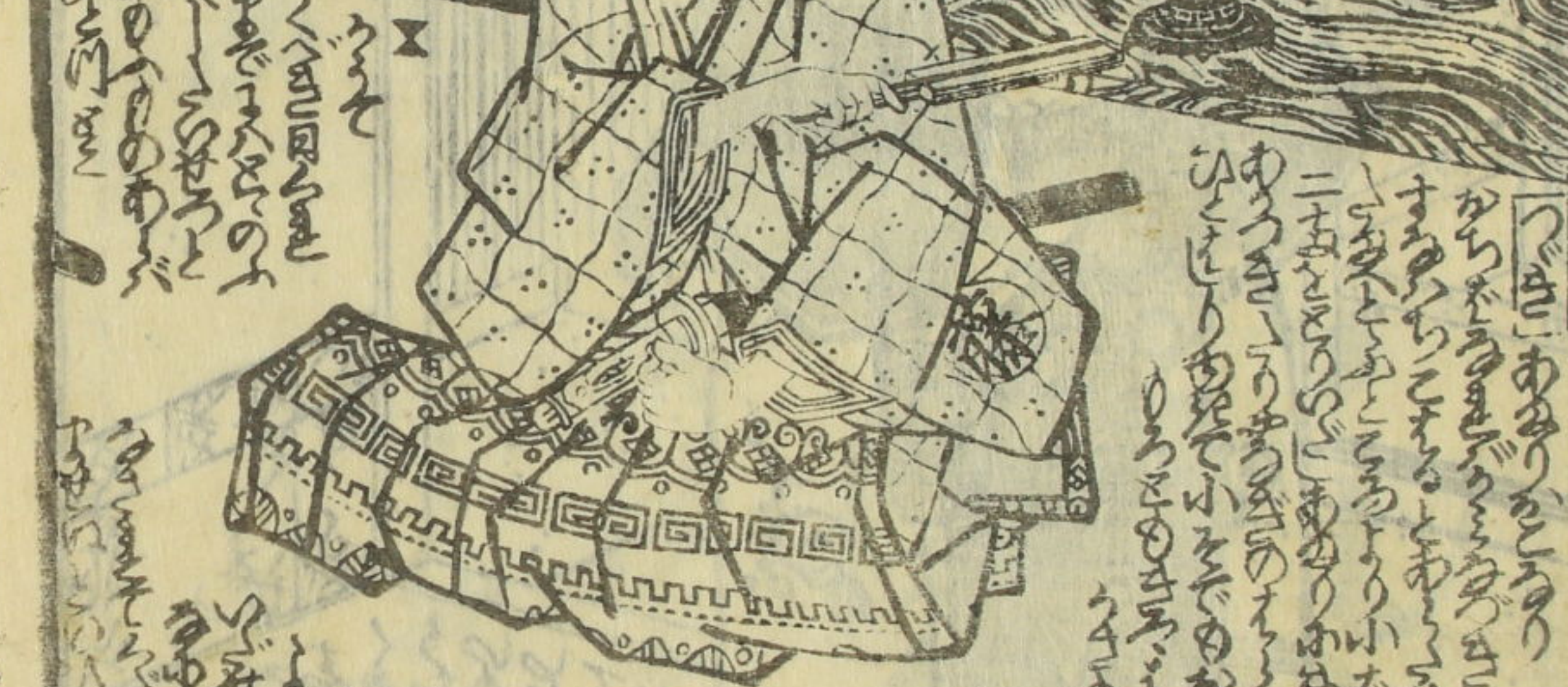
Handwritten Japanese text next to the seated figure.

Large block of handwritten Japanese text in the lower right area of the left page.

Handwritten Japanese text in the lower left corner of the left page.

Vertical handwritten text on the far left edge of the left page.

Vertical handwritten text on the far left edge of the left page.



Handwritten Japanese text next to the seated figure.

Large block of handwritten Japanese text in the lower right area of the right page.

Large block of handwritten Japanese text in the lower left area of the right page.

Vertical handwritten text on the far right edge of the right page.

Vertical handwritten text on the far right edge of the right page.

此の物語は、昔の物語に
 似て、大抵の事柄は、昔の
 物語に同じであるが、
 事柄の進め方は、昔の
 物語とは異なる。



此の物語は、昔の物語に
 似て、大抵の事柄は、昔の
 物語に同じであるが、
 事柄の進め方は、昔の
 物語とは異なる。

此の物語は、昔の物語に
 似て、大抵の事柄は、昔の
 物語に同じであるが、
 事柄の進め方は、昔の
 物語とは異なる。

此の物語は、昔の物語に
 似て、大抵の事柄は、昔の
 物語に同じであるが、
 事柄の進め方は、昔の
 物語とは異なる。

此の物語は、昔の物語に
 似て、大抵の事柄は、昔の
 物語に同じであるが、
 事柄の進め方は、昔の
 物語とは異なる。



此の物語は、昔の物語に
 似て、大抵の事柄は、昔の
 物語に同じであるが、
 事柄の進め方は、昔の
 物語とは異なる。

此の物語は、昔の物語に
 似て、大抵の事柄は、昔の
 物語に同じであるが、
 事柄の進め方は、昔の
 物語とは異なる。

此の物語は、昔の物語に
 似て、大抵の事柄は、昔の
 物語に同じであるが、
 事柄の進め方は、昔の
 物語とは異なる。

歌川國貞画 立川烏馬作



金毘羅魁利生續 第九編八冊 曲亭馬琴作

新編金瓶梅 第二編八冊 曲亭馬琴作

三國志画傳 第二編全冊 十返舎一九著

鶴十年對面曾我 春町作 豊國画 恋染末管亭環 春町作 豊國画

紙屋治兵衛 妖狐天網鳥 初編立川馬馬作

新語吟西行櫻 全六冊 柳亭種彦作

美艷仙女香 藤下 余 江戸芝神明前三嶋町 和泉屋市兵衛板

