

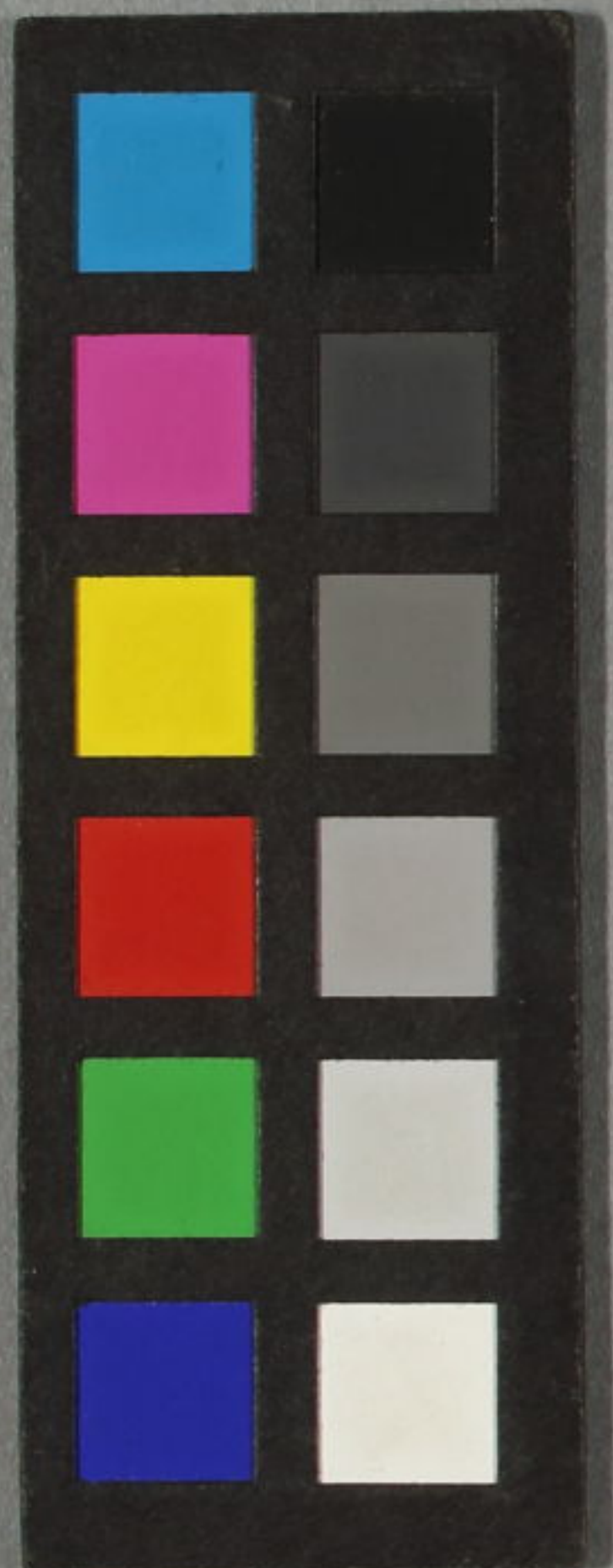
香蝶
標画

種彦諸國物語

近江の
巻後帙上

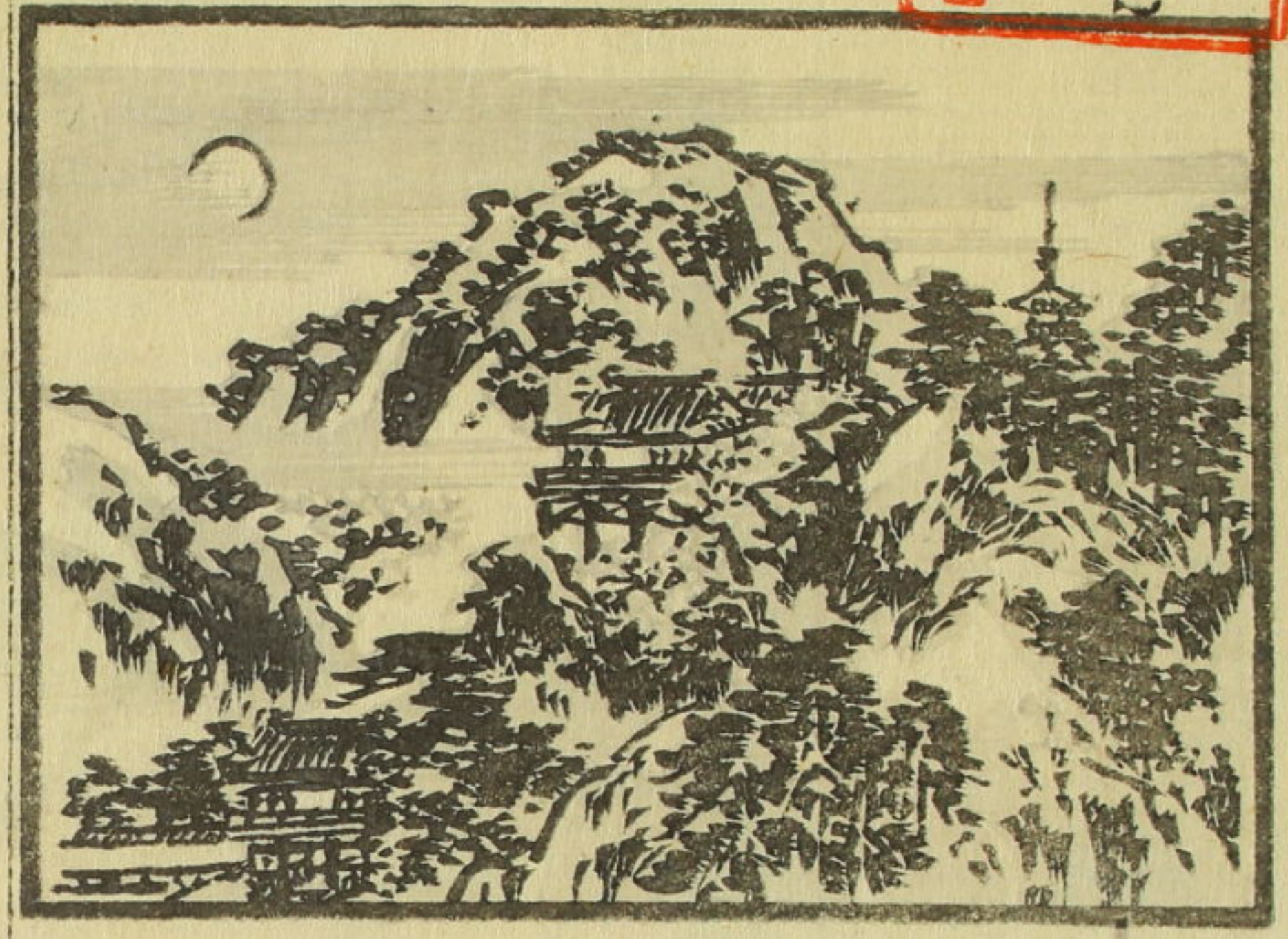


~ 13
3760
2



門へ13
 號3760
 卷 2

天保甲午孟春發市



耶 耶 諸 國
 物 語
 柳 亭 種 彦 作
 歌 川 國 貞 画
 東 都 芳 町 角
 榮 久 堂 製 本
 近 江 卷
 後 帙 上

前帙四冊よあの後帙とて近江出羽二ヶ所の物語全とす

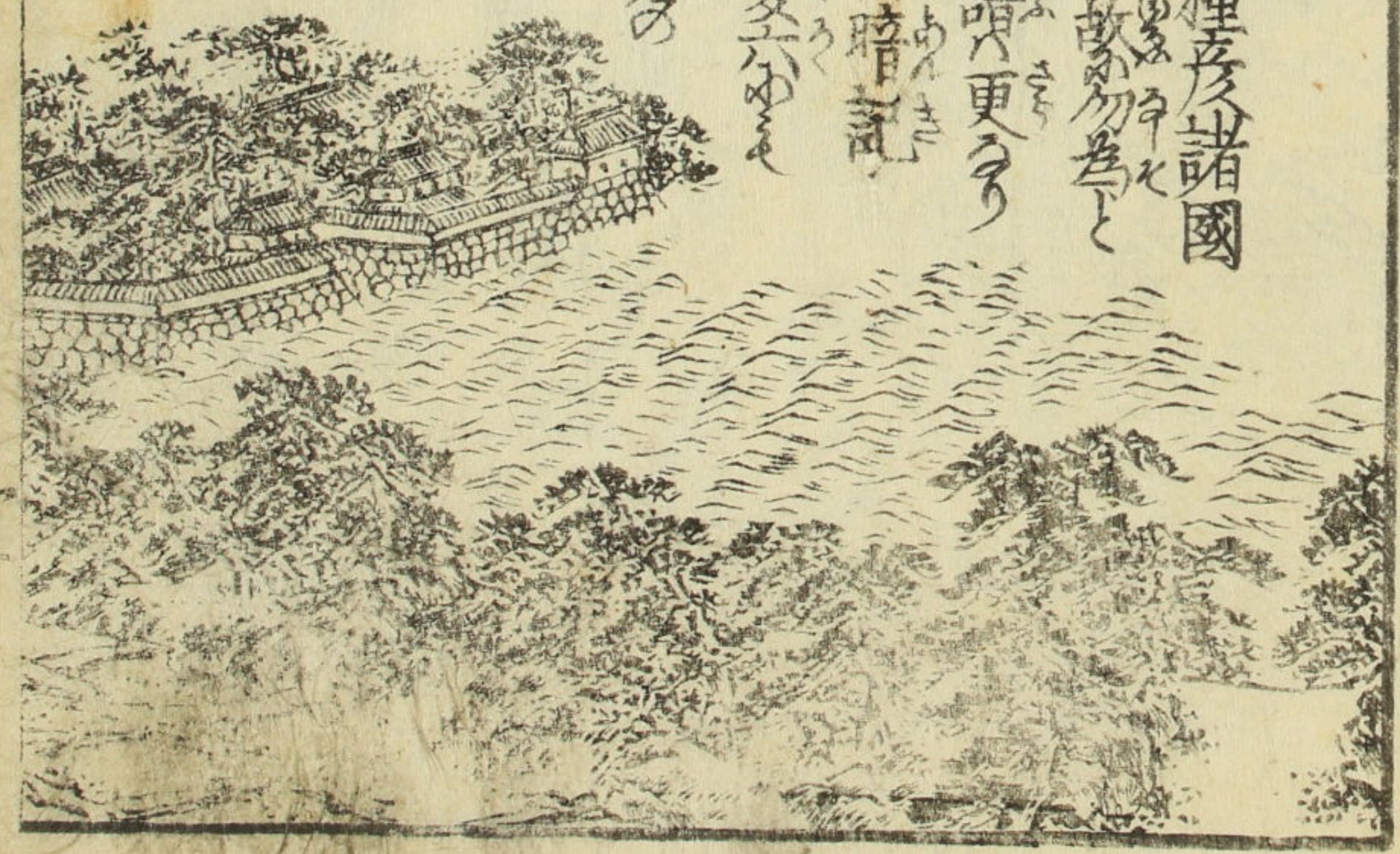
附言

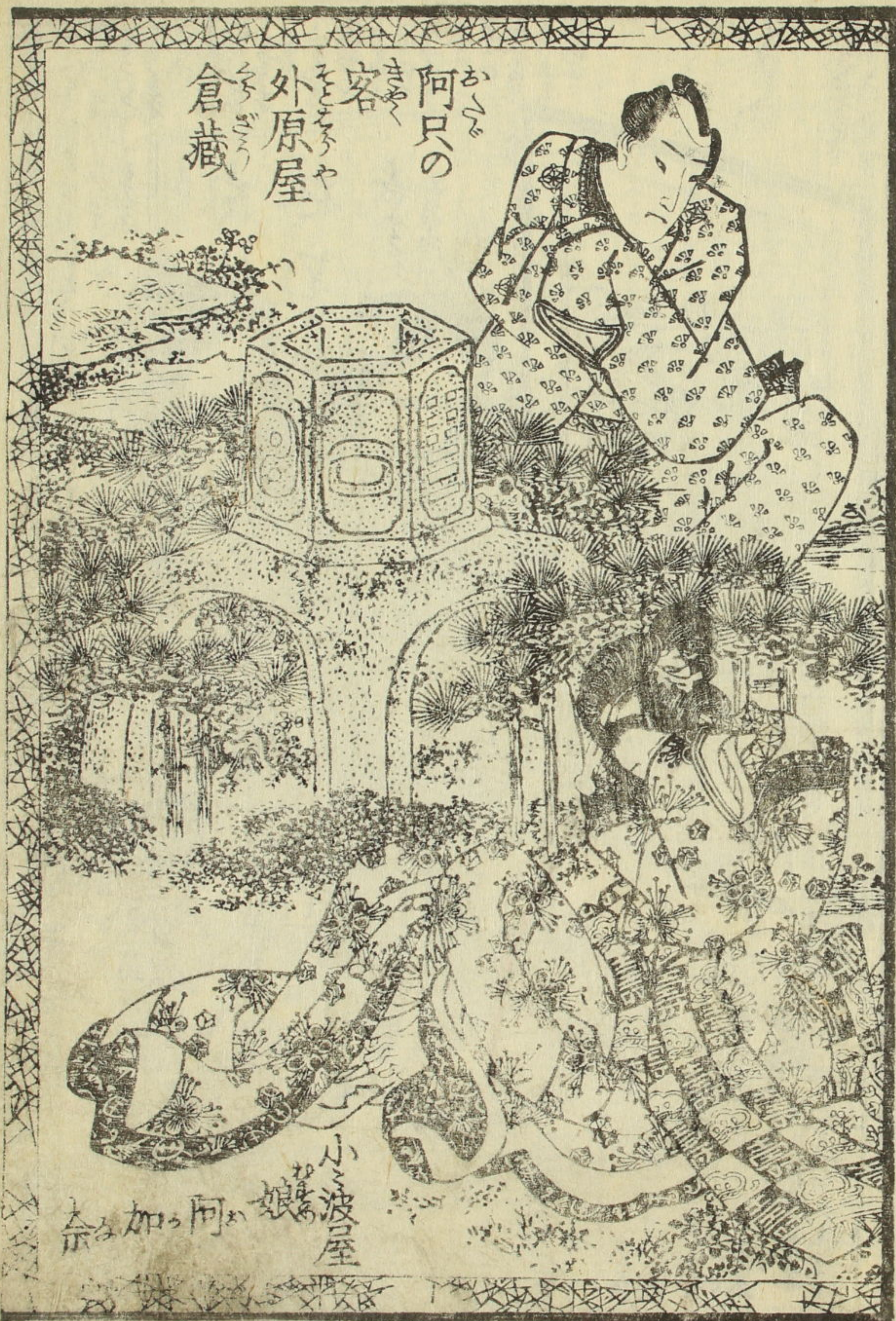
前帙發取とて後表紙を有るは既種彦諸國
 物語と記するは是書房のさうらう故物と
 制し名榮久堂突つて曰隨筆漫画圖讀更
 赤本ゆえ家の化物十六勳をあらわすの暗記

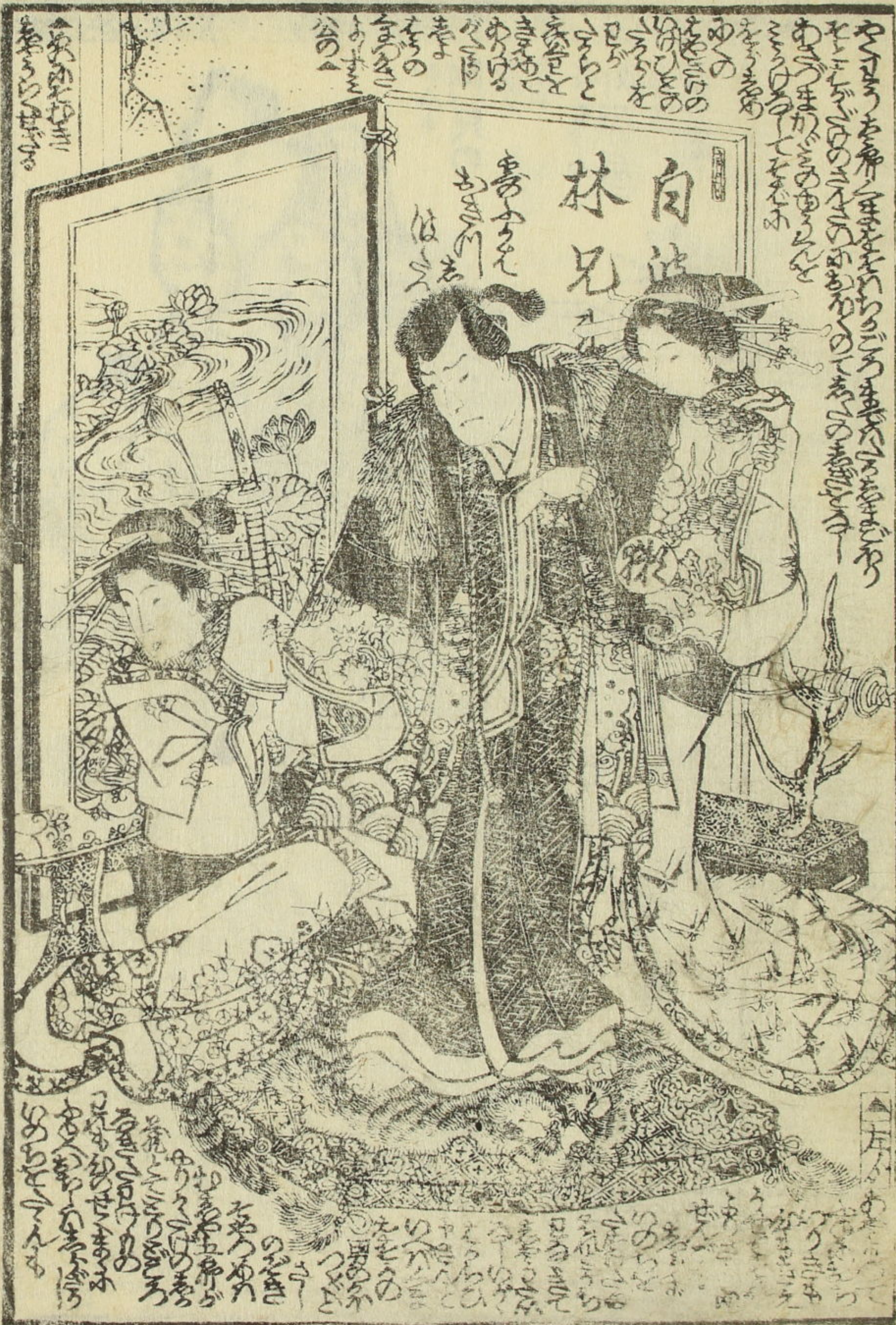
せざればあもの物のとくもあつた近年の凶饑
 画の名を題するは秋原來童子の玩弄のやま
 草浦の影もその後えか意中の駐りて
 篇近江の巻とて出羽の國ありての短話を
 附す是近江物語のきりぬきぬきとす

天保五年甲午春 柳亭種彦記

下下二







Vertical text column on the far left of the illustration.

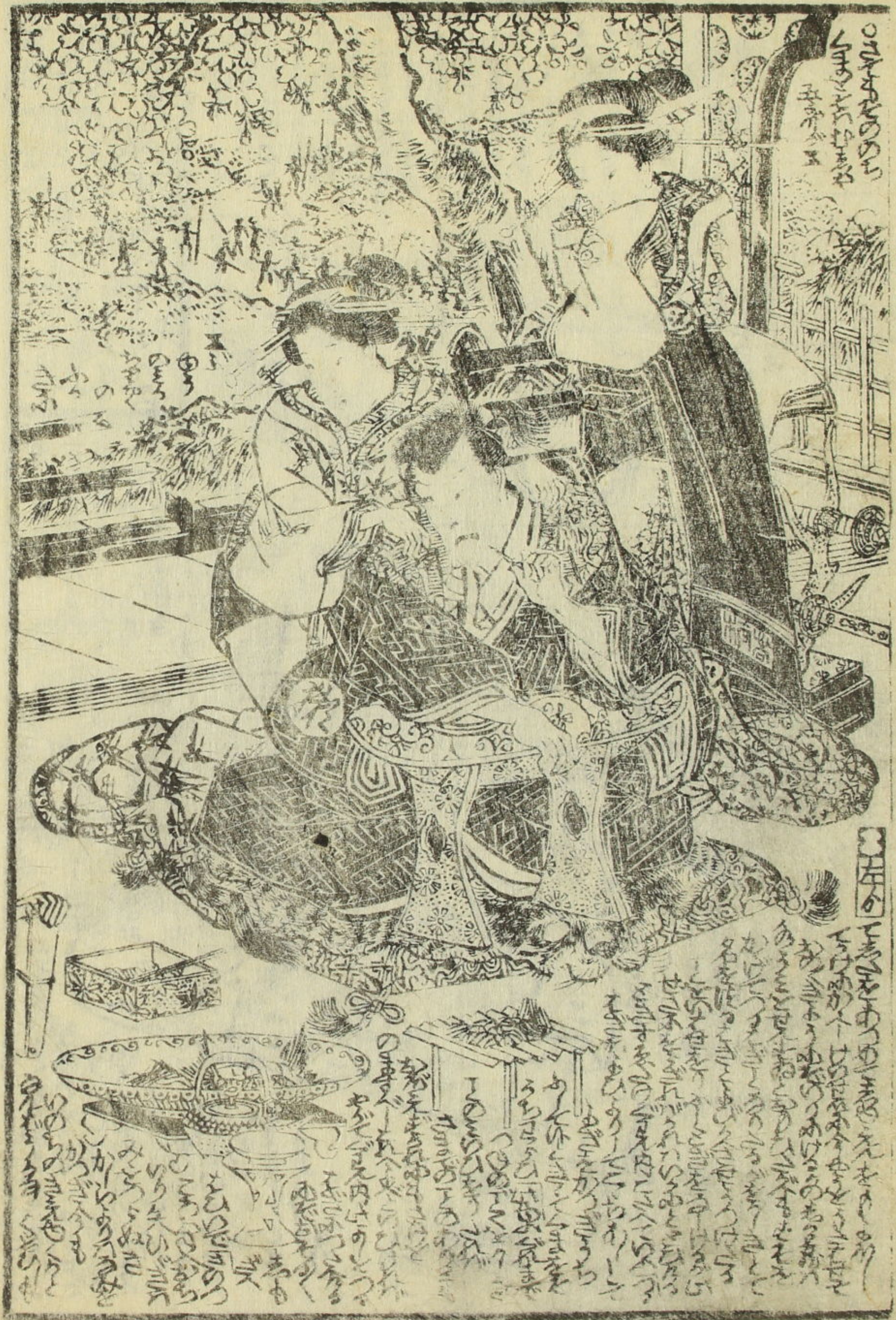
Vertical text columns at the top of the illustration.

Vertical text columns at the bottom of the illustration.



Vertical text columns at the top of the illustration.

Vertical text columns at the bottom of the illustration.





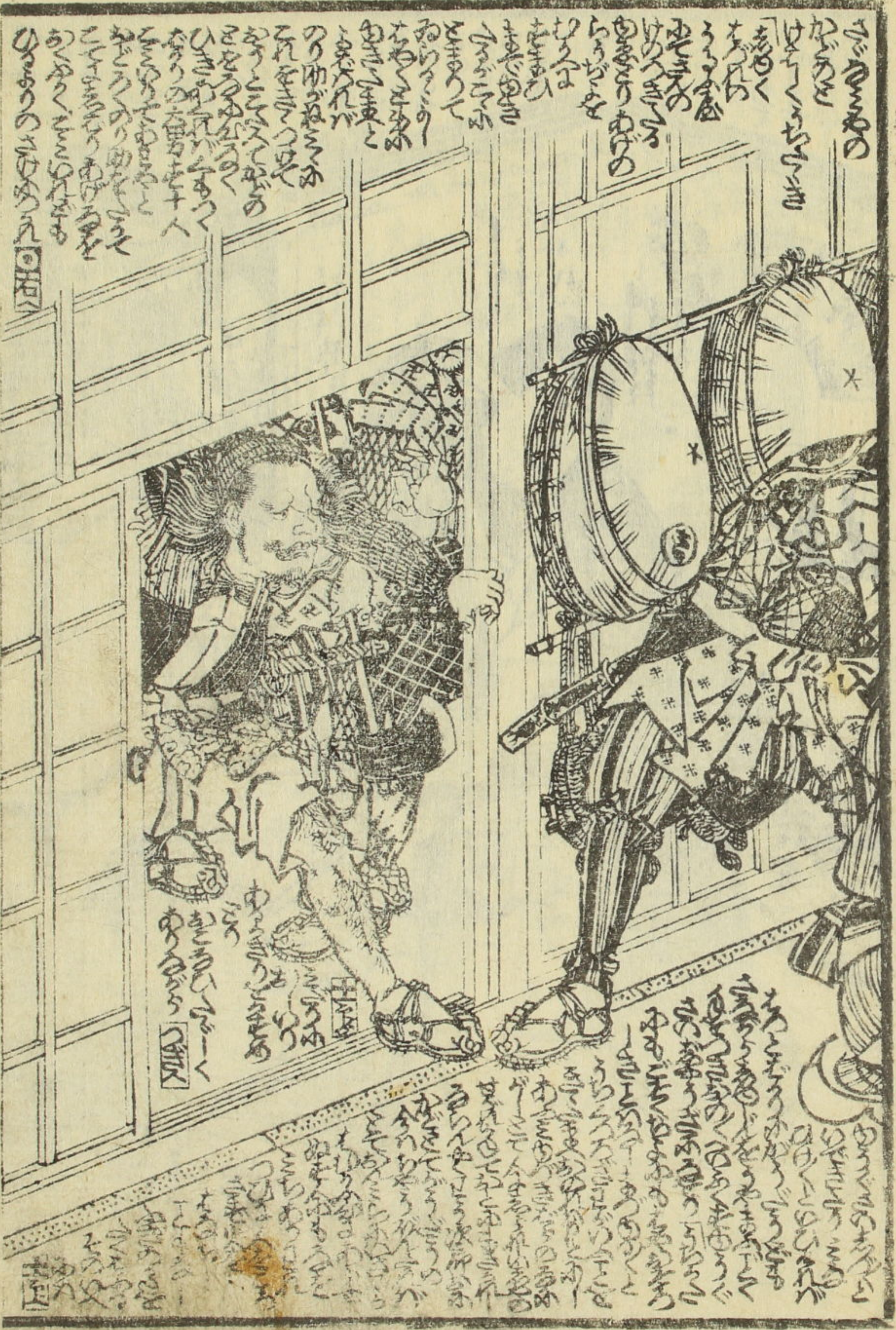
Handwritten text in a cursive style, likely a commentary or a transcription of dialogue related to the scene above. The text is written in vertical columns, starting from the right side of the page and moving towards the left. The characters are small and densely packed, typical of the 'kuzushiji' style used in such documents.

Additional handwritten text, continuing the commentary or transcription from the upper section. It follows the same vertical layout and cursive style as the text above, providing further context or details about the scene depicted in the illustration.



Handwritten text in a cursive style, likely a commentary or a transcription of dialogue related to the scene above. The text is written in vertical columns, starting from the right side of the page and moving towards the left. The characters are small and densely packed, typical of the 'kuzushiji' style used in such documents.

Additional handwritten text, continuing the commentary or transcription from the upper section. It follows the same vertical layout and cursive style as the text above, providing further context or details about the scene depicted in the illustration.

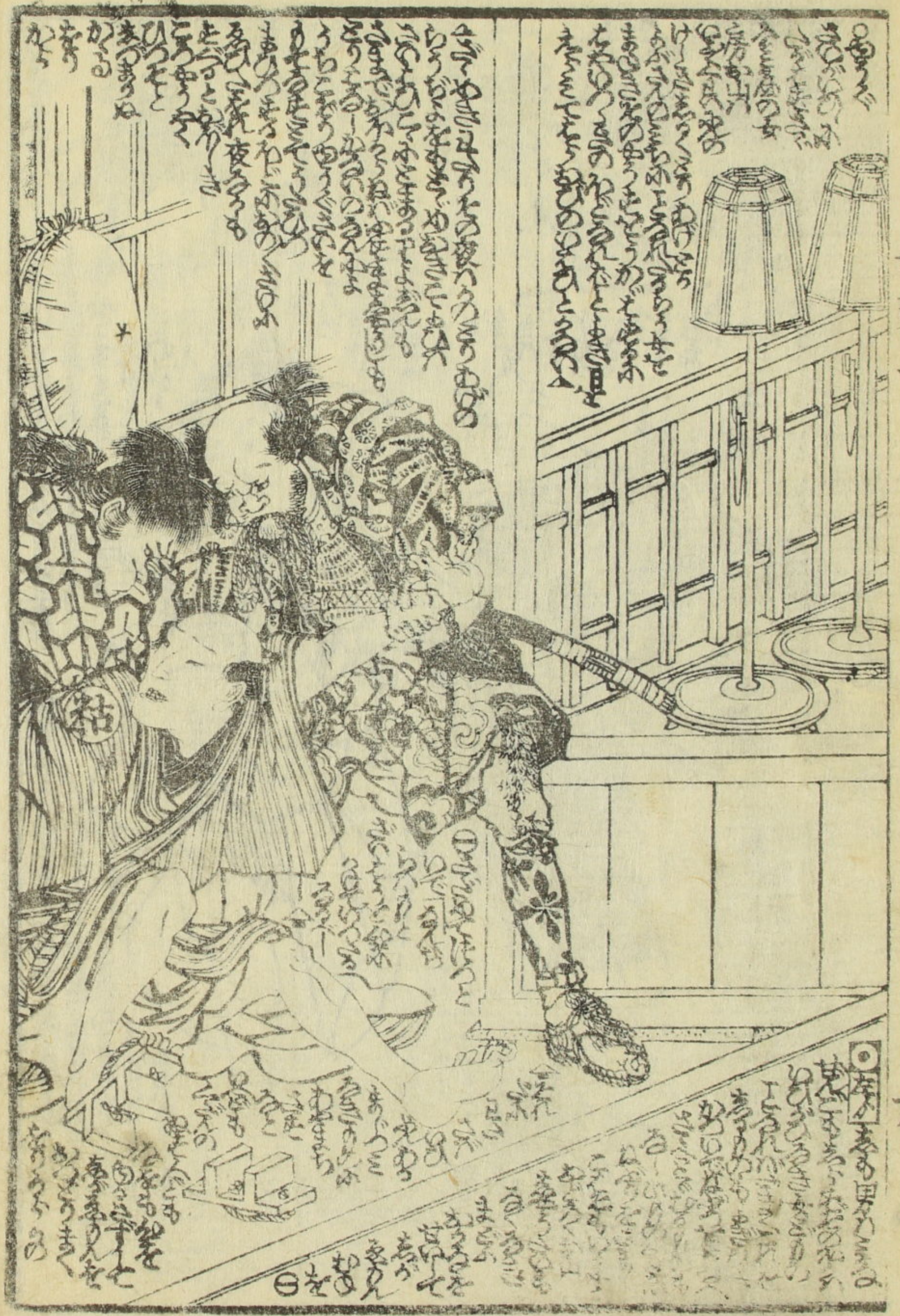


Handwritten Japanese text in vertical columns, located at the top of the page. The text includes characters such as 大鼓 (Taiko) and 小鼓 (Shiko).

Handwritten Japanese text in vertical columns, located at the bottom of the page. The text includes characters such as 大鼓 (Taiko) and 小鼓 (Shiko).

Vertical text on the left margin: 大鼓 (Taiko)

Vertical text on the left margin: 小鼓 (Shiko)



Handwritten Japanese text in vertical columns, located at the top of the page. The text includes characters such as 大鼓 (Taiko) and 小鼓 (Shiko).

Handwritten Japanese text in vertical columns, located at the bottom of the page. The text includes characters such as 大鼓 (Taiko) and 小鼓 (Shiko).

Vertical text on the right margin: 大鼓 (Taiko)

Vertical text columns at the top of the left page, likely identifying characters or scenes.



Vertical text columns at the bottom of the left page, likely identifying characters or scenes.

下 二

Vertical text column on the left side of the page, possibly a title or chapter heading.

Vertical text columns at the top of the right page, likely identifying characters or scenes.



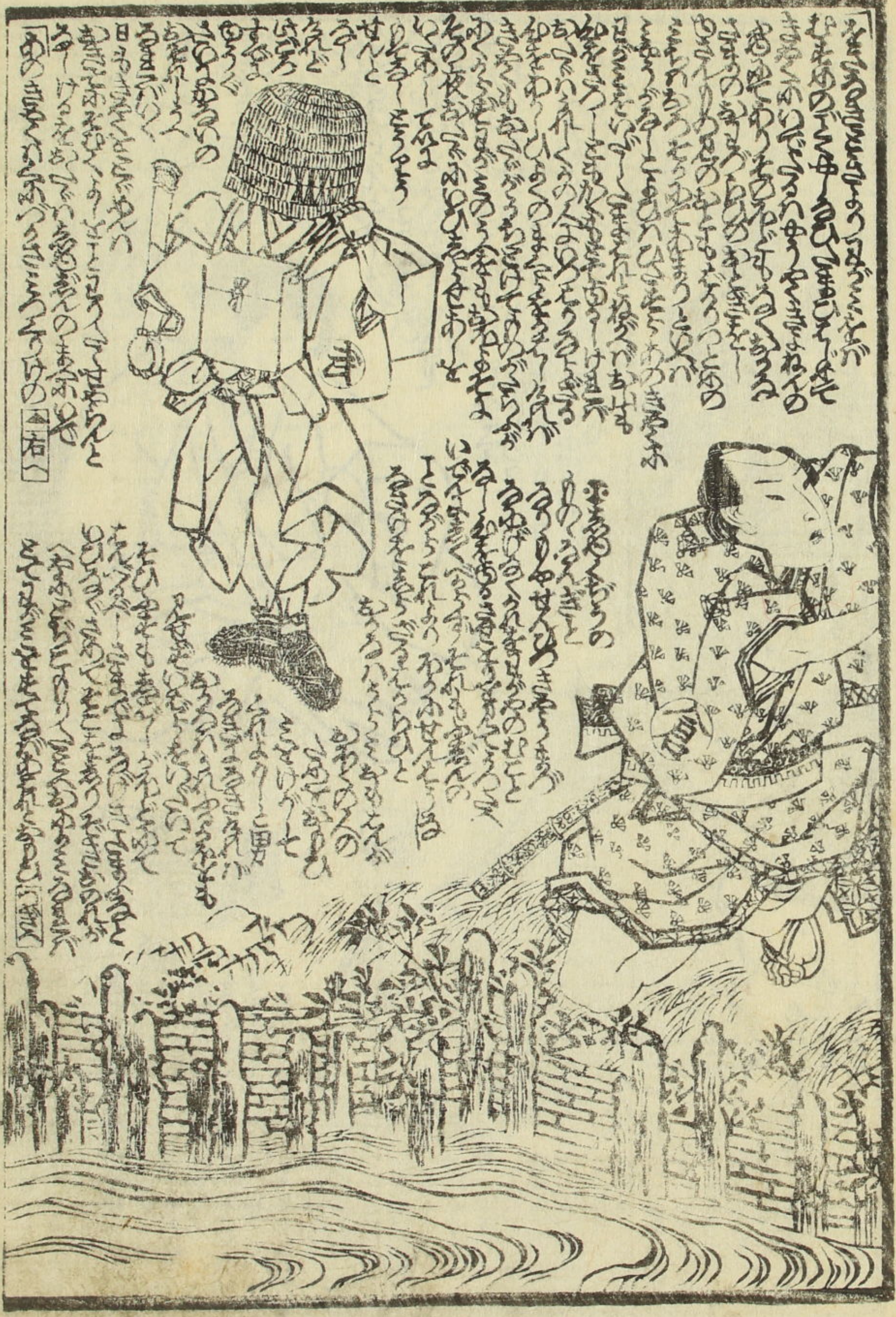
Vertical text columns at the bottom of the right page, likely identifying characters or scenes.

下 二

Handwritten notes in a cursive script, likely a form of shorthand or a specific dialect, covering the top and right sides of the page. The text is dense and fills the upper portion of the page, with some lines extending down the right margin.



Handwritten notes in a cursive script, similar to the left page, covering the top and right sides of the page. The text is dense and fills the upper portion of the page, with some lines extending down the right margin.





Vertical columns of handwritten Japanese text surrounding the top illustration.



Vertical columns of handwritten Japanese text surrounding the middle illustration.



Vertical columns of handwritten Japanese text surrounding the bottom illustration.



Vertical columns of handwritten Japanese text surrounding the top part of the large illustration.

Vertical columns of handwritten Japanese text surrounding the bottom part of the large illustration.

國貞画種彦作

此の巻は、
 一陽齋豊国画
 由緒ある
 文筆にて
 書かれたり
 故に
 貴重なり
 且つ
 昔より
 名譽あり
 故に
 珍重す
 べきなり
 此の巻は
 昔より
 名譽あり
 故に
 珍重す
 べきなり
 此の巻は
 昔より
 名譽あり
 故に
 珍重す
 べきなり



此の巻は、
 一陽齋豊国画
 由緒ある
 文筆にて
 書かれたり
 故に
 貴重なり
 且つ
 昔より
 名譽あり
 故に
 珍重す
 べきなり
 此の巻は
 昔より
 名譽あり
 故に
 珍重す
 べきなり
 此の巻は
 昔より
 名譽あり
 故に
 珍重す
 べきなり

嘉永四年 新春刊行

邯鄲諸國物語遠江の巻

故柳亭先生舊案 一陽齋豊国画

肝遠行の後、此草造紙書巻、及びひまづ、字に五十年如昔、はあ腹元、
 此の巻は、
 一陽齋豊国画
 由緒ある
 文筆にて
 書かれたり
 故に
 貴重なり
 且つ
 昔より
 名譽あり
 故に
 珍重す
 べきなり

伊勢の巻 合本三袋

近江の巻 合本二袋

大和の巻 合本三袋

同攝津の巻 前後合本三袋 笠亭仙果作

笠亭仙果

附出羽の巻

播磨の巻 合本三袋

芳町山本平吉版

程氏法園抄

天保五年
甲午發春



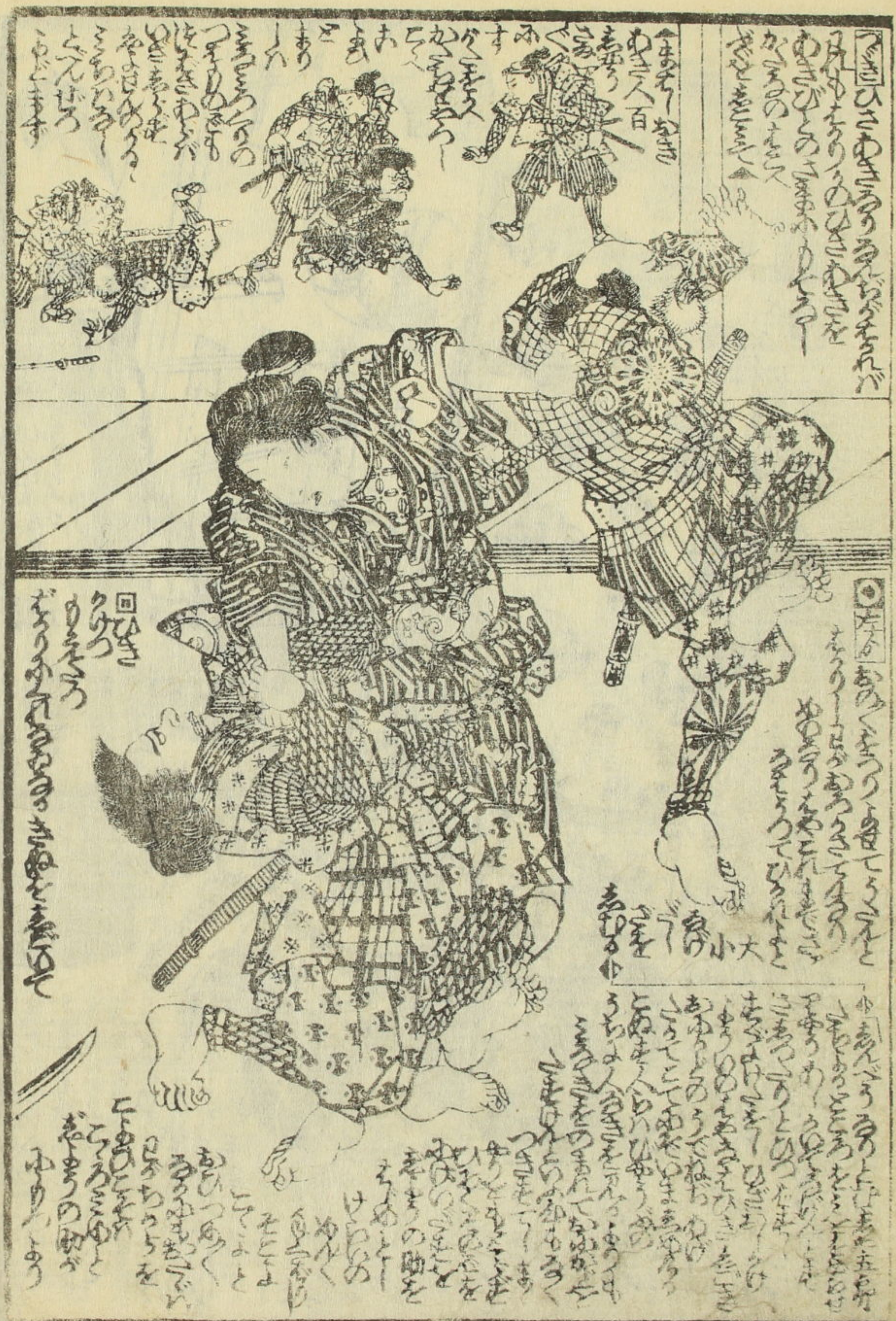
國貞堂



近江の巻

附 後帳下
出羽の巻





Vertical columns of handwritten Japanese text, likely a list or inventory, located at the top of the right page.

Vertical columns of handwritten Japanese text, located in the middle section of the right page.

Vertical columns of handwritten Japanese text, located in the lower middle section of the right page.

Vertical columns of handwritten Japanese text, located at the bottom of the right page.



Vertical columns of handwritten Japanese text, located at the top of the left page.

Vertical columns of handwritten Japanese text, located in the middle section of the left page.

Vertical columns of handwritten Japanese text, located in the lower middle section of the left page.

Vertical columns of handwritten Japanese text, located at the bottom of the left page.



出羽の巻
出羽の巻 出羽の巻

出羽の巻
出羽の巻

出羽の巻
出羽の巻



近江の国
近江の国



近江の国
近江の国



出羽の国
出羽の国

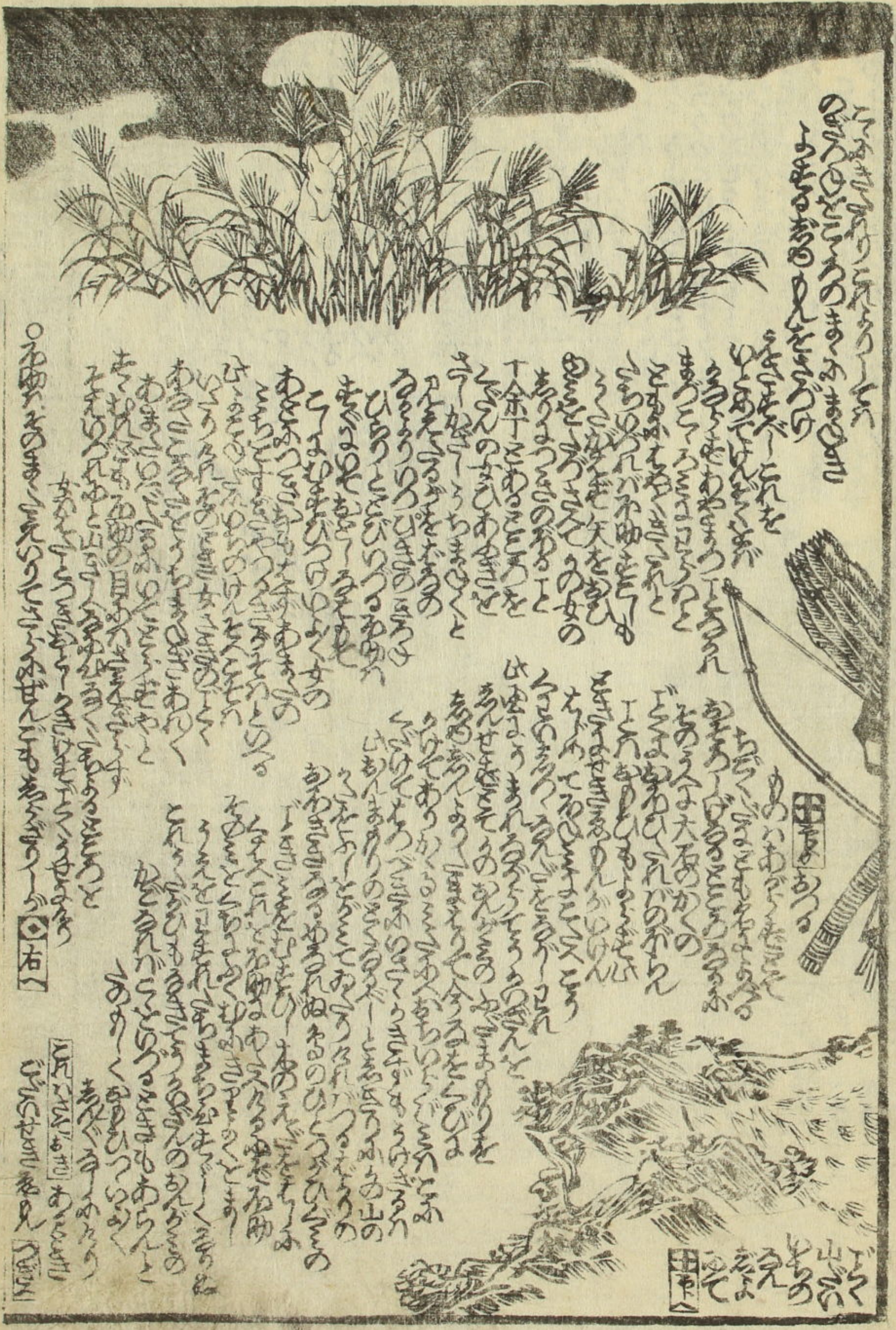


出羽の国
出羽の国



Vertical columns of handwritten Japanese text surrounding the top and right sides of the illustration.

Horizontal columns of handwritten Japanese text located at the bottom of the illustration.

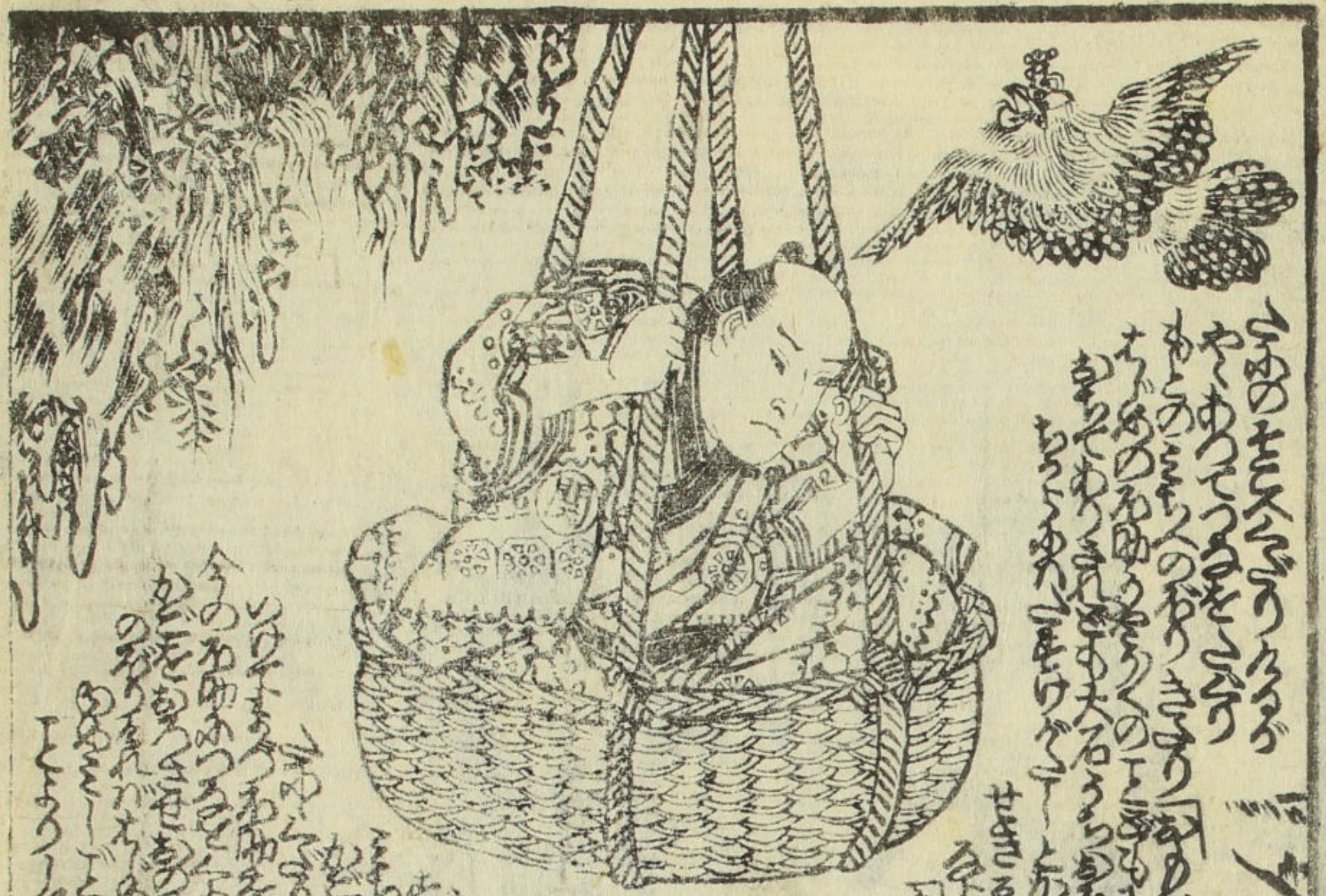
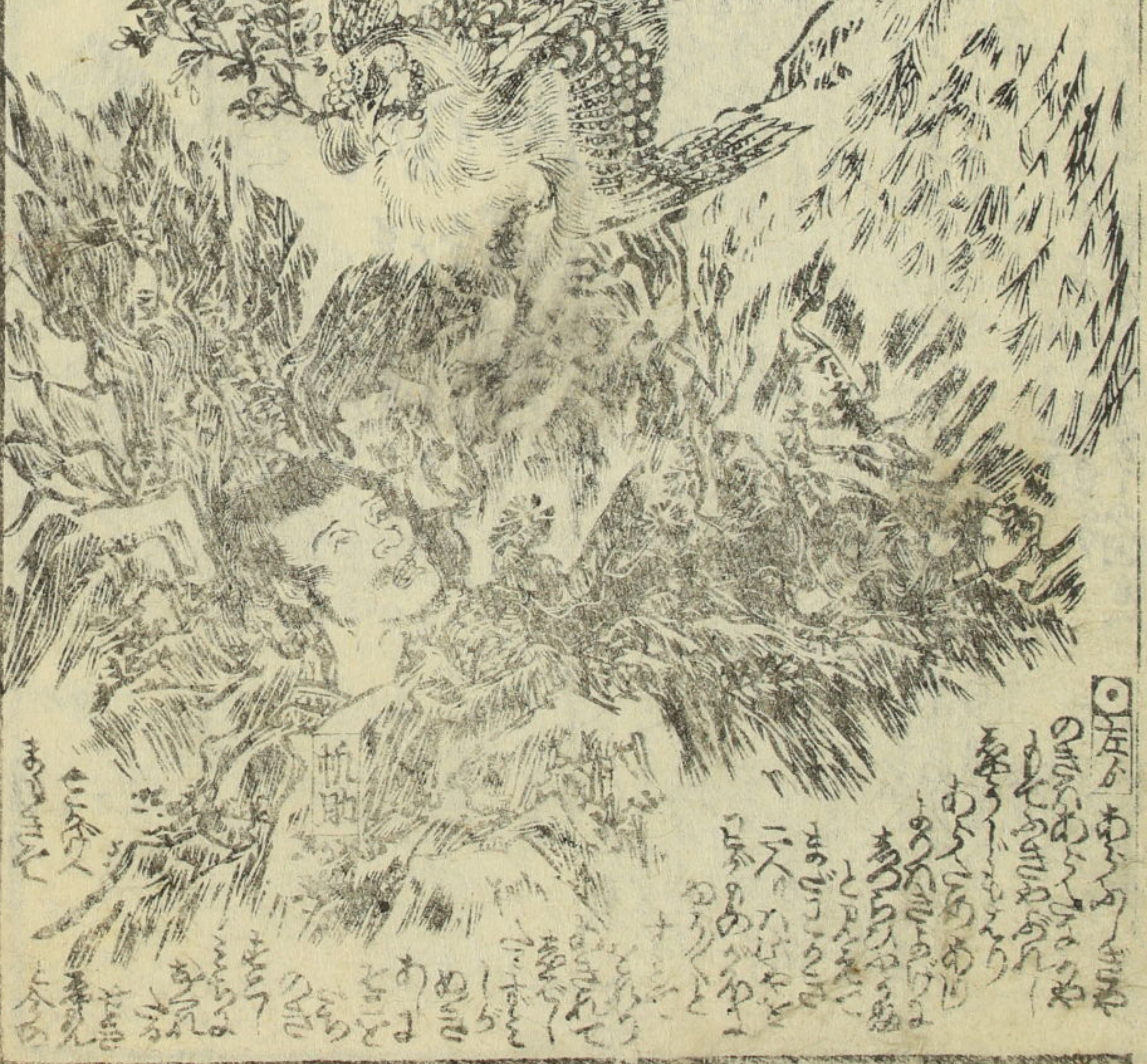


Vertical columns of handwritten Japanese text surrounding the top and left sides of the illustration.

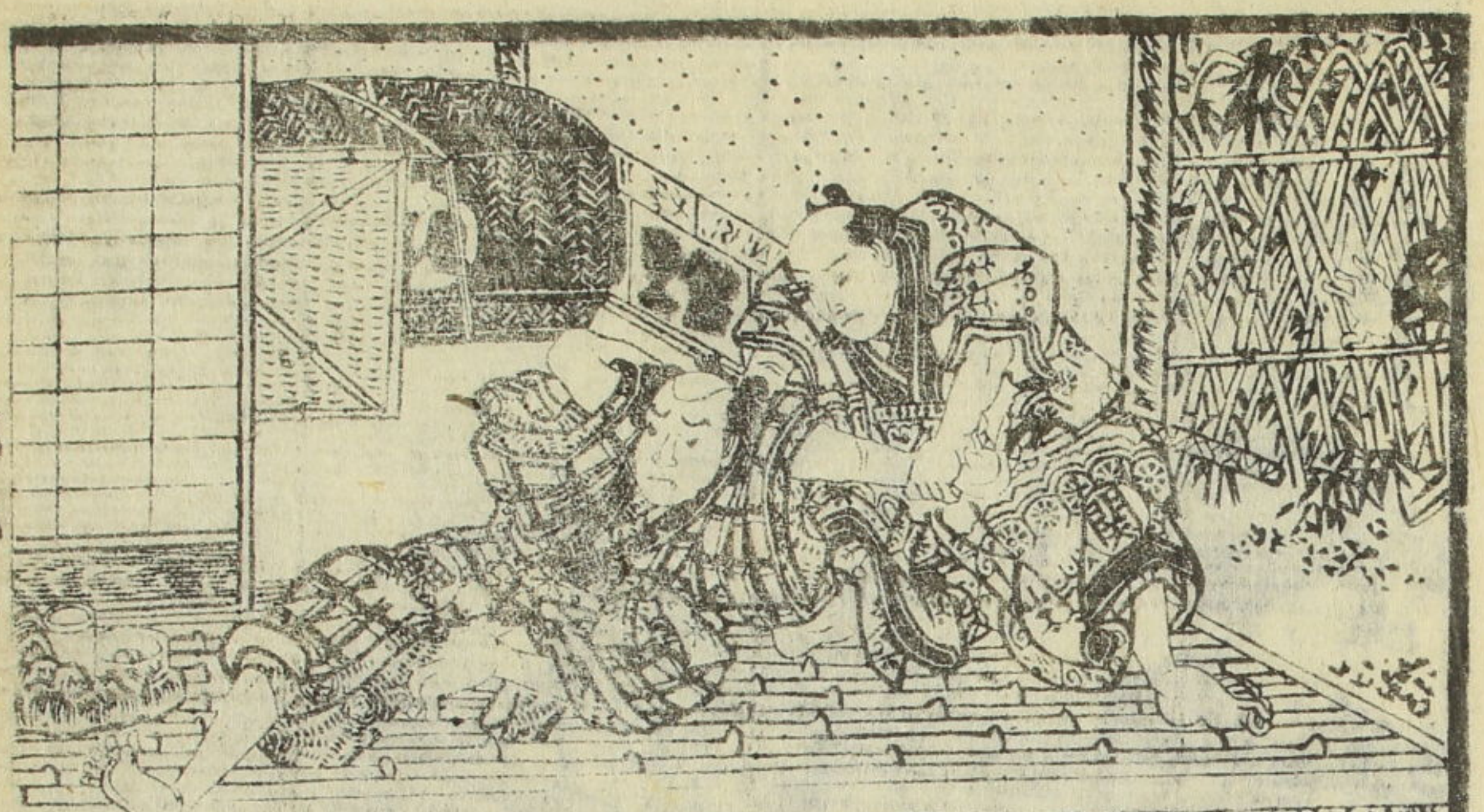
A large block of handwritten Japanese text, oriented vertically, filling the central area of the page.

Horizontal columns of handwritten Japanese text located at the bottom of the illustration.

道今の初めは...
鳥の鳴き声...
山の上...
霧の...
雲の...
雨の...
雪の...
風の...
雷の...
電の...
虹の...
月の...
星の...
空の...
地の...
水の...
火の...
木の...
草の...
花の...
果の...
葉の...
根の...
幹の...
枝の...
実の...
種の...
芽の...
葉の...
花の...
果の...
実の...
種の...
芽の...



鳥の鳴き声...
山の上...
霧の...
雲の...
雨の...
雪の...
風の...
雷の...
電の...
虹の...
月の...
星の...
空の...
地の...
水の...
火の...
木の...
草の...
花の...
果の...
葉の...
根の...
幹の...
枝の...
実の...
種の...
芽の...
葉の...
花の...
果の...
実の...
種の...
芽の...





出羽國飽海郡鳥海山
正一位
大物忌
神社



柳其種彦作



[Detailed handwritten text, likely a preface or commentary by the artist, written in a dense, cursive hand. It discusses the composition and the figures in the painting.]

歌川國貞画

浄書千形道友

江戸勸進大角カ
相撲起顯
八輯
九輯

[Handwritten commentary describing the 'Ukiyodoko' (sumo) series, mentioning its popularity and the artist's style.]

永元百人一首文字抄
全

御詠染逢山鹿子
六編揃

菊来百人一首文字抄
全

[Handwritten commentary for 'Okuriyama' and 'Shika', describing the nature of these works.]

浄家
正流
子供案文
全

源氏六十四帖
極彩色
小冊画

繪入
講釈
實語教雅繪解
全

[Handwritten commentary for 'Genji Monogatari' and 'Ukiyodoko', detailing the artist's approach to these subjects.]

榮久堂蔵新版新舊神史目録

書肆

江戸より町おやより橋角
山本平吉梓

