

天保壬辰孟春

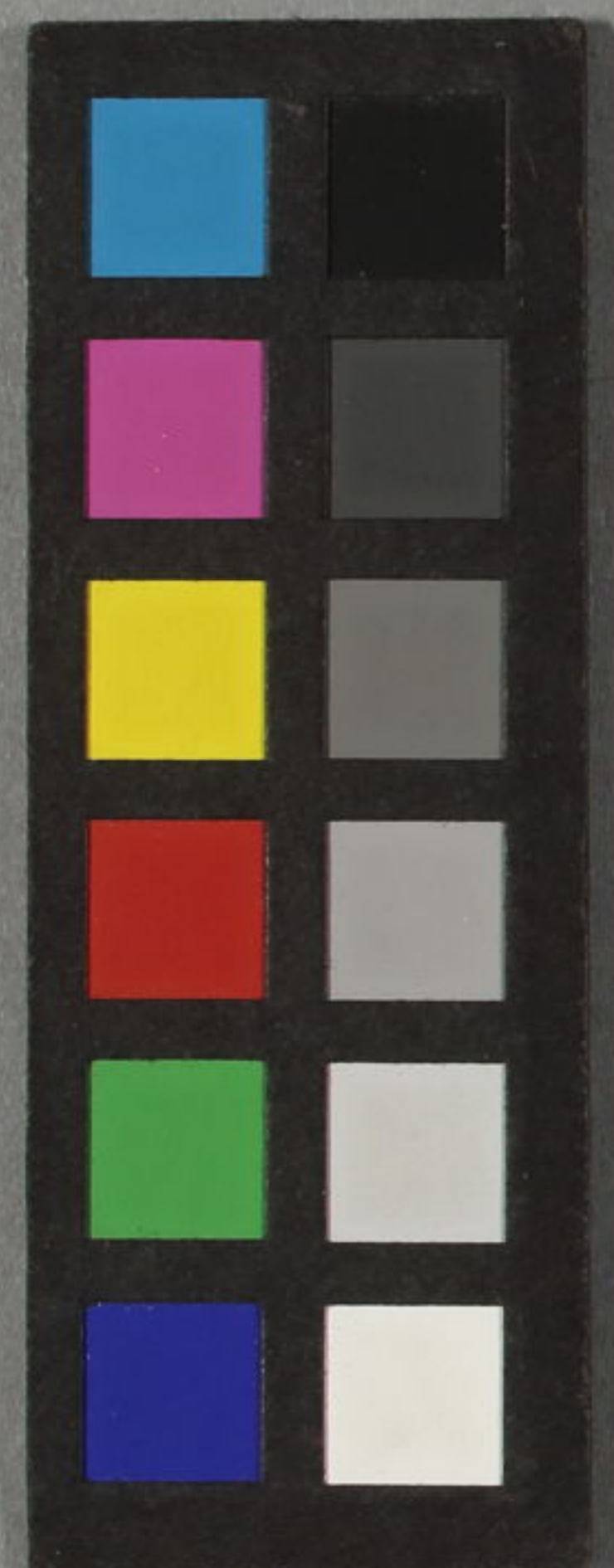
田舎源氏 六

おせ *Osawan*
傍紫

田舎源氏 六編上

柳亭種彦作
歌川國貞画

通油町鶴屋板



~ 13
3742
6



高九



田舎

六編下

仙雀
学样

如凡
作与世
美
因負画
種彦作



六編上



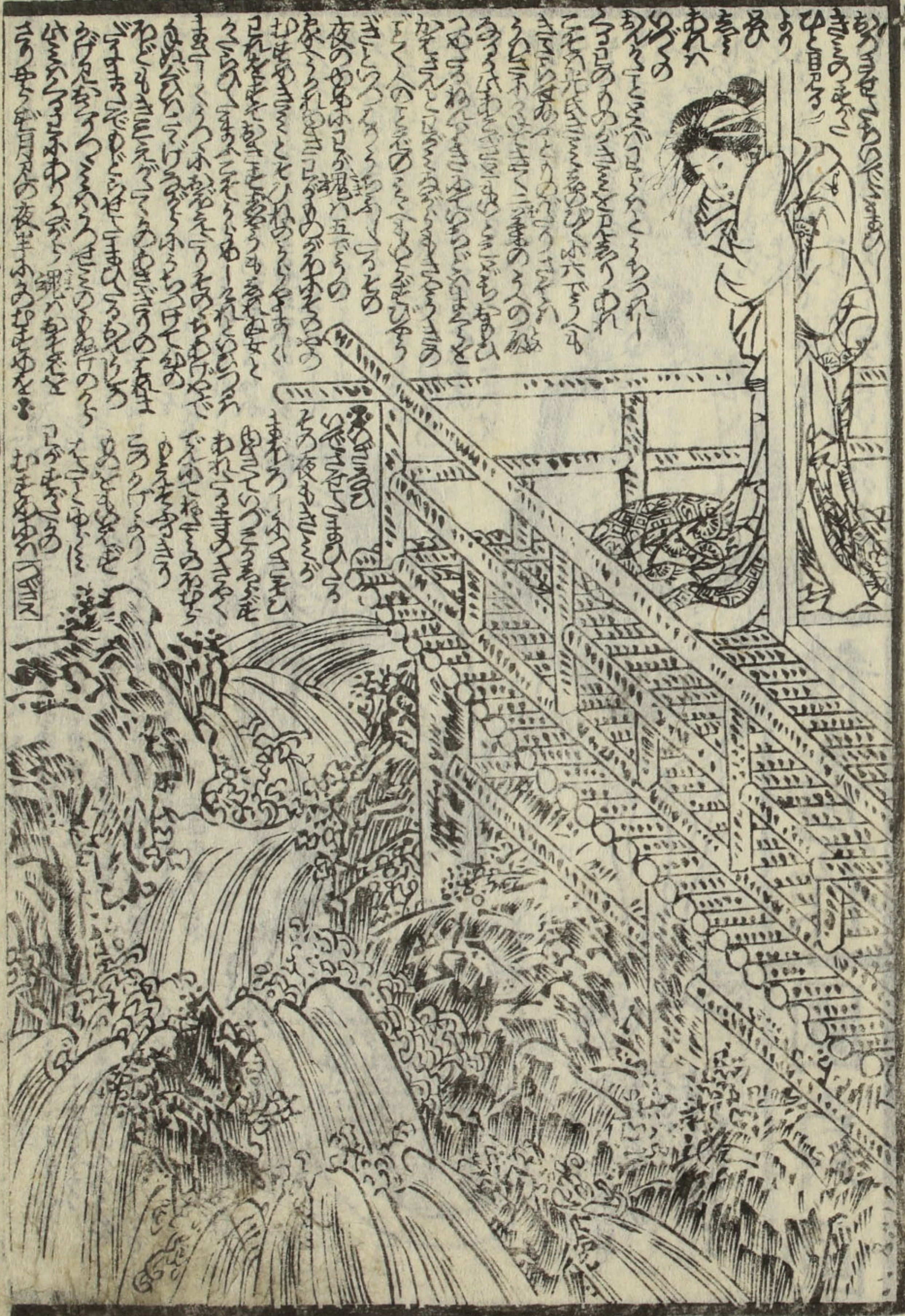
あつらひ
 いそひ
 あつらひ
 せきはむ花を
 袖よれん

義勝の
 女
 船舟
 未摘花
 止



朧月の夜忍びて船舟乃琴を聞

光氏十八歳



Vertical Japanese text in the upper left corner of the page, likely a title or introductory text.

Vertical Japanese text in the middle left section, positioned between the woman and the waterfall.

Vertical Japanese text in the lower left section, located at the base of the waterfall.

Small vertical text on the far left edge of the page.



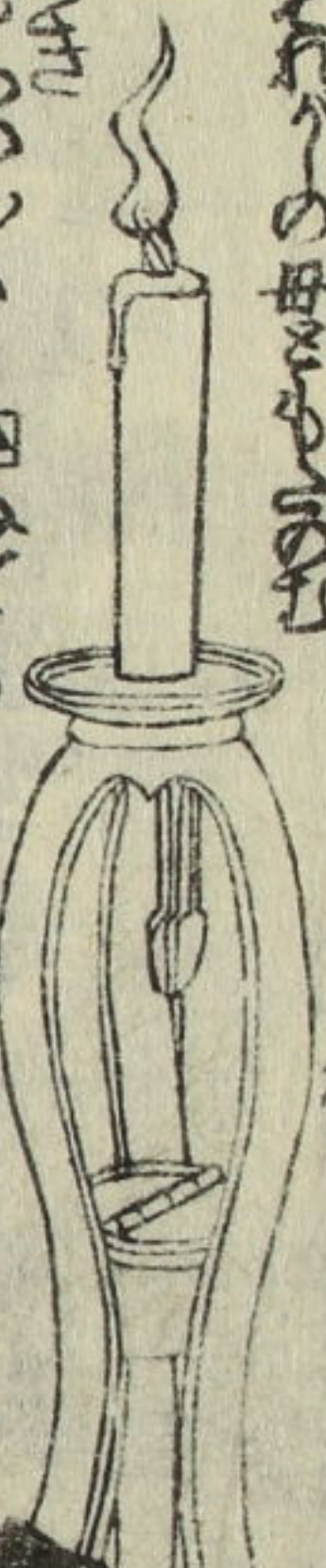
Vertical Japanese text in the upper right corner of the page, positioned above the standing woman.

Vertical Japanese text in the lower right section, located near the kneeling figure.

Small vertical text on the right edge of the page.

Small vertical text at the bottom right corner of the page.

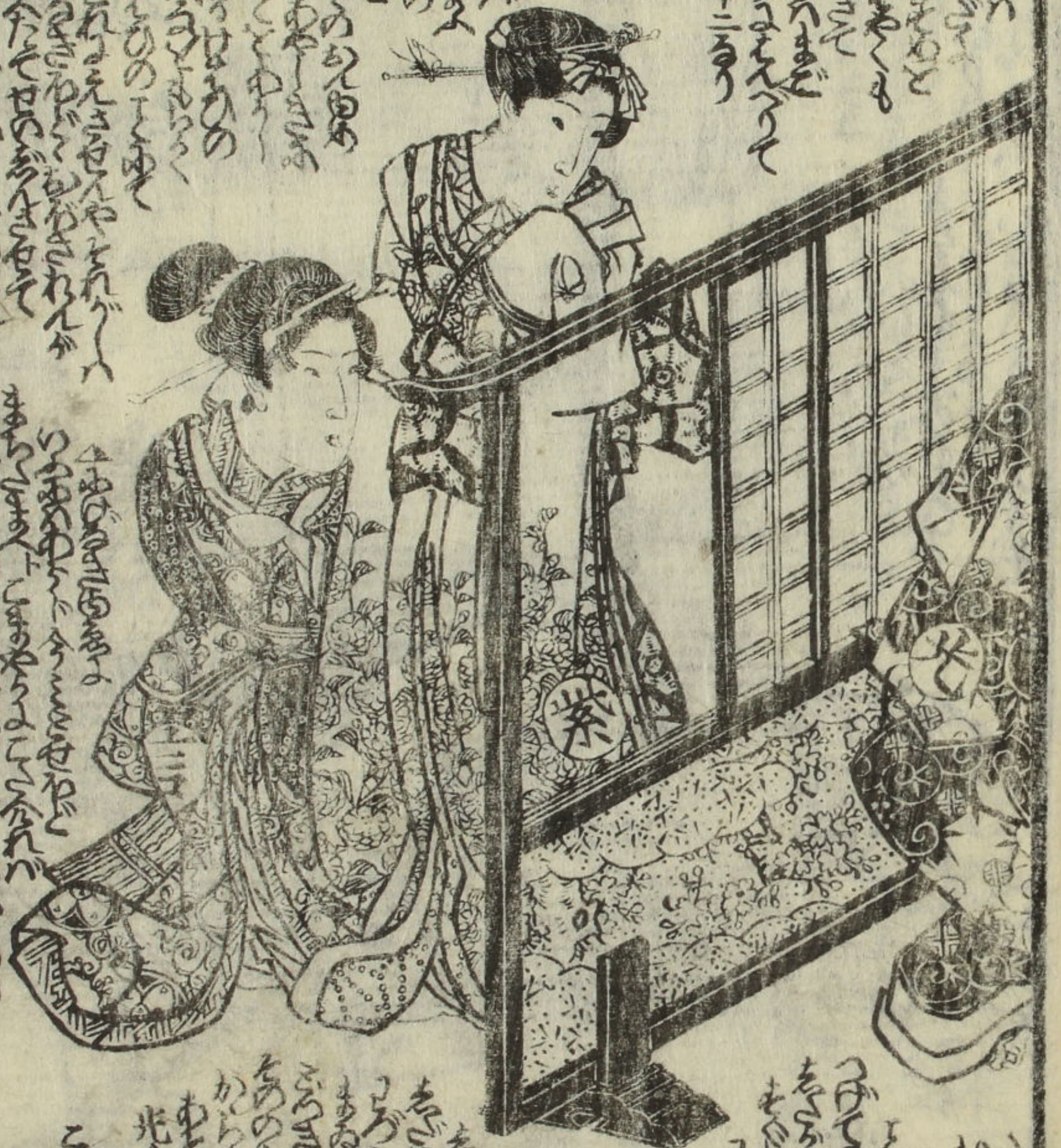
Handwritten text in a cursive script, likely a transcription of a Japanese text, located at the top of the right page.



Handwritten text in a cursive script, located in the middle section of the right page, surrounding the lamp illustration.

Handwritten text in a cursive script, located at the bottom of the right page.

Handwritten text in a cursive script, located at the top of the left page.



Handwritten text in a cursive script, located in the middle section of the left page, surrounding the main illustration.

Handwritten text in a cursive script, located at the bottom of the left page.

Handwritten Japanese text in vertical columns at the top of the right page, likely serving as a title or introductory text for the illustration below.



Handwritten Japanese text at the bottom of the right page, possibly a dialogue or commentary related to the scene depicted in the illustration.

Handwritten Japanese text in vertical columns at the top of the left page, providing context or a title for the illustration.



Handwritten Japanese text at the bottom of the left page, likely a dialogue or commentary related to the scene depicted in the illustration.

これにわたりて光武のころもこの書はあつて
これよりあつたものもあつたが、この書はあつて
とあらはれぬ中にもあつたものもあつた

種彦作 國貞画

これにわたりて光武のころもこの書はあつて
これよりあつたものもあつたが、この書はあつて
とあらはれぬ中にもあつたものもあつた



筆耕 千形道友
坂本氏

能世芳州集 全二冊

用 能世芳州集 全二冊 用 能世芳州集 全二冊 用 能世芳州集 全二冊

能世散葉集 全二冊

用 能世散葉集 全二冊 用 能世散葉集 全二冊 用 能世散葉集 全二冊

能世今四歌仙 全一冊

用 能世今四歌仙 全一冊 用 能世今四歌仙 全一冊 用 能世今四歌仙 全一冊

能世今人附合集 全四冊

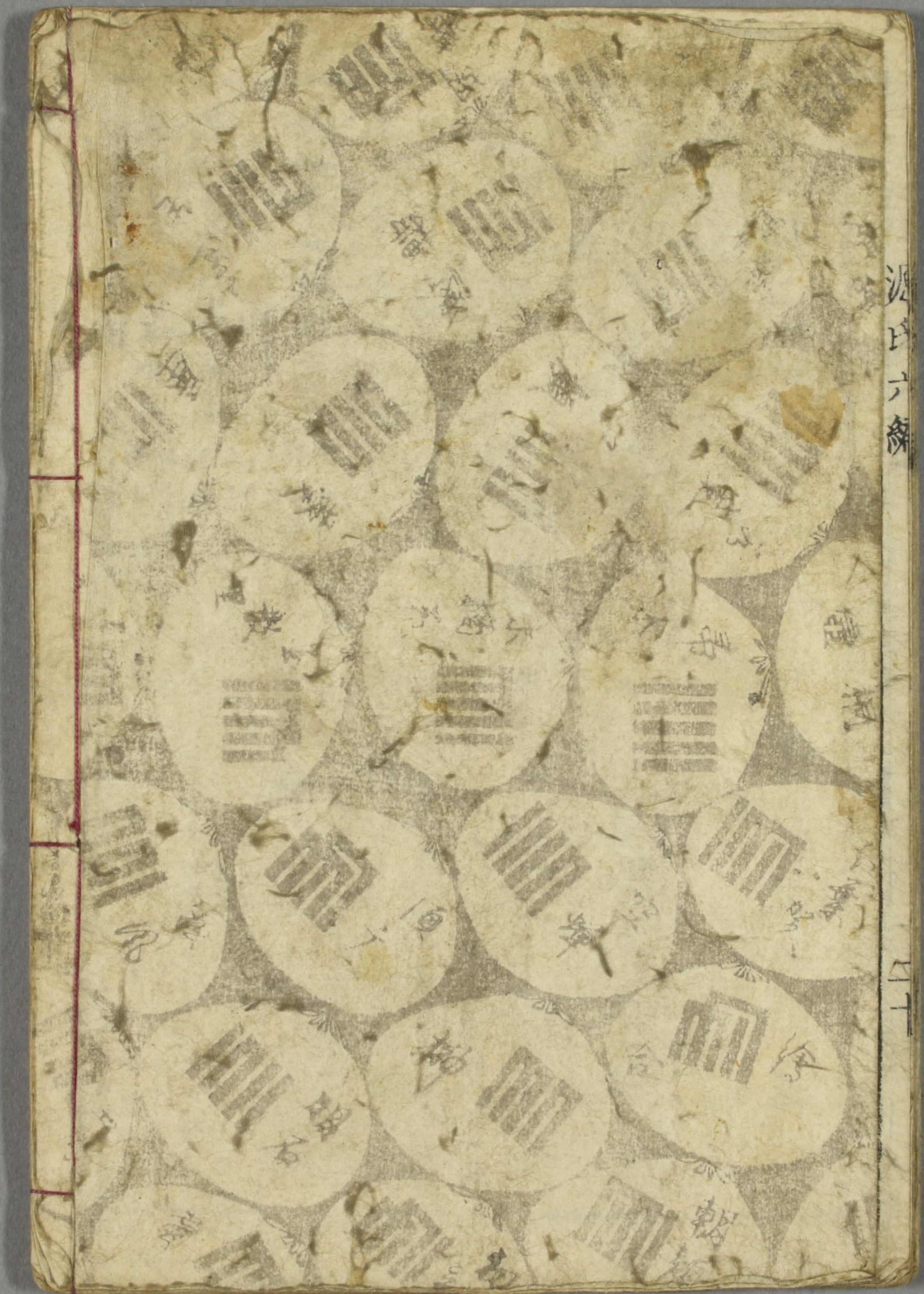
用 能世今人附合集 全四冊 用 能世今人附合集 全四冊 用 能世今人附合集 全四冊

能世今人散句集 全二冊

用 能世今人散句集 全二冊 用 能世今人散句集 全二冊 用 能世今人散句集 全二冊

能世今人散句集 全二冊 素貞年早春出版

書肆 江戸通油町 仙鶴堂 勢屋本古書問の藏



源氏六線

二一