

一陽齋豊国画



赤松

譚

發行 錦重堂

下

へ 13
3736
14

忠

義

教

識

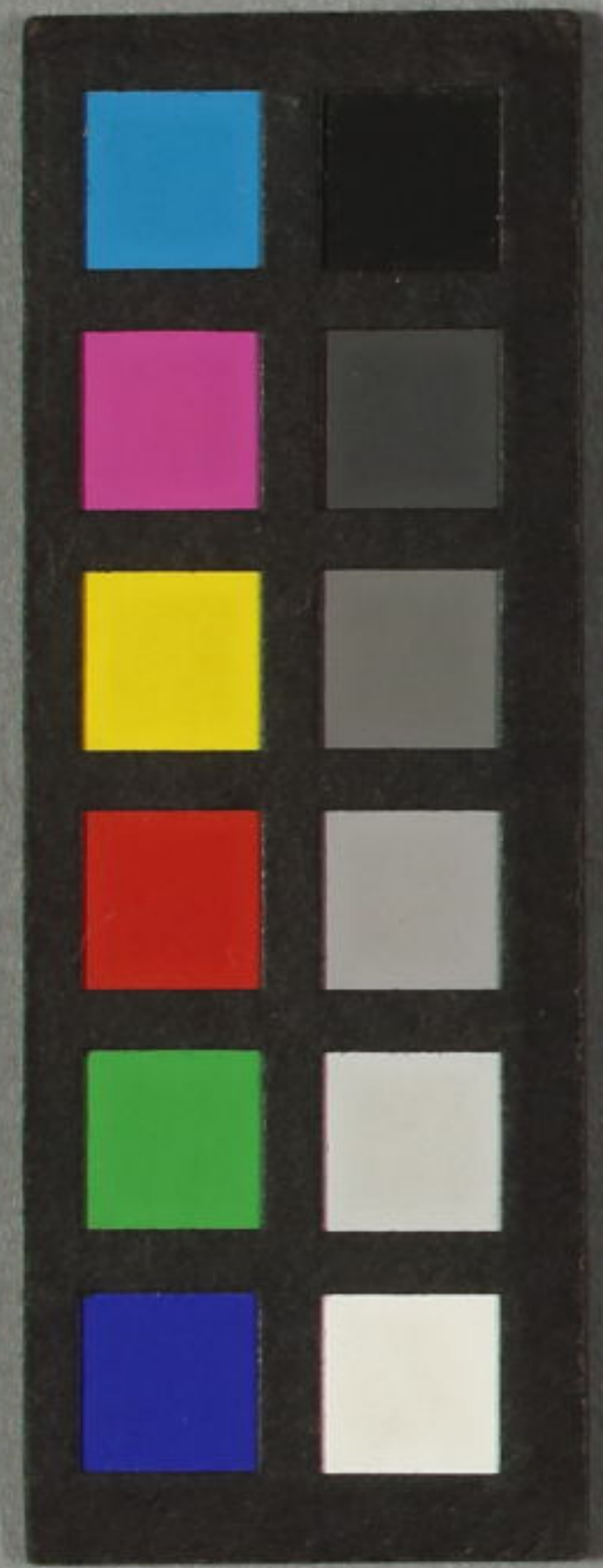
壬子

初春

如淵外史作



へ 13
3736
13





忠チカ

義チカ

教チカ

識チカ

壬子

初春

如淵外史作

~ 13
3736
13



門 へ 13
 3736
 13

忠義

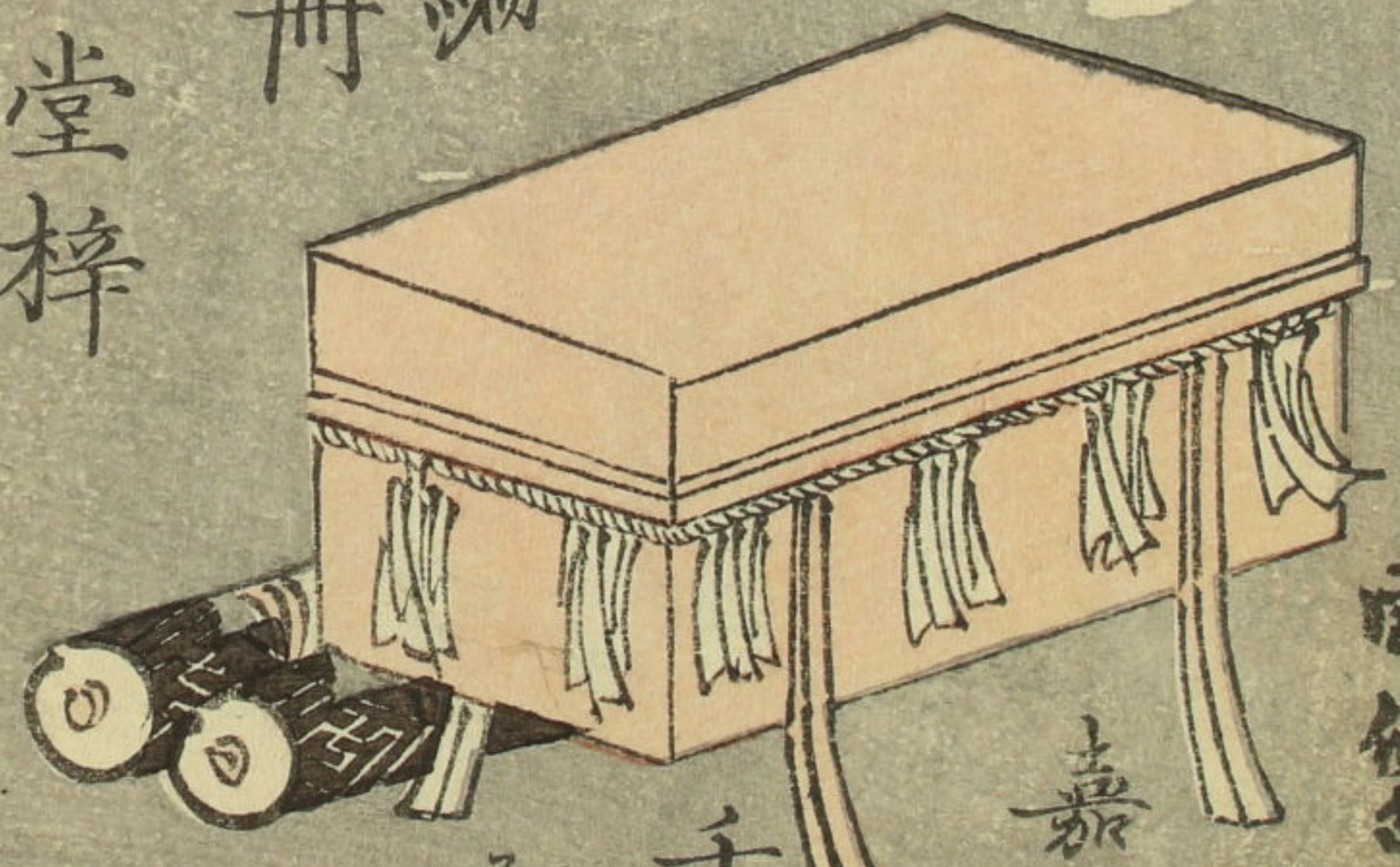
赤松

譚

如淵外史作
 一陽齋豊國画

七編
 上冊

錦重堂梓



同個忠

嘉永
 壬子
 孟
 限

一

花も香もまた赤松の緑年々に茂合二えご三枝四
 枝五えごいけり越て六えごの後まご七えごの枝交を巻れ
 内ふ後いけりやげかの竹取の翁が娘よりいふも孝行赫奕
 たる深層玉をことと共は白銅鏡武將續目の壘の室
 人間ならぬ女け手よりえりて元ふかき不思議さる又都の
 吉原の錦の旗怪しい女小盗は人間万事世中のため一定
 おるぬる夫うゝやぐ伊勢のいづきの一緒をこふ始に解をめつ

嘉永五年壬子初春

如淵外史題

鏡齋女

御妻



いそがし乃まはとの鏡

富士大菩薩の化身

うらぶし

月影

三河國赤坂郷

遊君 弥勒

よそ かる 浪

ぬき

袖か

ころく



いそがし乃まはとの鏡

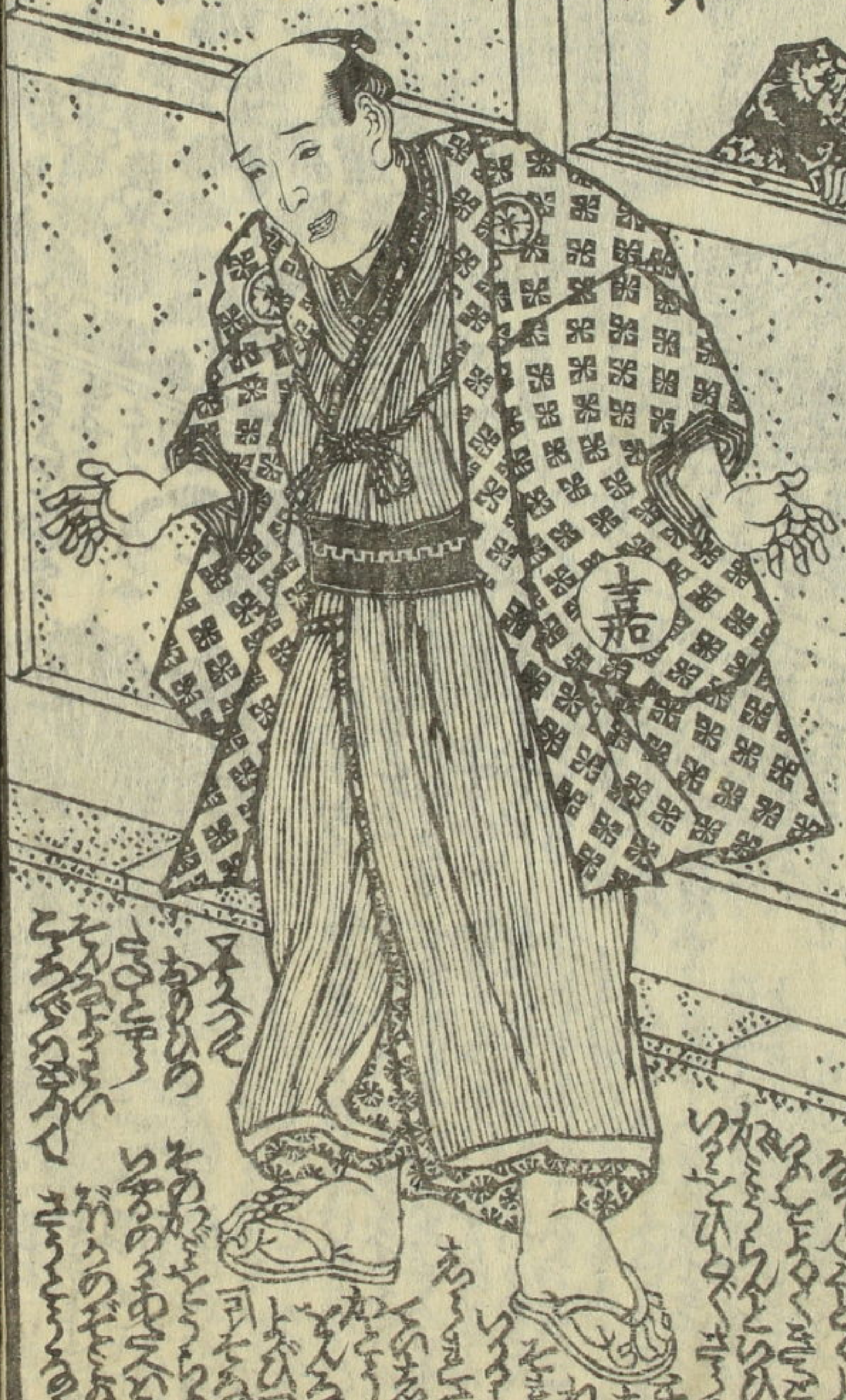
あめ

さめ





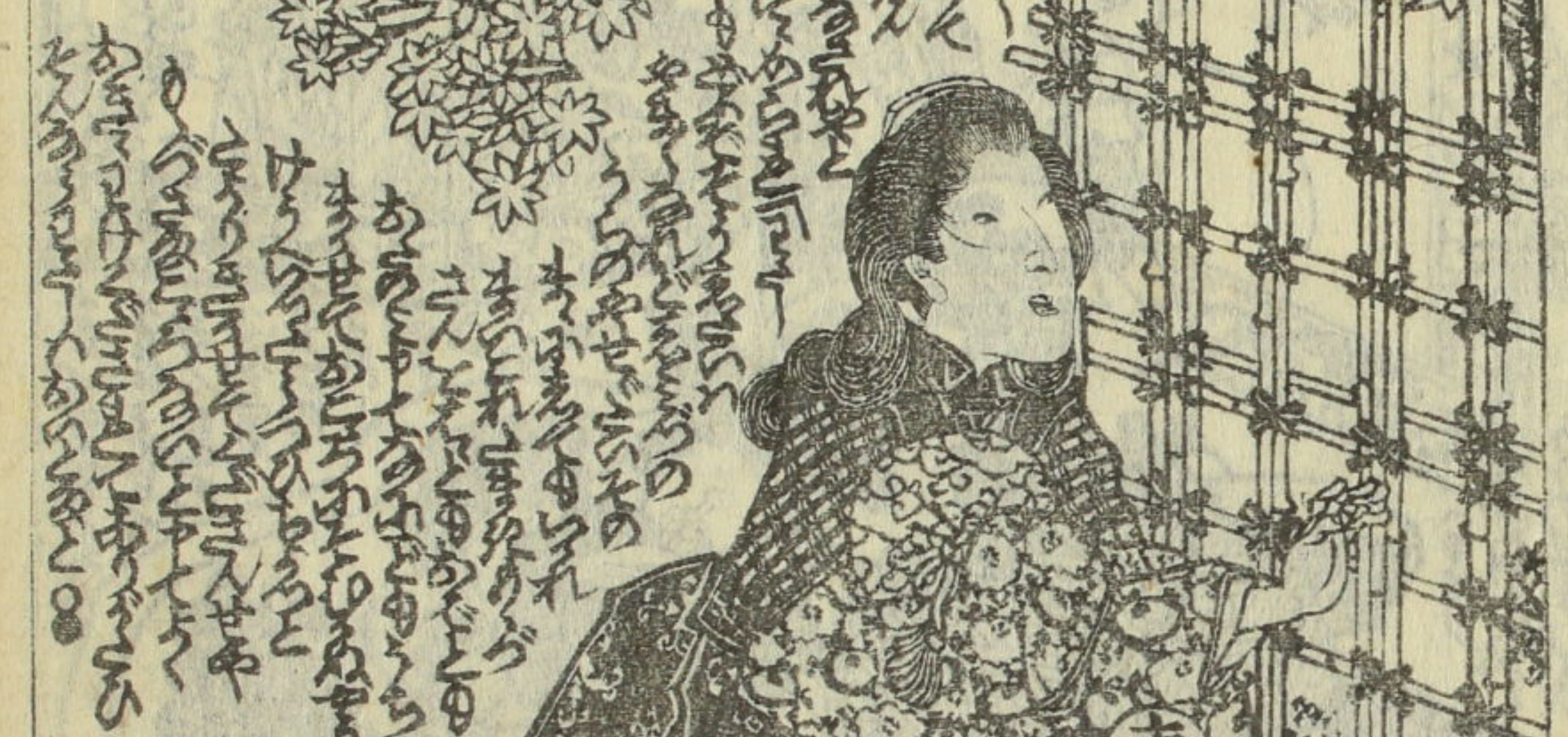
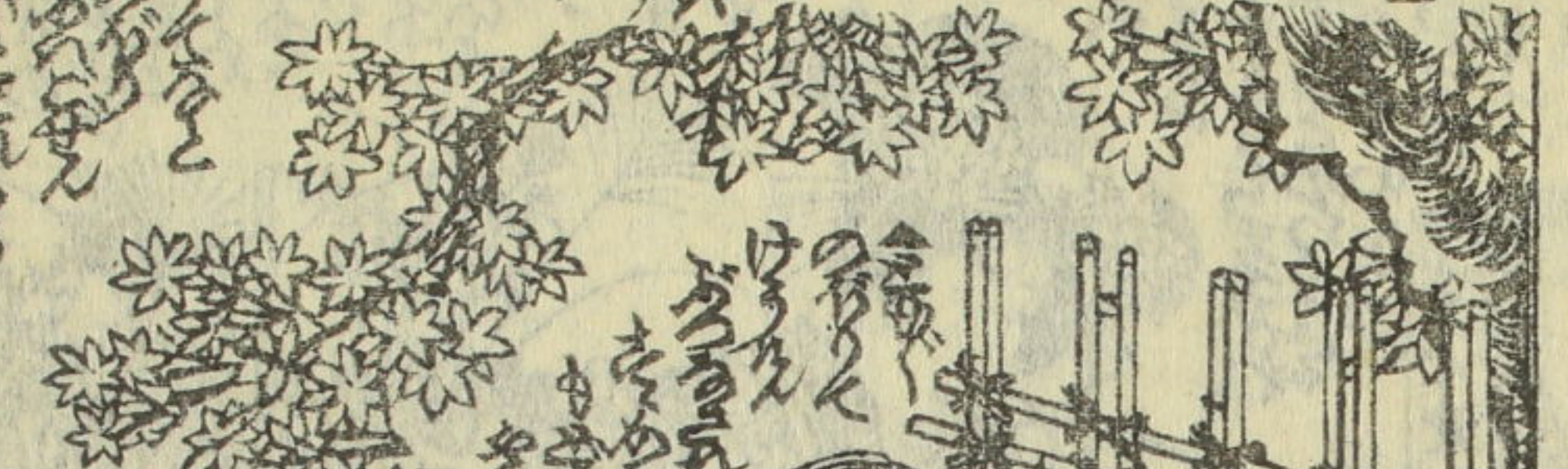
Vertical text columns to the left of the window scene, including characters like 赤松 and 七編.



Vertical text columns to the right of the man, including characters like 赤松 and 七編.

Vertical text columns at the bottom of the man's scene, including characters like 赤松 and 七編.

Vertical text columns at the top of the left page, including characters like 赤松 and 七編.



Vertical text columns surrounding the woman's scene, including characters like 赤松 and 七編.

Small vertical text on the left edge of the page.

Small vertical text on the left edge of the page.

如淵作
豐國画



奥奉公 二編 娘一代成人 双六

万亭應賀作
一陽齋豐國画

奥奉公 出世 双六

万亭應賀作
一陽齋豐國画

武藝立身 館 双六

万亭應賀作
一陽齋豐國画

日蓮記 旭衣 三編

万亭應賀作
一陽齋豐國画

神代藻 盧草 二編

万亭應賀作
一陽齋豐國画

重榮御 江戸繪圖

奉書四枚半續





一陽齋豊国画



赤

松

譚 のり

發行

錦重堂

下

へ 13
3736
14



門 へ 13
 3736
 14

名義の

かき

如月

不化

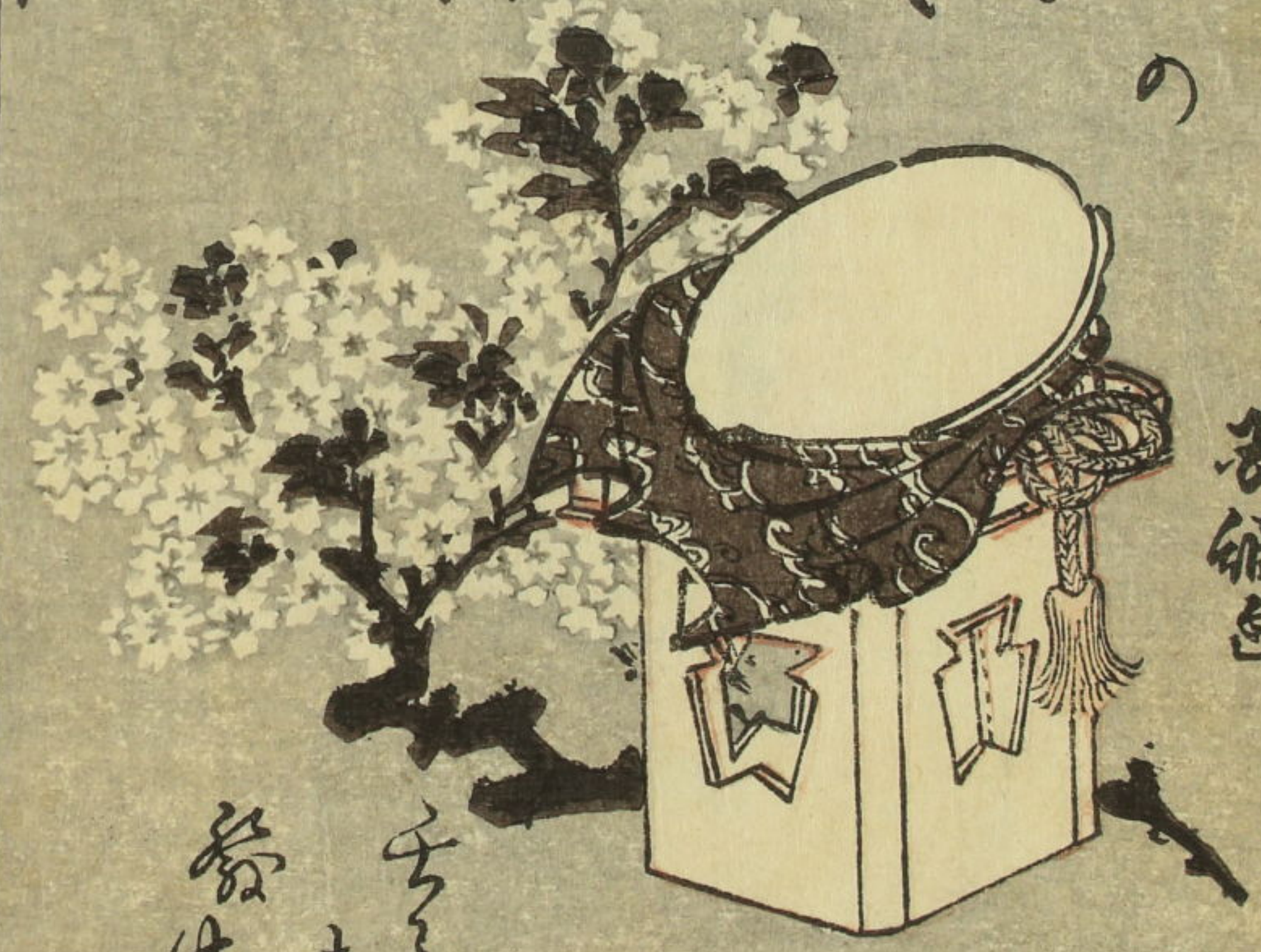
七編

下冊

曲意圖画

人形可

上品居人



玉綱包

綴布
 子子

三



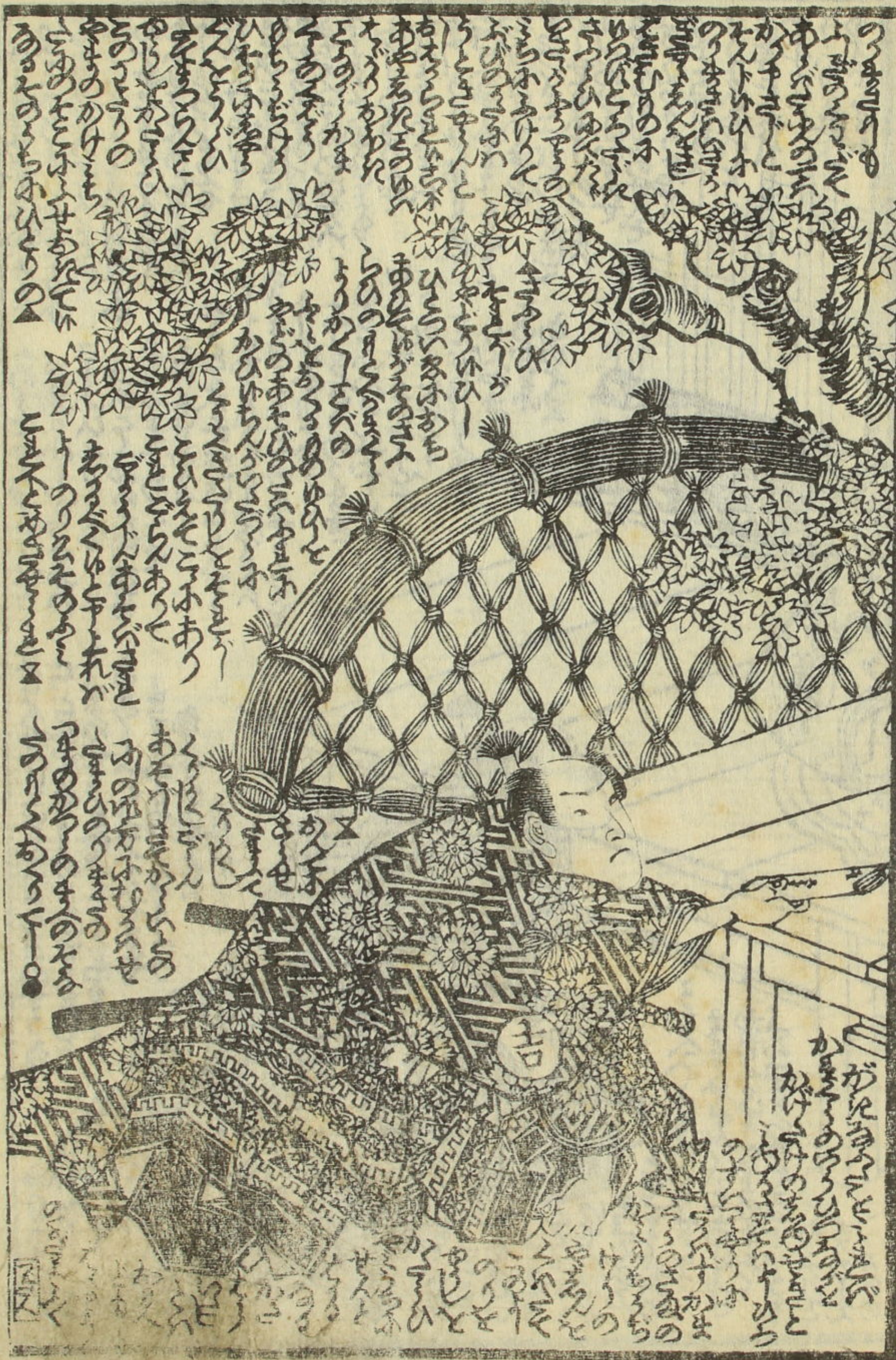
Vertical columns of handwritten Japanese text, likely a commentary or a list of items, surrounding the central illustration.



Vertical columns of handwritten Japanese text, likely a commentary or a list of items, surrounding the central illustration.



Small vertical text on the left margin of the bottom page.



154 148E

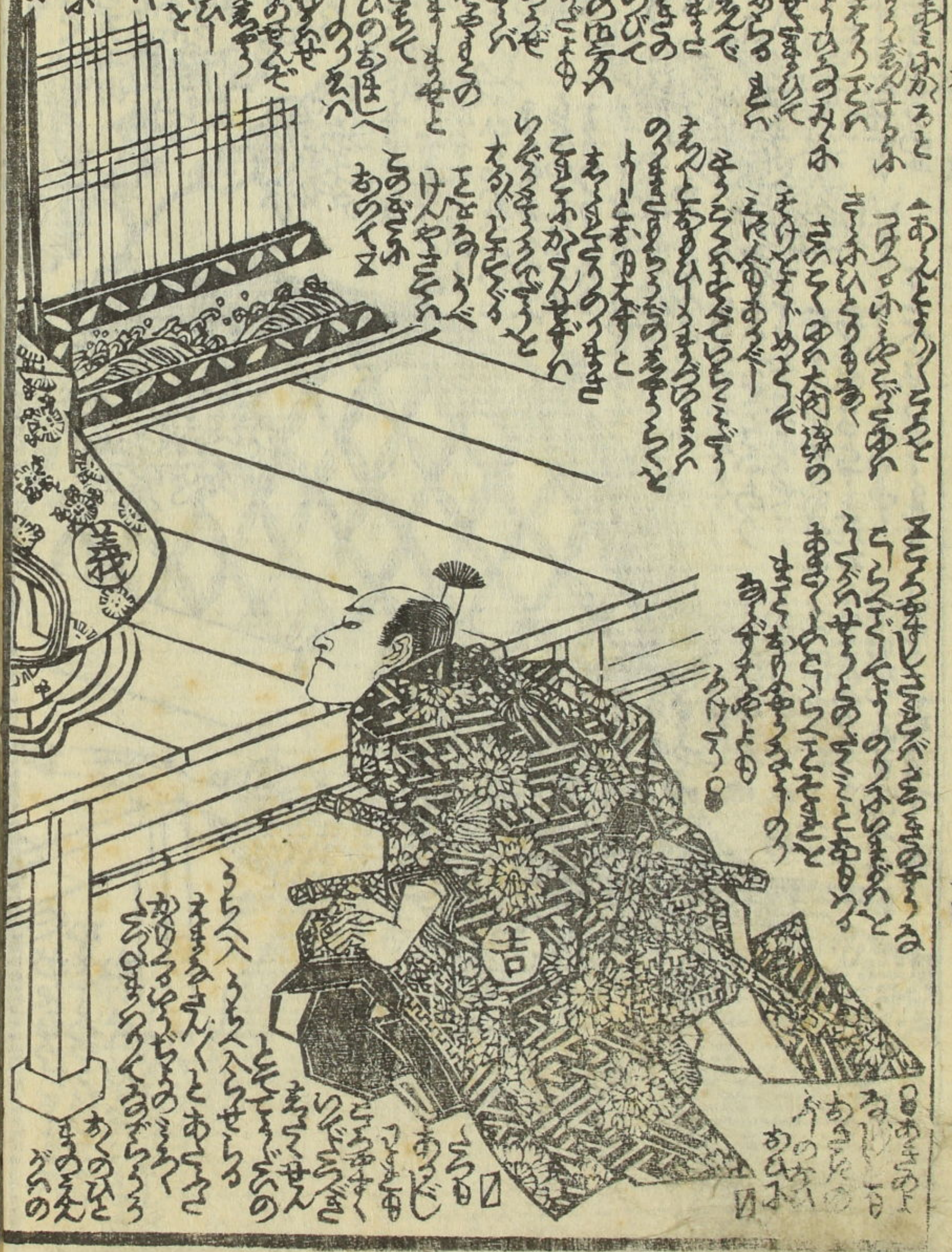
107



155 149E

108

Handwritten text in a cursive style, likely a play script or commentary, surrounding the illustration on the right page. The text is arranged in vertical columns, with some characters enclosed in small boxes.



Handwritten text in a cursive style, likely a play script or commentary, surrounding the illustration on the left page. The text is arranged in vertical columns, with some characters enclosed in small boxes.





Vertical text columns on the right side of the illustration, likely providing commentary or a narrative related to the scene.

Vertical text columns in the middle section of the illustration, continuing the commentary or narrative.

Vertical text columns at the bottom of the illustration, possibly concluding the commentary or narrative.



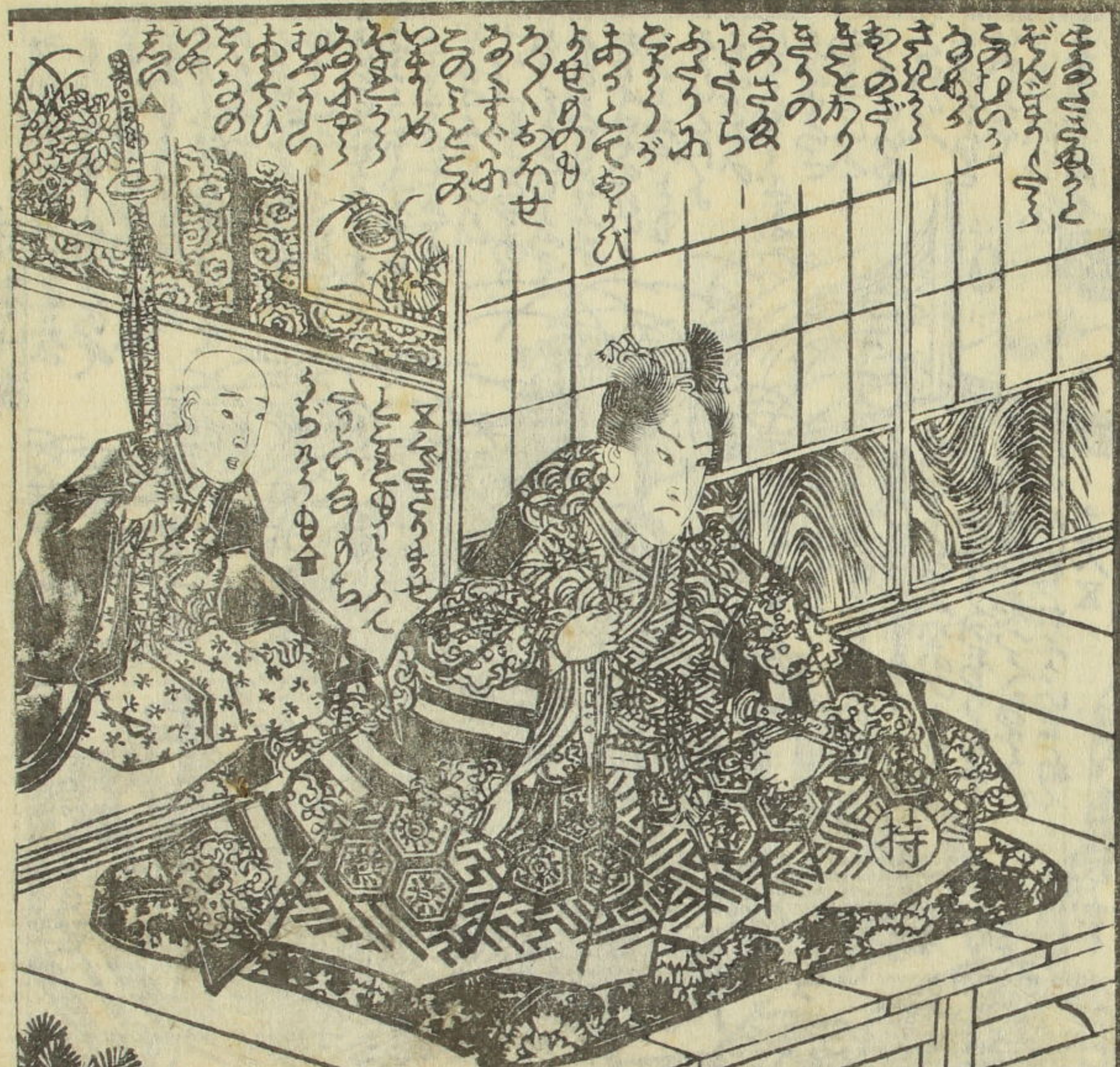
Vertical text columns on the right side of the illustration, likely providing commentary or a narrative related to the scene.

Vertical text columns at the bottom of the illustration, possibly concluding the commentary or narrative.

Handwritten text in the upper right section of the right page, written in vertical columns.



Handwritten text in the lower right section of the right page, written in vertical columns.



Handwritten text in the lower left section of the left page, written in vertical columns.

Handwritten text in the upper left section of the left page, written in vertical columns.

