

十二編下

~ 13
3730
24

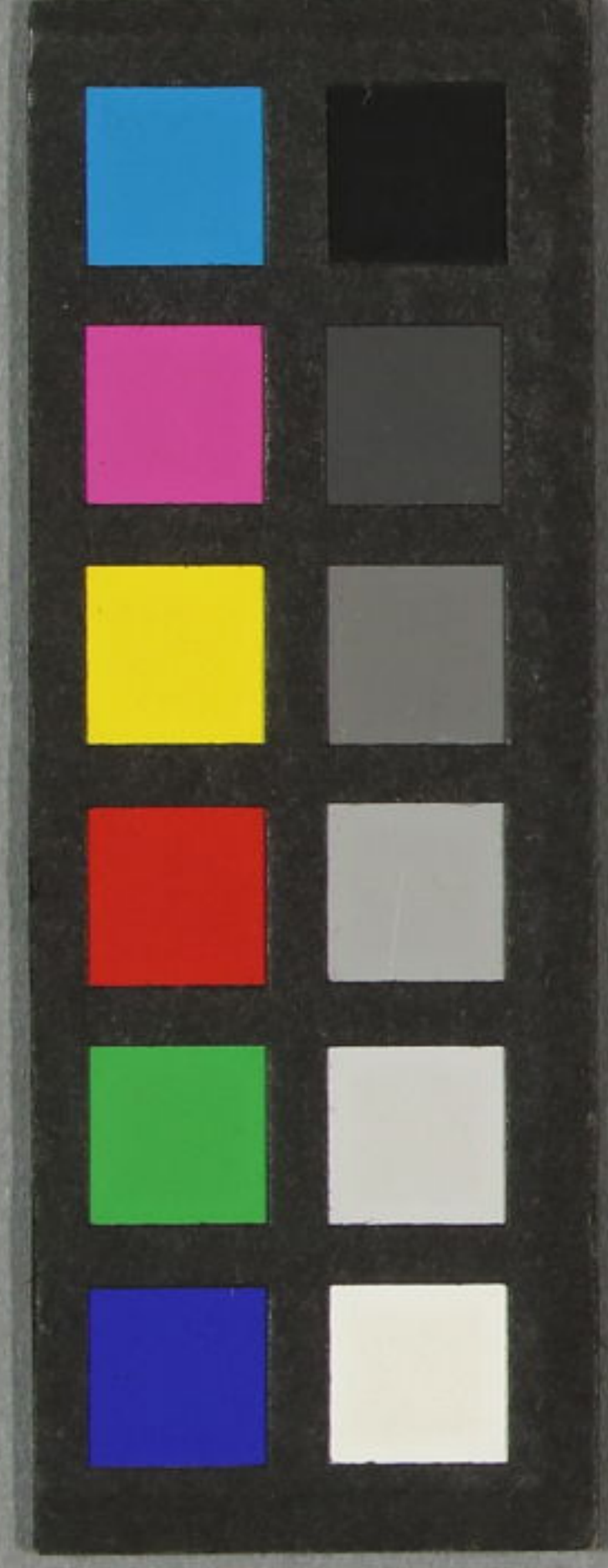


新編曲多段圖

~ 13
3730
23

Gōkan: (No. 002)
Hina no Omokage.
Part 2. Book 12B-23





新類曲書以同金

Gōkan: (No. 002)
Hina no Omokage.
Part 2. Book 12B-22

十
~ 13
3730
23



門へ13
3730
巻 23

さゆいり

錦昇堂版

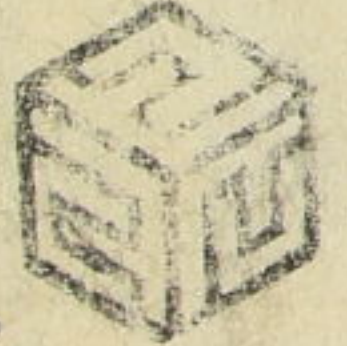


五 一 五

蹴鞠の段の上若菜の眼目なるべし先譯の鎌倉幕府の手毬の
會と思寄稚氣不書綴しをひききや再同案の著述を云云抑往昔
の鞠興の當代の追羽根といふ物に似たるやうなものは今般の比と腹稿
と既小領域水許傳小宋徽宗の迷と後鳥羽天皇の御衝羽根
に引かれ復用人の事舊ぬま本編の只原文はまを俗調に改
其餘も七八分新意を出さぬあるべからざる四本懸の窮屈なり
猶骨の折眼目小留るべきありも亦借夕霧と柏木の同車
は糸の其儘摺るべきと牛車のうらふ騎換させても馬の後脚
賞人もあるやうに嗟朋友の作を續るが故人の後馬ふのらぬ
瘦我慢勞して功なき著編ふこそ

于時嘉永七年嘉平月中旬脱稿
同八年孟原新刊

笠亭仙果序





慈照院殿
御在世のむじ
潜て柏荷山小
御参詣ありし時
鐘礼の雨小遇
少女の雨具と

あられ
瑞雲の山は
ひもは
なほ
よも
おひ
そあ
てき

借さるるふこ
三津世姫柏之助の
密通の語あつた
新設の
柏木の巻
本田小分解

東山義政公

賤女
田中の折穂

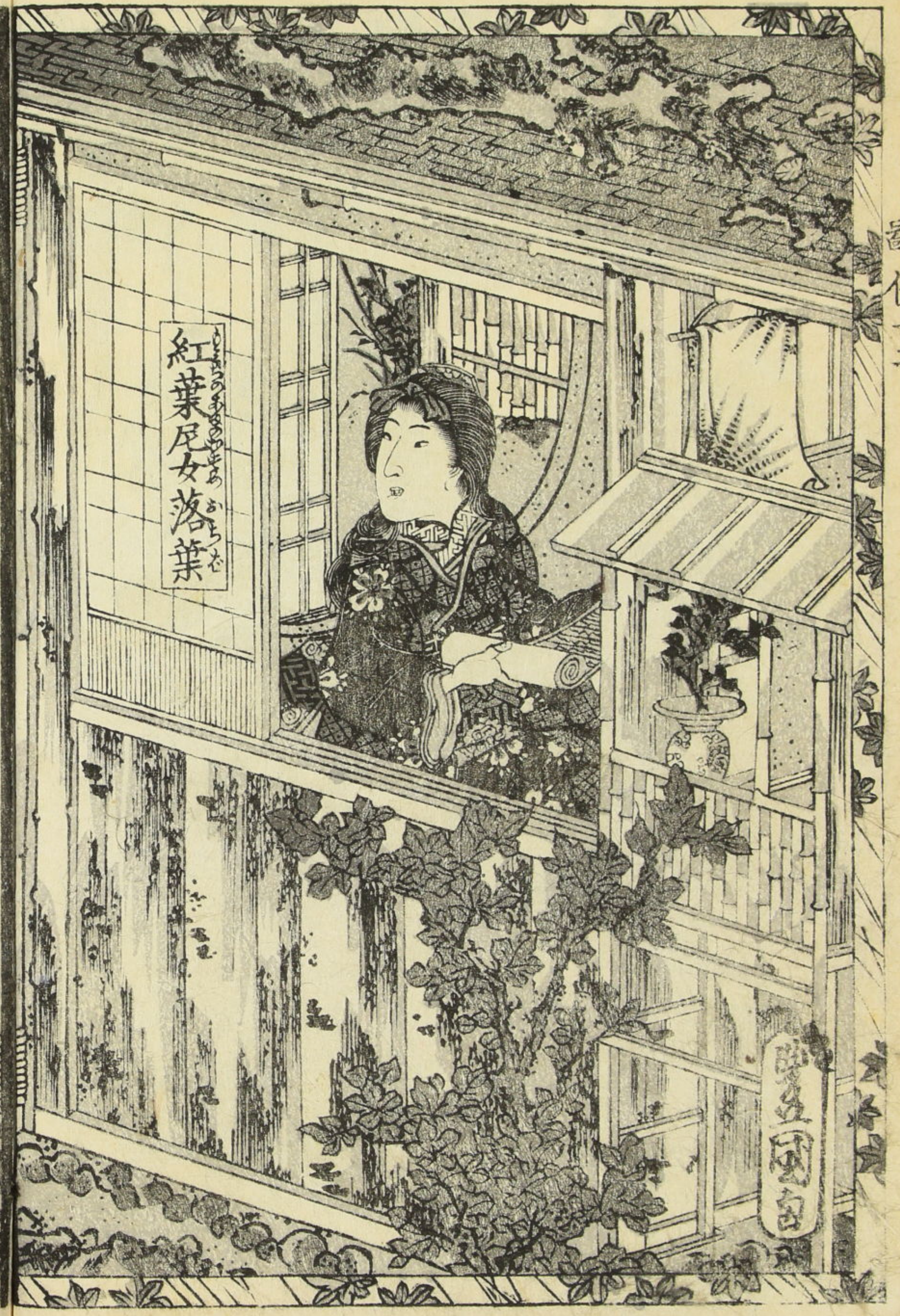
豊の園



熙圓
大僧正

西山入道
御所初冬
急雨小止
七本松
尼が巻小

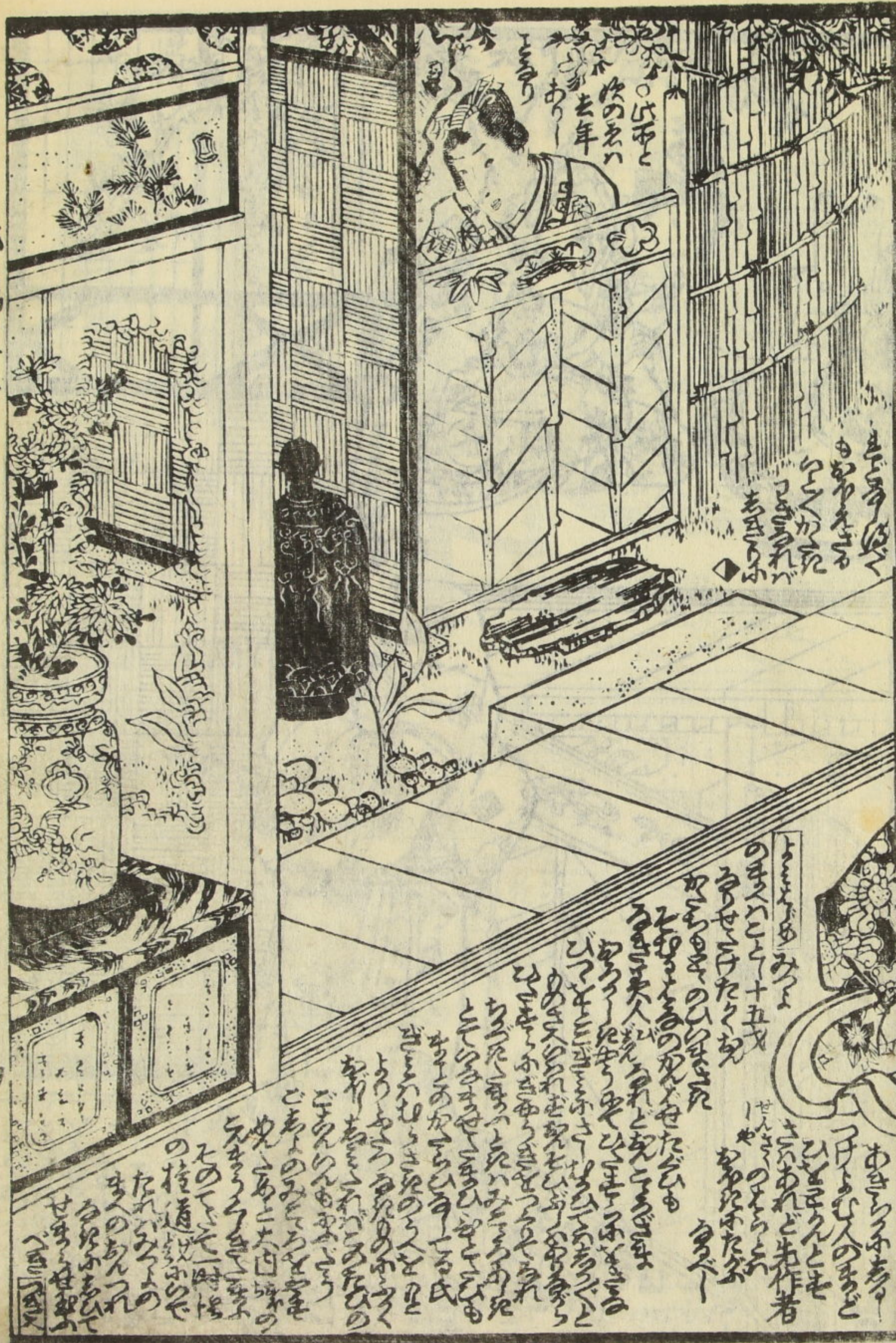
柳葉宿
あそび
上在
正



紅葉尼女落葉

西園

寄信十二



○はち
のち
去年
あ

○はち
のち
去年
あ

○はち
のち
去年
あ

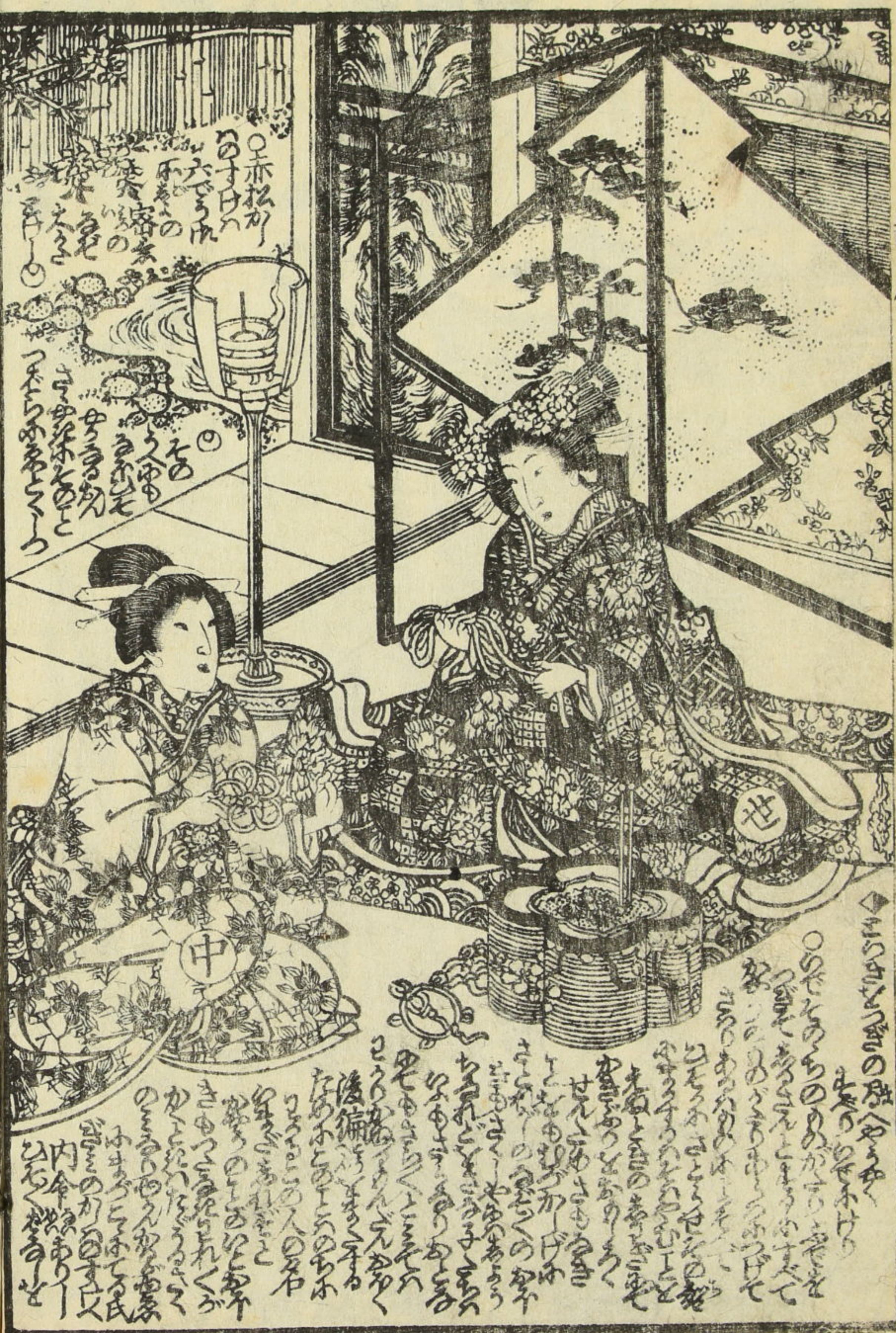
○はち
のち
去年
あ

○はち
のち
去年
あ

○はち
のち
去年
あ

○はち
のち
去年
あ

○はち
のち
去年
あ



○赤松
のち
去年
あ

○赤松
のち
去年
あ

○赤松
のち
去年
あ

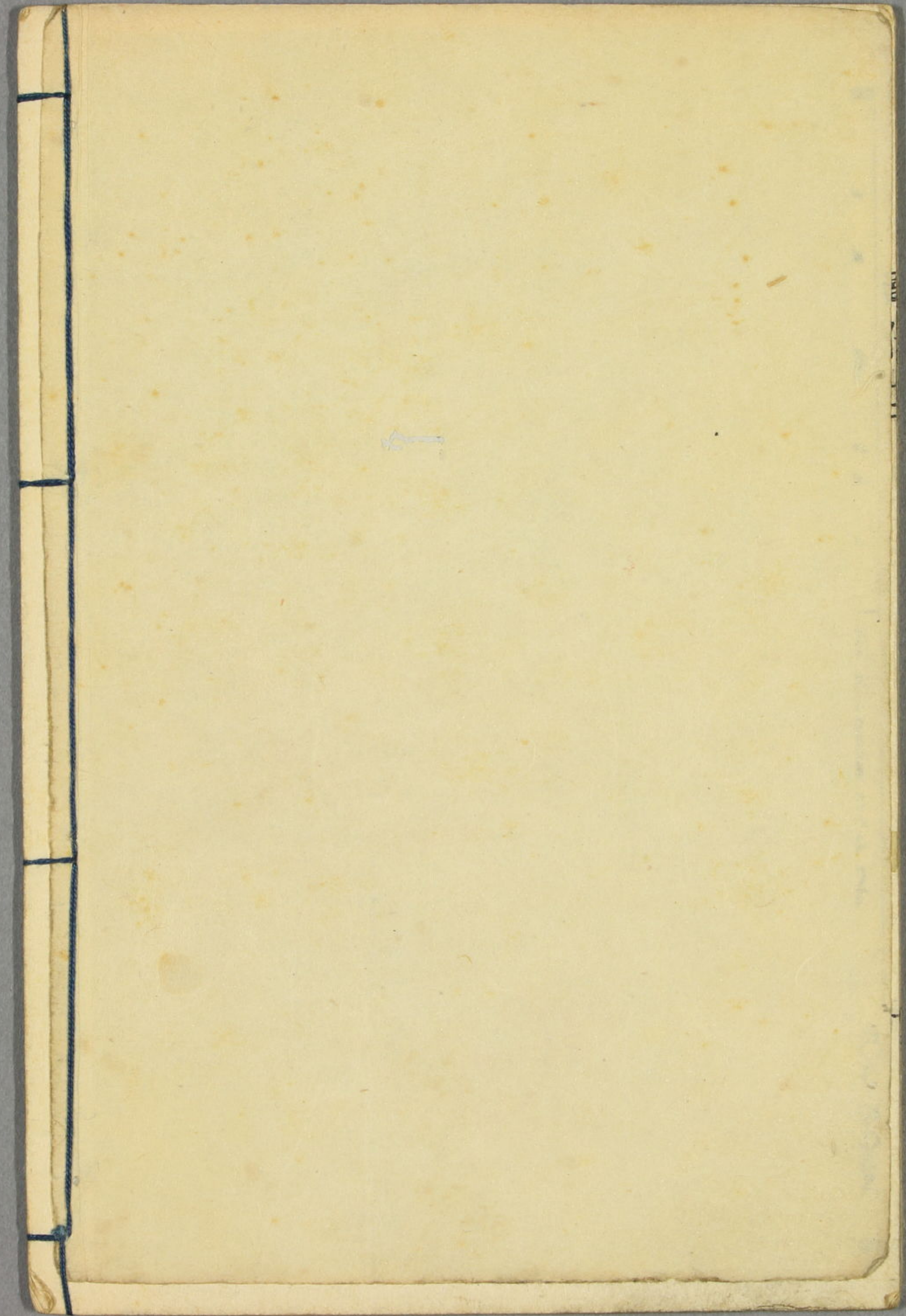
○赤松
のち
去年
あ

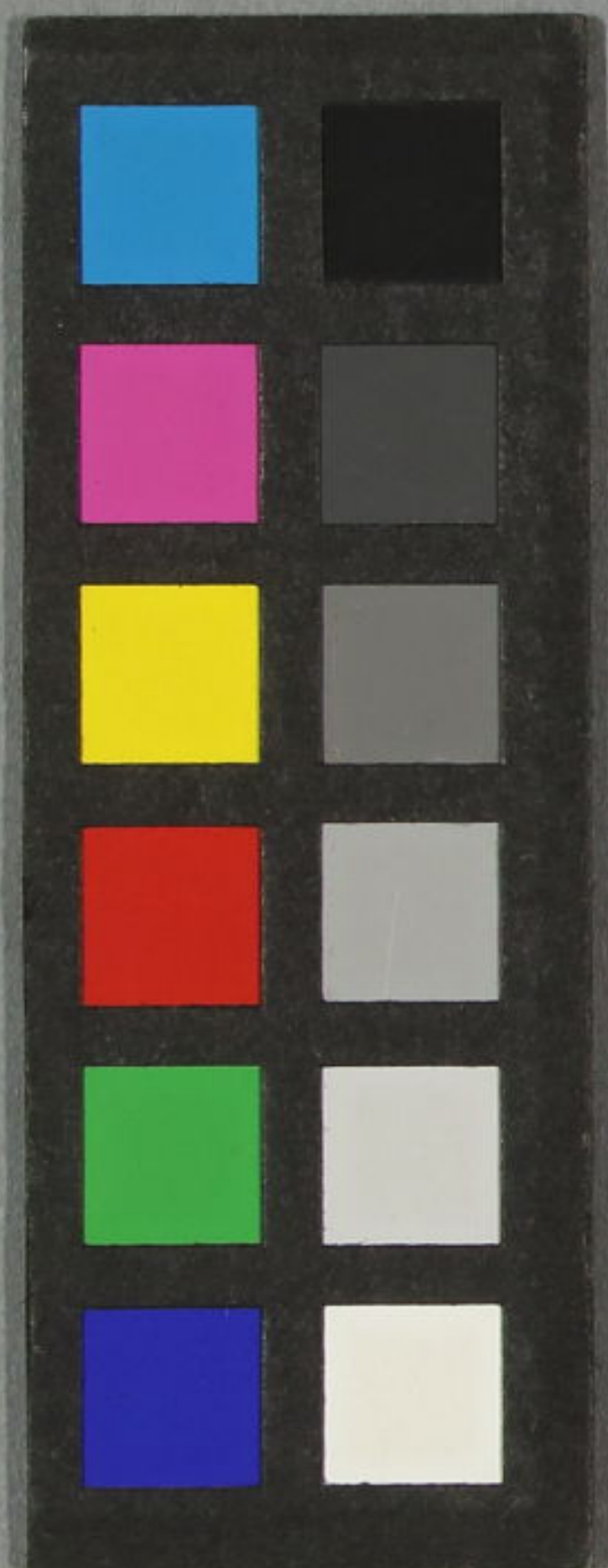
○赤松
のち
去年
あ

○赤松
のち
去年
あ

○赤松
のち
去年
あ

○赤松
のち
去年
あ





山果作

十二編下

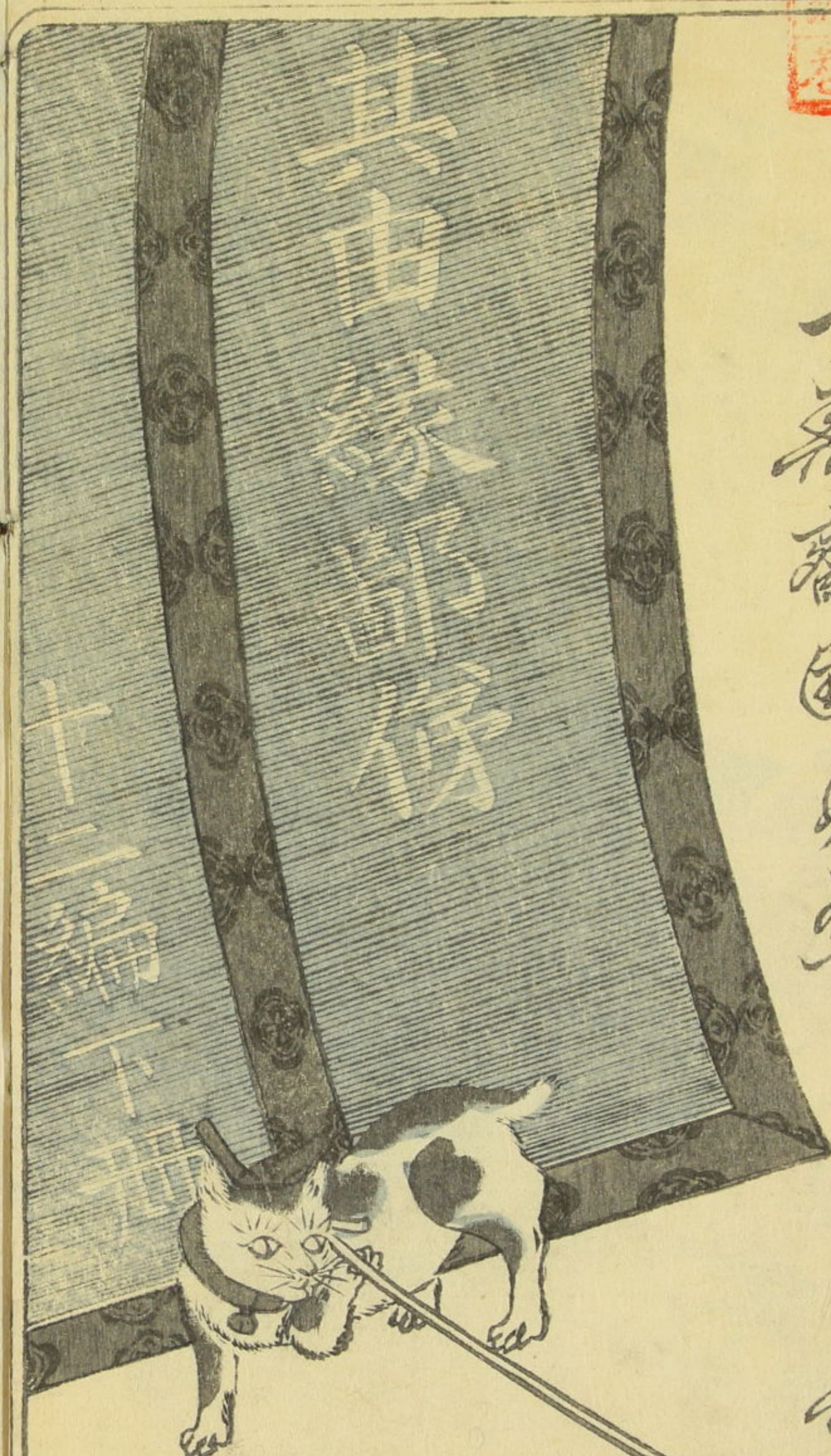
~ 13
3730
24





部第十一

門へ13
3730
巻 24



美多仙果作
一壽齋國貞画

五比
壽齋
板



Vertical Japanese text columns on the top left of the page, including the page number '第十一'.

Vertical Japanese text columns surrounding the illustration, including the characters '兵' and '助' on the figures.



Vertical Japanese text columns on the top right of the page.

Vertical Japanese text columns surrounding the illustration, including the character '柏' on the figure.



How do you like the
appearance of the
dog?
The drum is also
very nice.
The woman's
kimono is beautiful.
The dog is running
very fast.
The drum is very
loud.
The woman is very
beautiful.
The dog is very
cute.
The drum is very
interesting.
The woman is very
kind.
The dog is very
playful.
The drum is very
important.
The woman is very
happy.
The dog is very
friendly.
The drum is very
useful.
The woman is very
graceful.
The dog is very
loyal.
The drum is very
powerful.
The woman is very
elegant.
The dog is very
smart.
The drum is very
strong.



How do you like the
appearance of the
women?
The kimono is very
beautiful.
The women are very
kind.
The stage is very
interesting.
The background is
very nice.
The women are very
happy.
The kimono is very
elegant.
The women are very
graceful.
The stage is very
powerful.
The background is
very strong.
The women are very
loyal.
The kimono is very
friendly.
The women are very
smart.
The stage is very
useful.
The background is
very important.
The women are very
elegant.
The kimono is very
powerful.
The women are very
loyal.
The stage is very
friendly.
The background is
very smart.
The women are very
useful.
The kimono is very
important.
The women are very
elegant.
The stage is very
powerful.
The background is
very strong.

〇



Madri
The woman on the left
is seated in a patterned kimono.
The woman on the right
is kneeling and holding a bowl.
The woman in the center
is standing and holding a tray.
The woman on the far right
is kneeling and holding a bowl.
The woman on the far left
is standing and holding a tray.

The woman on the left is seated in a patterned kimono. The woman on the right is kneeling and holding a bowl. The woman in the center is standing and holding a tray. The woman on the far right is kneeling and holding a bowl. The woman on the far left is standing and holding a tray. The woman on the left is seated in a patterned kimono. The woman on the right is kneeling and holding a bowl. The woman in the center is standing and holding a tray. The woman on the far right is kneeling and holding a bowl. The woman on the far left is standing and holding a tray.



The woman on the left is standing in a patterned kimono. The woman on the right is kneeling and holding a bowl. The woman in the center is kneeling and holding a tray. The woman on the far right is kneeling and holding a bowl. The woman on the far left is standing and holding a tray.

The woman on the left is standing in a patterned kimono. The woman on the right is kneeling and holding a bowl. The woman in the center is kneeling and holding a tray. The woman on the far right is kneeling and holding a bowl. The woman on the far left is standing and holding a tray.



山崎のうらやまのうらやま
 とつてのうらやまのうらやま
 山崎のうらやまのうらやま
 とつてのうらやまのうらやま
 山崎のうらやまのうらやま
 とつてのうらやまのうらやま
 山崎のうらやまのうらやま
 とつてのうらやまのうらやま
 山崎のうらやまのうらやま
 とつてのうらやまのうらやま
 山崎のうらやまのうらやま
 とつてのうらやまのうらやま



山崎のうらやまのうらやま
 とつてのうらやまのうらやま
 山崎のうらやまのうらやま
 とつてのうらやまのうらやま
 山崎のうらやまのうらやま
 とつてのうらやまのうらやま
 山崎のうらやまのうらやま
 とつてのうらやまのうらやま
 山崎のうらやまのうらやま
 とつてのうらやまのうらやま
 山崎のうらやまのうらやま
 とつてのうらやまのうらやま

部 第 十二

十七



平弟十二

十二



平弟十二

十二

