

五編上

春の様

非題

~ 13
3706
9





月夜
うさぎのうさぎ

あはれ

圓光

ひらり
かたの
上

あはれ
あはれ

實母殿
十景堂老補筆

柳葉

朝妻

山々亭有人作
極明樓圖頁画

八幡不知

山々亭有人作
錦州樓芳希画

Vertical text columns on the left side of the page, including names and descriptions.

明治四年東京陽春園板日

Handwritten notes in the right margin, including the number '13' in a red box at the top.

藥黃龍八翻木映

味新片脾素

實州地

Vertical text in the left margin of the right page.

Vertical text in the left margin of the right page.

厚化莊萬... 新局九尾傳

室町源... 筆海四國圖書

鼠洞通夜譚... 明燭墨畫通神繪

童謡妙々車... 花封卷五章

薄部幼日記... 大傳太の双紙

十... 萬屋吉藏板

一、... 萬里吉口...

二、... 大...

三、... 外...

四、... 印...

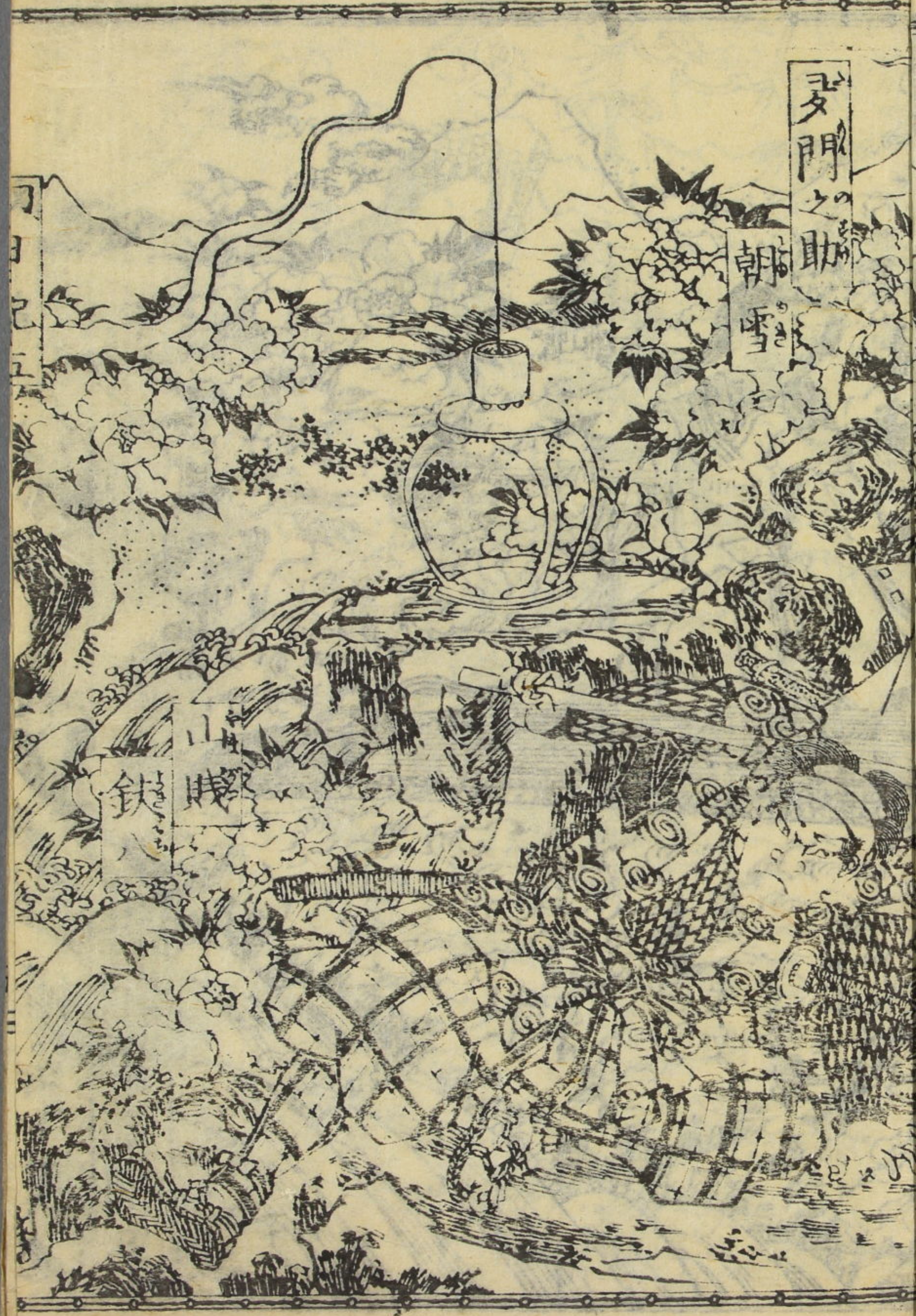
五、... 書...

六、... 海...

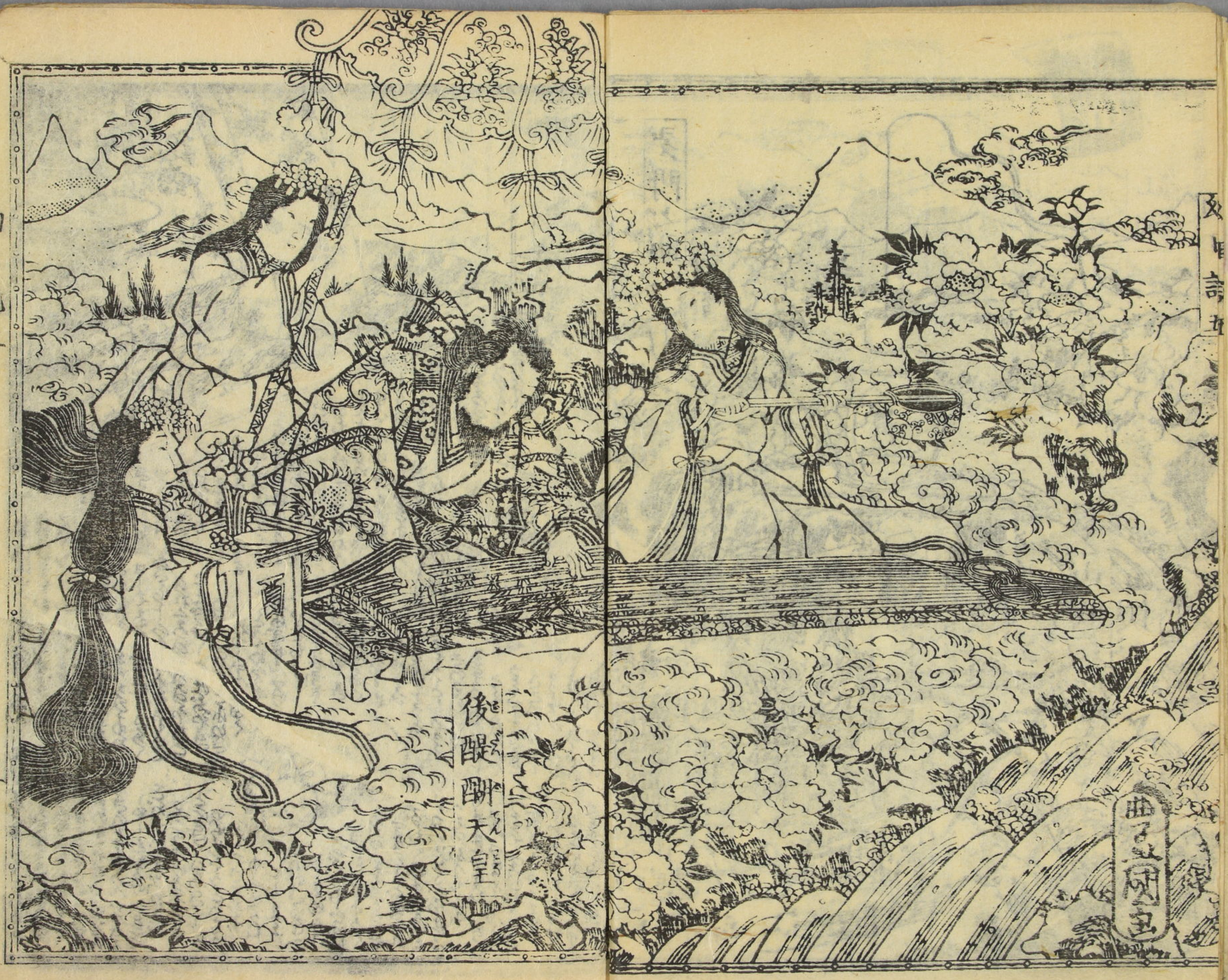
毎歳予が著した冊子の締倉卒の間綴り何れも鹿漏ありぬり
あはれおと給い殊更繁業く這前四編の草稿の早晚よりも最後は
あはれ書賈頼不發兌を急げ予が校訂と往ざる間不賣出しつと
唯しつらち駁さるる間なる果しく誤寫あり落字あり画も又これ
準ひつゝかの粧ひと喚ぶ女の口画と文下ととの顔異あり這ハ口画
りく本とせしむ。僕が画稿ありけるは、製本のうらみ復りく
こも詮術ふし、渡莫らち捐わくは、画様の直さるるに、
そめ、不し、く、閣もせんが、本文の誤り、再刷の日、改正づけ、後、
摺出を巻を、疑ひを解き、あはれ、後、
さへ、青の蕃椒辛くも編一五篇の端、小言、試、筆、を、授、

安政七庚申総陽春 為永春水誌る

鶴田玄湖書



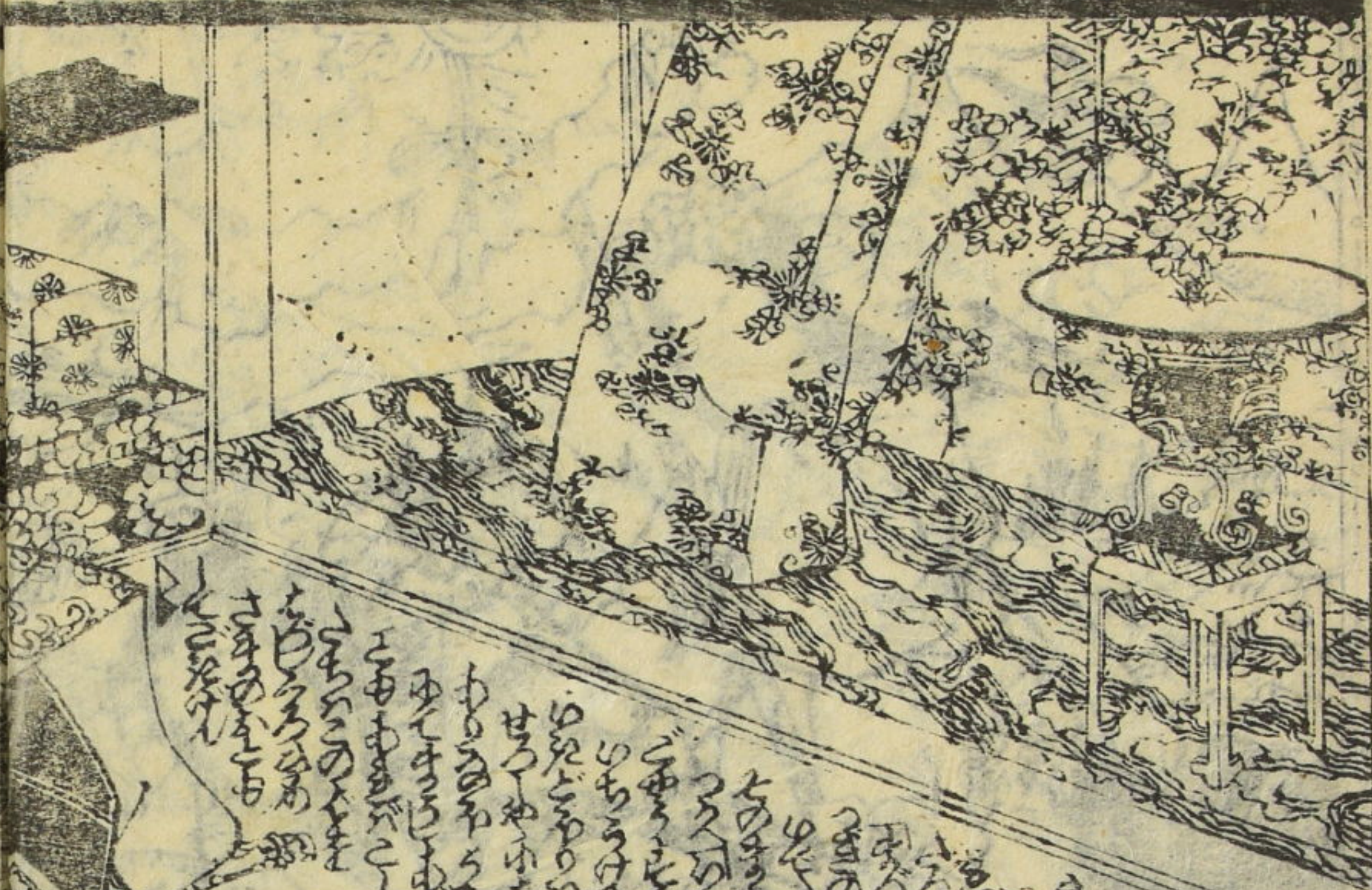
文
目
言
五



及
作
詩
五

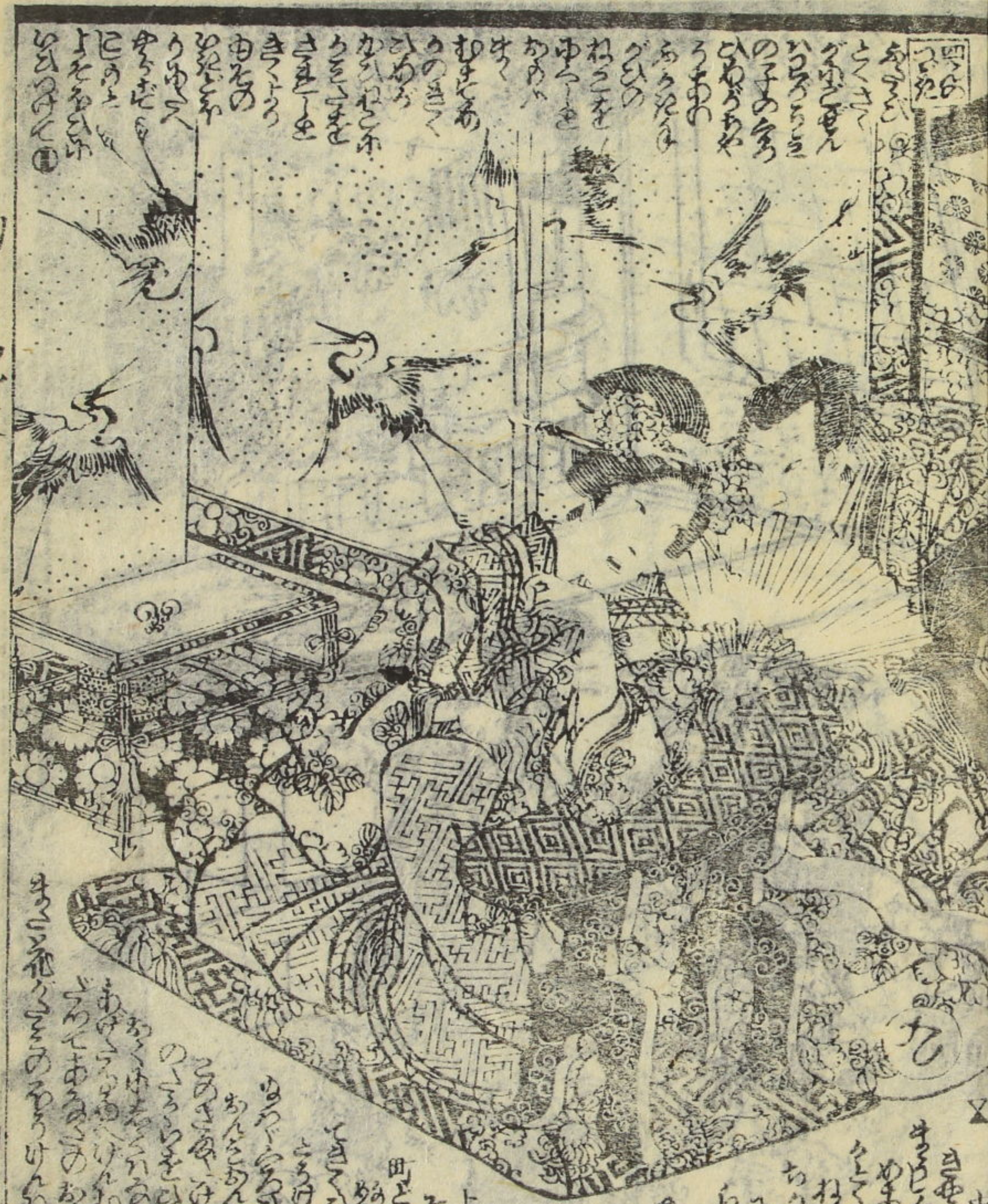
後
醍
醐
天
皇

曲
之
因
也



Handwritten text in a cursive style, likely a transcription of a poem or prose, located in the upper right section of the page.

Handwritten text in a cursive style, continuing the transcription, located in the lower right section of the page.

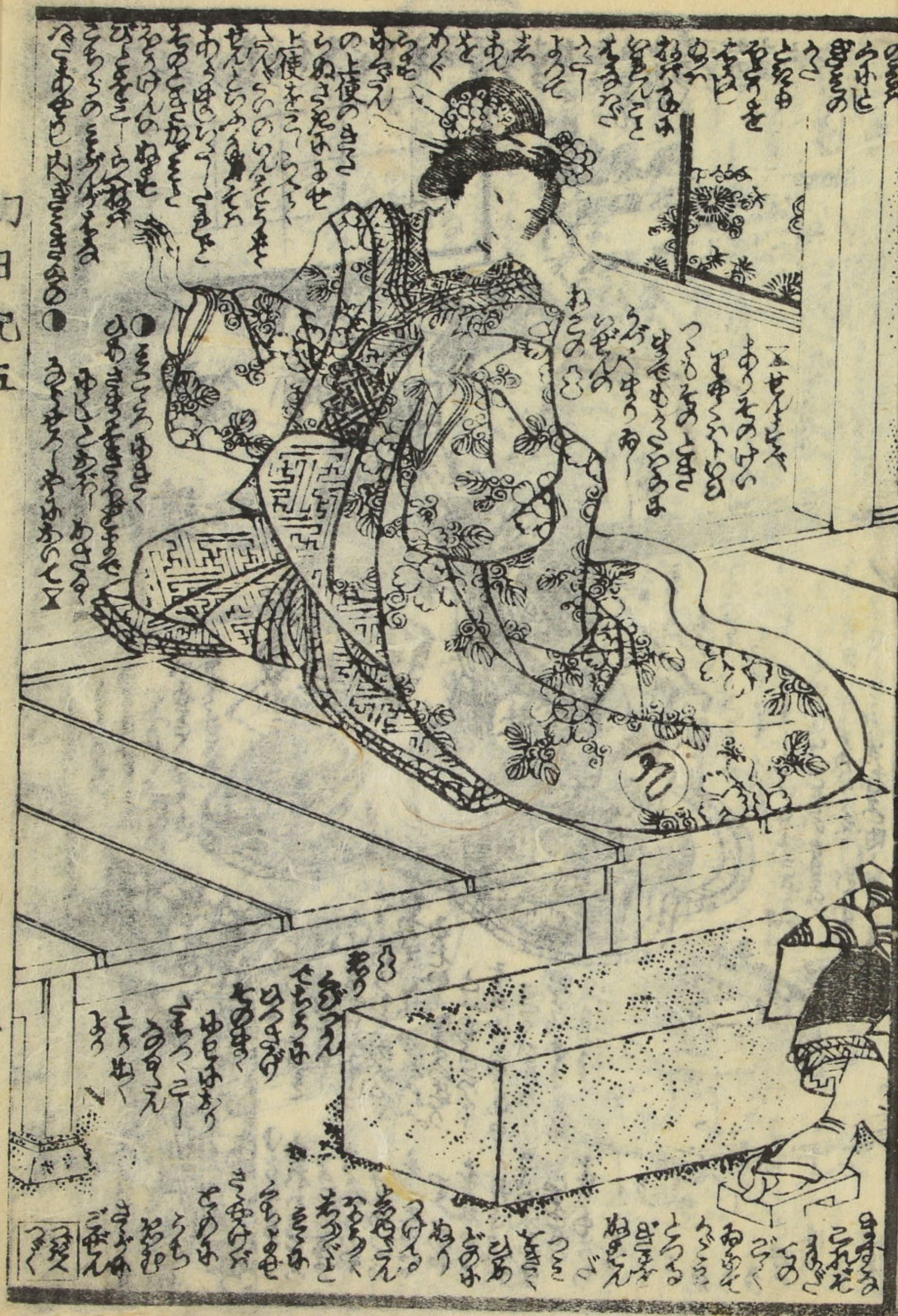


Handwritten text in a cursive style, located in the lower left section of the page, below the main illustration.

Vertical text on the far left edge of the page, possibly a title or reference.

Vertical text on the left edge, below the top section.

Vertical text on the left edge, below the main illustration.



久世吉五

四



Handwritten text at the top of the right page, including the characters '八五'.

Handwritten text surrounding the illustration on the right page, written in a cursive script.

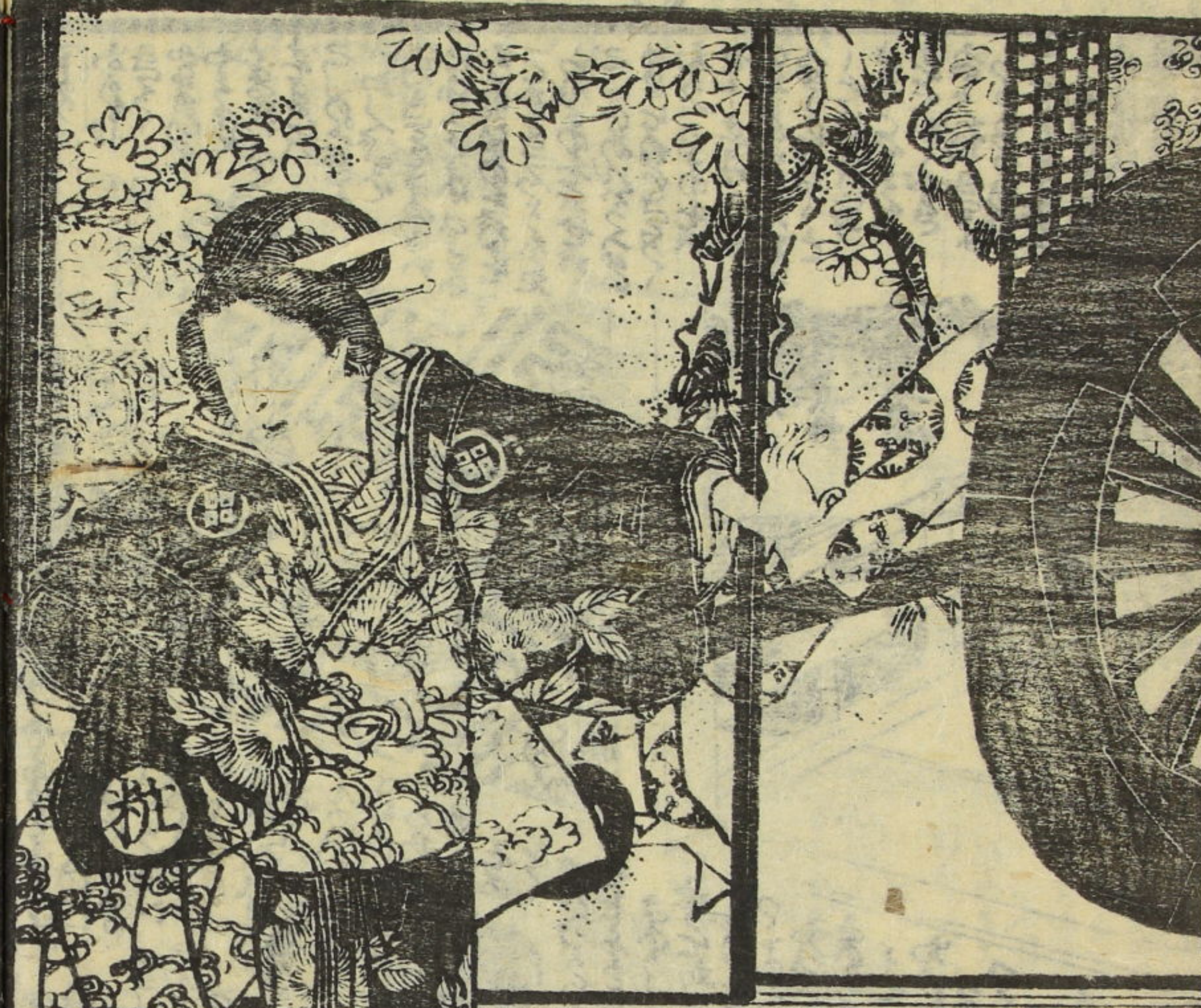


Handwritten text at the top of the left page, including the number '11'.

Handwritten text surrounding the illustration on the left page, written in a cursive script.



Handwritten text in a cursive script, likely a transcription of a Japanese text. The text is arranged in several columns, starting from the top right and moving downwards. The characters are small and densely packed.



Handwritten text in a cursive script, likely a transcription of a Japanese text. The text is arranged in several columns, starting from the top right and moving downwards. The characters are small and densely packed.



花井のちり
 聖拍のちり
 花井のちり
 花井のちり

花井のちり
 聖拍のちり
 花井のちり
 花井のちり



花井のちり
 聖拍のちり
 花井のちり
 花井のちり

Handwritten text in a cursive script, likely a historical or literary account, located at the top of the page.



Handwritten text in a cursive script, likely a historical or literary account, located at the bottom of the page.

福
智
寺