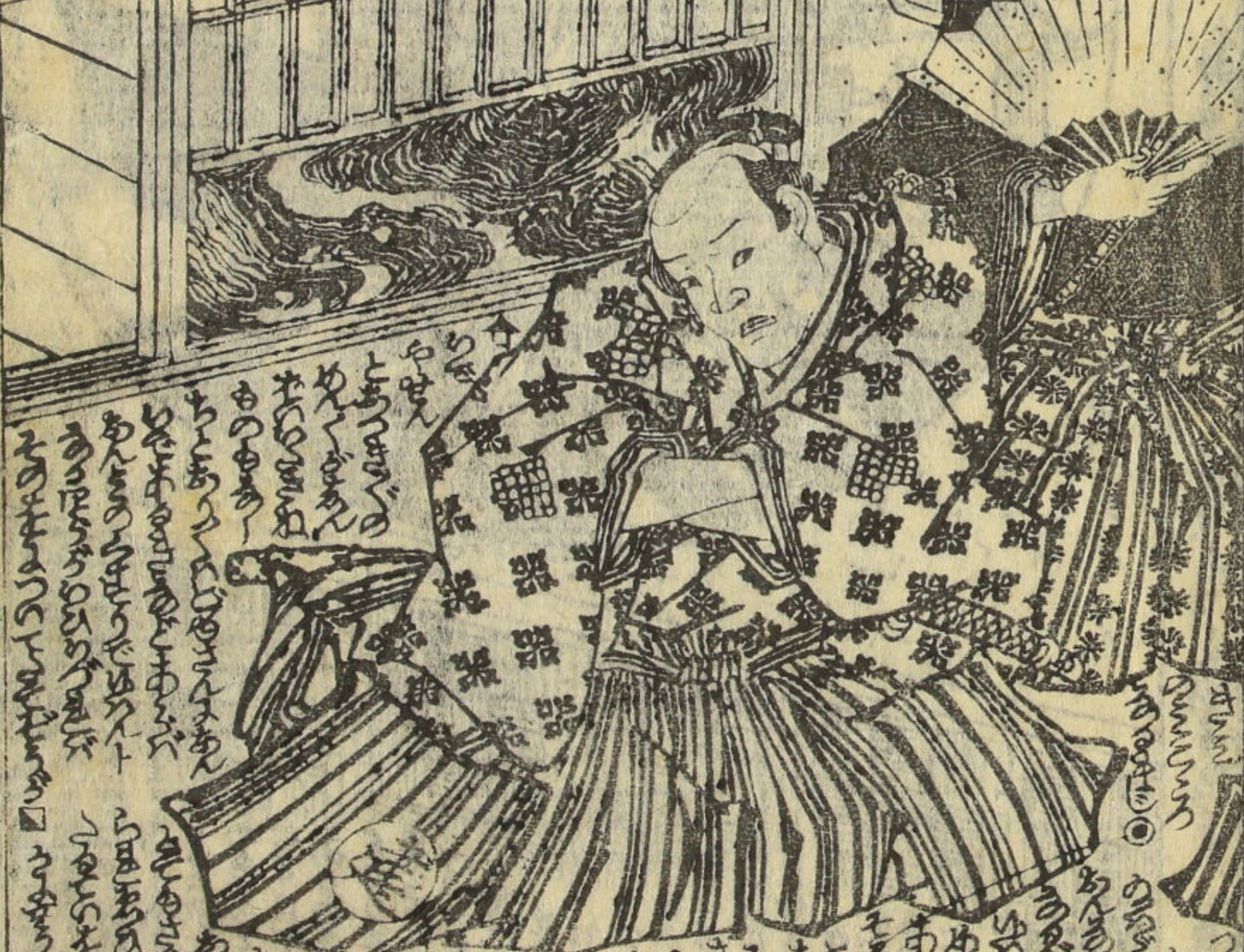


~ 13
3702
6

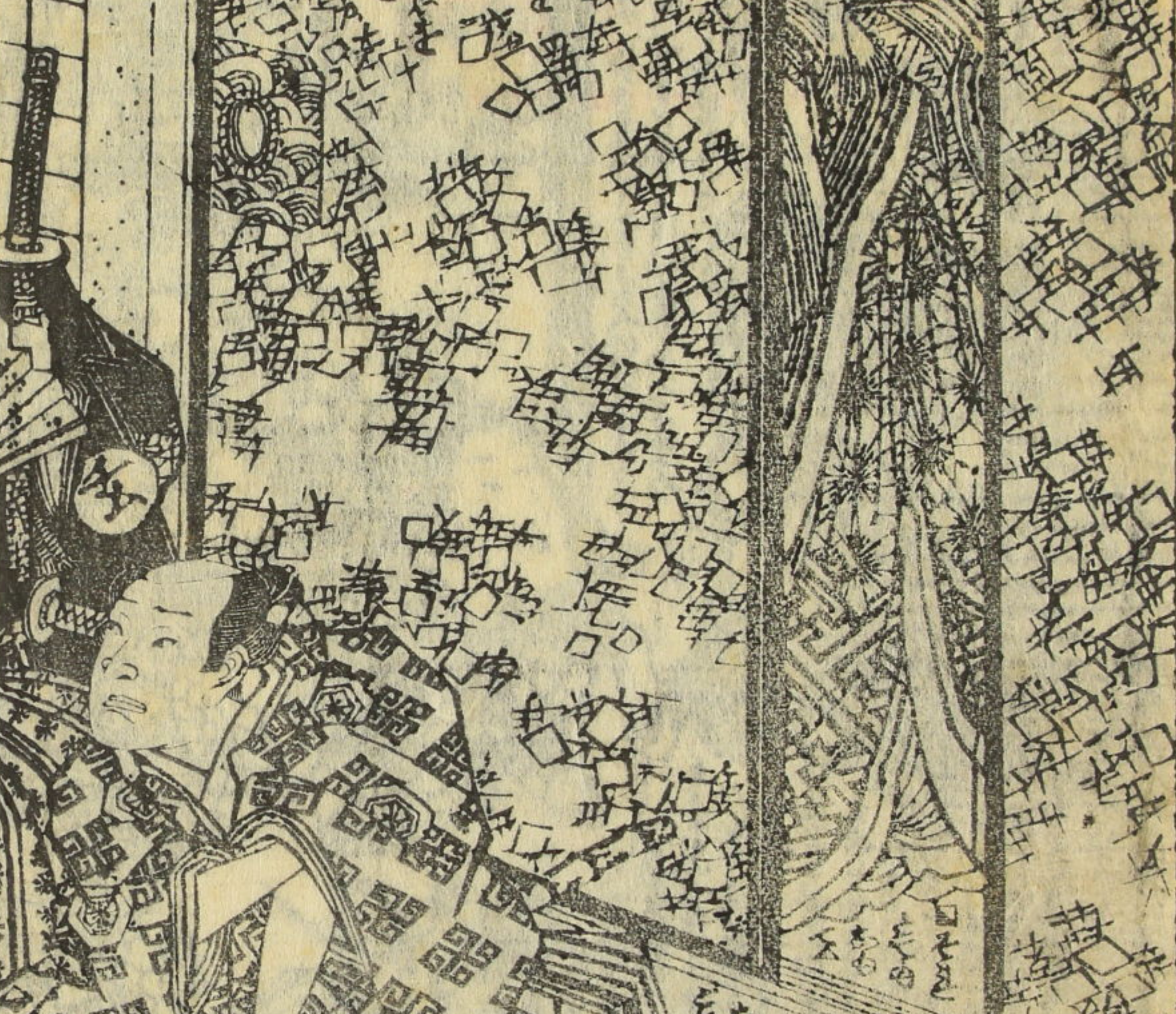


Handwritten text in a cursive script, likely a form of shorthand or a specific dialect, located at the top of the left page.



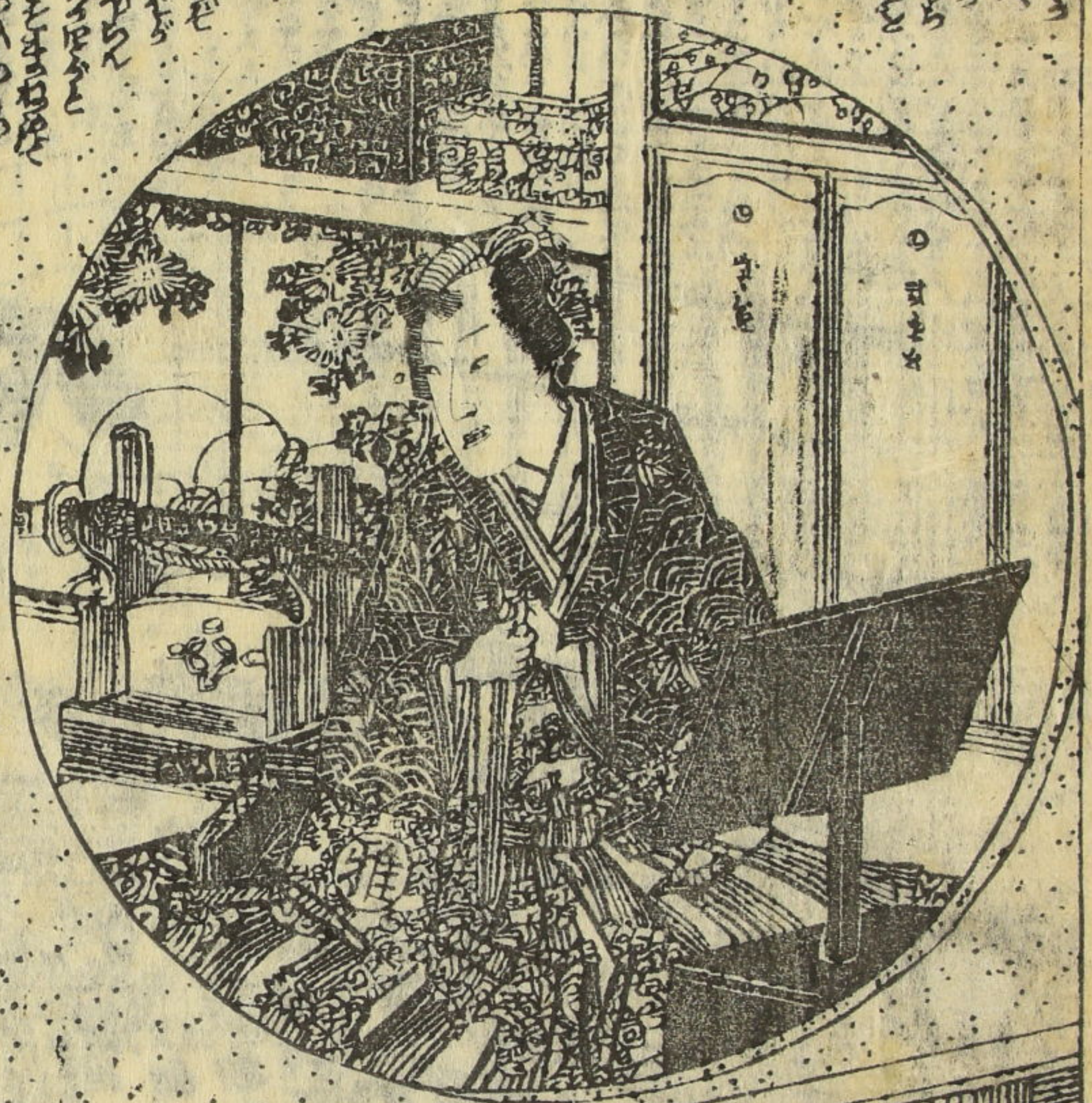
Handwritten text in a cursive script, likely a form of shorthand or a specific dialect, located at the bottom of the left page.

Handwritten text in a cursive script, likely a form of shorthand or a specific dialect, located at the top of the right page.



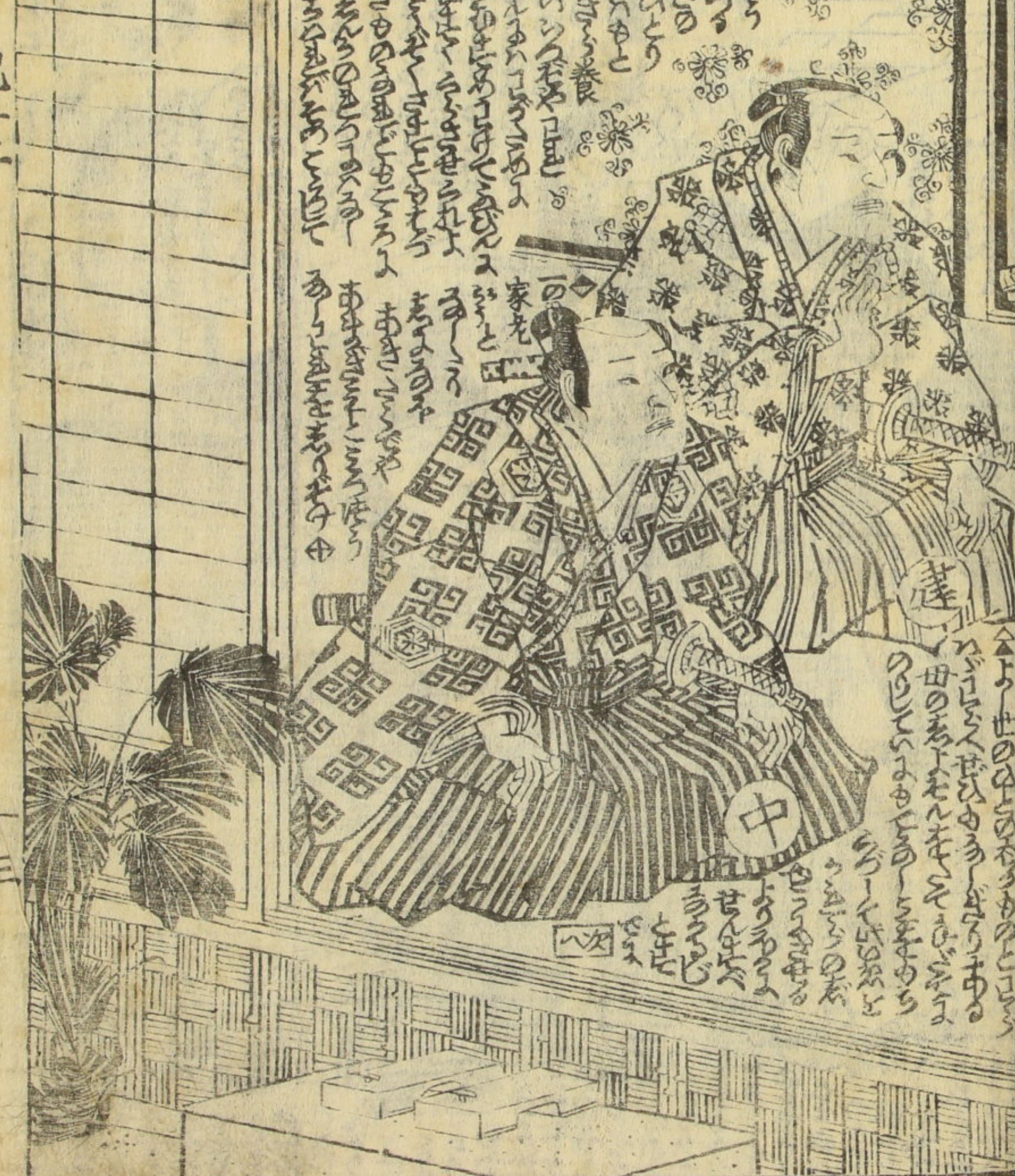
Handwritten text in a cursive script, likely a form of shorthand or a specific dialect, located at the bottom of the right page.

Handwritten text in a cursive script, likely a list or index, located at the top of the right page.

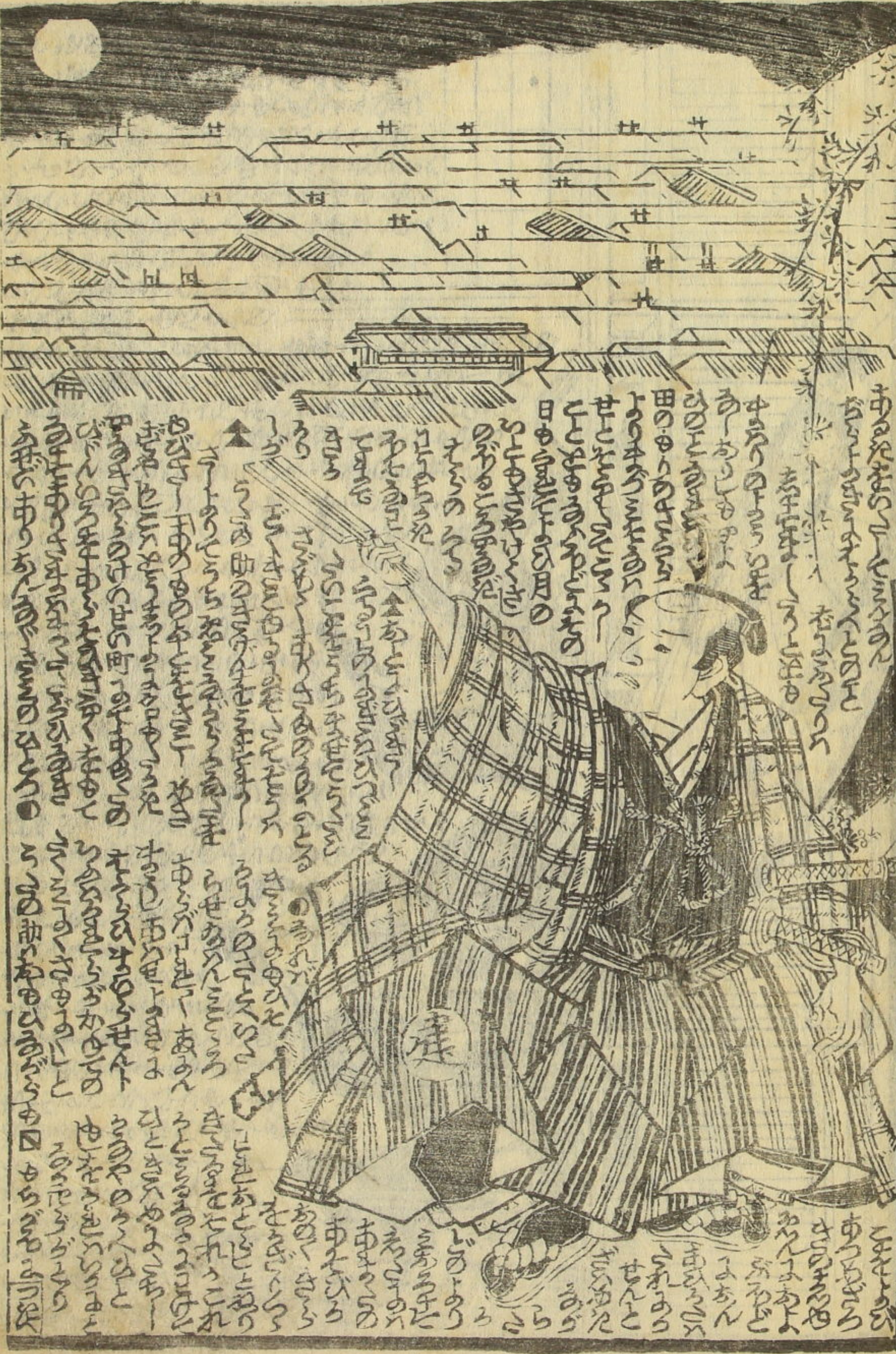


Handwritten text in a cursive script, located at the bottom of the right page, below the circular illustration.

Handwritten text in a cursive script, located at the top of the left page.



Handwritten text in a cursive script, located at the bottom of the left page.



Handwritten Japanese text in vertical columns, likely a commentary or a list of names. The text is written in a cursive style. Some characters are circled or highlighted. The text appears to be a list of names or titles, possibly related to the scene depicted in the illustration.

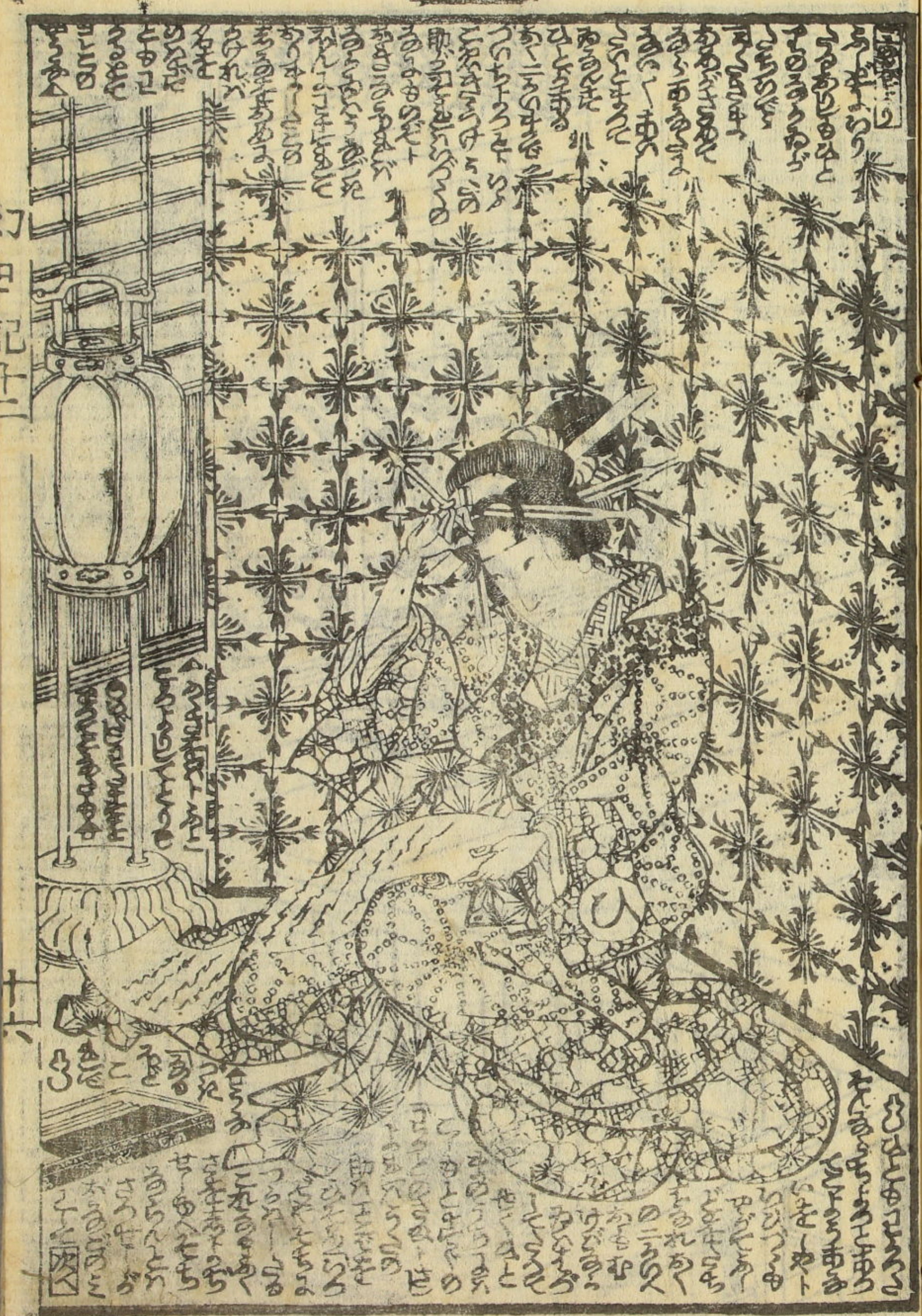
Vertical text on the left margin of the illustration page.

1-5



Handwritten Japanese text in vertical columns, likely a commentary or a list of names. The text is written in a cursive style. Some characters are circled or highlighted. The text appears to be a list of names or titles, possibly related to the scene depicted in the illustration.

Vertical text on the right margin of the illustration page.



Handwritten text in a cursive script, likely a form of Chinese or Japanese, located at the top of the illustration. The text is arranged in several horizontal lines.

Handwritten text in a cursive script, likely a form of Chinese or Japanese, located at the bottom of the illustration. The text is arranged in several horizontal lines.



Handwritten text in a cursive script, likely a form of Chinese or Japanese, located at the top of the illustration. The text is arranged in several horizontal lines.

Handwritten text in a cursive script, likely a form of Chinese or Japanese, located at the bottom of the illustration. The text is arranged in several horizontal lines.



Vertical text columns at the top of the right page, likely serving as a title or introductory text for the scene depicted below.



Vertical text columns at the bottom of the right page, likely providing commentary or a narrative for the scene above.

Vertical text columns at the top of the left page, likely serving as a title or introductory text for the scene depicted below.



Vertical text columns at the bottom of the left page, likely providing commentary or a narrative for the scene above.



Handwritten text in a non-Latin script, likely a dialect of Chinese or Japanese, surrounding the upper portion of the illustration. The text is arranged in vertical columns.

Handwritten text in a non-Latin script at the bottom of the illustration, continuing the annotations.



Handwritten text in a non-Latin script at the top of the illustration, above the figures.

Handwritten text in a non-Latin script at the bottom of the illustration, below the figures.



梅蝶樓國貞画
 為永春水作
 胡蝶卷
 朝牛肉丸
 板元敬白

七娘の葛飾譚

五編より
 八編まで
 柳亭種彦作
 梅蝶樓國貞画

室町源氏胡蝶卷

八篇種彦作
 九篇國貞画

筆海西國聞書

三編種彦作
 四編國貞画

假名情談戀睡倉

四編如阜作
 大尾國貞画

明得墨画廻福橋

三編種彦作
 四編國貞画

童謡妙々車

三編種彦作
 四編國貞画

花封谷口玉音

一編種彦作
 大尾國貞画

薄傳幻日記

十六編春水作
 十七編國貞画

矢傳大の及紙

四編柳亭録
 五編國貞画

地本双紙問屋

南傳馬両堂
 萬屋吉藏板

