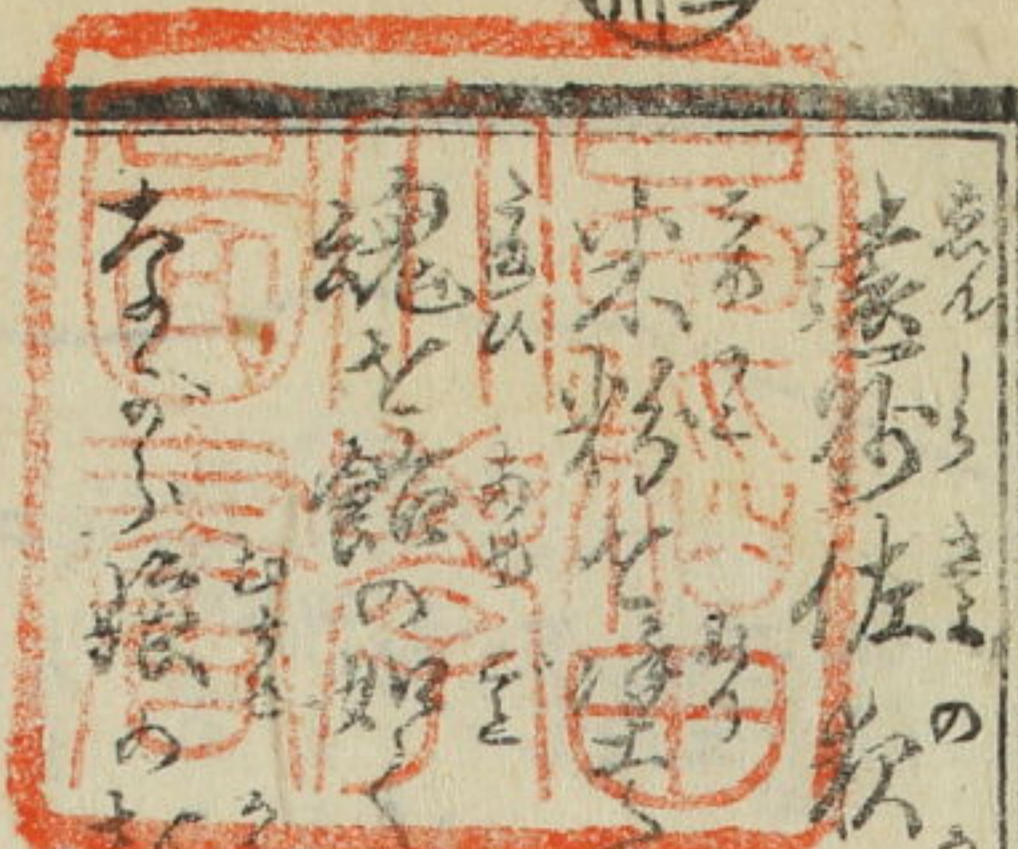


東海道膝栗毛三編

~ 13  
3694  
2

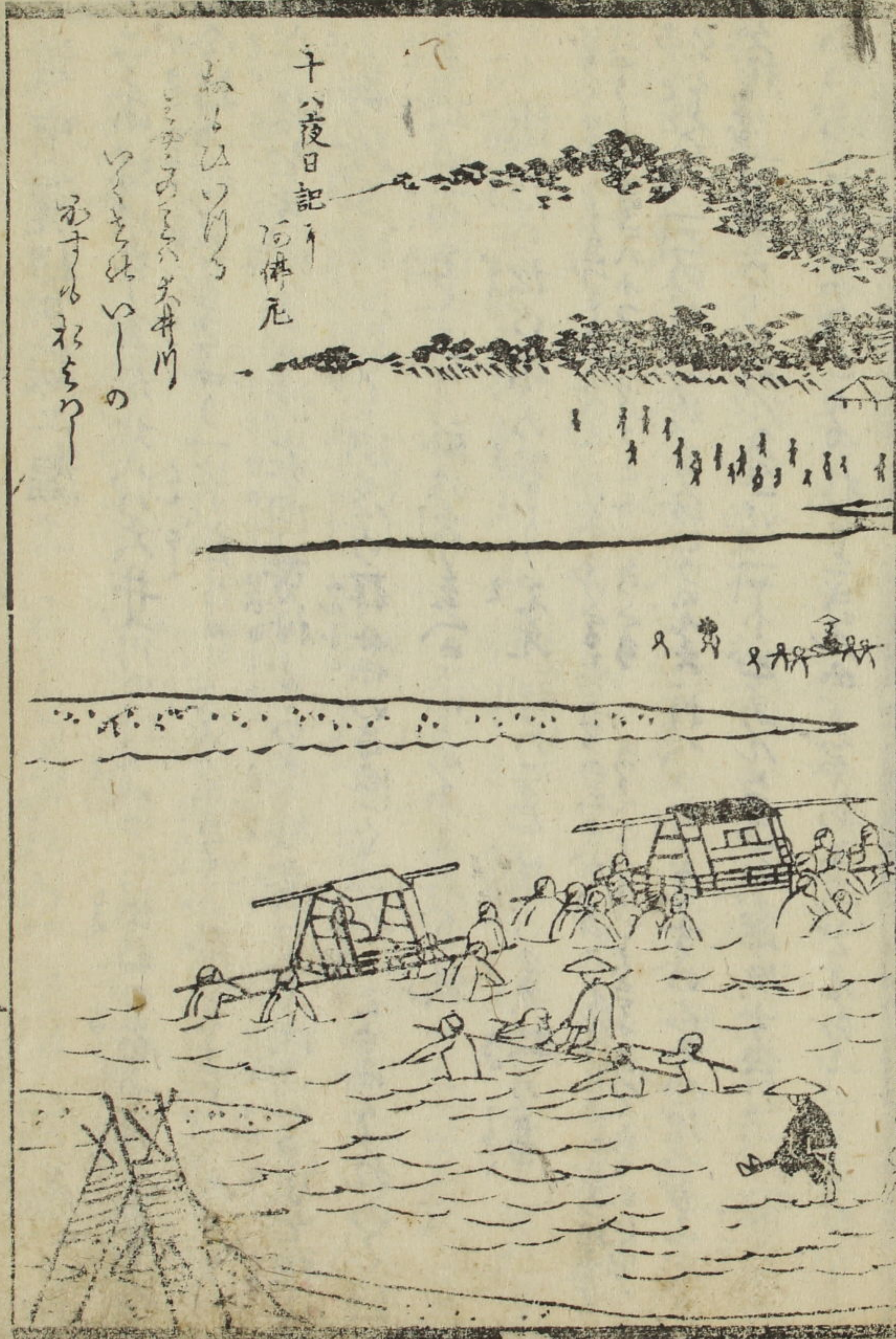


門へ13  
號 3694  
卷 2



蓋お佐次中山ゆき昔より勝つ始せのまを出来を忠抱とす  
未だ粉々たる地蔵の如き御言何處の家より有て松人の  
魂と館の如く難を愚拙先冬中夜と云に休懸始と去て  
ありし時松の歌に見え道徳をべつたり衣衾不ろけり大難候  
きり夕のりく後又此山と云えりに彼娘ハむことせり  
むつましく縁と雲助ホのくさう又縁をせりて  
蝶と館付と離れぬりしときハ山井座と離れりしとき  
申渡ハ弥次と稱し條桑毛因りり申文に此怨満  
あはれが誠証と云て摘みぐり序文はつ物と山人

アゲニ

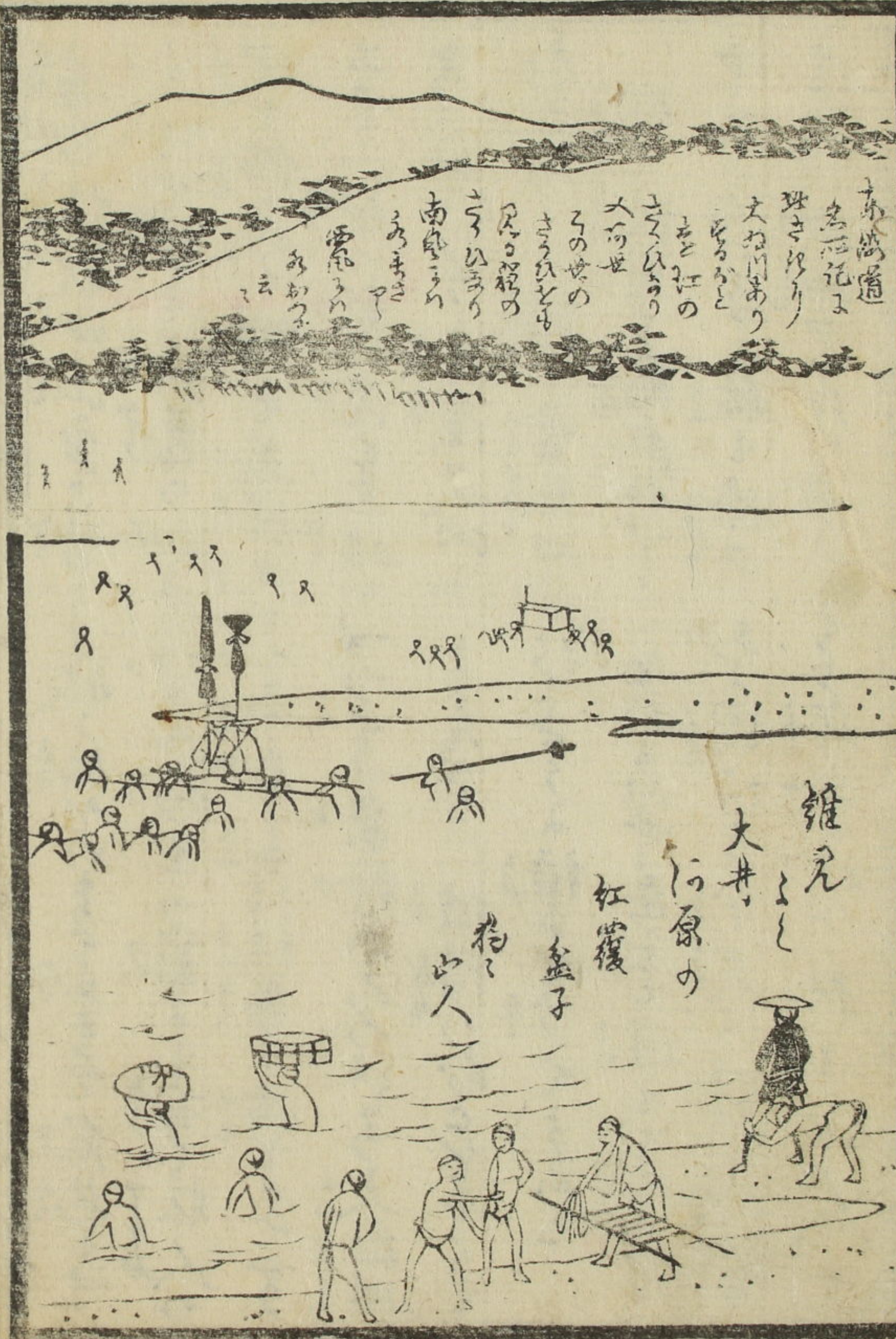


千八夜日記

河佛元

ふとひつり  
 千八夜日記  
 河佛元  
 千八夜日記  
 河佛元

千八夜日記



千八夜日記

河佛元

千八夜日記  
 河佛元  
 千八夜日記  
 河佛元

千八夜日記

河佛元

千八夜日記

河佛元

千八夜日記

河佛元



まのうけぞも  
 ひまのせき  
 やらうら  
 幸也 田くせん  
 ちづまのいんごま  
 ちづまのいんごま  
 さぬかつひてぬす。がふゆ  
 おしづののすこくまをま



▲さがつあつむら  
 うりたせすと  
 北のつと北八の今こま  
 さぬかつひてぬす。がふゆ  
 おしづののすこくまをま



ごろまん  
 あぬが  
 せんて  
 そさき  
 まま  
 が

先ヤア  
 木れ  
 の才  
 幸也  
 田くせん  
 ちづまのいんごま  
 ちづまのいんごま

島田  
 二ノハ  
 藤枝















Handwritten text in a cursive script, likely a historical document or manuscript. The text is written in a dark ink on aged paper. It consists of several lines of text, with some words or phrases enclosed in brackets. The script is dense and difficult to decipher without specialized knowledge of the language.

Handwritten text in a cursive script, similar to the one on the opposite page. It is written in a dark ink on aged paper. The text is dense and appears to be a continuation of a historical document or manuscript. Like the other page, it contains several lines of text with some words in brackets.

Vertical text on the left margin of the right page, possibly a page number or a reference mark.

Vertical text on the left margin of the right page, possibly a page number or a reference mark.

かん

あんなあんなあれもそのあんな  
あんなあんなくとうりあんなあ

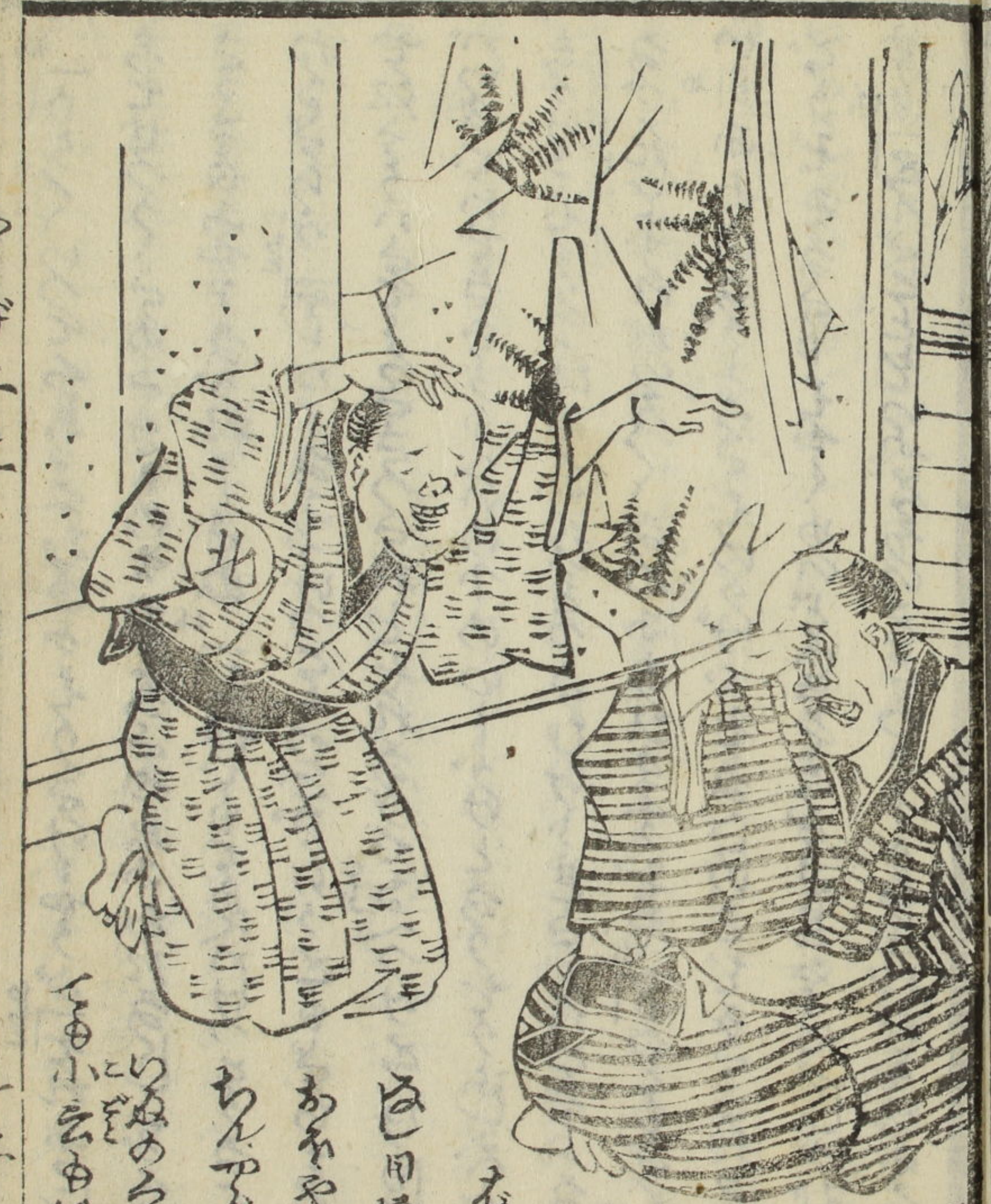
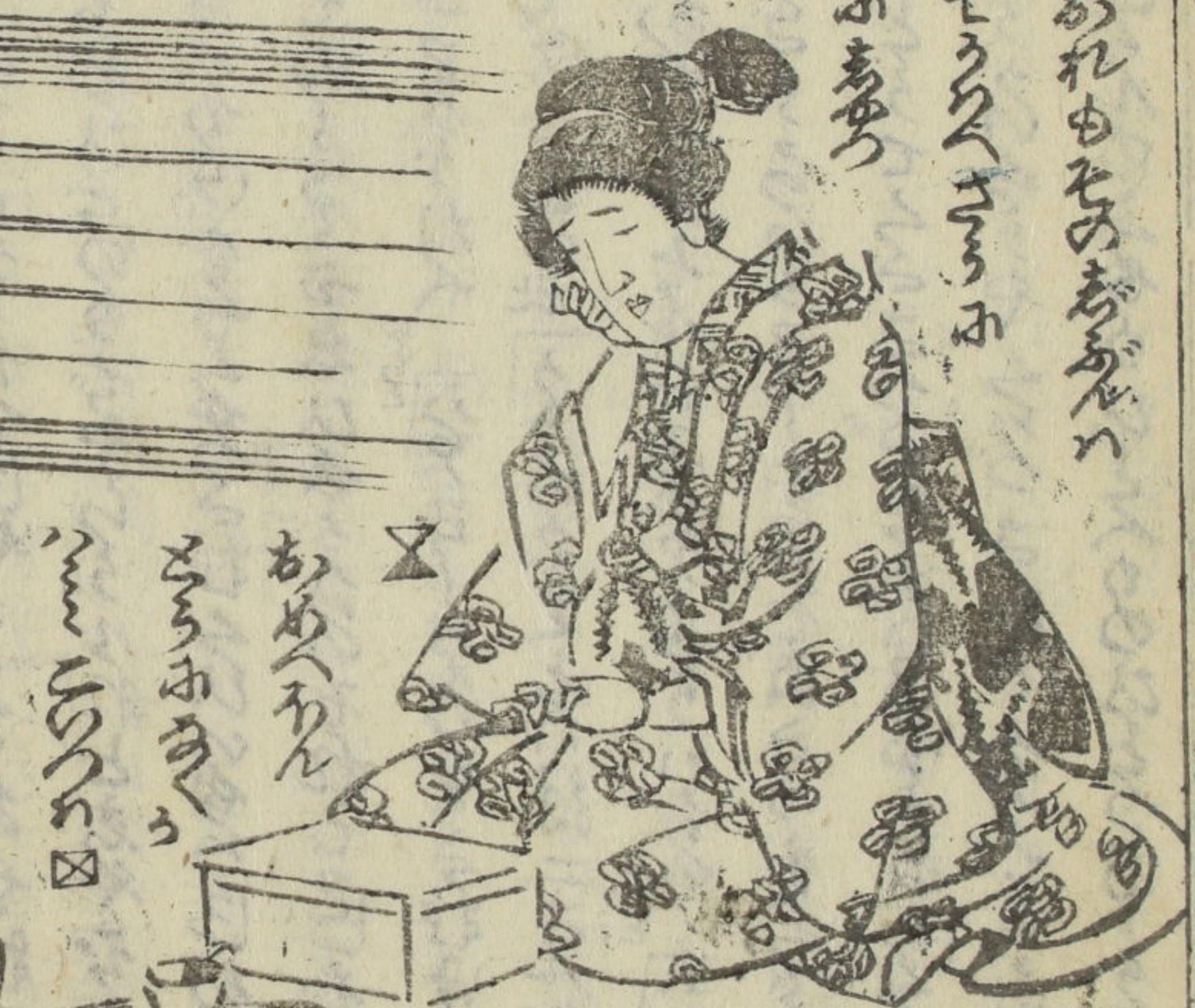
あんなあんなあんなあんなあ

あんなあんなあんなあんなあ

西坂川  
一り廿九丁

あんなあんな  
あんなあんな  
あんなあんな

あんなあんな  
あんなあんな  
あんなあんな



あんなあんなあんなあんなあ  
あんなあんなあんなあんなあ  
あんなあんなあんなあんなあ

あんなあんなあんなあんなあ  
あんなあんなあんなあんなあ  
あんなあんなあんなあんなあ

Handwritten text in a cursive script, likely a historical document or manuscript. The text is written in a dark ink on aged paper. It begins with a large initial letter 'E' and continues with several lines of text. There are some small annotations or corrections in the left margin.

Handwritten text in a cursive script, likely a historical document or manuscript. The text is written in a dark ink on aged paper. It begins with a large initial letter 'E' and continues with several lines of text. There are some small annotations or corrections in the left margin.

Vertical text in the left margin of the right page, possibly a page number or reference.

Vertical text in the left margin of the left page, possibly a page number or reference.



Handwritten notes in the right margin of the top page.

Main handwritten text on the top page, written in a cursive style with various annotations and corrections.

Main handwritten text on the bottom page, continuing the cursive script with annotations.







Handwritten text at the top of the right page, possibly a page number or header.

Main body of handwritten text on the right page, written in a cursive script. Includes several lines of text with some words in brackets and small annotations.

Main body of handwritten text on the left page, continuing the cursive script from the right page. Includes several lines of text with some words in brackets and small annotations.

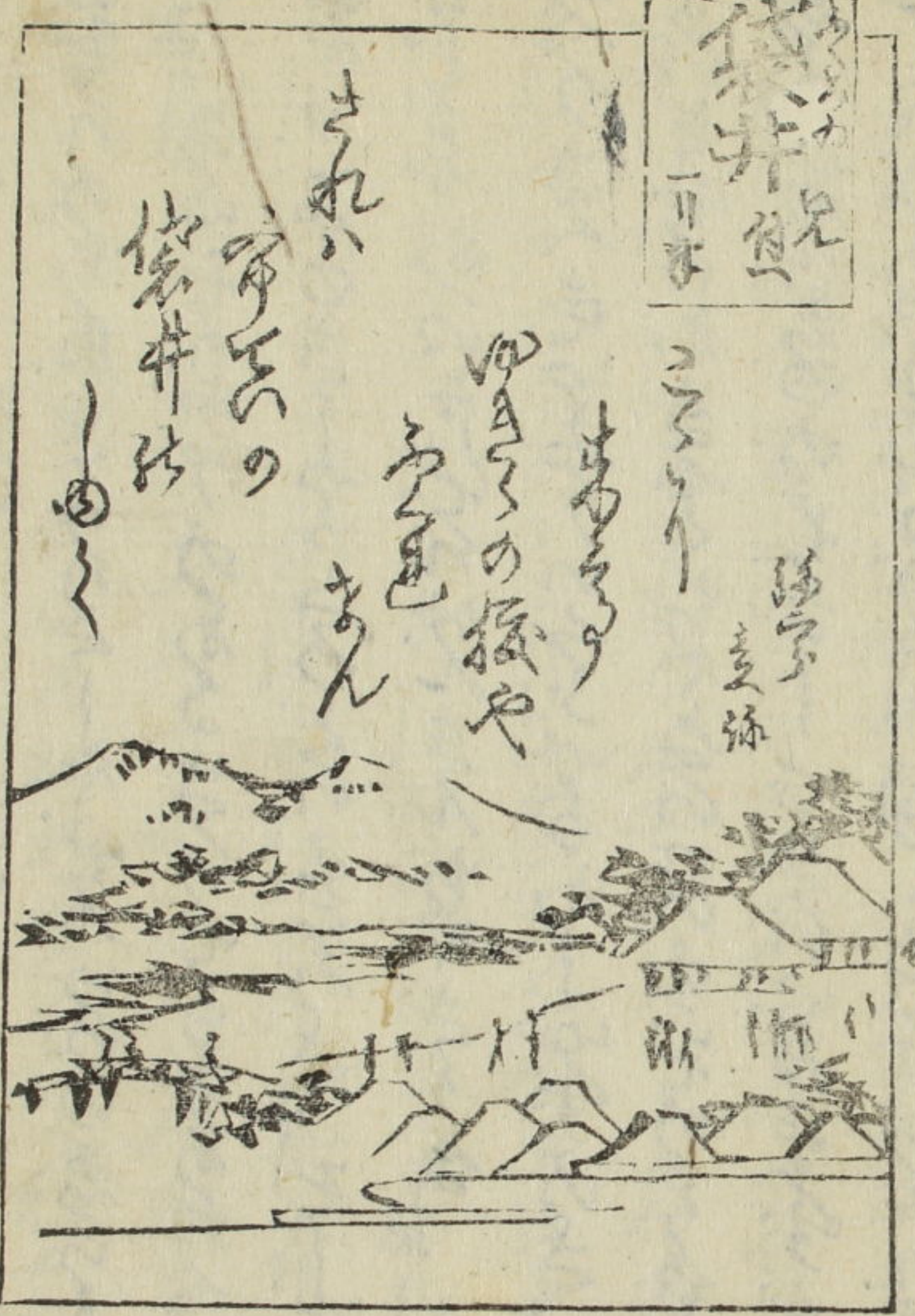
Handwritten text at the bottom of the left page, possibly a page number or footer.







ちんちんちんちん  
 むむむむむむむ  
 あひあひあひあひ  
 かんわど  
 かきかき  
 むむむむむ  
 らむむむむ  
 うひひひひ  
 ぢぢぢぢぢ  
 五々々々々  
 十々々々々



袋井 鮎  
 二  
 三  
 四  
 五  
 六  
 七  
 八  
 九  
 十

ちんちんちんちん  
 むむむむむむむ  
 あひあひあひあひ  
 かんわど  
 かきかき  
 むむむむむ  
 らむむむむ  
 うひひひひ  
 ぢぢぢぢぢ  
 五々々々々  
 十々々々々

二  
 三  
 四  
 五  
 六  
 七  
 八  
 九  
 十

五

Handwritten text in a cursive script, likely a historical document or manuscript. The text is written in a dark ink on aged paper. It consists of several lines of text, with some words appearing to be in a different language or dialect than others. The script is dense and somewhat difficult to decipher without a key.

Handwritten text in a cursive script, similar to the one on the opposite page. It appears to be a continuation of the same document or a related one. The text is written in a dark ink on aged paper. It consists of several lines of text, with some words appearing to be in a different language or dialect than others. The script is dense and somewhat difficult to decipher without a key.

Handwritten text at the bottom of the page, possibly a signature or a date. It is written in a cursive script and is somewhat difficult to read.















新もゆけり

あひくせり

りてり

も

も

すれり

まの



○ちやえんひと

くらと

こちやえん  
せりぬのり

ゆちせつて  
さつちりり

北  
まのり

わく  
そりやテ

あひゆちのかん

北  
てあちり  
あんかまてうら

あひゆちりあひ

北  
あひゆち

つれあひ

▲と

北  
あひゆちりあひ  
あひゆちりあひ  
あひゆちりあひ

あひゆちりあひ  
あひゆちりあひ  
あひゆちりあひ

あひゆちりあひ  
あひゆちりあひ  
あひゆちりあひ

あひゆちりあひ  
あひゆちりあひ  
あひゆちりあひ

あひゆちりあひ  
あひゆちりあひ  
あひゆちりあひ

あひゆちりあひ  
あひゆちりあひ  
あひゆちりあひ

あひゆちりあひ  
あひゆちりあひ  
あひゆちりあひ

あひゆちりあひ  
あひゆちりあひ  
あひゆちりあひ

あひゆちりあひ  
あひゆちりあひ  
あひゆちりあひ

あひゆちりあひ  
あひゆちりあひ  
あひゆちりあひ















































