

一陽齋豊國畫

一名  
大の草紙

笠亭仙果鈔録

大八編下

大八編上

葛吉板

13  
3414  
36

13  
3414  
35







笠亭仙果鈔錄

大綱上

へ13  
3414  
35



紅英堂梓



十八編上

六之 雙宗

仙果鈔錄 豊國画

五清

十七編中も既小の童蒙が狗と励を語わけけつと公の最古き語  
 あり是も書紀ふ仁徳の御製  
 夜葦之呂珥伊辞鶏若利夜葦伊辞鶏之鶏阿餓茂赴免  
 摩珥伊辞阿波牟伽茂  
 此伊辞鶏のつとはとも傍假字のて山城早く急はと久御飲るの  
 おと五音相通也  
 精る語る下とを我旧友栗生を戯る豚の犬の飲  
 黒班の赤班の  
 扱ありの果處草紙も見狭小の心と留て味則の勅る賣僧法  
 師の終美聴より益あんと吾田水と引る一節猪平お利根の忠貞義  
 烈あつては編より後小毛野が傍不積は六花やる画組も君を先  
 編の初も実を賞翫あれと申さ

壬子謹月

笠亭仙果







毒婦舟虫

千葉氏家臣  
馬加大記



武藏石濱城

舞姫朝用笠  
犬阪毛野胤智

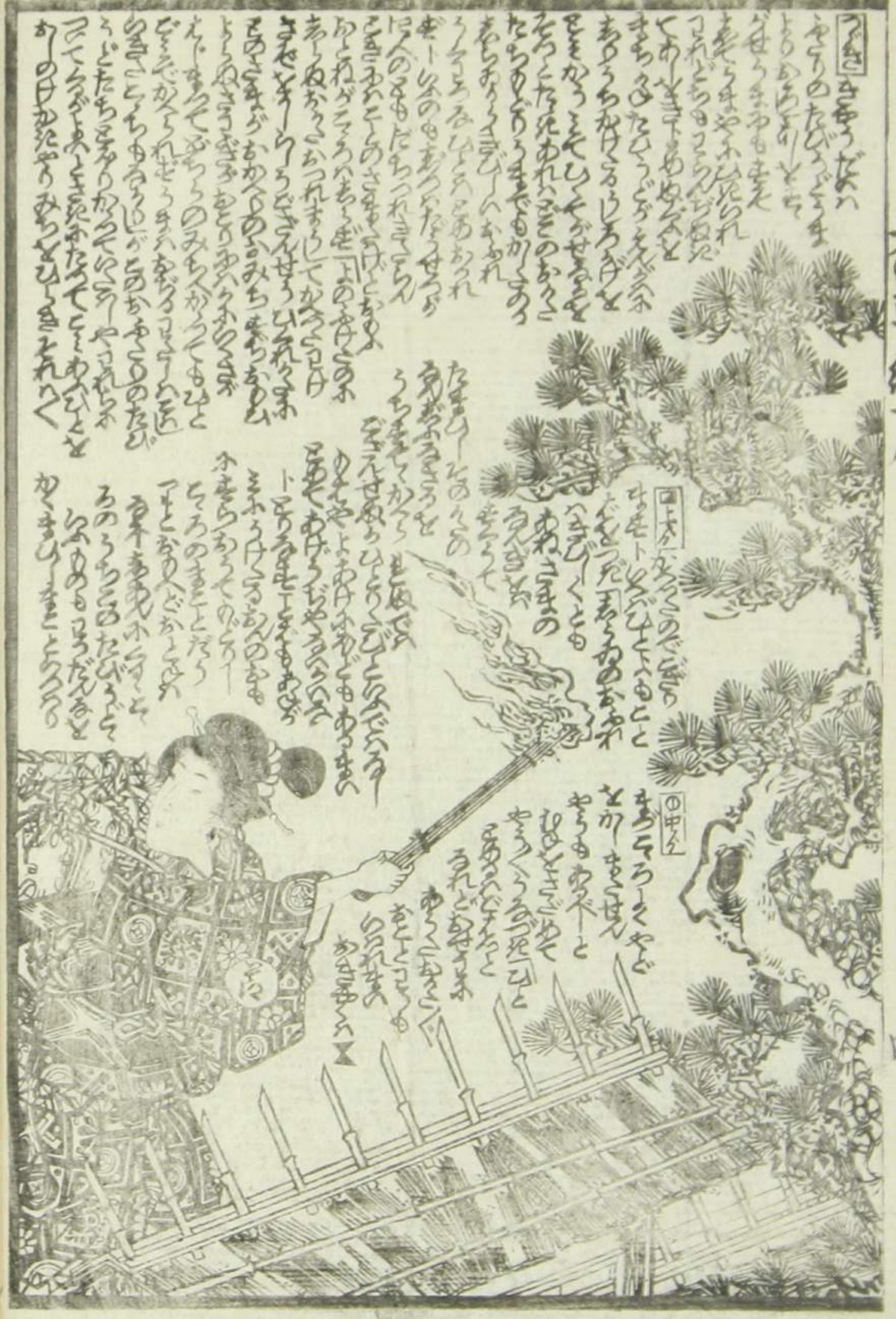












Handwritten text in vertical columns, likely a haikai or waka poem, located above the illustration on the right page.

Handwritten text in vertical columns, likely a haikai or waka poem, located below the illustration on the right page.



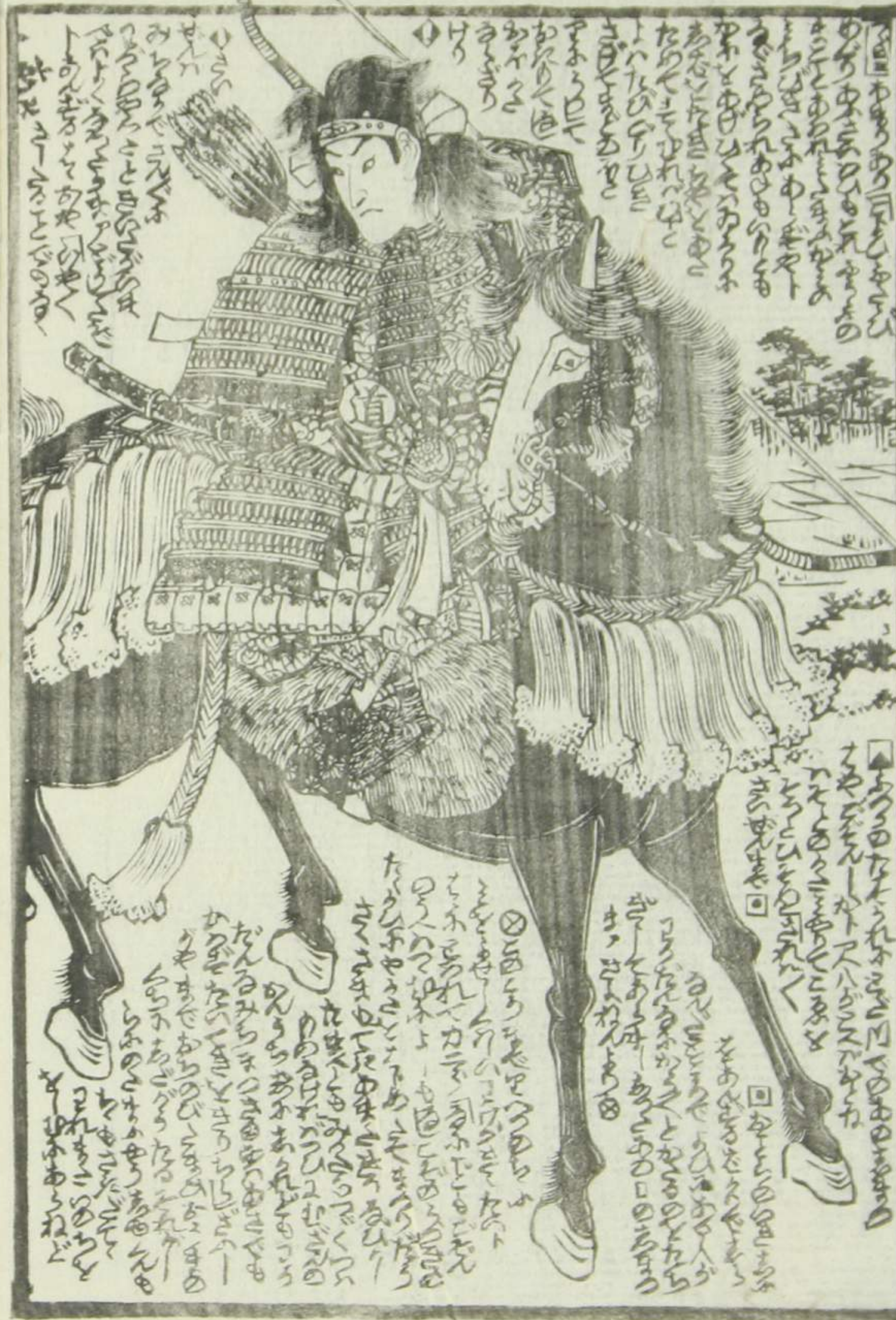
Handwritten text in vertical columns, likely a haikai or waka poem, located above the illustration on the left page.

Handwritten text in vertical columns, likely a haikai or waka poem, located below the illustration on the left page.









この馬は名馬なり  
歩行は疾く走りは速く  
力強く背は高く  
毛は艶やか  
顔は威風凛々  
此の馬は名馬なり  
歩行は疾く走りは速く  
力強く背は高く  
毛は艶やか  
顔は威風凛々

此の馬は名馬なり  
歩行は疾く走りは速く  
力強く背は高く  
毛は艶やか  
顔は威風凛々  
此の馬は名馬なり  
歩行は疾く走りは速く  
力強く背は高く  
毛は艶やか  
顔は威風凛々



此の馬は名馬なり  
歩行は疾く走りは速く  
力強く背は高く  
毛は艶やか  
顔は威風凛々  
此の馬は名馬なり  
歩行は疾く走りは速く  
力強く背は高く  
毛は艶やか  
顔は威風凛々

此の馬は名馬なり  
歩行は疾く走りは速く  
力強く背は高く  
毛は艶やか  
顔は威風凛々  
此の馬は名馬なり  
歩行は疾く走りは速く  
力強く背は高く  
毛は艶やか  
顔は威風凛々

大谷鬼女母神道

大谷鬼女母神道





田舎者  
世に  
さういふ  
よのあつた  
まゝるる

いふこと  
あつた  
これぞ  
これぞ

いふこと  
あつた  
これぞ  
これぞ

いふこと  
あつた  
これぞ  
これぞ



いふこと  
あつた  
これぞ  
これぞ

いふこと  
あつた  
これぞ  
これぞ









Handwritten Japanese text in vertical columns, located above the illustration. The text is dense and appears to be a commentary or a list of items related to the scene.

Handwritten Japanese text in vertical columns, located below the illustration. The text continues the commentary or list from the upper section.



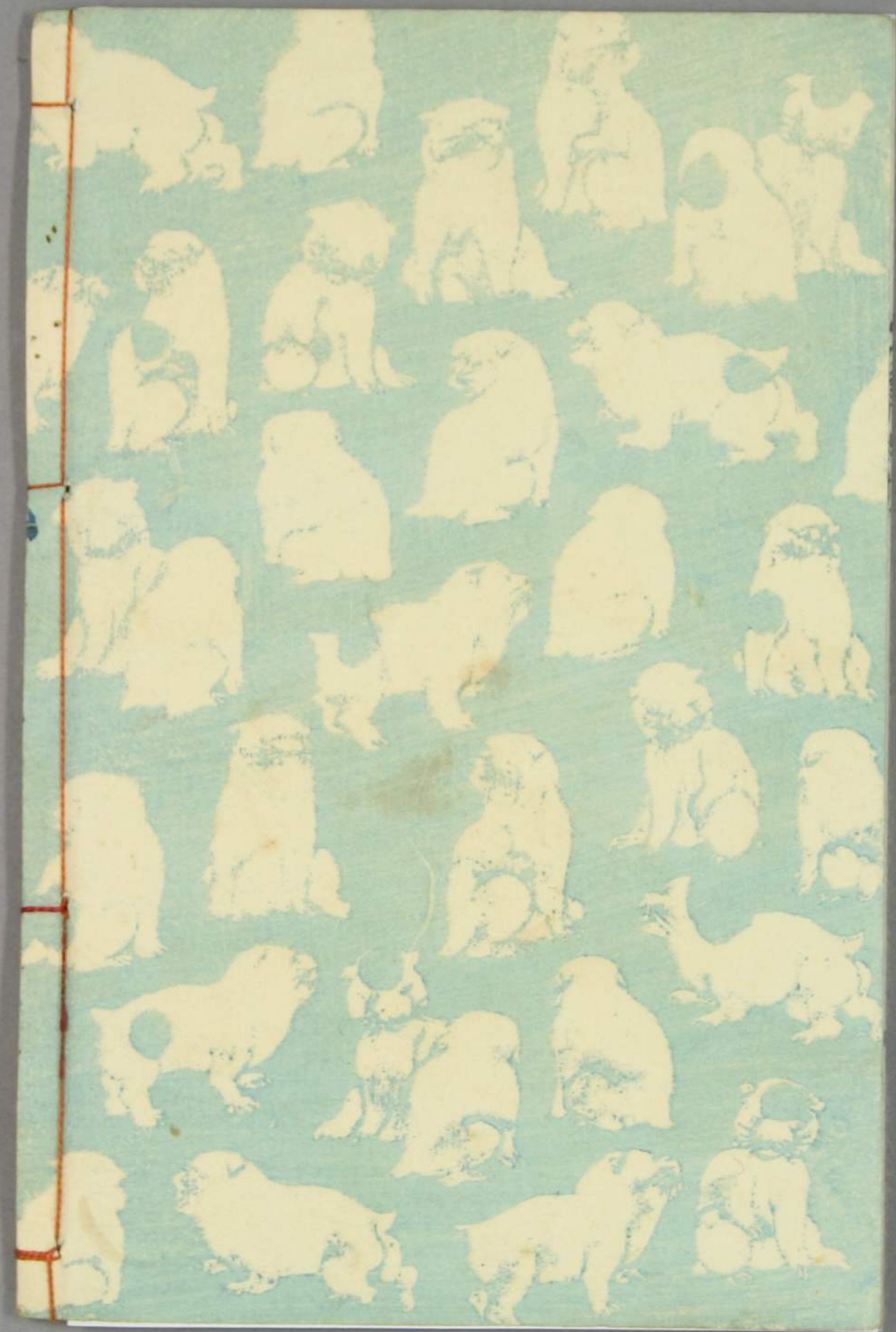
Handwritten Japanese text in vertical columns, located above the illustration. The text is dense and appears to be a commentary or a list of items related to the scene.

Handwritten Japanese text in vertical columns, located below the illustration. The text continues the commentary or list from the upper section.













一陽齋豊國畫

一名いぬ  
矢傳 大の草紙

十八編下

萬吉板

13  
3414  
36



八 12  
3414  
110



雪

梅

茅禪

大の

取紙

下

十八編

仙果鉢縁

女寺小畫

葛志板

Three circular and rectangular stamps at the top of the page.



六草紙

Handwritten text in the middle section of the page, including the characters '草紙'.

Handwritten text in the bottom section of the page, including the characters '草紙'.







Handwritten text in a cursive script, likely a letter or a page from a manuscript. The text is dense and fills the upper portion of the page.



Handwritten text in a cursive script, continuing the narrative or letter from the previous page. The text is dense and fills the upper portion of the page.







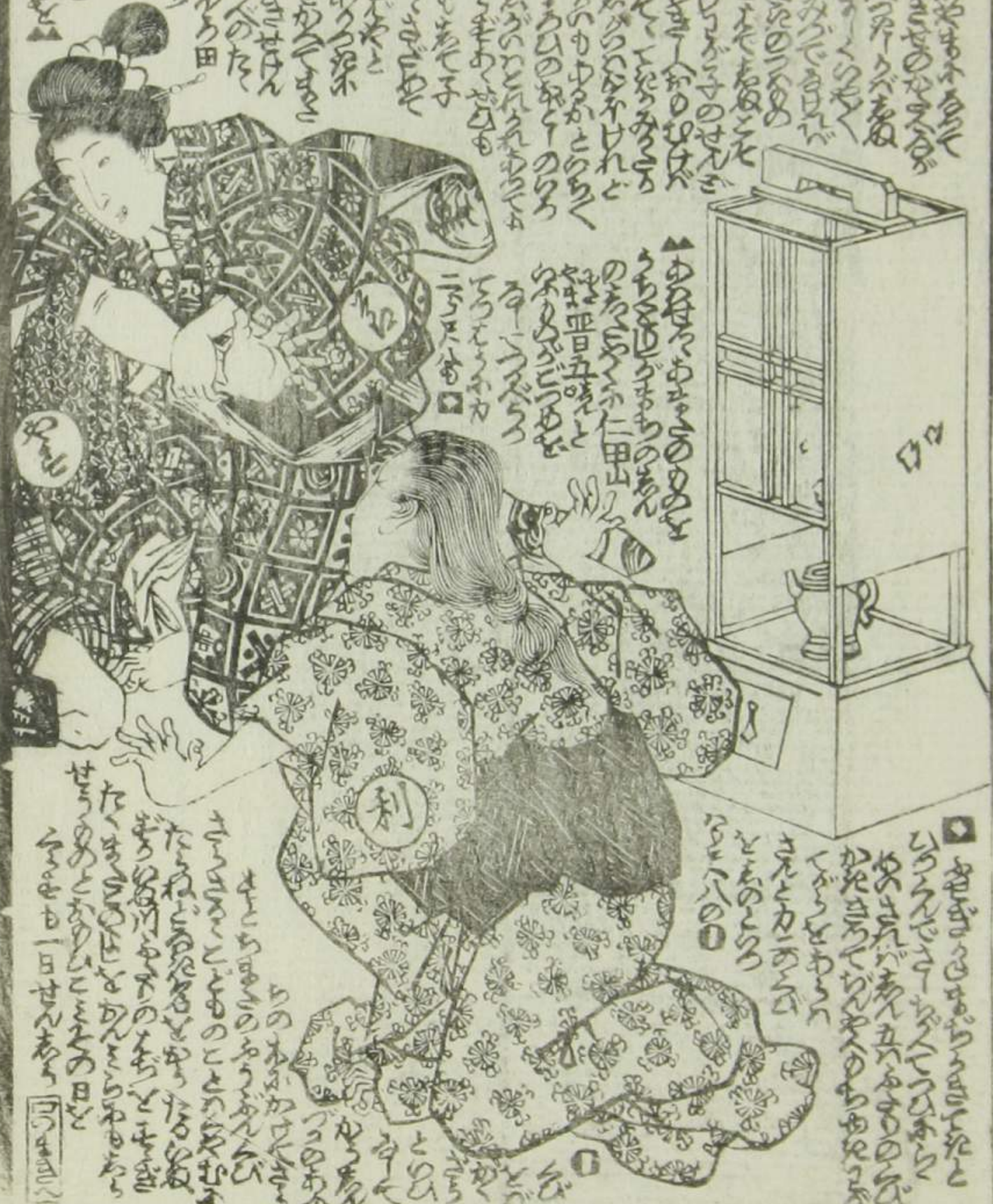


Figure 2: A page from a Japanese woodblock print book. The top half contains vertical columns of Japanese text. The bottom half features a woodblock illustration of two women in a room. One woman is seated and playing a shamisen, while the other stands beside her. The scene is framed by architectural elements like sliding doors and a window. The illustration is surrounded by additional Japanese text.

Figure 3: A page from a Japanese woodblock print book. The top half contains vertical columns of Japanese text. The bottom half features a woodblock illustration of a man and a woman in a room. The man is seated and playing a shamisen, while the woman stands beside him. The scene is framed by architectural elements like sliding doors and a window. The illustration is surrounded by additional Japanese text.



Handwritten text in the top section of the right page, written in a vertical column.



Handwritten text in the bottom section of the right page, continuing the vertical column.

Handwritten text in the top section of the left page, written in a vertical column.



Handwritten text in the bottom section of the left page, written in a vertical column.







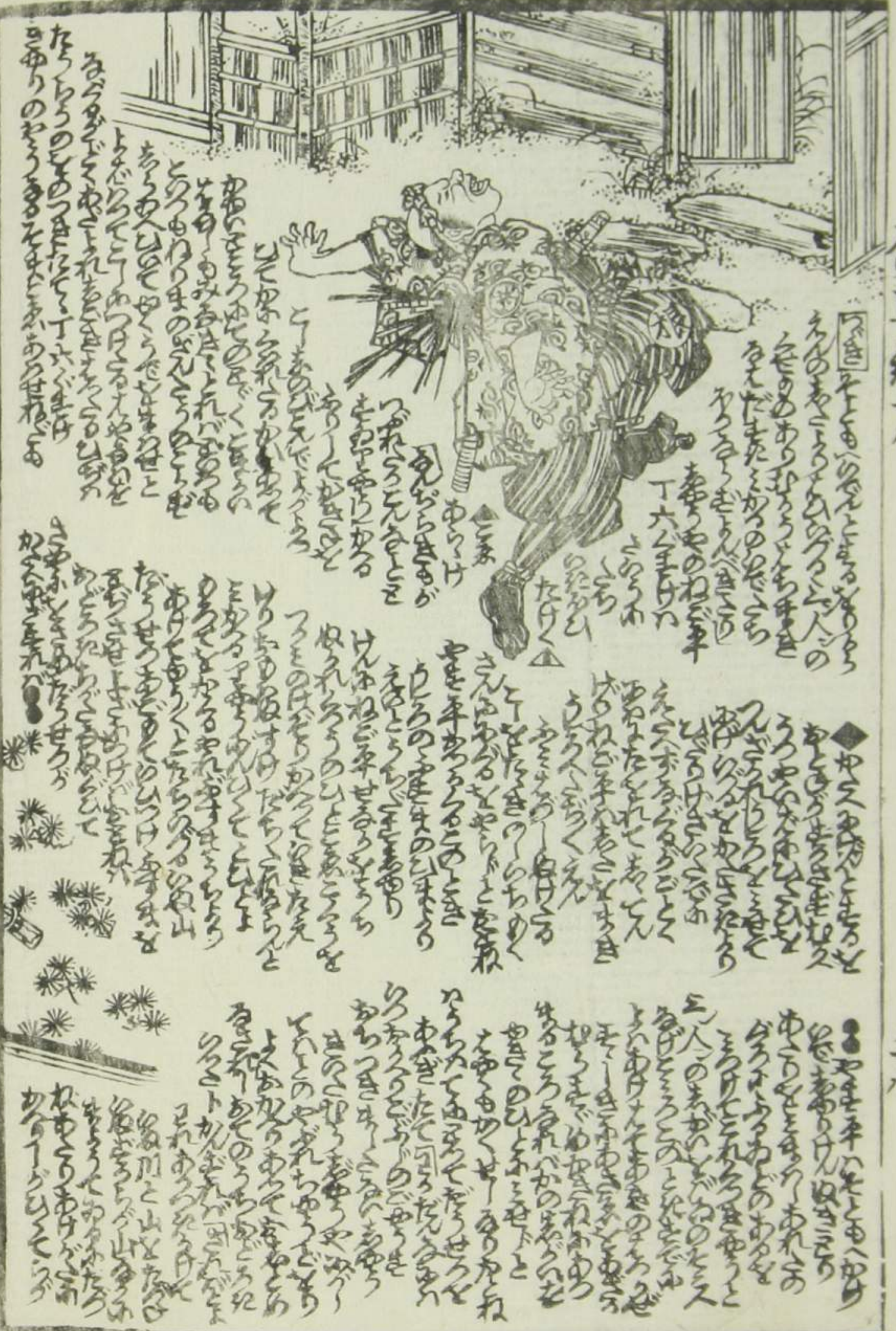
何れも... 草紙... 下... 何れも... 草紙... 下...



何れも... 草紙... 下... 何れも... 草紙... 下...







Vertical columns of handwritten Japanese text surrounding the illustration on the right page.



Vertical columns of handwritten Japanese text surrounding the illustration on the left page.

大の道

十二







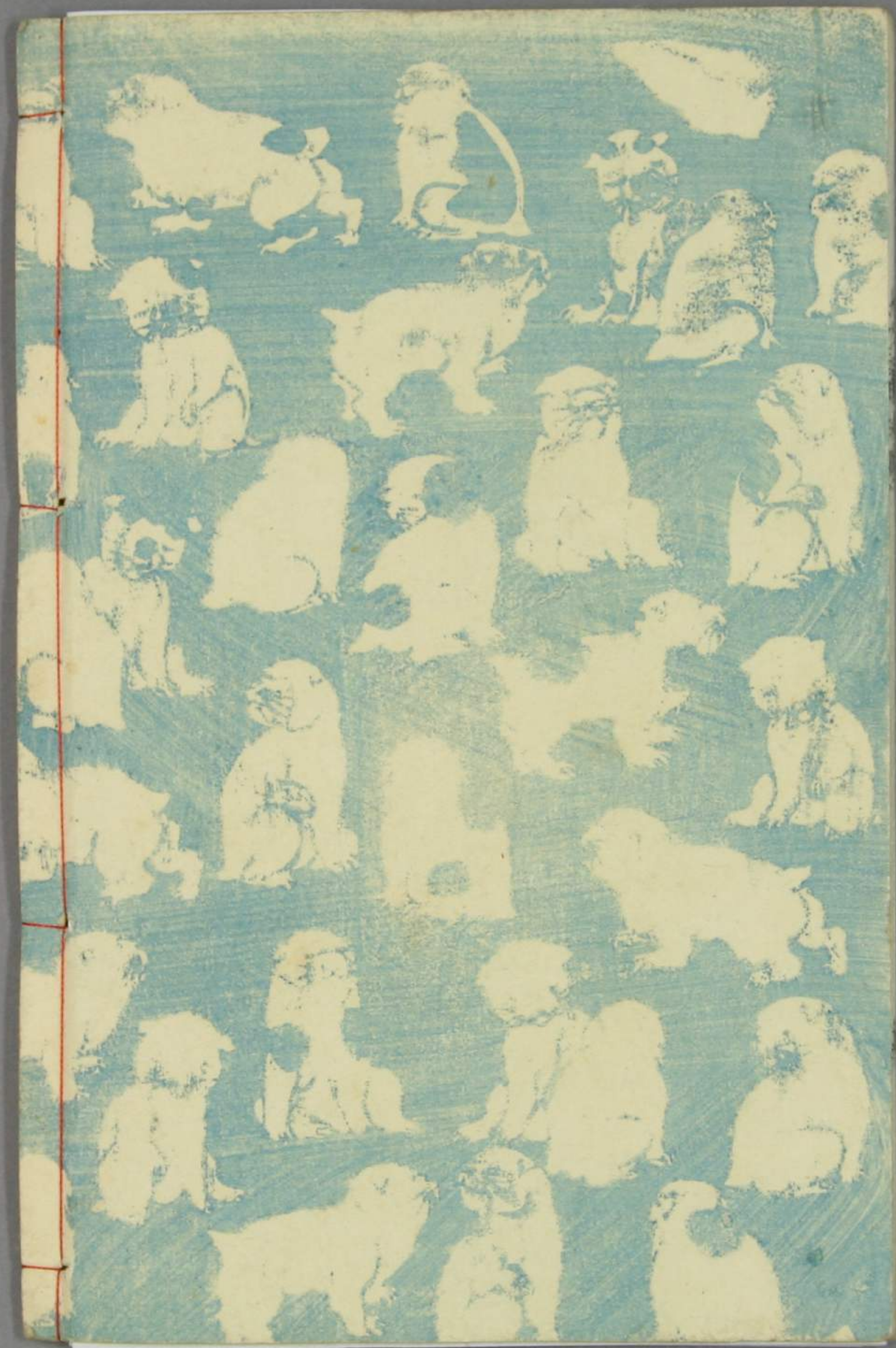
# 一陽齋豐豆園畫圖



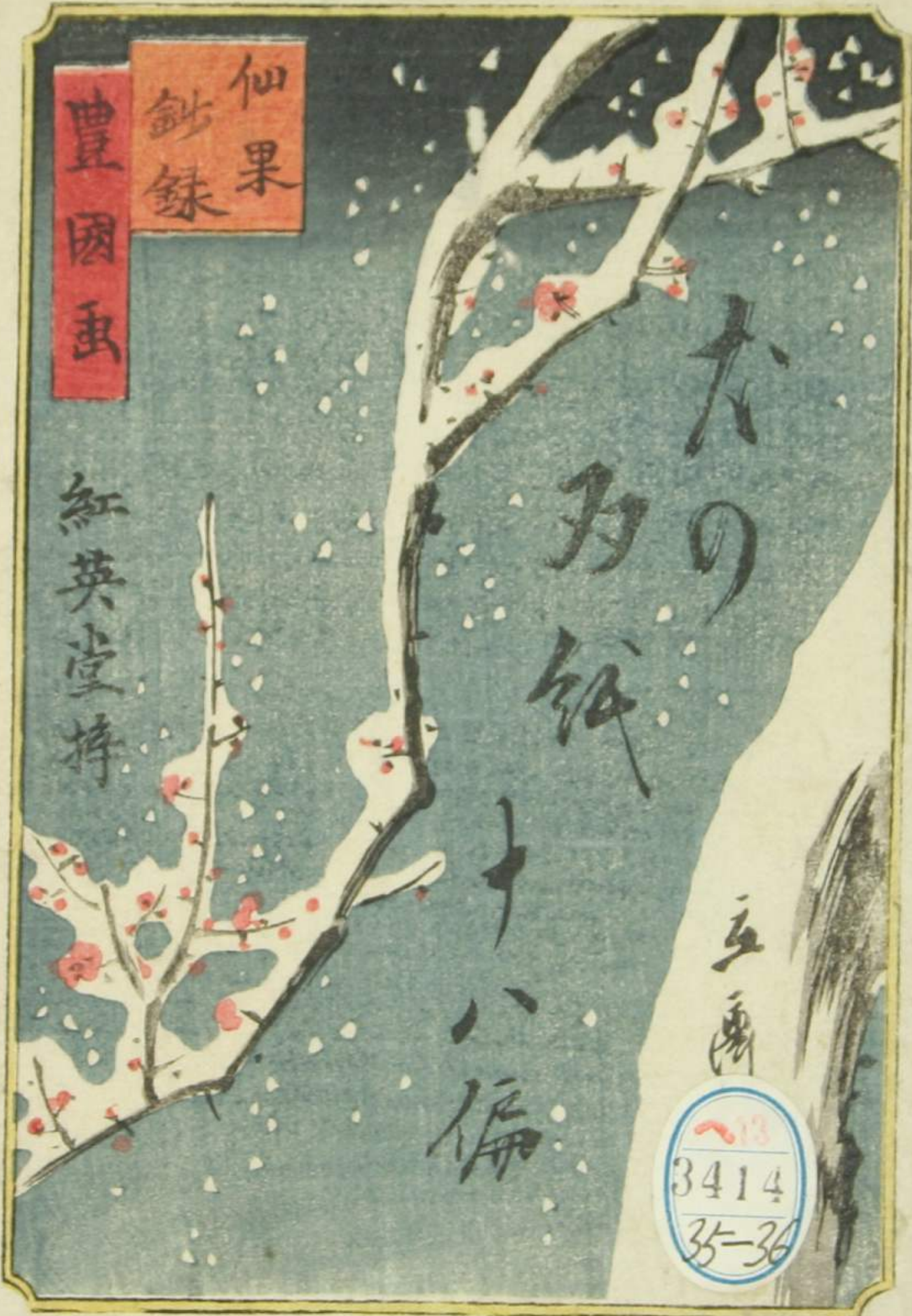
# 嘉永五壬子新春新鐫目錄

大晦日曙卓紙 上編 京山作 十八編 國政画	大傳 犬の草紙 十編 仙果錄 三編 仙果錄 文正 古今草紙答 七編 仙果作 八編 國輝画	御贄美少年始 六編 一九錄 國輝画	俠家傳你摸略説 六編 西馬譯 國輝画	嶋巡浪間朝日奈 三編 種員譯 四編 國輝画	府郷御江台繪圖 大日本國郡輿地全圖 六編 長尾
新敷田舎物語 六編 一九作 七編 國輝画	連理翅山雞奇縁 初編 西馬補 二編 國政画	富士額天人於七 二編 仙果作 芳虎画	春柳錦花四 三編 一九錄 四編 國輝画	地本 錦繪 東都南傳馬町下目 萬屋吉藏	









仙果  
鈔録  
豊國画

紅英堂持

大の  
為紙

十八偏

五画

13  
3414  
35-36