



雪梅  
芳譚  
犬の草紙  
一名八犬傳

陽齋豊國画

13  
3414  
10

鳥吉板

五編下

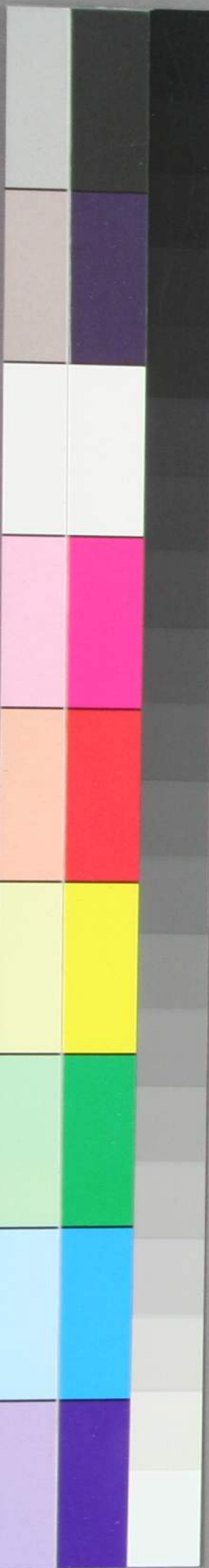


笠亭仙果鈔録

五編上

己酉  
孟陽

13  
3414  
9



笠亭仙果鈔録



五編上

己酉  
孟陽

13  
3414  
9

一陽齋豊國画

犬の尾の 不角

巴ハ

本名も

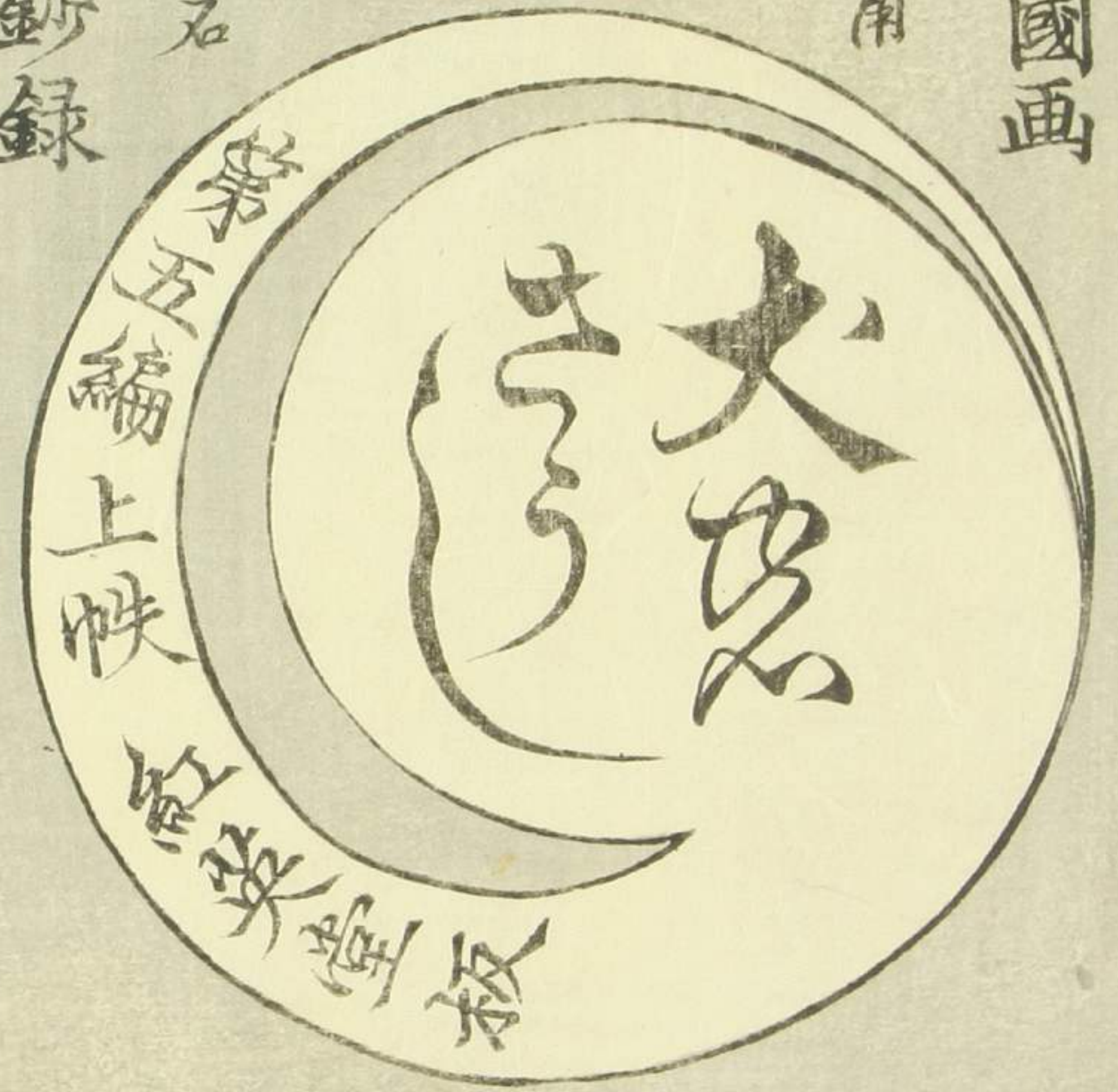
より尾の

一ッ巴ヤ

雪み犬

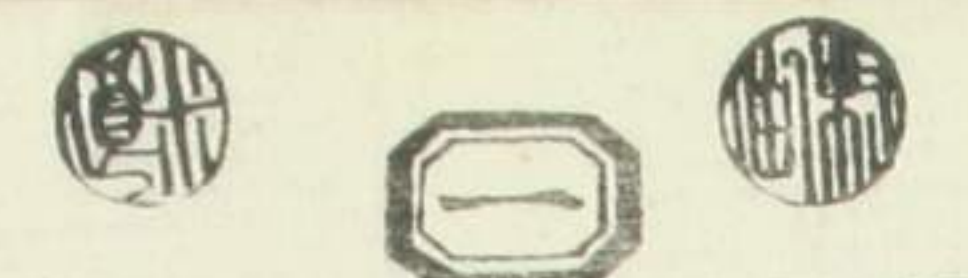
靴石

笠亭仙果鈔録



己酉孟春發販之魁

笠亭の仙果と云ふ音は、業平朝臣夜通雅の道行されても道風  
 自筆の朝詠集廿二巻を所持する曲者將の二子大坊丸が、いふ所に入らざりしを今  
 の統物大將監の流行時世時代をまねた少計年殊月日用わが豆腐小酒水を  
 加ねて、大鷲織の着附裏の袴九腰を出入れぬ道理さして其年月小あ  
 せむ實録小せられ仕組小難義出来てあつても、もろぬ夏又是画具小膠  
 水が過てむの見る類小比、か、掛緒の烏帽子着て嘘の多ぬ窮屈小似  
 たり。され此五編小載る永壽王殿赦免せられ鎌倉小下りぬ、六宝徳元年二月  
 あり。歌道の師の夏をさし鎌倉大草紙小記、と云ふ十三歳とあり。あつる小大  
 須賀、岩作が嘉吉元年より九年程母の安否を訪ひせ、他國小潜居より  
 るはれ、若君の鎌倉下りを六年をあて一兩年、手紙や瘡で工夫とせ、あつのが作者  
 の用心も、さし酒水と膠水のか成るも共議の、さし但拙きら、さし時代衣履の上  
 下二本さしのよ、さしの用、さしのあ、さし入催さる、笠亭仙果述



大須賀の  
 正作の  
 参成  
 大須賀  
 正作  
 参成



大須賀  
 正作  
 参成

狗猫集  
 卷第九

けいごのひやうの神のほろ  
 けいごのひやうの神のほろ

貞徳



大須賀  
 信乃妻  
 破魔児



大耶麻道  
 異腹女弟也



實ハ  
 大河  
 義任

非義六下男  
 葺藏



長尾稻葉

長尾



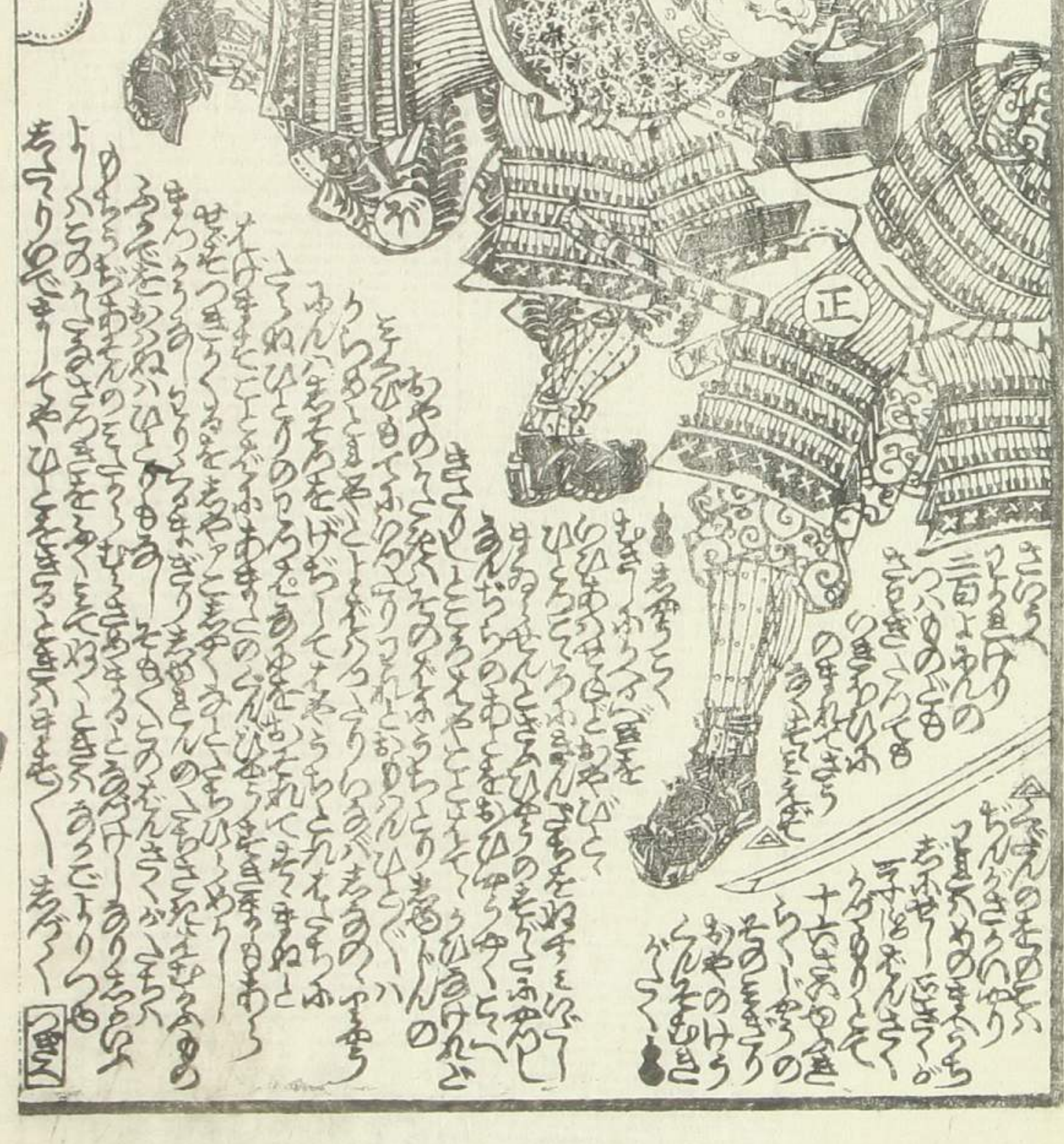
安王殿

春王殿

Handwritten text in a cursive script, likely a historical account or commentary, located at the top of the right page.



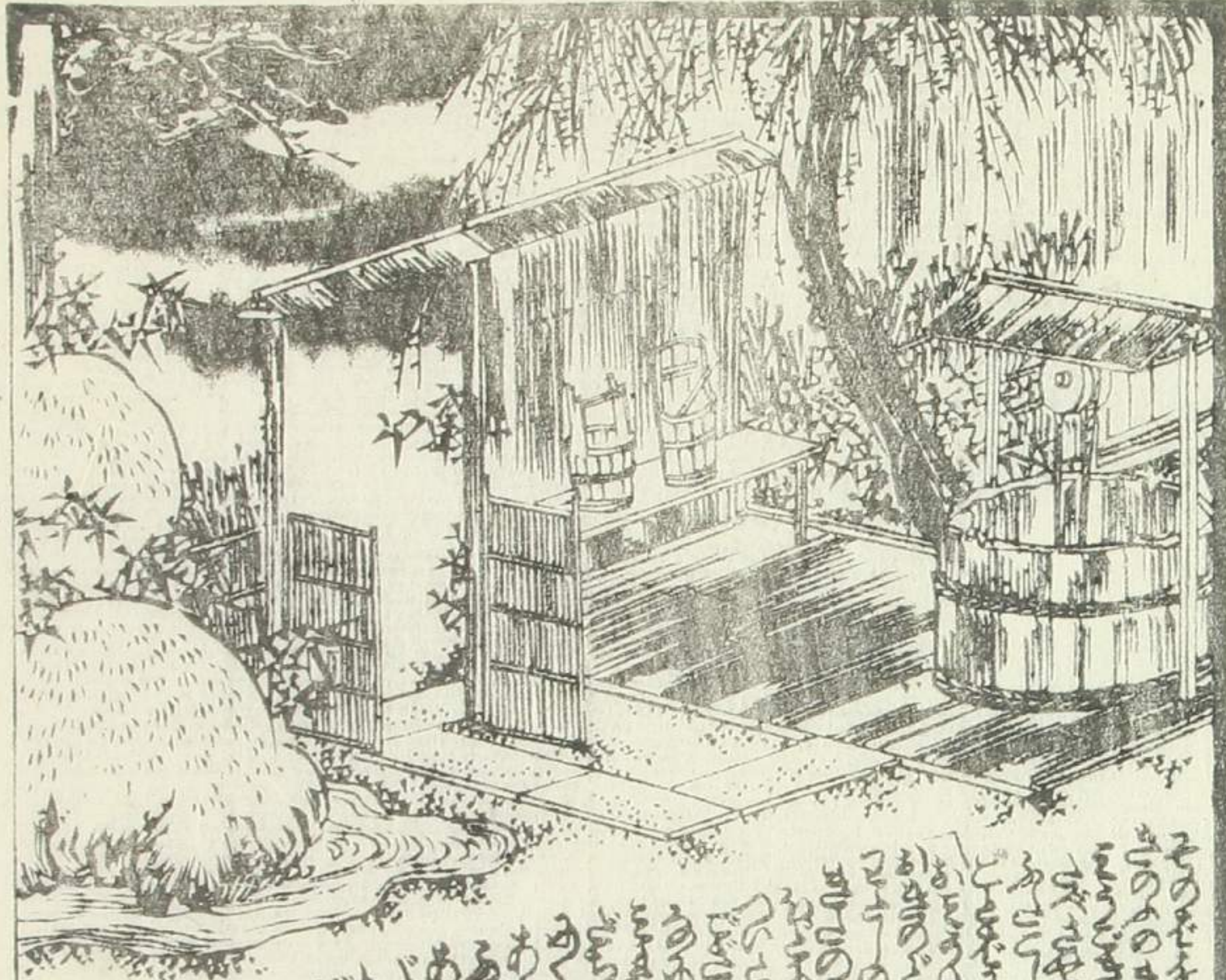
Handwritten text in a cursive script, likely a historical account or commentary, located at the top of the left page.





Handwritten text in a cursive script, likely a commentary or a poem, surrounding the illustration. The text is arranged in vertical columns, following the contours of the figure and the background elements.

Handwritten text in a cursive script, continuing the commentary or poem from the upper section. It is densely packed and follows the same vertical orientation as the text above.



Handwritten text in a cursive script, likely a transcription of a story or poem, located below the illustration of the building.



Handwritten text in a cursive script, likely a transcription of a story or poem, located to the left of the woman's illustration.









Vertical columns of Japanese text on the left side of the top page, likely a narrative or commentary related to the illustration.

Vertical columns of Japanese text on the right side of the top page, continuing the narrative or commentary.



Vertical columns of Japanese text on the left side of the bottom page, likely a narrative or commentary related to the illustration.

Vertical columns of Japanese text on the right side of the bottom page, continuing the narrative or commentary.

Handwritten text in a cursive script, likely a Japanese dialect or a specific form of shorthand, located at the top of the right page.



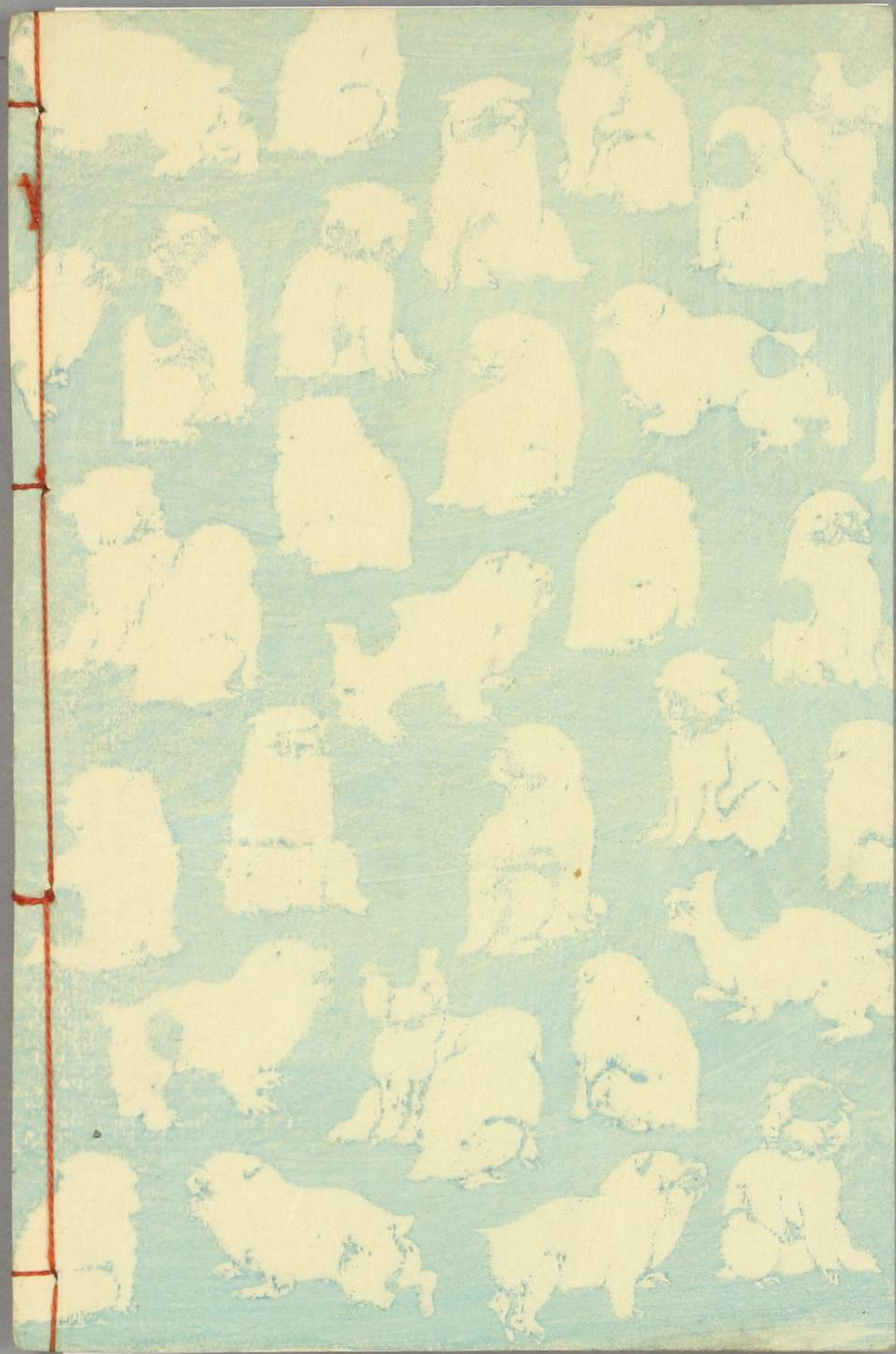
Handwritten text in a cursive script, likely a Japanese dialect or a specific form of shorthand, located at the bottom of the right page.

Handwritten text in a cursive script, likely a Japanese dialect or a specific form of shorthand, located at the top of the left page.



Handwritten text in a cursive script, likely a Japanese dialect or a specific form of shorthand, located at the bottom of the left page.







雪梅  
芳譚  
犬の草紙  
一名八犬傳

陽齋豊国画

五編下

13  
3414  
10

鳥吉板









Handwritten text in vertical columns, likely a list or index of items, possibly related to the illustrations on the page.

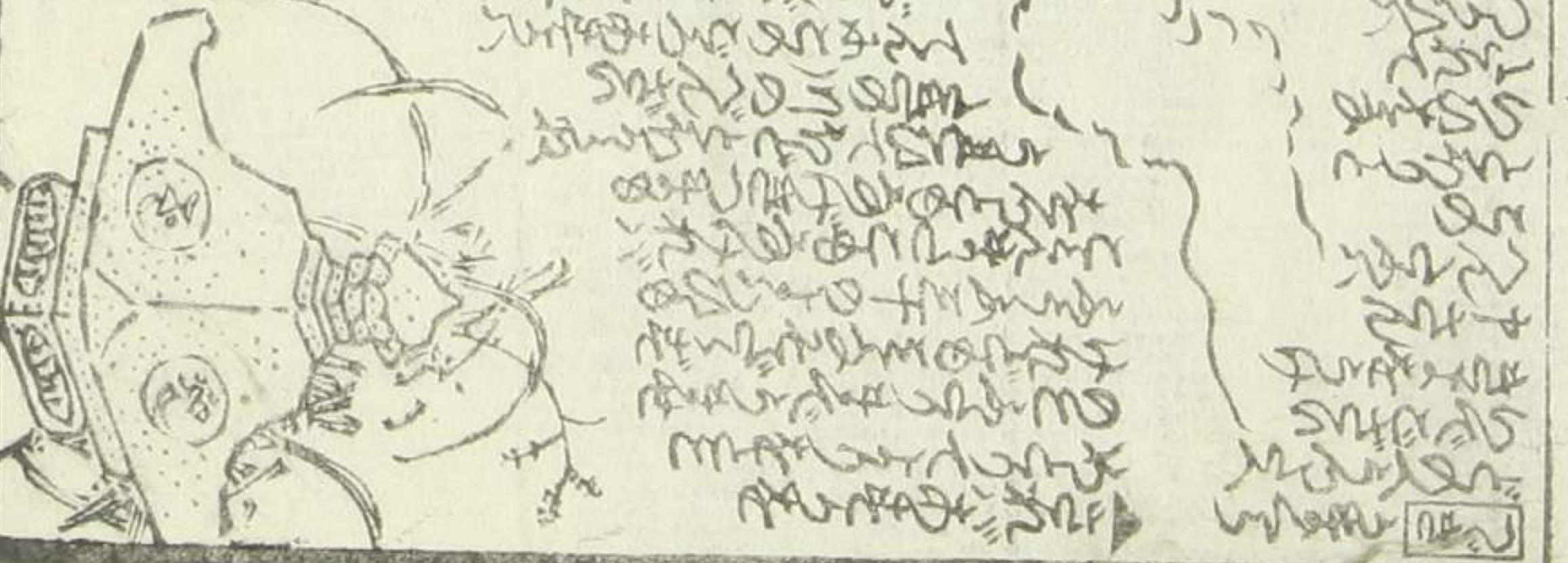


Handwritten characters on the left margin of the left page.

Handwritten characters on the left margin of the left page.



Handwritten text in vertical columns, likely a list or index of items, possibly related to the illustrations on the page.



Handwritten characters on the right margin of the right page.

Handwritten characters on the right margin of the right page.







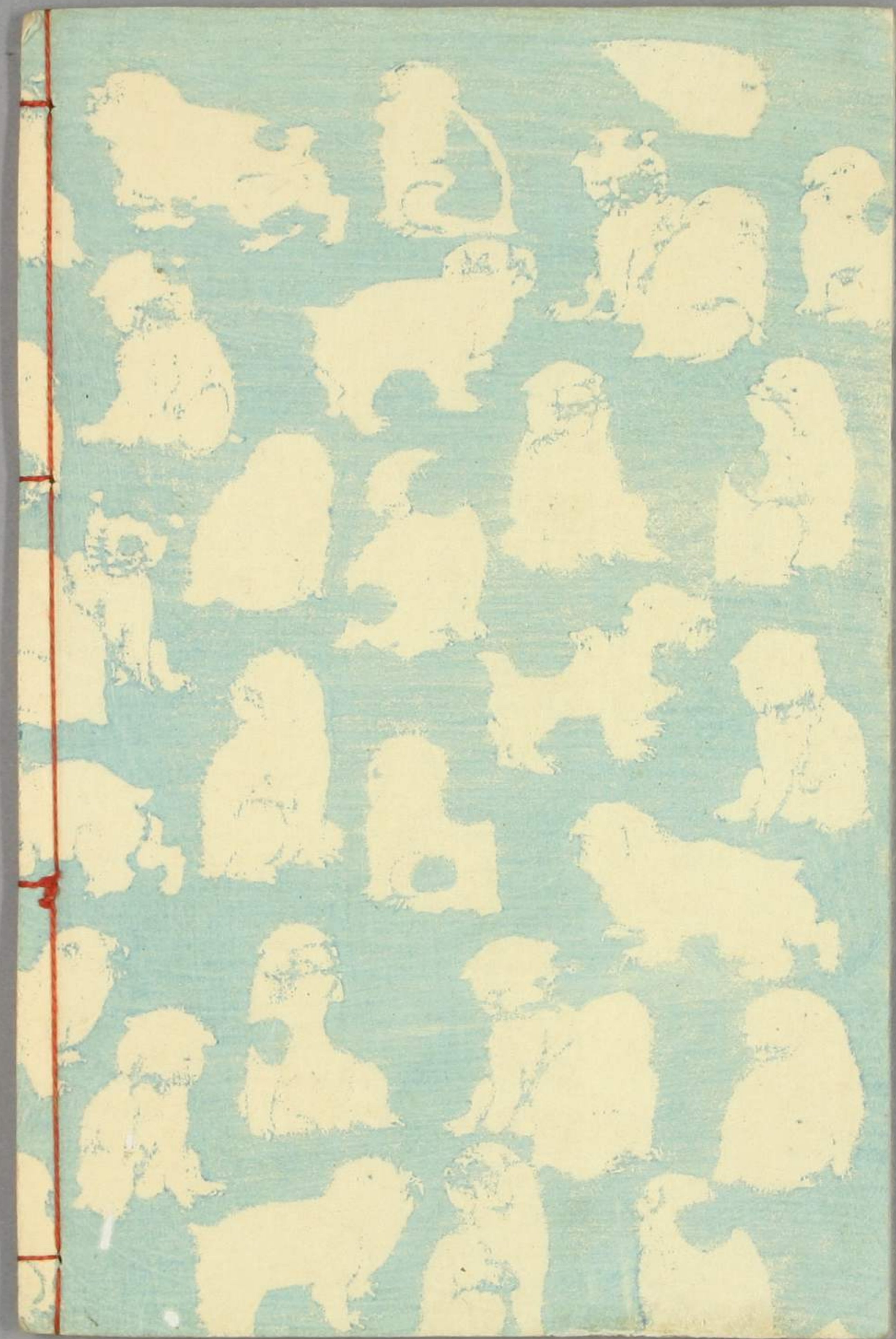












面白中倍  
聖の下  
裏の  
紅

犬張

新  
五編

笠亭仙果鈔録  
一陽齋豊國画

中橋  
萬屋  
壽梓

3414  
9-10

