



雪梅  
芳譚  
大の草紙

名八大傳

一陽齋豊國画

三編下

~13  
3414  
6

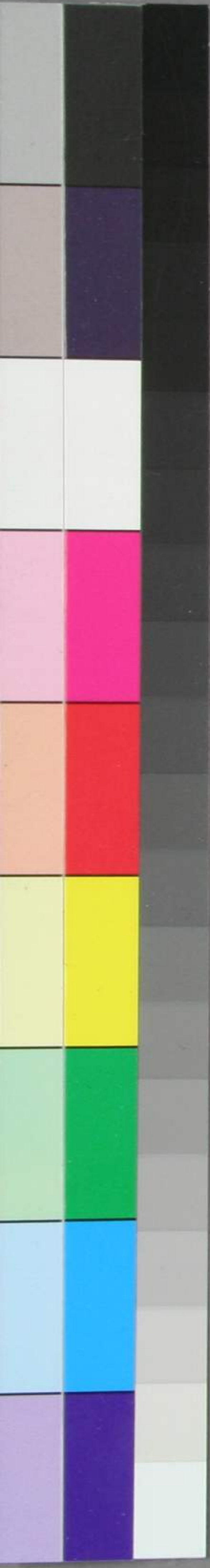


笠亭仙果鈔録

葛吉板

三編上

~13  
3414  
5





笠亭仙果鈔録

葛吉板

三編上

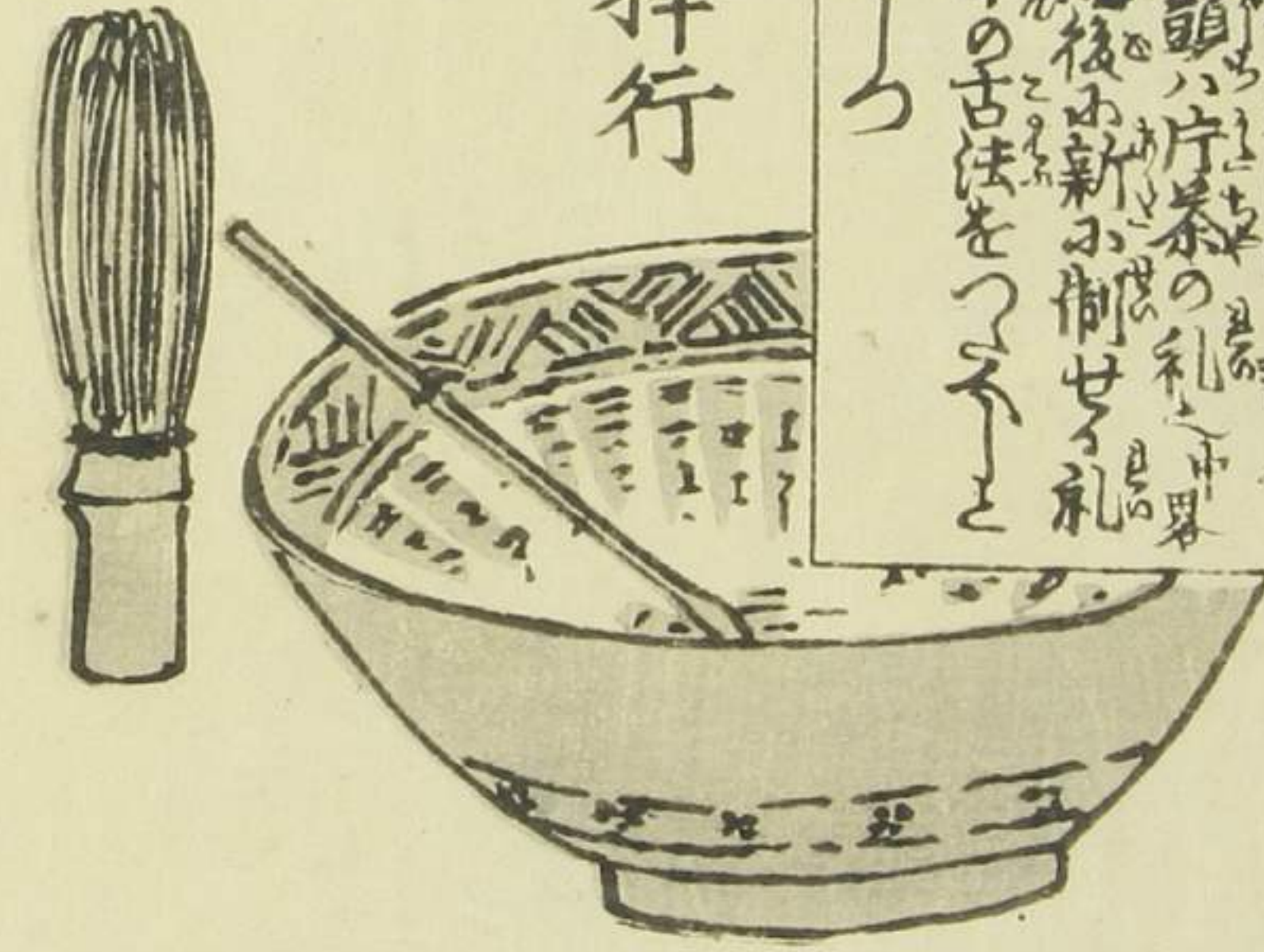
13  
3414  
5

第二編 軒八郎切腹の条... 房後志輝 唯小里見記... 礼を大將と... 擬す小里見家の俗... 少くもわは... 又編ふも注...  
軒八郎切腹の条... 房後志輝 唯小里見記... 礼を大將と... 擬す小里見家の俗... 少くもわは... 又編ふも注...

# 犬紙

紅英堂梓行

はら



仙果筆

仙果鈔録  
豊國画圖

三編  
上帙



往昔西土の周成王桐葉を... 戯らばを周公宣問... 春秋のありて... 彼客僧を汝が... 此三編の郷見... 然らば虚言と戯... 亦て譚源の玄中... さらば彼俳人... 月雪花郭公... 一帙面白き虚...  
往昔西土の周成王桐葉を... 戯らばを周公宣問... 春秋のありて... 彼客僧を汝が... 此三編の郷見... 然らば虚言と戯... 亦て譚源の玄中... さらば彼俳人... 月雪花郭公... 一帙面白き虚...

嘉永二年酉青陽





知

六  
三

磐作妻  
明日香

大須賀磐作 成  
信濃國千曲  
温泉 ぬる刀瘡を  
湯治す 圖



Handwritten Japanese text (kuzushiji) located below the illustration on the left page. The text is arranged in vertical columns, reading from right to left. It appears to be a narrative or dialogue related to the scene above.



Handwritten Japanese text (kuzushiji) located below the illustration on the right page. The text is arranged in vertical columns, reading from right to left. It appears to be a narrative or dialogue related to the scene above.

Handwritten text in a cursive script, likely a form of shorthand or a specific dialect, arranged in vertical columns. The text is dense and fills most of the page area.



11

11

Handwritten text in a cursive script, similar to the left page, arranged in vertical columns. The text is dense and fills most of the page area.



11

11





兼土咄平  
再少備田  
使者

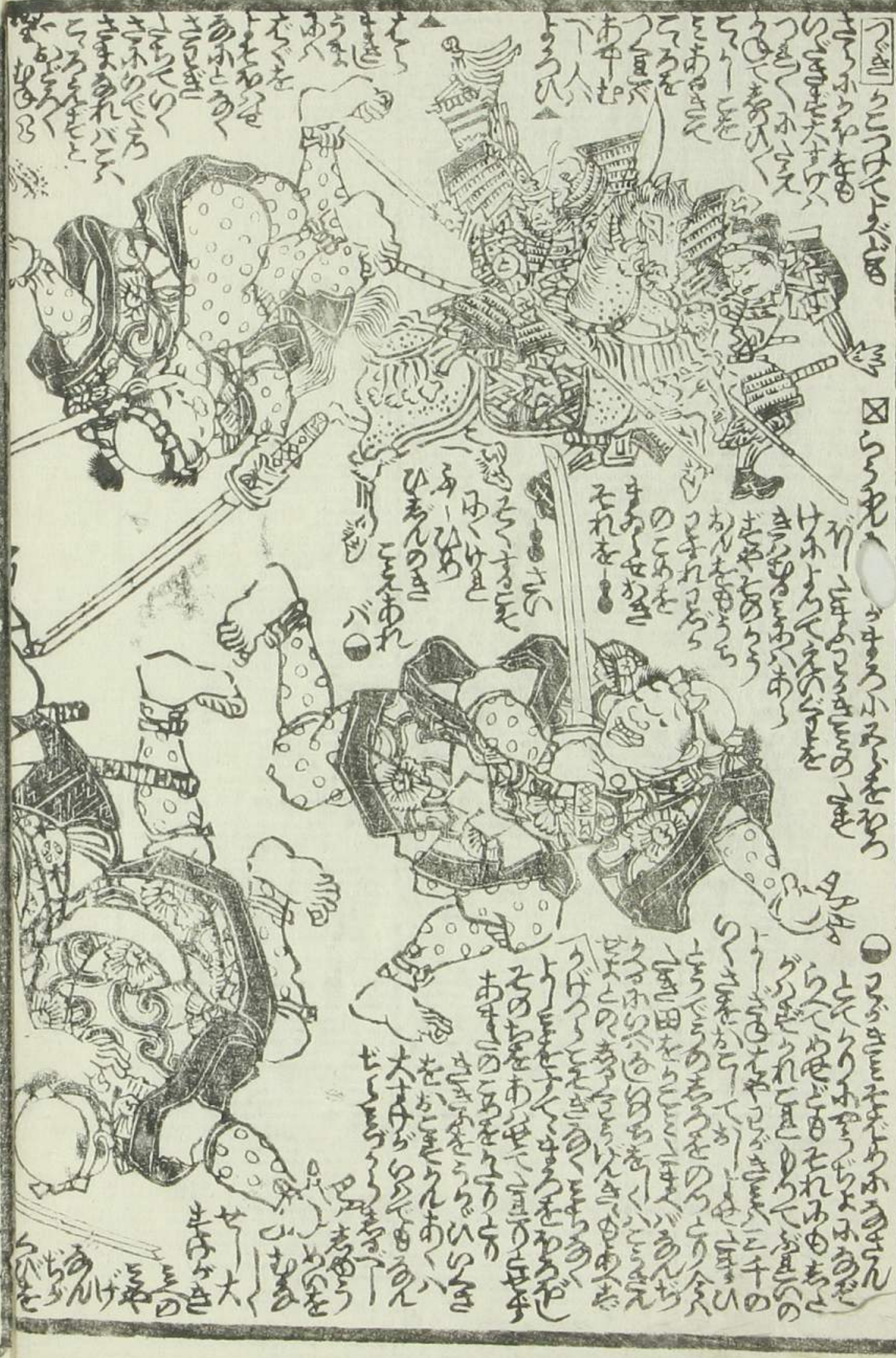
Vertical text columns on the left page, likely a commentary or dialogue related to the illustration above.

Vertical text columns at the top of the right page, likely a commentary or dialogue related to the illustration above.

Vertical text columns on the right page, likely a commentary or dialogue related to the illustration above.







さうしやうを  
ついでに  
さうしやうを  
ついでに  
さうしやうを  
ついでに  
さうしやうを  
ついでに

さうしやうを  
ついでに  
さうしやうを  
ついでに  
さうしやうを  
ついでに  
さうしやうを  
ついでに

さうしやうを  
ついでに  
さうしやうを  
ついでに  
さうしやうを  
ついでに  
さうしやうを  
ついでに

さうしやうを  
ついでに  
さうしやうを  
ついでに  
さうしやうを  
ついでに  
さうしやうを  
ついでに



さうしやうを  
ついでに  
さうしやうを  
ついでに  
さうしやうを  
ついでに  
さうしやうを  
ついでに

さうしやうを  
ついでに  
さうしやうを  
ついでに  
さうしやうを  
ついでに  
さうしやうを  
ついでに

さうしやうを  
ついでに  
さうしやうを  
ついでに  
さうしやうを  
ついでに  
さうしやうを  
ついでに

さうしやうを  
ついでに  
さうしやうを  
ついでに  
さうしやうを  
ついでに  
さうしやうを  
ついでに











雪梅 大の草紙  
芳譚

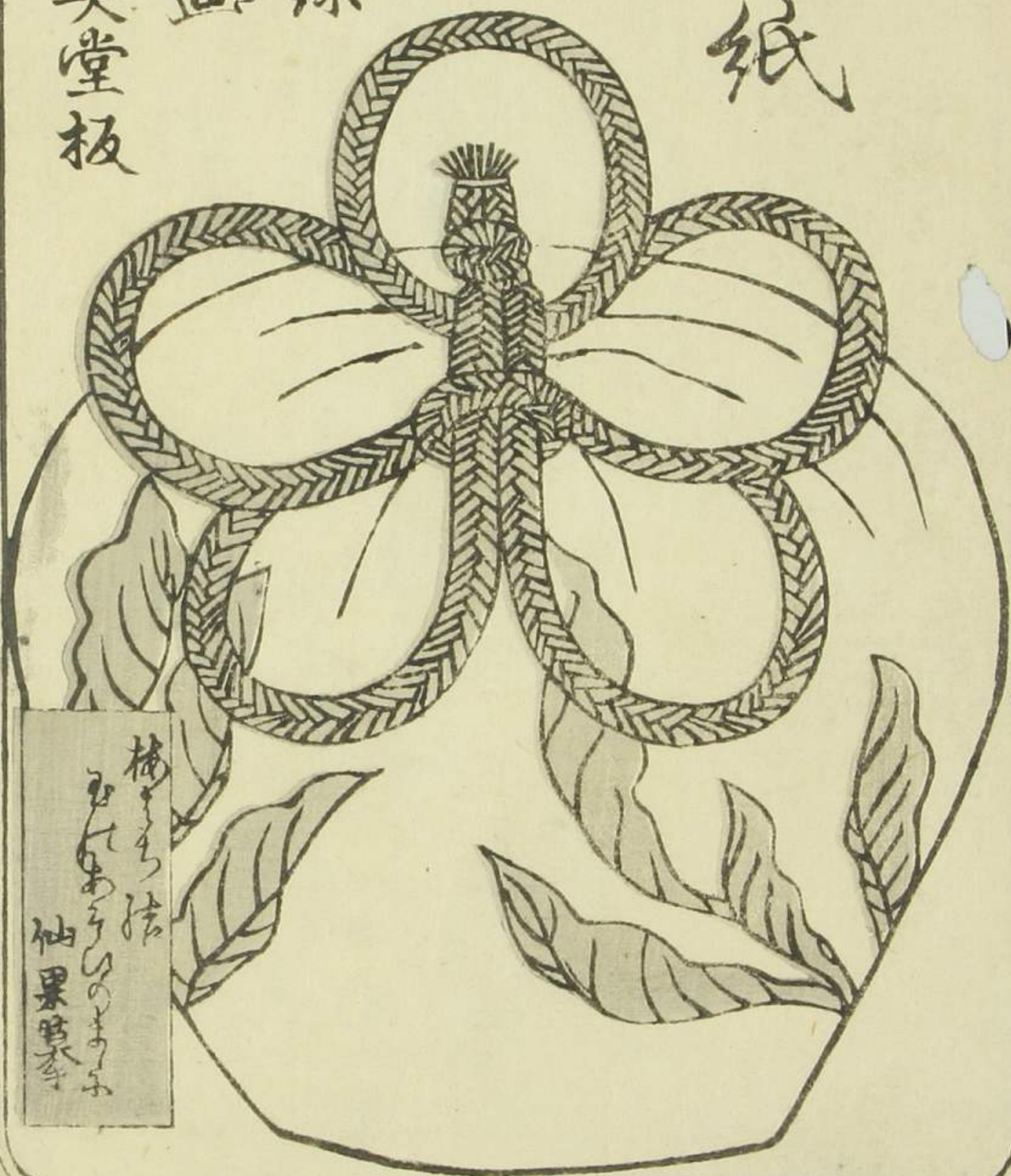
名八天傳

一陽齋豊國画

二編下

3414  
6

犬の  
草紙  
三編  
下  
仙果録  
豊國画  
紅英堂板



梅  
紅英堂  
袖果録

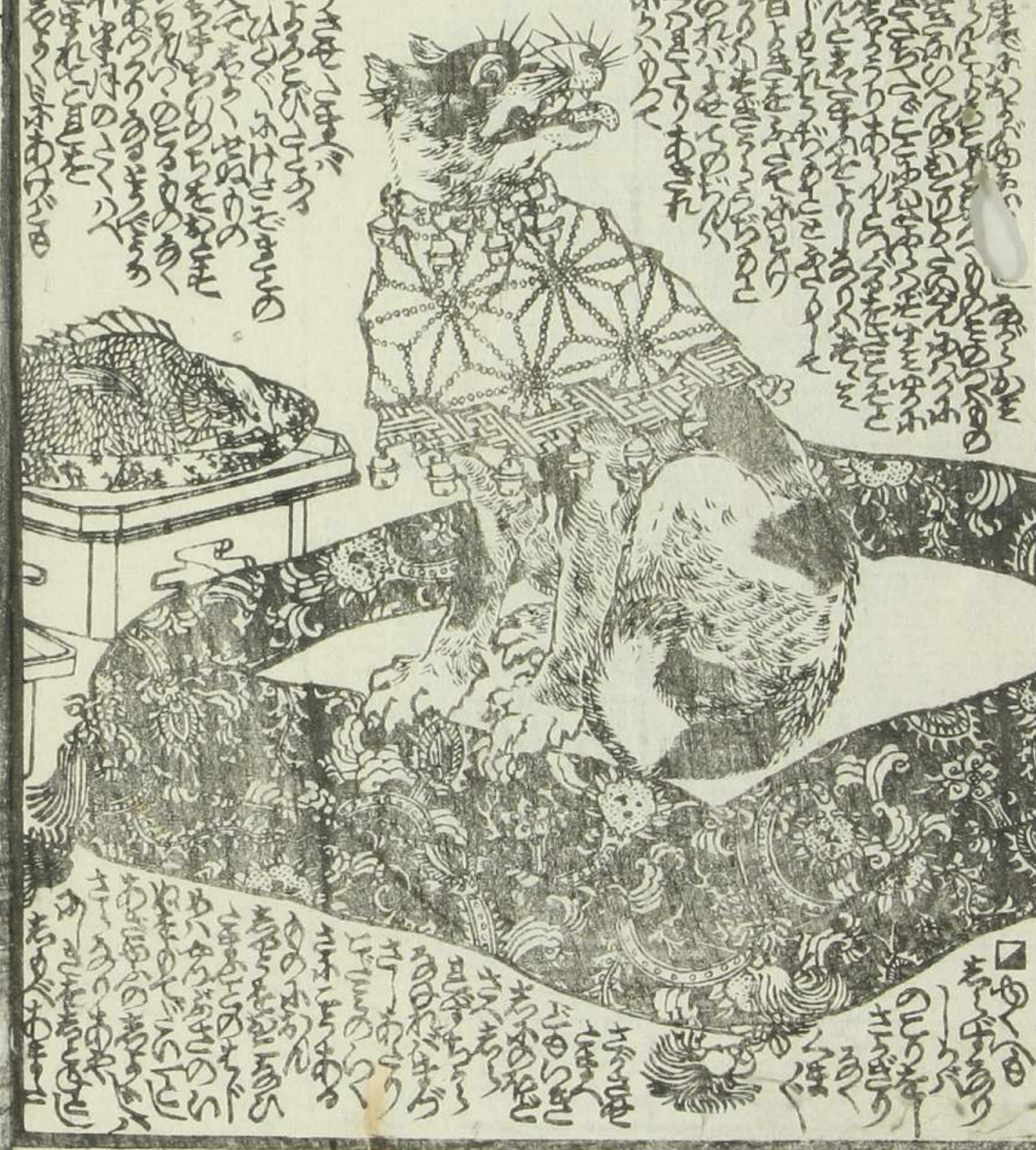


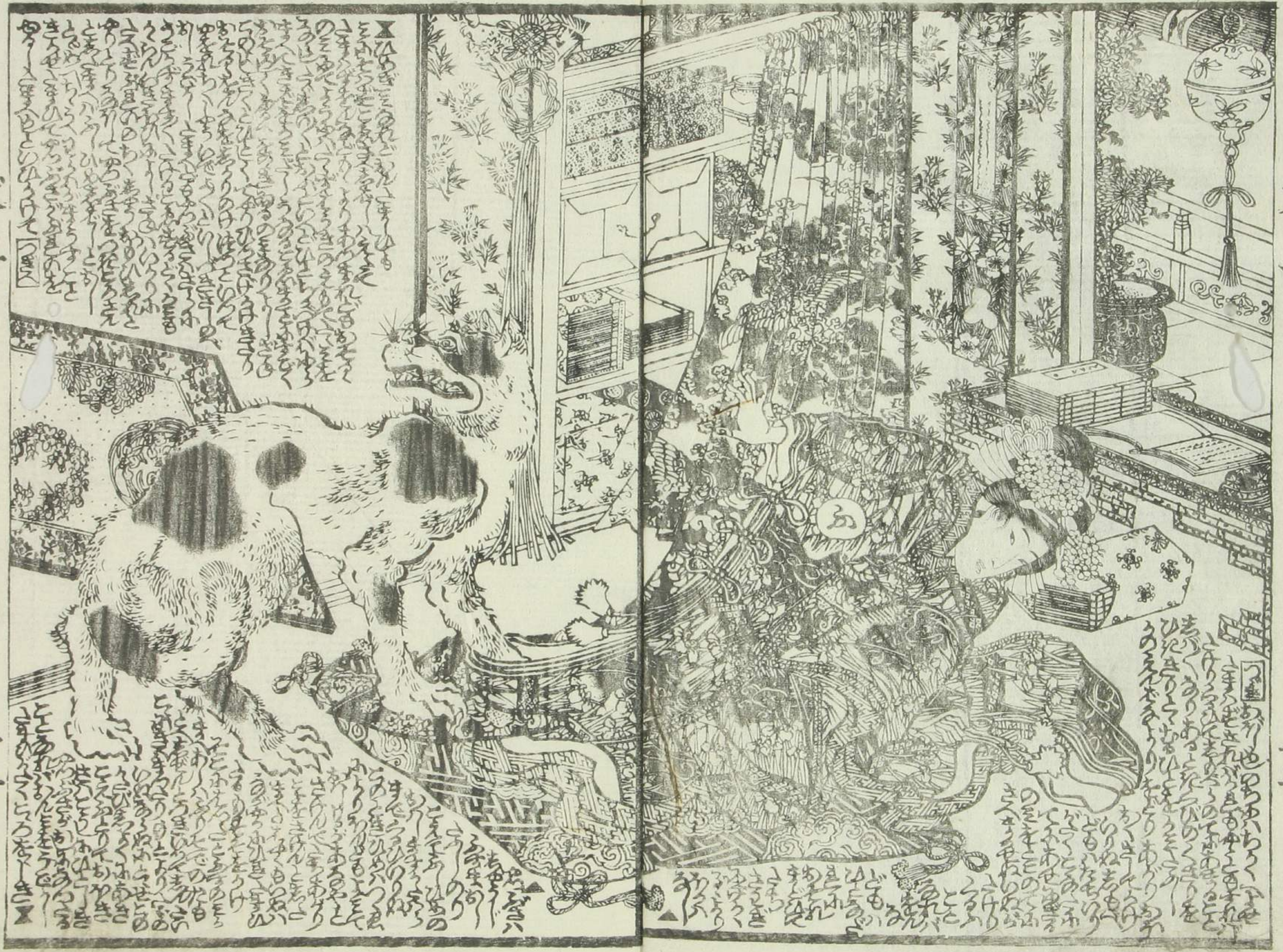


Vertical columns of handwritten Japanese text, likely a narrative or commentary, surrounding the illustration on the left page.



Vertical columns of handwritten Japanese text, likely a narrative or commentary, surrounding the illustration on the right page.

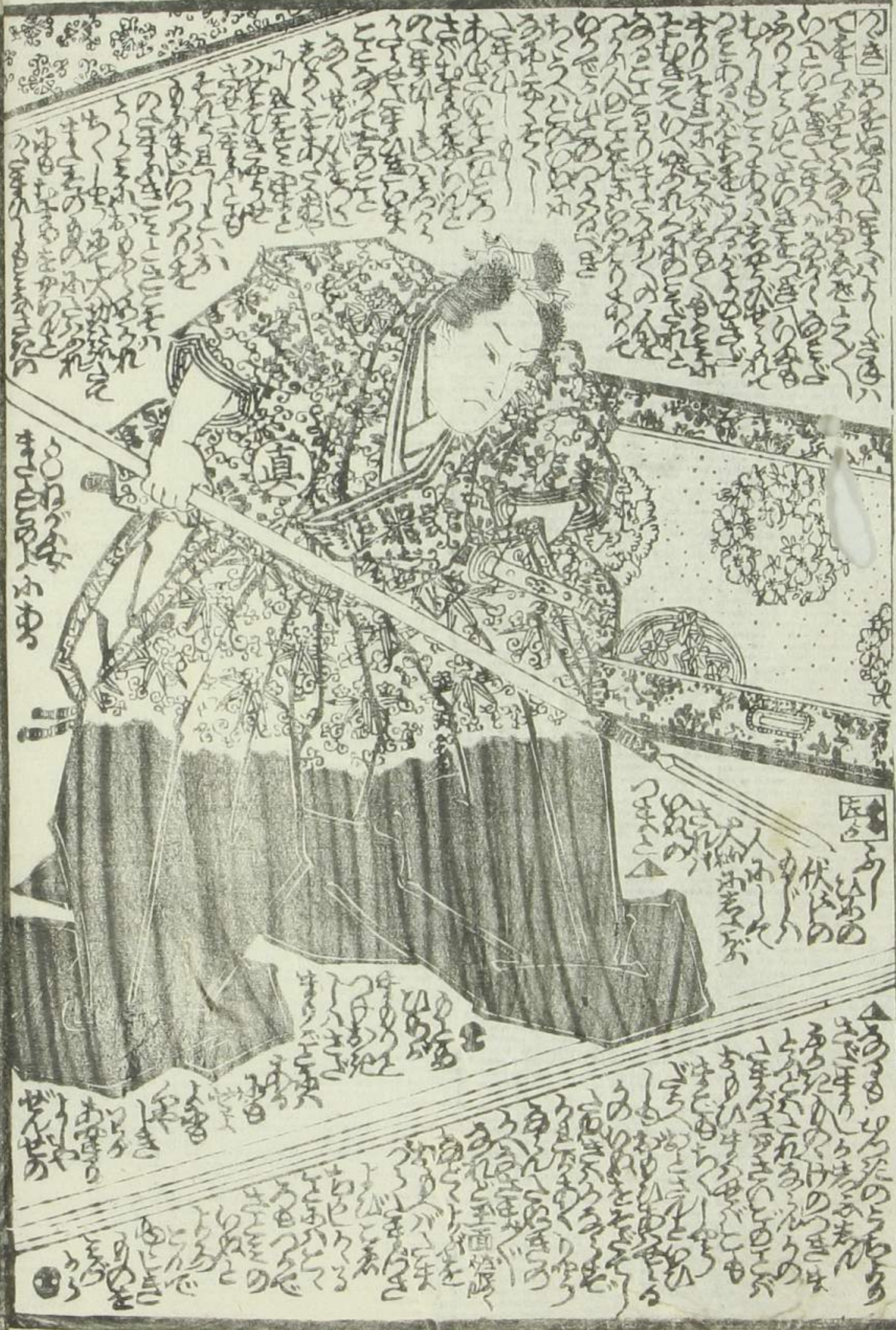




Vertical text in the upper left corner, likely a chapter title or introductory text.

Vertical text in the lower left corner, likely a chapter title or introductory text.

Vertical text in the lower right corner, likely a chapter title or introductory text.



一三

一四

一三

一四



Handwritten Japanese text in vertical columns, located in the upper left quadrant of the page. The text is written in a cursive style, typical of Edo-period manuscripts.

Handwritten Japanese text in vertical columns, located in the lower left quadrant of the page. The text is written in a cursive style, typical of Edo-period manuscripts.

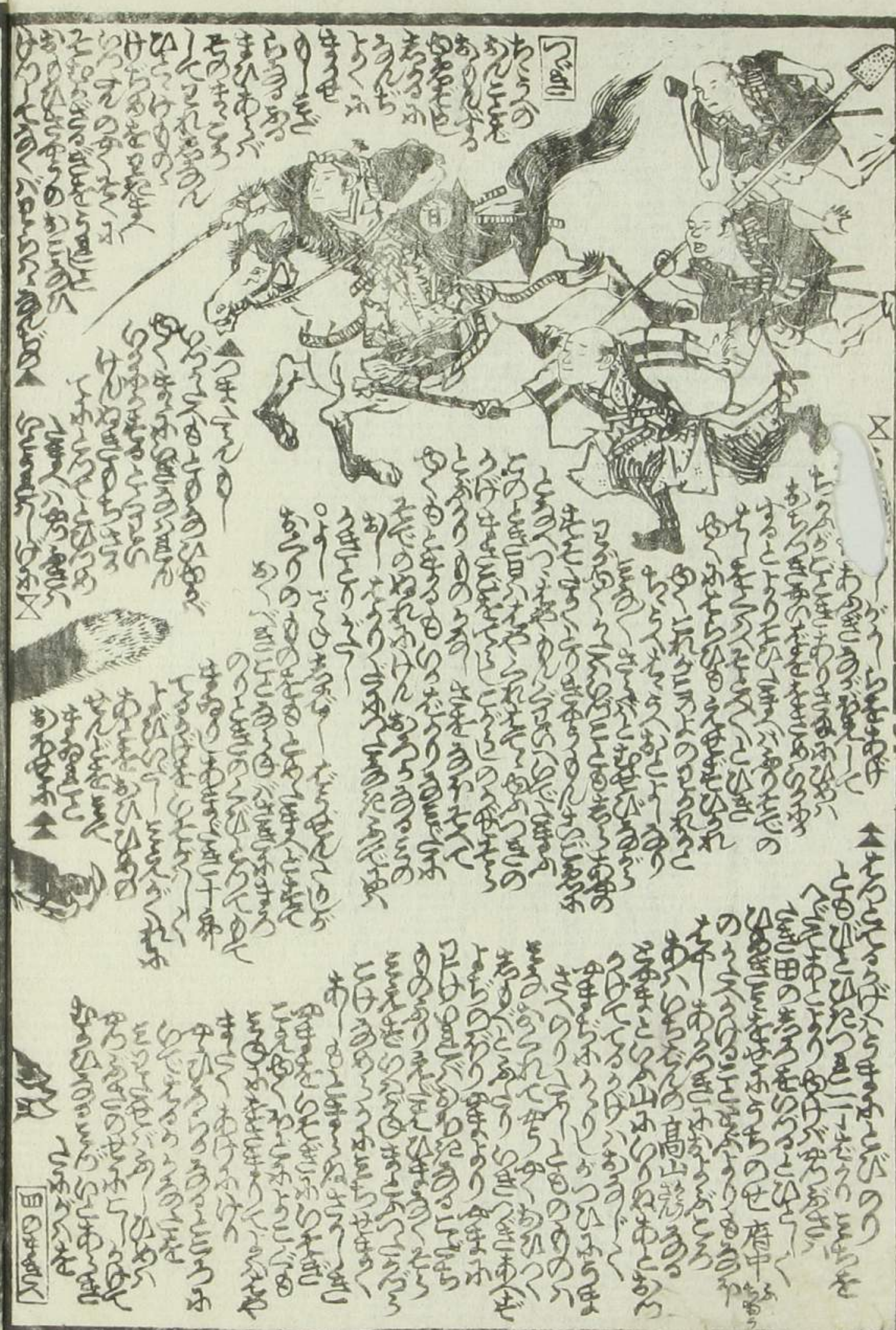
Handwritten Japanese text in vertical columns, located in the upper right quadrant of the page. The text is written in a cursive style, typical of Edo-period manuscripts.

Handwritten Japanese text in vertical columns, located in the lower right quadrant of the page. The text is written in a cursive style, typical of Edo-period manuscripts.



The first part of the text is written in a vertical column on the left side of the page, starting with the word 'The first part'. It describes the scene and the woman's journey.

The second part of the text is written in a vertical column on the right side of the page, starting with the word 'The second part'. It continues the narrative, mentioning the dog and the woman's actions.



The text in the upper right section is written in a vertical column, starting with the word 'The third part'. It describes the group of men and their activities.

The text in the lower right section is written in a vertical column, starting with the word 'The fourth part'. It concludes the narrative, mentioning the outcome of the events.



山は雲に隠れ  
 谷は霧に覆はれ  
 鳥は空を舞ひ  
 草は風に靡けり  
 遠き山に松あり  
 近き山に竹あり  
 水は清く流るる  
 雲は白く巻く

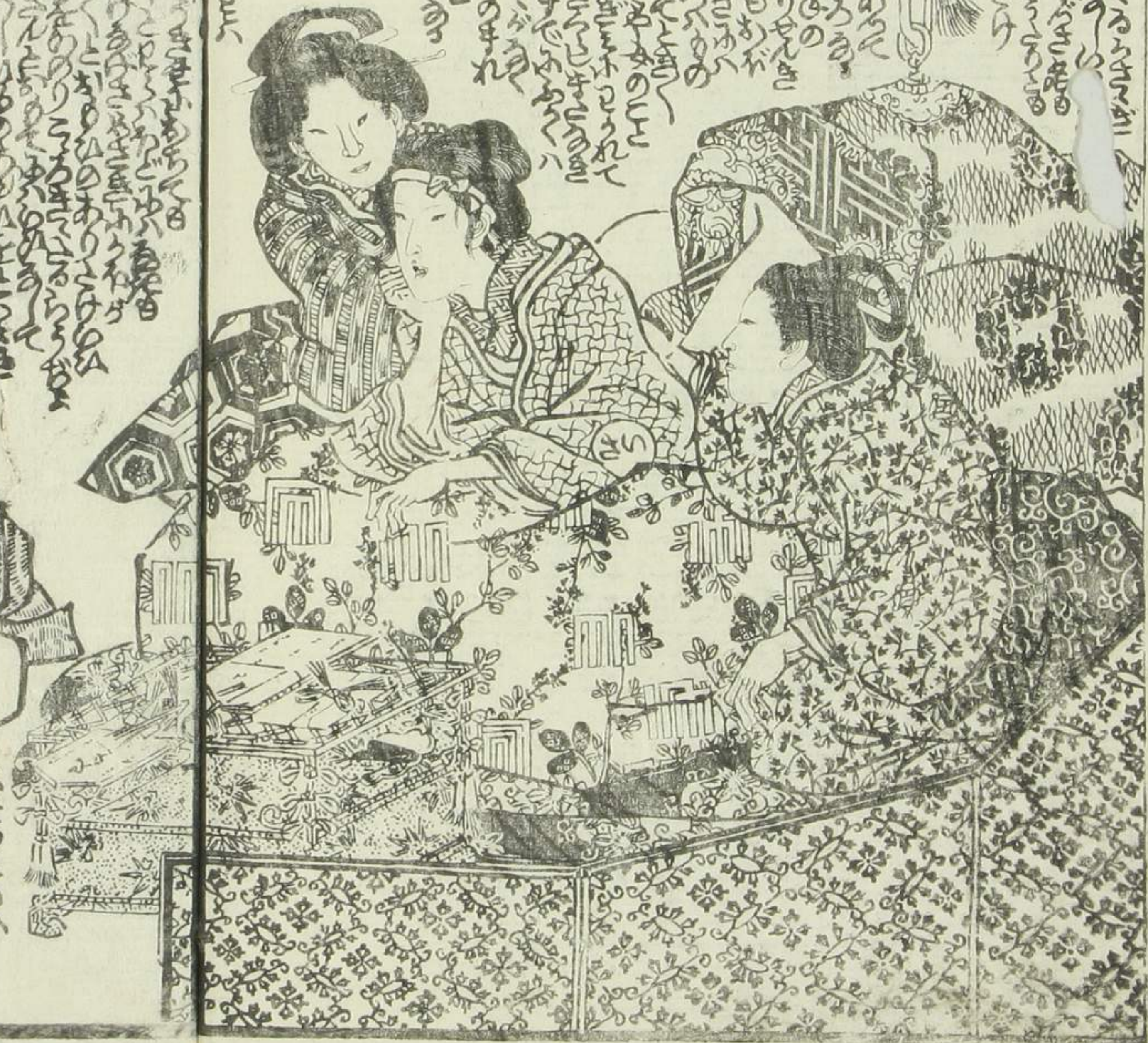


山は高くそそり  
 谷は深く落ち  
 鳥は鳴き渡る  
 草は緑に茂り  
 水は清く流るる  
 雲は白く巻く

山は高くそそり  
 谷は深く落ち  
 鳥は鳴き渡る  
 草は緑に茂り  
 水は清く流るる  
 雲は白く巻く

Vertical text column on the top right page, written in a cursive Japanese calligraphic style.

Vertical text columns on the top left page, written in a cursive Japanese calligraphic style.



Vertical text columns on the middle left page, written in a cursive Japanese calligraphic style.



Vertical text columns on the bottom left page, written in a cursive Japanese calligraphic style.







Vertical columns of handwritten Japanese text, likely a monologue or dialogue, positioned above the man's head.

Vertical columns of handwritten Japanese text, likely a monologue or dialogue, positioned below the man's head.



Vertical columns of handwritten Japanese text, likely a monologue or dialogue, positioned above the woman's head.

Vertical columns of handwritten Japanese text, likely a monologue or dialogue, positioned below the woman's head.

嘉永五年壬子新鐫目錄

大日本國郡鎮地圖 大日本書 六枚づつ 二枚はき	府郷御江戸繪圖 大日本書 六枚づつ	嶋巡浪間朝奈 三編 種員書 四編 國輝画	俠愛傳仙摸路説 六編 西馬譯 七編 國輝画	御賢美少年始 六編 一九録 七編 國輝画	大傳 犬の草紙 七編 仙果録 八編 國輝画	大晦日曙草紙 七編 京山作 八編 國政画	新教田舎物語 六編 一九作 七編 國輝画	連理翅山雞奇縁 初編 西馬補 二編 國政画	富士額天人七冊 二 仙果作 芳虎画	春柳錦花 三編 一九録 四編 國輝画	地本 錦繪 東都南傳馬町一丁目 葛屋吉藏
----------------------------------	-------------------------	----------------------------	-----------------------------	----------------------------	-----------------------------	----------------------------	----------------------------	-----------------------------	-------------------------	--------------------------	----------------------------



豊國畫 仙果鈔録

九三

二



大純中紙

三編

仙果作

豊國画



紅英堂梓

酉

新刻

13  
3414  
5-6