



日本永代藏 二

大福新長者教

3263  
2

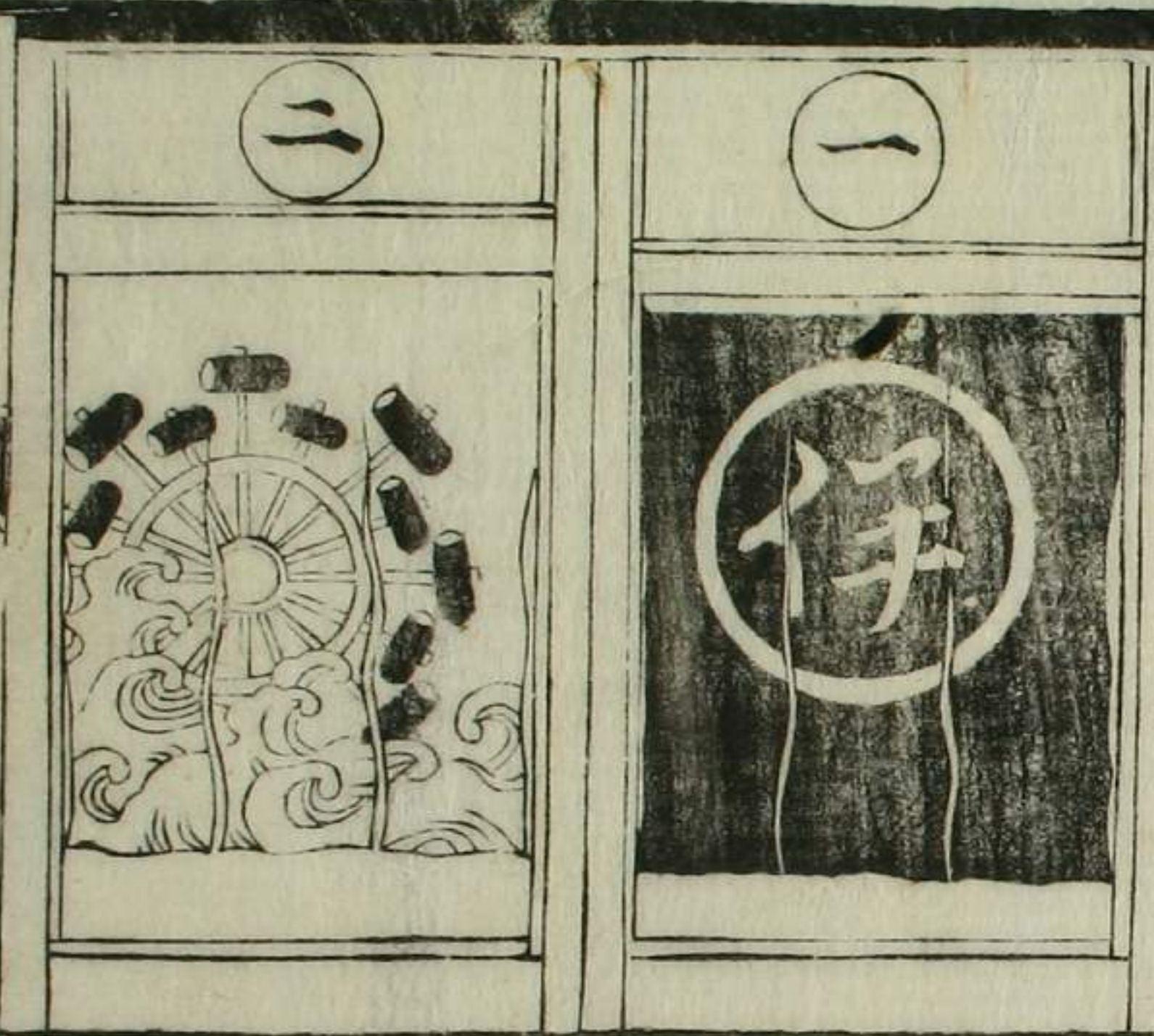




特  
3263  
2

日本永代巻

目録 二



多野山借後縁の巻  
 大坂ふかたれおたけ  
 三世おふりあつり  
 猫

伊体かこし  
 山坂ふかたれおたけ  
 三車

























Handwritten text in a cursive script, likely a historical document or manuscript. The text is written in a dense, flowing style across approximately 15 lines.

Handwritten title or section header, possibly indicating the subject of the document.

Handwritten text in a cursive script, continuing the narrative or record from the previous page. The text is written in a dense, flowing style across approximately 15 lines.

Handwritten text in a cursive script, likely a historical document or manuscript. The text is written in a dense, flowing style across approximately 15 lines.







九  
 十  
 十一  
 十二  
 十三  
 十四  
 十五  
 十六  
 十七  
 十八  
 十九  
 二十  
 二十一  
 二十二  
 二十三  
 二十四  
 二十五  
 二十六  
 二十七  
 二十八  
 二十九  
 三十  
 三十一  
 三十二  
 三十三  
 三十四  
 三十五  
 三十六  
 三十七  
 三十八  
 三十九  
 四十  
 四十一  
 四十二  
 四十三  
 四十四  
 四十五  
 四十六  
 四十七  
 四十八  
 四十九  
 五十  
 五十一  
 五十二  
 五十三  
 五十四  
 五十五  
 五十六  
 五十七  
 五十八  
 五十九  
 六十  
 六十一  
 六十二  
 六十三  
 六十四  
 六十五  
 六十六  
 六十七  
 六十八  
 六十九  
 七十  
 七十一  
 七十二  
 七十三  
 七十四  
 七十五  
 七十六  
 七十七  
 七十八  
 七十九  
 八十  
 八十一  
 八十二  
 八十三  
 八十四  
 八十五  
 八十六  
 八十七  
 八十八  
 八十九  
 九十  
 九十一  
 九十二  
 九十三  
 九十四  
 九十五  
 九十六  
 九十七  
 九十八  
 九十九  
 一百



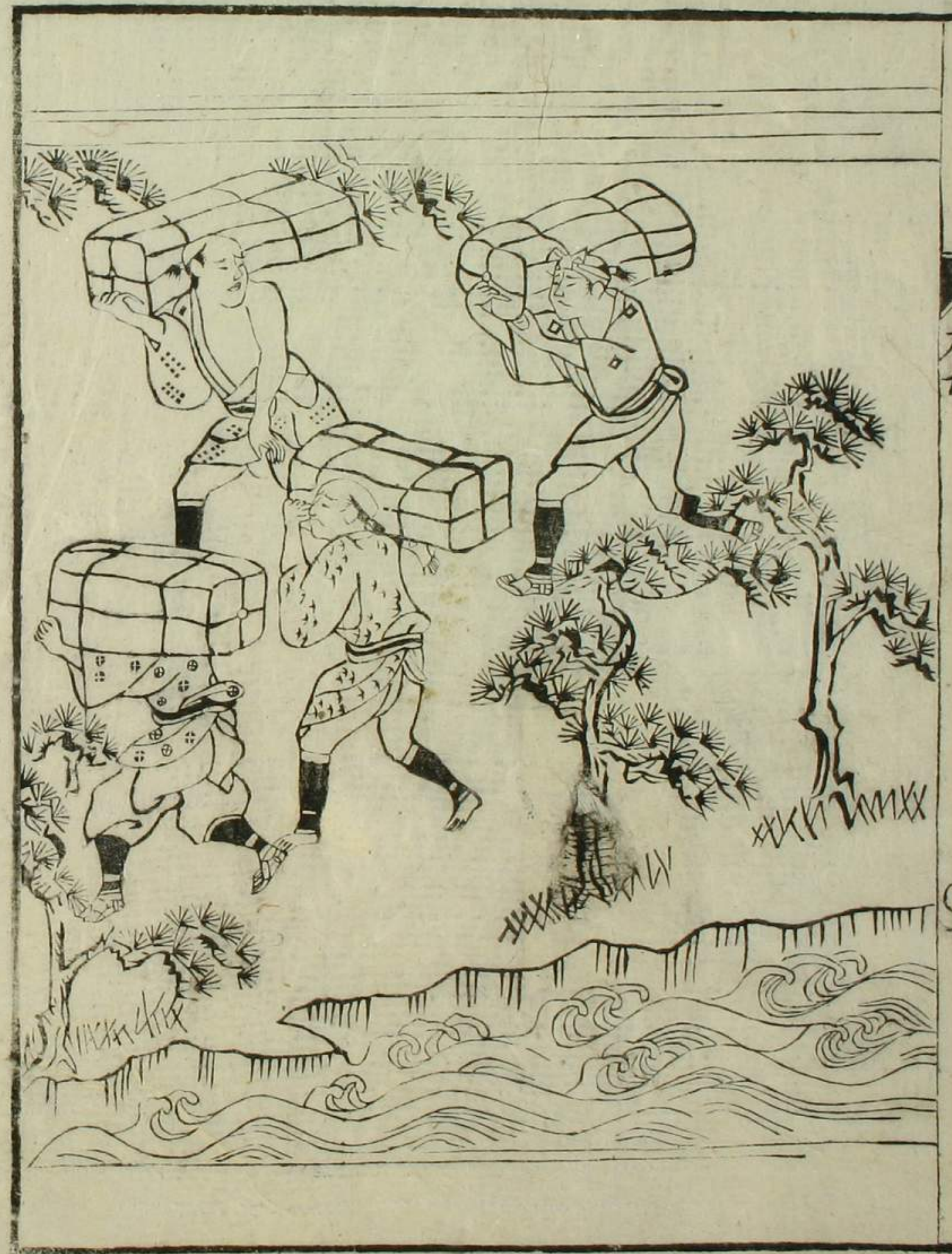
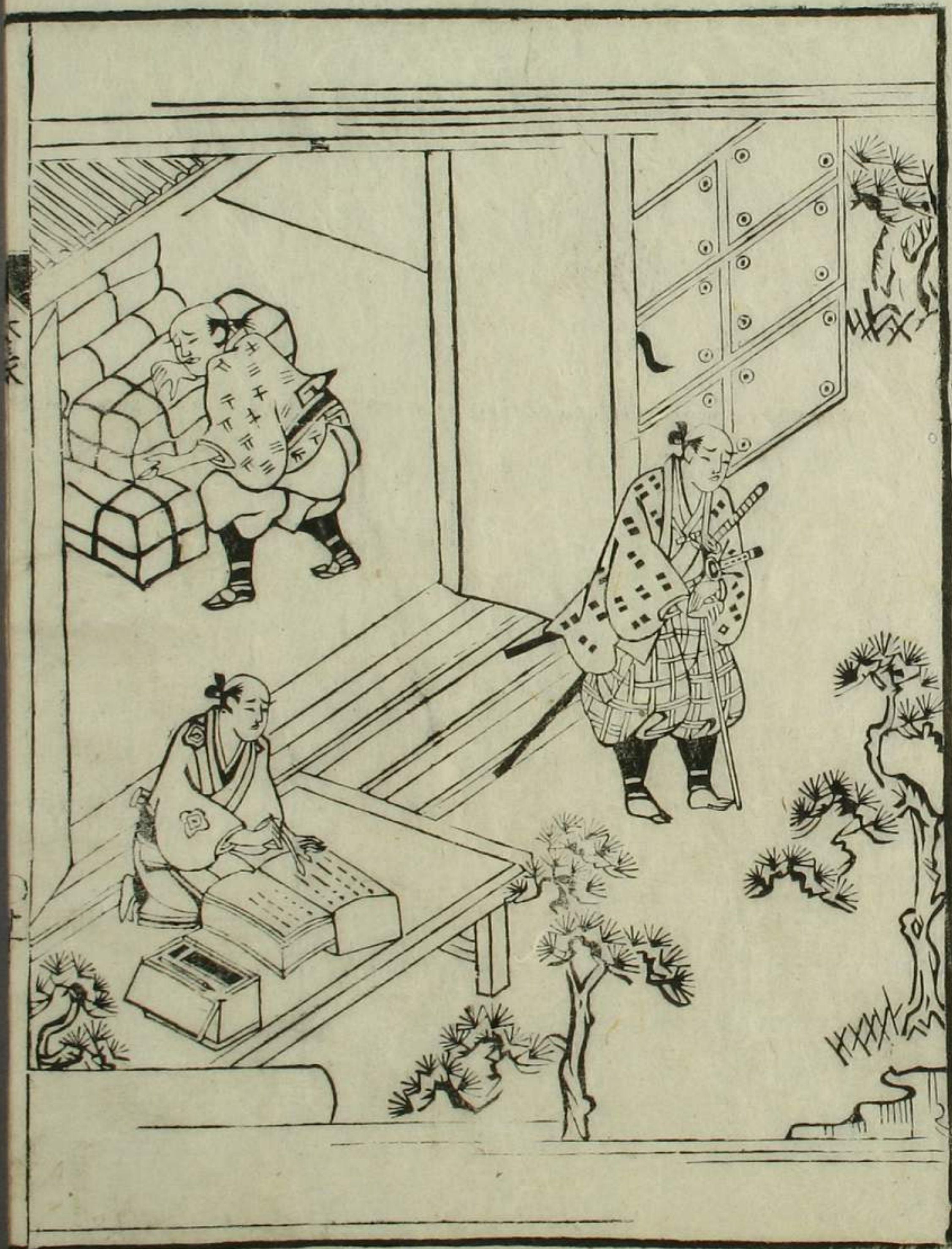














Handwritten text in Arabic script, likely a manuscript page. The text is written in a cursive style and occupies most of the page. There are some faint markings at the top of the page, possibly a signature or date.

Handwritten text in Arabic script, likely a manuscript page. The text is written in a cursive style and occupies most of the page. There are some faint markings at the top of the page, possibly a signature or date.







Handwritten text in a cursive script, likely a historical document or manuscript. The text is written in a dense, flowing style across approximately 20 lines. The ink is dark, and the paper shows signs of age and wear.

Handwritten text in a cursive script, likely a historical document or manuscript. The text is written in a dense, flowing style across approximately 20 lines. The ink is dark, and the paper shows signs of age and wear.







