



柳亭應需
雪景寫
前北齋爲一



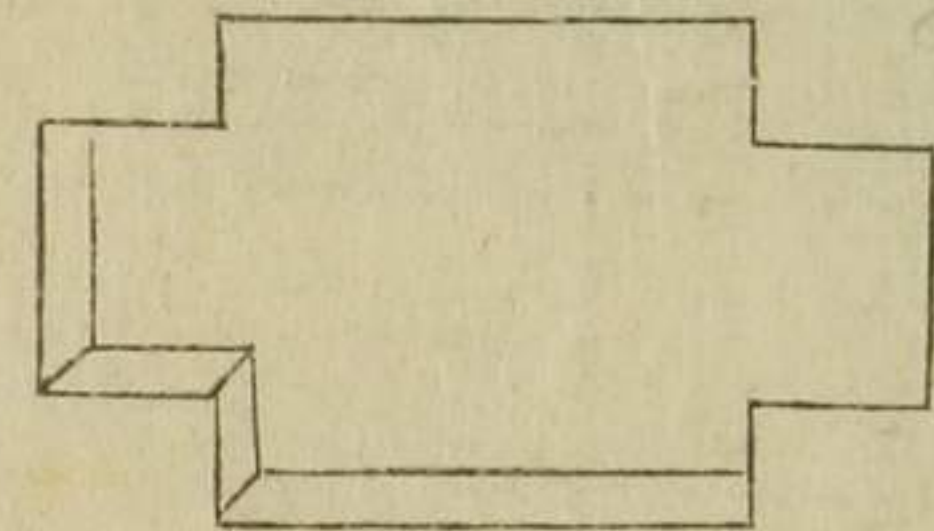
へ13
3062



鏡鑠瓢箪
檨峯梧桐

へ13
3062
お

新彫
癸巳

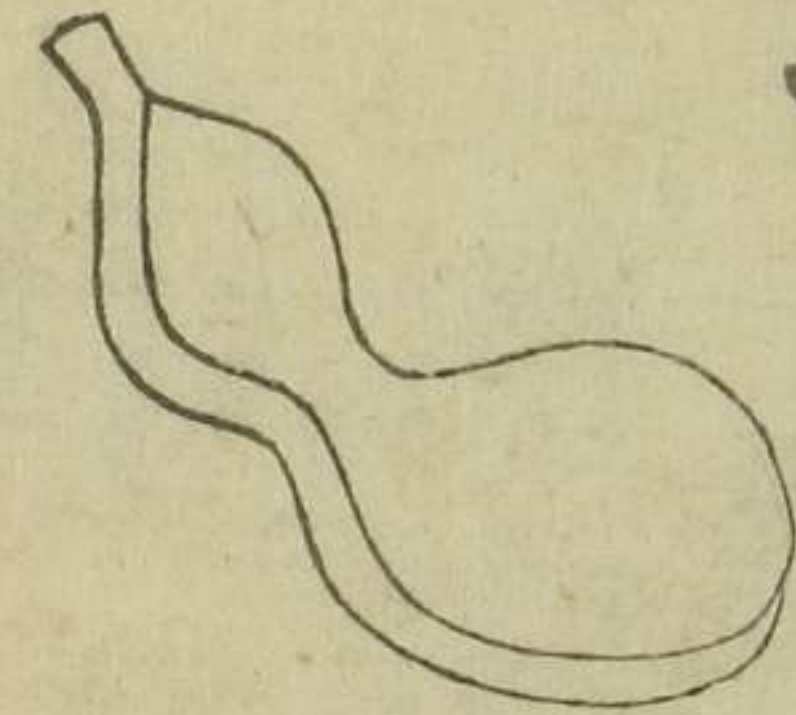


仙鶴堂

壽梓

出世奴小万傳

柳亭種彦作
歌川國直画



全四冊
上の巻

松葉川岸より横をて何が院の向側格子なる物たてて其彼負の
宿るを思ひかほる杜若の心かたし障りあり裡のこまきひのふ
ま近頃の新世界帯白の扇泥黄土腰と出入の淺深五郎多遊初
小万の心の字と万幸の因の亀の紋切形ある極門昌兵衛の錢持金もち
大金車由七里の瀧のそとより白齒されも打こんで流し舟の内お妻
殺と叫ぶゆえ一言さあどぬり替へる指の瀧川の雲鳥の色白路あるえの
飛中よりさうりやえと水烟記念の帯さるく歸るさる夫婦かみ川へ
流れ渡り小世流ちる及古團扇の骨さるく敵のふかり居るさる討て
かろて身の富貴白龍の忠右衛門へむえよ金の花を咲せ小万乃万の
万歳かきさる栄金龜山の利益を綴るの丁度巳の年龜さる
とるれぬ鶴屋の新材巳ゆるる金の藏入を預つて

天保四年

柳亭種彦記

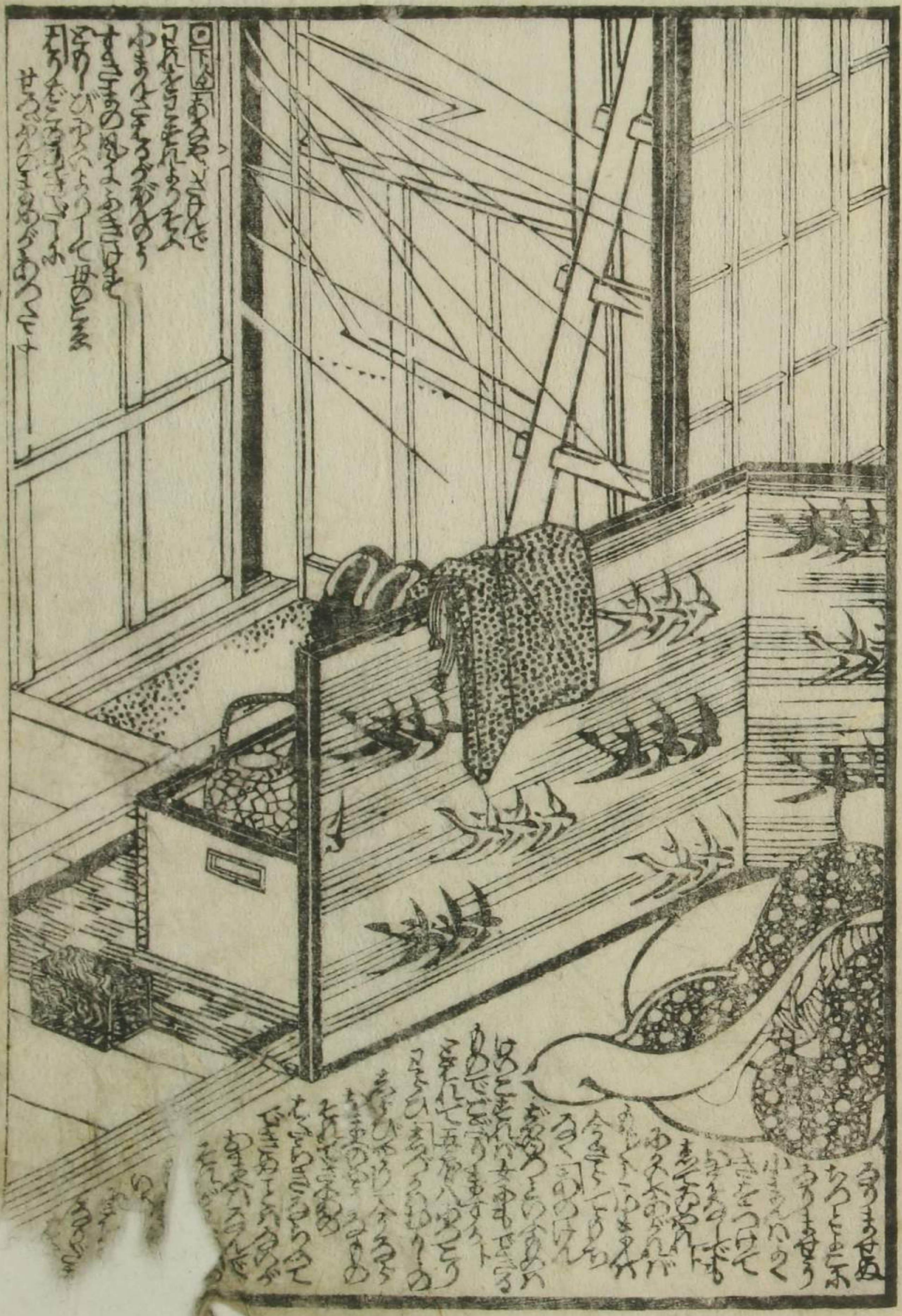
小



Handwritten text in a cursive script, likely a play script, located above the illustration. The text is arranged in vertical columns, reading from right to left.

Handwritten text in a cursive script, likely a play script, located to the right of the illustration. The text is arranged in vertical columns, reading from top to bottom.

Handwritten text in a cursive script, likely a play script, located below the illustration. The text is arranged in vertical columns, reading from right to left.



Handwritten text in a cursive script, likely a play script, located above the illustration. The text is arranged in vertical columns, reading from right to left.

Handwritten text in a cursive script, likely a play script, located below the illustration. The text is arranged in vertical columns, reading from right to left.



運入帳

Vertical columns of handwritten Japanese text, likely a ledger or account book, located below the illustration.



Vertical columns of handwritten Japanese text, likely a ledger or account book, located below the illustration.

Vertical text on the right edge of the page, possibly a page number or title.

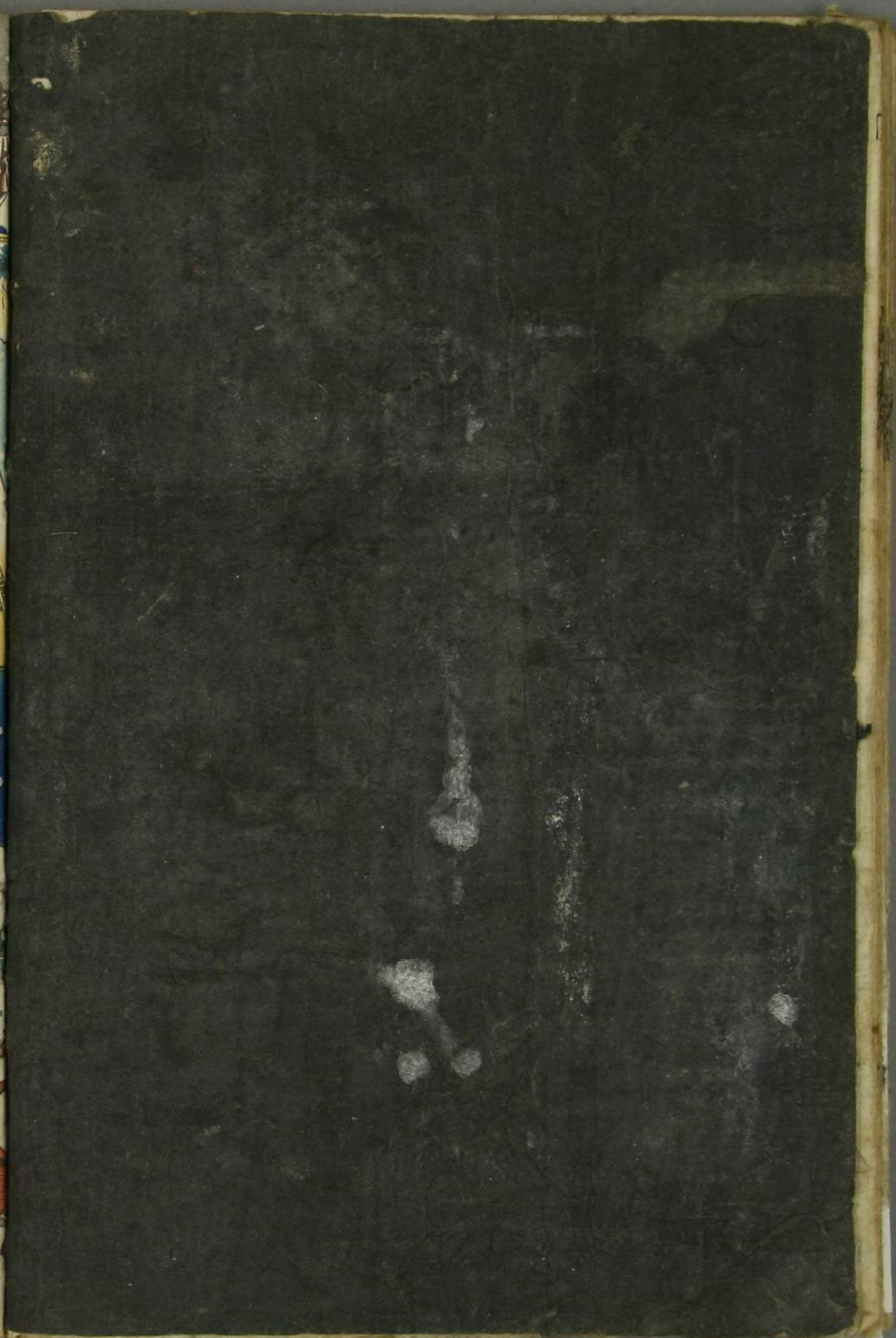


出世奴小方之儒

國直画

種彦作

下





奴舟小海人

下の巻

種彦作

國直画

通油町

鶴屋開板



此の世に... 此の世に... 此の世に...
 此の世に... 此の世に... 此の世に...
 此の世に... 此の世に... 此の世に...



此の世に... 此の世に... 此の世に...
 此の世に... 此の世に... 此の世に...
 此の世に... 此の世に... 此の世に...

此の世に... 此の世に... 此の世に...
 此の世に... 此の世に... 此の世に...
 此の世に... 此の世に... 此の世に...



此の世に... 此の世に... 此の世に...
 此の世に... 此の世に... 此の世に...
 此の世に... 此の世に... 此の世に...

