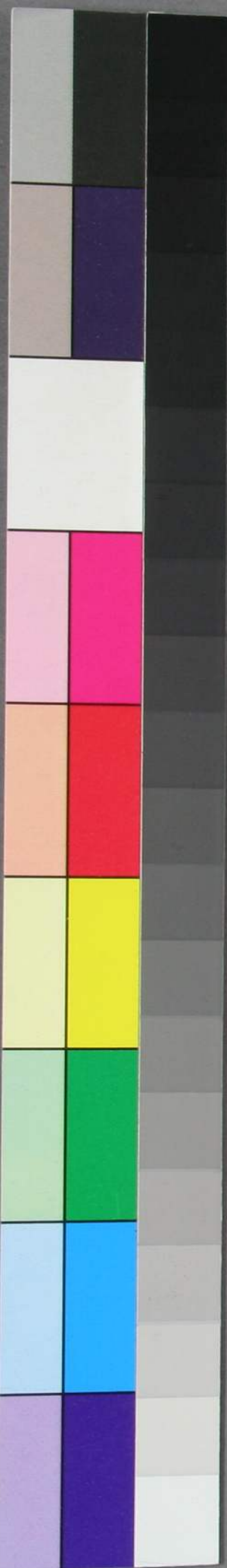


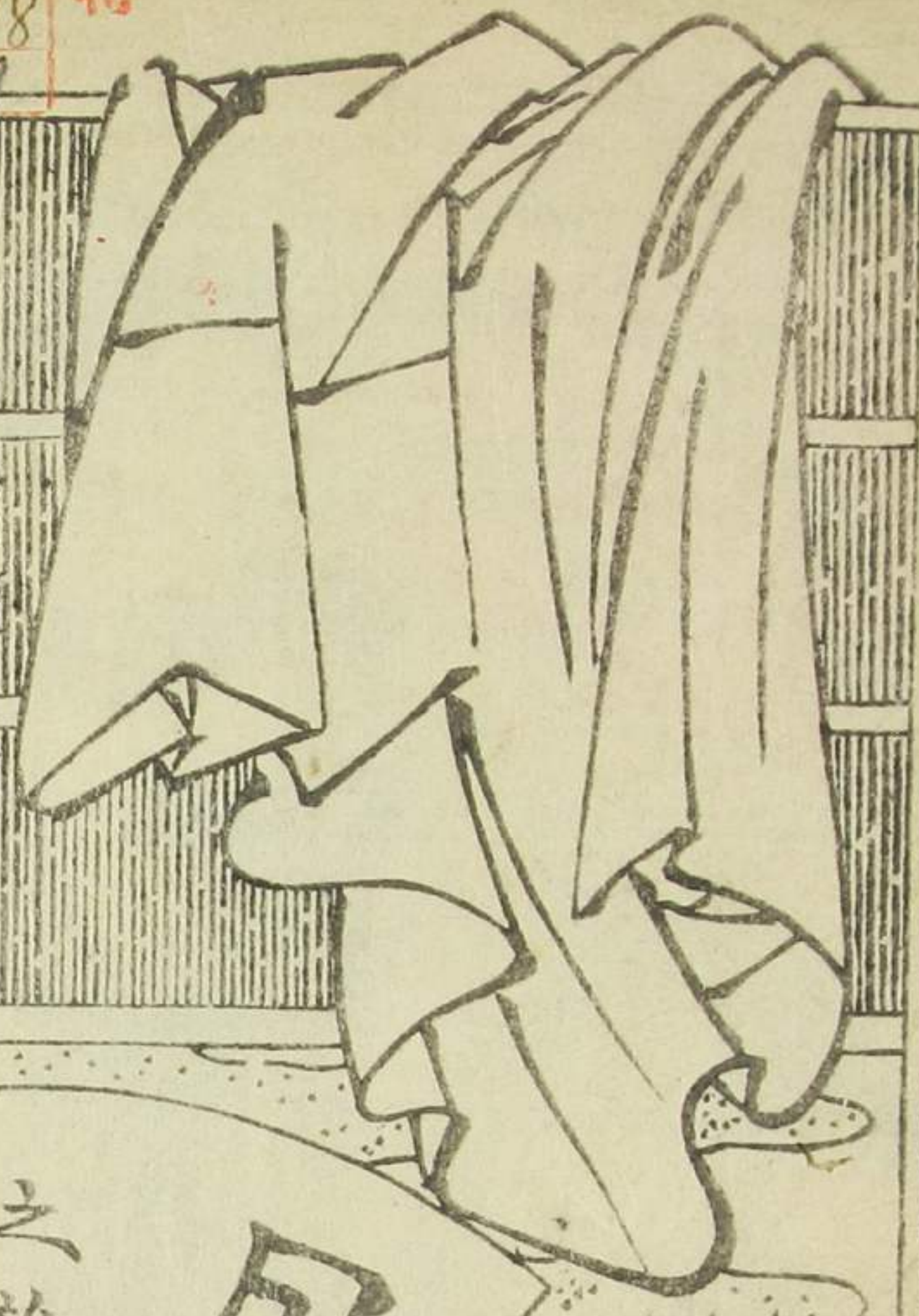


小い香  
かほの  
のこ  
月乃  
難波  
江  
三  
面  
遺稿

~13  
2378  
309

版元





之難 月 所川無

文政

四年の料撰  
喜望山家作  
お月守道

文政  
孝悌  
少長  
松林了



雅波江のそあわの情思をこれ自備の五郎  
縁に綱より半歩尉が深のあひの金其はほ長吉  
こゝに傍に備そひの好百両はさみ子ト流りの  
給草紙おおくれをさる流乃更舟客はきざんと  
取からぬ主へ忠義の押らうらひあられあふと夕涼  
雅俗とまへへ乗合の餅くらんお酒くらん  
軟とまへのゆふ

于後文政四年己陽春  
發兌せんと三層雪中  
筆一紙挿けり

式亭三馬門人  
春亭三曉



綱打半兵衛

奈伊小 城 傾



相撲取也  
秋乃  
中華  
丹溪費

岡取  
白虎  
鳴五郎

景光夜の川渡







Handwritten text in the top left corner of the left page, likely a preface or commentary.



Vertical handwritten text on the left side of the illustration.

Handwritten text in the bottom right corner of the left page, possibly a signature or date.

鳴り 笑ひ 夢の想

三曉作 国直画 雨衣里卯之花 全部 六巻

Handwritten text in the bottom left corner of the right page, likely a preface or commentary.

Handwritten text in the top right corner of the right page, likely a preface or commentary.

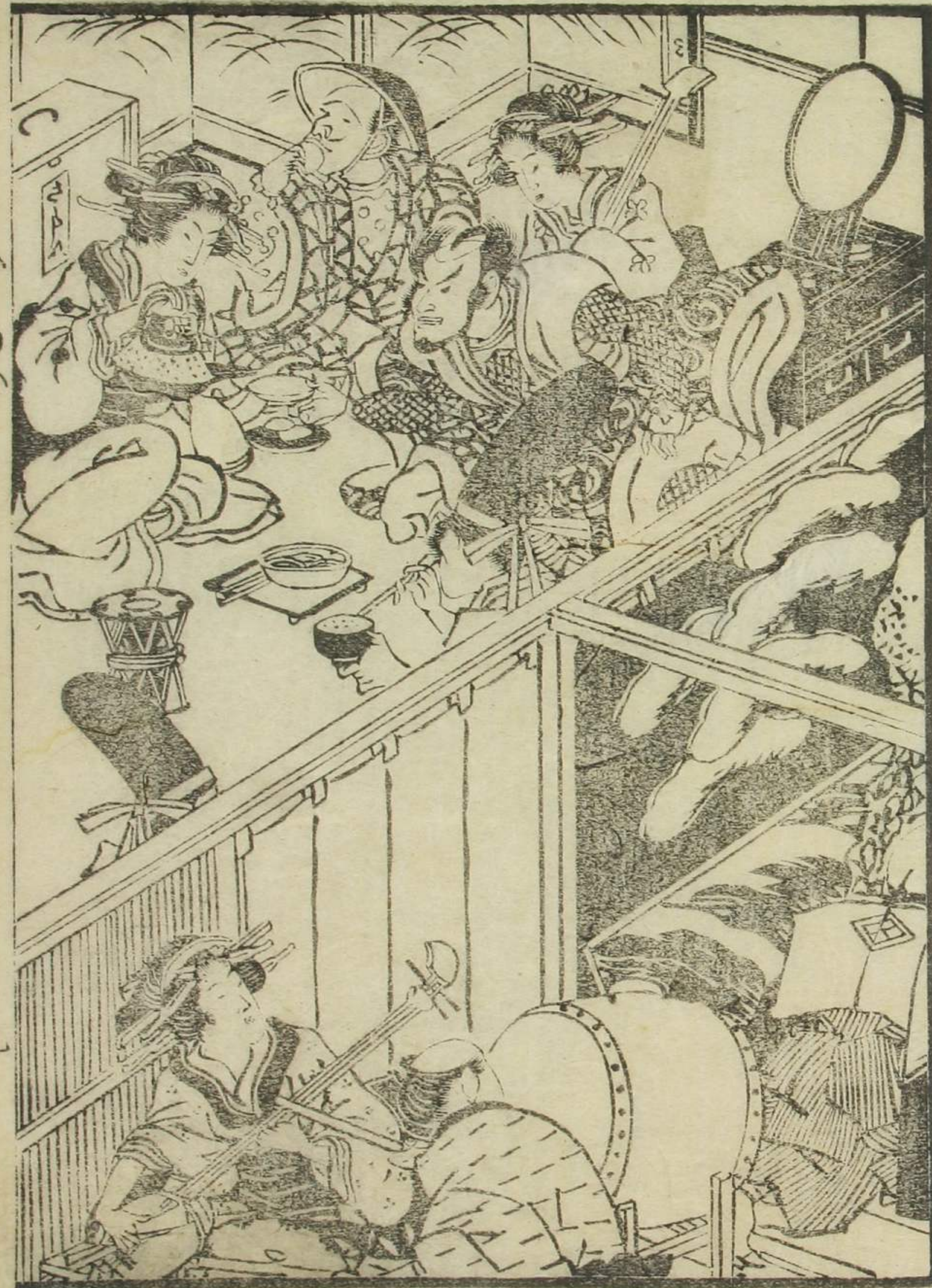


Handwritten text on the right side of the illustration, possibly a signature or date.



















Handwritten Japanese text in vertical columns, located above the illustration of the woman. The text appears to be a commentary or a short story related to the scene.

Handwritten Japanese text in vertical columns, located to the right of the illustration of the woman. This text likely continues the commentary or story.



Handwritten Japanese text in vertical columns, located above the illustration of the man. The text is written in a cursive style.

Handwritten Japanese text in vertical columns, located to the left of the illustration of the man. This text likely provides context or commentary for the character.

Handwritten Japanese text in vertical columns, located below the illustration of the man. This text may be a signature or a concluding note.





筆福 大幸 利市  
硯福 吉市

赤筆はとらりとほる乃らとらとら  
みほもこのくぬめ侍を

式亭三馬

歌川國直繪



春亭三曉作

