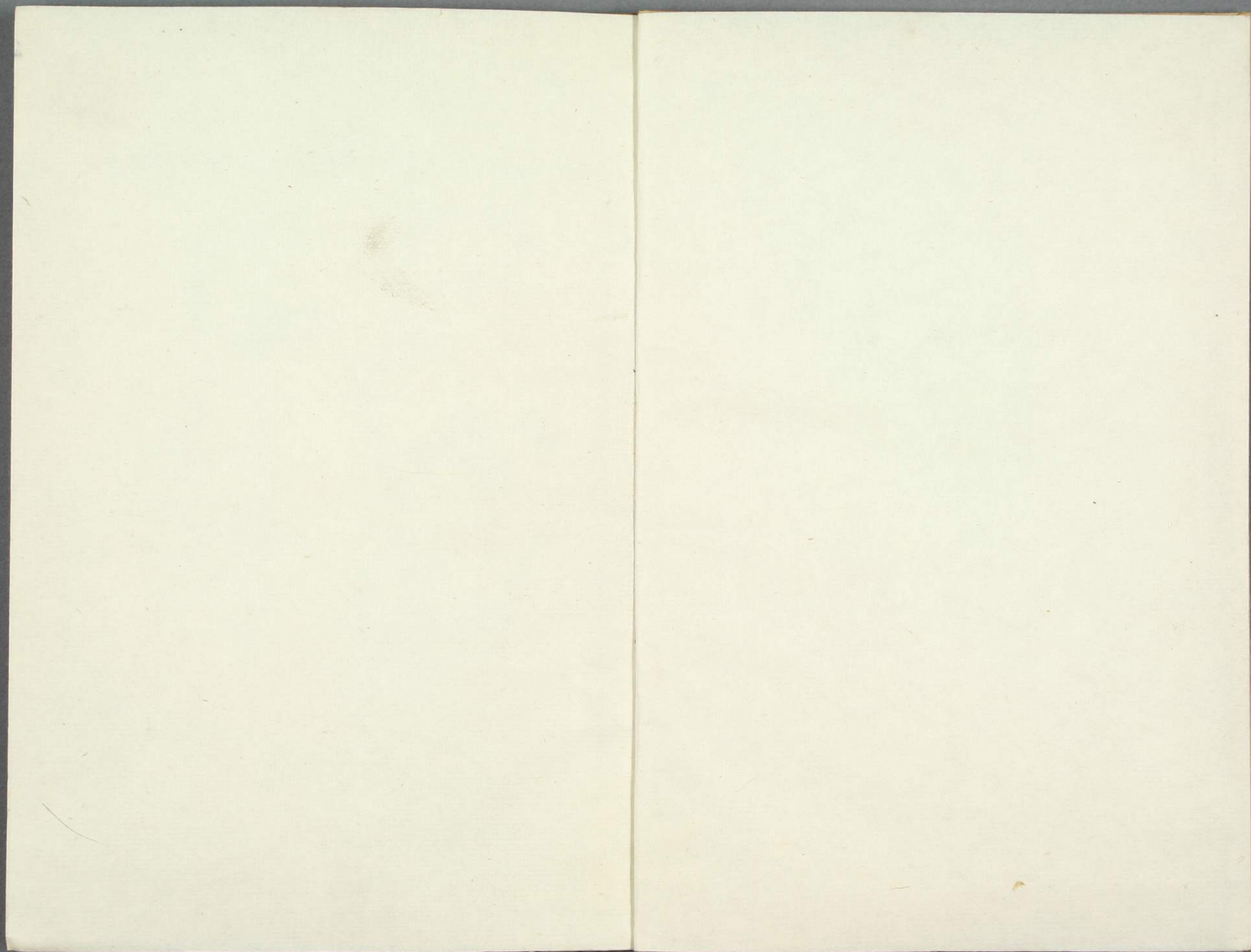


57

13  
1961  
51





へ13  
1961  
51



心こころ如ごと  
巧たくま画が師し

心こころのの墨すみをを濃こくくも

かまひつゝ

寛政五癸丑春

山東京傳賛



19  
13

へ3  
1961  
51

# 菊軒

五典

三墳

八策



菊軒の書は... (Vertical text describing the study scene and the man's activities)

は... (Additional vertical text at the bottom of the left page)

# 風日開蒼花渺 渚晚

吳趨程赤城



山東... (Vertical text describing the scene and the woman's actions)

... (Additional vertical text at the bottom of the right page)













千両の箱をひくと  
さうの箱をひくと  
さうの箱をひくと  
さうの箱をひくと  
さうの箱をひくと  
さうの箱をひくと  
さうの箱をひくと  
さうの箱をひくと  
さうの箱をひくと  
さうの箱をひくと

けいせいの  
きんぎょ  
けいせいの  
きんぎょ  
けいせいの  
きんぎょ  
けいせいの  
きんぎょ  
けいせいの  
きんぎょ



あつちの  
あつちの  
あつちの  
あつちの  
あつちの  
あつちの  
あつちの  
あつちの  
あつちの  
あつちの

あつちの  
あつちの  
あつちの  
あつちの  
あつちの  
あつちの  
あつちの  
あつちの  
あつちの  
あつちの



















堪忍袋緒ノ善玉



右の... 堪忍... 無盡藏... 京傳作...  
 (The illustration depicts a scene with several figures. At the top, a figure is seated behind a desk, holding a large bag labeled '堪忍' (Kanshin). Below, a woman and a child are seated at a table, and another figure is seated to the right. The scene is surrounded by dense handwritten text in Japanese, including the characters '無盡藏' (Mujinzo) and '京傳作' (Keicho Saku).)

Blank paper strip at the top left of the left page.



Vertical columns of handwritten Japanese text located at the top of the right page, above the main illustration.



無盡藏 (Mujinso) written vertically on the left side of the illustration's frame.

京傳作 (Kyōden Saku) written vertically on the right side of the illustration's frame.

Additional handwritten Japanese text located at the bottom of the right page, below the main illustration.



