

寶通長老卷七色圓珠

大蓮寺藏

戊午心月

遠
1176



寶滿長者卷之目錄



かうまんとちりりなる事

田舎もれたるの事

河原のたうなむいんさる事

ちりりもさる事

ちりりもさる事

河原もれたる事

ちりりもさる事

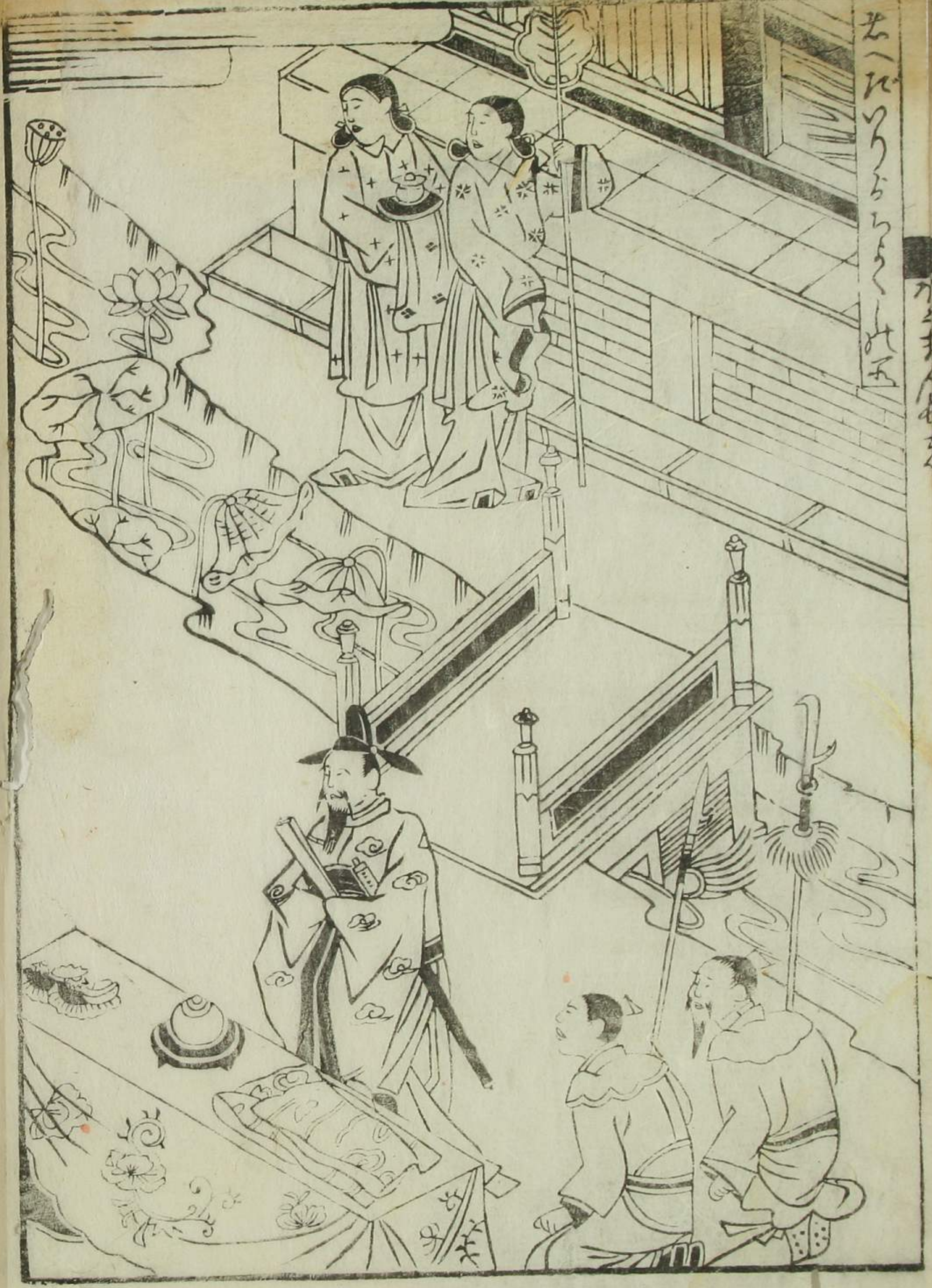
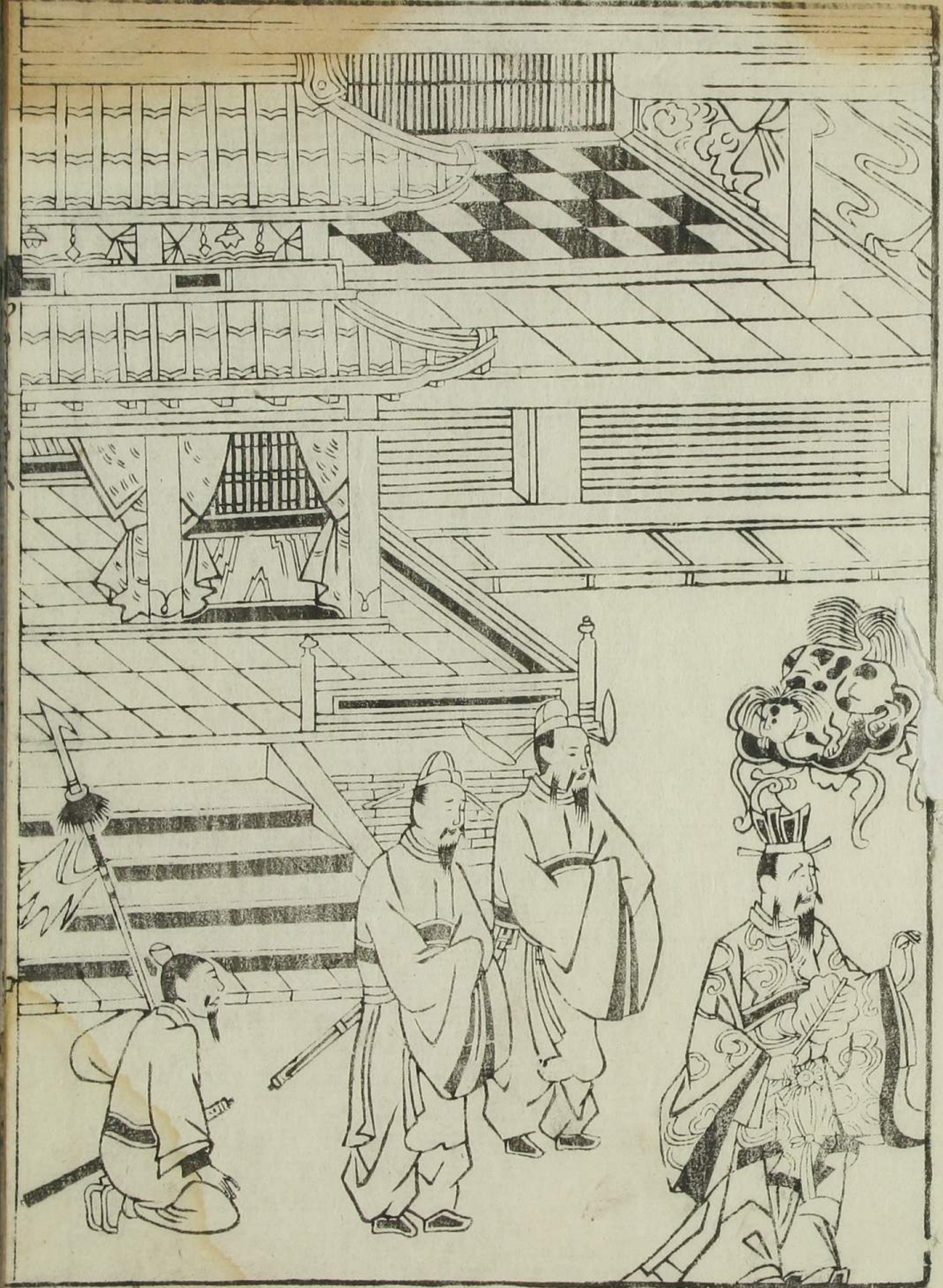
ちりりもさる事

Handwritten text in a cursive script, likely a historical document or manuscript. The text is written in a dark ink on aged paper and is organized into several lines. Red ink is used for decorative purposes, including underlining certain words and marking specific characters. The script is dense and characteristic of early modern European handwriting.

Handwritten text in a cursive script, continuing from the previous page. The text is written in a dark ink on aged paper and is organized into several lines. Red ink is used for decorative purposes, including underlining certain words and marking specific characters. The script is dense and characteristic of early modern European handwriting.

Handwritten text in a cursive script, likely a historical document or manuscript. The text is written in black ink on aged paper and is organized into several lines. Red ink is used for decorative purposes, including underlining and highlighting certain words or initials. The script is dense and characteristic of early modern handwriting.

Handwritten text in a cursive script, continuing from the previous page. The text is written in black ink on aged paper and is organized into several lines. Red ink is used for decorative purposes, including underlining and highlighting certain words or initials. The script is dense and characteristic of early modern handwriting.



七(五)りらららららら

七(五)りらららららら

Main body of handwritten text on the right page, written in a cursive script with red ink used for initials and accents.

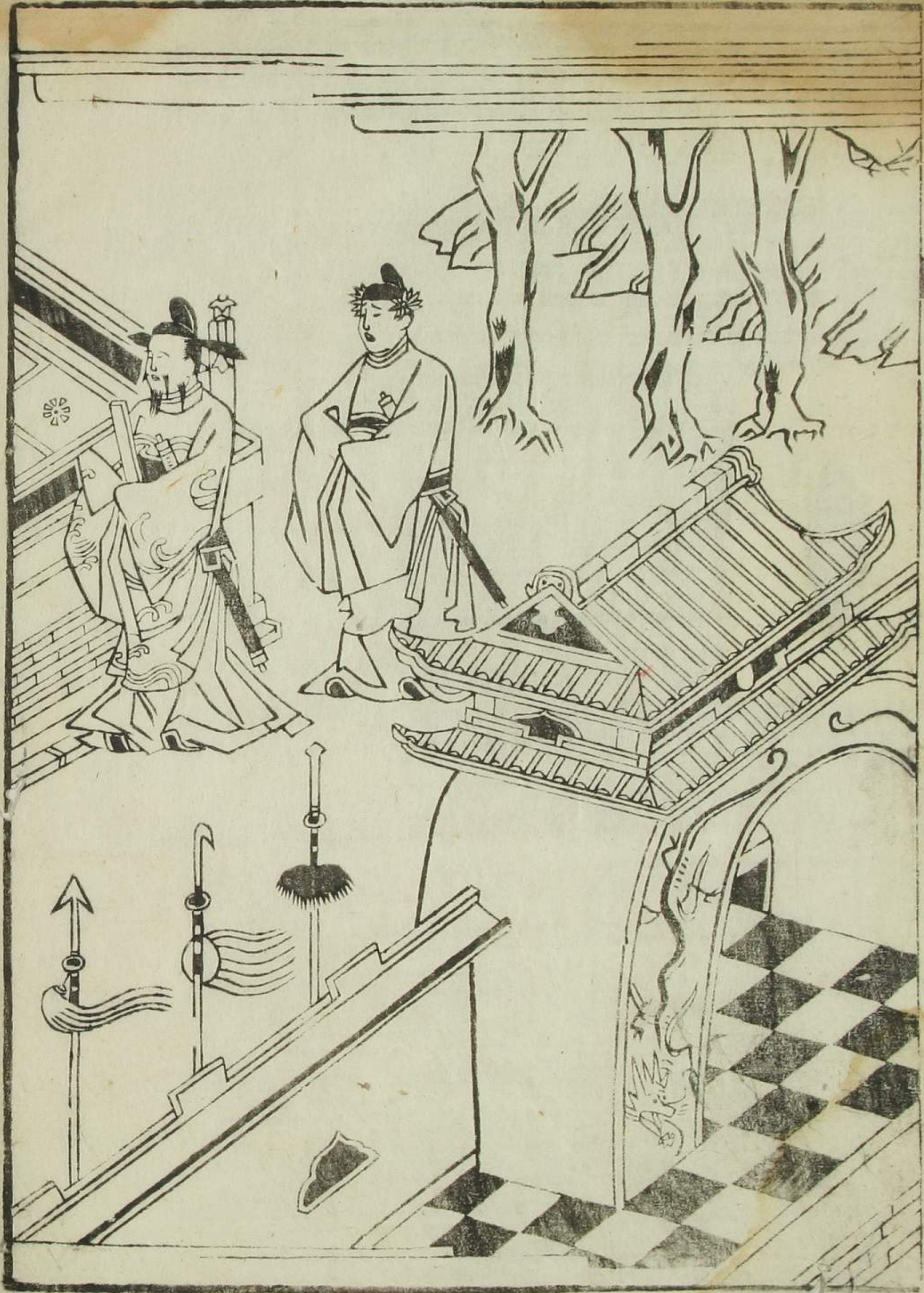
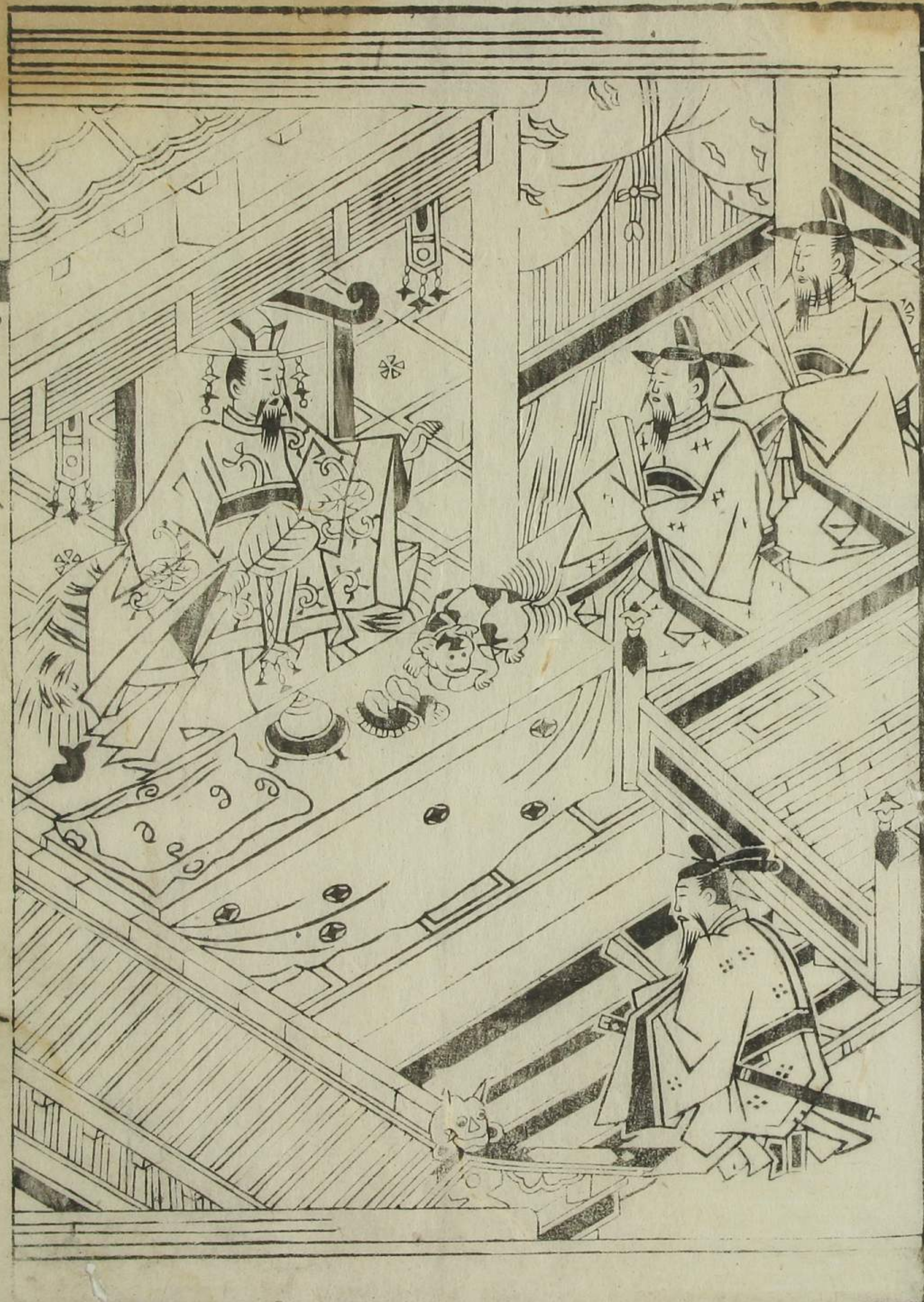
Main body of handwritten text on the left page, written in a cursive script with red ink used for initials and accents.

Handwritten text in a cursive script, likely a historical record or account. The text is written in black ink on aged paper and includes several red ink markings, possibly initials or corrections. The script is dense and fills most of the page.

Handwritten text in a cursive script, continuing from the previous page. The text is written in black ink on aged paper and includes several red ink markings, possibly initials or corrections. The script is dense and fills most of the page.

Handwritten text in a cursive script, likely a medieval manuscript. The text is written in black ink on aged parchment. Red ink is used for decorative initials and some accents. The script is dense and fills most of the page.

Handwritten text in a cursive script, likely a medieval manuscript. The text is written in black ink on aged parchment. Red ink is used for decorative initials and some accents. The script is dense and fills most of the page.



Handwritten text in a cursive script, likely a historical document or manuscript. The text is written in black ink on aged paper and features several red ink markings, possibly initials or corrections. The script is dense and fills most of the page.

Handwritten text in a cursive script, likely a historical document or manuscript. The text is written in black ink on aged paper and features several red ink markings, possibly initials or corrections. The script is dense and fills most of the page.

Handwritten text in a cursive script, likely a medieval manuscript. The text is written in black ink on aged parchment. It consists of approximately 15 lines of text, with several lines beginning with a red initial letter. The script is dense and characteristic of the Gothic or similar medieval hands. The text is enclosed within a simple rectangular border.

Handwritten text in a cursive script, likely a medieval manuscript. The text is written in black ink on aged parchment. It consists of approximately 15 lines of text, with several lines beginning with a red initial letter. The script is dense and characteristic of the Gothic or similar medieval hands. The text is enclosed within a simple rectangular border.



Handwritten text in a cursive script, likely a transcription of a story or a letter. The text is written in black ink on aged paper and includes several red ink markings, possibly indicating specific characters or words. The script is dense and fills most of the page.

Handwritten text in a cursive script, likely a medieval manuscript. The text is written in black ink on aged parchment. It consists of approximately 25 lines of text, with some words or initials highlighted in red ink. The script is dense and characteristic of the late Gothic or early modern period.

Handwritten text in a cursive script, likely a medieval manuscript. The text is written in black ink on aged parchment. It consists of approximately 25 lines of text, with some words or initials highlighted in red ink. The script is dense and characteristic of the late Gothic or early modern period.

江戸日本橋通壹丁目 須原屋茂兵衛
 同日本橋通貳丁目 山城屋佐兵衛
 同日本橋通参丁目 小林新兵衛
 同日本橋通肆丁目 金花堂佐助
 同浅草第町二丁目 須原屋伊八
 同芝神明前三嶋町 和泉屋吉兵衛
 同芝神明前 岡田屋嘉七
 大阪心齋橋安堂寺町 秋田屋太右衛門
 京寺町通松原下 梅村二郎兵衛
 同町 勝村治右衛門板
 同寺町通高辻上 同 伊兵衛

三都

發兌

書肆

江戸日本橋通壹丁目 須原屋茂兵衛
 同日本橋通貳丁目 山城屋佐兵衛
 同日本橋通参丁目 小林新兵衛
 同日本橋通肆丁目 金花堂佐助
 同浅草第町二丁目 須原屋伊八
 同芝神明前三嶋町 和泉屋吉兵衛
 同芝神明前 岡田屋嘉七
 大阪心齋橋安堂寺町 秋田屋太右衛門
 京寺町通松原下 梅村二郎兵衛
 同町 勝村治右衛門板
 同寺町通高辻上 同 伊兵衛

安政五年
戊午正月
新刊

五冊
同